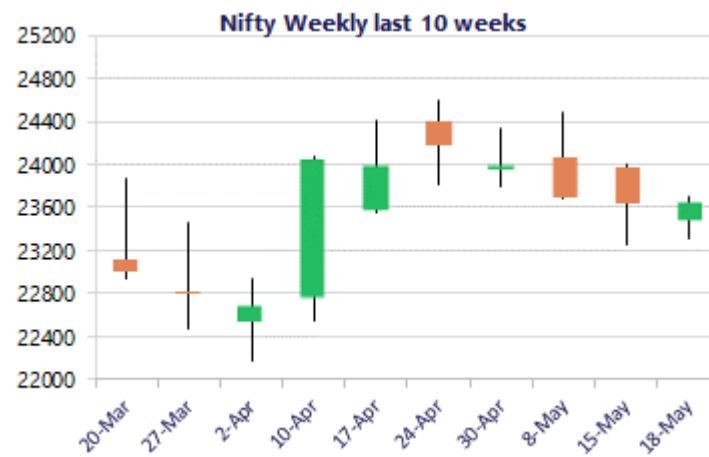
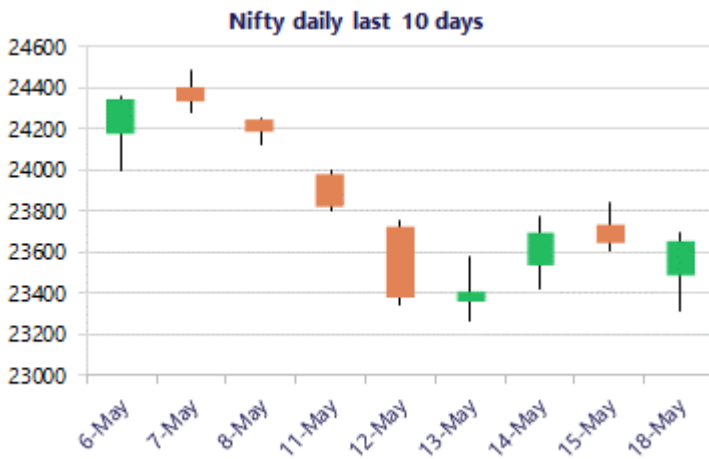


* Sensex 75315.04 +77.05

* Nifty 23649.95 + 6.45

* Bank Nifty 53537.00 -173.35



*Blue candle → Close rate > Open rate * Red candle → Close rate < Open rate

Market Preview

Nifty ends flat amid volatility

Nifty witnessed a huge gap down opening to touch 23300 zone but a strong bounce back witnessed as the day progressed helped the index to close on a flat note with bias still maintained with a cautious approach. BankNifty opened weak near the 53300 zone and with some fluctuations during the intraday session managed to close above the important 53500 level to minimise the losses. The market breadth was weak with the advance decline ratio indicating 2:5 at close.

Market Forecast

Nifty daily range 23400 - 23800

Nifty after a weak start making a low near 23300 zone, has indicated a strong recovery and as the day progressed gained significantly to close in the green though marginally but has managed to move past the 23600 zone. As mentioned earlier, the index has sustained above the near-term support at 23200 zone to maintain the overall bias intact whereas on the upside, the 24300 band shall be the tough resistance hurdle which needs to be breached decisively to establish conviction and clarity.

BankNifty witnessed a huge gap down opening below the important zone of 53500 level and thereafter, amid some volatility recovered to some extent to close just above the 53500 zone and is currently precariously placed. A decisive move below the 53500 zone shall open the gates for downward movement triggering for fresh targets of 51800 and the 50000 levels expected in the coming days. On the upside, a decisive move past the 54500 level is necessary to establish conviction and improve the bias to some extent.

The support for the day is seen at 23400 levels, while the resistance is seen at 23800 levels. BankNifty would have the daily range of 52800-54400 levels.

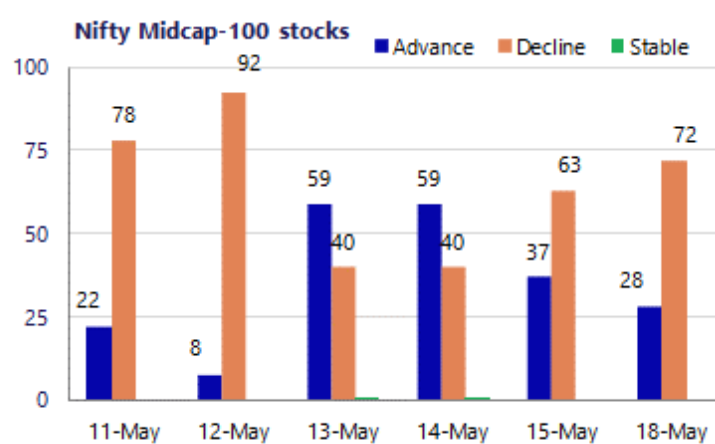
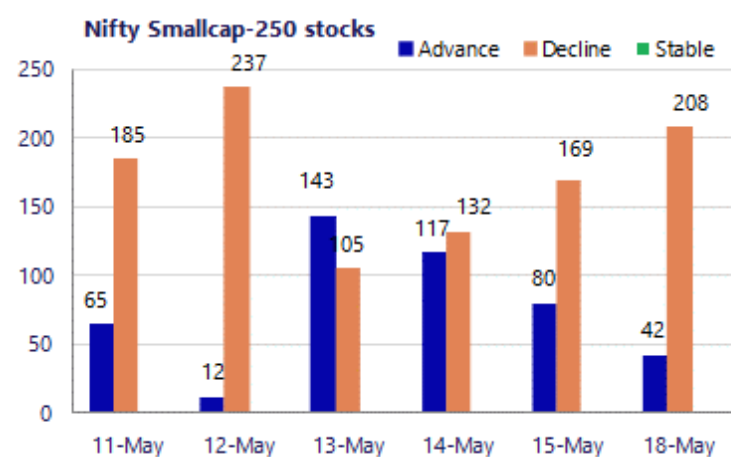
Sensex	Period	Closing	% Chng	Trend	Reversal	2 Sup	1 Sup	Pivot	1 Res	2 Res
Nifty	Daily	23649.95	0.03%	-7	23638.65	23176	23413	23554	23791	23933
	Weekly	23643.50	-2.20%	6	23661.60	22900	23272	23635	24006	24369
	Monthly	23997.55	7.46%	-4	26009.10	21175	22586	23594	25005	26013
Bank Nifty	Daily	53537.00	-0.32%	-6	53761.60	52445	52991	53329	53875	54213
	Weekly	53710.35	-2.89%	-1	54330.15	52157	52934	53968	54745	55779
	Monthly	54863.35	9.13%	-2	62653.00	46590	50727	54092	58228	61593
Sensex	Daily	75315.04	0.10%	-7	75290.10	73701	74508	74987	75794	76274
	Weekly	75237.99	-2.70%	6	75620.00	72806	74022	75350	76566	77894
	Monthly	76913.50	6.90%	-4	83783.80	68121	72517	75942	80338	83763

Gainers - Losers (Nifty 500 Stocks)
Gainers

Company Name	Last Price	% Gain	Volume
Persistent	4944.1	5.15%	4678.6
Tech Mahindra	1,430.00	4.34%	1363.7
Solar Ind	18019	4.07%	17509
Shipping Corp	344.70	4.01%	329.9
Torrent Power	1,523.50	3.92%	1454
PB Fintech	1,748.30	3.55%	1694.6
Syngene Intl	466.30	2.70%	454.8

Losers

Company Name	Last Price	% Loss	Volume
PG Electroplast	458.60	-5.85%	482.25
Saregama India	392.35	-5.63%	405.15
SJVN	73.13	-5.54%	75.98
TVS Motor	3,291.00	-5.07%	3430
Schneider Infra	1,201.10	-5.00%	1255
UNO Minda	1067.8	-4.81%	1122.6
Zee Entertain	84.57	-4.27%	87.68



Nifty Daily chart with RSI indicator



BankNifty Daily chart with RSI indicator

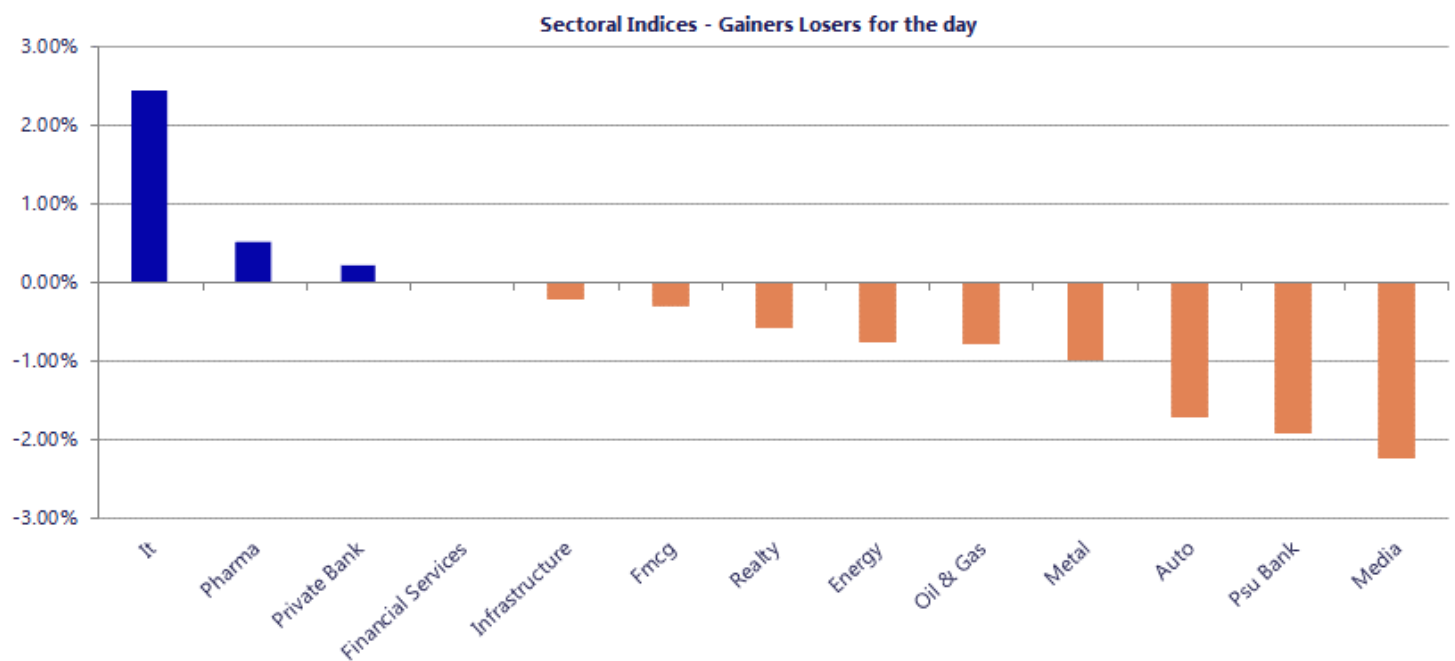


Breakouts - Cross above 200 DMA			
Company Name	LCP	Change %	200 DMA
Astec Life	754.75	5.55	715.07
ABM Inter	48.11	4.16	46.19
Monarch Net	315.15	3.22	305.33
PB Fintech	1748.3	2.92	1698.69
Raymond	502.55	2.00	492.7
Rubfila Intl	75.64	1.52	74.51
DCG Cables & Wi	66.8	1.46	65.84
Ind Motor Parts	1051.9	1.36	1037.76
GeeCee Ventures	331.6	1.18	327.74
Nitco	98.72	1.13	97.62
Reliable Data S	132.5	0.65	131.65
India Cements	403.9	0.29	402.74

Breakdown - Cross below 200 DMA			
Company Name	LCP	Change %	200 DMA
Vaidya Sane	201.05	-17.53	243.8
Marco Cables &	35.1	-7.92	38.12
Cubex Tubings	88.44	-7.76	95.88
Arisinfra Solut	126.37	-5.67	133.96
Sharda Crop	901.2	-5.63	954.93
Suryalakshmi Co	57.05	-5.00	60.05
Baid Finserv	10.49	-4.98	11.04
Jamna Auto	110.42	-3.84	114.83
Salzer Electro	683.95	-3.79	710.87
PSP Projects	756.6	-3.35	782.84
Uttam Sugar	233.25	-3.33	241.28
Prozone Intu	50.41	-3.23	52.09
Soma Textile	101.34	-3.20	104.69
BALMLAWRIE	184.74	-3.19	190.82
Chaman Lal Seti	260.5	-3.12	268.89
Container Corp	501.95	-2.98	517.36
United Polyfab	32.06	-2.88	33.01
Amber Enterpris	7153.5	-2.72	7353.28

* Stocks crossing above its Simple Moving Average (200DMA)

* Stocks crossing below its Simple Moving Average (200DMA)



Nifty 50 Stocks - Summary Details											
Symbol	LTP	Chng	% Chng	Volume (lacs)	Turnover (crs.)	52w High	Diff with 52w H	52w Low	Diff with 52w L	365 days % chng	30 days % chng
NIFTY 50	23649.95	6.45	0.03%	3919.59	30028	26373	10.33%	22183	6.62%	-2.89%	-5.48%
ADANIENT	2686.70	-29.30	-1.08%	20.34	545	2803	4.15%	1753	53.26%	21.12%	8.31%
ADANIPTS	1784.00	-11.10	-0.62%	25.63	455	1824	2.19%	1291	38.24%	13.39%	26.76%
APOLLOHOSP	8030.00	-52.50	-0.65%	3.23	260	8180	1.83%	6697	19.91%	4.30%	14.47%
ASIANPAINT	2605.60	-	#VALUE!	8.98	234	2986	12.73%	2115	23.20%	5.75%	10.71%
AXISBANK	1234.90	-9.90	-0.80%	60.52	747	1418	12.93%	1043	18.46%	-9.14%	2.16%
BAJAJ-AUTO	10188.00	-189.50	-1.83%	2.96	302	10785	5.54%	7859	29.64%	4.24%	20.11%
BAJAJFINSV	1750.00	21.90	1.27%	11.99	208	2195	20.27%	1597	9.58%	-4.83%	-13.95%
BAJFINANCE	922.00	11.55	1.27%	63.85	582	1103	16.37%	788	17.02%	1.51%	0.58%
BEL	426.95	3.30	0.78%	104.52	441	473	9.82%	341	25.28%	-7.74%	17.33%
BHARTIARTL	1937.10	31.70	1.66%	138.89	2685	2175	10.92%	1741	11.30%	4.88%	6.79%
CIPLA	1426.00	-6.10	-0.43%	20.14	287	1673	14.76%	1166	22.33%	14.93%	-4.93%
COALINDIA	461.50	-0.70	-0.15%	77.35	359	491	6.06%	369	25.19%	5.19%	14.01%
DRREDDY	1330.50	-6.20	-0.46%	19.27	257	1380	3.57%	1148	15.86%	7.67%	8.11%
EICHERMOT	6894.50	-120.00	-1.71%	3.16	218	8230	16.23%	5220	32.09%	-4.10%	25.14%
ETERNAL	240.81	-0.37	-0.15%	268.27	638	368	34.64%	213	13.27%	-4.67%	-2.01%
GRASIM	2955.00	21.20	0.72%	8.00	235	3007	1.74%	2503	18.08%	8.62%	5.38%
HCLTECH	1146.50	13.90	1.23%	25.89	295	1780	35.59%	1103	3.91%	-20.51%	-30.93%
HDFCBANK	768.80	1.30	0.17%	298.12	2282	1021	24.66%	727	5.80%	-3.89%	-20.53%
HDFCLIFE	605.00	-3.70	-0.61%	39.81	239	821	26.29%	555	8.99%	-1.86%	-19.39%
HINDALCO	1052.00	-15.50	-1.45%	40.24	423	1105	4.80%	618	70.23%	1.25%	59.99%
HINDUNILVR	2262.00	-10.20	-0.45%	11.18	251	2750	17.75%	2023	11.84%	0.95%	-5.01%
ICICIBANK	1251.70	7.20	0.58%	139.19	1731	1500	16.55%	1188	5.40%	-7.06%	-13.91%
INDIGO	4274.00	-40.90	-0.95%	5.25	223	6233	31.42%	3895	9.72%	-7.86%	-23.16%
INFY	1145.60	26.60	2.38%	120.96	1373	1728	33.70%	1089	5.20%	-13.13%	-27.95%
ITC	310.95	1.50	0.48%	144.21	446	444	30.00%	287	8.34%	1.35%	-28.63%
JIOFIN	232.53	-0.53	-0.23%	131.56	303	339	31.33%	223	4.13%	-4.65%	-16.05%
JSWSTEEL	1289.00	10.20	0.80%	29.65	381	1314	1.90%	962	33.97%	3.93%	26.15%
KOTAKBANK	391.45	4.40	1.14%	145.76	566	453	13.63%	346	13.30%	2.05%	-7.16%
LT	3911.00	2.00	0.05%	17.72	690	4440	11.91%	3288	18.94%	-4.52%	8.50%
M&M	3080.90	-42.20	-1.35%	19.62	604	3840	19.77%	2896	6.38%	-3.73%	-1.74%
MARUTI	13015.00	-206.00	-1.56%	3.73	483	17370	25.07%	12016	8.31%	-3.26%	0.15%
MAXHEALTH	1059.20	9.10	0.87%	15.58	163	1314	19.41%	903	17.30%	5.12%	-9.25%
NESTLEIND	1428.00	-2.50	-0.17%	20.31	290	1498	4.68%	1085	31.65%	11.08%	18.57%
NTPC	384.90	-10.35	-2.62%	76.32	297	414	7.12%	316	21.98%	-2.21%	12.18%
ONGC	297.50	-1.85	-0.62%	105.21	313	308	3.25%	229	30.13%	4.74%	20.31%
POWERGRID	296.90	-8.95	-2.93%	160.36	472	325	8.63%	250	18.76%	-6.66%	-1.10%
RELIANCE	1335.00	-1.40	-0.10%	130.22	1736	1612	17.17%	1290	3.49%	-2.20%	-8.34%
SBILIFE	1864.00	-0.50	-0.03%	7.47	138	2132	12.57%	1720	8.37%	-5.42%	5.11%
SBIN	938.80	-24.40	-2.53%	165.54	1556	1235	23.97%	779	20.50%	-13.09%	18.52%
SHRIRAMFIN	933.95	-3.95	-0.42%	52.32	482	1108	15.71%	567	64.86%	-9.93%	40.34%
SUNPHARMA	1904.00	25.80	1.37%	34.56	655	1911	0.37%	1548	23.00%	13.64%	9.75%
TATACONSUM	1228.50	-5.50	-0.45%	14.94	183	1283	4.23%	1007	21.97%	10.36%	5.18%
TATASTEEL	210.01	-6.83	-3.15%	737.95	1542	224	6.41%	150	40.19%	-0.99%	33.30%
TCS	2289.90	25.90	1.14%	37.73	859	3600	36.39%	2206	3.78%	-11.30%	-35.70%
TECHM	1437.00	66.50	4.85%	62.05	867	1854	22.49%	1304	10.19%	-4.92%	-11.13%
TITAN	4169.00	-0.10	#VALUE!	8.52	351	4605	9.47%	3303	26.21%	-7.89%	14.73%
TMPV	352.90	-3.65	-1.02%	104.09	368	744	52.57%	294	19.91%	-2.00%	-51.70%
TRENT	4034.70	-66.60	-1.62%	10.81	434	6261	35.56%	3276	23.18%	-1.78%	-27.73%
ULTRACEMCO	11565.00	78.00	0.68%	2.34	268	13110	11.78%	10325	12.01%	-2.70%	-2.86%
WIPRO	192.49	2.49	1.31%	163.27	312	273	29.52%	187	3.21%	-5.79%	-24.31%

Disclaimer / Disclosures

ANALYST CERTIFICATION

I, Mrs. Vaishali Parekh B.com, Research Analyst, author and the name subscribed to this report, hereby certify that all of the views expressed in this research report accurately reflect our views about the subject issuer(s) or securities. We also certify that no part of our compensation was, is, or will be directly or indirectly related to the specific recommendation(s) or view(s) in this report.

Terms & conditions and other disclosures:

Prabhudas Lilladher Pvt. Ltd, Mumbai, India (hereinafter referred to as "PL") is engaged in the business of Stock Broking, Portfolio Manager, Depository Participant and distribution for third party financial products. PL is a subsidiary of Prabhudas Lilladher Advisory Services Pvt Ltd. which has its various subsidiaries engaged in business of commodity broking, investment banking, financial services (margin funding) and distribution of third party financial/other products, details in respect of which are available at www.plindia.com

This document has been prepared by the Research Division of PL and is meant for use by the recipient only as information and is not for circulation. This document is not to be reported or copied or made available to others without prior permission of PL. It should not be considered or taken as an offer to sell or a solicitation to buy or sell any security.

The information contained in this report has been obtained from sources that are considered to be reliable. However, PL has not independently verified the accuracy or completeness of the same. Neither PL nor any of its affiliates, its directors or its employees accepts any responsibility of whatsoever nature for the information, statements and opinion given, made available or expressed herein or for any omission therein.

Recipients of this report should be aware that past performance is not necessarily a guide to future performance and value of investments can go down as well. The suitability or otherwise of any investments will depend upon the recipient's particular circumstances and, in case of doubt, advice should be sought from an independent expert/advisor.

Either PL or its affiliates or its directors or its employees or its representatives or its clients or their relatives may have position(s), make market, act as principal or engage in transactions of securities of companies referred to in this report and they may have used the research material prior to publication.

PL may from time to time solicit or perform investment banking or other services for any company mentioned in this document.

PL is registered as Research Analyst under Securities and Exchange Board of India (Research Analysts) Regulations, 2014 PL submits that no material disciplinary action has been taken on us by any Regulatory Authority impacting Equity Research Analysis activities.

PL or its research analysts or its associates or his relatives do not have any financial interest in the subject company.

PL or its research analysts or its associates or his relatives do not have actual/beneficial ownership of one per cent or more securities of the subject company at the end of the month immediately preceding the date of publication of the research report.

PL or its research analysts or its associates or his relatives do not have any material conflict of interest at the time of publication of the research report.

PL or its associates might have received compensation from the subject company in the past twelve months.

PL or its associates might have managed or co-managed public offering of securities for the subject company in the past twelve months or mandated by the subject company for any other assignment in the past twelve months.

PL or its associates might have received any compensation for investment banking or merchant banking or brokerage services from the subject company in the past twelve months.

PL or its associates might have received any compensation for products or services other than investment banking or merchant banking or brokerage services from the subject company in the past twelve months PL or its associates might have received any compensation or other benefits from the subject company or third party in connection with the research report.

PL encourages independence in research report preparation and strives to minimize conflict in preparation of research report. PL or its analysts did not receive any compensation or other benefits from the subject Company or third party in connection with the preparation of the research report. PL or its Research Analysts do not have any material conflict of interest at the time of publication of this report.

It is confirmed that Mrs. Vaishali Parekh B.com, Research Analyst of this report has not received any compensation from the companies mentioned in the report in the preceding twelve months compensation of our Research Analysts is not based on any specific merchant banking, investment banking or brokerage service transactions.

The Research analysts for this report certifies that all of the views expressed in this report accurately reflect his or her personal views about the subject company or companies and its or their securities, and no part of his or her compensation was, is or will be, directly or indirectly related to specific recommendations or views expressed in this report.

The research analysts for this report has not served as an officer, director or employee of the subject company PL or its research analysts have not engaged in market making activity for the subject company

Our sales people, traders, and other professionals or affiliates may provide oral or written market commentary or trading strategies to our clients that reflect opinions that are contrary to the opinions expressed herein, and our proprietary trading and investing businesses may make investment decisions that are inconsistent with the recommendations expressed herein. In reviewing these materials, you should be aware that any or all of the foregoing, among other things, may give rise to real or potential conflicts of interest.

PL and its associates, their directors and employees may (a) from time to time, have a long or short position in, and buy or sell the securities of the subject company or (b) be engaged in any other transaction involving such securities and earn brokerage or other compensation or act as a market maker in the financial instruments of the subject company or act as an advisor or lender/borrower to the subject company or may have any other potential conflict of interests with respect to any recommendation and other related information and opinions.

Regd. Office: 3rd Floor, Sadhana House, 570, P. B. Marg, Behind Mahindra Tower, Worli, Mumbai - 400 018, India.