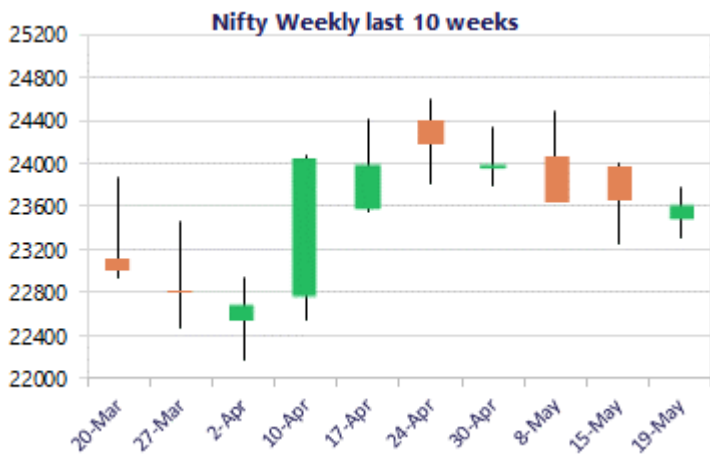
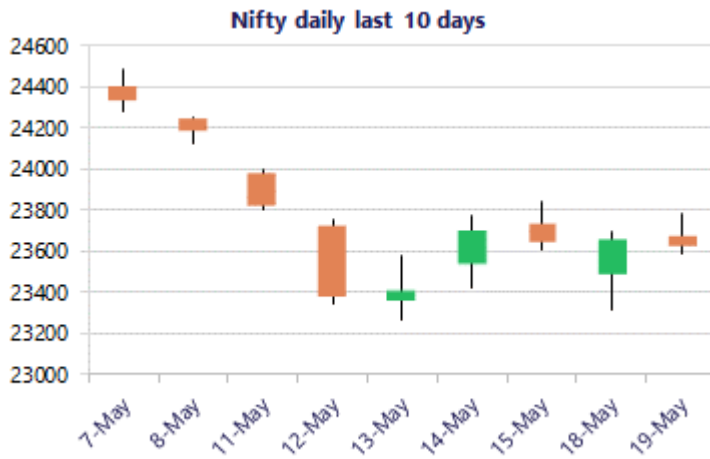


\* Sensex 75200.85 -114.19

\* Nifty 23618.00 -31.95

\* Bank Nifty 53409.15 -127.85



\*Blue candle → Close rate > Open rate \* Red candle → Close rate < Open rate

## Market Preview

### Nifty ends near 23600 zone

Nifty witnessed a rangebound session having the bias maintained with a cautious approach, however, the broader markets indicated some signs of improvement with active participation witnessed. BankNifty continue to stay sluggish with narrow movement and is precariously placed near the 53400 zone. The market breadth was positive with the advance decline indicating a ratio of 2:1 at close.

## Market Forecast

### Nifty daily range 23400 - 23800

Nifty witnessed a tough resistance near the 23770 zone during the intraday session and after a rangebound movement slipped down in the final hours to end near the 23600 zone with bias continue to be maintained with a cautious approach as of now. As mentioned earlier, the index would have the near-term support at 23200 zone which needs to be sustained to maintain the overall bias intact whereas on the upside, the 24300 band shall be the tough resistance hurdle which needs to be breached decisively to establish conviction.

BankNifty witnessed a narrow rangebound session resisting near the 53700 zone and the bottom was capped near the 53350 level and closed in the red near the crucial support zone of 53400 level with bias and sentiment precariously placed. As mentioned earlier, a decisive move below the 53500 zone shall open the gates for downward movement triggering for fresh targets of 51800 and the 50000 levels expected in the coming days while on the upside, a decisive move past the 50EMA level of 55500 level is necessary to establish conviction and improve the bias to some extent.

The support for the day is seen at 23400 levels, while the resistance is seen at 23800 levels. BankNifty would have the daily range of 52800-54400 levels.

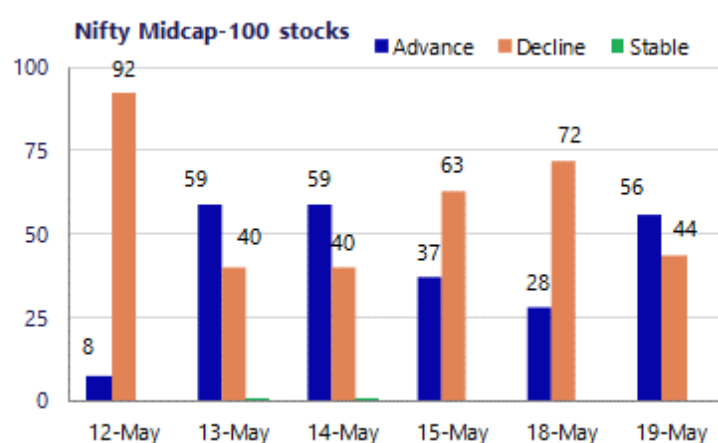
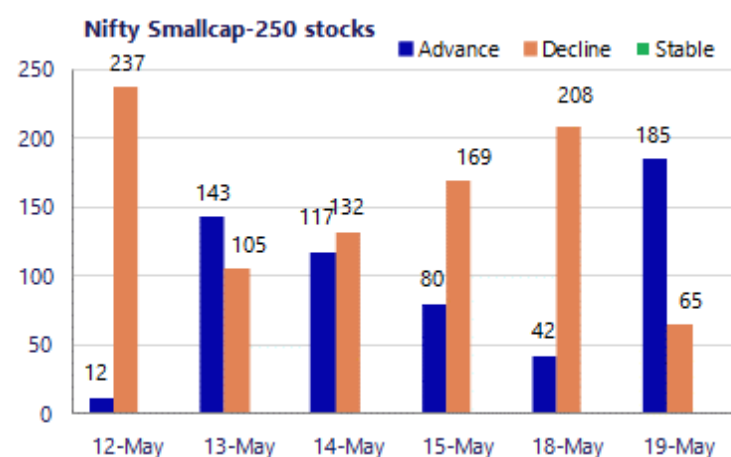
Sensex	Period	Closing	% Chng	Trend	Reversal	2 Sup	1 Sup	Pivot	1 Res	2 Res
Nifty	Daily	23618.00	-0.14%	-8	23578.40	23467	23543	23663	23738	23858
	Weekly	23643.50	-2.20%	6	23661.60	22900	23272	23635	24006	24369
	Monthly	23997.55	7.46%	-4	26009.10	21175	22586	23594	25005	26013
Bank Nifty	Daily	53409.15	-0.24%	-7	53554.80	53072	53241	53506	53674	53939
	Weekly	53710.35	-2.89%	-1	54330.15	52157	52934	53968	54745	55779
	Monthly	54863.35	9.13%	-2	62653.00	46590	50727	54092	58228	61593
Sensex	Daily	75200.85	-0.15%	-8	75067.60	74724	74962	75354	75593	75985
	Weekly	75237.99	-2.70%	6	75620.00	72806	74022	75350	76566	77894
	Monthly	76913.50	6.90%	-4	83783.80	68121	72517	75942	80338	83763

**Gainers - Losers ( Nifty 500 Stocks )**
**Gainers**

Company Name	Last Price	% Gain	Volume
Angel One	328	7.91%	303.95
eClerx Services	1,553.80	5.39%	1492.9
ABSL AMC	1036.9	5.03%	990.4
COFORGE	1,412.00	4.74%	1365
Asahi India	837.75	4.37%	800.5
Deepak Fert	1,324.50	4.09%	1276.8
Blue Jet	437.20	3.84%	421.05

**Losers**

Company Name	Last Price	% Loss	Volume
Astral Ltd	1,448.90	-6.26%	1545
Berger Paints	507.7	-3.22%	525
Data Patterns	3,634.50	-3.14%	3770
Escorts Kubota	2,890.80	-2.70%	2957.5
GAIL	156.12	-2.56%	160.32
Capri Global	182.39	-2.10%	187.23
Carborundum	1076.2	-2.01%	1096.7



### Nifty Daily chart with RSI indicator



### BankNifty Daily chart with RSI indicator

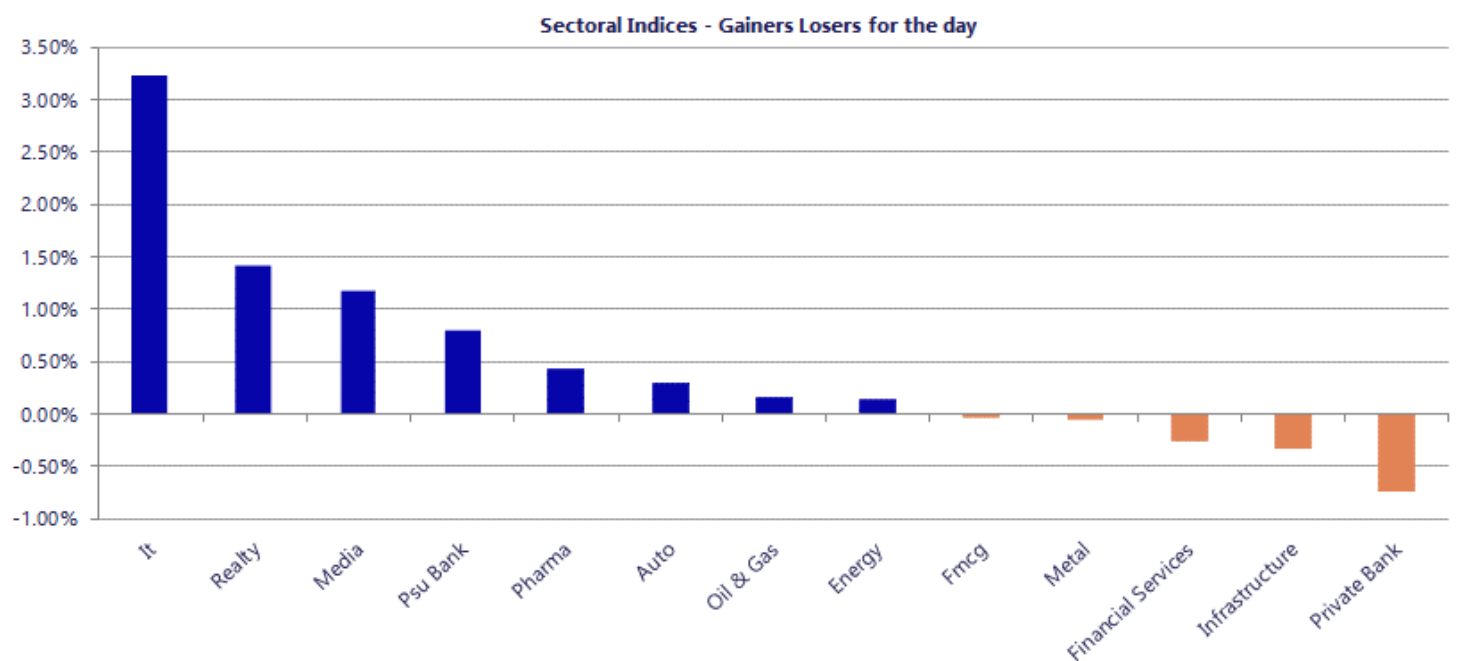


Breakouts - Cross above 200 DMA			
Company Name	LCP	Change %	200 DMA
Pyramid Techno	170.81	7.11	159.47
Fidel Softech	169.95	5.02	161.83
United Polyfab	34.67	4.87	33.06
Shiva Mills Lim	65.42	4.54	62.58
Shri Techtex	75	4.22	71.96
Diffusion Engin	329.7	4.22	316.36
Cosmo First	811.6	4.19	778.97
Deep Ind	474.05	4.07	455.49
Supriya Lifesci	720.6	4.00	692.89
Websol Energy	105.57	3.90	101.61
Plaza Wires	46.76	3.77	45.06
Tata Tech	668.55	3.76	644.33
NOCIL	171.62	3.72	165.46
Deepak Fert	1324.5	3.57	1278.89
Cera Sanitary	5773.5	3.46	5580.26
Divgi Torqtrans	675.7	3.40	653.47
Skipper	466.7	3.38	451.44
Tube Investment	2892.2	2.69	2816.57

Breakdown - Cross below 200 DMA			
Company Name	LCP	Change %	200 DMA
Jai Balaji Ind	77.39	-4.16	80.75
Sadhav Shipping	103.9	-3.76	107.96
Pramara Promoti	309.15	-3.22	319.43
Semac Construct	352.6	-2.78	362.69
Megatherm Induc	245.15	-1.78	249.59
FM	19206	-1.32	19462.99
DCG Cables & Wi	65	-1.26	65.83
Jayant Agro-Org	207.4	-1.14	209.79
Ind Motor Parts	1028.6	-0.86	1037.56
Berger Paints	507.7	-0.59	510.73
Capri Global	182.39	-0.50	183.3
Bhansali Eng	94.15	-0.34	94.47
Ipru Nifty Inf	95.16	-0.14	95.29
Orient Electric	188.88	-0.09	189.05

\* Stocks crossing above its Simple Moving Average (200DMA)

\* Stocks crossing below its Simple Moving Average (200DMA)



Nifty 50 Stocks - Summary Details											
Symbol	LTP	Chng	% Chng	Volume (lacs)	Turnover (crs.)	52w High	Diff with 52w H	52w Low	Diff with 52w L	365 days % chng	30 days % chng
NIFTY 50	23618.00	-31.95	-0.14%	4419.53	39326	26373	10.45%	22183	6.47%	-3.02%	-5.32%
ADANIENT	2712.70	22.90	0.85%	42.04	1152	2803	3.23%	1753	54.75%	22.29%	9.98%
ADANIPTS	1764.00	-23.70	-1.33%	22.75	406	1824	3.28%	1291	36.69%	12.11%	26.15%
APOLLOHOSP	8042.00	21.50	0.27%	3.96	319	8180	1.69%	6697	20.09%	4.46%	15.31%
ASIANPAINT	2597.60	-16.40	-0.63%	6.89	180	2986	13.00%	2115	22.82%	5.42%	11.42%
AXISBANK	1237.90	-	#VALUE!	92.00	1141	1418	12.72%	1043	18.74%	-8.92%	2.92%
BAJAJ-AUTO	10192.00	-6.50	-0.06%	1.52	155	10785	5.50%	7859	29.69%	4.28%	15.15%
BAJAJFINSV	1745.20	-7.90	-0.45%	6.40	112	2195	20.49%	1597	9.28%	-5.10%	-14.38%
BAJFINANCE	928.00	6.90	0.75%	83.14	769	1103	15.83%	788	17.78%	2.17%	0.26%
BEL	424.05	-2.55	-0.60%	133.50	569	473	10.43%	359	18.28%	-8.36%	16.58%
BHARTIARTL	1911.00	-27.10	-1.40%	89.62	1720	2175	12.12%	1741	9.80%	3.47%	5.10%
CIPLA	1409.10	-17.10	-1.20%	13.79	195	1673	15.77%	1166	20.88%	13.56%	-5.53%
COALINDIA	456.05	-6.05	-1.31%	73.20	334	491	7.17%	369	23.71%	3.94%	13.25%
DRREDDY	1334.00	2.80	0.21%	24.88	331	1380	3.31%	1148	16.16%	7.96%	9.43%
EICHERMOT	6869.50	-43.50	-0.63%	4.07	280	8230	16.53%	5220	31.61%	-4.45%	24.22%
ETERNAL	246.10	4.70	1.95%	330.45	812	368	33.21%	213	15.76%	-2.58%	3.39%
GRASIM	2928.00	-15.80	-0.54%	6.37	188	3007	2.64%	2503	17.00%	7.63%	7.37%
HCLTECH	1180.00	33.40	2.91%	57.57	680	1780	33.71%	1103	6.94%	-18.19%	-28.47%
HDFCBANK	762.80	-5.85	-0.76%	403.08	3087	1021	25.25%	727	4.97%	-4.64%	-21.31%
HDFCLIFE	611.25	6.30	1.04%	17.79	109	821	25.53%	555	10.12%	-0.84%	-18.60%
HINDALCO	1047.00	-6.10	-0.58%	36.74	385	1105	5.25%	618	69.42%	0.77%	59.03%
HINDUNILVR	2230.00	-24.20	-1.07%	11.45	258	2750	18.91%	2023	10.26%	-0.48%	-6.41%
ICICIBANK	1242.50	-8.60	-0.69%	389.29	4814	1500	17.17%	1188	4.62%	-7.74%	-14.25%
INDIGO	4227.00	-48.70	-1.14%	5.78	246	6233	32.18%	3895	8.52%	-8.87%	-24.17%
INFY	1194.00	51.50	4.51%	321.76	3831	1728	30.90%	1089	9.64%	-9.46%	-23.45%
ITC	310.00	-0.15	-0.05%	175.19	546	444	30.21%	287	8.01%	1.04%	-28.79%
JIOFIN	233.09	0.46	0.20%	95.90	225	339	31.16%	223	4.38%	-4.42%	-15.87%
JSWSTEEL	1283.70	-9.10	-0.70%	11.36	146	1314	2.31%	962	33.42%	3.50%	25.90%
KOTAKBANK	382.40	-9.40	-2.40%	225.68	868	453	15.62%	346	10.68%	-0.31%	-9.44%
LT	3910.00	-7.80	-0.20%	23.18	912	4440	11.94%	3288	18.91%	-4.54%	8.61%
M&M	3086.30	2.60	0.08%	31.52	979	3840	19.63%	2896	6.57%	-3.56%	-1.33%
MARUTI	12924.00	-92.00	-0.71%	3.43	446	17370	25.60%	12016	7.56%	-3.93%	-0.50%
MAXHEALTH	1064.00	5.45	0.51%	21.03	225	1314	19.04%	903	17.83%	5.59%	-10.44%
NESTLEIND	1429.20	-2.50	-0.17%	18.04	260	1498	4.60%	1085	31.76%	11.17%	18.71%
NTPC	388.00	-0.30	-0.08%	66.94	261	414	6.37%	316	22.96%	-1.42%	12.41%
ONGC	296.45	-0.75	-0.25%	95.65	284	308	3.59%	229	29.67%	4.37%	20.22%
POWERGRID	298.25	1.70	0.57%	125.80	375	325	8.22%	250	19.30%	-6.24%	-1.91%
RELIANCE	1322.80	-13.10	-0.98%	216.66	2886	1612	17.93%	1290	2.54%	-3.09%	-8.19%
SBILIFE	1887.70	27.30	1.47%	13.52	254	2132	11.46%	1720	9.75%	-4.22%	6.65%
SBIN	946.90	7.50	0.80%	172.81	1638	1235	23.31%	779	21.54%	-12.34%	19.11%
SHRIRAMFIN	927.00	-6.70	-0.72%	32.16	299	1108	16.34%	567	63.64%	-10.60%	36.77%
SUNPHARMA	1884.70	-21.10	-1.11%	22.01	417	1917	1.66%	1548	21.75%	12.49%	8.93%
TATACONSUM	1211.00	-20.00	-1.62%	21.64	264	1283	5.59%	1007	20.23%	8.79%	5.37%
TATASTEEL	209.00	-0.71	-0.34%	325.74	686	224	6.86%	150	39.52%	-1.47%	32.64%
TCS	2330.00	46.80	2.05%	103.95	2440	3558	34.51%	2206	5.60%	-9.74%	-33.78%
TECHM	1467.00	37.00	2.59%	66.97	994	1854	20.87%	1304	12.49%	-2.94%	-8.19%
TITAN	4095.00	-74.70	-1.79%	7.11	294	4605	11.07%	3303	23.97%	-9.52%	13.19%
TMPV	360.50	7.35	2.08%	151.20	547	744	51.55%	294	22.49%	0.11%	-50.58%
TRENT	4073.90	41.60	1.03%	5.19	212	6261	34.93%	3276	24.37%	-0.82%	-26.61%
ULTRACEMCO	11355.00	-206.00	-1.78%	3.48	396	13110	13.39%	10325	9.98%	-4.47%	-4.81%
WIPRO	195.50	3.33	1.73%	205.35	403	273	28.41%	187	4.83%	-4.32%	-22.34%

## Disclaimer / Disclosures

### ANALYST CERTIFICATION

I, Mrs. Vaishali Parekh B.com, Research Analyst, author and the name subscribed to this report, hereby certify that all of the views expressed in this research report accurately reflect our views about the subject issuer(s) or securities. We also certify that no part of our compensation was, is, or will be directly or indirectly related to the specific recommendation(s) or view(s) in this report.

Terms & conditions and other disclosures:

Prabhudas Lilladher Pvt. Ltd, Mumbai, India (hereinafter referred to as "PL") is engaged in the business of Stock Broking, Portfolio Manager, Depository Participant and distribution for third party financial products. PL is a subsidiary of Prabhudas Lilladher Advisory Services Pvt Ltd. which has its various subsidiaries engaged in business of commodity broking, investment banking, financial services (margin funding) and distribution of third party financial/other products, details in respect of which are available at [www.plindia.com](http://www.plindia.com)

This document has been prepared by the Research Division of PL and is meant for use by the recipient only as information and is not for circulation. This document is not to be reported or copied or made available to others without prior permission of PL. It should not be considered or taken as an offer to sell or a solicitation to buy or sell any security.

The information contained in this report has been obtained from sources that are considered to be reliable. However, PL has not independently verified the accuracy or completeness of the same. Neither PL nor any of its affiliates, its directors or its employees accepts any responsibility of whatsoever nature for the information, statements and opinion given, made available or expressed herein or for any omission therein.

Recipients of this report should be aware that past performance is not necessarily a guide to future performance and value of investments can go down as well. The suitability or otherwise of any investments will depend upon the recipient's particular circumstances and, in case of doubt, advice should be sought from an independent expert/advisor.

Either PL or its affiliates or its directors or its employees or its representatives or its clients or their relatives may have position(s), make market, act as principal or engage in transactions of securities of companies referred to in this report and they may have used the research material prior to publication.

PL may from time to time solicit or perform investment banking or other services for any company mentioned in this document.

PL is registered as Research Analyst under Securities and Exchange Board of India (Research Analysts) Regulations, 2014 PL submits that no material disciplinary action has been taken on us by any Regulatory Authority impacting Equity Research Analysis activities.

PL or its research analysts or its associates or his relatives do not have any financial interest in the subject company.

PL or its research analysts or its associates or his relatives do not have actual/beneficial ownership of one per cent or more securities of the subject company at the end of the month immediately preceding the date of publication of the research report.

PL or its research analysts or its associates or his relatives do not have any material conflict of interest at the time of publication of the research report.

PL or its associates might have received compensation from the subject company in the past twelve months.

PL or its associates might have managed or co-managed public offering of securities for the subject company in the past twelve months or mandated by the subject company for any other assignment in the past twelve months.

PL or its associates might have received any compensation for investment banking or merchant banking or brokerage services from the subject company in the past twelve months.

PL or its associates might have received any compensation for products or services other than investment banking or merchant banking or brokerage services from the subject company in the past twelve months PL or its associates might have received any compensation or other benefits from the subject company or third party in connection with the research report.

PL encourages independence in research report preparation and strives to minimize conflict in preparation of research report. PL or its analysts did not receive any compensation or other benefits from the subject Company or third party in connection with the preparation of the research report. PL or its Research Analysts do not have any material conflict of interest at the time of publication of this report.

It is confirmed that Mrs. Vaishali Parekh B.com, Research Analyst of this report has not received any compensation from the companies mentioned in the report in the preceding twelve months compensation of our Research Analysts is not based on any specific merchant banking, investment banking or brokerage service transactions.

The Research analysts for this report certifies that all of the views expressed in this report accurately reflect his or her personal views about the subject company or companies and its or their securities, and no part of his or her compensation was, is or will be, directly or indirectly related to specific recommendations or views expressed in this report.

The research analysts for this report has not served as an officer, director or employee of the subject company PL or its research analysts have not engaged in market making activity for the subject company

Our sales people, traders, and other professionals or affiliates may provide oral or written market commentary or trading strategies to our clients that reflect opinions that are contrary to the opinions expressed herein, and our proprietary trading and investing businesses may make investment decisions that are inconsistent with the recommendations expressed herein. In reviewing these materials, you should be aware that any or all of the foregoing, among other things, may give rise to real or potential conflicts of interest.

PL and its associates, their directors and employees may (a) from time to time, have a long or short position in, and buy or sell the securities of the subject company or (b) be engaged in any other transaction involving such securities and earn brokerage or other compensation or act as a market maker in the financial instruments of the subject company or act as an advisor or lender/borrower to the subject company or may have any other potential conflict of interests with respect to any recommendation and other related information and opinions.

**Regd. Office:** 3<sup>rd</sup> Floor, Sadhana House, 570, P. B. Marg, Behind Mahindra Tower, Worli, Mumbai - 400 018, India.