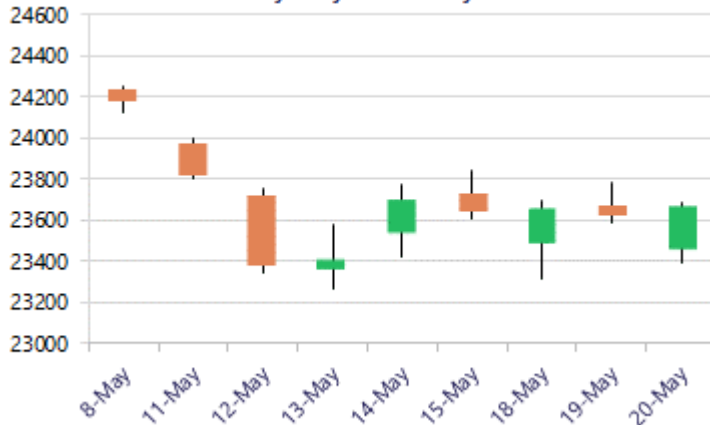


* Sensex 75318.39 + 117.54

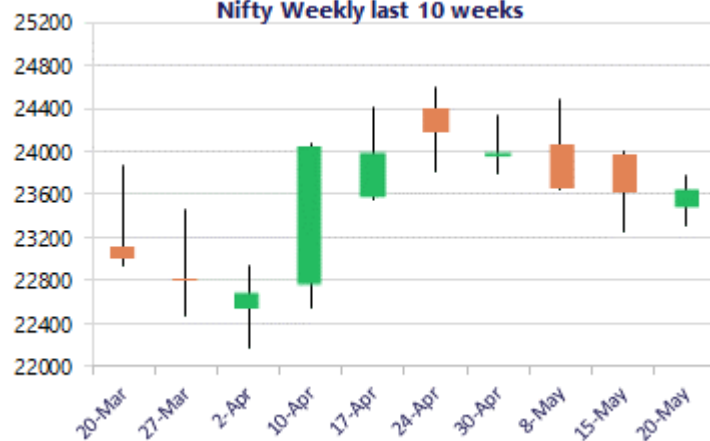
* Nifty 23659.00 + 41.00

* Bank Nifty 53562.20 + 153.05

Nifty daily last 10 days



Nifty Weekly last 10 weeks



*Blue candle → Close rate > Open rate * Red candle → Close rate < Open rate

Market Preview

Nifty in consolidation near 23500 zone

Nifty once again recovered after the weak opening session and managed to end above the 23600 zone with bias still maintained with a cautious approach. BankNifty continue to remain subdued with a pullback witnessed from the low of 52800 zone to end in the green near 53500 level. The market breadth was flat with the advance decline indicating a neutral ratio at close.

Market Forecast

Nifty daily range 23400 - 23800

Nifty after opening in the red near 23450 zone, once gain witnessed a recovery and as the day progressed ahead with a gradual rise closed near the 23650 level with overall rangebound movement visible on the daily chart with bias and sentiment continue to be maintained with a cautious approach as of now. Technically as we have been mentioning, the index would have the near-term support at 23200 zone which needs to be sustained to maintain the overall bias intact whereas on the upside, the 24300 band shall be the tough resistance hurdle which needs to be breached decisively.

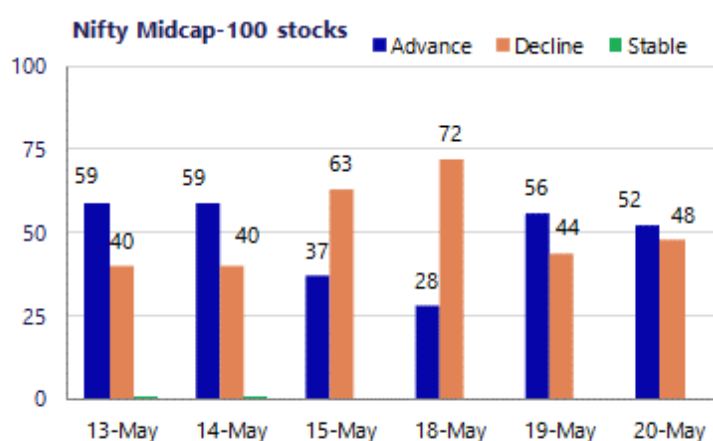
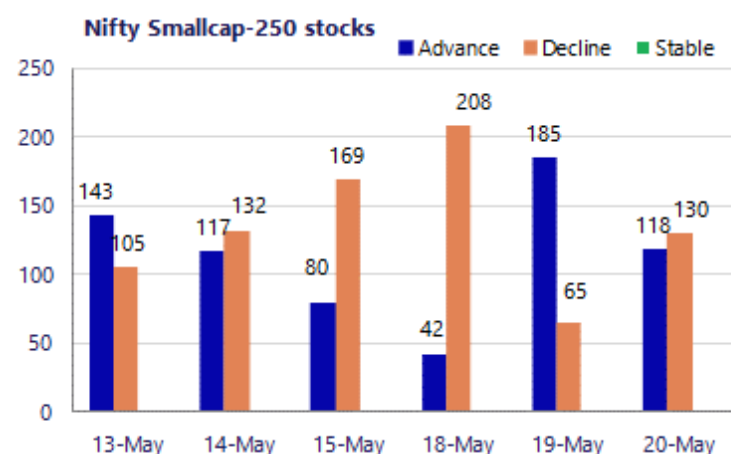
BankNifty witnessing a weak opening session near the 52800 zone, indicated a gradual bounce back to end in the green just above the 53500 zone which is the crucial and important zone which needs to be sustained as of now to maintain the overall bias intact. As mentioned earlier, a decisive move below the 53500 zone shall further weaken the trend opening the gates for downward movement and triggering for fresh targets of 51800 and the 50000 levels. On the upside, a decisive move past the 50EMA level of 55500 level is much needed to establish conviction and improve the bias to some extent.

The support for the day is seen at 23400 levels, while the resistance is seen at 23800 levels. BankNifty would have the daily range of 52800-54400 levels.

Sensex	Period	Closing	% Chng	Trend	Reversal	2 Sup	1 Sup	Pivot	1 Res	2 Res
Nifty	Daily	23659.00	0.17%	1	23565.60	23289	23474	23582	23768	23876
	Weekly	23643.50	-2.20%	6	23661.60	22900	23272	23635	24006	24369
	Monthly	23997.55	7.46%	-4	26009.10	21175	22586	23594	25005	26013
Bank Nifty	Daily	53562.20	0.29%	1	53480.85	52542	53052	53346	53857	54151
	Weekly	53710.35	-2.89%	-1	54330.15	52157	52934	53968	54745	55779
	Monthly	54863.35	9.13%	-2	62653.00	46590	50727	54092	58228	61593
Sensex	Daily	75318.39	0.16%	1	75004.90	74208	74763	75085	75640	75961
	Weekly	75237.99	-2.70%	6	75620.00	72806	74022	75350	76566	77894
	Monthly	76913.50	6.90%	-4	83783.80	68121	72517	75942	80338	83763

Gainers - Losers (Nifty 500 Stocks)

Gainers				Losers			
Company Name	Last Price	% Gain	Volume	Company Name	Last Price	% Loss	Volume
APTUS VALUE	269.1	5.72%	253	Balrampur Chini	530.75	-3.58%	550
Data Patterns	3,834.10	5.49%	3615	Afcons Infra	305.4	-3.28%	310
Elgi Equipments	565.25	4.46%	536.65	AWL Agri	196.73	-2.69%	199.43
ABB India	6,605.00	4.36%	6260	Bharat Elec	413.30	-2.28%	416.3
CG Power	853.25	4.13%	819.4	Avenue Supermar	4,144.20	-2.17%	4235
Chennai Petro	1,012.20	3.03%	982.4	3M India	31140	-2.11%	31700
Apar Ind	12,676.00	2.83%	12150	Adani Total Gas	610.6	-2.04%	617.95



Nifty Daily chart with RSI indicator



BankNifty Daily chart with RSI indicator

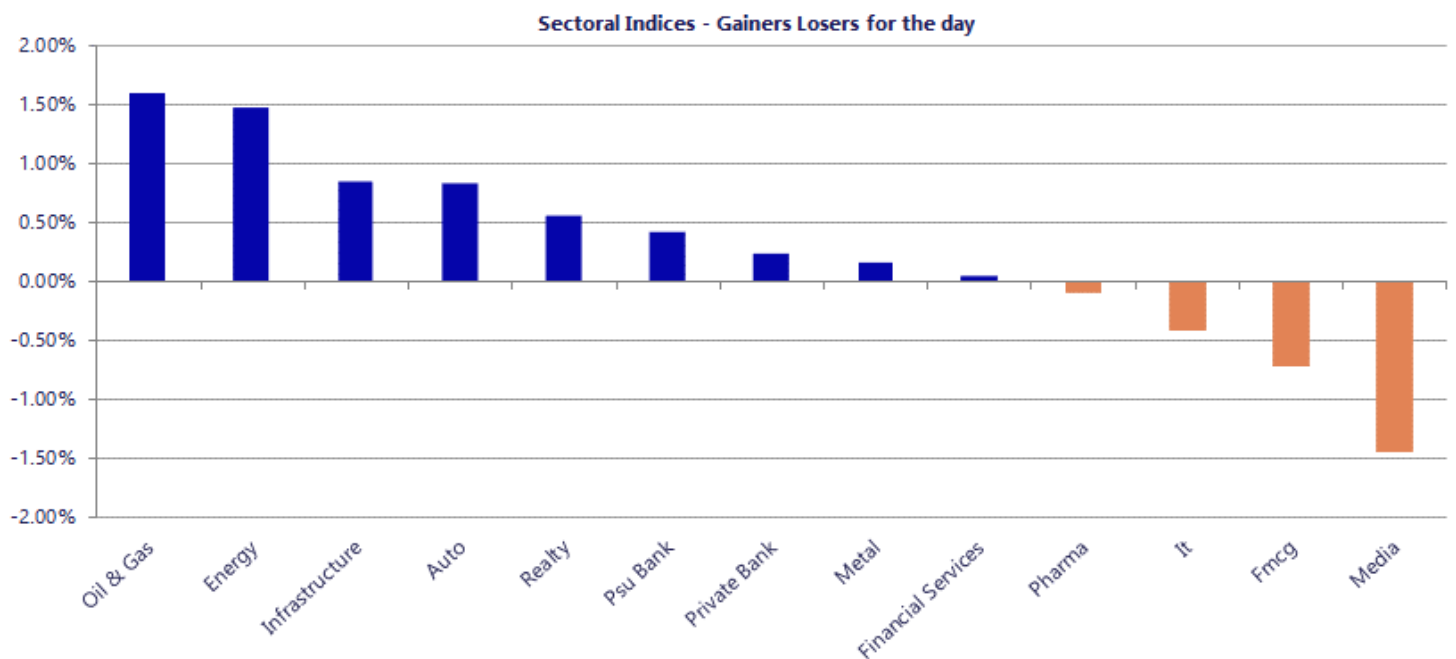


Breakouts - Cross above 200 DMA			
Company Name	LCP	Change %	200 DMA
Borosil Sci	142.49	14.18	124.79
Jay BharatMarut	103.27	12.60	91.71
KDDL	2614.2	7.73	2426.56
Tata Comm	1775.6	6.27	1670.79
IGIL	352.3	4.15	338.26
Nath Bio-Genes	166.88	4.11	160.29
NAVA	627.35	4.04	602.99
Kalyani Invest	5066.6	3.40	4900.02
Kanpur Plast	203.99	3.16	197.74
Saregama India	406.5	2.84	395.26
Foseco India	5279.3	2.07	5172.05
Sadhav Shipping	110	1.97	107.88
Prozone Intu	53.15	1.84	52.19
Bal Pharma	79.88	1.82	78.45
Kriti Nutrients	84.06	1.69	82.66
NIBE	1174.6	1.66	1155.43
Medico Remedies	45.96	1.64	45.22
Capri Global	185.93	1.45	183.28

* Stocks crossing above its Simple Moving Average (200DMA)

Breakdown - Cross below 200 DMA			
Company Name	LCP	Change %	200 DMA
Kirloskar Ind	3175.9	-7.43	3430.82
Le Merite	416.95	-5.29	440.25
Vishwas Agri	51	-3.90	53.07
Rockingdeals	194.8	-3.80	202.49
Supreme Petro	688.25	-2.61	706.66
Shree Pushkar	357	-2.60	366.52
Suryalakshmi Co	58.69	-2.04	59.91
Globe Internati	40.24	-1.40	40.81
Nitco	95.88	-1.38	97.22
CreditAccess Gr	1293.9	-1.07	1307.89
Powergrid	92	-1.05	92.98
Styrenix	2208.5	-0.99	2230.6
JTL Ind.	66.17	-0.75	66.67
India Cements	400.25	-0.72	403.14
NESCO	1247.9	-0.70	1256.75
Nitiraj Enginee	196.33	-0.55	197.42
Ganesha Ecosph	1021.9	-0.54	1027.41
Industrial Inv	162.38	-0.53	163.25

* Stocks crossing below its Simple Moving Average (200DMA)



Nifty 50 Stocks - Summary Details											
Symbol	LTP	Chng	% Chng	Volume (lacs)	Turnover (crs.)	52w High	Diff with 52w H	52w Low	Diff with 52w L	365 days % chng	30 days % chng
NIFTY 50	23659.00	41.00	0.17%	3440.17	26162	26373	10.29%	22183	6.66%	-2.90%	-4.15%
ADANIENT	2705.50	-19.50	-0.72%	11.87	321	2803	3.48%	1753	54.34%	21.34%	11.40%
ADANIPTS	1770.00	7.20	0.41%	12.83	227	1824	2.96%	1291	37.16%	12.14%	27.83%
APOLLOHOSP	8075.00	49.00	0.61%	4.92	396	8180	1.28%	6697	20.59%	5.46%	16.83%
ASIANPAINT	2605.00	4.30	0.17%	5.86	152	2986	12.75%	2115	23.17%	3.50%	13.48%
AXISBANK	1251.20	12.90	1.04%	35.63	443	1418	11.78%	1043	20.02%	-7.64%	4.63%
BAJAJ-AUTO	10462.50	257.50	2.52%	3.80	394	10785	2.99%	7859	33.14%	6.73%	22.15%
BAJAJFINSV	1761.80	12.00	0.69%	7.79	137	2195	19.74%	1597	10.32%	-3.76%	-12.13%
BAJFINANCE	925.45	1.90	0.21%	58.65	539	1103	16.06%	788	17.46%	0.84%	1.93%
BEL	413.35	-9.60	-2.27%	280.11	1154	473	12.69%	359	15.30%	-9.66%	13.62%
BHARTIARTL	1908.20	-5.30	-0.28%	57.78	1101	2175	12.25%	1741	9.64%	3.36%	5.49%
CIPLA	1400.10	-9.70	-0.69%	13.16	186	1673	16.31%	1166	20.11%	13.88%	-3.73%
COALINDIA	459.00	2.05	0.45%	37.55	172	491	6.56%	369	24.51%	3.90%	12.47%
DRREDDY	1320.90	-14.30	-1.07%	12.77	169	1380	4.26%	1148	15.02%	7.16%	7.90%
EICHERMOT	6859.00	-23.50	-0.34%	4.55	312	8230	16.66%	5220	31.41%	-5.30%	27.31%
ETERNAL	243.50	-3.71	-1.50%	234.17	571	368	33.91%	213	14.53%	-4.46%	6.67%
GRASIM	2983.00	47.80	1.63%	13.06	383	3007	0.81%	2503	19.20%	8.08%	9.64%
HCLTECH	1172.20	-7.20	-0.61%	14.16	166	1780	34.15%	1103	6.24%	-17.93%	-28.45%
HDFCBANK	760.10	-2.35	-0.31%	240.13	1823	1021	25.52%	727	4.60%	-4.44%	-20.61%
HDFCLIFE	605.35	-5.05	-0.83%	36.98	225	821	26.24%	555	9.05%	-0.72%	-18.97%
HINDALCO	1085.00	36.70	3.50%	119.45	1291	1105	1.81%	618	75.57%	6.87%	63.71%
HINDUNILVR	2212.00	-20.90	-0.94%	10.72	237	2750	19.56%	2023	9.37%	-0.87%	-5.51%
ICICIBANK	1236.50	-4.30	-0.35%	149.52	1843	1500	17.57%	1188	4.12%	-8.83%	-14.02%
INDIGO	4274.20	43.90	1.04%	7.60	321	6233	31.42%	3895	9.73%	-8.64%	-21.46%
INFY	1190.00	-6.90	-0.58%	151.20	1807	1728	31.13%	1089	9.27%	-9.34%	-23.75%
ITC	307.90	-2.40	-0.77%	121.25	373	444	30.68%	287	7.28%	0.95%	-29.20%
JIOFIN	234.80	1.52	0.65%	113.02	263	339	30.66%	223	5.15%	-0.99%	-13.50%
JSWSTEEL	1278.40	-6.80	-0.53%	10.39	132	1314	2.71%	962	32.87%	0.31%	26.24%
KOTAKBANK	383.00	1.05	0.27%	123.41	471	453	15.49%	346	10.85%	1.00%	-8.38%
LT	3912.00	-9.00	-0.23%	19.72	773	4440	11.89%	3288	18.97%	-3.43%	9.65%
M&M	3119.90	27.60	0.89%	23.31	723	3840	18.75%	2896	7.73%	-3.16%	1.84%
MARUTI	13004.00	48.00	0.37%	3.01	389	17370	25.14%	12016	8.22%	-3.32%	2.90%
MAXHEALTH	1076.95	8.20	0.77%	17.68	189	1314	18.06%	903	19.26%	6.49%	-7.53%
NESTLEIND	1422.20	-9.20	-0.64%	14.25	202	1498	5.07%	1085	31.11%	10.56%	20.60%
NTPC	392.50	3.10	0.80%	53.86	210	414	5.28%	316	24.39%	-1.38%	14.57%
ONGC	298.65	2.15	0.73%	122.58	367	308	2.88%	229	30.64%	5.40%	19.81%
POWERGRID	300.70	2.10	0.70%	56.72	169	325	7.46%	250	20.28%	-5.94%	0.94%
RELIANCE	1360.30	37.60	2.84%	132.48	1782	1612	15.60%	1290	5.45%	-0.22%	-4.51%
SBILIFE	1861.10	-20.30	-1.08%	5.64	105	2132	12.71%	1720	8.20%	-6.12%	5.88%
SBIN	950.00	1.20	0.13%	119.26	1128	1235	23.06%	779	21.94%	-14.25%	20.92%
SHRIRAMFIN	925.00	-2.35	-0.25%	57.64	530	1108	16.52%	567	63.28%	-11.50%	40.50%
SUNPHARMA	1880.00	-2.30	-0.12%	13.77	259	1917	1.91%	1548	21.45%	12.67%	10.08%
TATACONSUM	1210.00	-0.90	-0.07%	17.18	208	1283	5.67%	1007	20.14%	8.00%	7.22%
TATASTEEL	207.00	-2.29	-1.09%	566.68	1161	224	7.75%	150	38.18%	-2.23%	30.44%
TCS	2324.10	-3.00	-0.13%	25.37	592	3558	34.68%	2206	5.33%	-9.90%	-33.56%
TECHM	1439.00	-28.10	-1.92%	22.16	323	1854	22.38%	1304	10.34%	-4.35%	-8.69%
TITAN	4104.70	2.70	0.07%	9.14	374	4605	10.86%	3303	24.27%	-9.05%	14.64%
TMPV	360.85	-0.35	-0.10%	98.73	357	744	51.50%	294	22.61%	1.45%	-49.81%
TRENT	4113.00	43.40	1.07%	5.01	204	6261	34.31%	3276	25.57%	-3.06%	-24.53%
ULTRACEMCO	11429.00	61.00	0.54%	1.68	191	13110	12.82%	10325	10.69%	-4.09%	-2.29%
WIPRO	197.20	2.03	1.04%	161.94	318	273	27.79%	187	5.74%	-2.61%	-21.03%

Disclaimer / Disclosures

ANALYST CERTIFICATION

I, Mrs. Vaishali Parekh B.com, Research Analyst, author and the name subscribed to this report, hereby certify that all of the views expressed in this research report accurately reflect our views about the subject issuer(s) or securities. We also certify that no part of our compensation was, is, or will be directly or indirectly related to the specific recommendation(s) or view(s) in this report.

Terms & conditions and other disclosures:

Prabhudas Lilladher Pvt. Ltd, Mumbai, India (hereinafter referred to as "PL") is engaged in the business of Stock Broking, Portfolio Manager, Depository Participant and distribution for third party financial products. PL is a subsidiary of Prabhudas Lilladher Advisory Services Pvt Ltd. which has its various subsidiaries engaged in business of commodity broking, investment banking, financial services (margin funding) and distribution of third party financial/other products, details in respect of which are available at www.plindia.com

This document has been prepared by the Research Division of PL and is meant for use by the recipient only as information and is not for circulation. This document is not to be reported or copied or made available to others without prior permission of PL. It should not be considered or taken as an offer to sell or a solicitation to buy or sell any security.

The information contained in this report has been obtained from sources that are considered to be reliable. However, PL has not independently verified the accuracy or completeness of the same. Neither PL nor any of its affiliates, its directors or its employees accepts any responsibility of whatsoever nature for the information, statements and opinion given, made available or expressed herein or for any omission therein.

Recipients of this report should be aware that past performance is not necessarily a guide to future performance and value of investments can go down as well. The suitability or otherwise of any investments will depend upon the recipient's particular circumstances and, in case of doubt, advice should be sought from an independent expert/advisor.

Either PL or its affiliates or its directors or its employees or its representatives or its clients or their relatives may have position(s), make market, act as principal or engage in transactions of securities of companies referred to in this report and they may have used the research material prior to publication.

PL may from time to time solicit or perform investment banking or other services for any company mentioned in this document.

PL is registered as Research Analyst under Securities and Exchange Board of India (Research Analysts) Regulations, 2014 PL submits that no material disciplinary action has been taken on us by any Regulatory Authority impacting Equity Research Analysis activities.

PL or its research analysts or its associates or his relatives do not have any financial interest in the subject company.

PL or its research analysts or its associates or his relatives do not have actual/beneficial ownership of one per cent or more securities of the subject company at the end of the month immediately preceding the date of publication of the research report.

PL or its research analysts or its associates or his relatives do not have any material conflict of interest at the time of publication of the research report.

PL or its associates might have received compensation from the subject company in the past twelve months.

PL or its associates might have managed or co-managed public offering of securities for the subject company in the past twelve months or mandated by the subject company for any other assignment in the past twelve months.

PL or its associates might have received any compensation for investment banking or merchant banking or brokerage services from the subject company in the past twelve months.

PL or its associates might have received any compensation for products or services other than investment banking or merchant banking or brokerage services from the subject company in the past twelve months PL or its associates might have received any compensation or other benefits from the subject company or third party in connection with the research report.

PL encourages independence in research report preparation and strives to minimize conflict in preparation of research report. PL or its analysts did not receive any compensation or other benefits from the subject Company or third party in connection with the preparation of the research report. PL or its Research Analysts do not have any material conflict of interest at the time of publication of this report.

It is confirmed that Mrs. Vaishali Parekh B.com, Research Analyst of this report has not received any compensation from the companies mentioned in the report in the preceding twelve months compensation of our Research Analysts is not based on any specific merchant banking, investment banking or brokerage service transactions.

The Research analysts for this report certifies that all of the views expressed in this report accurately reflect his or her personal views about the subject company or companies and its or their securities, and no part of his or her compensation was, is or will be, directly or indirectly related to specific recommendations or views expressed in this report.

The research analysts for this report has not served as an officer, director or employee of the subject company PL or its research analysts have not engaged in market making activity for the subject company

Our sales people, traders, and other professionals or affiliates may provide oral or written market commentary or trading strategies to our clients that reflect opinions that are contrary to the opinions expressed herein, and our proprietary trading and investing businesses may make investment decisions that are inconsistent with the recommendations expressed herein. In reviewing these materials, you should be aware that any or all of the foregoing, among other things, may give rise to real or potential conflicts of interest.

PL and its associates, their directors and employees may (a) from time to time, have a long or short position in, and buy or sell the securities of the subject company or (b) be engaged in any other transaction involving such securities and earn brokerage or other compensation or act as a market maker in the financial instruments of the subject company or act as an advisor or lender/borrower to the subject company or may have any other potential conflict of interests with respect to any recommendation and other related information and opinions.

Regd. Office: 3rd Floor, Sadhana House, 570, P. B. Marg, Behind Mahindra Tower, Worli, Mumbai - 400 018, India.