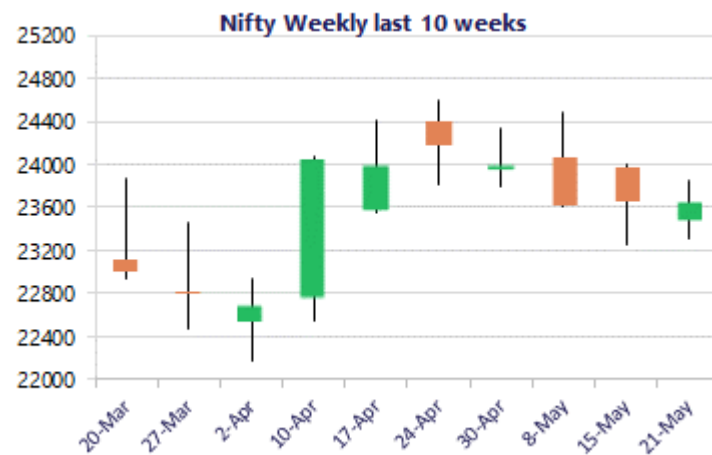
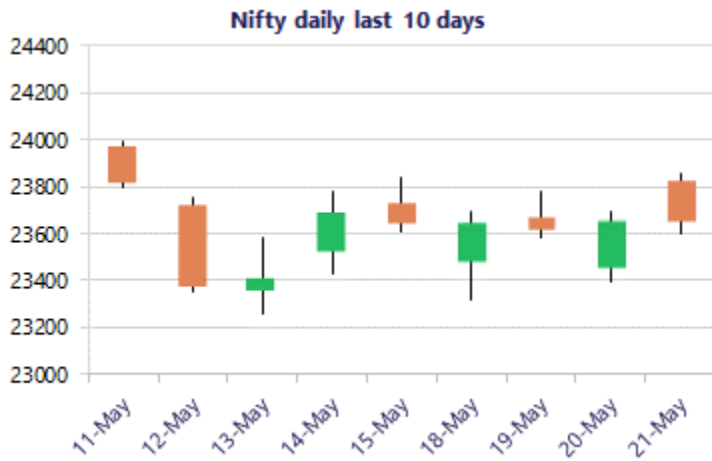


\* Sensex 75183.36 -135.03

\* Nifty 23654.00 -04.30

\* Bank Nifty 53439.40 -122.80



\*Blue candle → Close rate > Open rate \* Red candle → Close rate < Open rate

## Market Preview

### Nifty gripped in a tight range

Nifty opened in the green but slipped down with profit booking seen and overall is gripped tightly between the range of 23800 and 23200 zone for quite some time having the bias maintained with a cautious approach. BankNifty once again failed to move past the 54000 zone and with profit booking seen ended once again near the 53500 zone with bias precariously placed. The market breadth was slightly positive with the advance decline indicating a ratio of 4:3 at close.

## Market Forecast

### Nifty daily range 23400 - 23800

Nifty continued to remain rangebound opening near the 23800 zone and fizzled out as the day progressed to end on a flat note near the 23650 level with the bias and sentiment maintained with a cautious approach as mentioned earlier. Technically, the index would have the near-term support at 23200 zone which needs to be sustained to maintain the overall bias intact whereas on the upside, the 24300 band shall be the tough resistance hurdle which needs to be breached decisively.

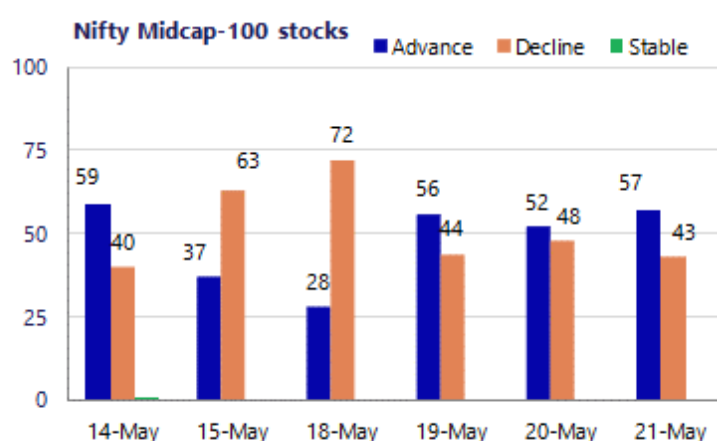
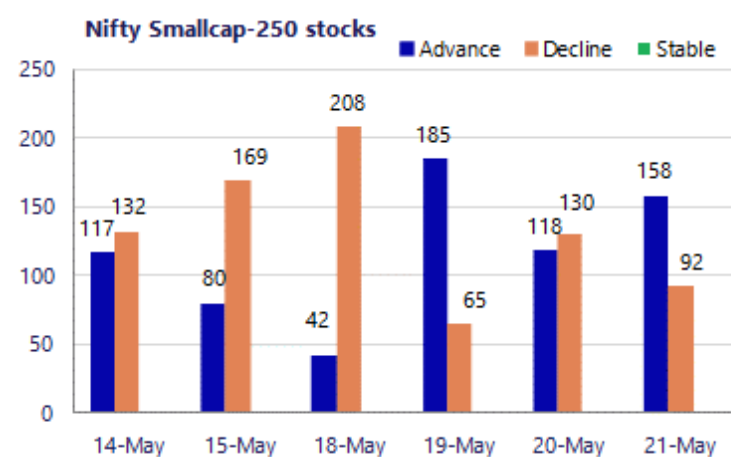
BankNifty opened in the green near 54000 zone but slipped down erasing the gains as the day progressed ahead to end near the 53450 level with bias still precariously placed having the near-term support at 52800 zone and a decisive move below shall further weaken the trend opening the gates for downward movement and triggering for fresh targets of 51800 and the 50000 levels. On the upside, a decisive move past the 54500 level is much needed to improve the bias to some extent.

The support for the day is seen at 23400 levels, while the resistance is seen at 23800 levels. BankNifty would have the daily range of 52800-54400 levels.

Sensex	Period	Closing	% Chng	Trend	Reversal	2 Sup	1 Sup	Pivot	1 Res	2 Res
Nifty	Daily	23654.70	-0.02%	2	23611.50	23440	23548	23704	23811	23967
	Weekly	23643.50	-2.20%	6	23661.60	22900	23272	23635	24006	24369
	Monthly	23997.55	7.46%	-4	26009.10	21175	22586	23594	25005	26013
Bank Nifty	Daily	53439.40	-0.23%	-1	53491.70	52615	53027	53568	53980	54521
	Weekly	53710.35	-2.89%	-1	54330.15	52157	52934	53968	54745	55779
	Monthly	54863.35	9.13%	-2	62653.00	46590	50727	54092	58228	61593
Sensex	Daily	75183.36	-0.18%	2	75124.40	74426	74805	75375	75754	76324
	Weekly	75237.99	-2.70%	6	75620.00	72806	74022	75350	76566	77894
	Monthly	76913.50	6.90%	-4	83783.80	68121	72517	75942	80338	83763

**Gainers - Losers ( Nifty 500 Stocks )**

Gainers				Losers			
Company Name	Last Price	% Gain	Volume	Company Name	Last Price	% Loss	Volume
Amber Enterpris	7537	6.92%	7150	Bosch	35,210.00	-4.40%	37190
Aditya Birla F	66.76	6.76%	62.87	Action Const	867.7	-3.25%	889.05
Angel One	339.65	4.51%	327.8	Ather Energy	889.30	-2.17%	916
Adani Total Gas	638.10	4.50%	616	Aditya Birla Re	1,254.70	-1.90%	1285.7
Anant Raj	510.25	4.41%	496	Bikaji Foods	664.45	-1.82%	686.95
Aarti Ind	482.75	4.19%	465.7	Berger Paints	499.35	-1.79%	513.95
Acutaas Chem	3,000.40	4.16%	2890	C. E. Info Syst	895.95	-1.75%	913



### Nifty Daily chart with RSI indicator



### BankNifty Daily chart with RSI indicator

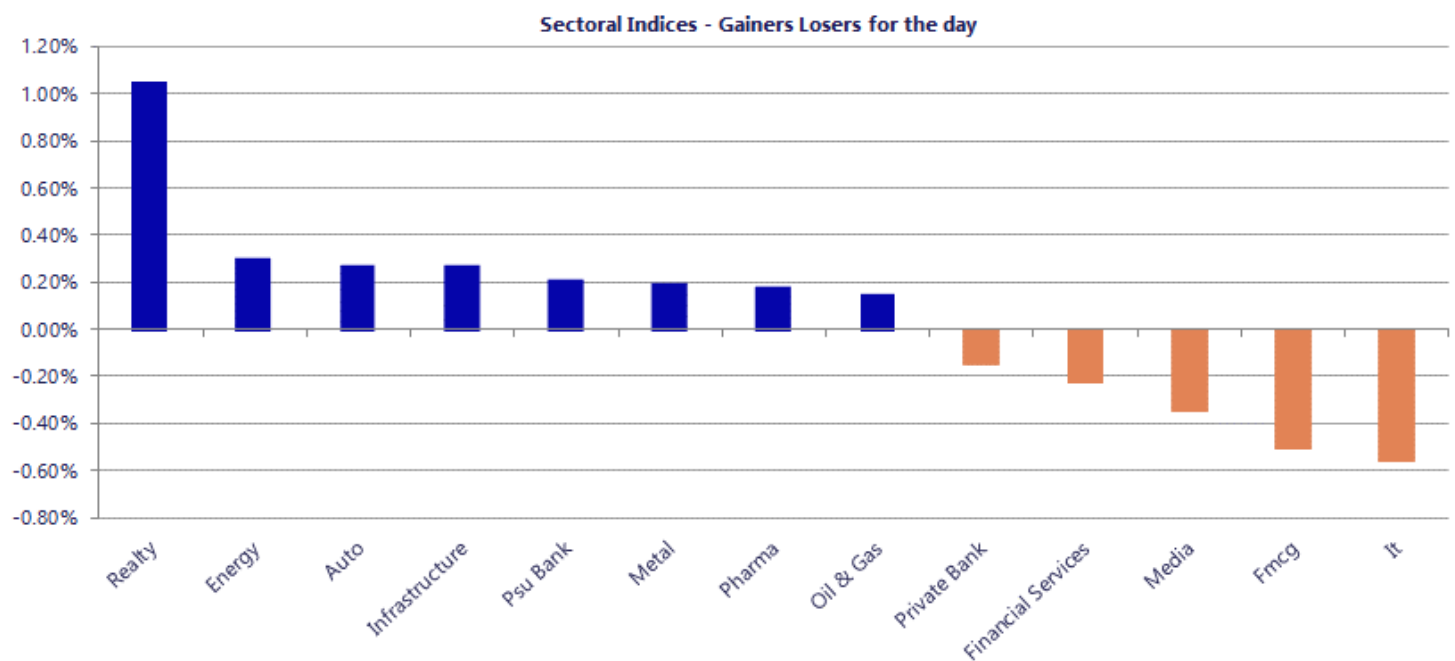


Breakouts - Cross above 200 DMA			
Company Name	LCP	Change %	200 DMA
Century Enka	539.65	18.77	454.38
Exicom Tele-Sys	137.91	14.77	120.16
Ind Motor Parts	1117.4	7.77	1036.79
Polyplex Corp	983.85	7.56	914.69
IRB Infra	22.84	7.08	21.33
Techno Electric	1294.3	6.07	1220.2
Rajshree Sugars	37	5.32	35.13
Sammaan Capital	154.26	4.72	147.31
Avantel	162.16	4.68	154.91
Windsor	293	4.67	279.94
JTL Ind.	69.16	3.83	66.61
Honeywell Autom	34965	3.81	33680.25
ICE Make Refrig	778.95	3.29	754.15
Viviana Power	829.5	3.18	803.9
Euro India Fres	243.79	2.70	237.39
Dr Agarwals	481.1	2.55	469.15
SRG Housing Fin	290.95	2.55	283.71
Amber Enterpris	7537	2.54	7350.14

\* Stocks crossing above its Simple Moving Average (200DMA)

Breakdown - Cross below 200 DMA			
Company Name	LCP	Change %	200 DMA
Synergy Green I	507.25	-4.37	530.41
Tatva Chintan	1187.7	-3.92	1236.19
EMA Partners In	88.5	-3.47	91.68
Team India	255.05	-3.41	264.06
Healthcare Glob	627	-2.55	643.41
Megatherm Induc	243	-2.34	248.82
Moschip Tech	201.55	-2.16	206.01
Shiva Texyarn	169.42	-1.81	172.55
Kontor Space	70.55	-1.63	71.72
LIC Housing Fin	537.95	-1.59	546.64
Kabra Jewels	94.25	-1.53	95.71
Edelweiss	109.43	-1.19	110.75
Prozone Intu	51.8	-0.84	52.24
Texmaco Infra	96.68	-0.74	97.4
Ujjivan Small	52.9	-0.68	53.26
Jindal Poly Inv	1006.8	-0.67	1013.59
ORIENTAL AROMAT	305.85	-0.49	307.37
L&T Finance	269.85	-0.48	271.15

\* Stocks crossing below its Simple Moving Average (200DMA)



Nifty 50 Stocks - Summary Details											
Symbol	LTP	Chng	% Chng	Volume (lacs)	Turnover (crs.)	52w High	Diff with 52w H	52w Low	Diff with 52w L	365 days % chng	30 days % chng
NIFTY 50	23654.70	-4.30	-0.02%	3481.68	29930	26373	10.31%	22183	6.64%	-3.75%	-4.67%
ADANIENT	2690.00	-14.80	-0.55%	16.07	438	2803	4.03%	1753	53.45%	20.84%	10.81%
ADANI PORTS	1790.00	17.40	0.98%	16.28	292	1824	1.86%	1291	38.71%	12.29%	29.28%
APOLLOHOSP	8330.00	251.50	3.11%	14.25	1176	8388	0.69%	6697	24.39%	7.57%	19.27%
ASIANPAINT	2597.00	-1.60	-0.06%	10.32	270	2986	13.02%	2115	22.79%	2.10%	12.31%
AXISBANK	1252.00	2.20	0.18%	51.72	649	1418	11.73%	1043	20.10%	-9.12%	4.52%
BAJAJ-AUTO	10650.00	187.50	1.79%	5.23	557	10785	1.25%	7859	35.52%	8.75%	22.59%
BAJAJFINSV	1750.00	-22.00	-1.24%	4.79	84	2195	20.27%	1597	9.58%	-5.48%	-14.10%
BAJFINANCE	908.10	-15.00	-1.62%	97.13	886	1103	17.63%	788	15.26%	-3.28%	-1.27%
BEL	420.10	6.80	1.65%	197.89	834	473	11.27%	359	17.18%	-6.95%	9.69%
BHARTIARTL	1884.00	-20.90	-1.10%	64.18	1217	2175	13.36%	1741	8.24%	1.56%	3.37%
CIPLA	1397.70	-1.80	-0.13%	11.45	161	1673	16.46%	1166	19.90%	13.40%	-5.71%
COALINDIA	457.25	-1.45	-0.32%	74.25	343	491	6.92%	369	24.03%	3.18%	12.80%
DRREDDY	1320.00	-1.90	-0.14%	21.83	289	1380	4.33%	1148	14.94%	8.14%	7.78%
EICHERMOT	6912.00	62.50	0.91%	4.91	339	8230	16.01%	5220	32.43%	-4.54%	27.79%
ETERNAL	241.80	-1.54	-0.63%	216.74	529	368	34.37%	213	13.73%	-6.81%	5.14%
GRASIM	3162.00	190.90	6.43%	44.17	1379	3180	0.57%	2503	26.35%	13.84%	16.81%
HCLTECH	1168.00	-1.80	-0.15%	22.45	263	1780	34.39%	1103	5.85%	-18.96%	-29.30%
HDFCBANK	758.80	-0.70	-0.09%	346.65	2636	1021	25.64%	727	4.42%	-6.52%	-21.24%
HDFCLIFE	615.00	9.90	1.64%	36.25	222	821	25.07%	555	10.79%	0.13%	-19.05%
HINDALCO	1100.00	14.50	1.34%	45.85	504	1111	0.98%	618	77.99%	7.67%	65.91%
HINDUNILVR	2178.40	-30.90	-1.40%	15.82	347	2750	20.79%	2023	7.71%	-5.73%	-7.85%
ICICIBANK	1244.40	7.10	0.57%	143.94	1788	1500	17.04%	1188	4.78%	-10.37%	-13.86%
INDIGO	4400.00	135.40	3.17%	16.56	730	6233	29.40%	3895	12.96%	-6.25%	-19.44%
INFY	1178.20	-15.50	-1.30%	100.21	1188	1728	31.82%	1089	8.19%	-10.28%	-24.88%
ITC	307.65	0.10	0.03%	218.61	673	444	30.74%	287	7.20%	-0.65%	-28.95%
JIOFIN	235.80	1.13	0.48%	120.84	286	339	30.36%	223	5.60%	0.45%	-14.05%
JSWSTEEL	1280.60	-2.60	-0.20%	53.40	684	1314	2.54%	962	33.10%	0.08%	27.94%
KOTAKBANK	381.50	-1.70	-0.44%	101.34	387	453	15.82%	346	10.42%	-0.17%	-7.91%
LT	3931.00	20.30	0.52%	16.25	640	4440	11.46%	3288	19.55%	-3.54%	9.53%
M&M	3099.00	-23.20	-0.74%	18.77	583	3840	19.29%	2896	7.01%	-4.57%	0.27%
MARUTI	12995.00	-8.00	-0.06%	2.13	278	17370	25.19%	12016	8.15%	-3.46%	3.01%
MAXHEALTH	1093.15	17.45	1.62%	27.64	303	1314	16.83%	903	21.06%	7.15%	-4.29%
NESTLEIND	1407.00	-13.10	-0.92%	20.49	289	1498	6.08%	1085	29.71%	1.96%	17.61%
NTPC	388.55	-3.90	-0.99%	105.97	414	414	6.24%	316	23.13%	-1.93%	12.25%
ONGC	295.80	-2.50	-0.84%	140.85	417	308	3.80%	229	29.39%	4.49%	18.95%
POWERGRID	299.10	-0.80	-0.27%	103.53	312	325	7.96%	250	19.64%	-6.34%	1.00%
RELIANCE	1349.00	-10.70	-0.79%	171.50	2320	1612	16.30%	1290	4.57%	-0.32%	-5.61%
SBILIFE	1857.50	-6.70	-0.36%	3.83	71	2132	12.88%	1720	7.99%	-2.83%	5.31%
SBIN	950.00	-0.90	-0.09%	117.55	1120	1235	23.06%	779	21.94%	-14.56%	20.70%
SHRIRAMFIN	915.70	-7.75	-0.84%	45.98	423	1108	17.36%	567	61.64%	-12.40%	39.16%
SUNPHARMA	1887.00	6.70	0.36%	16.06	303	1917	1.54%	1548	21.90%	13.32%	8.96%
TATA CONSUM	1195.20	-13.50	-1.12%	14.44	173	1283	6.82%	1007	18.67%	4.66%	4.95%
TATASTEEL	208.64	1.63	0.79%	243.86	509	224	7.02%	150	39.28%	-1.59%	29.08%
TCS	2325.40	-2.00	-0.09%	32.99	767	3558	34.64%	2206	5.39%	-10.92%	-34.05%
TECHM	1419.80	-19.20	-1.33%	9.99	143	1854	23.42%	1304	8.87%	-5.40%	-11.16%
TITAN	4085.00	-21.40	-0.52%	8.63	353	4605	11.29%	3303	23.67%	-8.81%	14.09%
TMPV	363.20	1.95	0.54%	108.34	392	744	51.18%	294	23.41%	2.05%	-50.03%
TRENT	4172.90	73.00	1.78%	7.48	310	6261	33.35%	3276	27.40%	-4.96%	-23.34%
ULTRACEMCO	11505.00	96.00	0.84%	2.45	281	13110	12.24%	10325	11.43%	-4.44%	-1.38%
WIPRO	199.51	2.39	1.21%	189.80	378	273	26.95%	187	6.98%	-2.68%	-20.49%

## Disclaimer / Disclosures

### ANALYST CERTIFICATION

I, Mrs. Vaishali Parekh B.com, Research Analyst, author and the name subscribed to this report, hereby certify that all of the views expressed in this research report accurately reflect our views about the subject issuer(s) or securities. We also certify that no part of our compensation was, is, or will be directly or indirectly related to the specific recommendation(s) or view(s) in this report.

Terms & conditions and other disclosures:

Prabhudas Lilladher Pvt. Ltd, Mumbai, India (hereinafter referred to as "PL") is engaged in the business of Stock Broking, Portfolio Manager, Depository Participant and distribution for third party financial products. PL is a subsidiary of Prabhudas Lilladher Advisory Services Pvt Ltd. which has its various subsidiaries engaged in business of commodity broking, investment banking, financial services (margin funding) and distribution of third party financial/other products, details in respect of which are available at [www.plindia.com](http://www.plindia.com)

This document has been prepared by the Research Division of PL and is meant for use by the recipient only as information and is not for circulation. This document is not to be reported or copied or made available to others without prior permission of PL. It should not be considered or taken as an offer to sell or a solicitation to buy or sell any security.

The information contained in this report has been obtained from sources that are considered to be reliable. However, PL has not independently verified the accuracy or completeness of the same. Neither PL nor any of its affiliates, its directors or its employees accepts any responsibility of whatsoever nature for the information, statements and opinion given, made available or expressed herein or for any omission therein.

Recipients of this report should be aware that past performance is not necessarily a guide to future performance and value of investments can go down as well. The suitability or otherwise of any investments will depend upon the recipient's particular circumstances and, in case of doubt, advice should be sought from an independent expert/advisor.

Either PL or its affiliates or its directors or its employees or its representatives or its clients or their relatives may have position(s), make market, act as principal or engage in transactions of securities of companies referred to in this report and they may have used the research material prior to publication.

PL may from time to time solicit or perform investment banking or other services for any company mentioned in this document.

PL is registered as Research Analyst under Securities and Exchange Board of India (Research Analysts) Regulations, 2014 PL submits that no material disciplinary action has been taken on us by any Regulatory Authority impacting Equity Research Analysis activities.

PL or its research analysts or its associates or his relatives do not have any financial interest in the subject company.

PL or its research analysts or its associates or his relatives do not have actual/beneficial ownership of one per cent or more securities of the subject company at the end of the month immediately preceding the date of publication of the research report.

PL or its research analysts or its associates or his relatives do not have any material conflict of interest at the time of publication of the research report.

PL or its associates might have received compensation from the subject company in the past twelve months.

PL or its associates might have managed or co-managed public offering of securities for the subject company in the past twelve months or mandated by the subject company for any other assignment in the past twelve months.

PL or its associates might have received any compensation for investment banking or merchant banking or brokerage services from the subject company in the past twelve months.

PL or its associates might have received any compensation for products or services other than investment banking or merchant banking or brokerage services from the subject company in the past twelve months PL or its associates might have received any compensation or other benefits from the subject company or third party in connection with the research report.

PL encourages independence in research report preparation and strives to minimize conflict in preparation of research report. PL or its analysts did not receive any compensation or other benefits from the subject Company or third party in connection with the preparation of the research report. PL or its Research Analysts do not have any material conflict of interest at the time of publication of this report.

It is confirmed that Mrs. Vaishali Parekh B.com, Research Analyst of this report has not received any compensation from the companies mentioned in the report in the preceding twelve months compensation of our Research Analysts is not based on any specific merchant banking, investment banking or brokerage service transactions.

The Research analysts for this report certifies that all of the views expressed in this report accurately reflect his or her personal views about the subject company or companies and its or their securities, and no part of his or her compensation was, is or will be, directly or indirectly related to specific recommendations or views expressed in this report.

The research analysts for this report has not served as an officer, director or employee of the subject company PL or its research analysts have not engaged in market making activity for the subject company

Our sales people, traders, and other professionals or affiliates may provide oral or written market commentary or trading strategies to our clients that reflect opinions that are contrary to the opinions expressed herein, and our proprietary trading and investing businesses may make investment decisions that are inconsistent with the recommendations expressed herein. In reviewing these materials, you should be aware that any or all of the foregoing, among other things, may give rise to real or potential conflicts of interest.

PL and its associates, their directors and employees may (a) from time to time, have a long or short position in, and buy or sell the securities of the subject company or (b) be engaged in any other transaction involving such securities and earn brokerage or other compensation or act as a market maker in the financial instruments of the subject company or act as an advisor or lender/borrower to the subject company or may have any other potential conflict of interests with respect to any recommendation and other related information and opinions.

**Regd. Office:** 3<sup>rd</sup> Floor, Sadhana House, 570, P. B. Marg, Behind Mahindra Tower, Worli, Mumbai - 400 018, India.