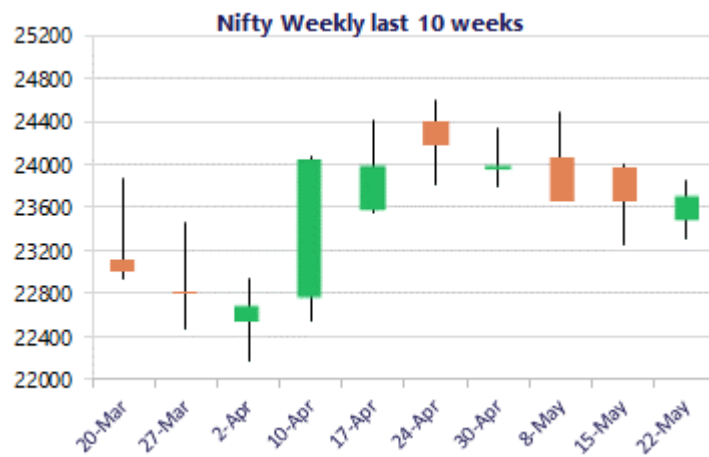
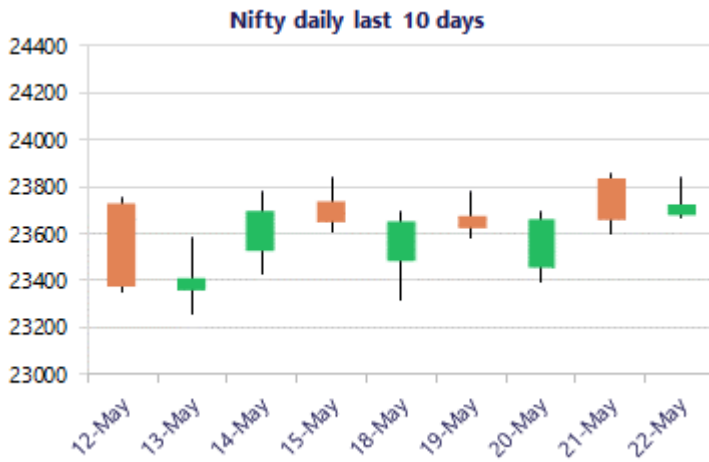


* Sensex 75415.35 + 231.99

* Nifty 23719.30 + 64.60

* Bank Nifty 54055.35 + 615.95



Market Preview

Nifty ends above 23700 zone

Nifty amid some volatility witnessed an optimistic closing above the 23700 zone to improve the bias to some extent expecting for further follow through in the coming sessions. BankNifty indicated a decent close just above the 54000 level to improve the bias and can anticipate for further rise in the coming sessions. The market breadth was however, flat with the advance decline indicating a neutral ratio at close.

Market Forecast

Nifty daily range 23500 - 24000

Nifty witnessed slight volatility during the intraday session but managed to close above the 23700 zone after a long time with sentiment visibly easing out to some extent and can anticipate for further upward move in the coming sessions. The index would target to achieve the 50EMA level at 24000 zone in the coming sessions and further ahead the 24300 band would be the crucial hurdle which needs to be breached decisively to establish conviction. On the downside, the index would continue to have the important support at 23200 zone which needs to be sustained. BankNifty indicated an optimistic move during the session which was missing for a long time and recovering from the 53500 zone closed the session just above the 54000 zone with some of the frontline banking stocks like ICICI Bank and Axis Bank indicating improvement in the bias expecting for further rise in the coming sessions. The index would have the important 50EMA level at 55300 zone which needs to be breached decisively and thereafter, 56400 level above which, it can establish conviction for further upward move in the coming days.

The support for the day is seen at 23500 levels, while the resistance is seen at 24000 levels. BankNifty would have the daily range of 53500-55000 levels.

*Blue candle → Close rate > Open rate * Red candle → Close rate < Open rate

Sensex	Period	Closing	% Chng	Trend	Reversal	2 Sup	1 Sup	Pivot	1 Res	2 Res
Nifty	Daily	23719.30	0.27%	3	23648.75	23577	23648	23742	23813	23907
	Weekly	23719.30	0.32%	7	23850.45	23089	23404	23632	23947	24175
	Monthly	23997.55	7.46%	-4	26009.10	21175	22586	23594	25005	26013
Bank Nifty	Daily	54055.35	1.15%	1	53455.10	53188	53622	53917	54351	54647
	Weekly	54055.35	0.64%	-2	54803.25	52324	53189	53649	54515	54975
	Monthly	54863.35	9.13%	-2	62653.00	46590	50727	54092	58228	61593
Sensex	Daily	75415.35	0.31%	3	75202.20	74905	75160	75486	75741	76066
	Weekly	75415.35	0.24%	-1	76142.60	73415	74415	75180	76181	76946
	Monthly	76913.50	6.90%	-4	83783.80	68121	72517	75942	80338	83763

Gainers - Losers (Nifty 500 Stocks)
Gainers

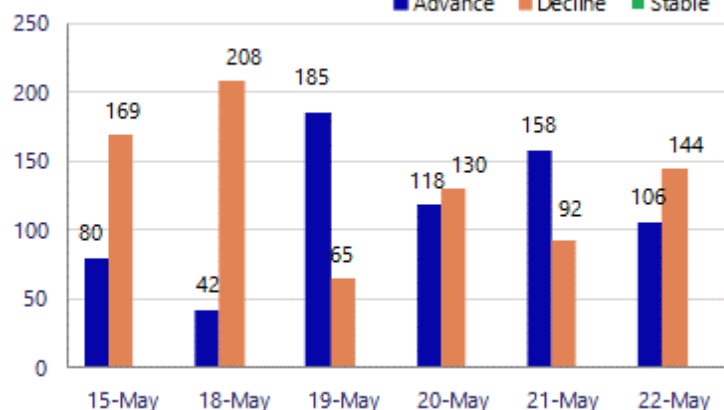
Company Name	Last Price	% Gain	Volume
Astral Ltd	1541.7	4.17%	1481.8
3M India	33,315.00	3.46%	32500
Capri Global	190.65	2.85%	185.37
Dalmia Bharat	1,795.60	2.73%	1786
ACME Solar	290.20	2.67%	282.95
Concord Biotech	1,153.30	2.67%	1129
Axis Bank	1,285.40	2.56%	1254.1

Losers

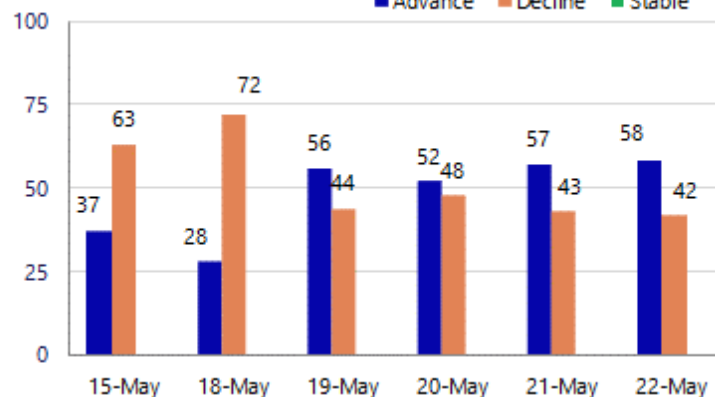
Company Name	Last Price	% Loss	Volume
Engineers India	216.00	-8.94%	220.95
Central Bank	31.27	-7.81%	32.3
Max Healthcare	1,023.25	-6.22%	1068.25
Sun TV Network	486.70	-6.18%	523
Glenmark	2,259.10	-5.60%	2390
Aurobindo Pharm	1463.5	-5.38%	1520
LT Technology	3419.3	-4.68%	3565

Nifty Smallcap-250 stocks

■ Advance ■ Decline ■ Stable


Nifty Midcap-100 stocks

■ Advance ■ Decline ■ Stable



Nifty Daily chart with RSI indicator



BankNifty Daily chart with RSI indicator

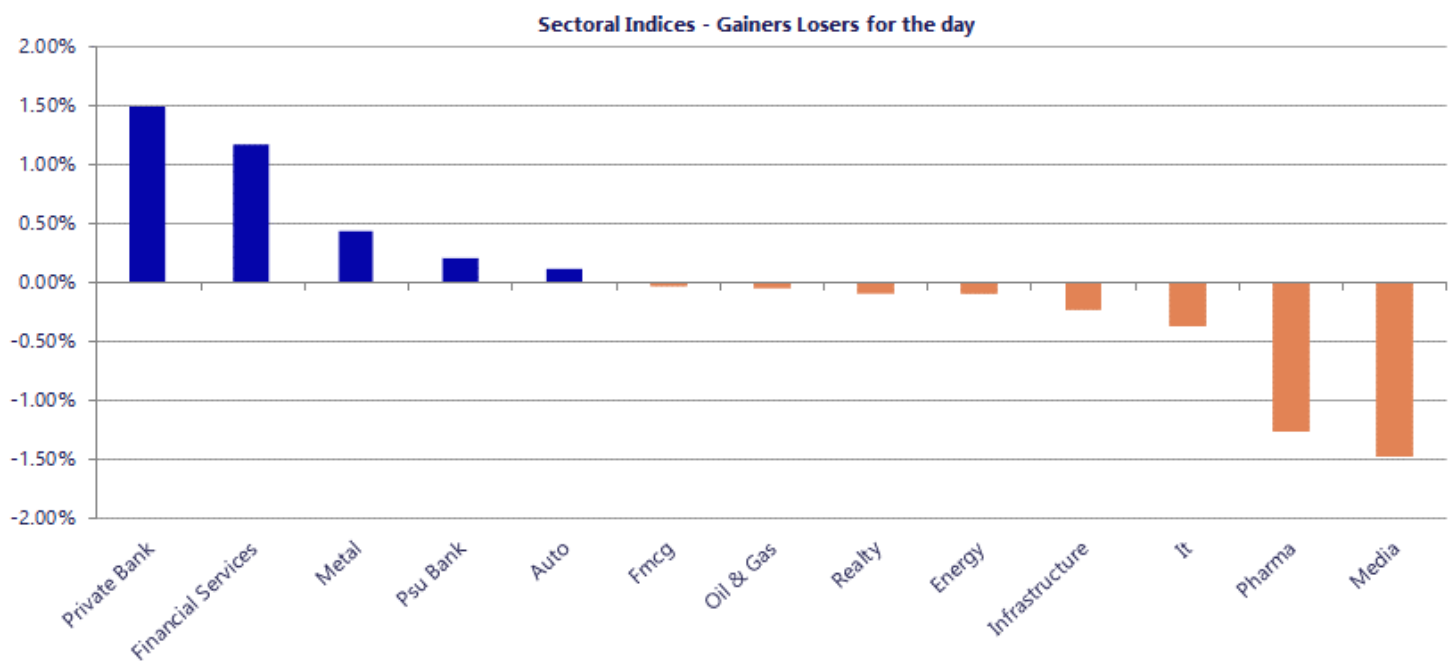


Breakouts - Cross above 200 DMA			
Company Name	LCP	Change %	200 DMA
Kontor Space	84	17.25	71.64
Kabra Jewels	109	14.00	95.61
OCCL	116.14	7.66	107.88
GOCL Corp	329.9	6.22	310.59
Tembo Global	634.95	5.77	600.3
Minda Corp	577.8	5.32	548.63
Sheela Foam	636.6	5.02	606.15
GKW	1765	4.97	1681.37
TVS Supply	121.57	4.66	116.16
Astral Ltd	1545	3.79	1488.57
Industrial Inv	169.25	3.69	163.23
Max Financial	1685.6	2.85	1638.9
Manali Petro	62.73	2.79	61.03
Atlanta	42.9	2.53	41.84
FM	19910	2.23	19474.9
Mukta Arts	62.89	1.98	61.67
Healthcare Glob	655	1.75	643.71
Plastiblends	169.41	1.75	166.49

* Stocks crossing above its Simple Moving Average (200DMA)

Breakdown - Cross below 200 DMA			
Company Name	LCP	Change %	200 DMA
Electrotherm	773.85	-7.91	840.28
Ganesh Ecosph	946	-7.53	1023.01
Max Healthcare	1023.5	-6.09	1089.83
Flair Writing	296.5	-5.03	312.19
Expleo Solution	902.5	-4.26	942.68
Archidply Decor	75.01	-4.05	78.18
DUGLOBAL	36.35	-3.68	37.74
Metro	1068.5	-3.51	1107.39
Ganesh Green	337.7	-3.42	349.67
GMRP&UI	108.17	-3.28	111.84
Bluspring Ent	67.3	-2.89	69.3
Rossell India	53.79	-2.77	55.32
Euro India Fres	231.21	-2.62	237.43
PSP Projects	761.65	-2.59	781.91
PRO FX Tech	82	-2.59	84.18
Prakash Ind	141.34	-2.46	144.91
Eldeco Housing	821	-2.41	841.31
Aristo Bio-Tech	115.55	-2.07	117.99

* Stocks crossing below its Simple Moving Average (200DMA)



Nifty 50 Stocks - Summary Details											
Symbol	LTP	Chng	% Chng	Volume (lacs)	Turnover (crs.)	52w High	Diff with 52w H	52w Low	Diff with 52w L	365 days % chng	30 days % chng
NIFTY 50	23719.30	64.60	0.27%	3360.24	24989	26373	10.06%	22183	6.93%	-2.70%	-3.62%
ADANIENT	2719.10	21.50	0.80%	10.95	298	2803	3.00%	1753	55.11%	20.27%	12.59%
ADANIPTS	1785.00	-8.30	-0.46%	14.87	266	1824	2.13%	1291	38.32%	12.36%	30.16%
APOLLOHOSP	8350.00	41.50	0.50%	5.65	472	8441	1.07%	6697	24.69%	8.98%	20.07%
ASIANPAINT	2636.70	37.90	1.46%	15.56	412	2986	11.69%	2115	24.67%	2.88%	14.68%
AXISBANK	1287.00	33.70	2.69%	50.17	642	1418	9.26%	1043	23.45%	-6.71%	8.29%
BAJAJ-AUTO	10566.00	-101.00	-0.95%	2.08	220	10785	2.03%	7859	34.45%	10.04%	20.98%
BAJAJFINSV	1771.00	18.80	1.07%	3.92	69	2195	19.32%	1597	10.90%	-3.90%	-11.49%
BAJFINANCE	916.55	8.90	0.98%	48.11	442	1103	16.87%	788	16.33%	-1.95%	0.29%
BEL	416.50	-3.90	-0.93%	91.71	383	473	12.03%	361	15.31%	-7.18%	8.63%
BHARTIARTL	1872.70	-12.60	-0.67%	50.99	958	2175	13.88%	1741	7.60%	2.39%	2.26%
CIPLA	1392.90	-9.00	-0.64%	9.17	128	1673	16.74%	1166	19.49%	12.67%	-5.15%
COALINDIA	456.50	-3.70	-0.80%	92.01	421	491	7.07%	369	23.83%	2.78%	14.45%
DRREDDY	1310.00	-8.50	-0.64%	20.02	263	1380	5.05%	1148	14.07%	7.64%	7.18%
EICHERMOT	6985.00	93.00	1.35%	5.13	358	8230	15.13%	5220	33.83%	-3.39%	29.66%
ETERNAL	242.80	0.75	0.31%	235.37	572	368	34.10%	213	14.21%	-7.68%	6.02%
GRASIM	3160.00	5.50	0.17%	9.06	287	3188	0.87%	2503	26.27%	13.81%	18.15%
HCLTECH	1167.00	-1.20	-0.10%	20.45	238	1780	34.44%	1103	5.76%	-9.20%	-28.54%
HDFCBANK	769.00	9.85	1.30%	255.99	1967	1021	24.64%	727	5.83%	-3.86%	-19.89%
HDFCLIFE	615.00	0.65	0.11%	34.82	215	821	25.07%	555	10.79%	1.81%	-18.63%
HINDALCO	1110.10	10.80	0.98%	41.36	456	1115	0.44%	618	79.63%	6.75%	70.90%
HINDUNILVR	2205.00	26.00	1.19%	13.83	305	2750	19.82%	2023	9.02%	-6.91%	-5.39%
ICICIBANK	1267.20	24.40	1.96%	115.96	1466	1500	15.52%	1188	6.70%	-7.34%	-12.13%
INDIGO	4432.00	29.00	0.66%	6.75	299	6233	28.89%	3895	13.78%	-4.50%	-19.46%
INFY	1175.00	-6.20	-0.52%	88.02	1038	1728	32.00%	1089	7.90%	-7.38%	-24.07%
ITC	302.05	-6.00	-1.95%	307.46	934	444	32.00%	287	5.24%	-1.13%	-29.11%
JIOFIN	238.89	3.11	1.32%	135.16	323	339	29.45%	223	6.98%	0.16%	-12.99%
JSWSTEEL	1287.50	6.20	0.48%	5.89	76	1314	2.02%	962	33.81%	1.91%	28.03%
KOTAKBANK	384.60	3.75	0.98%	103.47	398	453	15.14%	346	11.32%	2.06%	-6.91%
LT	3933.00	42.50	1.09%	13.30	524	4440	11.42%	3288	19.61%	-2.19%	10.75%
M&M	3085.00	-14.00	-0.45%	24.07	746	3840	19.66%	2896	6.53%	-2.05%	2.62%
MARUTI	12995.00	-15.00	-0.12%	3.88	506	17370	25.19%	12016	8.15%	-2.56%	4.42%
MAXHEALTH	1023.05	-68.05	-6.24%	117.10	1205	1314	22.16%	903	13.29%	1.76%	-10.90%
NESTLEIND	1423.80	17.30	1.23%	13.06	185	1498	4.96%	1085	31.26%	2.01%	20.57%
NTPC	389.00	0.20	0.05%	117.55	457	414	6.13%	316	23.28%	-4.05%	13.94%
ONGC	289.95	-5.90	-1.99%	115.62	337	308	5.71%	229	26.83%	2.22%	19.98%
POWERGRID	294.15	-5.40	-1.80%	151.05	446	325	9.48%	250	17.66%	-8.01%	1.12%
RELIANCE	1358.00	8.40	0.62%	71.05	964	1612	15.75%	1290	5.27%	-0.30%	-3.65%
SBILIFE	1860.90	1.00	0.05%	9.34	176	2132	12.72%	1720	8.19%	-1.27%	5.78%
SBIN	949.60	-1.30	-0.14%	78.06	743	1235	23.09%	779	21.88%	-13.93%	20.93%
SHRIRAMFIN	942.00	27.25	2.98%	54.15	506	1108	14.98%	567	66.28%	-9.82%	44.98%
SUNPHARMA	1840.00	-51.30	-2.71%	36.10	671	1917	4.00%	1548	18.86%	10.19%	7.06%
TATACONSUM	1192.00	-2.90	-0.24%	18.08	216	1283	7.07%	1007	18.35%	1.14%	5.80%
TATASTEEL	209.35	0.77	0.37%	220.17	461	224	6.71%	150	39.75%	-1.73%	29.80%
TCS	2317.90	-9.30	-0.40%	26.17	608	3545	34.61%	2206	5.05%	-8.69%	-33.34%
TECHM	1424.20	4.20	0.30%	6.54	93	1854	23.18%	1304	9.21%	-2.63%	-9.03%
TITAN	4099.00	15.90	0.39%	7.68	314	4605	10.99%	3303	24.10%	-7.98%	15.76%
TMPV	363.95	2.60	0.72%	69.35	252	744	51.08%	294	23.67%	0.58%	-49.27%
TRENT	4303.00	132.60	3.18%	10.88	464	6261	31.27%	3276	31.37%	-2.97%	-19.45%
ULTRACEMCO	11588.00	114.00	0.99%	3.40	395	13110	11.61%	10325	12.23%	-4.96%	-0.79%
WIPRO	202.97	3.23	1.62%	399.72	813	273	25.68%	187	8.83%	-0.50%	-17.47%

Disclaimer / Disclosures

ANALYST CERTIFICATION

I, Mrs. Vaishali Parekh B.com, Research Analyst, author and the name subscribed to this report, hereby certify that all of the views expressed in this research report accurately reflect our views about the subject issuer(s) or securities. We also certify that no part of our compensation was, is, or will be directly or indirectly related to the specific recommendation(s) or view(s) in this report.

Terms & conditions and other disclosures:

Prabhudas Lilladher Pvt. Ltd, Mumbai, India (hereinafter referred to as "PL") is engaged in the business of Stock Broking, Portfolio Manager, Depository Participant and distribution for third party financial products. PL is a subsidiary of Prabhudas Lilladher Advisory Services Pvt Ltd. which has its various subsidiaries engaged in business of commodity broking, investment banking, financial services (margin funding) and distribution of third party financial/other products, details in respect of which are available at www.plindia.com

This document has been prepared by the Research Division of PL and is meant for use by the recipient only as information and is not for circulation. This document is not to be reported or copied or made available to others without prior permission of PL. It should not be considered or taken as an offer to sell or a solicitation to buy or sell any security.

The information contained in this report has been obtained from sources that are considered to be reliable. However, PL has not independently verified the accuracy or completeness of the same. Neither PL nor any of its affiliates, its directors or its employees accepts any responsibility of whatsoever nature for the information, statements and opinion given, made available or expressed herein or for any omission therein.

Recipients of this report should be aware that past performance is not necessarily a guide to future performance and value of investments can go down as well. The suitability or otherwise of any investments will depend upon the recipient's particular circumstances and, in case of doubt, advice should be sought from an independent expert/advisor.

Either PL or its affiliates or its directors or its employees or its representatives or its clients or their relatives may have position(s), make market, act as principal or engage in transactions of securities of companies referred to in this report and they may have used the research material prior to publication.

PL may from time to time solicit or perform investment banking or other services for any company mentioned in this document.

PL is registered as Research Analyst under Securities and Exchange Board of India (Research Analysts) Regulations, 2014 PL submits that no material disciplinary action has been taken on us by any Regulatory Authority impacting Equity Research Analysis activities.

PL or its research analysts or its associates or his relatives do not have any financial interest in the subject company.

PL or its research analysts or its associates or his relatives do not have actual/beneficial ownership of one per cent or more securities of the subject company at the end of the month immediately preceding the date of publication of the research report.

PL or its research analysts or its associates or his relatives do not have any material conflict of interest at the time of publication of the research report.

PL or its associates might have received compensation from the subject company in the past twelve months.

PL or its associates might have managed or co-managed public offering of securities for the subject company in the past twelve months or mandated by the subject company for any other assignment in the past twelve months.

PL or its associates might have received any compensation for investment banking or merchant banking or brokerage services from the subject company in the past twelve months.

PL or its associates might have received any compensation for products or services other than investment banking or merchant banking or brokerage services from the subject company in the past twelve months PL or its associates might have received any compensation or other benefits from the subject company or third party in connection with the research report.

PL encourages independence in research report preparation and strives to minimize conflict in preparation of research report. PL or its analysts did not receive any compensation or other benefits from the subject Company or third party in connection with the preparation of the research report. PL or its Research Analysts do not have any material conflict of interest at the time of publication of this report.

It is confirmed that Mrs. Vaishali Parekh B.com, Research Analyst of this report has not received any compensation from the companies mentioned in the report in the preceding twelve months compensation of our Research Analysts is not based on any specific merchant banking, investment banking or brokerage service transactions.

The Research analysts for this report certifies that all of the views expressed in this report accurately reflect his or her personal views about the subject company or companies and its or their securities, and no part of his or her compensation was, is or will be, directly or indirectly related to specific recommendations or views expressed in this report.

The research analysts for this report has not served as an officer, director or employee of the subject company PL or its research analysts have not engaged in market making activity for the subject company

Our sales people, traders, and other professionals or affiliates may provide oral or written market commentary or trading strategies to our clients that reflect opinions that are contrary to the opinions expressed herein, and our proprietary trading and investing businesses may make investment decisions that are inconsistent with the recommendations expressed herein. In reviewing these materials, you should be aware that any or all of the foregoing, among other things, may give rise to real or potential conflicts of interest.

PL and its associates, their directors and employees may (a) from time to time, have a long or short position in, and buy or sell the securities of the subject company or (b) be engaged in any other transaction involving such securities and earn brokerage or other compensation or act as a market maker in the financial instruments of the subject company or act as an advisor or lender/borrower to the subject company or may have any other potential conflict of interests with respect to any recommendation and other related information and opinions.

Regd. Office: 3rd Floor, Sadhana House, 570, P. B. Marg, Behind Mahindra Tower, Worli, Mumbai - 400 018, India.