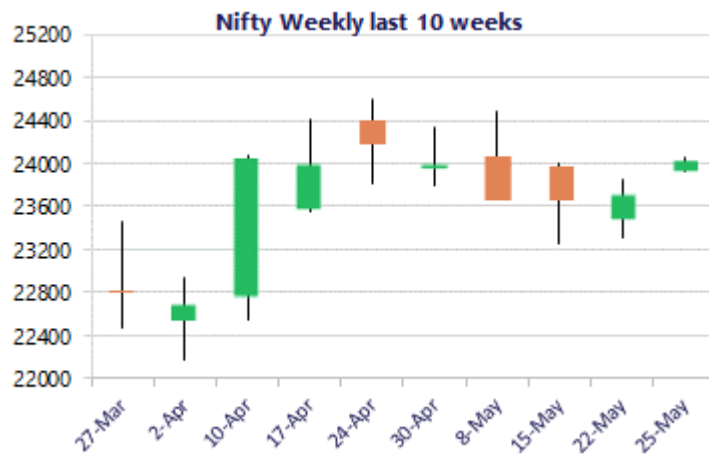
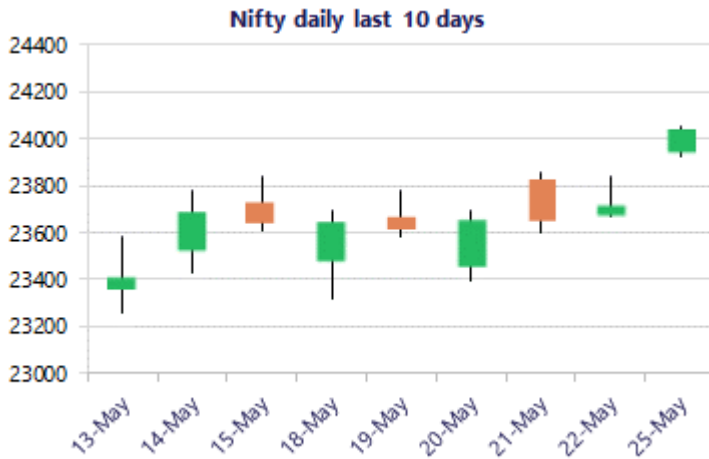


* Sensex 76488.96 + 1073.61

* Nifty 24031.70 + 312.40

* Bank Nifty 55293.65 + 1238.30



*Blue candle → Close rate > Open rate * Red candle → Close rate < Open rate

Market Preview

Nifty ends above 24000 zone

Nifty after a long time, witnessed a strong intraday session closing above the 24000 zone with active participation visible from the broader markets as well to improve the bias and sentiment. BankNifty indicated a strong session with bias getting much better and closing above the 55000 zone has improved the sentiment. The market breadth was strong with the advance decline indicating a ratio of 5:2 at close.

Market Forecast

Nifty daily range 23800 - 24300

Nifty witnessed a strong breakout above the resistance hurdle of 23800 zone and closed above the 24000 level with the sentiment eased out significantly and can anticipate for further rise in the coming days having the important hurdle of 24300 zone to be targeted. The index witnessed an optimistic move during the session and would have the 23800 zone as the near-term support which needs to be sustained to maintain the overall bias intact.

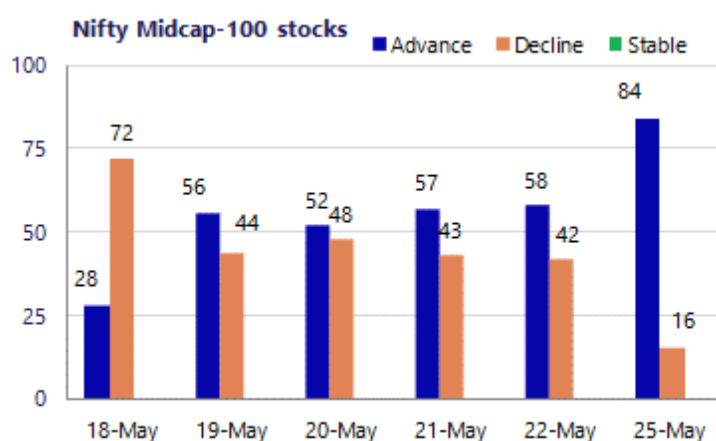
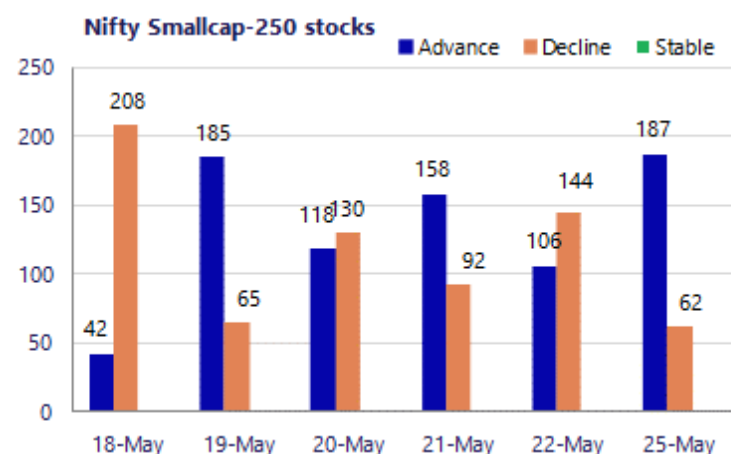
BankNifty indicated a strong bullish candle formation on the daily chart breaching above the 55000 zone with bias improving considerable anticipating for further rise in the coming days. The index would have the near-term target of 57000 zone of the 200 period MA with most of the frontline banking stocks getting into momentum improving their bias. On the downside, the 53500 zone shall be maintained as the important support which needs to be sustained as of now.

The support for the day is seen at 23800 levels, while the resistance is seen at 24300 levels. BankNifty would have the daily range of 54300-56300 levels.

Sensex	Period	Closing	% Chng	Trend	Reversal	2 Sup	1 Sup	Pivot	1 Res	2 Res
Nifty	Daily	24031.70	1.32%	4	23685.80	23871	23952	24003	24083	24135
	Weekly	23719.30	0.32%	7	23850.45	23089	23404	23632	23947	24175
	Monthly	23997.55	7.46%	-4	26009.10	21175	22586	23594	25005	26013
Bank Nifty	Daily	55293.65	2.29%	2	53473.35	54282	54788	55097	55602	55911
	Weekly	54055.35	0.64%	-2	54803.25	52324	53189	53649	54515	54975
	Monthly	54863.35	9.13%	-2	62653.00	46590	50727	54092	58228	61593
Sensex	Daily	76488.96	1.42%	4	75207.65	75920	76204	76382	76666	76844
	Weekly	75415.35	0.24%	-1	76142.60	73415	74415	75180	76181	76946
	Monthly	76913.50	6.90%	-4	83783.80	68121	72517	75942	80338	83763

Gainers - Losers (Nifty 500 Stocks)

Gainers				Losers			
Company Name	Last Price	% Gain	Volume	Company Name	Last Price	% Loss	Volume
Blue Jet	481.4	9.15%	443	Colgate	2,097.00	-2.78%	2185.7
Amara Raja	883.40	7.65%	828.55	Belrise Ind	210.64	-2.64%	216.01
Adani Power	233.38	6.41%	221	Apar Ind	12,480.00	-2.36%	12832
Aditya Infotech	2,556.10	5.80%	2449.8	Bikaji Foods	640.50	-1.94%	652.2
Adani Enterpris	2,849.70	4.87%	2739.8	DCM Shriram	1,090.30	-1.94%	1121.9
Apollo Tyres	388.35	4.45%	376	Divis Labs	6756.5	-1.89%	6750
Bank of India	146.01	4.35%	141.6	Concord Biotech	1131.9	-1.86%	1176.4



Nifty Daily chart with RSI indicator



BankNifty Daily chart with RSI indicator



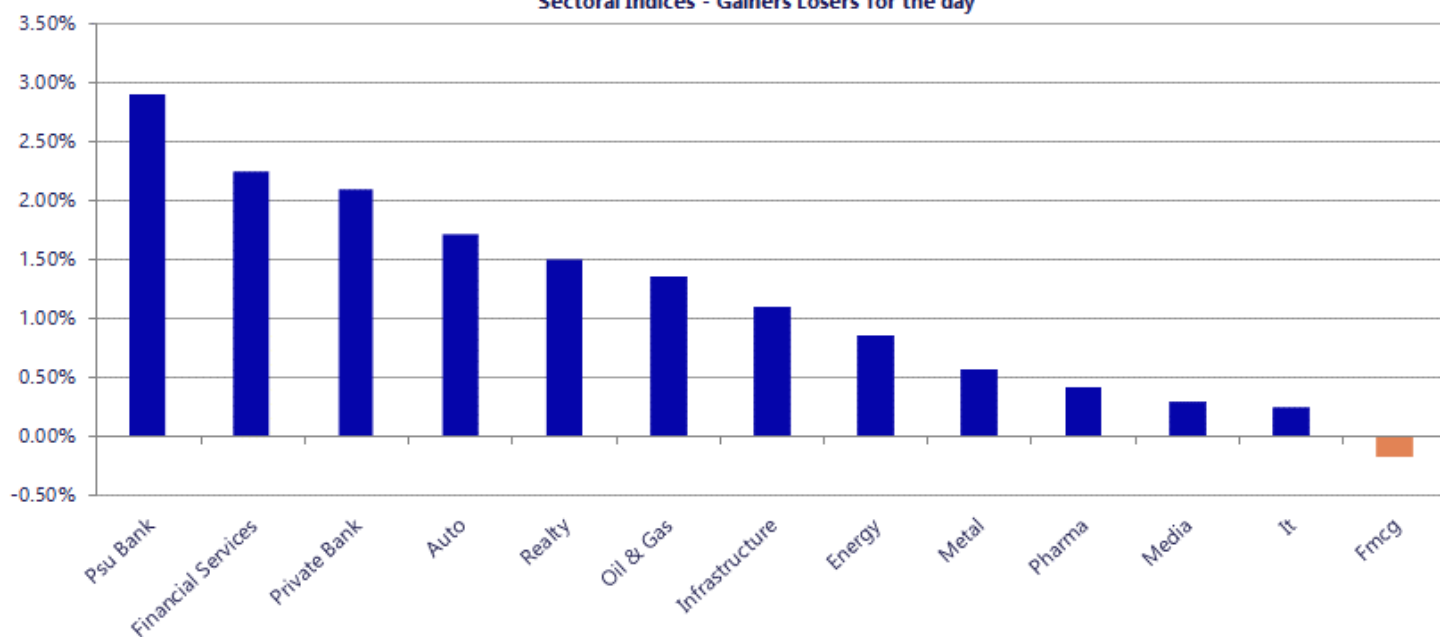
Breakouts - Cross above 200 DMA			
Company Name	LCP	Change %	200 DMA
Fonebox Retail	99.25	14.79	86.46
Chaman Lal Seti	298	11.54	267.18
Srivari Spices	148.1	10.83	133.63
Sundaram Brake	757	10.72	683.73
Health X Plat	322.45	9.88	293.46
Aptech	112	8.95	102.8
Shriram Propert	90.9	7.68	84.42
Solex Energy	1396.5	6.56	1310.57
Eicher Motors	7414	6.11	6987.39
Guj Themis	389.35	5.25	369.93
Ganesh Green	364.95	4.64	348.76
Revathi Equipme	799.45	4.49	765.08
Greenlam Ind	250.43	4.22	240.3
Hariom Pipe	413.2	4.16	396.69
HF	535.95	4.08	514.96
Bank of India	146.01	3.90	140.53
TITAGARH	832.1	3.47	804.22
KIOCL	397.55	3.35	384.68

* Stocks crossing above its Simple Moving Average (200DMA)

Breakdown - Cross below 200 DMA			
Company Name	LCP	Change %	200 DMA
Precision Camsh	154.24	-6.57	165.08
Kolte-Patil	381.95	-2.38	391.28
Vital Chemtech	54.52	-1.89	55.57
UTI NIF10GETF	25.56	-1.73	26.01
Religare Enterp	236.6	-1.51	240.23
Can Fin Homes	838.4	-1.25	849.01
Manali Petro	60.47	-0.85	60.99
Sanofi Consumer	4609.6	-0.74	4643.99
Agarwal Toughen	123.25	-0.65	124.06
IRM Energy	274.5	-0.63	276.25
Electronics Mar	116.77	-0.52	117.38
Prime Sec	279.1	-0.47	280.43
UTI NIF5GETF	63.46	-0.45	63.75
JagsonpalPharma	205.69	-0.35	206.42
Industrial Inv	162.94	-0.20	163.27
Voler Car	212.5	-0.07	212.65
Mindspace REIT	461.66	-0.06	461.95
ABSLLIQUID	999.99	0.00	1000

* Stocks crossing below its Simple Moving Average (200DMA)

Sectoral Indices - Gainers Losers for the day



Nifty 50 Stocks - Summary Details											
Symbol	LTP	Chng	% Chng	Volume (lacs)	Turnover (crs.)	52w High	Diff with 52w H	52w Low	Diff with 52w L	365 days % chng	30 days % chng
NIFTY 50	24031.70	312.40	1.32%	3512.05	27301	26373	8.88%	22183	8.34%	0.56%	-3.31%
ADANIEN	2847.00	129.70	4.77%	32.78	923	2859	0.41%	1753	62.41%	24.45%	15.45%
ADANIPTS	1805.00	18.10	1.01%	15.16	273	1824	1.04%	1291	39.87%	13.87%	29.35%
APOLLOHSP	8415.00	52.50	0.63%	3.65	307	8443	0.33%	6697	25.66%	8.83%	19.12%
ASIANPAINT	2658.00	18.20	0.69%	8.16	218	2986	10.98%	2115	25.67%	6.96%	14.79%
AXISBANK	1311.00	25.60	1.99%	56.71	740	1418	7.57%	1043	25.76%	-4.02%	8.34%
BAJAJ-AUTO	10504.00	-45.50	-0.43%	5.65	596	10785	2.61%	7859	33.66%	9.69%	20.17%
BAJAJFINSV	1810.00	44.00	2.49%	4.57	82	2195	17.54%	1597	13.34%	2.22%	-11.12%
BAJFINANCE	943.95	27.40	2.99%	70.65	662	1103	14.38%	788	19.81%	2.43%	2.12%
BEL	421.80	5.25	1.26%	88.61	372	473	10.91%	361	16.78%	-5.10%	9.90%
BHARTIARTL	1879.00	7.60	0.41%	59.04	1107	2175	13.59%	1741	7.96%	3.55%	2.58%
CIPLA	1413.00	13.80	0.99%	6.69	94	1673	15.54%	1166	21.21%	9.11%	-4.80%
COALINDIA	457.90	1.35	0.30%	84.41	387	491	6.79%	369	24.21%	0.42%	14.05%
DRREDDY	1333.00	25.80	1.97%	46.60	617	1380	3.38%	1148	16.07%	1.21%	8.37%
EICHERMOT	7432.00	450.50	6.45%	13.55	997	8230	9.70%	5220	42.39%	4.51%	37.63%
ETERNAL	247.50	5.55	2.29%	200.66	496	368	32.83%	213	16.42%	-3.62%	4.19%
GRASIM	3172.00	16.70	0.53%	6.20	196	3192	0.64%	2503	26.75%	15.80%	19.28%
HCLTECH	1167.10	3.10	0.27%	14.20	166	1780	34.44%	1103	5.77%	-3.00%	-29.19%
HDFCBANK	787.45	20.65	2.69%	260.44	2041	1021	22.84%	727	8.37%	0.33%	-18.55%
HDFCLIFE	620.00	3.40	0.55%	17.24	107	821	24.46%	555	11.69%	5.41%	-20.55%
HINDALCO	1099.00	-10.20	-0.92%	76.77	839	1120	1.86%	618	77.83%	4.83%	69.05%
HINDUNILVR	2198.00	-5.60	-0.25%	7.81	173	2750	20.07%	2023	8.68%	-5.56%	-6.83%
ICICIBANK	1293.50	29.20	2.31%	138.54	1777	1500	13.77%	1188	8.92%	-2.47%	-10.78%
INDIGO	4498.40	59.80	1.35%	24.93	1117	6233	27.82%	3895	15.49%	-0.55%	-18.52%
INFY	1168.00	-6.50	-0.55%	58.55	687	1728	32.41%	1089	7.25%	1.16%	-25.36%
ITC	304.30	2.60	0.86%	157.33	478	444	31.49%	287	6.03%	0.90%	-30.25%
JIOFIN	242.00	3.81	1.60%	98.12	237	339	28.53%	223	8.37%	-1.52%	-14.11%
JSWSTEEL	1289.00	3.50	0.27%	9.22	119	1314	1.90%	962	33.97%	2.65%	27.81%
KOTAKBANK	393.25	9.10	2.37%	155.71	610	453	13.23%	346	13.82%	6.04%	-6.40%
LT	4035.00	108.40	2.76%	21.00	844	4440	9.12%	3288	22.72%	0.52%	12.09%
M&M	3144.50	63.20	2.05%	24.24	762	3840	18.11%	2896	8.58%	3.49%	4.37%
MARUTI	13188.00	201.00	1.55%	2.77	364	17370	24.08%	12016	9.75%	1.07%	5.90%
MAXHEALTH	1000.60	-22.65	-2.21%	38.47	386	1314	23.87%	903	10.81%	0.12%	-14.99%
NESTLEIND	1417.90	-5.20	-0.37%	8.12	115	1498	5.35%	1085	30.72%	-0.24%	17.45%
NTPC	391.30	2.65	0.68%	104.90	409	414	5.57%	316	24.01%	-2.63%	13.55%
ONGC	284.90	-5.10	-1.76%	128.34	367	308	7.35%	229	24.62%	0.04%	16.65%
POWERGRID	295.45	1.15	0.39%	58.96	174	325	9.08%	250	18.18%	-6.62%	-0.89%
RELIANCE	1366.40	11.90	0.88%	67.50	920	1612	15.23%	1290	5.92%	2.91%	-4.23%
SBILIFE	1903.00	32.30	1.73%	4.45	84	2132	10.74%	1720	10.64%	7.58%	5.80%
SBIN	972.30	23.10	2.43%	109.34	1053	1235	21.25%	780	24.61%	-11.70%	23.00%
SHRIRAMFIN	963.00	22.00	2.34%	62.56	603	1108	13.09%	567	69.99%	-4.78%	45.94%
SUNPHARMA	1844.00	-0.60	-0.03%	30.49	561	1917	3.79%	1548	19.12%	13.80%	9.53%
TATACONSUM	1187.00	5.20	0.44%	18.12	215	1283	7.46%	1007	17.85%	1.11%	4.05%
TATASTEEL	210.30	1.11	0.53%	230.90	485	224	6.28%	150	40.39%	0.11%	29.04%
TCS	2307.40	21.10	0.92%	32.98	762	3545	34.91%	2206	4.58%	-3.73%	-34.35%
TECHM	1438.50	16.30	1.15%	8.87	127	1854	22.41%	1304	10.31%	5.89%	-8.97%
TITAN	4151.90	72.10	1.77%	6.06	251	4605	9.84%	3303	25.70%	-5.85%	15.98%
TMPV	373.75	10.40	2.86%	103.56	385	744	49.76%	294	27.00%	6.63%	-47.96%
TRENT	4304.40	7.90	0.18%	5.84	253	6261	31.25%	3276	31.41%	0.17%	-20.81%
ULTRACEMCO	11733.00	164.00	1.42%	2.30	269	13110	10.50%	10325	13.64%	-2.21%	-0.11%
WIPRO	206.00	2.89	1.42%	720.37	1494	273	24.57%	187	10.46%	3.33%	-16.72%

Disclaimer / Disclosures

ANALYST CERTIFICATION

I, Mrs. Vaishali Parekh B.com, Research Analyst, author and the name subscribed to this report, hereby certify that all of the views expressed in this research report accurately reflect our views about the subject issuer(s) or securities. We also certify that no part of our compensation was, is, or will be directly or indirectly related to the specific recommendation(s) or view(s) in this report.

Terms & conditions and other disclosures:

Prabhudas Lilladher Pvt. Ltd, Mumbai, India (hereinafter referred to as "PL") is engaged in the business of Stock Broking, Portfolio Manager, Depository Participant and distribution for third party financial products. PL is a subsidiary of Prabhudas Lilladher Advisory Services Pvt Ltd. which has its various subsidiaries engaged in business of commodity broking, investment banking, financial services (margin funding) and distribution of third party financial/other products, details in respect of which are available at www.plindia.com

This document has been prepared by the Research Division of PL and is meant for use by the recipient only as information and is not for circulation. This document is not to be reported or copied or made available to others without prior permission of PL. It should not be considered or taken as an offer to sell or a solicitation to buy or sell any security.

The information contained in this report has been obtained from sources that are considered to be reliable. However, PL has not independently verified the accuracy or completeness of the same. Neither PL nor any of its affiliates, its directors or its employees accepts any responsibility of whatsoever nature for the information, statements and opinion given, made available or expressed herein or for any omission therein.

Recipients of this report should be aware that past performance is not necessarily a guide to future performance and value of investments can go down as well. The suitability or otherwise of any investments will depend upon the recipient's particular circumstances and, in case of doubt, advice should be sought from an independent expert/advisor.

Either PL or its affiliates or its directors or its employees or its representatives or its clients or their relatives may have position(s), make market, act as principal or engage in transactions of securities of companies referred to in this report and they may have used the research material prior to publication.

PL may from time to time solicit or perform investment banking or other services for any company mentioned in this document.

PL is registered as Research Analyst under Securities and Exchange Board of India (Research Analysts) Regulations, 2014 PL submits that no material disciplinary action has been taken on us by any Regulatory Authority impacting Equity Research Analysis activities.

PL or its research analysts or its associates or his relatives do not have any financial interest in the subject company.

PL or its research analysts or its associates or his relatives do not have actual/beneficial ownership of one per cent or more securities of the subject company at the end of the month immediately preceding the date of publication of the research report.

PL or its research analysts or its associates or his relatives do not have any material conflict of interest at the time of publication of the research report.

PL or its associates might have received compensation from the subject company in the past twelve months.

PL or its associates might have managed or co-managed public offering of securities for the subject company in the past twelve months or mandated by the subject company for any other assignment in the past twelve months.

PL or its associates might have received any compensation for investment banking or merchant banking or brokerage services from the subject company in the past twelve months.

PL or its associates might have received any compensation for products or services other than investment banking or merchant banking or brokerage services from the subject company in the past twelve months PL or its associates might have received any compensation or other benefits from the subject company or third party in connection with the research report.

PL encourages independence in research report preparation and strives to minimize conflict in preparation of research report. PL or its analysts did not receive any compensation or other benefits from the subject Company or third party in connection with the preparation of the research report. PL or its Research Analysts do not have any material conflict of interest at the time of publication of this report.

It is confirmed that Mrs. Vaishali Parekh B.com, Research Analyst of this report has not received any compensation from the companies mentioned in the report in the preceding twelve months compensation of our Research Analysts is not based on any specific merchant banking, investment banking or brokerage service transactions.

The Research analysts for this report certifies that all of the views expressed in this report accurately reflect his or her personal views about the subject company or companies and its or their securities, and no part of his or her compensation was, is or will be, directly or indirectly related to specific recommendations or views expressed in this report.

The research analysts for this report has not served as an officer, director or employee of the subject company PL or its research analysts have not engaged in market making activity for the subject company

Our sales people, traders, and other professionals or affiliates may provide oral or written market commentary or trading strategies to our clients that reflect opinions that are contrary to the opinions expressed herein, and our proprietary trading and investing businesses may make investment decisions that are inconsistent with the recommendations expressed herein. In reviewing these materials, you should be aware that any or all of the foregoing, among other things, may give rise to real or potential conflicts of interest.

PL and its associates, their directors and employees may (a) from time to time, have a long or short position in, and buy or sell the securities of the subject company or (b) be engaged in any other transaction involving such securities and earn brokerage or other compensation or act as a market maker in the financial instruments of the subject company or act as an advisor or lender/borrower to the subject company or may have any other potential conflict of interests with respect to any recommendation and other related information and opinions.

Regd. Office: 3rd Floor, Sadhana House, 570, P. B. Marg, Behind Mahindra Tower, Worli, Mumbai - 400 018, India.