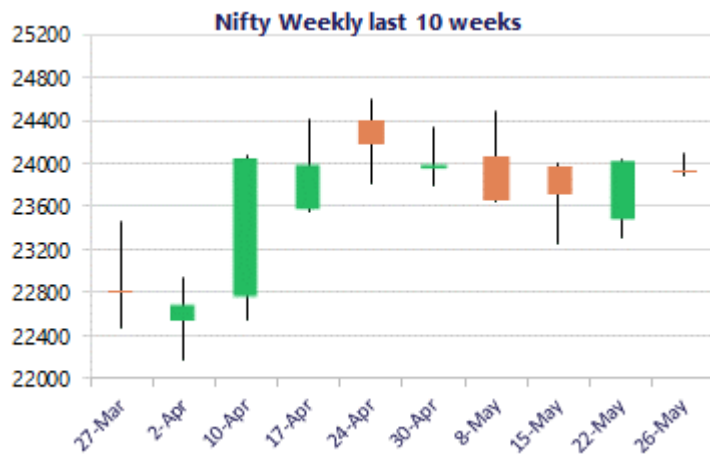
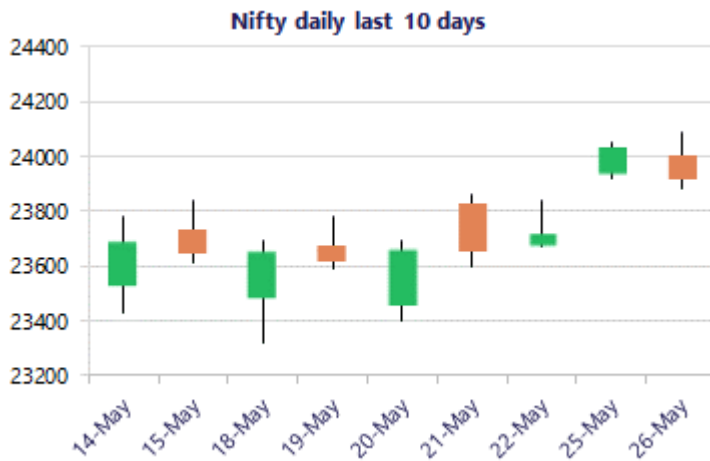


* Sensex 76009.70 - 479.26

* Nifty 23913.70 - 118.00

* Bank Nifty 55092.90 - 200.75



*Blue candle → Close rate > Open rate * Red candle → Close rate < Open rate

Market Preview

Nifty slips below the 24000 zone

Nifty witnessed a good opening session but resisted near the 24100 level erasing some gains with profit booking seen with bias overall maintained cautiously positive. BankNifty has improved the bias significantly and the intraday session witnessed some profit booking to halt the upward move closing near the 55100 level. The market breadth was overall flat with the advance decline slightly shifted towards the weaker side at close.

Market Forecast

Nifty daily range 23700 - 24200

Nifty witnessed a decent revival in the past two sessions but found resistance near the 24100 zone thereafter, slipping down with profit booking seen and closing near the 23900 zone with bias maintained with a cautiously positive approach. As mentioned earlier, the index would have the tough resistance barrier near the 24300 zone which needs to be breached decisively whereas on the downside, the 23800 level would be the important near-term support which needs to be sustained to maintain the overall bias intact.

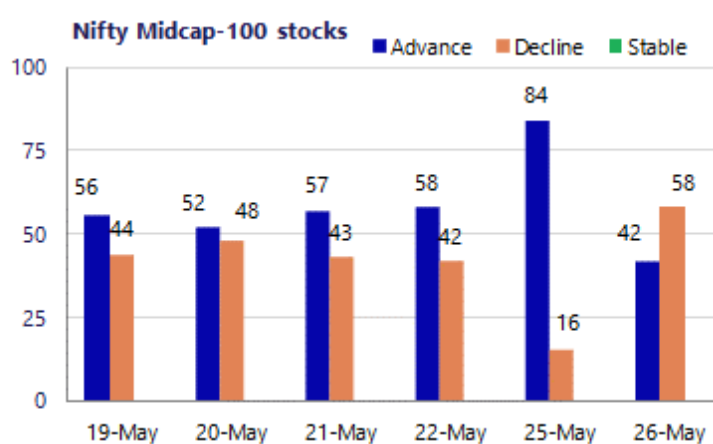
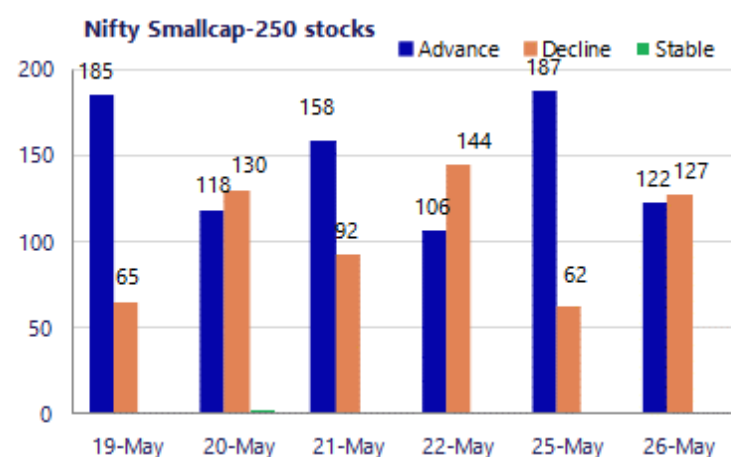
BankNifty halted the upward move finding resistance near the 55500 level and with a gradual slide erased some gains to close the session near the 55100 level with bias maintained positive for the coming sessions. As mentioned earlier, the index would have the near-term resistance of 57000 zone of the 200 period MA which needs to be breached decisively to establish more conviction whereas, on the downside, the 53500 zone shall be maintained as the important support which needs to be sustained as of now.

The support for the day is seen at 23700 levels, while the resistance is seen at 24200 levels. BankNifty would have the daily range of 54200-56000 levels.

Sensex	Period	Closing	% Chng	Trend	Reversal	2 Sup	1 Sup	Pivot	1 Res	2 Res
Nifty	Daily	23913.70	-0.49%	5	23746.20	23759	23836	23963	24041	24167
	Weekly	23719.30	0.32%	7	23850.45	23089	23404	23632	23947	24175
	Monthly	23997.55	7.46%	-4	26009.10	21175	22586	23594	25005	26013
Bank Nifty	Daily	55092.90	-0.36%	3	53891.10	54646	54870	55203	55427	55760
	Weekly	54055.35	0.64%	-2	54803.25	52324	53189	53649	54515	54975
	Monthly	54863.35	9.13%	-2	62653.00	46590	50727	54092	58228	61593
Sensex	Daily	76009.70	-0.63%	5	75424.50	75465	75737	76182	76455	76900
	Weekly	75415.35	0.24%	-1	76142.60	73415	74415	75180	76181	76946
	Monthly	76913.50	6.90%	-4	83783.80	68121	72517	75942	80338	83763

Gainers - Losers (Nifty 500 Stocks)

Gainers				Losers			
Company Name	Last Price	% Gain	Volume	Company Name	Last Price	% Loss	Volume
Adani Total Gas	713.1	8.18%	659	Container Corp	475.90	-7.06%	490.8
Afcons Infra	322.50	6.42%	305.85	CarTrade Tech	1700.4	-4.95%	1790.1
Adani Power	244.53	4.78%	234.25	Aditya Birla F	64.87	-3.70%	68.1
Asahi India	891.60	4.52%	855.05	C. E. Info Syst	842.80	-2.67%	867.9
AIA Engineering	4,143.40	4.29%	3987.9	Aegis Logistics	715.10	-2.17%	728.6
Adani Energy	1,463.30	4.20%	1405	Ashok Leyland	160.54	-2.16%	164.28
Adani Enterpris	2,969.30	4.20%	2846	Caplin Labs	2035.8	-2.03%	2099



Nifty Daily chart with RSI indicator



BankNifty Daily chart with RSI indicator



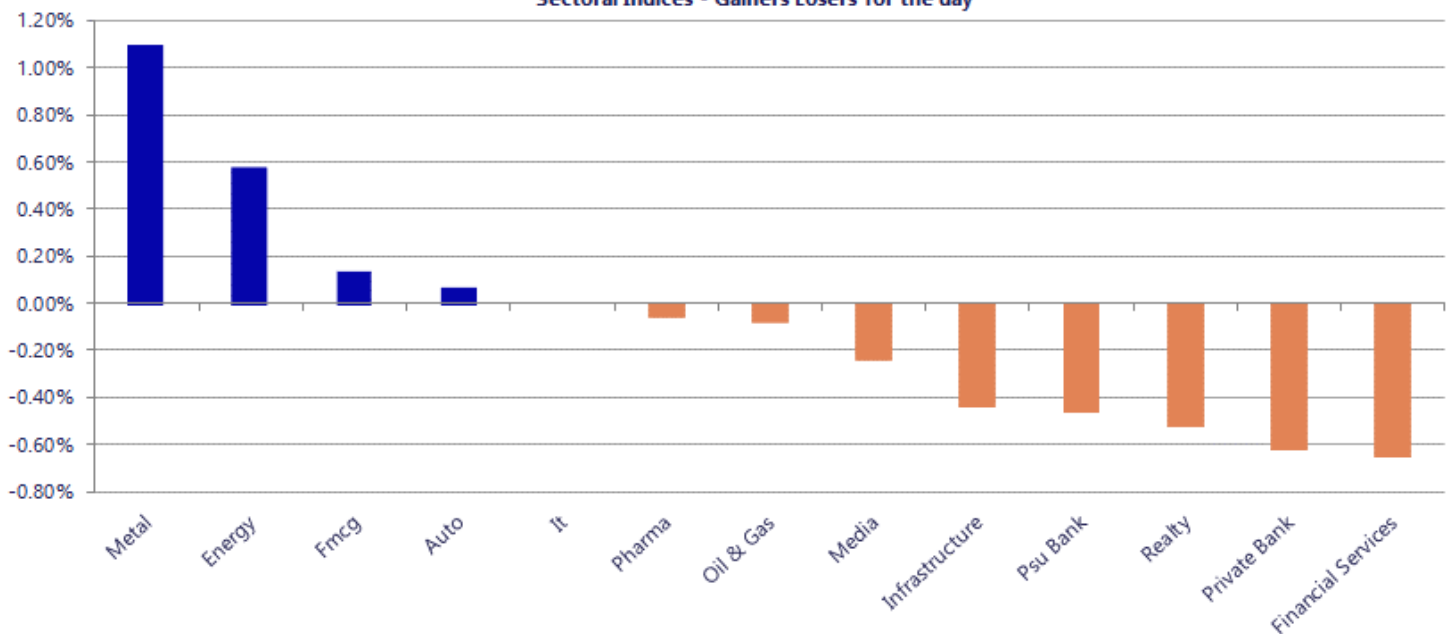
Breakouts - Cross above 200 DMA			
Company Name	LCP	Change %	200 DMA
Hitech Corp	200.16	18.89	168.36
Voler Car	237	11.14	213.25
GP Eco Solution	482.2	8.68	443.67
Prataap Snacks	1110.7	7.58	1032.46
Rockingdeals	217.45	7.13	202.97
PSP Projects	836.05	6.95	781.69
Dharmaj Crop	286.35	5.35	271.8
Themis Medicare	106.46	4.99	101.4
Fidel Softech	168	4.73	160.42
Tejas Networks	501.4	4.72	478.78
Prakash Ind	149.99	3.78	144.53
Jocil	145.94	3.33	141.23
Karnika Industr	145.8	3.14	141.36
BGR Energy	314.5	2.58	306.6
Hi-Tech Pipes	95.44	2.40	93.2
UTI NIF5GETF	65.1	2.12	63.75
Take Solutions	30.77	1.82	30.22
Sharda Crop	965.9	1.57	950.97

* Stocks crossing above its Simple Moving Average (200DMA)

Breakdown - Cross below 200 DMA			
Company Name	LCP	Change %	200 DMA
BCL Industries	32.82	-5.28	34.65
NK Industries	63.5	-4.87	66.75
Suryalakshmi Co	57.19	-4.14	59.66
Tunwal E-Motors	30.6	-4.14	31.92
20 Microns	189.41	-2.68	194.62
Greenlam Ind	234.13	-2.59	240.36
GeeCee Ventures	318.2	-2.57	326.59
Paragon Fine &	46.95	-1.82	47.82
Nitco	95.01	-1.54	96.5
Superhouse	152.31	-1.54	154.7
STEL Holdings	457.5	-1.53	464.63
Aries Agro	355.05	-1.47	360.33
Techno Electric	1201.2	-1.43	1218.6
NESCO	1240.1	-1.32	1256.63
SRG Housing Fin	279.85	-1.22	283.31
Bafna Pharma	130.16	-1.10	131.61
Enviro Infra	207.32	-0.77	208.92
Polyplex Corp	905.7	-0.72	912.29

* Stocks crossing below its Simple Moving Average (200DMA)

Sectoral Indices - Gainers Losers for the day



Nifty 50 Stocks - Summary Details											
Symbol	LTP	Chng	% Chng	Volume (lacs)	Turnover (crs.)	52w High	Diff with 52w H	52w Low	Diff with 52w L	365 days % chng	30 days % chng
NIFTY 50	23913.70	-118.00	-0.49%	3876.61	29823	26373	9.33%	22183	7.80%	0.07%	-4.35%
ADANIEN	2973.00	123.30	4.33%	48.98	1431	2979	0.21%	1753	69.59%	29.96%	20.19%
ADANIPTS	1809.90	7.00	0.39%	21.03	381	1824	0.77%	1291	40.25%	14.18%	29.26%
APOLLOHOSP	8265.00	-139.00	-1.65%	3.10	258	8443	2.11%	6697	23.42%	6.89%	16.47%
ASIANPAINT	2644.40	-13.40	-0.50%	4.86	129	2986	11.43%	2115	25.03%	6.41%	13.63%
AXISBANK	1301.50	-9.70	-0.74%	64.50	840	1418	8.24%	1043	24.84%	-4.71%	7.10%
BAJAJ-AUTO	10605.00	114.00	1.09%	5.59	591	10785	1.67%	7859	34.95%	10.75%	18.38%
BAJAJFINSV	1807.00	-0.40	-0.02%	8.11	146	2195	17.68%	1597	13.15%	2.05%	-11.97%
BAJFINANCE	932.00	-9.90	-1.05%	84.89	797	1103	15.46%	788	18.29%	1.13%	0.54%
BEL	420.50	-1.35	-0.32%	122.99	519	473	11.18%	361	16.42%	-5.39%	9.35%
BHARTIARTL	1847.00	-27.80	-1.48%	58.02	1077	2175	15.06%	1741	6.12%	1.79%	-0.02%
CIPLA	1418.70	4.80	0.34%	11.33	160	1673	15.20%	1166	21.70%	9.55%	-4.41%
COALINDIA	455.90	-2.10	-0.46%	170.69	796	491	7.20%	369	23.67%	-0.02%	13.21%
DRREDDY	1329.60	-1.80	-0.14%	19.09	254	1380	3.63%	1148	15.78%	0.95%	7.15%
EICHERMOT	7356.00	-58.00	-0.78%	3.88	287	8230	10.62%	5220	40.93%	3.44%	35.53%
ETERNAL	251.00	3.33	1.34%	244.26	612	368	31.88%	213	18.06%	-2.25%	10.67%
GRASIM	3164.90	-6.70	-0.21%	9.84	312	3196	0.98%	2503	26.47%	15.54%	19.14%
HCLTECH	1162.90	-2.80	-0.24%	11.96	140	1780	34.67%	1103	5.39%	-3.35%	-30.52%
HDFCBANK	780.25	-6.60	-0.84%	315.12	2470	1021	23.54%	727	7.38%	-0.59%	-19.57%
HDFCLIFE	619.90	-0.10	-0.02%	22.41	139	821	24.47%	555	11.67%	5.39%	-20.53%
HINDALCO	1107.20	7.60	0.69%	58.75	651	1120	1.13%	618	79.16%	5.61%	67.39%
HINDUNILVR	2204.00	7.50	0.34%	23.03	508	2750	19.85%	2023	8.97%	-5.30%	-7.94%
ICICIBANK	1280.70	-11.10	-0.86%	183.99	2369	1500	14.62%	1188	7.84%	-3.43%	-12.32%
INDIGO	4483.00	-18.90	-0.42%	7.60	340	6233	28.07%	3895	15.09%	-0.89%	-17.29%
INFY	1166.00	-2.50	-0.21%	80.04	938	1728	32.52%	1089	7.07%	0.99%	-26.23%
ITC	301.90	-2.05	-0.67%	375.36	1133	444	32.04%	287	5.19%	0.10%	-31.84%
JIOFIN	241.19	-0.55	-0.23%	104.27	252	339	28.77%	223	8.01%	-1.85%	-14.40%
JSWSTEEL	1293.60	4.20	0.33%	17.13	222	1314	1.55%	962	34.45%	3.02%	25.31%
KOTAKBANK	389.50	-3.35	-0.85%	150.58	586	453	14.06%	346	12.74%	5.03%	-6.79%
LT	4037.00	3.60	0.09%	15.53	627	4440	9.08%	3288	22.78%	0.57%	10.64%
M&M	3110.90	-28.10	-0.90%	17.91	560	3840	18.98%	2896	7.42%	2.39%	1.00%
MARUTI	13238.00	68.00	0.52%	2.57	340	17370	23.79%	12016	10.17%	1.46%	6.58%
MAXHEALTH	993.00	-7.85	-0.78%	25.14	250	1314	24.45%	903	9.97%	-0.64%	-15.42%
NESTLEIND	1431.70	18.10	1.28%	14.73	210	1498	4.43%	1085	31.99%	0.73%	16.68%
NTPC	389.55	-0.50	-0.13%	90.57	353	414	6.00%	316	23.45%	-3.06%	13.41%
ONGC	287.35	2.40	0.84%	105.95	304	308	6.55%	229	25.69%	0.90%	16.84%
POWERGRID	292.80	-2.55	-0.86%	56.23	165	325	9.89%	250	17.12%	-7.46%	-1.31%
RELIANCE	1357.00	-10.00	-0.73%	137.67	1871	1612	15.81%	1290	5.19%	2.20%	-5.42%
SBILIFE	1885.00	-16.90	-0.89%	8.12	153	2132	11.59%	1720	9.59%	6.56%	4.63%
SBIN	969.80	0.20	0.02%	162.66	1579	1235	21.45%	782	24.06%	-11.92%	22.08%
SHRIRAMFIN	952.85	-9.10	-0.95%	43.50	416	1108	14.00%	567	68.20%	-5.78%	43.39%
SUNPHARMA	1842.50	1.90	0.10%	23.37	428	1917	3.87%	1548	19.02%	13.71%	9.93%
TATACONSUM	1190.00	2.80	0.24%	17.67	210	1283	7.23%	1007	18.15%	1.36%	3.81%
TATASTEEL	210.44	0.22	0.10%	177.74	374	224	6.22%	150	40.48%	0.18%	29.49%
TCS	2281.40	-26.80	-1.16%	35.87	821	3545	35.64%	2206	3.40%	-4.82%	-35.50%
TECHM	1460.00	24.50	1.71%	17.25	250	1854	21.25%	1304	11.95%	7.47%	-8.83%
TITAN	4115.00	-44.20	-1.06%	7.66	315	4605	10.64%	3303	24.58%	-6.69%	13.98%
TMPV	385.60	12.35	3.31%	213.41	816	744	48.17%	294	31.02%	10.01%	-47.11%
TRENT	4238.90	-61.10	-1.42%	5.62	240	6261	32.30%	3276	29.41%	-1.36%	-23.29%
ULTRACEMCO	11647.00	-79.00	-0.67%	2.11	246	13110	11.16%	10325	12.80%	-2.93%	-0.36%
WIPRO	203.49	-3.35	-1.62%	463.93	956	273	25.49%	187	9.11%	2.07%	-18.68%

Disclaimer / Disclosures

ANALYST CERTIFICATION

I, Mrs. Vaishali Parekh B.com, Research Analyst, author and the name subscribed to this report, hereby certify that all of the views expressed in this research report accurately reflect our views about the subject issuer(s) or securities. We also certify that no part of our compensation was, is, or will be directly or indirectly related to the specific recommendation(s) or view(s) in this report.

Terms & conditions and other disclosures:

Prabhudas Lilladher Pvt. Ltd, Mumbai, India (hereinafter referred to as "PL") is engaged in the business of Stock Broking, Portfolio Manager, Depository Participant and distribution for third party financial products. PL is a subsidiary of Prabhudas Lilladher Advisory Services Pvt Ltd. which has its various subsidiaries engaged in business of commodity broking, investment banking, financial services (margin funding) and distribution of third party financial/other products, details in respect of which are available at www.plindia.com

This document has been prepared by the Research Division of PL and is meant for use by the recipient only as information and is not for circulation. This document is not to be reported or copied or made available to others without prior permission of PL. It should not be considered or taken as an offer to sell or a solicitation to buy or sell any security.

The information contained in this report has been obtained from sources that are considered to be reliable. However, PL has not independently verified the accuracy or completeness of the same. Neither PL nor any of its affiliates, its directors or its employees accepts any responsibility of whatsoever nature for the information, statements and opinion given, made available or expressed herein or for any omission therein.

Recipients of this report should be aware that past performance is not necessarily a guide to future performance and value of investments can go down as well. The suitability or otherwise of any investments will depend upon the recipient's particular circumstances and, in case of doubt, advice should be sought from an independent expert/advisor.

Either PL or its affiliates or its directors or its employees or its representatives or its clients or their relatives may have position(s), make market, act as principal or engage in transactions of securities of companies referred to in this report and they may have used the research material prior to publication.

PL may from time to time solicit or perform investment banking or other services for any company mentioned in this document.

PL is registered as Research Analyst under Securities and Exchange Board of India (Research Analysts) Regulations, 2014 PL submits that no material disciplinary action has been taken on us by any Regulatory Authority impacting Equity Research Analysis activities.

PL or its research analysts or its associates or his relatives do not have any financial interest in the subject company.

PL or its research analysts or its associates or his relatives do not have actual/beneficial ownership of one per cent or more securities of the subject company at the end of the month immediately preceding the date of publication of the research report.

PL or its research analysts or its associates or his relatives do not have any material conflict of interest at the time of publication of the research report.

PL or its associates might have received compensation from the subject company in the past twelve months.

PL or its associates might have managed or co-managed public offering of securities for the subject company in the past twelve months or mandated by the subject company for any other assignment in the past twelve months.

PL or its associates might have received any compensation for investment banking or merchant banking or brokerage services from the subject company in the past twelve months.

PL or its associates might have received any compensation for products or services other than investment banking or merchant banking or brokerage services from the subject company in the past twelve months PL or its associates might have received any compensation or other benefits from the subject company or third party in connection with the research report.

PL encourages independence in research report preparation and strives to minimize conflict in preparation of research report. PL or its analysts did not receive any compensation or other benefits from the subject Company or third party in connection with the preparation of the research report. PL or its Research Analysts do not have any material conflict of interest at the time of publication of this report.

It is confirmed that Mrs. Vaishali Parekh B.com, Research Analyst of this report has not received any compensation from the companies mentioned in the report in the preceding twelve months compensation of our Research Analysts is not based on any specific merchant banking, investment banking or brokerage service transactions.

The Research analysts for this report certifies that all of the views expressed in this report accurately reflect his or her personal views about the subject company or companies and its or their securities, and no part of his or her compensation was, is or will be, directly or indirectly related to specific recommendations or views expressed in this report.

The research analysts for this report has not served as an officer, director or employee of the subject company PL or its research analysts have not engaged in market making activity for the subject company

Our sales people, traders, and other professionals or affiliates may provide oral or written market commentary or trading strategies to our clients that reflect opinions that are contrary to the opinions expressed herein, and our proprietary trading and investing businesses may make investment decisions that are inconsistent with the recommendations expressed herein. In reviewing these materials, you should be aware that any or all of the foregoing, among other things, may give rise to real or potential conflicts of interest.

PL and its associates, their directors and employees may (a) from time to time, have a long or short position in, and buy or sell the securities of the subject company or (b) be engaged in any other transaction involving such securities and earn brokerage or other compensation or act as a market maker in the financial instruments of the subject company or act as an advisor or lender/borrower to the subject company or may have any other potential conflict of interests with respect to any recommendation and other related information and opinions.

Regd. Office: 3rd Floor, Sadhana House, 570, P. B. Marg, Behind Mahindra Tower, Worli, Mumbai - 400 018, India.