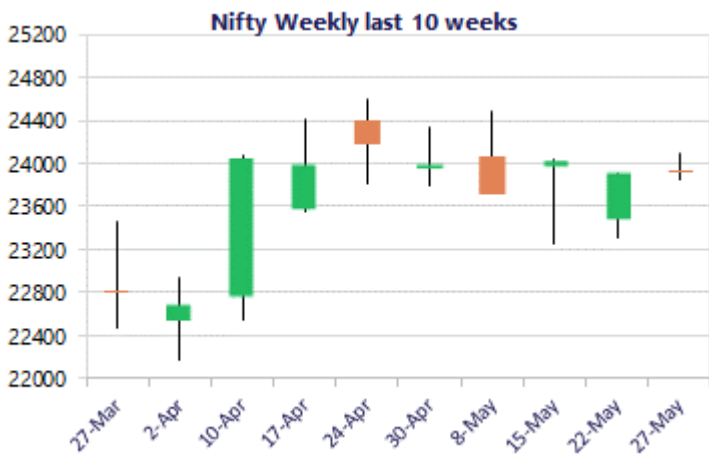
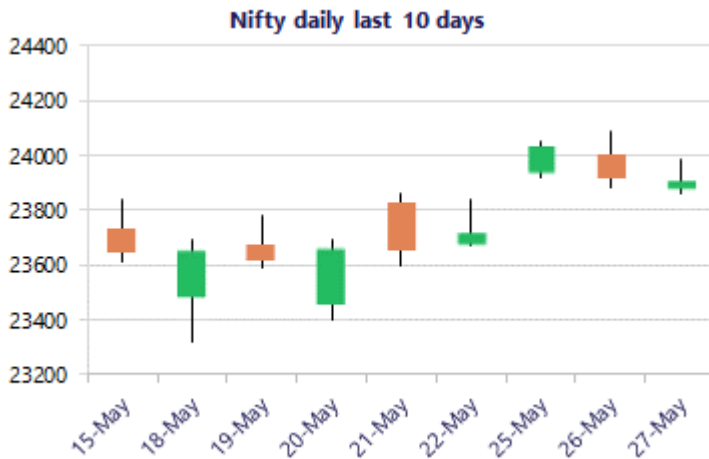


* Sensex 75867.80 - 141.90

* Nifty 23907.15 - 6.55

* Bank Nifty 54853.85 - 239.05



*Blue candle → Close rate > Open rate * Red candle → Close rate < Open rate

Nifty ends marginally in the red.

Nifty continued to remain range-bound, hovering below the important 50 EMA zone at the 24000 level, while once again finding resistance near the 24000 zone, witnessing a sluggish session, the overall bias still remained positive. Bank Nifty overall remained subdued, hovering below the crucial 50 EMA at the 55300 zone and maintaining a cautious approach. The market breadth ended on a flat note, with the advance-decline ratio indicating a neutral ratio at close.

Market Forecast

Nifty daily range 23700 - 24100

Nifty witnessed consolidation in the range of the 23850 – 24000 zone with a narrow rangebound session closing on a flat note with bias and sentiment maintained positive with a slightly cautious approach. As mentioned earlier, the index would need to sustain itself above the near-term support of the 23800 level, while the important support zone is positioned near the 23800 level, which needs to be sustained as of now. On the upside, a breach above the 24000 level shall trigger the next higher targets of 24200 and 24400 levels in the coming days.

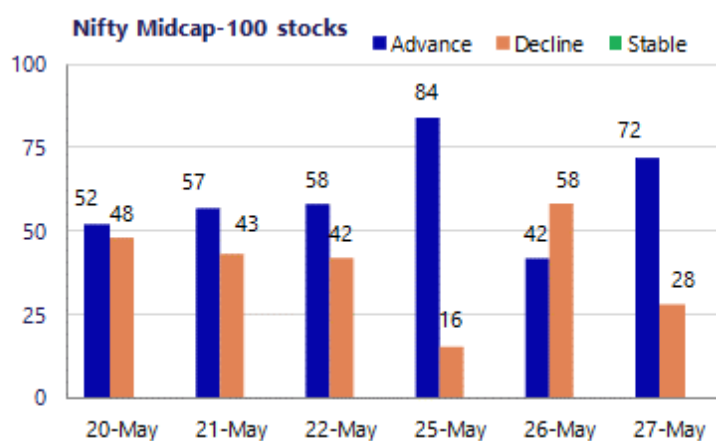
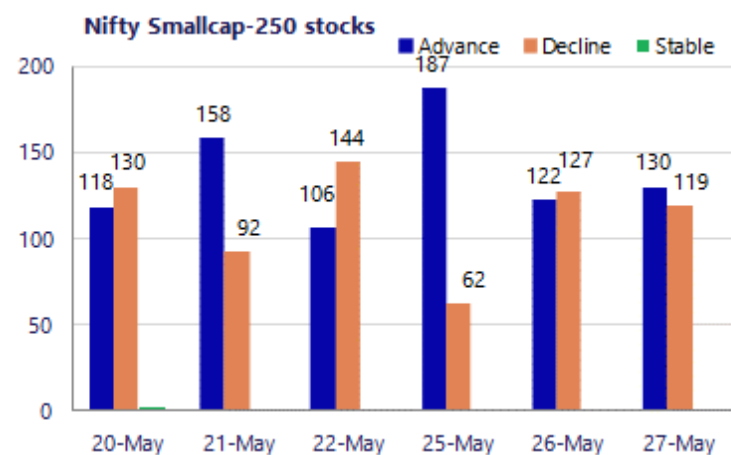
BankNifty continued to trade weak during the session, witnessing steady profit booking activity near the 50EMA level of 55221 in the morning session and closed near the lower end in the 54850 zone with bias and sentiment maintained with a cautious approach. The index would have the crucial 54100 zone, which is the GAP area, and would need to sustain it to avoid any fresh trigger of selling pressure with the next major support positioned near the 52800 zone.

The support for the day is seen at 23700 levels, while the resistance is seen at 24100 levels. BankNifty would have the daily range of 54000-55500 levels.

Sensex	Period	Closing	% Chng	Trend	Reversal	2 Sup	1 Sup	Pivot	1 Res	2 Res
Nifty	Daily	23907.15	-0.03%	6	23795.40	23791	23849	23916	23974	24041
	Weekly	23719.30	0.32%	7	23850.45	23089	23404	23632	23947	24175
	Monthly	23997.55	7.46%	-4	26009.10	21175	22586	23594	25005	26013
Bank Nifty	Daily	54853.85	-0.43%	4	54200.85	54455	54654	54938	55138	55421
	Weekly	54055.35	0.64%	-2	54803.25	52324	53189	53649	54515	54975
	Monthly	54863.35	9.13%	-2	62653.00	46590	50727	54092	58228	61593
Sensex	Daily	75867.80	-0.19%	6	75566.20	75470	75669	75947	76146	76423
	Weekly	75415.35	0.24%	-1	76142.60	73415	74415	75180	76181	76946
	Monthly	76913.50	6.90%	-4	83783.80	68121	72517	75942	80338	83763

Gainers - Losers (Nifty 500 Stocks)

Gainers				Losers			
Company Name	Last Price	% Gain	Volume	Company Name	Last Price	% Loss	Volume
Adani Total Gas	808.55	13.39%	719.8	Blue Jet	470.25	-5.87%	492
Cummins	6,027.50	11.24%	5414	Bharat Dynamics	1282.2	-3.59%	1329.9
Exide Ind	394.15	7.62%	365	BSE Limited	4,248.40	-3.52%	4437
Apar Ind	13,426.00	7.10%	12548	Brainbees Solu	229.53	-3.20%	245
AIA Engineering	4,428.10	6.87%	4143.4	Ajanta Pharma	3,020.80	-2.46%	3100.1
CG Power	934.80	6.33%	882.55	Angel One	336.95	-2.18%	345
ABB India	7,219.00	6.10%	6841.5	Aster DM Health	741.25	-2.16%	758.1



Nifty Daily chart with RSI indicator



BankNifty Daily chart with RSI indicator



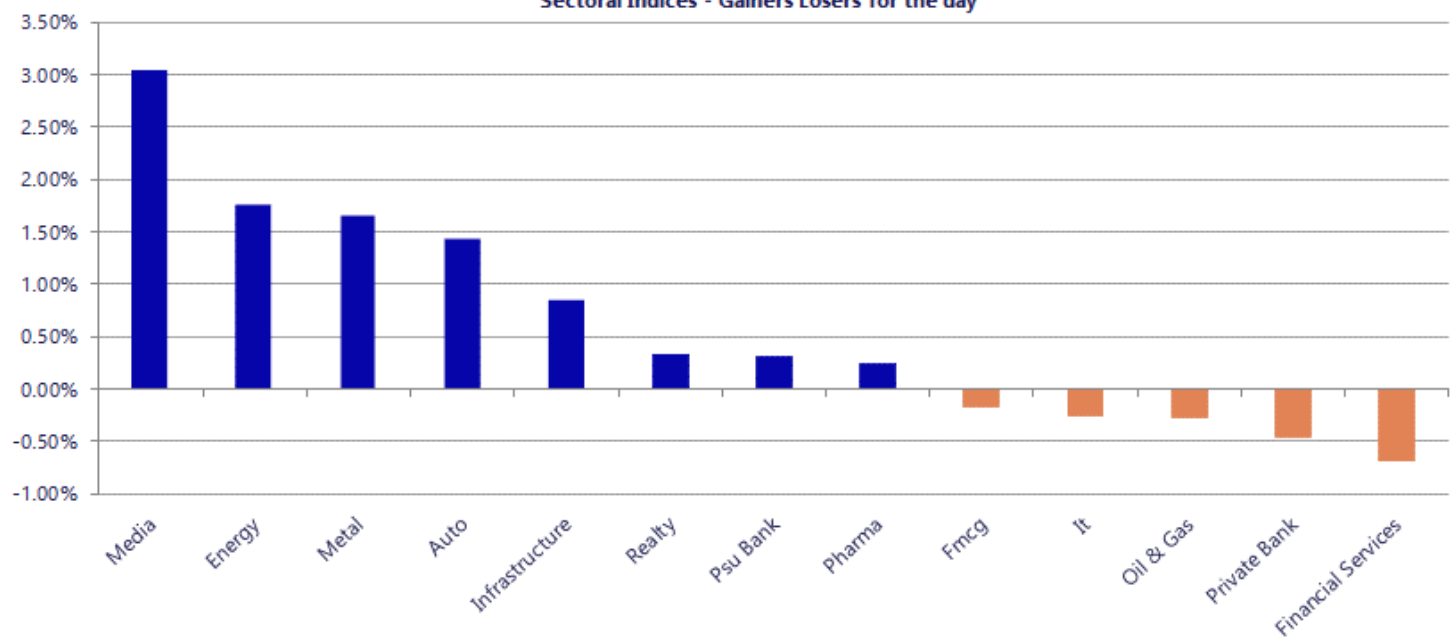
Breakouts - Cross above 200 DMA			
Company Name	LCP	Change %	200 DMA
Guj Themis	432.2	16.87	369.81
Paragon Fine &	53.95	12.91	47.78
B&B Triplewall	208.13	7.91	192.88
TVS Srichakra	4030.3	6.11	3798.21
FDC	429.55	5.45	407.36
Nupur	63.16	4.97	60.17
Simplex Infra	260.67	4.80	248.73
Finolex Ind	191.93	4.43	183.78
Stove	605.85	3.10	587.65
Orient Electric	193.16	2.68	188.12
HEC Infra Proje	133.07	2.42	129.92
TPL Plastech	69.83	2.29	68.27
Jindal Worldwid	30.89	2.08	30.26
GP Petroleums	36.62	2.03	35.89
Varroc Engineer	587.3	2.02	575.67
LIC Housing Fin	556.45	1.98	545.64
Kronox Lab Scie	143.12	1.87	140.49
STC India	123.08	1.85	120.85

* Stocks crossing above its Simple Moving Average (200DMA)

Breakdown - Cross below 200 DMA			
Company Name	LCP	Change %	200 DMA
Likhitha	195.7	-4.29	204.47
Karnika Industr	135.7	-4.02	141.38
Chemcon Special	193.18	-3.77	200.75
Morepen Lab	42.22	-3.41	43.71
Cosmo First	748.15	-3.02	771.41
Solex Energy	1271.1	-2.97	1310.06
Remus Pharmaceu	712.55	-2.84	733.37
LIC India	830	-2.77	853.62
BL Kashyap	54.38	-2.51	55.78
Sanofi Consumer	4529.9	-2.39	4640.98
Srivasavi	54	-2.37	55.31
Biofil Chem	35.62	-2.09	36.38
Vital Chemtech	54.5	-1.84	55.52
Sharda Crop	934.8	-1.61	950.11
Repc Home	387.25	-1.28	392.28
LT Foods	404.7	-1.22	409.68
Religare Enterp	237.5	-1.02	239.95
SOLARA ACTIVE P	545.8	-0.90	550.77

* Stocks crossing below its Simple Moving Average (200DMA)

Sectoral Indices - Gainers Losers for the day



Nifty 50 Stocks - Summary Details											
Symbol	LTP	Chng	% Chng	Volume (lacs)	Turnover (crs.)	52w High	Diff with 52w H	52w Low	Diff with 52w L	365 days % chng	30 days % chng
NIFTY 50	23907.15	-6.55	-0.03%	5291.68	34792	26373	9.35%	22183	7.77%	-0.77%	-3.70%
ADANIEN	2972.80	3.50	0.12%	38.27	1140	3028	1.81%	1753	69.58%	28.04%	20.54%
ADANIPTS	1823.00	11.80	0.65%	21.02	384	1843	1.07%	1291	41.26%	11.94%	29.82%
APOLLOHSP	8279.50	21.00	0.25%	2.94	242	8443	1.94%	6697	23.64%	5.81%	17.05%
ASIANPAINT	2675.00	28.00	1.06%	8.58	230	2986	10.41%	2115	26.48%	7.64%	14.93%
AXISBANK	1304.50	5.20	0.40%	72.43	944	1418	8.02%	1043	25.13%	-1.49%	9.11%
BAJAJ-AUTO	10801.00	208.00	1.96%	3.18	342	10834	0.30%	7859	37.44%	11.79%	20.51%
BAJAJFINSV	1811.70	11.00	0.61%	3.40	61	2195	17.46%	1597	13.44%	2.23%	-10.75%
BAJFINANCE	935.00	4.80	0.52%	53.50	498	1103	15.19%	788	18.67%	1.43%	1.95%
BEL	419.90	-0.20	-0.05%	108.72	455	473	11.31%	361	16.25%	-3.60%	8.95%
BHARTIARTL	1847.40	0.50	0.03%	86.53	1605	2175	15.04%	1741	6.14%	1.50%	0.20%
CIPLA	1422.00	4.50	0.32%	9.37	133	1673	15.00%	1166	21.99%	7.96%	-3.95%
COALINDIA	463.60	5.45	1.19%	1146.49	5164	491	5.63%	369	25.76%	2.45%	15.91%
DRREDDY	1320.00	-7.90	-0.59%	9.59	127	1380	4.33%	1148	14.94%	-1.09%	6.18%
EICHERMOT	7426.00	50.00	0.68%	2.83	209	8230	9.77%	5220	42.27%	3.51%	37.79%
ETERNAL	255.71	5.54	2.21%	366.57	937	368	30.60%	213	20.28%	0.09%	13.76%
GRASIM	3168.50	3.50	0.11%	3.18	101	3198	0.91%	2503	26.61%	14.05%	21.20%
HCLTECH	1166.90	5.00	0.43%	10.04	117	1780	34.45%	1103	5.75%	-4.99%	-29.37%
HDFCBANK	759.15	-19.75	-2.54%	636.80	4853	1021	25.61%	727	4.47%	-3.88%	-21.18%
HDFCLIFE	610.45	-8.40	-1.36%	12.66	77	821	25.62%	555	9.97%	2.20%	-21.31%
HINDALCO	1150.50	46.70	4.23%	75.59	866	1154	0.30%	618	86.17%	8.35%	74.46%
HINDUNILVR	2201.90	-7.50	-0.34%	6.17	136	2750	19.93%	2023	8.87%	-5.43%	-7.49%
ICICIBANK	1272.50	-6.60	-0.52%	183.66	2347	1500	15.17%	1188	7.15%	-3.17%	-12.02%
INDIGO	4551.00	70.20	1.57%	13.69	620	6233	26.98%	3895	16.84%	-0.22%	-14.35%
INFY	1162.00	-5.70	-0.49%	63.72	739	1728	32.75%	1089	6.70%	-0.71%	-25.99%
ITC	292.25	-1.40	-0.48%	254.45	745	444	34.21%	287	1.83%	-3.82%	-32.65%
JIOFIN	243.60	2.93	1.22%	91.41	222	339	28.06%	223	9.09%	-3.96%	-16.40%
JSWSTEEL	1310.00	16.40	1.27%	20.31	266	1328	1.36%	962	36.15%	2.13%	29.23%
KOTAKBANK	389.40	0.75	0.19%	93.26	363	453	14.08%	346	12.71%	3.34%	-6.28%
LT	4050.00	12.20	0.30%	16.07	651	4440	8.78%	3288	23.17%	-0.09%	11.26%
M&M	3128.10	20.80	0.67%	14.09	440	3840	18.54%	2896	8.01%	0.83%	2.90%
MARUTI	13395.00	187.00	1.42%	3.22	427	17370	22.88%	12016	11.48%	1.31%	7.90%
MAXHEALTH	995.30	1.35	0.14%	26.22	260	1314	24.27%	903	10.22%	-1.44%	-14.15%
NESTLEIND	1427.60	-1.00	-0.07%	11.14	160	1498	4.71%	1085	31.61%	0.73%	16.02%
NTPC	397.85	8.15	2.09%	144.19	572	414	3.99%	316	26.08%	-3.01%	17.52%
ONGC	273.30	-14.20	-4.94%	291.77	808	308	11.12%	229	19.55%	-4.41%	11.76%
POWERGRID	300.55	8.00	2.73%	98.83	295	325	7.51%	250	20.22%	-6.34%	2.04%
RELIANCE	1352.00	-4.30	-0.32%	132.15	1790	1612	16.12%	1290	4.81%	-1.01%	-4.93%
SBILIFE	1865.00	-18.20	-0.97%	3.73	70	2132	12.52%	1720	8.43%	2.73%	3.42%
SBIN	967.30	-1.20	-0.12%	81.11	787	1235	21.66%	782	23.74%	-13.00%	21.87%
SHRIRAMFIN	963.95	11.80	1.24%	35.92	344	1108	13.00%	567	70.16%	-1.10%	45.63%
SUNPHARMA	1840.00	-0.80	-0.04%	13.86	255	1917	4.00%	1548	18.86%	6.14%	9.30%
TATACONSUM	1205.00	17.40	1.47%	16.08	193	1283	6.06%	1007	19.64%	3.83%	5.85%
TATASTEEL	214.51	4.04	1.92%	391.10	842	224	4.41%	150	43.20%	0.58%	32.69%
TCS	2289.90	13.70	0.60%	26.54	604	3545	35.40%	2206	3.78%	-6.44%	-34.55%
TECHM	1456.20	-2.50	-0.17%	18.25	267	1854	21.46%	1304	11.66%	4.30%	-8.55%
TITAN	4155.00	49.10	1.20%	4.74	196	4605	9.77%	3303	25.79%	-6.46%	15.76%
TMPV	403.05	17.45	4.53%	162.93	643	744	45.83%	294	36.95%	13.74%	-43.74%
TRENT	4242.90	3.30	0.08%	4.30	183	6261	32.23%	3276	29.53%	-0.42%	-23.87%
ULTRACEMCO	11713.00	90.00	0.77%	2.44	285	13110	10.66%	10325	13.44%	-2.47%	2.56%
WIPRO	201.70	-2.03	-1.00%	394.66	798	273	26.14%	187	8.15%	-1.63%	-18.75%

Disclaimer / Disclosures

ANALYST CERTIFICATION

I, Mrs. Vaishali Parekh B.com, Research Analyst, author and the name subscribed to this report, hereby certify that all of the views expressed in this research report accurately reflect our views about the subject issuer(s) or securities. We also certify that no part of our compensation was, is, or will be directly or indirectly related to the specific recommendation(s) or view(s) in this report.

Terms & conditions and other disclosures:

Prabhudas Lilladher Pvt. Ltd, Mumbai, India (hereinafter referred to as "PL") is engaged in the business of Stock Broking, Portfolio Manager, Depository Participant and distribution for third party financial products. PL is a subsidiary of Prabhudas Lilladher Advisory Services Pvt Ltd. which has its various subsidiaries engaged in business of commodity broking, investment banking, financial services (margin funding) and distribution of third party financial/other products, details in respect of which are available at www.plindia.com

This document has been prepared by the Research Division of PL and is meant for use by the recipient only as information and is not for circulation. This document is not to be reported or copied or made available to others without prior permission of PL. It should not be considered or taken as an offer to sell or a solicitation to buy or sell any security.

The information contained in this report has been obtained from sources that are considered to be reliable. However, PL has not independently verified the accuracy or completeness of the same. Neither PL nor any of its affiliates, its directors or its employees accepts any responsibility of whatsoever nature for the information, statements and opinion given, made available or expressed herein or for any omission therein.

Recipients of this report should be aware that past performance is not necessarily a guide to future performance and value of investments can go down as well. The suitability or otherwise of any investments will depend upon the recipient's particular circumstances and, in case of doubt, advice should be sought from an independent expert/advisor.

Either PL or its affiliates or its directors or its employees or its representatives or its clients or their relatives may have position(s), make market, act as principal or engage in transactions of securities of companies referred to in this report and they may have used the research material prior to publication.

PL may from time to time solicit or perform investment banking or other services for any company mentioned in this document.

PL is registered as Research Analyst under Securities and Exchange Board of India (Research Analysts) Regulations, 2014 PL submits that no material disciplinary action has been taken on us by any Regulatory Authority impacting Equity Research Analysis activities.

PL or its research analysts or its associates or his relatives do not have any financial interest in the subject company.

PL or its research analysts or its associates or his relatives do not have actual/beneficial ownership of one per cent or more securities of the subject company at the end of the month immediately preceding the date of publication of the research report.

PL or its research analysts or its associates or his relatives do not have any material conflict of interest at the time of publication of the research report.

PL or its associates might have received compensation from the subject company in the past twelve months.

PL or its associates might have managed or co-managed public offering of securities for the subject company in the past twelve months or mandated by the subject company for any other assignment in the past twelve months.

PL or its associates might have received any compensation for investment banking or merchant banking or brokerage services from the subject company in the past twelve months.

PL or its associates might have received any compensation for products or services other than investment banking or merchant banking or brokerage services from the subject company in the past twelve months PL or its associates might have received any compensation or other benefits from the subject company or third party in connection with the research report.

PL encourages independence in research report preparation and strives to minimize conflict in preparation of research report. PL or its analysts did not receive any compensation or other benefits from the subject Company or third party in connection with the preparation of the research report. PL or its Research Analysts do not have any material conflict of interest at the time of publication of this report.

It is confirmed that Mrs. Vaishali Parekh B.com, Research Analyst of this report has not received any compensation from the companies mentioned in the report in the preceding twelve months compensation of our Research Analysts is not based on any specific merchant banking, investment banking or brokerage service transactions.

The Research analysts for this report certifies that all of the views expressed in this report accurately reflect his or her personal views about the subject company or companies and its or their securities, and no part of his or her compensation was, is or will be, directly or indirectly related to specific recommendations or views expressed in this report.

The research analysts for this report has not served as an officer, director or employee of the subject company PL or its research analysts have not engaged in market making activity for the subject company

Our sales people, traders, and other professionals or affiliates may provide oral or written market commentary or trading strategies to our clients that reflect opinions that are contrary to the opinions expressed herein, and our proprietary trading and investing businesses may make investment decisions that are inconsistent with the recommendations expressed herein. In reviewing these materials, you should be aware that any or all of the foregoing, among other things, may give rise to real or potential conflicts of interest.

PL and its associates, their directors and employees may (a) from time to time, have a long or short position in, and buy or sell the securities of the subject company or (b) be engaged in any other transaction involving such securities and earn brokerage or other compensation or act as a market maker in the financial instruments of the subject company or act as an advisor or lender/borrower to the subject company or may have any other potential conflict of interests with respect to any recommendation and other related information and opinions.

Regd. Office: 3rd Floor, Sadhana House, 570, P. B. Marg, Behind Mahindra Tower, Worli, Mumbai - 400 018, India.