

\* Sensex 76913.50 - 582.86

\* Nifty 23997.55 - 180.10

\* Bank Nifty 54863.35 - 540.25

## Market Preview

### Nifty at crucial juncture of 24000 zone

Nifty witnessed a volatile session with huge swings and finally closed near the 24000 level with a doji formation on the daily chart with bias precariously placed. BankNifty witnessed fluctuations during the session with weak bias ending the session in the red near 54900 zone. The market breadth was weak with the advance decline indicating a ratio of 1:2 at close.

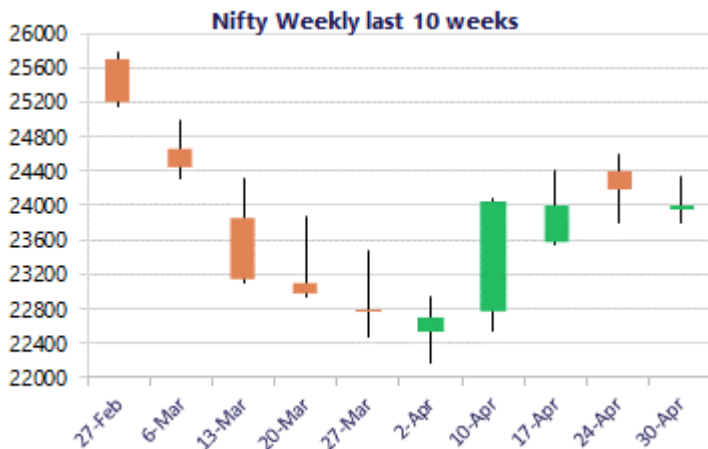
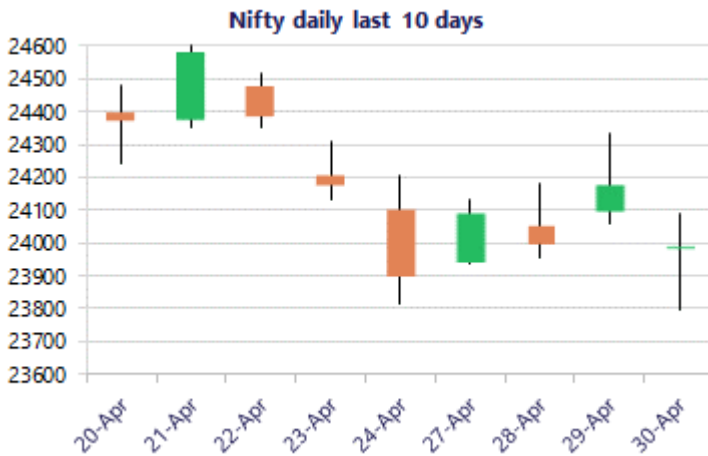
## Market Forecast

### Nifty daily range 23600 - 24300

Nifty opened on a weak note with a huge gap down to find a significant revival from the important support at 23800 zone, to end the session in the red just near the 24000 zone with bias and sentiment maintained with a cautious approach awaiting the election result in the coming session. As mentioned earlier, the index is currently hovering between the crucial band of 24300 and 23800 levels for the time being and would need a decisive breach on either side to get clarity for a directional move in the coming days.

BankNifty crashed below the 55300 zone with a negative opening hitting the low near the near-term support zone at 54400 level and thereafter, with a recovery witnessed closed the session near 54850 zone forming a doji pattern on the daily chart with bias precariously placed as of now. As mentioned earlier, the important support at 53500 levels shall be the crucial zone which needs to be sustained in the coming sessions whereas on the upside, the 200 period MA at 57300 level would be the important hurdle which needs to be breached above decisively.

The support for the day is seen at 23600 levels, while the resistance is seen at 24300 levels. BankNifty would have the daily range of 53500-56000 levels.



\*Blue candle → Close rate > Open rate \* Red candle → Close rate < Open rate

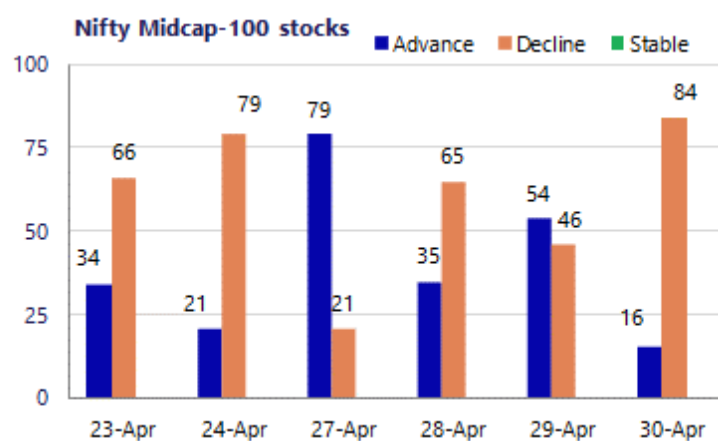
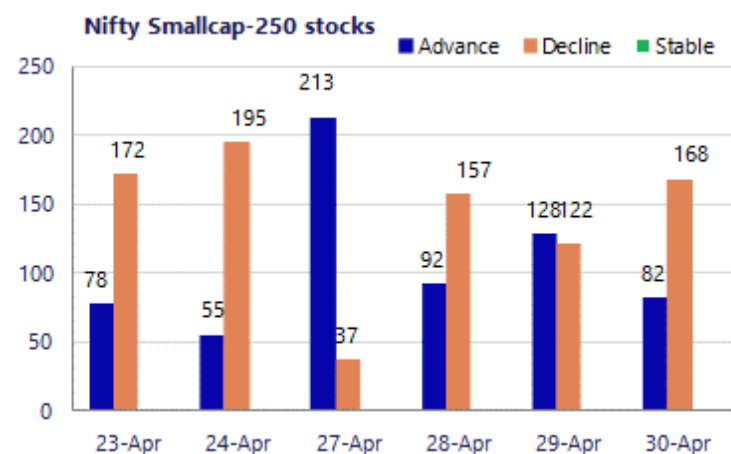
Sensex	Period	Closing	% Chng	Trend	Reversal	2 Sup	1 Sup	Pivot	1 Res	2 Res
Nifty	Daily	23997.55	-0.74%	-6	24117.70	23670	23834	23961	24124	24251
	Weekly	23997.55	0.42%	4	23066.60	23691	23844	24089	24243	24488
	Monthly	23997.55	7.46%	-4	26009.10	21175	22586	23594	25005	26013
Bank Nifty	Daily	54863.35	-0.98%	-6	55856.80	54134	54499	54805	55170	55476
	Weekly	54863.35	-2.19%	4	53420.50	54323	54593	55534	55804	56745
	Monthly	54863.35	9.13%	-2	62653.00	46590	50727	54092	58228	61593
Sensex	Daily	76913.50	-0.75%	-6	77327.60	75813	76363	76809	77359	77804
	Weekly	76913.50	0.30%	4	73991.30	75971	76442	77212	77684	78454
	Monthly	76913.50	6.90%	-4	83783.80	68121	72517	75942	80338	83763

**Gainers - Losers ( Nifty 500 Stocks )**
**Gainers**

Company Name	Last Price	% Gain	Volume
Bajaj Auto	9994	4.72%	1209189
Afcons Infra	339.70	4.06%	1274176
Anupam Rasayan	1343.8	3.79%	537286
Acutaas Chem	2,594.10	3.66%	2667887
BHEL	352.41	2.30%	17425478
Balrampur Chini	521.05	2.13%	3214780
Berger Paints	473.10	2.01%	251396

**Losers**

Company Name	Last Price	% Loss	Volume
Adani Energy	1,342.25	-5.35%	6546636
Aditya Birla Re	1486.2	-4.14%	244692
Apollo Tyres	408.40	-3.71%	1210704
Allied Blenders	531.80	-3.63%	384571
Adani Total Gas	634.70	-3.39%	3269882
APL Apollo	1905	-3.13%	724251
Authum Invest	471.8	-3.06%	176384



### Nifty Daily chart with RSI indicator



### BankNifty Daily chart with RSI indicator

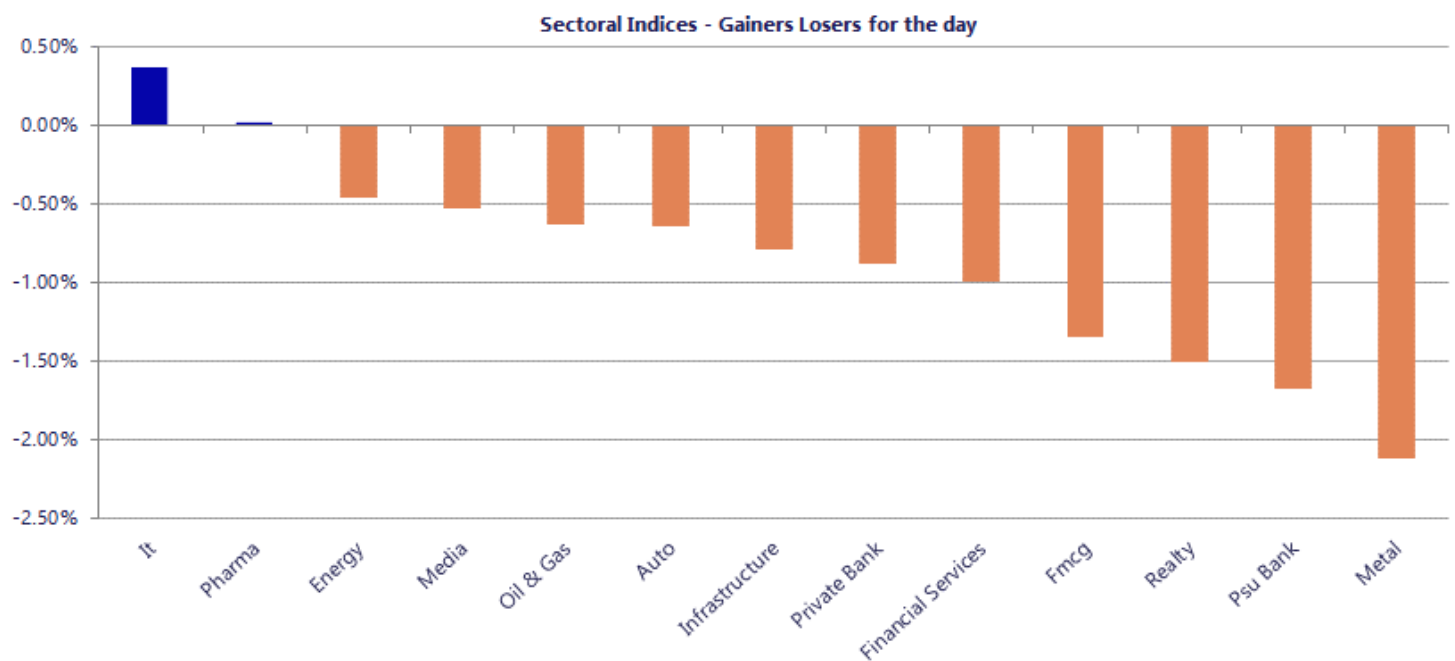


Breakouts - Cross above 200 DMA			
Company Name	LCP	Change %	200 DMA
Cemindia Proj	815.25	11.90	728.54
Inventurus Know	1654.7	5.91	1562.36
Gujarat Fluoro	3602	4.04	3462
RPG Life	2295	3.63	2214.67
Gayatri Rubbers	423.15	3.57	408.55
Balaji Amines	1333.65	2.76	1297.78
DCG Cables & Wi	67.45	2.74	65.65
IBL Finance	62	2.73	60.35
Capital SFB	279.56	2.49	272.77
Bajaj Hindustha	20.3	2.37	19.83
Rategain Travel	602.6	2.26	589.3
Regency Ceramic	46.52	2.04	45.59
Indo Count	277.36	2.02	271.87
Orient Abrasive	41.12	1.66	40.45
DCM Shriram	1227.5	1.37	1210.92
TechEra Enginee	217.9	1.09	215.54
Elecon Eng	506.65	1.08	501.23
Sanghvi Movers	319.9	1.07	316.5

\* Stocks crossing above its Simple Moving Average (200DMA)

Breakdown - Cross below 200 DMA			
Company Name	LCP	Change %	200 DMA
Chamunda Electr	45.25	-5.85	48.06
Divyadhan Recyc	35.6	-4.43	37.25
Ravindra Energy	142.91	-3.87	148.67
BGR Energy	282.04	-3.31	291.69
Blue Star	1781	-2.87	1833.66
Smartlink Net	132	-2.40	135.25
United Spirits	1325.6	-2.36	1357.58
M&M Financial	310.7	-1.89	316.7
OnMobile Global	55.27	-1.55	56.14
Guj Themis	363.58	-1.53	369.24
Swelect Energy	659.4	-1.46	669.15
JK Paper	360.25	-1.31	365.02
CAMS	738.6	-1.22	747.76
Styrenix	2260.9	-1.20	2288.32
Enviro Infra	211.94	-1.13	214.36
Atlanta	40.87	-1.07	41.31
Plastiblends	167.22	-1.04	168.98
India Cements	395.9	-1.03	400.03

\* Stocks crossing below its Simple Moving Average (200DMA)



Nifty 50 Stocks - Summary Details											
Symbol	LTP	Chng	% Chng	Volume (lacs)	Turnover (crs.)	52w High	Diff with 52w H	52w Low	Diff with 52w L	365 days % chng	30 days % chng
NIFTY 50	23997.55	-180.10	-0.74%	5053.75	44413	26373	9.01%	22183	8.18%	7.46%	-1.38%
ADANIENT	2410.50	-15.40	-0.63%	35.36	843	2617	7.87%	1753	37.51%	37.05%	7.89%
ADANIPTS	1675.50	14.40	0.87%	63.08	1031	1677	0.09%	1184	41.50%	27.65%	37.73%
APOLLOHOSP	7650.00	-59.00	-0.77%	3.92	299	8100	5.55%	6678	14.56%	3.11%	9.65%
ASIANPAINT	2450.00	2.70	0.11%	8.24	200	2986	17.94%	2115	15.84%	13.15%	1.00%
AXISBANK	1275.50	-20.90	-1.61%	164.82	2087	1418	10.07%	1043	22.35%	9.83%	7.64%
BAJAJ-AUTO	10039.00	495.50	5.19%	12.09	1187	10187	1.45%	7612	31.88%	14.32%	25.02%
BAJAJFINSV	1741.70	-22.50	-1.28%	25.74	453	2195	20.65%	1597	9.06%	6.73%	-10.76%
BAJFINANCE	939.70	9.70	1.04%	273.62	2604	1103	14.77%	788	19.27%	17.24%	8.83%
BEL	431.80	-5.75	-1.31%	157.90	678	473	8.80%	296	45.95%	7.77%	37.47%
BHARTIARTL	1891.00	2.90	0.15%	127.09	2394	2175	13.04%	1747	8.25%	6.09%	1.42%
CIPLA	1305.00	-12.60	-0.96%	13.70	180	1673	22.00%	1166	11.95%	6.60%	-15.81%
COALINDIA	481.60	1.70	0.35%	169.33	819	491	1.96%	369	30.64%	6.92%	24.99%
DRREDDY	1325.00	-4.80	-0.36%	12.27	163	1380	3.96%	1129	17.32%	5.59%	11.92%
EICHERMOT	7110.00	-79.50	-1.11%	5.38	380	8230	13.61%	5220	36.22%	7.96%	27.72%
ETERNAL	246.60	-7.43	-2.92%	726.83	1787	368	33.07%	213	15.99%	7.69%	6.06%
GRASIM	2794.00	-9.20	-0.33%	11.30	313	2979	6.21%	2503	11.65%	9.24%	2.06%
HCLTECH	1201.40	1.20	0.10%	50.69	609	1780	32.51%	1184	1.47%	-10.45%	-23.36%
HDFCBANK	774.75	-4.25	-0.55%	479.97	3698	1021	24.08%	727	6.62%	5.91%	-19.51%
HDFCLIFE	589.00	-5.40	-0.91%	62.34	364	821	28.24%	555	6.11%	-0.27%	-20.80%
HINDALCO	1037.00	-30.20	-2.83%	43.92	459	1080	3.98%	604	71.76%	17.25%	66.01%
HINDUNILVR	2254.00	-60.40	-2.61%	44.35	1011	2750	18.04%	2023	11.45%	9.67%	-3.76%
ICICIBANK	1265.70	-15.30	-1.19%	177.40	2244	1500	15.62%	1188	6.58%	4.96%	-11.30%
INDIGO	4300.00	-45.20	-1.04%	20.10	854	6233	31.01%	3895	10.39%	9.04%	-18.09%
INFY	1182.60	15.10	1.29%	122.05	1438	1728	31.56%	1150	2.85%	-5.44%	-21.17%
ITC	315.20	-1.05	-0.33%	114.79	362	444	29.04%	287	9.83%	9.56%	-25.97%
JIOFIN	247.18	-3.53	-1.41%	205.90	506	339	27.00%	223	10.69%	10.30%	-5.08%
JSWSTEEL	1262.90	-16.80	-1.31%	13.66	172	1307	3.36%	935	35.07%	12.51%	22.64%
KOTAKBANK	383.75	1.75	0.46%	248.12	947	453	15.32%	346	11.07%	8.59%	-13.10%
LT	4021.00	-75.10	-1.83%	25.69	1031	4440	9.44%	3255	23.54%	14.75%	20.35%
M&M	3094.20	-58.10	-1.84%	33.31	1027	3840	19.42%	2882	7.35%	4.72%	5.65%
MARUTI	13320.00	63.00	0.48%	6.13	806	17370	23.32%	11289	17.99%	8.24%	8.67%
MAXHEALTH	992.00	-14.60	-1.45%	23.66	234	1314	24.52%	903	9.86%	3.09%	-9.67%
NESTLEIND	1463.80	-1.80	-0.12%	23.06	336	1470	0.42%	1085	34.95%	24.60%	22.59%
NTPC	399.90	-1.40	-0.35%	77.06	306	414	3.50%	316	26.73%	7.89%	12.79%
ONGC	298.80	-2.60	-0.86%	174.86	526	308	2.83%	228	30.79%	4.97%	22.23%
POWERGRID	319.00	-1.35	-0.42%	95.21	303	325	1.83%	250	27.60%	7.73%	3.76%
RELIANCE	1436.00	10.60	0.74%	309.57	4385	1612	10.91%	1290	11.32%	6.85%	2.21%
SBILIFE	1820.00	3.80	0.21%	10.82	196	2132	14.63%	1681	8.24%	2.40%	3.07%
SBIN	1071.95	-14.95	-1.38%	142.69	1526	1235	13.18%	756	41.89%	9.45%	35.92%
SHRIRAMFIN	938.50	-18.35	-1.92%	59.89	559	1108	15.30%	567	65.67%	7.61%	53.42%
SUNPHARMA	1810.00	31.30	1.76%	47.50	852	1851	2.23%	1548	16.93%	3.00%	-1.22%
TATACONSUM	1147.70	-20.30	-1.74%	14.33	164	1221	6.00%	1007	13.95%	13.10%	-1.55%
TATASTEEL	211.40	-4.48	-2.08%	248.75	526	218	3.13%	138	53.19%	10.18%	50.91%
TCS	2474.80	0.10	#VALUE!	39.70	981	3631	31.83%	2346	5.48%	4.91%	-28.34%
TECHM	1473.80	14.00	0.96%	26.35	387	1854	20.51%	1304	13.01%	6.49%	-1.94%
TITAN	4388.00	-51.80	-1.17%	8.69	381	4554	3.65%	3246	35.20%	11.05%	29.83%
TMPV	342.40	-10.30	-2.92%	126.68	433	744	53.98%	294	16.34%	15.60%	-46.85%
TRENT	4148.00	-80.30	-1.90%	5.67	236	6261	33.75%	3276	26.64%	25.86%	-19.81%
ULTRACEMCO	11597.00	-236.00	-1.99%	7.20	832	13110	11.54%	10325	12.32%	7.93%	-0.38%
WIPRO	201.20	0.52	0.26%	153.00	308	273	26.33%	187	7.88%	7.23%	-16.69%

## Disclaimer / Disclosures

### ANALYST CERTIFICATION

I, Mrs. Vaishali Parekh B.com, Research Analyst, author and the name subscribed to this report, hereby certify that all of the views expressed in this research report accurately reflect our views about the subject issuer(s) or securities. We also certify that no part of our compensation was, is, or will be directly or indirectly related to the specific recommendation(s) or view(s) in this report.

Terms & conditions and other disclosures:

Prabhudas Lilladher Pvt. Ltd, Mumbai, India (hereinafter referred to as "PL") is engaged in the business of Stock Broking, Portfolio Manager, Depository Participant and distribution for third party financial products. PL is a subsidiary of Prabhudas Lilladher Advisory Services Pvt Ltd. which has its various subsidiaries engaged in business of commodity broking, investment banking, financial services (margin funding) and distribution of third party financial/other products, details in respect of which are available at [www.plindia.com](http://www.plindia.com)

This document has been prepared by the Research Division of PL and is meant for use by the recipient only as information and is not for circulation. This document is not to be reported or copied or made available to others without prior permission of PL. It should not be considered or taken as an offer to sell or a solicitation to buy or sell any security.

The information contained in this report has been obtained from sources that are considered to be reliable. However, PL has not independently verified the accuracy or completeness of the same. Neither PL nor any of its affiliates, its directors or its employees accepts any responsibility of whatsoever nature for the information, statements and opinion given, made available or expressed herein or for any omission therein.

Recipients of this report should be aware that past performance is not necessarily a guide to future performance and value of investments can go down as well. The suitability or otherwise of any investments will depend upon the recipient's particular circumstances and, in case of doubt, advice should be sought from an independent expert/advisor.

Either PL or its affiliates or its directors or its employees or its representatives or its clients or their relatives may have position(s), make market, act as principal or engage in transactions of securities of companies referred to in this report and they may have used the research material prior to publication.

PL may from time to time solicit or perform investment banking or other services for any company mentioned in this document.

PL is registered as Research Analyst under Securities and Exchange Board of India (Research Analysts) Regulations, 2014 PL submits that no material disciplinary action has been taken on us by any Regulatory Authority impacting Equity Research Analysis activities.

PL or its research analysts or its associates or his relatives do not have any financial interest in the subject company.

PL or its research analysts or its associates or his relatives do not have actual/beneficial ownership of one per cent or more securities of the subject company at the end of the month immediately preceding the date of publication of the research report.

PL or its research analysts or its associates or his relatives do not have any material conflict of interest at the time of publication of the research report.

PL or its associates might have received compensation from the subject company in the past twelve months.

PL or its associates might have managed or co-managed public offering of securities for the subject company in the past twelve months or mandated by the subject company for any other assignment in the past twelve months.

PL or its associates might have received any compensation for investment banking or merchant banking or brokerage services from the subject company in the past twelve months.

PL or its associates might have received any compensation for products or services other than investment banking or merchant banking or brokerage services from the subject company in the past twelve months PL or its associates might have received any compensation or other benefits from the subject company or third party in connection with the research report.

PL encourages independence in research report preparation and strives to minimize conflict in preparation of research report. PL or its analysts did not receive any compensation or other benefits from the subject Company or third party in connection with the preparation of the research report. PL or its Research Analysts do not have any material conflict of interest at the time of publication of this report.

It is confirmed that Mrs. Vaishali Parekh B.com, Research Analyst of this report has not received any compensation from the companies mentioned in the report in the preceding twelve months compensation of our Research Analysts is not based on any specific merchant banking, investment banking or brokerage service transactions.

The Research analysts for this report certifies that all of the views expressed in this report accurately reflect his or her personal views about the subject company or companies and its or their securities, and no part of his or her compensation was, is or will be, directly or indirectly related to specific recommendations or views expressed in this report.

The research analysts for this report has not served as an officer, director or employee of the subject company PL or its research analysts have not engaged in market making activity for the subject company

Our sales people, traders, and other professionals or affiliates may provide oral or written market commentary or trading strategies to our clients that reflect opinions that are contrary to the opinions expressed herein, and our proprietary trading and investing businesses may make investment decisions that are inconsistent with the recommendations expressed herein. In reviewing these materials, you should be aware that any or all of the foregoing, among other things, may give rise to real or potential conflicts of interest.

PL and its associates, their directors and employees may (a) from time to time, have a long or short position in, and buy or sell the securities of the subject company or (b) be engaged in any other transaction involving such securities and earn brokerage or other compensation or act as a market maker in the financial instruments of the subject company or act as an advisor or lender/borrower to the subject company or may have any other potential conflict of interests with respect to any recommendation and other related information and opinions.

**Regd. Office:** 3<sup>rd</sup> Floor, Sadhana House, 570, P. B. Marg, Behind Mahindra Tower, Worli, Mumbai - 400 018, India.