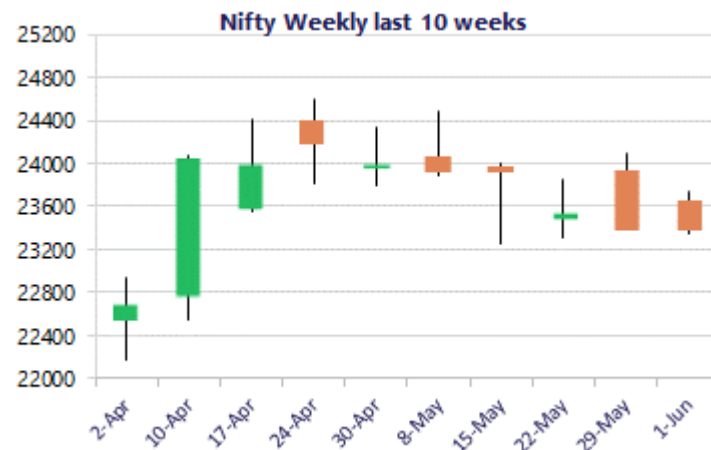
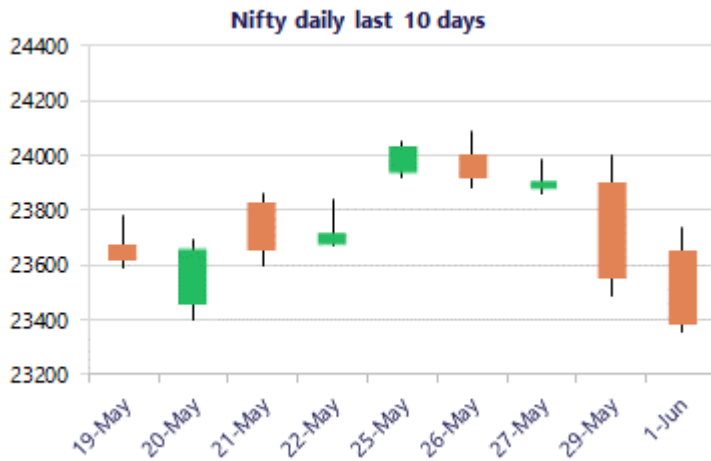


* Sensex 74267.34 - 508.40

* Nifty 23382.60 - 165.15

* Bank Nifty 53643.10 - 596.10



*Blue candle → Close rate > Open rate * Red candle → Close rate < Open rate

Nifty ends below 23400 with weak bias

Nifty slipped further with profit booking dragging the index below the 23400 zone with bias and sentiment getting weak on the back of geo-political tensions once again looming around. BankNifty erased the gains further losing almost 600 points to weaken the bias and closed near the 53600 zone. The market breadth was weak with the advance decline indicating a ratio of 1:2 at close.

Market Forecast

Nifty daily range 23200 - 23600

Nifty witnessed heavy profit booking for the second consecutive session to close below the 23400-zone weakening the bias once again and would need to sustain the important near-term support of 23200 zone to maintain the overall bias intact. The index had found resistance near the 50EMA at 24000 zone and has formed a lower top pattern on the daily chart to weaken the sentiment with the geo-political tensions once again getting triggered among the market players.

BankNifty slipped down further to close near the 53600 level with bias turning weak and the sentiment maintained with a cautious approach once again with the 53000-zone positioned as the important support for the coming sessions which needs to be sustained. The index has formed a lower top pattern finding resistance near the 50EMA zone at 55300 level and with profit booking witnessed has erased the gains in the last 3 sessions.

The support for the day is seen at 23200 levels, while the resistance is seen at 23600 levels. BankNifty would have the daily range of 52800-54200 levels.

Sensex	Period	Closing	% Chng	Trend	Reversal	2 Sup	1 Sup	Pivot	1 Res	2 Res
Nifty	Daily	23382.60	-0.70%	-2	23687.70	23116	23249	23491	23625	23867
	Weekly	23547.75	-0.72%	-1	23765.95	23102	23325	23707	23930	24312
	Monthly	23547.75	-1.87%	-5	25345.55	22545	23046	23764	24266	24984
Bank Nifty	Daily	53643.10	-1.10%	-1	54279.30	52786	53214	53899	54327	55011
	Weekly	54239.20	0.34%	-3	54624.70	53210	53725	54631	55145	56051
	Monthly	54239.20	-1.14%	-3	60590.40	50902	52570	54452	56121	58003
Sensex	Daily	74267.34	-0.68%	-2	75123.30	73449	73858	74613	75022	75777
	Weekly	74775.74	-0.85%	-2	75674.50	73293	74034	75331	76072	77369
	Monthly	74775.74	-2.78%	-5	81359.20	71515	73145	75765	77395	80015

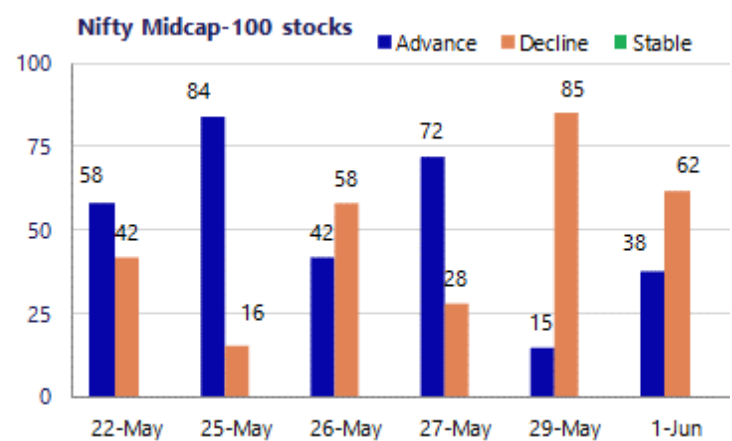
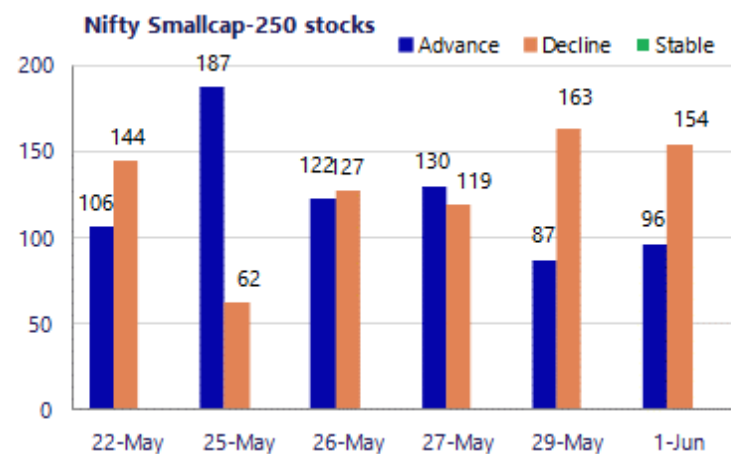
Gainers - Losers (Nifty 500 Stocks)

Gainers

Company Name	Last Price	% Gain	Volume
PTC Industries	18489	14.19%	275968
NMDC Steel	50.50	13.18%	125427476
Saregama India	459.75	8.39%	18131508
Aditya Infotech	3,126.00	7.66%	1721755
Wockhardt	2,152.90	5.98%	11806406
Welspun Living	145.13	5.19%	6513894
NMDC	92.37	4.98%	73822842

Losers

Company Name	Last Price	% Loss	Volume
Jaiprakash Pow	18.79	-14.08%	504618192
Finolex Cables	989.7	-12.90%	1985465
RHI Magnesita	365.20	-10.18%	2079686
Inox Wind	83.84	-9.87%	52246914
JM Financial	118.75	-8.91%	9371443
Natco Pharma	933.3	-8.13%	2935320
GE Vernova TD	4755	-7.64%	1353247



Nifty Daily chart with RSI indicator



BankNifty Daily chart with RSI indicator



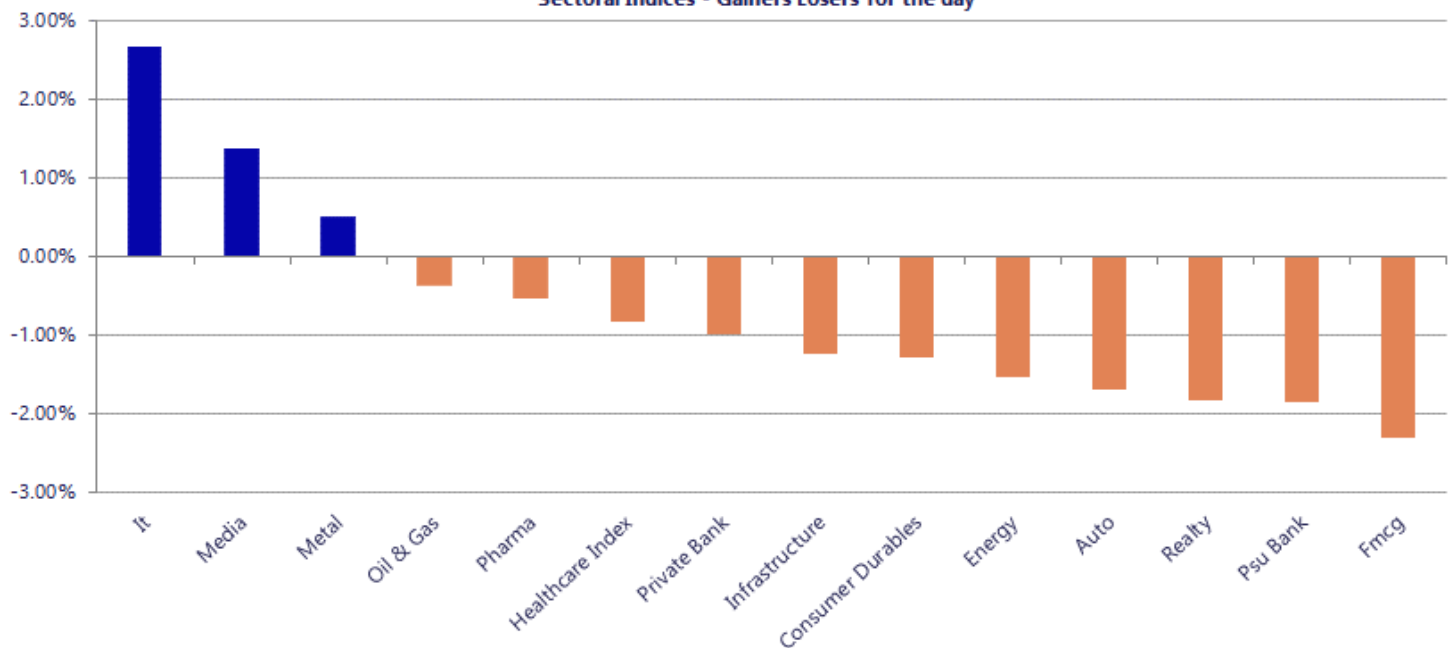
Breakouts - Cross above 200 DMA			
Company Name	LCP	Change %	200 DMA
Deem Roll-Tech	55.85	14.17	48.92
PTC Industries	18489	10.84	16680.77
Morepen Lab	46.51	6.77	43.56
Vadilal Ind	5259.4	6.52	4937.42
Bafna Pharma	138.49	4.71	132.26
Tera Software	414.15	3.63	399.64
Tech Mahindra	1543.2	3.32	1493.65
Holmarc Opto Me	107.45	2.99	104.33
Asahi Songwon	258.58	1.70	254.27
Hariom Pipe	402.15	1.59	395.85
NBCC (India)	104.4	1.41	102.95
IZMO	788.4	1.40	777.48
Donear Ind	94.68	1.25	93.51
Kajaria Ceramic	1101.7	1.15	1089.19
Travel Food Ser	1245	1.10	1231.49
Umiya Buildcon	87.16	1.08	86.23
Beardsell	29.27	1.07	28.96
NRB Industrial	30.13	0.94	29.85

* Stocks crossing above its Simple Moving Average (200DMA)

Breakdown - Cross below 200 DMA			
Company Name	LCP	Change %	200 DMA
Kontor Space	60.45	-15.57	71.6
DCG Cables & Wires	57.9	-11.58	65.48
Nureca	240.05	-10.41	267.93
Maan Aluminium	127.28	-6.82	136.59
Thaai Casting	97.95	-5.87	104.06
Manaksia	60.11	-4.89	63.2
Simplex Infra	238.25	-4.04	248.27
Amines Plast	182.46	-3.64	189.35
Kothari Product	72.95	-3.62	75.69
Ginni Filaments	40.58	-3.43	42.02
Indostar Capita	225.57	-3.36	233.41
Prozone Intu	50.79	-3.33	52.54
Finolex Ind	177.97	-3.10	183.67
TVS Supply	112.53	-2.99	116
Revathi Equipme	740.5	-2.81	761.89
Orient Electric	182.79	-2.71	187.88
Sree Rayalaseem	505.35	-2.70	519.39
Goa Carbon	390.85	-2.66	401.52

* Stocks crossing below its Simple Moving Average (200DMA)

Sectoral Indices - Gainers Losers for the day



Nifty 50 Stocks - Summary Details											
Symbol	LTP	Chng	% Chng	Volume (lacs)	Turnover (crs.)	52w High	Diff with 52w H	52w Low	Diff with 52w L	365 days % chng	30 days % chng
NIFTY 50	23382.60	-165.15	-0.70%	4216.91	33844	26373	11.34%	22183	5.41%	-2.56%	-5.53%
ADANIENT	2908.00	-29.40	-1.00%	16.29	475	3028	3.95%	1753	65.89%	20.74%	18.86%
ADANIPTS	1783.00	-21.60	-1.20%	12.25	220	1843	3.25%	1291	38.16%	7.58%	24.44%
APOLLOHOSP	8081.00	-95.50	-1.17%	2.17	178	8443	4.29%	6697	20.67%	5.82%	17.45%
ASIANPAINT	2636.00	-35.60	-1.33%	22.24	602	2986	11.71%	2115	24.63%	7.83%	16.68%
AXISBANK	1277.50	-9.10	-0.71%	43.11	550	1418	9.93%	1043	22.54%	0.73%	7.15%
BAJAJ-AUTO	10380.00	-80.00	-0.76%	4.26	447	10834	4.19%	7859	32.09%	3.86%	20.60%
BAJAJFINSV	1760.60	-23.00	-1.29%	4.00	71	2195	19.79%	1597	10.24%	0.77%	-12.73%
BAJFINANCE	890.00	-18.25	-2.01%	68.88	617	1103	19.27%	788	12.96%	-5.02%	-3.06%
BEL	407.30	-3.45	-0.84%	164.53	670	473	13.97%	361	12.76%	-5.56%	5.90%
BHARTIARTL	1807.00	-22.00	-1.20%	63.92	1160	2175	16.90%	1741	3.82%	-4.23%	-2.65%
CIPLA	1394.00	-7.00	-0.50%	7.15	100	1673	16.68%	1166	19.58%	6.44%	-4.89%
COALINDIA	473.25	15.35	3.35%	477.17	2236	491	3.66%	369	28.37%	-1.70%	19.12%
DRREDDY	1286.50	-17.00	-1.30%	13.79	178	1380	6.76%	1148	12.03%	-2.75%	2.82%
EICHERMOT	7099.00	-78.00	-1.09%	6.01	428	8230	13.74%	5220	36.01%	-0.14%	33.10%
ETERNAL	248.30	-2.30	-0.92%	191.30	477	368	32.61%	213	16.79%	0.51%	4.19%
GRASIM	3099.30	-23.10	-0.74%	6.44	200	3198	3.07%	2503	23.85%	10.91%	21.74%
HCLTECH	1194.10	10.30	0.87%	59.70	717	1780	32.92%	1103	8.22%	-0.42%	-27.04%
HDFCBANK	742.50	-2.05	-0.28%	479.96	3570	1021	27.24%	727	2.18%	-3.78%	-23.65%
HDFCLIFE	585.10	-9.70	-1.63%	31.64	187	821	28.71%	555	5.40%	-0.31%	-24.68%
HINDALCO	1142.00	15.30	1.36%	69.35	790	1176	2.89%	618	84.79%	10.02%	80.27%
HINDUNILVR	2091.80	-61.70	-2.87%	14.70	310	2750	23.93%	2023	3.43%	-7.07%	-10.92%
ICICIBANK	1238.60	-17.80	-1.42%	99.12	1234	1500	17.43%	1188	4.29%	-1.96%	-14.33%
INDIGO	4460.00	55.00	1.25%	16.66	752	6233	28.44%	3895	14.50%	3.83%	-16.32%
INFY	1203.50	42.60	3.67%	194.39	2343	1728	30.35%	1089	10.51%	1.84%	-22.99%
ITC	279.30	-7.60	-2.65%	234.78	664	429	34.83%	278	0.36%	-11.31%	-33.19%
JIOFIN	234.90	-4.05	-1.69%	108.54	257	339	30.63%	223	5.19%	-4.66%	-18.05%
JSWSTEEL	1300.60	22.60	1.77%	13.88	180	1328	2.06%	962	35.18%	2.85%	30.91%
KOTAKBANK	378.00	-6.20	-1.61%	123.36	468	453	16.59%	346	9.41%	-1.38%	-8.90%
LT	4012.00	-64.50	-1.58%	14.09	569	4440	9.64%	3288	22.02%	-0.05%	9.17%
M&M	2970.00	-75.60	-2.48%	57.63	1726	3840	22.65%	2896	2.56%	-4.12%	-0.23%
MARUTI	12930.00	-197.00	-1.50%	2.95	386	17370	25.56%	12016	7.61%	-2.88%	4.96%
MAXHEALTH	943.00	-22.10	-2.29%	38.42	364	1314	28.25%	903	4.43%	-5.04%	-16.19%
NESTLEIND	1395.00	-26.50	-1.86%	8.44	118	1498	6.88%	1085	28.61%	-4.36%	16.43%
NTPC	378.00	-8.90	-2.30%	184.09	700	414	8.78%	316	19.79%	-5.30%	13.21%
ONGC	264.05	-1.35	-0.51%	90.96	241	308	14.13%	229	15.50%	-11.85%	10.30%
POWERGRID	285.00	-5.55	-1.91%	176.28	506	325	12.29%	250	14.00%	-10.48%	-1.64%
RELIANCE	1320.20	-1.00	-0.08%	107.01	1417	1612	18.09%	1290	2.34%	-7.73%	-7.09%
SBILIFE	1803.20	-26.90	-1.47%	19.91	362	2132	15.42%	1720	4.84%	-0.87%	-0.50%
SBIN	954.50	-9.90	-1.03%	111.19	1067	1235	22.69%	782	22.11%	-10.66%	17.51%
SHRIRAMFIN	923.00	-24.15	-2.55%	83.09	768	1108	16.70%	567	62.93%	-1.53%	44.37%
SUNPHARMA	1790.00	-9.20	-0.51%	20.51	369	1917	6.61%	1548	15.63%	-1.01%	6.70%
TATACONSUM	1145.00	-33.40	-2.83%	20.75	239	1283	10.74%	1007	13.68%	0.03%	3.50%
TATASTEEL	210.40	2.38	1.14%	237.33	497	224	6.24%	150	40.45%	-0.45%	30.67%
TCS	2296.40	37.50	1.66%	75.05	1727	3538	35.09%	2206	4.08%	-7.17%	-33.70%
TECHM	1539.00	55.10	3.71%	52.43	810	1854	16.99%	1304	18.01%	4.45%	-2.22%
TITAN	4010.00	-64.90	-1.59%	4.50	182	4605	12.92%	3303	21.40%	-8.56%	12.80%
TMPV	385.25	-8.65	-2.20%	86.27	336	744	48.22%	294	30.90%	12.79%	-46.46%
TRENT	4153.00	-71.00	-1.68%	6.52	274	6261	33.67%	3276	26.79%	0.20%	-26.41%
ULTRACEMCO	11242.00	-240.00	-2.09%	4.98	562	13110	14.25%	10325	8.88%	-2.97%	0.29%
WIPRO	206.51	2.26	1.11%	264.91	547	273	24.38%	187	10.73%	2.92%	-17.29%

Disclaimer / Disclosures

ANALYST CERTIFICATION

I, Mrs. Vaishali Parekh B.com, Research Analyst, author and the name subscribed to this report, hereby certify that all of the views expressed in this research report accurately reflect our views about the subject issuer(s) or securities. We also certify that no part of our compensation was, is, or will be directly or indirectly related to the specific recommendation(s) or view(s) in this report.

Terms & conditions and other disclosures:

Prabhudas Lilladher Pvt. Ltd, Mumbai, India (hereinafter referred to as "PL") is engaged in the business of Stock Broking, Portfolio Manager, Depository Participant and distribution for third party financial products. PL is a subsidiary of Prabhudas Lilladher Advisory Services Pvt Ltd. which has its various subsidiaries engaged in business of commodity broking, investment banking, financial services (margin funding) and distribution of third party financial/other products, details in respect of which are available at www.plindia.com

This document has been prepared by the Research Division of PL and is meant for use by the recipient only as information and is not for circulation. This document is not to be reported or copied or made available to others without prior permission of PL. It should not be considered or taken as an offer to sell or a solicitation to buy or sell any security.

The information contained in this report has been obtained from sources that are considered to be reliable. However, PL has not independently verified the accuracy or completeness of the same. Neither PL nor any of its affiliates, its directors or its employees accepts any responsibility of whatsoever nature for the information, statements and opinion given, made available or expressed herein or for any omission therein.

Recipients of this report should be aware that past performance is not necessarily a guide to future performance and value of investments can go down as well. The suitability or otherwise of any investments will depend upon the recipient's particular circumstances and, in case of doubt, advice should be sought from an independent expert/advisor.

Either PL or its affiliates or its directors or its employees or its representatives or its clients or their relatives may have position(s), make market, act as principal or engage in transactions of securities of companies referred to in this report and they may have used the research material prior to publication.

PL may from time to time solicit or perform investment banking or other services for any company mentioned in this document.

PL is registered as Research Analyst under Securities and Exchange Board of India (Research Analysts) Regulations, 2014 PL submits that no material disciplinary action has been taken on us by any Regulatory Authority impacting Equity Research Analysis activities.

PL or its research analysts or its associates or his relatives do not have any financial interest in the subject company.

PL or its research analysts or its associates or his relatives do not have actual/beneficial ownership of one per cent or more securities of the subject company at the end of the month immediately preceding the date of publication of the research report.

PL or its research analysts or its associates or his relatives do not have any material conflict of interest at the time of publication of the research report.

PL or its associates might have received compensation from the subject company in the past twelve months.

PL or its associates might have managed or co-managed public offering of securities for the subject company in the past twelve months or mandated by the subject company for any other assignment in the past twelve months.

PL or its associates might have received any compensation for investment banking or merchant banking or brokerage services from the subject company in the past twelve months.

PL or its associates might have received any compensation for products or services other than investment banking or merchant banking or brokerage services from the subject company in the past twelve months PL or its associates might have received any compensation or other benefits from the subject company or third party in connection with the research report.

PL encourages independence in research report preparation and strives to minimize conflict in preparation of research report. PL or its analysts did not receive any compensation or other benefits from the subject Company or third party in connection with the preparation of the research report. PL or its Research Analysts do not have any material conflict of interest at the time of publication of this report.

It is confirmed that Mrs. Vaishali Parekh B.com, Research Analyst of this report has not received any compensation from the companies mentioned in the report in the preceding twelve months compensation of our Research Analysts is not based on any specific merchant banking, investment banking or brokerage service transactions.

The Research analysts for this report certifies that all of the views expressed in this report accurately reflect his or her personal views about the subject company or companies and its or their securities, and no part of his or her compensation was, is or will be, directly or indirectly related to specific recommendations or views expressed in this report.

The research analysts for this report has not served as an officer, director or employee of the subject company PL or its research analysts have not engaged in market making activity for the subject company

Our sales people, traders, and other professionals or affiliates may provide oral or written market commentary or trading strategies to our clients that reflect opinions that are contrary to the opinions expressed herein, and our proprietary trading and investing businesses may make investment decisions that are inconsistent with the recommendations expressed herein. In reviewing these materials, you should be aware that any or all of the foregoing, among other things, may give rise to real or potential conflicts of interest.

PL and its associates, their directors and employees may (a) from time to time, have a long or short position in, and buy or sell the securities of the subject company or (b) be engaged in any other transaction involving such securities and earn brokerage or other compensation or act as a market maker in the financial instruments of the subject company or act as an advisor or lender/borrower to the subject company or may have any other potential conflict of interests with respect to any recommendation and other related information and opinions.

Regd. Office: 3rd Floor, Sadhana House, 570, P. B. Marg, Behind Mahindra Tower, Worli, Mumbai - 400 018, India.