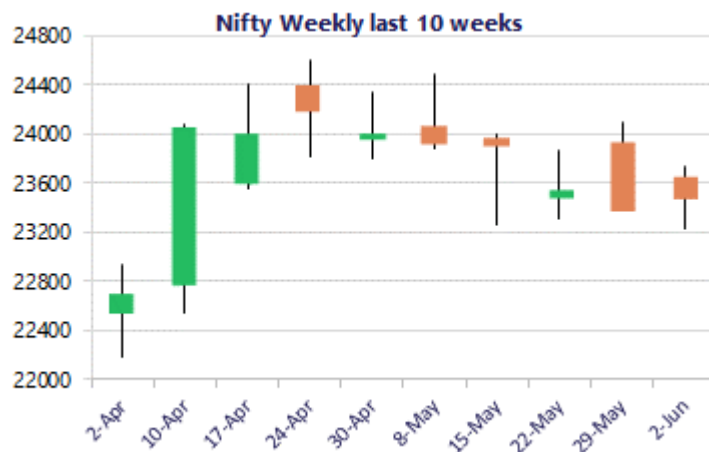
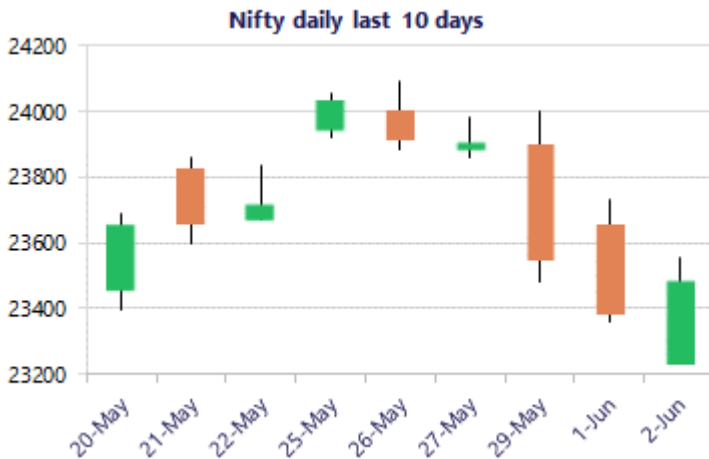


* Sensex 74649.84 + 382.50

* Nifty 23483.55 + 100.95

* Bank Nifty 53714.65 + 71.55



*Blue candle → Close rate > Open rate * Red candle → Close rate < Open rate

Nifty recovers to end in the green

Nifty after witnessing a weak session managed to stage a good recovery and closed near the 23500 zone with bias still maintained with a cautious approach. BankNifty managed to hold on to the important support zone of 53500 level and witness some revival to end in the green with sentiment still maintained with a cautious approach. The market breadth was positive with the advance decline indicating a ratio of 3:2 at close.

Market Forecast

Nifty daily range 23300 - 23700

Nifty witnessed a weak opening session and with support maintained near the 23250 zone, indicated a strong revival to end in the green near 23500 zone with active participation from the frontline IT stocks helped the index to gain. The index has been moving within a range having the resistance near the 50EMA zone at 24000 level which needs to be breached decisively to trigger for fresh upward move while on the downside, the 23200 zone is maintained as a good support which needs to be sustained as of now.

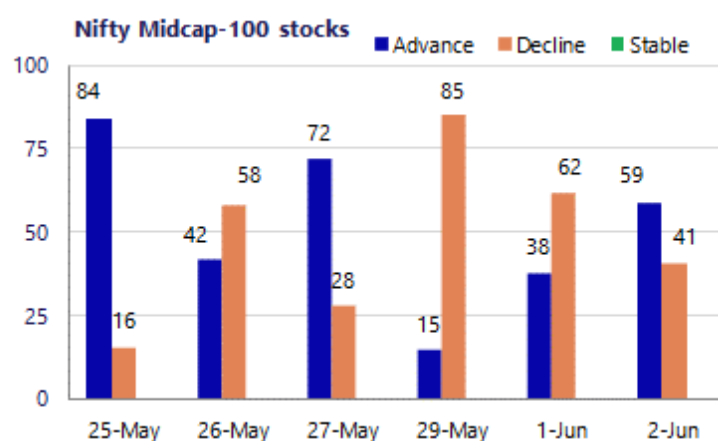
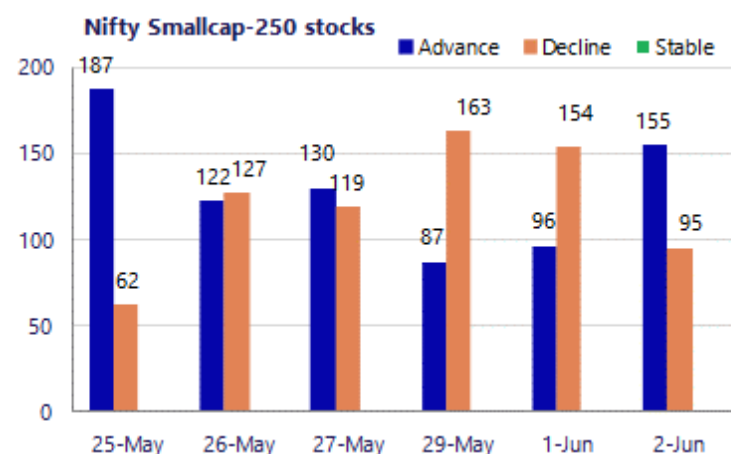
BankNifty has maintained the good support zone near the 53000 zone and once again during the intraday session witnessed a decent recovery to end marginally in the green near the 53700 zone with bias still maintained with a cautious approach. The upside is capped near the tough resistance barrier of 55400 zone which needs to be breached above decisively in the coming days to establish conviction.

The support for the day is seen at 23300 levels, while the resistance is seen at 23700 levels. BankNifty would have the daily range of 53000-54500 levels.

Sensex	Period	Closing	% Chng	Trend	Reversal	2 Sup	1 Sup	Pivot	1 Res	2 Res
	Daily	23483.55	0.43%	-3	23657.00	23095	23289	23423	23617	23751
Nifty	Weekly	23547.75	-0.72%	-1	23765.95	23102	23325	23707	23930	24312
	Monthly	23547.75	-1.87%	-5	25345.55	22545	23046	23764	24266	24984
Bank Nifty	Daily	53714.65	0.13%	-2	54297.25	52778	53246	53590	54058	54402
	Weekly	54239.20	0.34%	-3	54624.70	53210	53725	54631	55145	56051
	Monthly	54239.20	-1.14%	-3	60590.40	50902	52570	54452	56121	58003
Sensex	Daily	74649.84	0.52%	-3	75073.65	73395	74023	74442	75070	75489
	Weekly	74775.74	-0.85%	-2	75674.50	73293	74034	75331	76072	77369
	Monthly	74775.74	-2.78%	-5	81359.20	71515	73145	75765	77395	80015

Gainers - Losers (Nifty 500 Stocks)

Gainers				Losers			
Company Name	Last Price	% Gain	Volume	Company Name	Last Price	% Loss	Volume
Newgen Software	518.1	17.35%	35273385	Wockhardt	1,966.20	-8.67%	6165675
Concord Biotech	1,166.20	9.88%	1858063	NHPC	72.29	-6.36%	212433185
ACME Solar	334.75	8.97%	12451703	Force Motors	17,833.00	-5.67%	258809
JM Financial	129.16	8.77%	18600489	RHI Magnesita	344.65	-5.63%	2911257
Hexaware Tech	549.65	6.89%	1708944	Schneider Infra	1,181.30	-4.99%	255152
IFCI	71.64	6.58%	105743147	New India Assur	149.32	-4.90%	1848048
TCS	2,446.90	6.51%	11306127	Physicswallah	96.79	-4.41%	5518100



Nifty Daily chart with RSI indicator



BankNifty Daily chart with RSI indicator



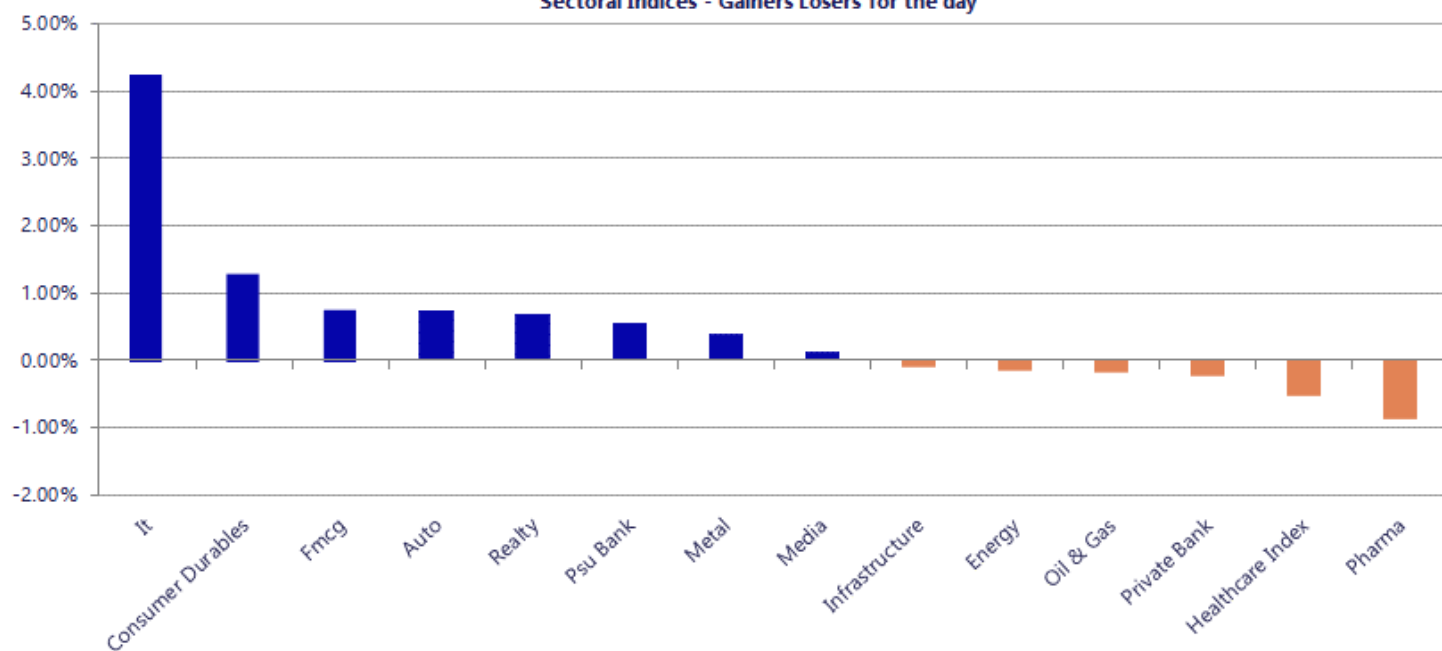
Breakouts - Cross above 200 DMA			
Company Name	LCP	Change %	200 DMA
Synergy Green I	591.9	11.58	530.48
DCM	94.11	7.74	87.35
InfoBeans Tech	178.35	7.55	165.83
Amines Plast	202.46	7.05	189.12
Ideal Technopla	187.95	5.61	177.96
Ginni Filaments	44.2	5.34	41.96
Alkyl Amines	1778.7	5.24	1690.18
Unimech Aerospa	993.15	4.20	953.09
STEL Holdings	485.4	4.19	465.87
TITAGARH	834.4	3.86	803.42
Responsive Ind	189.39	3.68	182.67
Vaibhav Global	234.74	2.74	228.48
Spandana Sphoor	255.3	2.70	248.6
NIIT	89.59	2.69	87.24
Datamatics Glob	834.75	2.55	813.96
Hindustan Media	74.39	2.54	72.55
Amiable Logisti	79.95	2.51	77.99
Fine Organics	4586.5	1.77	4506.66

* Stocks crossing above its Simple Moving Average (200DMA)

Breakdown - Cross below 200 DMA			
Company Name	LCP	Change %	200 DMA
Lambodhara Text	112.26	-4.62	117.7
Onyx Biotec	38	-4.33	39.72
Jainam Ferro	238	-3.58	246.83
Purple United	378.3	-3.23	390.92
Pansari Develop	274.8	-2.69	282.39
Globe Internati	40.23	-2.61	41.31
Healthcare Glob	631.65	-2.07	645.03
Butterfly	651.05	-2.04	664.58
Ingersoll Rand	3728.7	-1.74	3794.61
Greenchef	55.55	-1.44	56.36
Zee Entertain	94.32	-1.42	95.68
Power Grid Corp	282.15	-1.30	285.86
EPL	210.42	-1.23	213.04
Chembond Materi	159.9	-1.06	161.62
City Union Bank	249.6	-0.96	252.01
Ujjivan Small	53.18	-0.91	53.67
Holmarc Opto Me	103.25	-0.82	104.1
Rajshree Sugars	34.57	-0.69	34.81

* Stocks crossing below its Simple Moving Average (200DMA)

Sectoral Indices - Gainers Losers for the day



Nifty 50 Stocks - Summary Details											
Symbol	LTP	Chng	% Chng	Volume (lacs)	Turnover (crs.)	52w High	Diff with 52w H	52w Low	Diff with 52w L	365 days % chng	30 days % chng
NIFTY 50	23483.55	100.95	0.43%	5118.53	43063	26373	10.96%	22183	5.86%	-2.14%	-4.99%
ADANIEN	2972.00	62.60	2.15%	20.67	603	3028	1.83%	1753	69.54%	23.40%	21.53%
ADANIPTS	1813.10	29.60	1.66%	22.57	404	1843	1.61%	1291	40.50%	9.40%	23.51%
APOLLOHOSP	8120.00	11.50	0.14%	5.56	446	8443	3.83%	6697	21.26%	6.33%	17.42%
ASIANPAINT	2657.30	24.90	0.95%	10.26	271	2986	11.00%	2115	25.64%	8.71%	17.23%
AXISBANK	1253.40	-22.50	-1.76%	118.85	1492	1418	11.63%	1043	20.23%	-1.17%	4.94%
BAJAJ-AUTO	10275.00	-101.00	-0.97%	4.04	417	10834	5.16%	7859	30.75%	2.81%	20.69%
BAJAJFINSV	1749.20	-9.70	-0.55%	10.04	174	2195	20.31%	1597	9.53%	0.11%	-13.79%
BAJFINANCE	884.10	-4.95	-0.56%	156.98	1370	1103	19.81%	788	12.21%	-5.65%	-3.04%
BEL	409.60	2.40	0.59%	150.05	607	473	13.49%	361	13.40%	-5.03%	5.70%
BHARTIARTL	1816.00	5.40	0.30%	107.91	1940	2175	16.49%	1741	4.34%	-3.75%	-2.05%
CIPLA	1384.00	-6.30	-0.45%	22.91	314	1673	17.27%	1166	18.73%	5.68%	-5.86%
COALINDIA	471.10	-1.50	-0.32%	249.33	1173	491	4.10%	369	27.79%	-2.15%	17.86%
DRREDDY	1277.00	-13.40	-1.04%	20.22	257	1380	7.44%	1148	11.20%	-3.47%	2.35%
EICHERMOT	7160.00	59.50	0.84%	4.53	320	8230	13.00%	5220	37.18%	0.72%	33.56%
ETERNAL	250.50	2.40	0.97%	338.12	842	368	32.01%	213	17.83%	1.40%	3.86%
GRASIM	3103.00	0.40	0.01%	4.61	142	3198	2.96%	2503	24.00%	11.04%	22.93%
HCLTECH	1244.90	49.80	4.17%	76.63	948	1780	30.07%	1103	12.82%	3.82%	-23.70%
HDFCBANK	749.15	6.45	0.87%	473.14	3525	1021	26.59%	727	3.10%	-2.92%	-22.45%
HDFCLIFE	579.40	-7.15	-1.22%	54.05	313	821	29.41%	555	4.38%	-1.28%	-24.43%
HINDALCO	1146.50	5.20	0.46%	53.25	613	1176	2.51%	618	85.52%	10.45%	81.67%
HINDUNILVR	2095.80	11.50	0.55%	21.49	448	2750	23.79%	2023	3.62%	-6.89%	-11.63%
ICICIBANK	1230.70	-9.00	-0.73%	179.21	2202	1500	17.95%	1188	3.63%	-2.59%	-15.15%
INDIGO	4473.50	20.20	0.45%	10.93	485	6233	28.22%	3895	14.85%	4.15%	-16.12%
INFY	1270.00	67.50	5.61%	360.33	4552	1728	26.50%	1089	16.62%	7.46%	-18.26%
ITC	283.40	3.75	1.34%	202.06	567	429	33.87%	277	2.27%	-10.00%	-32.41%
JIOFIN	237.50	2.55	1.09%	101.83	240	339	29.86%	223	6.36%	-3.60%	-17.09%
JSWSTEEL	1313.50	14.10	1.09%	16.02	209	1328	1.09%	962	36.52%	3.88%	34.19%
KOTAKBANK	379.90	2.50	0.66%	148.35	561	453	16.17%	346	9.96%	-0.89%	-7.95%
LT	4010.00	-0.80	-0.02%	20.85	828	4440	9.68%	3288	21.95%	-0.10%	8.98%
M&M	3005.80	35.60	1.20%	40.45	1208	3840	21.72%	2896	3.79%	-2.96%	-0.66%
MARUTI	13030.00	84.00	0.65%	5.87	757	17370	24.99%	12016	8.44%	-2.13%	6.02%
MAXHEALTH	952.00	13.55	1.44%	37.84	354	1314	27.57%	903	5.43%	-4.13%	-17.33%
NESTLEIND	1400.00	8.20	0.59%	18.61	258	1498	6.55%	1085	29.07%	-4.02%	16.36%
NTPC	367.40	-11.30	-2.98%	174.96	643	414	11.34%	316	16.43%	-7.95%	10.48%
ONGC	265.55	1.25	0.47%	168.32	444	308	13.64%	229	16.16%	-11.35%	11.43%
POWERGRID	282.00	-4.15	-1.45%	151.98	428	325	13.22%	250	12.80%	-11.42%	-3.77%
RELIANCE	1321.00	1.00	0.08%	233.03	3061	1612	18.04%	1290	2.40%	-7.67%	-6.56%
SBILIFE	1801.30	-11.20	-0.62%	11.97	215	2132	15.51%	1720	4.73%	-0.97%	-0.07%
SBIN	960.00	5.90	0.62%	159.12	1514	1235	22.25%	782	22.81%	-10.15%	17.99%
SHRIRAMFIN	913.45	-5.60	-0.61%	76.11	692	1108	17.56%	567	61.24%	-2.55%	42.16%
SUNPHARMA	1787.10	-9.40	-0.52%	28.86	515	1917	6.76%	1548	15.45%	-1.17%	6.72%
TATACONSUM	1157.80	14.50	1.27%	28.73	329	1283	9.74%	1007	14.95%	1.15%	3.34%
TATASTEEL	210.75	0.18	0.09%	293.59	619	224	6.08%	150	40.69%	-0.29%	32.51%
TCS	2451.10	153.70	6.69%	113.06	2735	3538	30.72%	2206	11.09%	-0.92%	-28.95%
TECHM	1570.10	26.90	1.74%	41.69	656	1854	15.31%	1304	20.40%	6.56%	1.36%
TITAN	4085.00	60.40	1.50%	5.22	211	4605	11.29%	3303	23.67%	-6.85%	15.87%
TMPV	391.25	6.35	1.65%	127.89	492	744	47.41%	294	32.94%	14.55%	-45.02%
TRENT	4210.00	52.70	1.27%	7.54	315	6261	32.76%	3276	28.53%	1.58%	-25.11%
ULTRACEMCO	11174.00	-58.00	-0.52%	4.13	460	13110	14.77%	10325	8.22%	-3.56%	-0.19%
WIPRO	210.10	3.69	1.79%	424.77	886	273	23.07%	187	12.65%	4.71%	-15.17%

Disclaimer / Disclosures

ANALYST CERTIFICATION

I, Mrs. Vaishali Parekh B.com, Research Analyst, author and the name subscribed to this report, hereby certify that all of the views expressed in this research report accurately reflect our views about the subject issuer(s) or securities. We also certify that no part of our compensation was, is, or will be directly or indirectly related to the specific recommendation(s) or view(s) in this report.

Terms & conditions and other disclosures:

Prabhudas Lilladher Pvt. Ltd, Mumbai, India (hereinafter referred to as "PL") is engaged in the business of Stock Broking, Portfolio Manager, Depository Participant and distribution for third party financial products. PL is a subsidiary of Prabhudas Lilladher Advisory Services Pvt Ltd. which has its various subsidiaries engaged in business of commodity broking, investment banking, financial services (margin funding) and distribution of third party financial/other products, details in respect of which are available at www.plindia.com

This document has been prepared by the Research Division of PL and is meant for use by the recipient only as information and is not for circulation. This document is not to be reported or copied or made available to others without prior permission of PL. It should not be considered or taken as an offer to sell or a solicitation to buy or sell any security.

The information contained in this report has been obtained from sources that are considered to be reliable. However, PL has not independently verified the accuracy or completeness of the same. Neither PL nor any of its affiliates, its directors or its employees accepts any responsibility of whatsoever nature for the information, statements and opinion given, made available or expressed herein or for any omission therein.

Recipients of this report should be aware that past performance is not necessarily a guide to future performance and value of investments can go down as well. The suitability or otherwise of any investments will depend upon the recipient's particular circumstances and, in case of doubt, advice should be sought from an independent expert/advisor.

Either PL or its affiliates or its directors or its employees or its representatives or its clients or their relatives may have position(s), make market, act as principal or engage in transactions of securities of companies referred to in this report and they may have used the research material prior to publication.

PL may from time to time solicit or perform investment banking or other services for any company mentioned in this document.

PL is registered as Research Analyst under Securities and Exchange Board of India (Research Analysts) Regulations, 2014 PL submits that no material disciplinary action has been taken on us by any Regulatory Authority impacting Equity Research Analysis activities.

PL or its research analysts or its associates or his relatives do not have any financial interest in the subject company.

PL or its research analysts or its associates or his relatives do not have actual/beneficial ownership of one per cent or more securities of the subject company at the end of the month immediately preceding the date of publication of the research report.

PL or its research analysts or its associates or his relatives do not have any material conflict of interest at the time of publication of the research report.

PL or its associates might have received compensation from the subject company in the past twelve months.

PL or its associates might have managed or co-managed public offering of securities for the subject company in the past twelve months or mandated by the subject company for any other assignment in the past twelve months.

PL or its associates might have received any compensation for investment banking or merchant banking or brokerage services from the subject company in the past twelve months.

PL or its associates might have received any compensation for products or services other than investment banking or merchant banking or brokerage services from the subject company in the past twelve months PL or its associates might have received any compensation or other benefits from the subject company or third party in connection with the research report.

PL encourages independence in research report preparation and strives to minimize conflict in preparation of research report. PL or its analysts did not receive any compensation or other benefits from the subject Company or third party in connection with the preparation of the research report. PL or its Research Analysts do not have any material conflict of interest at the time of publication of this report.

It is confirmed that Mrs. Vaishali Parekh B.com, Research Analyst of this report has not received any compensation from the companies mentioned in the report in the preceding twelve months compensation of our Research Analysts is not based on any specific merchant banking, investment banking or brokerage service transactions.

The Research analysts for this report certifies that all of the views expressed in this report accurately reflect his or her personal views about the subject company or companies and its or their securities, and no part of his or her compensation was, is or will be, directly or indirectly related to specific recommendations or views expressed in this report.

The research analysts for this report has not served as an officer, director or employee of the subject company PL or its research analysts have not engaged in market making activity for the subject company

Our sales people, traders, and other professionals or affiliates may provide oral or written market commentary or trading strategies to our clients that reflect opinions that are contrary to the opinions expressed herein, and our proprietary trading and investing businesses may make investment decisions that are inconsistent with the recommendations expressed herein. In reviewing these materials, you should be aware that any or all of the foregoing, among other things, may give rise to real or potential conflicts of interest.

PL and its associates, their directors and employees may (a) from time to time, have a long or short position in, and buy or sell the securities of the subject company or (b) be engaged in any other transaction involving such securities and earn brokerage or other compensation or act as a market maker in the financial instruments of the subject company or act as an advisor or lender/borrower to the subject company or may have any other potential conflict of interests with respect to any recommendation and other related information and opinions.

Regd. Office: 3rd Floor, Sadhana House, 570, P. B. Marg, Behind Mahindra Tower, Worli, Mumbai - 400 018, India.