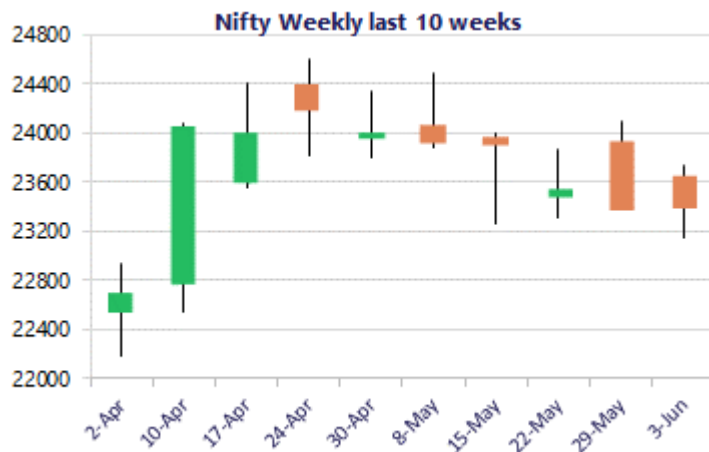
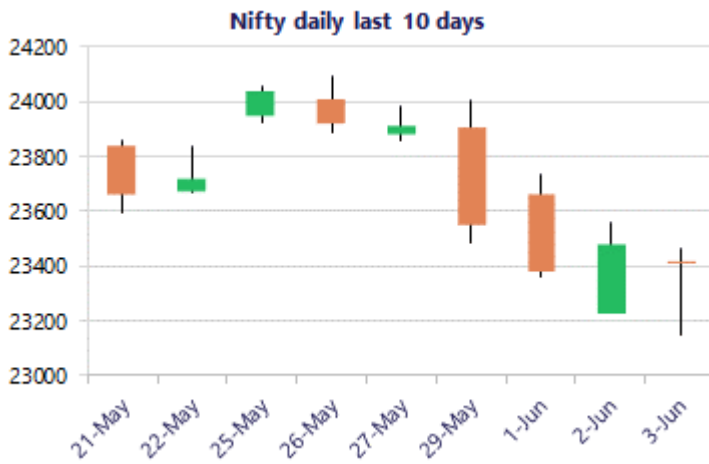


* Sensex 74346.17 - 303.67

* Nifty 23405.60 - 77.95

* Bank Nifty 54185.95 + 471.30



*Blue candle → Close rate > Open rate * Red candle → Close rate < Open rate

Nifty sustains the 23200 support zone

Nifty witnessed a volatile session recovering strongly from the low made near 23150 level to erase the losses and closed near the 23400 zone with bias still maintained with a cautiously positive approach. BankNifty indicated a positive candle with a decent revival in the second half to end in the green above the 54000 zone. The market breadth was slightly weak with the advance decline indicating a ratio of 2:3 at close.

Market Forecast

Nifty daily range 23200 - 23600

Nifty after making a low near 23150 zone witnessed a sharp recovery during the intraday session to end near the 23400 zone with the financials and banking stocks making a significant bounce back in the second half of the trading session. As mentioned earlier, the index once again has been gripped within the range having the resistance near the 50EMA zone at 24000 level which needs to be breached decisively to trigger for fresh upward move while on the downside, the 23200 zone is maintained as a good support.

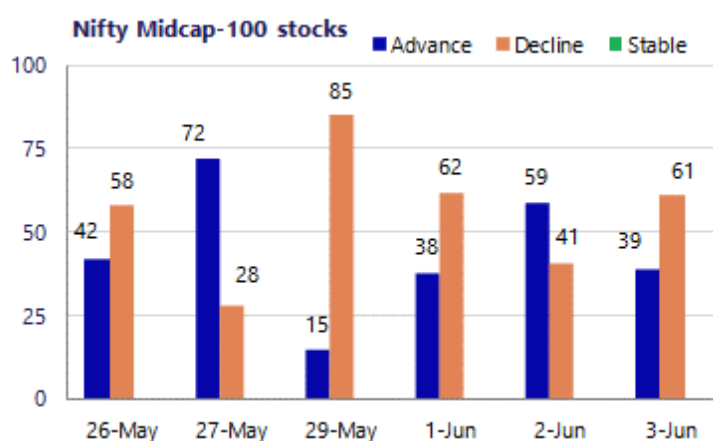
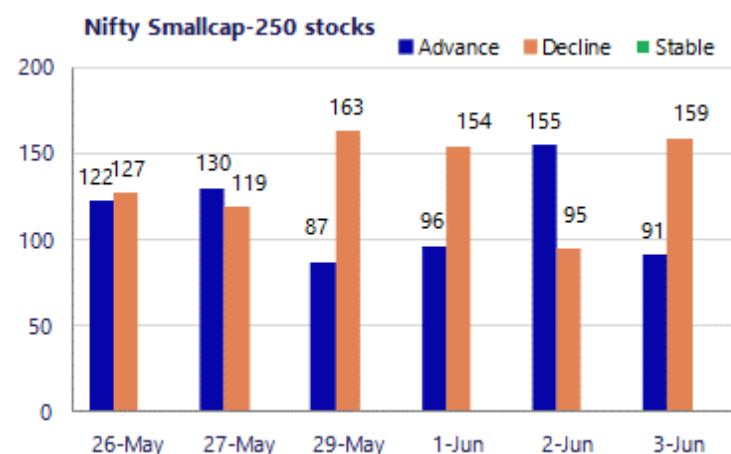
BankNifty witnessed a highly fluctuating session making the low of almost 53000 zone during the intraday session and thereafter, staged a strong revival to move past the 54000 level to slightly improve the bias expecting for further rise in the coming sessions. As said earlier, the upside is capped near the tough resistance barrier of 55400 zone which needs to be breached above decisively while the downside is maintained with strong support visible near the 53000 zone.

The support for the day is seen at 23200 levels, while the resistance is seen at 23600 levels. BankNifty would have the daily range of 53400-55000 levels.

Sensex	Period	Closing	% Chng	Trend	Reversal	2 Sup	1 Sup	Pivot	1 Res	2 Res
	Daily	23405.60	-0.33%	-4	23597.00	23031	23218	23339	23526	23647
Nifty	Weekly	23547.75	-0.72%	-1	23765.95	23102	23325	23707	23930	24312
	Monthly	23547.75	-1.87%	-5	25345.55	22545	23046	23764	24266	24984
Bank Nifty	Daily	54185.95	0.88%	-3	54319.25	52565	53376	53837	54648	55110
	Weekly	54239.20	0.34%	-3	54624.70	53210	53725	54631	55145	56051
	Monthly	54239.20	-1.14%	-3	60590.40	50902	52570	54452	56121	58003
Sensex	Daily	74346.17	-0.41%	-4	74885.00	73095	73721	74118	74744	75141
	Weekly	74775.74	-0.85%	-2	75674.50	73293	74034	75331	76072	77369
	Monthly	74775.74	-2.78%	-5	81359.20	71515	73145	75765	77395	80015

Gainers - Losers (Nifty 500 Stocks)

Gainers				Losers			
Company Name	Last Price	% Gain	Volume	Company Name	Last Price	% Loss	Volume
IFCI	80.42	12.26%	322483580	TCS	2,241.70	-8.39%	15660062
Ola Electric	43.74	9.82%	266948059	Persistent	5097.5	-6.82%	768497
RHI Magnesita	377.45	9.52%	7688522	LTM	4,052.70	-6.66%	1066491
CarTrade Tech	1,961.70	9.29%	3224564	COFORGE	1,420.90	-6.49%	4844251
KPR Mill	1,085.80	8.68%	1459589	Tech Mahindra	1,472.30	-6.31%	3493572
R R Kabel	2,155.90	6.53%	1528524	LT Technology	3299.2	-5.96%	148396
Ather Energy	1,022.05	6.40%	13219934	HCL Tech	1179	-5.19%	4800922



Nifty Daily chart with RSI indicator



BankNifty Daily chart with RSI indicator



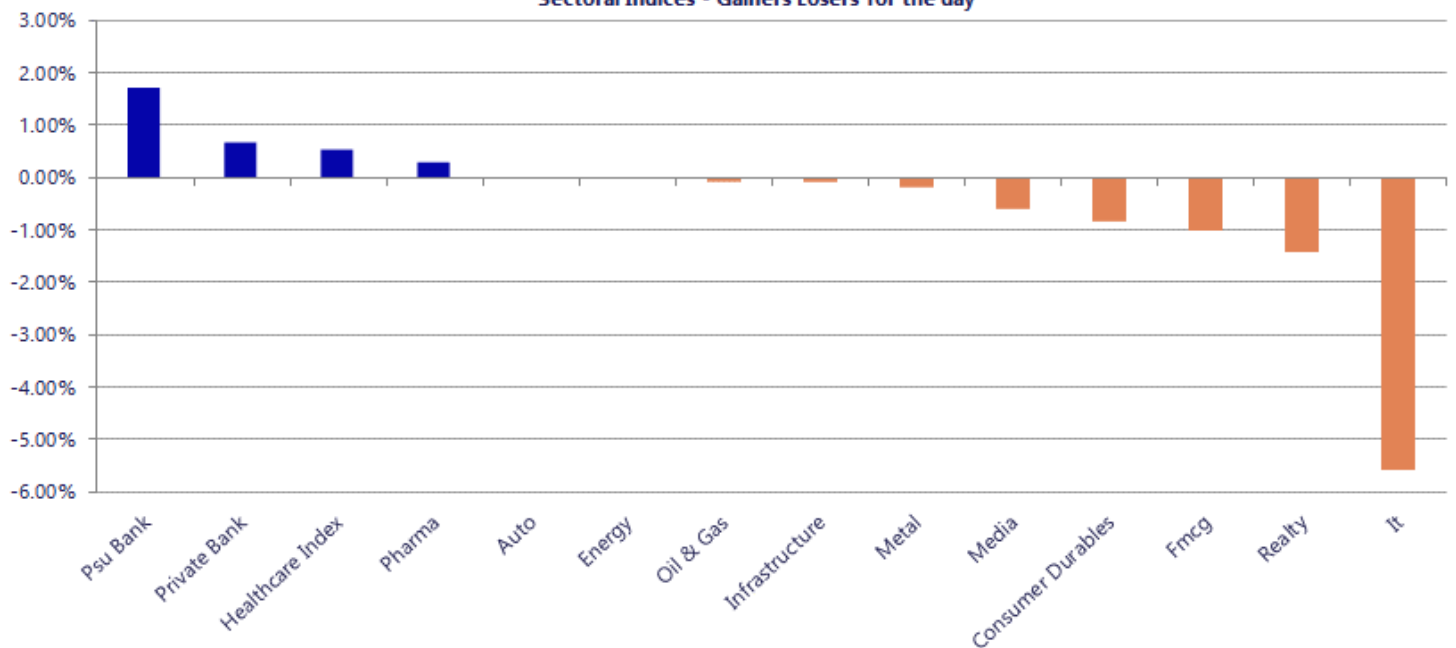
Breakouts - Cross above 200 DMA			
Company Name	LCP	Change %	200 DMA
Emkay Global	297.15	15.57	257.11
Onyx Biotec	44	10.92	39.67
Ola Electric	43.74	9.49	39.95
Shemaroo Ent	112.44	6.07	106.01
Manali Petro	64.14	5.49	60.8
Vaswani Ind	58.95	3.99	56.69
Mask Investment	158	3.16	153.16
Aditya Vision	526	2.99	510.72
Varroc Engineer	593.6	2.91	576.84
Holmarc Opto Me	107	2.89	103.99
PNB Gilts	86.02	2.62	83.82
Shree Vasu	687.95	2.44	671.58
Indian Bank	847.9	2.43	827.75
Pushpa Jeweller	118.95	1.95	116.67
Stallion India	193.5	1.93	189.83
Texmaco Infra	98.79	1.47	97.36
Macpower	948.3	1.43	934.91
Jainam Ferro	249.9	1.22	246.88

* Stocks crossing above its Simple Moving Average (200DMA)

Breakdown - Cross below 200 DMA			
Company Name	LCP	Change %	200 DMA
Fidel Softech	151.5	-4.97	159.42
ABM Inter	43.57	-3.67	45.23
Cybertech	138.64	-3.33	143.42
Soma Textile	101.95	-3.13	105.24
CreditAccess Gr	1269.2	-3.13	1310.16
Aakaar Medical	71	-2.74	73
Berger Paints	496.05	-2.26	507.51
Datamatics Glob	796.1	-2.02	812.53
Esprit Stones	72	-1.89	73.39
Ameya Precision	102.6	-1.84	104.52
SRM Contractors	489.6	-1.80	498.59
Tech Mahindra	1472.3	-1.48	1494.45
Dr Agarwals	464.25	-1.31	470.41
Vivo Collaborat	77.75	-1.27	78.75
Prime Focus	224.21	-1.26	227.06
Mindteck	212.16	-1.23	214.81
Bhagiradh Chem	233.84	-1.18	236.64
EPM	86.58	-1.12	87.56

* Stocks crossing below its Simple Moving Average (200DMA)

Sectoral Indices - Gainers Losers for the day



Nifty 50 Stocks - Summary Details											
Symbol	LTP	Chng	% Chng	Volume (lacs)	Turnover (crs.)	52w High	Diff with 52w H	52w Low	Diff with 52w L	365 days % chng	30 days % chng
NIFTY 50	23405.60	-77.95	-0.33%	4500.90	36726	26373	11.25%	22183	5.51%	-2.47%	-4.63%
ADANIENT	2929.00	-39.10	-1.32%	13.46	393	3028	3.25%	1753	67.08%	21.62%	22.10%
ADANIPTS	1801.60	-12.90	-0.71%	29.68	537	1843	2.24%	1291	39.60%	8.71%	25.78%
APOLLOHOSP	8299.00	209.50	2.59%	7.25	597	8443	1.71%	6697	23.93%	8.68%	21.82%
ASIANPAINT	2657.00	-3.70	-0.14%	9.59	255	2986	11.01%	2115	25.63%	8.69%	17.79%
AXISBANK	1257.50	6.40	0.51%	79.53	995	1418	11.34%	1043	20.62%	-0.85%	6.43%
BAJAJ-AUTO	10243.00	-38.00	-0.37%	3.55	365	10834	5.46%	7859	30.34%	2.49%	19.62%
BAJAJFINSV	1734.20	-7.20	-0.41%	5.62	97	2195	20.99%	1597	8.59%	-0.74%	-12.94%
BAJFINANCE	876.70	-5.30	-0.60%	147.48	1286	1103	20.48%	788	11.27%	-6.44%	-2.36%
BEL	406.45	-1.40	-0.34%	66.27	269	473	14.15%	361	12.53%	-5.76%	5.30%
BHARTIARTL	1821.00	6.80	0.37%	58.32	1061	2175	16.26%	1741	4.63%	-3.49%	-1.10%
CIPLA	1373.20	-6.10	-0.44%	15.20	209	1673	17.92%	1166	17.80%	4.86%	-6.79%
COALINDIA	474.20	2.05	0.43%	152.91	722	491	3.47%	369	28.63%	-1.51%	20.71%
DRREDDY	1261.90	-12.10	-0.95%	12.26	155	1380	8.54%	1148	9.88%	-4.61%	1.09%
EICHERMOT	7105.00	-36.50	-0.51%	4.14	294	8230	13.67%	5220	36.12%	-0.06%	32.70%
ETERNAL	246.65	-4.10	-1.64%	251.92	623	368	33.06%	213	16.02%	-0.15%	3.77%
GRASIM	3097.50	3.20	0.13%	4.60	142	3198	3.13%	2503	23.78%	10.84%	21.36%
HCLTECH	1177.50	-66.00	-5.31%	48.01	573	1780	33.85%	1103	6.72%	-1.80%	-27.78%
HDFCBANK	753.00	4.75	0.63%	361.09	2704	1021	26.21%	727	3.63%	-2.42%	-21.75%
HDFCLIFE	574.60	-5.30	-0.91%	20.55	118	821	29.99%	555	3.51%	-2.10%	-24.19%
HINDALCO	1139.90	-6.40	-0.56%	48.66	555	1176	3.07%	618	84.45%	9.82%	80.36%
HINDUNILVR	2086.90	-6.80	-0.32%	15.45	322	2750	24.11%	2023	3.18%	-7.29%	-11.28%
ICICIBANK	1243.40	16.80	1.37%	139.35	1716	1500	17.11%	1188	4.70%	-1.58%	-13.53%
INDIGO	4550.10	84.00	1.88%	8.08	361	6233	26.99%	3895	16.81%	5.93%	-15.48%
INFY	1220.50	-50.30	-3.96%	185.34	2272	1728	29.37%	1089	12.08%	3.27%	-20.90%
ITC	276.75	-6.50	-2.29%	280.01	776	429	35.42%	275	0.56%	-12.11%	-33.63%
JIOFIN	234.85	-2.79	-1.17%	122.57	287	339	30.64%	223	5.17%	-4.68%	-17.28%
JSWSTEEL	1306.90	-3.90	-0.30%	8.15	107	1328	1.59%	962	35.83%	3.35%	34.21%
KOTAKBANK	382.45	3.40	0.90%	148.44	563	453	15.61%	346	10.69%	-0.22%	-6.47%
LT	3946.90	-54.00	-1.35%	18.73	738	4440	11.11%	3288	20.04%	-1.67%	8.29%
M&M	3007.00	8.70	0.29%	31.10	935	3840	21.69%	2896	3.83%	-2.92%	-1.30%
MARUTI	13038.00	16.00	0.12%	6.08	796	17370	24.94%	12016	8.51%	-2.07%	7.50%
MAXHEALTH	965.00	16.30	1.72%	26.09	250	1314	26.58%	903	6.87%	-2.82%	-15.27%
NESTLEIND	1387.10	-11.60	-0.83%	17.26	241	1498	7.41%	1085	27.88%	-4.90%	16.01%
NTPC	366.35	-1.05	-0.29%	108.26	397	414	11.60%	316	16.10%	-8.22%	11.61%
ONGC	268.25	3.20	1.21%	146.19	390	308	12.76%	229	17.34%	-10.45%	13.06%
POWERGRID	284.75	2.60	0.92%	130.02	369	325	12.37%	250	13.90%	-10.55%	-1.21%
RELIANCE	1312.60	-2.00	-0.15%	200.12	2621	1612	18.56%	1290	1.75%	-8.26%	-6.61%
SBILIFE	1781.60	-20.10	-1.12%	7.84	140	2132	16.44%	1720	3.58%	-2.06%	0.35%
SBIN	971.50	14.85	1.55%	279.47	2651	1235	21.32%	782	24.28%	-9.07%	19.97%
SHRIRAMFIN	914.00	2.30	0.25%	69.51	627	1108	17.51%	567	61.34%	-2.49%	40.99%
SUNPHARMA	1787.00	-2.90	-0.16%	42.10	747	1917	6.76%	1548	15.44%	-1.18%	7.17%
TATACONSUM	1143.20	-11.50	-1.00%	18.72	215	1283	10.88%	1007	13.50%	-0.12%	2.57%
TATASTEEL	211.60	1.00	0.47%	231.99	488	224	5.70%	150	41.26%	0.11%	34.48%
TCS	2245.00	-201.90	-8.25%	156.60	3551	3538	36.55%	2206	1.75%	-9.25%	-34.07%
TECHM	1470.00	-101.40	-6.45%	34.94	522	1854	20.71%	1304	12.72%	-0.24%	-4.78%
TITAN	4082.10	4.00	0.10%	9.59	389	4605	11.36%	3303	23.58%	-6.91%	15.98%
TMPV	398.00	7.80	2.00%	86.38	340	744	46.51%	294	35.24%	16.53%	-43.45%
TRENT	4242.00	31.60	0.75%	5.45	231	6261	32.25%	3276	29.51%	2.35%	-24.11%
ULTRACEMCO	11066.00	-99.00	-0.89%	4.13	458	13110	15.59%	10325	7.18%	-4.49%	0.28%
WIPRO	203.90	-5.94	-2.83%	622.82	1276	273	25.34%	187	9.33%	1.62%	-17.19%

Disclaimer / Disclosures

ANALYST CERTIFICATION

I, Mrs. Vaishali Parekh B.com, Research Analyst, author and the name subscribed to this report, hereby certify that all of the views expressed in this research report accurately reflect our views about the subject issuer(s) or securities. We also certify that no part of our compensation was, is, or will be directly or indirectly related to the specific recommendation(s) or view(s) in this report.

Terms & conditions and other disclosures:

Prabhudas Lilladher Pvt. Ltd, Mumbai, India (hereinafter referred to as "PL") is engaged in the business of Stock Broking, Portfolio Manager, Depository Participant and distribution for third party financial products. PL is a subsidiary of Prabhudas Lilladher Advisory Services Pvt Ltd. which has its various subsidiaries engaged in business of commodity broking, investment banking, financial services (margin funding) and distribution of third party financial/other products, details in respect of which are available at www.plindia.com

This document has been prepared by the Research Division of PL and is meant for use by the recipient only as information and is not for circulation. This document is not to be reported or copied or made available to others without prior permission of PL. It should not be considered or taken as an offer to sell or a solicitation to buy or sell any security.

The information contained in this report has been obtained from sources that are considered to be reliable. However, PL has not independently verified the accuracy or completeness of the same. Neither PL nor any of its affiliates, its directors or its employees accepts any responsibility of whatsoever nature for the information, statements and opinion given, made available or expressed herein or for any omission therein.

Recipients of this report should be aware that past performance is not necessarily a guide to future performance and value of investments can go down as well. The suitability or otherwise of any investments will depend upon the recipient's particular circumstances and, in case of doubt, advice should be sought from an independent expert/advisor.

Either PL or its affiliates or its directors or its employees or its representatives or its clients or their relatives may have position(s), make market, act as principal or engage in transactions of securities of companies referred to in this report and they may have used the research material prior to publication.

PL may from time to time solicit or perform investment banking or other services for any company mentioned in this document.

PL is registered as Research Analyst under Securities and Exchange Board of India (Research Analysts) Regulations, 2014 PL submits that no material disciplinary action has been taken on us by any Regulatory Authority impacting Equity Research Analysis activities.

PL or its research analysts or its associates or his relatives do not have any financial interest in the subject company.

PL or its research analysts or its associates or his relatives do not have actual/beneficial ownership of one per cent or more securities of the subject company at the end of the month immediately preceding the date of publication of the research report.

PL or its research analysts or its associates or his relatives do not have any material conflict of interest at the time of publication of the research report.

PL or its associates might have received compensation from the subject company in the past twelve months.

PL or its associates might have managed or co-managed public offering of securities for the subject company in the past twelve months or mandated by the subject company for any other assignment in the past twelve months.

PL or its associates might have received any compensation for investment banking or merchant banking or brokerage services from the subject company in the past twelve months.

PL or its associates might have received any compensation for products or services other than investment banking or merchant banking or brokerage services from the subject company in the past twelve months PL or its associates might have received any compensation or other benefits from the subject company or third party in connection with the research report.

PL encourages independence in research report preparation and strives to minimize conflict in preparation of research report. PL or its analysts did not receive any compensation or other benefits from the subject Company or third party in connection with the preparation of the research report. PL or its Research Analysts do not have any material conflict of interest at the time of publication of this report.

It is confirmed that Mrs. Vaishali Parekh B.com, Research Analyst of this report has not received any compensation from the companies mentioned in the report in the preceding twelve months compensation of our Research Analysts is not based on any specific merchant banking, investment banking or brokerage service transactions.

The Research analysts for this report certifies that all of the views expressed in this report accurately reflect his or her personal views about the subject company or companies and its or their securities, and no part of his or her compensation was, is or will be, directly or indirectly related to specific recommendations or views expressed in this report.

The research analysts for this report has not served as an officer, director or employee of the subject company PL or its research analysts have not engaged in market making activity for the subject company

Our sales people, traders, and other professionals or affiliates may provide oral or written market commentary or trading strategies to our clients that reflect opinions that are contrary to the opinions expressed herein, and our proprietary trading and investing businesses may make investment decisions that are inconsistent with the recommendations expressed herein. In reviewing these materials, you should be aware that any or all of the foregoing, among other things, may give rise to real or potential conflicts of interest.

PL and its associates, their directors and employees may (a) from time to time, have a long or short position in, and buy or sell the securities of the subject company or (b) be engaged in any other transaction involving such securities and earn brokerage or other compensation or act as a market maker in the financial instruments of the subject company or act as an advisor or lender/borrower to the subject company or may have any other potential conflict of interests with respect to any recommendation and other related information and opinions.

Regd. Office: 3rd Floor, Sadhana House, 570, P. B. Marg, Behind Mahindra Tower, Worli, Mumbai - 400 018, India.