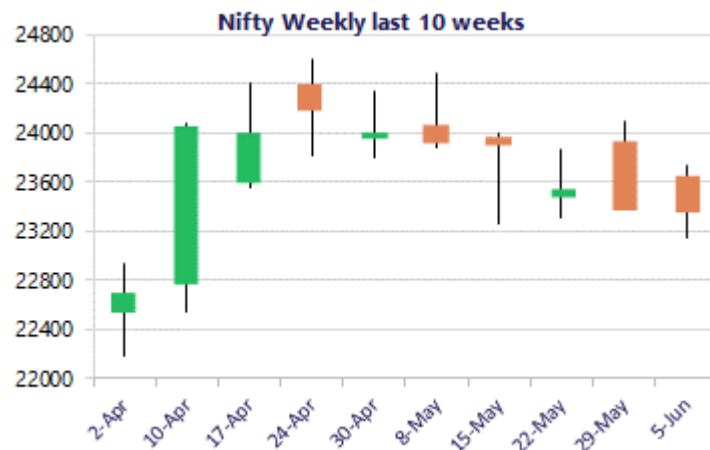
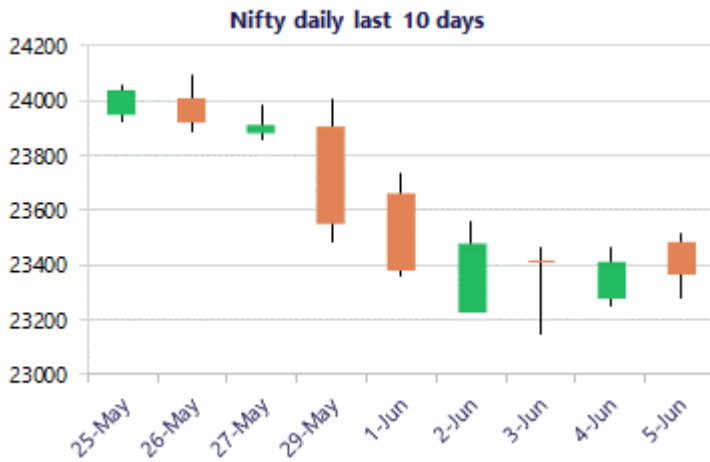


\* Sensex 74243.34 - 116.67

\* Nifty 23366.70 - 49.85

\* Bank Nifty 54496.25 + 188.40



\*Blue candle → Close rate > Open rate \* Red candle → Close rate < Open rate

### Nifty ends flat amid volatility

Nifty witnessed some fluctuations resisting near the 23500 zone and closed near the 23350 zone with sentiment still precariously placed. BankNifty has witnessed a slight revival from the 53500 zone in the last 4 sessions but still is maintained with a cautious approach closing near the 54500 level. The market breadth was almost flat with the advance decline having a neutral ratio at close.

### Market Forecast

#### Nifty daily range 23200 - 23600

Nifty witnessed a slightly volatile session finding resistance near the 23500 zone and once again slipping with profit booking seen to end the session near 23350 levels with bias and sentiment still maintained with a cautiously positive approach. The index continue to move within a range maintaining the strong support zone near the 23200 level whereas on the upside, the important 50EMA level at 23900 zone is the resistance hurdle which needs to be breached decisively to establish conviction and trigger for fresh upward move in the coming days.

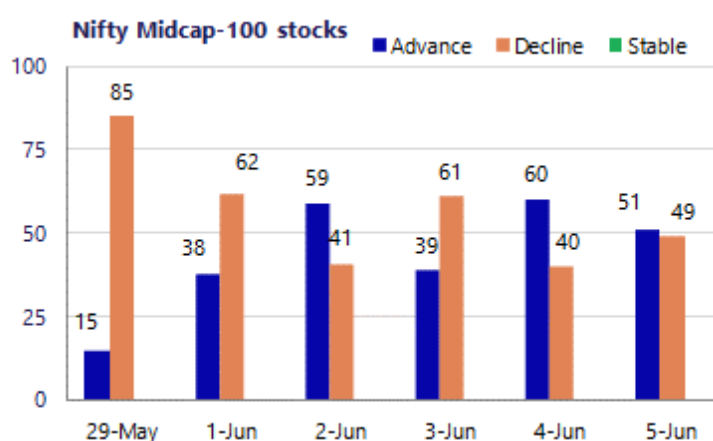
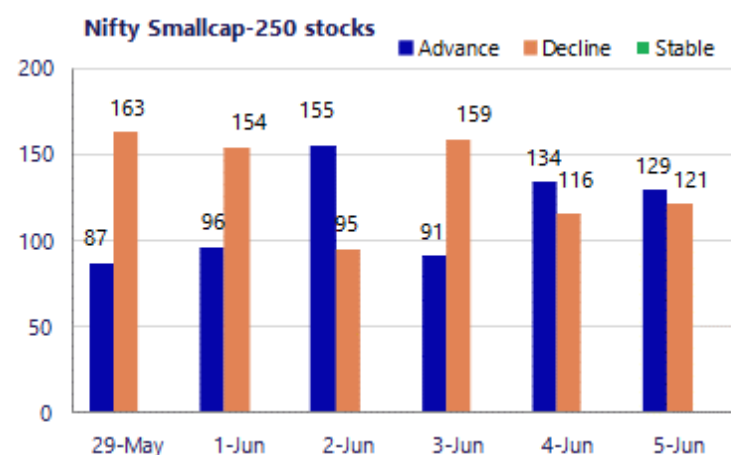
BankNifty witnessed fluctuations during the session finding resistance near the 54850 zone and amid volatility closed near the 54500 zone with bias maintained with a cautiously positive approach having no clear direction and conviction. As said earlier, the upside is capped near the tough resistance barrier of 55500 zone which needs to be breached above decisively while the downside is maintained with strong support visible near the 53000 zone which needs to be sustained in the coming sessions.

The support for the day is seen at 23200 levels, while the resistance is seen at 23600 levels. BankNifty would have the daily range of 53500-55500 levels.

Sensex	Period	Closing	% Chng	Trend	Reversal	2 Sup	1 Sup	Pivot	1 Res	2 Res
Nifty	Daily	23366.70	-0.21%	-6	23445.40	23155	23261	23389	23494	23622
	Weekly	23366.70	-0.77%	-2	23611.40	22835	23101	23417	23683	24000
	Monthly	23547.75	-1.87%	-5	25345.55	22545	23046	23764	24266	24984
Bank Nifty	Daily	54496.25	0.35%	1	54150.15	53776	54136	54501	54861	55226
	Weekly	54496.25	0.47%	-4	54448.50	52296	53396	54127	55227	55958
	Monthly	54239.20	-1.14%	-3	60590.40	50902	52570	54452	56121	58003
Sensex	Daily	74243.34	-0.16%	-6	74440.90	73588	73916	74317	74644	75045
	Weekly	74243.34	-0.71%	-3	75072.35	72493	73368	74368	75243	76243
	Monthly	74775.74	-2.78%	-5	81359.20	71515	73145	75765	77395	80015

**Gainers - Losers ( Nifty 500 Stocks )**

Gainers				Losers			
Company Name	Last Price	% Gain	Volume	Company Name	Last Price	% Loss	Volume
Zee Entertain	112.27	7.52%	230280587	Wockhardt	1,920.90	-7.33%	3362470
Adani Green Ene	1,525.70	7.19%	10448500	Hind Zinc	566.8	-6.14%	10696453
Himadri Special	685.05	6.71%	24445679	Netweb	4,666.00	-5.44%	1931743
Jyoti CNC Auto	634.30	6.07%	7789421	HFCL	187.23	-5.00%	43262952
Schneider Infra	1,172.20	5.62%	1581719	NALCO	395.70	-4.42%	14357059
Saregama India	476.20	5.21%	4026582	Tejas Networks	576.2	-4.28%	14331226
Acutaas Chem	3,328.30	5.17%	1067585	Jain Resource	344	-3.83%	2313627



### Nifty Daily chart with RSI indicator



### BankNifty Daily chart with RSI indicator



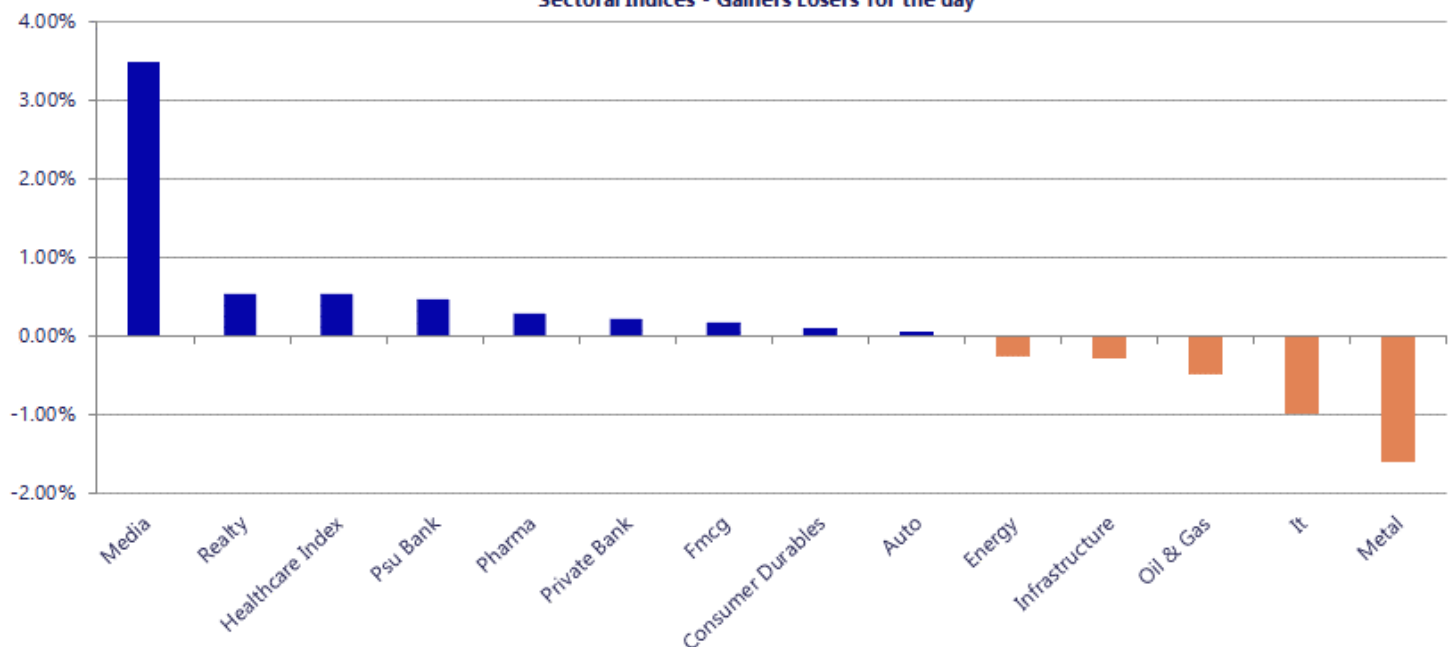
Breakouts - Cross above 200 DMA			
Company Name	LCP	Change %	200 DMA
Ramco System	562.25	13.66	494.68
Lotus Eye Care	124.62	8.83	114.51
Quess Corp	235.71	7.70	218.85
Sundaram Brake	728.75	7.26	679.42
Jindal Poly Inv	1095.6	6.64	1027.39
Filatex India	51.85	5.47	49.16
Greaves Cotton	192.2	4.92	183.18
Sacheerome	323	4.37	309.49
Chemcon Special	207.88	4.33	199.26
De Nora India	765.5	4.06	735.63
QMS Medical	92.5	3.79	89.12
Virtual Galaxy	157.8	3.42	152.58
Standard Eng	154.72	3.13	150.02
Edelweiss	114.67	2.93	111.41
Pushpa Jeweller	120	2.92	116.59
Uttam Sugar	246.85	2.90	239.9
Ameya Precision	107.35	2.79	104.44
Dalmia Sugar	342.3	2.78	333.03

\* Stocks crossing above its Simple Moving Average (200DMA)

Breakdown - Cross below 200 DMA			
Company Name	LCP	Change %	200 DMA
Kross	178.11	-6.44	190.36
Aakaar Medical	70.8	-2.88	72.9
JagranPrakashan	66.79	-2.79	68.71
Simplex Infra	241	-2.48	247.12
AksharChem	227.53	-2.34	232.97
TPL Plastech	66.54	-2.26	68.08
NOCIL	161.19	-2.04	164.55
Entero Health	1113.8	-1.81	1134.34
Shree Pushkar	359.35	-1.60	365.2
Soma Textile	103.9	-1.50	105.48
Maithan Alloys	1009	-1.39	1023.21
Mindteck	212.49	-1.22	215.11
Pricol	561.35	-1.22	568.29
Kabra Extrusion	235.45	-1.20	238.32
NAVA	595.5	-1.18	602.6
Butterfly	656.3	-1.11	663.66
Responsive Ind	180.66	-0.99	182.46
Ginni Filaments	41.41	-0.86	41.77

\* Stocks crossing below its Simple Moving Average (200DMA)

Sectoral Indices - Gainers Losers for the day



Nifty 50 Stocks - Summary Details											
Symbol	LTP	Chng	% Chng	Volume (lacs)	Turnover (crs.)	52w High	Diff with 52w H	52w Low	Diff with 52w L	365 days % chng	30 days % chng
NIFTY 50	23366.70	-49.85	-0.21%	3662.08	28433	26373	11.40%	22183	5.34%	-2.77%	-5.59%
ADANIEN	3043.00	70.20	2.36%	56.17	1694	3060	0.55%	1753	73.59%	23.60%	25.15%
ADANIPTS	1826.00	35.10	1.96%	16.41	298	1843	0.91%	1291	41.50%	5.86%	25.35%
APOLLOHOSP	8314.50	65.50	0.79%	1.88	156	8443	1.52%	6697	24.16%	6.98%	20.92%
ASIANPAINT	2677.00	15.40	0.58%	16.15	434	2986	10.34%	2115	26.57%	10.16%	19.32%
AXISBANK	1273.30	20.00	1.60%	78.25	989	1418	10.22%	1043	22.14%	1.08%	9.86%
BAJAJ-AUTO	10350.00	-12.00	-0.12%	2.47	256	10834	4.47%	7859	31.70%	3.03%	20.95%
BAJAJFINSV	1700.00	-9.80	-0.57%	14.14	243	2195	22.55%	1597	6.45%	-5.27%	-12.55%
BAJFINANCE	889.55	15.15	1.73%	132.75	1189	1103	19.32%	788	12.90%	-7.20%	-0.43%
BEL	408.00	-1.90	-0.46%	110.85	452	473	13.82%	361	12.96%	-5.85%	3.68%
BHARTIARTL	1798.00	-20.90	-1.15%	39.27	708	2175	17.31%	1741	3.30%	-0.45%	-4.30%
CIPLA	1402.00	16.30	1.18%	10.50	147	1673	16.20%	1166	20.27%	5.12%	-5.89%
COALINDIA	472.05	-9.60	-1.99%	95.93	454	491	3.91%	369	28.05%	-0.12%	19.54%
DRREDDY	1283.00	15.50	1.22%	7.75	99	1380	7.01%	1148	11.72%	0.93%	-0.59%
EICHERMOT	7050.00	-60.00	-0.84%	4.22	299	8230	14.34%	5220	35.07%	-3.44%	32.81%
ETERNAL	256.75	2.40	0.94%	342.07	876	368	30.32%	213	20.77%	3.33%	0.07%
GRASIM	3092.00	-11.50	-0.37%	6.97	216	3198	3.30%	2503	23.56%	7.68%	21.05%
HCLTECH	1155.10	-13.20	-1.13%	19.71	228	1780	35.11%	1103	4.69%	-3.76%	-29.24%
HDFCBANK	748.20	-6.00	-0.80%	221.17	1660	1021	26.68%	727	2.97%	-3.12%	-23.25%
HDFCLIFE	574.80	1.05	0.18%	38.83	227	821	29.97%	555	3.55%	-3.25%	-24.53%
HINDALCO	1092.00	-33.60	-2.99%	45.47	500	1176	7.14%	631	73.15%	3.54%	71.36%
HINDUNILVR	2121.20	41.80	2.01%	18.23	384	2750	22.87%	2023	4.88%	-8.86%	-10.74%
ICICIBANK	1261.00	9.30	0.74%	101.66	1280	1500	15.93%	1188	6.18%	0.78%	-13.32%
INDIGO	4473.60	-35.20	-0.78%	7.89	353	6233	28.22%	3895	14.85%	5.55%	-18.39%
INFY	1199.00	-2.30	-0.19%	86.92	1045	1728	30.61%	1089	10.10%	1.77%	-22.86%
ITC	280.95	0.65	0.23%	160.66	450	429	34.44%	275	2.15%	-9.79%	-32.96%
JIOFIN	237.29	1.55	0.66%	121.87	289	339	29.92%	223	6.27%	-4.49%	-18.60%
JSWSTEEL	1286.60	-14.50	-1.11%	16.18	207	1328	3.12%	962	33.72%	2.73%	32.81%
KOTAKBANK	376.95	-4.55	-1.19%	101.30	384	453	16.82%	346	9.10%	1.51%	-7.61%
LT	3962.10	20.00	0.51%	12.78	506	4440	10.76%	3288	20.50%	-2.28%	8.77%
M&M	3039.00	22.90	0.76%	16.86	512	3840	20.86%	2896	4.94%	-5.35%	-0.09%
MARUTI	13035.00	-29.00	-0.22%	2.96	386	17370	24.96%	12016	8.48%	-2.91%	7.50%
MAXHEALTH	977.00	10.80	1.12%	13.17	128	1314	25.66%	903	8.19%	-2.34%	-14.10%
NESTLEIND	1391.00	8.10	0.59%	13.42	185	1498	7.15%	1085	28.24%	-5.87%	15.85%
NTPC	360.75	-5.65	-1.54%	102.77	373	414	12.95%	316	14.32%	-9.51%	9.77%
ONGC	264.30	-3.25	-1.21%	74.93	199	308	14.05%	229	15.61%	-8.85%	11.16%
POWERGRID	285.40	0.80	0.28%	69.55	198	325	12.17%	250	14.16%	-10.66%	-3.01%
RELIANCE	1291.40	-6.30	-0.49%	177.85	2303	1612	19.88%	1288	0.26%	-11.77%	-10.47%
SBILIFE	1785.00	20.10	1.14%	7.15	128	2132	16.28%	1720	3.78%	-1.99%	0.57%
SBIN	977.00	-2.25	-0.23%	209.56	2057	1235	20.87%	782	24.98%	-7.82%	21.22%
SHRIRAMFIN	922.60	6.80	0.74%	57.69	536	1108	16.73%	567	62.86%	-4.33%	41.62%
SUNPHARMA	1783.10	3.00	0.17%	24.95	446	1917	6.97%	1548	15.19%	-2.07%	5.94%
TATACONSUM	1131.80	-17.50	-1.52%	9.98	114	1283	11.76%	1007	12.37%	-1.88%	1.79%
TATASTEEL	206.80	-3.77	-1.79%	358.02	739	224	7.84%	150	38.05%	-2.14%	30.91%
TCS	2196.00	-45.00	-2.01%	50.20	1114	3538	37.93%	2192	0.18%	-9.53%	-34.86%
TECHM	1482.00	-5.30	-0.36%	22.02	328	1854	20.06%	1304	13.64%	2.05%	-5.17%
TITAN	4268.00	37.00	0.87%	13.90	591	4605	7.32%	3303	29.21%	-2.41%	21.80%
TMPV	397.45	-2.25	-0.56%	95.54	380	744	46.58%	294	35.05%	16.85%	-44.03%
TRENT	2770.00	-67.60	-2.38%	13.47	375	4174	33.64%	2184	26.85%	0.47%	-26.76%
ULTRACEMCO	10919.00	-78.00	-0.71%	4.25	465	13110	16.71%	10325	5.75%	-8.73%	-2.15%
WIPRO	198.05	-6.27	-3.07%	435.39	852	273	27.48%	187	6.19%	-0.87%	-20.12%

## Disclaimer / Disclosures

### ANALYST CERTIFICATION

I, Mrs. Vaishali Parekh B.com, Research Analyst, author and the name subscribed to this report, hereby certify that all of the views expressed in this research report accurately reflect our views about the subject issuer(s) or securities. We also certify that no part of our compensation was, is, or will be directly or indirectly related to the specific recommendation(s) or view(s) in this report.

Terms & conditions and other disclosures:

Prabhudas Lilladher Pvt. Ltd, Mumbai, India (hereinafter referred to as "PL") is engaged in the business of Stock Broking, Portfolio Manager, Depository Participant and distribution for third party financial products. PL is a subsidiary of Prabhudas Lilladher Advisory Services Pvt Ltd. which has its various subsidiaries engaged in business of commodity broking, investment banking, financial services (margin funding) and distribution of third party financial/other products, details in respect of which are available at [www.plindia.com](http://www.plindia.com)

This document has been prepared by the Research Division of PL and is meant for use by the recipient only as information and is not for circulation. This document is not to be reported or copied or made available to others without prior permission of PL. It should not be considered or taken as an offer to sell or a solicitation to buy or sell any security.

The information contained in this report has been obtained from sources that are considered to be reliable. However, PL has not independently verified the accuracy or completeness of the same. Neither PL nor any of its affiliates, its directors or its employees accepts any responsibility of whatsoever nature for the information, statements and opinion given, made available or expressed herein or for any omission therein.

Recipients of this report should be aware that past performance is not necessarily a guide to future performance and value of investments can go down as well. The suitability or otherwise of any investments will depend upon the recipient's particular circumstances and, in case of doubt, advice should be sought from an independent expert/advisor.

Either PL or its affiliates or its directors or its employees or its representatives or its clients or their relatives may have position(s), make market, act as principal or engage in transactions of securities of companies referred to in this report and they may have used the research material prior to publication.

PL may from time to time solicit or perform investment banking or other services for any company mentioned in this document.

PL is registered as Research Analyst under Securities and Exchange Board of India (Research Analysts) Regulations, 2014 PL submits that no material disciplinary action has been taken on us by any Regulatory Authority impacting Equity Research Analysis activities.

PL or its research analysts or its associates or his relatives do not have any financial interest in the subject company.

PL or its research analysts or its associates or his relatives do not have actual/beneficial ownership of one per cent or more securities of the subject company at the end of the month immediately preceding the date of publication of the research report.

PL or its research analysts or its associates or his relatives do not have any material conflict of interest at the time of publication of the research report.

PL or its associates might have received compensation from the subject company in the past twelve months.

PL or its associates might have managed or co-managed public offering of securities for the subject company in the past twelve months or mandated by the subject company for any other assignment in the past twelve months.

PL or its associates might have received any compensation for investment banking or merchant banking or brokerage services from the subject company in the past twelve months.

PL or its associates might have received any compensation for products or services other than investment banking or merchant banking or brokerage services from the subject company in the past twelve months PL or its associates might have received any compensation or other benefits from the subject company or third party in connection with the research report.

PL encourages independence in research report preparation and strives to minimize conflict in preparation of research report. PL or its analysts did not receive any compensation or other benefits from the subject Company or third party in connection with the preparation of the research report. PL or its Research Analysts do not have any material conflict of interest at the time of publication of this report.

It is confirmed that Mrs. Vaishali Parekh B.com, Research Analyst of this report has not received any compensation from the companies mentioned in the report in the preceding twelve months compensation of our Research Analysts is not based on any specific merchant banking, investment banking or brokerage service transactions.

The Research analysts for this report certifies that all of the views expressed in this report accurately reflect his or her personal views about the subject company or companies and its or their securities, and no part of his or her compensation was, is or will be, directly or indirectly related to specific recommendations or views expressed in this report.

The research analysts for this report has not served as an officer, director or employee of the subject company PL or its research analysts have not engaged in market making activity for the subject company

Our sales people, traders, and other professionals or affiliates may provide oral or written market commentary or trading strategies to our clients that reflect opinions that are contrary to the opinions expressed herein, and our proprietary trading and investing businesses may make investment decisions that are inconsistent with the recommendations expressed herein. In reviewing these materials, you should be aware that any or all of the foregoing, among other things, may give rise to real or potential conflicts of interest.

PL and its associates, their directors and employees may (a) from time to time, have a long or short position in, and buy or sell the securities of the subject company or (b) be engaged in any other transaction involving such securities and earn brokerage or other compensation or act as a market maker in the financial instruments of the subject company or act as an advisor or lender/borrower to the subject company or may have any other potential conflict of interests with respect to any recommendation and other related information and opinions.

**Regd. Office:** 3<sup>rd</sup> Floor, Sadhana House, 570, P. B. Marg, Behind Mahindra Tower, Worli, Mumbai - 400 018, India.