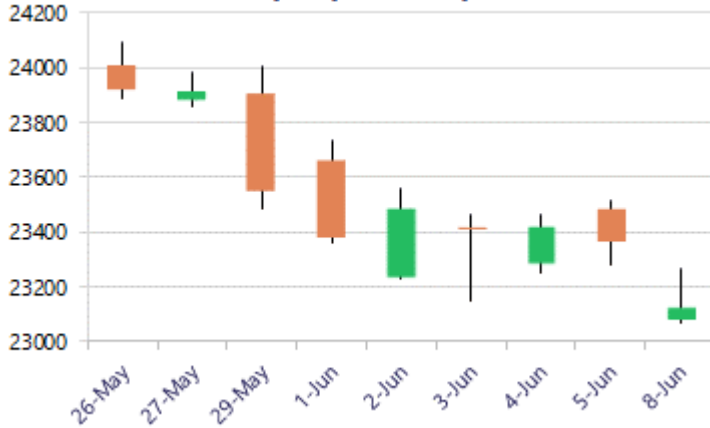


* Sensex 73524.26 - 719.08

* Nifty 23123.00 - 243.70

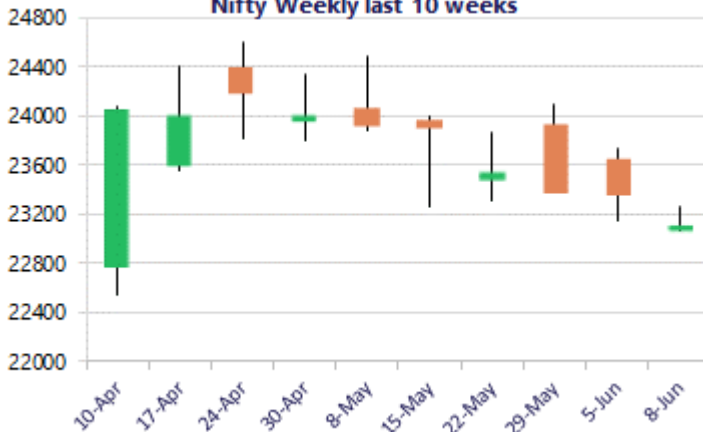
* Bank Nifty 54063.75 - 432.50

Nifty daily last 10 days



10

Nifty Weekly last 10 weeks



*Blue candle → Close rate > Open rate * Red candle → Close rate < Open rate

Nifty at critical juncture

Nifty once again was subjected to the fresh geo-political escalations triggered in the middle east creating a nervous and tense scenario for the coming sessions ahead. BankNifty ended near the 54000 zone amid fluctuations and would need to sustain the crucial 53000 zone in the coming sessions. The market breadth was weak with the advance decline indicating a ratio of 1:4 at close.

Market Forecast

Nifty daily range 23000 - 23400

Nifty witnessed a huge gap down below the important support zone of 23200 level on the back of geo-political escalations triggered once again amid the middle east with the sentiment maintained with a very cautious approach and the index is precariously placed as of now. A decisive breach below the 23000 level shall trigger for fresh selling pressure having the next major and crucial support positioned near the 22300 zone which would turn the overall bias into a tense situation. From current rate, the 50EMA level at 23800 zone shall be the important resistance which needs to be breached above decisively.

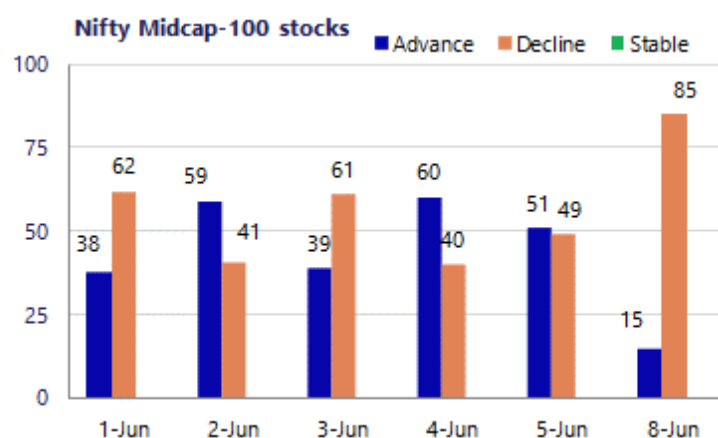
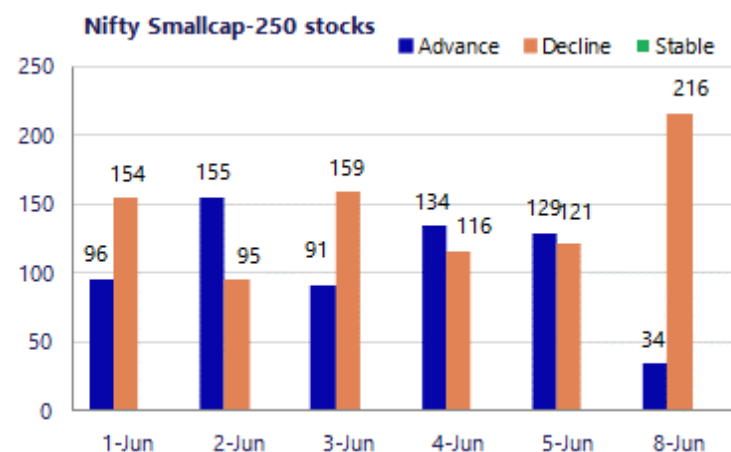
BankNifty opened on the lower side with a weak bias and amid some volatility hovered between 54400 and 54000 levels to end near the 54000 zone with sentiment turning weak and pessimism creeping in. On the upside, the 50EMA level at 55000 zone is positioned as the important resistance zone which needs to be breached above decisively to improve the bias whereas on the downside, the crucial and important support is positioned near the 53000 zone which needs to be sustained in the coming sessions.

The support for the day is seen at 23000 levels, while the resistance is seen at 23400 levels. BankNifty would have the daily range of 53000-55000 levels.

Sensex	Period	Closing	% Chng	Trend	Reversal	2 Sup	1 Sup	Pivot	1 Res	2 Res
Nifty	Daily	23123.00	-1.04%	-7	23287.45	22956	23040	23153	23237	23351
	Weekly	23366.70	-0.77%	-2	23611.40	22835	23101	23417	23683	24000
	Monthly	23547.75	-1.87%	-5	25345.55	22545	23046	23764	24266	24984
Bank Nifty	Daily	54063.75	-0.79%	-1	54071.90	53509	53786	54121	54398	54733
	Weekly	54496.25	0.47%	-4	54448.50	52296	53396	54127	55227	55958
	Monthly	54239.20	-1.14%	-3	60590.40	50902	52570	54452	56121	58003
Sensex	Daily	73524.26	-0.97%	-7	73968.30	72977	73251	73593	73866	74208
	Weekly	74243.34	-0.71%	-3	75072.35	72493	73368	74368	75243	76243
	Monthly	74775.74	-2.78%	-5	81359.20	71515	73145	75765	77395	80015

Gainers - Losers (Nifty 500 Stocks)

Gainers				Losers			
Company Name	Last Price	% Gain	Volume	Company Name	Last Price	% Loss	Volume
CCL Products	1173	8.70%	6371979	Netweb	4,264.50	-8.60%	3047821
CarTrade Tech	2,069.80	5.69%	1601009	Wipro	181.76	-8.37%	75164049
Caplin Labs	2111	3.83%	628306	GMDC	609.65	-7.31%	3123540
Zydus Wellness	523.50	3.75%	1320715	IFCI	73.80	-7.29%	51941209
Syngene Intl	449.50	3.51%	5661744	GE Vernova TD	4,744.00	-6.37%	1071520
Balrampur Chini	550.40	3.50%	1652219	Travel Food Ser	1206.3	-6.04%	128648
Max Healthcare	1,007.45	3.09%	5444557	Muthoot Finance	2964.7	-5.98%	1025581



Nifty Daily chart with RSI indicator



BankNifty Daily chart with RSI indicator

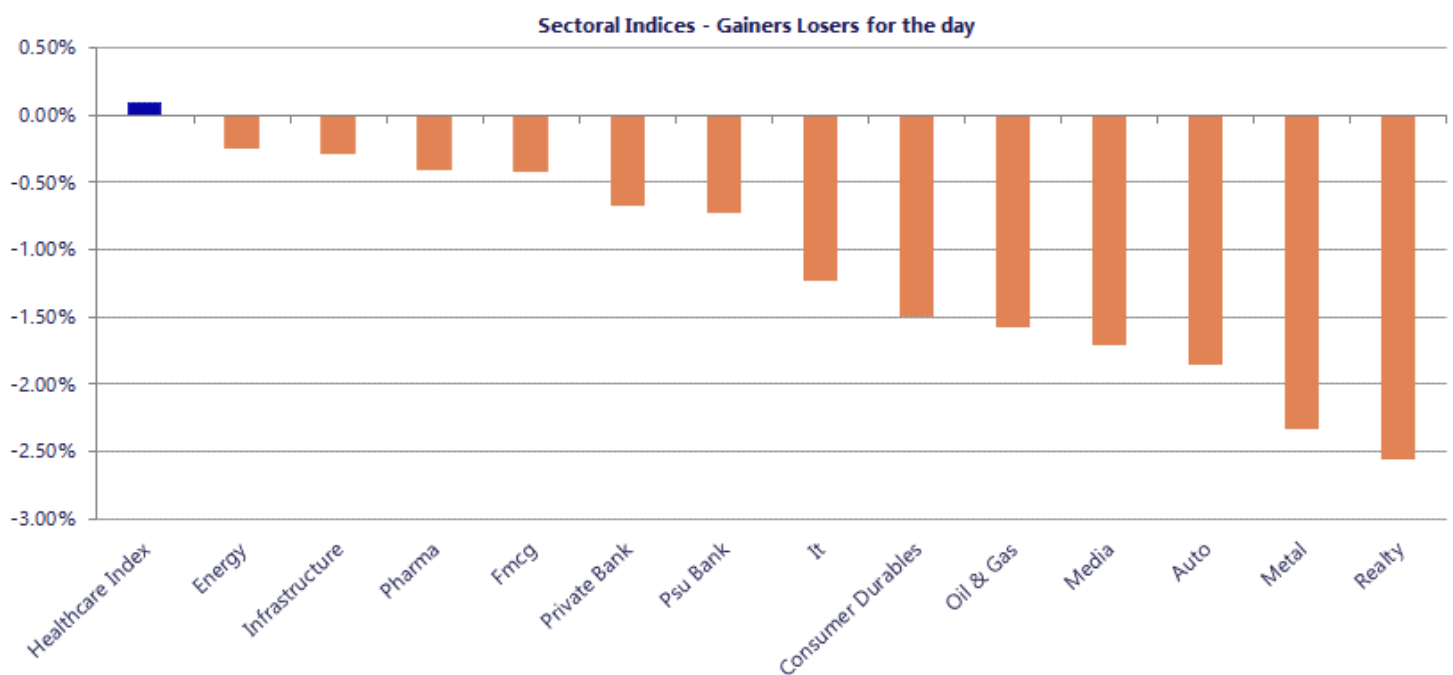


Breakouts - Cross above 200 DMA			
Company Name	LCP	Change %	200 DMA
Voler Car	259.7	19.04	218.17
Creative New	719.2	9.29	658.09
BCL Industries	37.02	8.31	34.18
P E Analytics	215	7.71	199.61
Latteys Industr	22.97	2.64	22.38
Felix Industrie	188.3	2.36	183.95
Udayshivakumar	26.08	1.84	25.61
SHUBHLAXMI	23.1	1.81	22.69
Power Grid Corp	290.3	1.54	285.89
NRB Industrial	30.47	1.47	30.03
Simplex Infra	249	0.82	246.97
Tech Mahindra	1503.4	0.60	1494.47
JSW Dulux	3168.1	0.37	3156.56
GAIL	168.6	0.33	168.05
Sambhv Steel	106.66	0.18	106.47
Bannariamman	3613	0.09	3609.77
Diensten Tech	140.4	0.08	140.29

Breakdown - Cross below 200 DMA			
Company Name	LCP	Change %	200 DMA
GRM Overseas	121.75	-19.20	150.69
Spandana Sphoor	233.35	-6.16	248.67
Valiant Organic	269.7	-4.60	282.71
Surya Roshni	246.81	-4.21	257.66
Motilal Oswal	821.15	-3.97	855.07
Oil Country	58.38	-3.95	60.78
20 Microns	185.14	-3.82	192.49
Oricon Ent	58.1	-3.81	60.4
Edelweiss	107.62	-3.46	111.48
Updater Service	183.06	-3.46	189.62
Sejal Glass	700.45	-3.35	724.76
UFO Moviez	72.2	-3.22	74.6
Hemisphere	136.11	-3.17	140.57
Pondy Oxides	1229.8	-3.10	1269.15
Prakash Ind	138.99	-3.00	143.29
Asahi Songwon	245.49	-2.88	252.76
Tega Industries	1772.2	-2.84	1824.08
SRM Contractors	485.05	-2.78	498.92

* Stocks crossing above its Simple Moving Average (200DMA)

* Stocks crossing below its Simple Moving Average (200DMA)



Nifty 50 Stocks - Summary Details											
Symbol	LTP	Chng	% Chng	Volume (lacs)	Turnover (crs.)	52w High	Diff with 52w H	52w Low	Diff with 52w L	365 days % chng	30 days % chng
NIFTY 50	23123.00	-243.70	-1.04%	3757.31	26550	26373	12.32%	22183	4.24%	-4.36%	-7.52%
ADANIENT	2960.20	-88.00	-2.89%	16.53	497	3060	3.26%	1753	68.86%	18.13%	20.31%
ADANIPTS	1794.60	-29.60	-1.62%	25.74	468	1843	2.62%	1291	39.06%	1.94%	21.94%
APOLLOHOSP	8345.00	40.50	0.49%	5.39	453	8490	1.71%	6697	24.62%	3.06%	20.20%
ASIANPAINT	2655.10	-31.60	-1.18%	12.63	336	2986	11.07%	2115	25.54%	2.12%	18.26%
AXISBANK	1267.30	-5.00	-0.39%	50.34	640	1418	10.65%	1043	21.56%	-0.08%	6.09%
BAJAJ-AUTO	10180.00	-162.00	-1.57%	1.28	131	10834	6.04%	7859	29.54%	-4.96%	17.86%
BAJAJFINSV	1665.70	-37.50	-2.20%	7.57	127	2195	24.11%	1597	4.30%	-8.39%	-16.30%
BAJFINANCE	869.25	-20.15	-2.27%	62.03	541	1103	21.16%	788	10.32%	-9.01%	-7.25%
BEL	412.30	4.10	1.00%	120.17	493	473	12.92%	361	14.15%	-6.23%	5.53%
BHARTIARTL	1820.10	21.90	1.22%	63.25	1142	2175	16.30%	1741	4.57%	-0.78%	-2.68%
CIPLA	1386.30	-15.00	-1.07%	6.69	93	1673	17.14%	1166	18.92%	2.92%	-7.84%
COALINDIA	464.55	-7.75	-1.64%	100.75	470	491	5.44%	369	26.01%	1.79%	16.44%
DRREDDY	1275.00	-3.20	-0.25%	8.63	111	1380	7.59%	1148	11.02%	-1.46%	-3.47%
EICHERMOT	7031.00	-39.00	-0.55%	4.03	284	8230	14.57%	5220	34.71%	-3.72%	30.35%
ETERNAL	247.15	-9.35	-3.65%	251.27	630	368	32.92%	213	16.25%	-3.60%	-5.62%
GRASIM	3060.30	-27.40	-0.89%	6.87	211	3198	4.29%	2503	22.29%	3.09%	18.87%
HCLTECH	1151.80	-2.90	-0.25%	15.46	178	1780	35.30%	1103	4.39%	-3.89%	-29.67%
HDFCBANK	738.00	-9.05	-1.21%	215.51	1591	1021	27.68%	727	1.56%	-5.49%	-25.41%
HDFCLIFE	563.00	-12.30	-2.14%	25.07	142	821	31.40%	555	1.42%	-9.44%	-25.44%
HINDALCO	1053.00	-39.60	-3.62%	48.80	521	1176	10.46%	634	66.22%	0.82%	61.96%
HINDUNILVR	2109.00	-12.50	-0.59%	16.01	338	2750	23.31%	2023	4.28%	-7.81%	-11.75%
ICICIBANK	1250.00	-12.10	-0.96%	107.14	1339	1500	16.67%	1188	5.25%	-1.17%	-14.37%
INDIGO	4375.00	-106.30	-2.37%	8.27	362	6233	29.80%	3895	12.32%	-3.27%	-20.17%
INFY	1187.00	-10.50	-0.88%	86.32	1027	1728	31.31%	1089	9.00%	0.66%	-24.10%
ITC	280.00	-0.70	-0.25%	157.80	443	429	34.66%	275	1.80%	-8.93%	-33.50%
JIOFIN	228.19	-8.70	-3.67%	130.90	303	339	32.61%	223	2.19%	-8.48%	-22.38%
JSWSTEEL	1258.00	-26.00	-2.02%	11.73	148	1328	5.27%	965	30.41%	-1.55%	25.19%
KOTAKBANK	376.85	-0.60	-0.16%	144.61	545	453	16.85%	346	9.07%	-1.04%	-9.12%
LT	3870.50	-82.70	-2.09%	16.79	653	4440	12.83%	3288	17.71%	-2.62%	5.86%
M&M	2970.00	-70.50	-2.32%	24.16	719	3840	22.65%	2896	2.56%	-10.82%	-4.39%
MARUTI	12875.00	-175.00	-1.34%	3.73	483	17370	25.88%	12016	7.15%	-6.20%	3.31%
MAXHEALTH	1006.05	28.80	2.95%	54.45	545	1314	23.45%	903	11.41%	-0.64%	-13.88%
NESTLEIND	1399.90	13.70	0.99%	11.08	155	1498	6.55%	1085	29.06%	-5.57%	15.83%
NTPC	361.50	-0.15	-0.04%	149.34	542	414	12.77%	316	14.56%	-10.11%	8.61%
ONGC	264.70	-0.05	-0.02%	69.75	185	308	13.92%	229	15.79%	-5.19%	10.26%
POWERGRID	290.00	4.35	1.52%	87.49	253	325	10.76%	250	16.00%	-7.63%	-1.96%
RELIANCE	1262.80	-28.20	-2.18%	164.95	2098	1612	21.65%	1259	0.29%	-12.01%	-12.52%
SBILIFE	1768.00	-14.80	-0.83%	4.39	78	2132	17.07%	1720	2.79%	-5.56%	-0.71%
SBIN	980.00	2.30	0.24%	128.95	1265	1235	20.63%	782	25.37%	-3.86%	20.53%
SHRIRAMFIN	894.30	-29.00	-3.14%	45.84	414	1108	19.29%	567	57.86%	-11.26%	29.94%
SUNPHARMA	1791.70	9.50	0.53%	30.99	556	1917	6.52%	1548	15.74%	-3.04%	6.70%
TATACONSUM	1105.90	-25.00	-2.21%	7.63	85	1283	13.78%	1007	9.80%	-5.98%	-0.87%
TATASTEEL	201.60	-5.17	-2.50%	310.37	632	224	10.16%	150	34.58%	-6.01%	28.01%
TCS	2149.40	-49.50	-2.25%	65.37	1411	3538	39.25%	2143	0.28%	-10.23%	-36.49%
TECHM	1498.00	14.50	0.98%	24.68	369	1854	19.20%	1304	14.87%	2.39%	-4.65%
TITAN	4187.00	-73.20	-1.72%	6.67	280	4605	9.08%	3303	26.76%	-7.14%	17.62%
TMPV	389.00	-8.80	-2.21%	75.86	296	744	47.72%	294	32.18%	9.44%	-45.29%
TRENT	2715.00	-59.20	-2.13%	9.55	263	4174	34.95%	2184	24.33%	-4.00%	-29.50%
ULTRACEMCO	10760.00	-152.00	-1.39%	2.86	309	13110	17.93%	10325	4.21%	-9.96%	-4.38%
WIPRO	181.60	-16.77	-8.45%	751.64	1397	273	33.50%	181	0.33%	-8.24%	-26.95%

Disclaimer / Disclosures

ANALYST CERTIFICATION

I, Mrs. Vaishali Parekh B.com, Research Analyst, author and the name subscribed to this report, hereby certify that all of the views expressed in this research report accurately reflect our views about the subject issuer(s) or securities. We also certify that no part of our compensation was, is, or will be directly or indirectly related to the specific recommendation(s) or view(s) in this report.

Terms & conditions and other disclosures:

Prabhudas Lilladher Pvt. Ltd, Mumbai, India (hereinafter referred to as "PL") is engaged in the business of Stock Broking, Portfolio Manager, Depository Participant and distribution for third party financial products. PL is a subsidiary of Prabhudas Lilladher Advisory Services Pvt Ltd. which has its various subsidiaries engaged in business of commodity broking, investment banking, financial services (margin funding) and distribution of third party financial/other products, details in respect of which are available at www.plindia.com

This document has been prepared by the Research Division of PL and is meant for use by the recipient only as information and is not for circulation. This document is not to be reported or copied or made available to others without prior permission of PL. It should not be considered or taken as an offer to sell or a solicitation to buy or sell any security.

The information contained in this report has been obtained from sources that are considered to be reliable. However, PL has not independently verified the accuracy or completeness of the same. Neither PL nor any of its affiliates, its directors or its employees accepts any responsibility of whatsoever nature for the information, statements and opinion given, made available or expressed herein or for any omission therein.

Recipients of this report should be aware that past performance is not necessarily a guide to future performance and value of investments can go down as well. The suitability or otherwise of any investments will depend upon the recipient's particular circumstances and, in case of doubt, advice should be sought from an independent expert/advisor.

Either PL or its affiliates or its directors or its employees or its representatives or its clients or their relatives may have position(s), make market, act as principal or engage in transactions of securities of companies referred to in this report and they may have used the research material prior to publication.

PL may from time to time solicit or perform investment banking or other services for any company mentioned in this document.

PL is registered as Research Analyst under Securities and Exchange Board of India (Research Analysts) Regulations, 2014 PL submits that no material disciplinary action has been taken on us by any Regulatory Authority impacting Equity Research Analysis activities.

PL or its research analysts or its associates or his relatives do not have any financial interest in the subject company.

PL or its research analysts or its associates or his relatives do not have actual/beneficial ownership of one per cent or more securities of the subject company at the end of the month immediately preceding the date of publication of the research report.

PL or its research analysts or its associates or his relatives do not have any material conflict of interest at the time of publication of the research report.

PL or its associates might have received compensation from the subject company in the past twelve months.

PL or its associates might have managed or co-managed public offering of securities for the subject company in the past twelve months or mandated by the subject company for any other assignment in the past twelve months.

PL or its associates might have received any compensation for investment banking or merchant banking or brokerage services from the subject company in the past twelve months.

PL or its associates might have received any compensation for products or services other than investment banking or merchant banking or brokerage services from the subject company in the past twelve months PL or its associates might have received any compensation or other benefits from the subject company or third party in connection with the research report.

PL encourages independence in research report preparation and strives to minimize conflict in preparation of research report. PL or its analysts did not receive any compensation or other benefits from the subject Company or third party in connection with the preparation of the research report. PL or its Research Analysts do not have any material conflict of interest at the time of publication of this report.

It is confirmed that Mrs. Vaishali Parekh B.com, Research Analyst of this report has not received any compensation from the companies mentioned in the report in the preceding twelve months compensation of our Research Analysts is not based on any specific merchant banking, investment banking or brokerage service transactions.

The Research analysts for this report certifies that all of the views expressed in this report accurately reflect his or her personal views about the subject company or companies and its or their securities, and no part of his or her compensation was, is or will be, directly or indirectly related to specific recommendations or views expressed in this report.

The research analysts for this report has not served as an officer, director or employee of the subject company PL or its research analysts have not engaged in market making activity for the subject company

Our sales people, traders, and other professionals or affiliates may provide oral or written market commentary or trading strategies to our clients that reflect opinions that are contrary to the opinions expressed herein, and our proprietary trading and investing businesses may make investment decisions that are inconsistent with the recommendations expressed herein. In reviewing these materials, you should be aware that any or all of the foregoing, among other things, may give rise to real or potential conflicts of interest.

PL and its associates, their directors and employees may (a) from time to time, have a long or short position in, and buy or sell the securities of the subject company or (b) be engaged in any other transaction involving such securities and earn brokerage or other compensation or act as a market maker in the financial instruments of the subject company or act as an advisor or lender/borrower to the subject company or may have any other potential conflict of interests with respect to any recommendation and other related information and opinions.

Regd. Office: 3rd Floor, Sadhana House, 570, P. B. Marg, Behind Mahindra Tower, Worli, Mumbai - 400 018, India.