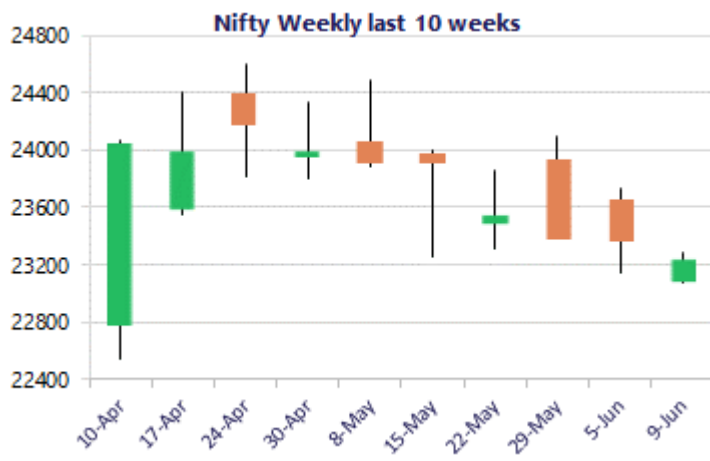
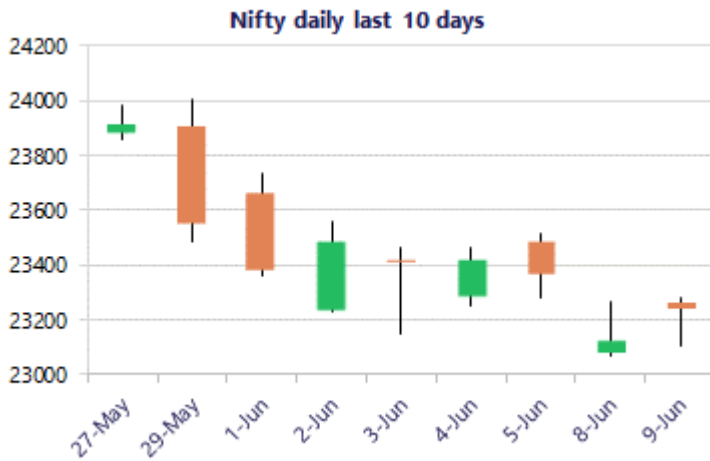


\* Sensex 73918.76 + 394.50

\* Nifty 23242.10 + 119.10

\* Bank Nifty 55194.50 + 1130.75



\*Blue candle → Close rate > Open rate \* Red candle → Close rate < Open rate

### Nifty recovers to end near 23250 zone

Nifty after a volatile session in the first half recovered strongly in the later part to end near 23250 zone on an optimistic note for the coming sessions. BankNifty witnessed a strong revival to improve the bias and sentiment to close above the 55000 zone anticipating for further rise. The market breadth was strong with the advance decline indicating a ratio of 5:2 at close.

### Market Forecast

#### Nifty daily range 23000 - 23500

Nifty witnessed some fluctuations during the session hitting the low near 23100 zone and thereafter, witnessing a decent recovery with active participation from the broader markets helping the index to gain momentum and closed in the green near 23250 zone. As said earlier, it's important the index sustain the near-term support of 23000 zone to maintain the overall bias intact and attempt for a decisive breach above the 50EMA level at 23800 zone to establish conviction and anticipate for further rise in the coming days.

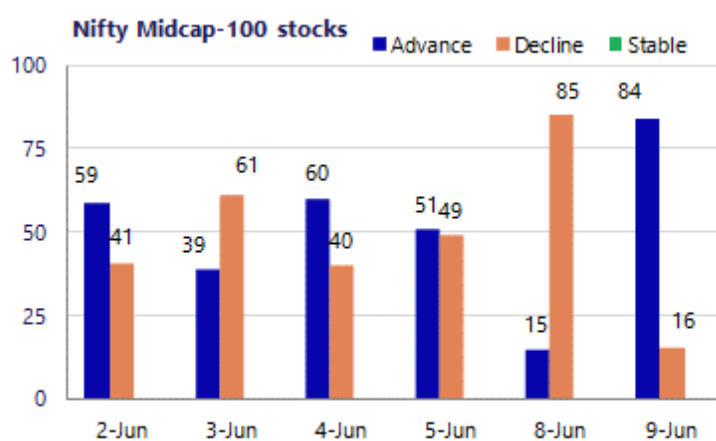
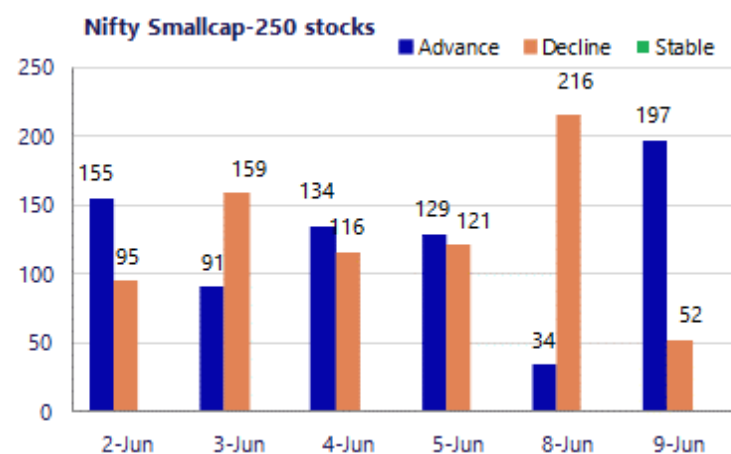
BankNifty indicated a strong bullish candle on the daily chart to move past the important 50EMA level at 54970 zone improving the bias and outperforming the Nifty index with frontline banking stocks like SBI, ICICI Bank and Axis Bank leading among the gainers. The index would need to gain further to arrive near the important 200 period MA at 57000 level to establish conviction and thereafter, expect for further upward move in the coming days having the 53500 zone as the major and crucial support zone.

The support for the day is seen at 23000 levels, while the resistance is seen at 23500 levels. BankNifty would have the daily range of 54500-56000 levels.

Sensex	Period	Closing	% Chng	Trend	Reversal	2 Sup	1 Sup	Pivot	1 Res	2 Res
Nifty	Daily	23242.10	0.52%	-8	23267.00	23034	23138	23209	23313	23384
	Weekly	23366.70	-0.77%	-2	23611.40	22835	23101	23417	23683	24000
	Monthly	23547.75	-1.87%	-5	25345.55	22545	23046	23764	24266	24984
Bank Nifty	Daily	55194.50	2.09%	1	54182.20	53842	54518	54918	55594	55994
	Weekly	54496.25	0.47%	-4	54448.50	52296	53396	54127	55227	55958
	Monthly	54239.20	-1.14%	-3	60590.40	50902	52570	54452	56121	58003
Sensex	Daily	73918.76	0.54%	-8	73931.90	73184	73551	73793	74161	74403
	Weekly	74243.34	-0.71%	-3	75072.35	72493	73368	74368	75243	76243
	Monthly	74775.74	-2.78%	-5	81359.20	71515	73145	75765	77395	80015

### Gainers - Losers ( Nifty 500 Stocks )

Gainers				Losers			
Company Name	Last Price	% Gain	Volume	Company Name	Last Price	% Loss	Volume
Data Patterns	4558.5	10.07%	4127623	Tata Tech	745.10	-4.43%	1783652
Cemindia Proj	1,203.80	10.00%	1749059	Schneider Infra	1097.8	-3.95%	418302
Belrise Ind	234.73	8.81%	35598970	Acutaas Chem	3,198.70	-3.54%	378466
Jain Resource	368.70	8.66%	20590766	Zee Entertain	107.62	-3.12%	42715992
LT Technology	3,417.70	7.98%	331860	Zydus Wellness	509.25	-2.72%	765584
Gabriel India	1,054.30	7.47%	863773	Anupam Rasayan	1267.2	-2.67%	179657
PI Industries	2,866.40	6.92%	1648437	Krishna Inst.	781.6	-2.45%	983941



### Nifty Daily chart with RSI indicator



### BankNifty Daily chart with RSI indicator



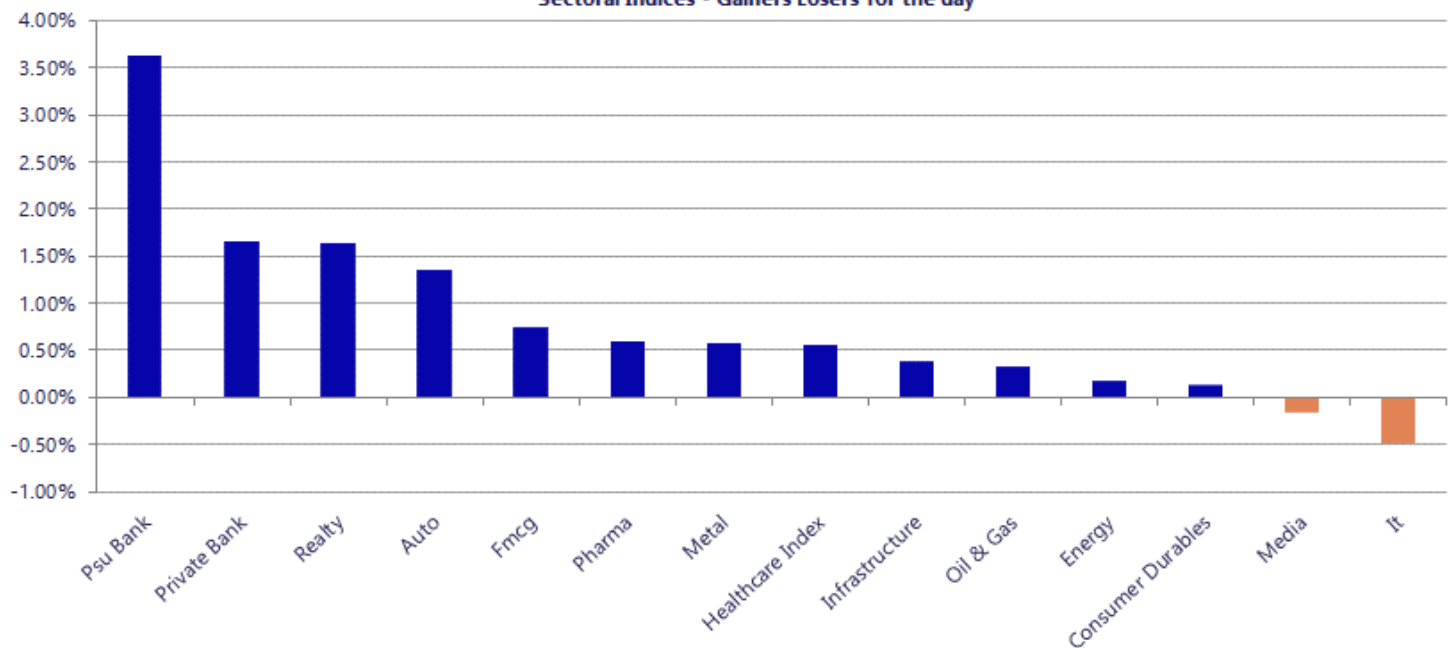
Breakouts - Cross above 200 DMA			
Company Name	LCP	Change %	200 DMA
Morepen Lab	48.65	12.07	43.41
Kilitch Drugs	187.01	10.00	170.01
ANDHRSUGAR	85.82	9.39	78.45
Bhagiradh Chem	257.89	9.33	235.88
Orissa Bengal C	58.71	5.82	55.48
SOLARA ACTIVE P	580	5.79	548.28
Commercial Syn	161.89	5.75	153.09
Cera Sanitary	5835	5.67	5521.68
Network People	1572.8	5.15	1495.76
Amines Plast	197.68	4.76	188.69
Asahi Songwon	262.8	4.08	252.5
Bank of India	147.72	3.90	142.18
Superhouse	159.63	3.51	154.22
Chemcon Special	205.94	3.49	199
Tribhovandas	169.63	3.37	164.1
Arman Financial	1609.1	3.24	1558.59
HDFCPSUBK	86.21	3.15	83.58
BANKPSU	85.85	3.15	83.23

\* Stocks crossing above its Simple Moving Average (200DMA)

Breakdown - Cross below 200 DMA			
Company Name	LCP	Change %	200 DMA
Kandarp Digi	119.85	-6.14	127.69
Udayshivakumar	24.35	-4.73	25.56
Semac Construct	334.8	-3.68	347.58
Pushpa Jeweller	112.4	-3.54	116.53
WOL 3D India	142.9	-2.38	146.38
Holmarc Opto Me	101.65	-1.91	103.63
GNA Axles	348.8	-1.89	355.52
JSW Dulux	3116.8	-1.21	3155.02
Rachana Infra	34.9	-0.85	35.2
Tech Mahindra	1483.8	-0.71	1494.36
Sarda Energy	532.95	-0.69	536.64
Kanpur Plast	196.13	-0.60	197.32
Health X Plat	293.2	-0.48	294.61
Rossell India	54.47	-0.26	54.61
GAIL	167.59	-0.26	168.02
Bannariamman	3600	-0.25	3609.02
Power Grid Corp	285.7	-0.06	285.88
Sambhv Steel	106.36	-0.04	106.4

\* Stocks crossing below its Simple Moving Average (200DMA)

Sectoral Indices - Gainers Losers for the day



Nifty 50 Stocks - Summary Details											
Symbol	LTP	Chng	% Chng	Volume (lacs)	Turnover (crs.)	52w High	Diff with 52w H	52w Low	Diff with 52w L	365 days % chng	30 days % chng
NIFTY 50	23242.10	119.10	0.52%	4025.53	32911	26373	11.87%	22183	4.78%	-3.86%	-7.41%
ADANIENT	2973.60	3.60	0.12%	18.42	548	3060	2.82%	1753	69.63%	18.66%	18.62%
ADANIPTS	1825.40	20.40	1.13%	17.76	322	1843	0.94%	1291	41.45%	3.69%	24.42%
APOLLOHOSP	8530.00	171.50	2.05%	8.18	694	8539	0.10%	6697	27.38%	5.35%	23.05%
ASIANPAINT	2707.00	47.80	1.80%	14.17	382	2986	9.33%	2115	27.99%	4.12%	20.42%
AXISBANK	1294.40	26.30	2.07%	75.34	969	1418	8.74%	1043	24.16%	2.06%	6.11%
BAJAJ-AUTO	10200.00	-31.00	-0.30%	3.13	321	10834	5.85%	7859	29.80%	-4.78%	18.04%
BAJAJFINSV	1689.20	14.60	0.87%	5.68	96	2195	23.04%	1597	5.77%	-7.10%	-16.27%
BAJFINANCE	886.90	15.80	1.81%	91.83	811	1103	19.56%	788	12.57%	-7.16%	-7.69%
BEL	412.55	-0.40	-0.10%	109.96	453	473	12.86%	361	14.22%	-6.17%	5.12%
BHARTIARTL	1798.00	-15.30	-0.84%	103.77	1873	2175	17.31%	1741	3.30%	-1.99%	-3.60%
CIPLA	1374.00	-13.90	-1.00%	14.20	196	1673	17.87%	1166	17.87%	2.00%	-8.80%
COALINDIA	466.15	1.25	0.27%	109.72	509	491	5.11%	369	26.45%	2.14%	16.25%
DRREDDY	1270.30	-5.30	-0.42%	8.72	111	1380	7.93%	1148	10.61%	-1.82%	-3.70%
EICHERMOT	7185.00	135.00	1.91%	5.47	394	8230	12.70%	5220	37.66%	-1.61%	33.28%
ETERNAL	245.45	-2.85	-1.15%	333.28	819	368	33.38%	213	15.45%	-4.27%	-4.43%
GRASIM	3096.00	45.90	1.50%	9.23	286	3198	3.17%	2503	23.72%	4.29%	18.69%
HCLTECH	1148.30	-3.00	-0.26%	22.26	254	1780	35.49%	1103	4.07%	-4.18%	-30.33%
HDFCBANK	739.70	1.05	0.14%	385.40	2846	1021	27.52%	727	1.80%	-5.27%	-25.24%
HDFCLIFE	560.00	-4.55	-0.81%	34.64	195	821	31.77%	555	0.88%	-9.92%	-26.35%
HINDALCO	1074.00	11.60	1.09%	58.80	630	1176	8.67%	635	69.13%	2.83%	65.03%
HINDUNILVR	2134.90	24.80	1.18%	14.61	311	2750	22.37%	2023	5.56%	-6.68%	-10.79%
ICICIBANK	1276.00	25.80	2.06%	223.69	2844	1500	14.93%	1188	7.44%	0.89%	-11.07%
INDIGO	4531.70	172.00	3.95%	10.00	449	6233	27.29%	3895	16.34%	0.20%	-20.43%
INFY	1181.70	-5.90	-0.50%	109.84	1292	1728	31.61%	1089	8.51%	0.21%	-24.87%
ITC	280.00	0.55	0.20%	123.03	344	429	34.66%	275	1.80%	-8.93%	-33.81%
JIOFIN	234.20	5.34	2.33%	99.60	232	339	30.83%	223	4.88%	-6.07%	-23.02%
JSWSTEEL	1259.10	-1.60	-0.13%	10.71	135	1328	5.19%	981	28.30%	-1.46%	24.91%
KOTAKBANK	382.15	5.05	1.34%	139.88	532	453	15.68%	346	10.61%	0.35%	-10.64%
LT	3904.00	28.50	0.74%	15.07	588	4440	12.07%	3288	18.73%	-1.77%	6.12%
M&M	2997.90	31.90	1.08%	25.27	757	3840	21.93%	2896	3.52%	-9.98%	-2.90%
MARUTI	13119.00	207.00	1.60%	4.28	556	17370	24.47%	12176	7.74%	-4.42%	3.81%
MAXHEALTH	1003.00	-4.45	-0.44%	30.57	307	1314	23.69%	903	11.07%	-0.94%	-16.04%
NESTLEIND	1409.90	11.00	0.79%	12.99	183	1498	5.89%	1085	29.98%	-4.89%	16.75%
NTPC	355.95	-6.45	-1.78%	142.47	508	414	14.10%	316	12.80%	-11.49%	5.59%
ONGC	259.55	-5.10	-1.93%	107.96	282	308	15.59%	229	13.53%	-7.04%	6.90%
POWERGRID	285.50	-4.80	-1.65%	79.73	229	325	12.14%	250	14.20%	-9.06%	-4.99%
RELIANCE	1272.30	9.00	0.71%	236.20	2987	1612	21.06%	1258	1.18%	-11.35%	-12.18%
SBILIFE	1768.00	3.60	0.20%	8.58	152	2132	17.07%	1720	2.79%	-5.56%	-1.27%
SBIN	1004.10	22.15	2.26%	221.42	2210	1235	18.68%	782	28.45%	-1.49%	22.44%
SHRIRAMFIN	912.10	15.45	1.72%	58.93	535	1108	17.68%	567	61.01%	-9.49%	30.67%
SUNPHARMA	1780.00	-8.80	-0.49%	37.57	669	1917	7.13%	1548	14.99%	-3.67%	5.05%
TATACONSUM	1106.90	-0.10	-0.01%	7.57	84	1283	13.71%	1007	9.90%	-5.89%	-1.28%
TATASTEEL	203.49	0.77	0.38%	421.11	851	224	9.32%	150	35.84%	-5.13%	29.35%
TCS	2152.00	0.60	0.03%	41.49	891	3538	39.17%	2133	0.90%	-10.12%	-37.11%
TECHM	1486.50	-16.90	-1.12%	13.30	197	1854	19.82%	1304	13.99%	1.61%	-5.86%
TITAN	4100.00	-92.40	-2.20%	12.85	530	4605	10.97%	3303	24.13%	-9.07%	16.02%
TMPV	387.90	-1.10	-0.28%	85.51	333	744	47.86%	294	31.80%	9.13%	-45.96%
TRENT	2766.60	42.50	1.56%	14.97	415	4174	33.72%	2184	26.69%	-2.18%	-29.82%
ULTRACEMCO	10925.00	130.00	1.20%	2.57	280	13110	16.67%	10325	5.81%	-8.58%	-2.98%
WIPRO	181.90	0.14	0.08%	283.82	517	273	33.39%	181	0.72%	-8.09%	-27.61%

## Disclaimer / Disclosures

### ANALYST CERTIFICATION

I, Mrs. Vaishali Parekh B.com, Research Analyst, author and the name subscribed to this report, hereby certify that all of the views expressed in this research report accurately reflect our views about the subject issuer(s) or securities. We also certify that no part of our compensation was, is, or will be directly or indirectly related to the specific recommendation(s) or view(s) in this report.

Terms & conditions and other disclosures:

Prabhudas Lilladher Pvt. Ltd, Mumbai, India (hereinafter referred to as "PL") is engaged in the business of Stock Broking, Portfolio Manager, Depository Participant and distribution for third party financial products. PL is a subsidiary of Prabhudas Lilladher Advisory Services Pvt Ltd. which has its various subsidiaries engaged in business of commodity broking, investment banking, financial services (margin funding) and distribution of third party financial/other products, details in respect of which are available at [www.plindia.com](http://www.plindia.com)

This document has been prepared by the Research Division of PL and is meant for use by the recipient only as information and is not for circulation. This document is not to be reported or copied or made available to others without prior permission of PL. It should not be considered or taken as an offer to sell or a solicitation to buy or sell any security.

The information contained in this report has been obtained from sources that are considered to be reliable. However, PL has not independently verified the accuracy or completeness of the same. Neither PL nor any of its affiliates, its directors or its employees accepts any responsibility of whatsoever nature for the information, statements and opinion given, made available or expressed herein or for any omission therein.

Recipients of this report should be aware that past performance is not necessarily a guide to future performance and value of investments can go down as well. The suitability or otherwise of any investments will depend upon the recipient's particular circumstances and, in case of doubt, advice should be sought from an independent expert/advisor.

Either PL or its affiliates or its directors or its employees or its representatives or its clients or their relatives may have position(s), make market, act as principal or engage in transactions of securities of companies referred to in this report and they may have used the research material prior to publication.

PL may from time to time solicit or perform investment banking or other services for any company mentioned in this document.

PL is registered as Research Analyst under Securities and Exchange Board of India (Research Analysts) Regulations, 2014 PL submits that no material disciplinary action has been taken on us by any Regulatory Authority impacting Equity Research Analysis activities.

PL or its research analysts or its associates or his relatives do not have any financial interest in the subject company.

PL or its research analysts or its associates or his relatives do not have actual/beneficial ownership of one per cent or more securities of the subject company at the end of the month immediately preceding the date of publication of the research report.

PL or its research analysts or its associates or his relatives do not have any material conflict of interest at the time of publication of the research report.

PL or its associates might have received compensation from the subject company in the past twelve months.

PL or its associates might have managed or co-managed public offering of securities for the subject company in the past twelve months or mandated by the subject company for any other assignment in the past twelve months.

PL or its associates might have received any compensation for investment banking or merchant banking or brokerage services from the subject company in the past twelve months.

PL or its associates might have received any compensation for products or services other than investment banking or merchant banking or brokerage services from the subject company in the past twelve months PL or its associates might have received any compensation or other benefits from the subject company or third party in connection with the research report.

PL encourages independence in research report preparation and strives to minimize conflict in preparation of research report. PL or its analysts did not receive any compensation or other benefits from the subject Company or third party in connection with the preparation of the research report. PL or its Research Analysts do not have any material conflict of interest at the time of publication of this report.

It is confirmed that Mrs. Vaishali Parekh B.com, Research Analyst of this report has not received any compensation from the companies mentioned in the report in the preceding twelve months compensation of our Research Analysts is not based on any specific merchant banking, investment banking or brokerage service transactions.

The Research analysts for this report certifies that all of the views expressed in this report accurately reflect his or her personal views about the subject company or companies and its or their securities, and no part of his or her compensation was, is or will be, directly or indirectly related to specific recommendations or views expressed in this report.

The research analysts for this report has not served as an officer, director or employee of the subject company PL or its research analysts have not engaged in market making activity for the subject company

Our sales people, traders, and other professionals or affiliates may provide oral or written market commentary or trading strategies to our clients that reflect opinions that are contrary to the opinions expressed herein, and our proprietary trading and investing businesses may make investment decisions that are inconsistent with the recommendations expressed herein. In reviewing these materials, you should be aware that any or all of the foregoing, among other things, may give rise to real or potential conflicts of interest.

PL and its associates, their directors and employees may (a) from time to time, have a long or short position in, and buy or sell the securities of the subject company or (b) be engaged in any other transaction involving such securities and earn brokerage or other compensation or act as a market maker in the financial instruments of the subject company or act as an advisor or lender/borrower to the subject company or may have any other potential conflict of interests with respect to any recommendation and other related information and opinions.

**Regd. Office:** 3<sup>rd</sup> Floor, Sadhana House, 570, P. B. Marg, Behind Mahindra Tower, Worli, Mumbai - 400 018, India.