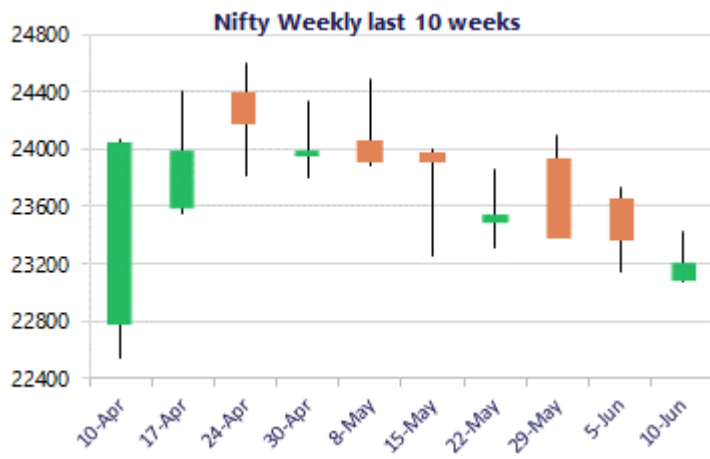
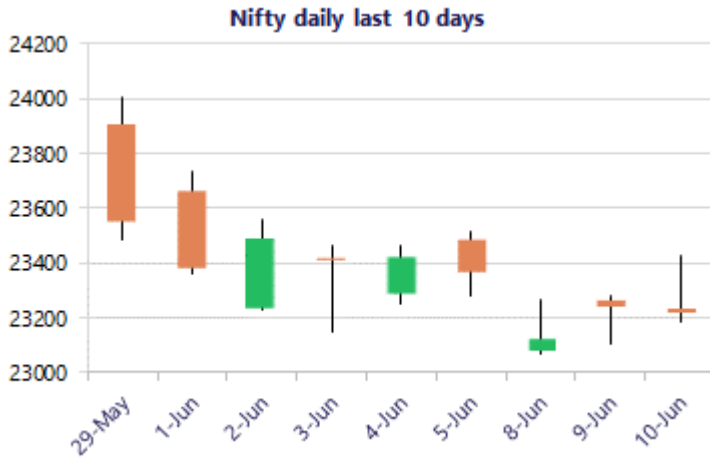


* Sensex 73983.18 +64.42

* Nifty 23214.95 -27.15

* Bank Nifty 55100.30 -94.20



*Blue candle → Close rate > Open rate * Red candle → Close rate < Open rate

Nifty fizzles out from 23400 zone

Nifty witnessed heavy profit booking from 23400 zone after having a positive first half of the trading session to slip down and close near the 23200 level. BankNifty reached the previous high of 55550 zone but fizzled out to erase the gains and closed near the 55100 level with the bias maintained with a cautiously positive approach. The market breadth turned weak with the advance decline indicating a ratio of 2:5 at close.

Market Forecast

Nifty daily range 23000 - 23400

Nifty was once again subjected to high volatility during the intraday session with the initial half witnessing some positive move reaching the high of 23425 zone while post lunch, it erased the gains on the back of heavy profit booking to end the session in the red near the 23200 zone with bias and sentiment continue to be precariously placed. As mentioned earlier, the index would need to sustain the near-term support of 23000 zone to maintain the overall bias intact and on the upside, would desperately require a decisive breach above the 50EMA level at 23800 zone to establish conviction and clarity.

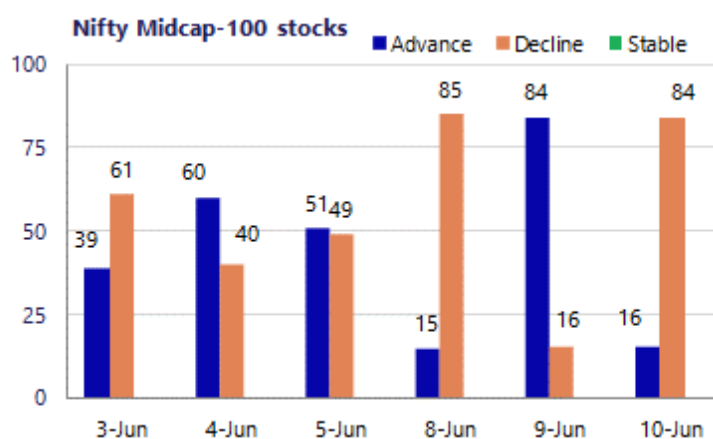
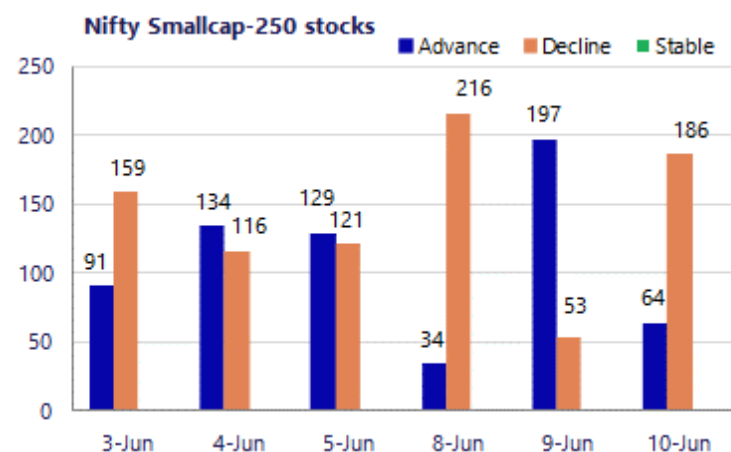
BankNifty indicated positive bias in the morning session achieving the previous high level of 55555 and thereafter, witnessed heavy profit booking to wipe off the gains and closed the session near 55100 level with the bias still maintained with a cautious approach. The major frontline banking stocks have shown improvement but still would need conviction with the index requiring to move past the initial hurdle of 56000 zone in the coming sessions to further improve the bias.

The support for the day is seen at 23000 levels, while the resistance is seen at 23400 levels. BankNifty would have the daily range of 54500-56000 levels.

Sensex	Period	Closing	% Chng	Trend	Reversal	2 Sup	1 Sup	Pivot	1 Res	2 Res
Nifty	Daily	23214.95	-0.12%	-9	23249.80	23034	23125	23275	23365	23516
	Weekly	23366.70	-0.77%	-2	23611.40	22835	23101	23417	23683	24000
	Monthly	23547.75	-1.87%	-5	25345.55	22545	23046	23764	24266	24984
Bank Nifty	Daily	55100.30	-0.17%	2	54476.70	54698	54899	55227	55429	55757
	Weekly	54496.25	0.47%	-4	54448.50	52296	53396	54127	55227	55958
	Monthly	54239.20	-1.14%	-3	60590.40	50902	52570	54452	56121	58003
Sensex	Daily	73983.18	0.09%	1	73919.35	73449	73716	74165	74432	74880
	Weekly	74243.34	-0.71%	-3	75072.35	72493	73368	74368	75243	76243
	Monthly	74775.74	-2.78%	-5	81359.20	71515	73145	75765	77395	80015

Gainers - Losers (Nifty 500 Stocks)

Gainers				Losers			
Company Name	Last Price	% Gain	Volume	Company Name	Last Price	% Loss	Volume
CarTrade Tech	2451.4	12.06%	7677237	Oil India	427.35	-10.21%	18169302
Chambal Fert	477.65	5.04%	4969287	Jain Resource	337.95	-8.34%	3716905
Afcons Infra	330.05	4.61%	28248047	IFCI	71.83	-6.80%	35150395
Concord Biotech	1,330.70	4.60%	1214704	Manappuram Fin	288.25	-6.18%	4677142
ABSL AMC	1,110.30	4.51%	626477	Jindal Saw	225.16	-6.11%	2607834
Travel Food Ser	1,235.70	4.35%	176721	NLC India	309.6	-5.54%	36594772
Coromandel Int	1,880.70	4.07%	623772	GE Shipping	1367.8	-5.16%	926647



Nifty Daily chart with RSI indicator



BankNifty Daily chart with RSI indicator



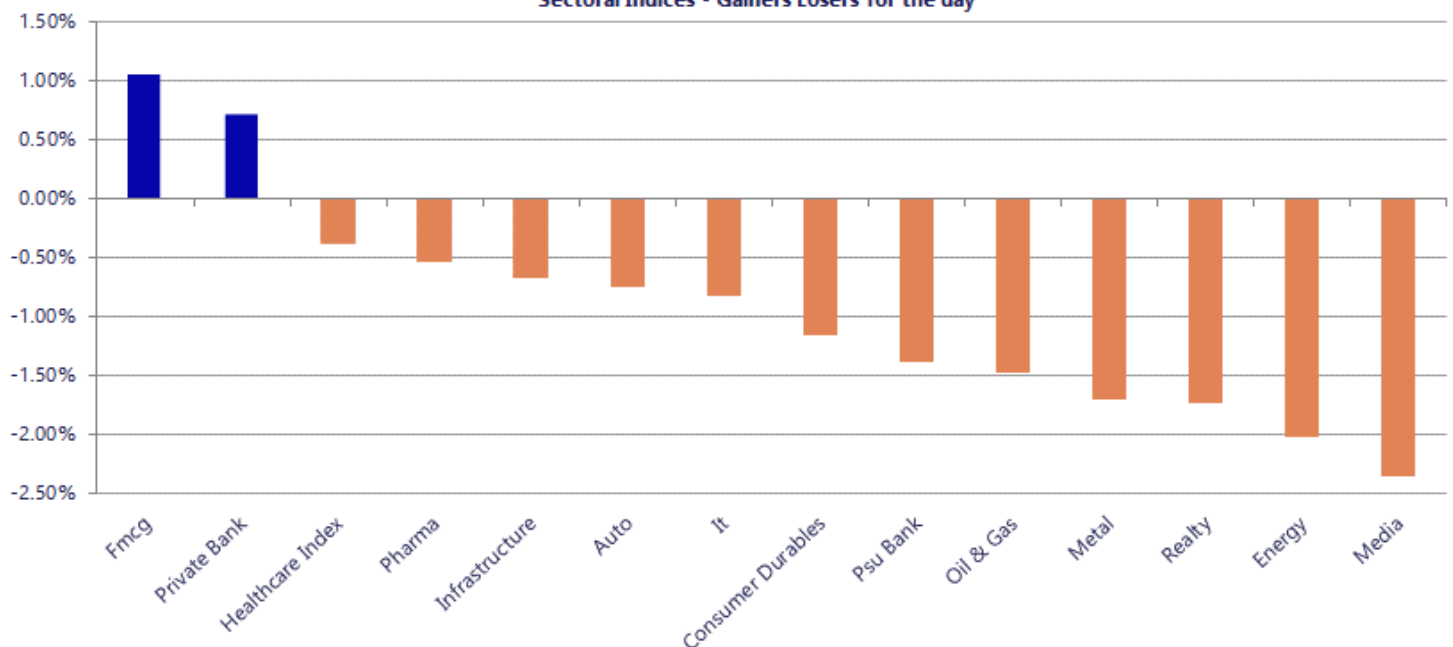
Breakouts - Cross above 200 DMA			
Company Name	LCP	Change %	200 DMA
Unichem Labs	437.4	5.07	416.28
Cartrade	2451.4	5.03	2334.03
Crest Ventures	379.7	4.49	363.37
Jainik Power	133.9	3.49	129.38
Holmarc Opto Me	106.7	3.04	103.55
Jay Jalaram	142.8	2.11	139.85
Berger Paints	516.7	2.02	506.46
RamkrishnaForge	556.1	2.00	545.21
Chambal Fert	477.65	1.95	468.52
HMT	55.87	1.90	54.83
Tasty Bite	8149.5	1.54	8025.58
Hinduja Global	450.35	0.94	446.14
JagsonpalPharma	204.53	0.87	202.77
Marvel Decor Lt	75.95	0.81	75.34
JSW Dulux	3175.6	0.69	3153.74
ICE Make Refrig	761.5	0.68	756.38
Nagreeka Export	27.01	0.52	26.87
Power Grid Corp	287.2	0.47	285.87

* Stocks crossing above its Simple Moving Average (200DMA)

Breakdown - Cross below 200 DMA			
Company Name	LCP	Change %	200 DMA
Agri-Tech	123.26	-4.29	128.78
Valiant Laborat	69.18	-3.92	72
Oil India	427.35	-3.88	444.59
VISA Chrome	42.95	-3.50	44.51
Coffee Day	33.13	-3.47	34.32
Paragon Fine &	46	-3.16	47.5
STC India	117.75	-2.57	120.85
Beardsell	28.13	-2.50	28.85
Poddar Pigments	251	-2.40	257.18
Canara Bank	133.46	-2.39	136.73
M TEK COPPER	57.52	-2.34	58.9
ONGC	251.9	-2.34	257.94
Hindprakash Ind	128.41	-2.33	131.48
Moschip Tech	204.72	-2.16	209.24
Siyaram Silk	606.35	-2.13	619.57
Vital Chemtech	54.33	-1.88	55.37
Oberoi Realty	1591.6	-1.87	1621.89
Prince Pipes	272.25	-1.73	277.04

* Stocks crossing below its Simple Moving Average (200DMA)

Sectoral Indices - Gainers Losers for the day



Nifty 50 Stocks - Summary Details											
Symbol	LTP	Chng	% Chng	Volume (lacs)	Turnover (crs.)	52w High	Diff with 52w H	52w Low	Diff with 52w L	365 days % chng	30 days % chng
NIFTY 50	23214.95	-27.15	-0.12%	3800.31	31907	26373	11.98%	22183	4.65%	-3.98%	-7.53%
ADANIENT	2940.00	-39.90	-1.34%	14.75	437	3060	3.92%	1753	67.71%	17.32%	15.89%
ADANIPTS	1820.00	-6.40	-0.35%	29.33	539	1858	2.03%	1291	41.03%	3.39%	23.49%
APOLLOHOSP	8480.00	-44.00	-0.52%	4.88	418	8624	1.67%	6697	26.63%	4.73%	22.57%
ASIANPAINT	2700.00	-8.10	-0.30%	13.96	381	2986	9.57%	2115	27.66%	3.85%	21.68%
AXISBANK	1314.00	21.60	1.67%	122.63	1612	1418	7.35%	1043	26.04%	3.60%	6.59%
BAJAJ-AUTO	10130.00	-54.00	-0.53%	2.94	299	10834	6.50%	7859	28.91%	-5.43%	17.44%
BAJAJFINSV	1663.00	-30.10	-1.78%	5.25	88	2195	24.24%	1597	4.13%	-8.54%	-16.77%
BAJFINANCE	885.05	-1.85	-0.21%	69.40	616	1103	19.72%	788	12.33%	-7.36%	-6.81%
BEL	408.15	-3.90	-0.95%	53.72	221	473	13.79%	361	13.00%	-7.18%	2.71%
BHARTIARTL	1776.90	-22.10	-1.23%	79.99	1431	2175	18.28%	1741	2.09%	-3.14%	-4.32%
CIPLA	1375.60	-0.90	-0.07%	9.63	133	1673	17.78%	1166	18.01%	2.12%	-8.95%
COALINDIA	451.30	-15.60	-3.34%	81.28	372	491	8.13%	369	22.42%	-1.12%	12.95%
DRREDDY	1272.00	3.50	0.28%	11.72	149	1380	7.81%	1148	10.76%	-1.69%	-5.69%
EICHERMOT	7205.00	2.00	0.03%	4.81	348	8230	12.45%	5220	38.04%	-1.34%	33.98%
ETERNAL	239.85	-5.80	-2.36%	236.88	575	368	34.90%	213	12.82%	-6.45%	-6.19%
GRASIM	3077.30	-18.20	-0.59%	7.93	246	3198	3.76%	2503	22.97%	3.66%	13.64%
HCLTECH	1130.90	-15.40	-1.34%	16.01	183	1780	36.47%	1103	2.49%	-5.63%	-32.20%
HDFCBANK	747.80	9.45	1.28%	444.58	3312	1021	26.72%	727	2.91%	-4.23%	-23.90%
HDFCLIFE	550.10	-10.50	-1.87%	30.75	171	821	32.98%	548	0.47%	-11.52%	-27.85%
HINDALCO	1040.00	-36.70	-3.41%	80.48	840	1176	11.56%	635	63.78%	-0.42%	57.97%
HINDUNILVR	2172.30	39.50	1.85%	23.26	508	2750	21.01%	2023	7.41%	-5.04%	-9.31%
ICICIBANK	1293.00	18.00	1.41%	259.52	3360	1500	13.80%	1188	8.88%	2.23%	-9.13%
INDIGO	4525.00	-12.60	-0.28%	5.40	245	6233	27.40%	3895	16.17%	0.05%	-19.18%
INFY	1144.00	-11.30	-0.98%	88.88	1026	1728	33.80%	1089	5.05%	-2.99%	-28.32%
ITC	283.30	3.30	1.18%	198.24	562	429	33.89%	275	3.00%	-7.85%	-33.65%
JIOFIN	230.50	-3.71	-1.58%	84.54	196	339	31.93%	223	3.22%	-7.56%	-23.88%
JSWSTEEL	1277.20	15.50	1.23%	30.53	390	1328	3.83%	981	30.15%	-0.05%	27.33%
KOTAKBANK	388.00	6.30	1.65%	214.27	832	453	14.39%	346	12.30%	1.89%	-9.81%
LT	3931.00	30.40	0.78%	20.33	800	4440	11.46%	3288	19.55%	-1.09%	6.83%
M&M	2952.90	-37.20	-1.24%	22.82	679	3840	23.10%	2896	1.96%	-11.33%	-3.74%
MARUTI	13072.00	-48.00	-0.37%	2.04	268	17370	24.74%	12176	7.36%	-4.76%	4.41%
MAXHEALTH	1008.00	4.90	0.49%	30.29	308	1314	23.31%	903	11.63%	-0.44%	-14.76%
NESTLEIND	1437.90	27.50	1.95%	22.89	330	1498	4.02%	1085	32.56%	-3.00%	18.28%
NTPC	351.55	-4.10	-1.15%	149.40	530	414	15.17%	316	11.41%	-12.58%	3.64%
ONGC	251.90	-7.10	-2.74%	101.76	260	308	18.08%	229	10.19%	-9.78%	2.95%
POWERGRID	287.05	1.35	0.47%	83.30	239	325	11.66%	250	14.82%	-8.57%	-4.65%
RELIANCE	1258.70	-10.50	-0.83%	210.13	2677	1612	21.91%	1254	0.34%	-12.30%	-12.50%
SBILIFE	1728.00	-41.10	-2.32%	11.49	202	2132	18.95%	1720	0.47%	-7.70%	-3.22%
SBIN	1000.85	-1.85	-0.18%	191.22	1925	1235	18.94%	782	28.04%	-1.81%	22.50%
SHRIRAMFIN	897.75	-13.95	-1.53%	40.26	365	1108	18.98%	567	58.47%	-10.92%	28.18%
SUNPHARMA	1787.10	8.10	0.46%	18.82	336	1917	6.76%	1548	15.45%	-3.29%	5.82%
TATACONSUM	1111.00	4.50	0.41%	22.03	246	1283	13.39%	1007	10.31%	-5.54%	-0.37%
TATASTEEL	198.75	-4.43	-2.18%	340.09	682	224	11.43%	150	32.68%	-7.34%	27.67%
TCS	2151.80	0.80	0.04%	28.49	616	3538	39.18%	2133	0.89%	-10.13%	-37.86%
TECHM	1479.00	-4.80	-0.32%	10.83	161	1854	20.23%	1304	13.41%	1.09%	-8.19%
TITAN	4041.00	-63.90	-1.56%	6.14	250	4605	12.25%	3303	22.34%	-10.38%	14.66%
TMPV	380.40	-7.40	-1.91%	72.51	278	744	48.87%	294	29.26%	7.02%	-48.05%
TRENT	2751.00	-20.30	-0.73%	15.88	445	4174	34.09%	2184	25.98%	-2.73%	-29.02%
ULTRACEMCO	10860.00	-51.00	-0.47%	4.70	512	13110	17.16%	10325	5.18%	-9.12%	-4.66%
WIPRO	178.64	-3.03	-1.67%	169.36	306	273	34.59%	179	0.08%	-9.74%	-29.91%

Disclaimer / Disclosures

ANALYST CERTIFICATION

I, Mrs. Vaishali Parekh B.com, Research Analyst, author and the name subscribed to this report, hereby certify that all of the views expressed in this research report accurately reflect our views about the subject issuer(s) or securities. We also certify that no part of our compensation was, is, or will be directly or indirectly related to the specific recommendation(s) or view(s) in this report.

Terms & conditions and other disclosures:

Prabhudas Lilladher Pvt. Ltd, Mumbai, India (hereinafter referred to as "PL") is engaged in the business of Stock Broking, Portfolio Manager, Depository Participant and distribution for third party financial products. PL is a subsidiary of Prabhudas Lilladher Advisory Services Pvt Ltd. which has its various subsidiaries engaged in business of commodity broking, investment banking, financial services (margin funding) and distribution of third party financial/other products, details in respect of which are available at www.plindia.com

This document has been prepared by the Research Division of PL and is meant for use by the recipient only as information and is not for circulation. This document is not to be reported or copied or made available to others without prior permission of PL. It should not be considered or taken as an offer to sell or a solicitation to buy or sell any security.

The information contained in this report has been obtained from sources that are considered to be reliable. However, PL has not independently verified the accuracy or completeness of the same. Neither PL nor any of its affiliates, its directors or its employees accepts any responsibility of whatsoever nature for the information, statements and opinion given, made available or expressed herein or for any omission therein.

Recipients of this report should be aware that past performance is not necessarily a guide to future performance and value of investments can go down as well. The suitability or otherwise of any investments will depend upon the recipient's particular circumstances and, in case of doubt, advice should be sought from an independent expert/advisor.

Either PL or its affiliates or its directors or its employees or its representatives or its clients or their relatives may have position(s), make market, act as principal or engage in transactions of securities of companies referred to in this report and they may have used the research material prior to publication.

PL may from time to time solicit or perform investment banking or other services for any company mentioned in this document.

PL is registered as Research Analyst under Securities and Exchange Board of India (Research Analysts) Regulations, 2014 PL submits that no material disciplinary action has been taken on us by any Regulatory Authority impacting Equity Research Analysis activities.

PL or its research analysts or its associates or his relatives do not have any financial interest in the subject company.

PL or its research analysts or its associates or his relatives do not have actual/beneficial ownership of one per cent or more securities of the subject company at the end of the month immediately preceding the date of publication of the research report.

PL or its research analysts or its associates or his relatives do not have any material conflict of interest at the time of publication of the research report.

PL or its associates might have received compensation from the subject company in the past twelve months.

PL or its associates might have managed or co-managed public offering of securities for the subject company in the past twelve months or mandated by the subject company for any other assignment in the past twelve months.

PL or its associates might have received any compensation for investment banking or merchant banking or brokerage services from the subject company in the past twelve months.

PL or its associates might have received any compensation for products or services other than investment banking or merchant banking or brokerage services from the subject company in the past twelve months PL or its associates might have received any compensation or other benefits from the subject company or third party in connection with the research report.

PL encourages independence in research report preparation and strives to minimize conflict in preparation of research report. PL or its analysts did not receive any compensation or other benefits from the subject Company or third party in connection with the preparation of the research report. PL or its Research Analysts do not have any material conflict of interest at the time of publication of this report.

It is confirmed that Mrs. Vaishali Parekh B.com, Research Analyst of this report has not received any compensation from the companies mentioned in the report in the preceding twelve months compensation of our Research Analysts is not based on any specific merchant banking, investment banking or brokerage service transactions.

The Research analysts for this report certifies that all of the views expressed in this report accurately reflect his or her personal views about the subject company or companies and its or their securities, and no part of his or her compensation was, is or will be, directly or indirectly related to specific recommendations or views expressed in this report.

The research analysts for this report has not served as an officer, director or employee of the subject company PL or its research analysts have not engaged in market making activity for the subject company

Our sales people, traders, and other professionals or affiliates may provide oral or written market commentary or trading strategies to our clients that reflect opinions that are contrary to the opinions expressed herein, and our proprietary trading and investing businesses may make investment decisions that are inconsistent with the recommendations expressed herein. In reviewing these materials, you should be aware that any or all of the foregoing, among other things, may give rise to real or potential conflicts of interest.

PL and its associates, their directors and employees may (a) from time to time, have a long or short position in, and buy or sell the securities of the subject company or (b) be engaged in any other transaction involving such securities and earn brokerage or other compensation or act as a market maker in the financial instruments of the subject company or act as an advisor or lender/borrower to the subject company or may have any other potential conflict of interests with respect to any recommendation and other related information and opinions.

Regd. Office: 3rd Floor, Sadhana House, 570, P. B. Marg, Behind Mahindra Tower, Worli, Mumbai - 400 018, India.