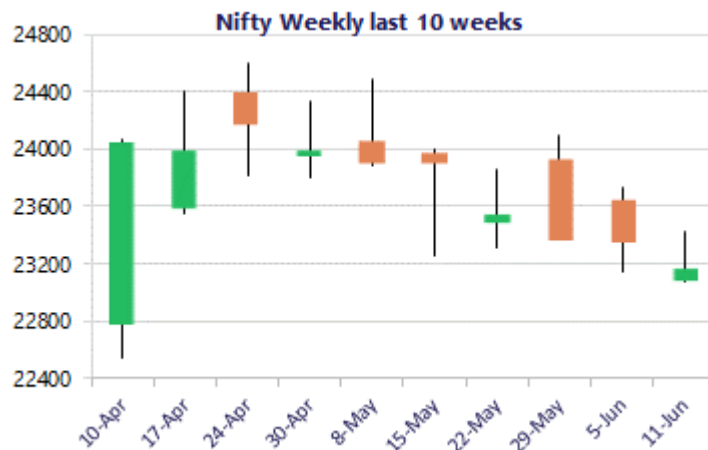
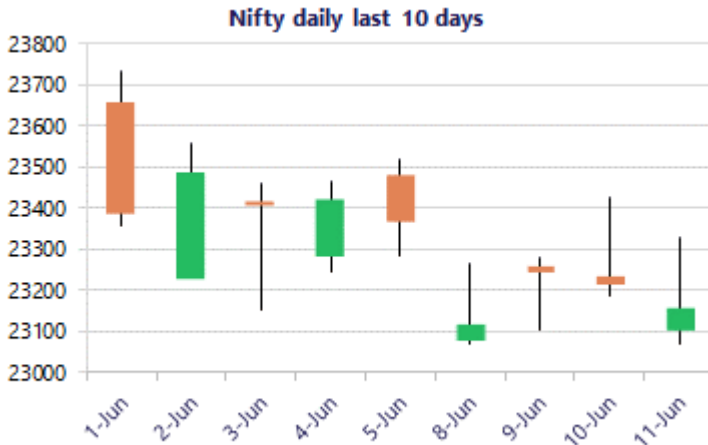


\* Sensex 73832.55 -150.63

\* Nifty 23161.60 -53.35

\* Bank Nifty 55176.75 +76.45



\*Blue candle → Close rate > Open rate \* Red candle → Close rate < Open rate

### Nifty consolidates near 23200 zone

Nifty amid some volatility witnessed a rangebound session finding resistance near the 23300 zone and closed in the red near 23150 level. BankNifty once again failed to move past the 55550 zone and ended the session near 55150 level with anticipation of further upward move in the coming sessions. The market breadth was weak with the advance decline indicating a ratio of 2:5 at close.

### Market Forecast

#### Nifty daily range 23000 - 23400

Nifty opened on a weak note at the lower end near 23100 zone and amid fluctuations resisted near the 23300 level and with profit booking seen in the second half ended the session near 23150 zone with the bias and sentiment continuing to be precariously placed. The index is hovering near the crucial zone having the near-term support of 23000 zone which needs to be sustained to maintain the overall bias intact and, on the upside, would desperately require a decisive breach above the 50EMA level at 23800 zone to establish conviction and clarity.

BankNifty after opening in the red near the 54800 zone, the index witnessed a revival but failed to move past the resistance hurdle of 55600 zone and closed the session near the 55150 level with profit booking seen in the final hours. With the sentiment and bias still maintained with a cautious approach, the index would have the crucial and major support at 53000 zone which needs to be sustained to maintain the overall bias intact.

The support for the day is seen at 23000 levels, while the resistance is seen at 23400 levels. BankNifty would have the daily range of 54500-56000 levels.

Sensex	Period	Closing	% Chng	Trend	Reversal	2 Sup	1 Sup	Pivot	1 Res	2 Res
	Daily	23161.60	-0.23%	-10	23206.20	22932	23047	23187	23302	23442
Nifty	Weekly	23366.70	-0.77%	-2	23611.40	22835	23101	23417	23683	24000
	Monthly	23547.75	-1.87%	-5	25345.55	22545	23046	23764	24266	24984
Bank Nifty	Daily	55176.75	0.14%	3	54727.55	54330	54753	55177	55600	56024
	Weekly	54496.25	0.47%	-4	54448.50	52296	53396	54127	55227	55958
	Monthly	54239.20	-1.14%	-3	60590.40	50902	52570	54452	56121	58003
	Daily	73832.55	-0.20%	-1	73853.50	73040	73436	73915	74312	74791
Sensex	Weekly	74243.34	-0.71%	-3	75072.35	72493	73368	74368	75243	76243
	Monthly	74775.74	-2.78%	-5	81359.20	71515	73145	75765	77395	80015

**Gainers - Losers ( Nifty 500 Stocks )**
**Gainers**

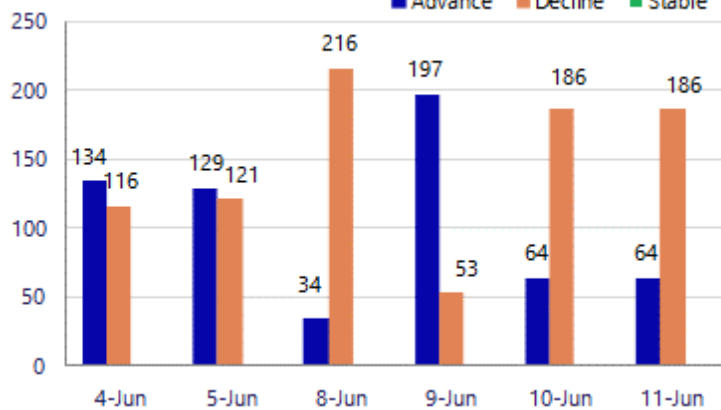
Company Name	Last Price	% Gain	Volume
Aegis Logistics	925.9	15.59%	40729363
Zee Entertain	111.45	8.28%	147507343
DOMS Industries	2255.4	6.46%	826941
Allied Blenders	608.45	6.43%	1306233
Blue Jet	498.45	6.11%	5912431
Wockhardt	1,923.80	4.95%	3309525
Poly Medicure	1,478.90	4.33%	465362

**Losers**

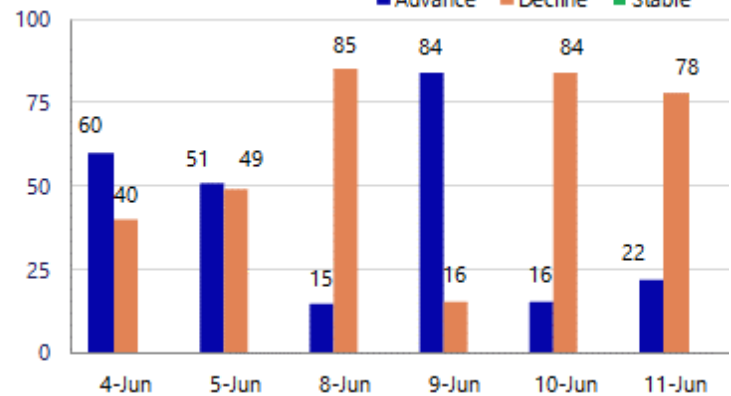
Company Name	Last Price	% Loss	Volume
Jain Resource	305.25	-9.68%	7416235
Balkrishna Ind	1974	-5.24%	233996
CCL Products	1,133.10	-5.05%	709130
Cemindia Proj	1,175.30	-5.00%	699687
MRPL	155.70	-4.84%	6935374
Sapphire Foods	166.91	-4.57%	2344656
Adani Energy	1466.7	-4.49%	2013886

**Nifty Smallcap-250 stocks**

■ Advance ■ Decline ■ Stable


**Nifty Midcap-100 stocks**

■ Advance ■ Decline ■ Stable



### Nifty Daily chart with RSI indicator



### BankNifty Daily chart with RSI indicator

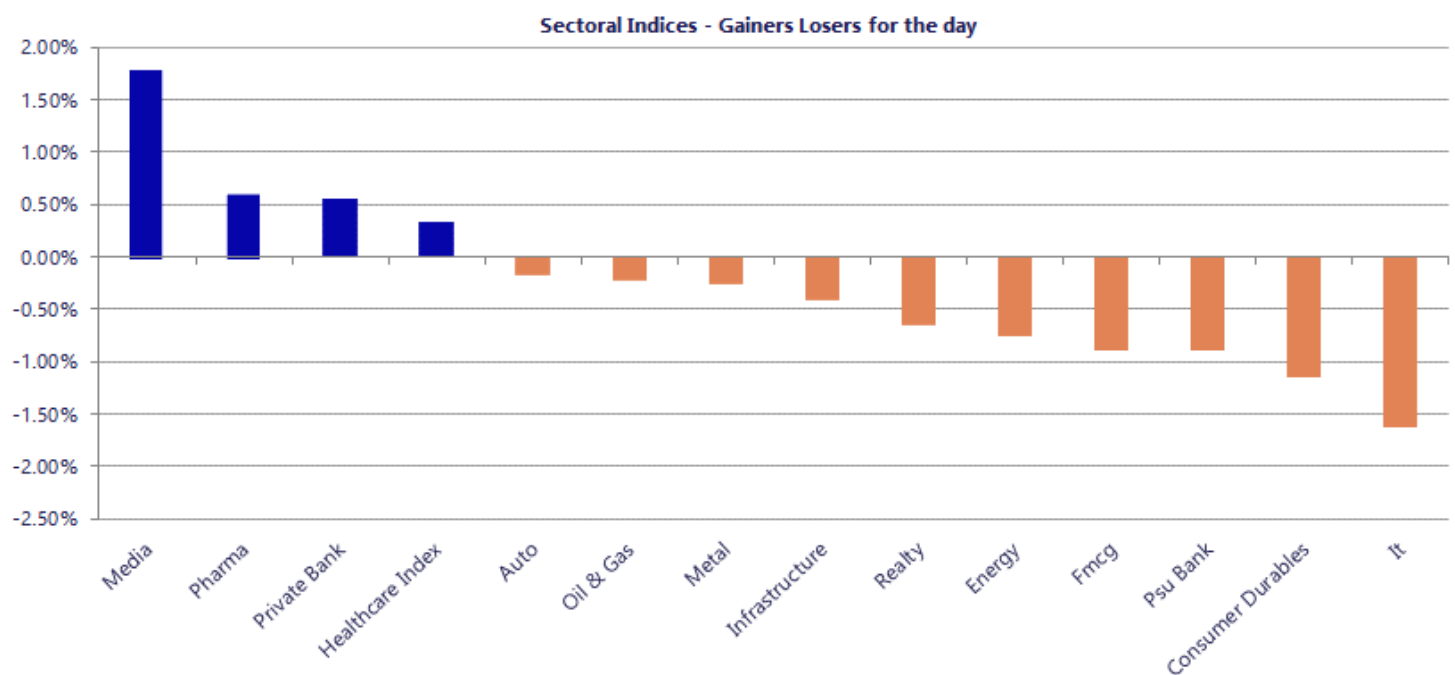


Breakouts - Cross above 200 DMA			
Company Name	LCP	Change %	200 DMA
PPAP Automotive	244.82	11.75	219.07
V L Infraprojec	30.55	2.86	29.7
Swaraj Suiting	249.6	2.75	242.93
Indoco Remedies	243	2.41	237.27
Tainwala Chem	198.94	1.52	195.97
City Union Bank	256.8	1.43	253.17
Banco Products	668.95	1.07	661.9
Coffee Day	34.66	0.99	34.32
Agarwal Toughen	124.8	0.87	123.72
SMC Global Secu	71.12	0.68	70.64
Aspinwall	240.14	0.44	239.08
Greenlam Ind	241.52	0.34	240.69
RPG Life	2199.6	0.31	2192.9

Breakdown - Cross below 200 DMA			
Company Name	LCP	Change %	200 DMA
Jay Jalaram	132	-5.61	139.85
Praj Industries	328.5	-4.29	343.21
Hinduja Global	427.2	-4.25	446.14
Marvel Decor Lt	72.2	-4.17	75.34
Hariom Pipe	379.9	-3.49	393.65
Sahasra Electro	271.95	-3.26	281.11
Deem Roll-Tech	46.9	-3.10	48.4
Purple United	380.25	-3.06	392.24
Deepak Nitrite	1612.4	-3.00	1662.31
Kirloskar Bros	1664.1	-2.93	1714.38
Varvee Global	68.74	-2.88	70.78
Schaeffler Ind	3860.2	-2.86	3973.99
Shriram Propert	81.95	-2.79	84.3
MMP Industries	251.75	-2.63	258.55
Damodar Ind	29.36	-2.59	30.14
MRPL	155.7	-2.47	159.64
Guj Ind Power	155.64	-2.41	159.48
General Insuran	370.4	-2.38	379.43

\* Stocks crossing above its Simple Moving Average (200DMA)

\* Stocks crossing below its Simple Moving Average (200DMA)



## Nifty 50 Stocks - Summary Details

Symbol	LTP	Chng	% Chng	Volume (lacs)	Turnover (crs.)	52w High	Diff with 52w H	52w Low	Diff with 52w L	365 days % chng	30 days % chng
NIFTY 50	23161.60	-53.35	-0.23%	3629.97	28530	26373	12.18%	22183	4.41%	-2.75%	-7.87%
ADANIENT	2913.40	-17.70	-0.60%	12.04	353	3060	4.78%	1753	66.20%	16.53%	16.26%
ADANIPTS	1792.10	-29.10	-1.60%	22.29	401	1858	3.54%	1291	38.87%	1.40%	23.05%
APOLLOHOSP	8521.00	32.50	0.38%	3.15	267	8624	1.19%	6697	27.25%	5.43%	23.00%
ASIANPAINT	2690.00	-25.10	-0.92%	7.72	208	2986	9.90%	2115	27.19%	4.83%	21.79%
AXISBANK	1317.00	2.50	0.19%	81.97	1086	1418	7.14%	1043	26.33%	3.51%	6.95%
BAJAJ-AUTO	10125.00	-19.00	-0.19%	1.91	194	10834	6.54%	7859	28.84%	-4.44%	16.13%
BAJAJFINSV	1648.00	-16.20	-0.97%	5.89	97	2195	24.92%	1597	3.19%	-8.15%	-18.13%
BAJFINANCE	872.00	-12.10	-1.37%	51.91	454	1103	20.91%	788	10.67%	-6.84%	-7.48%
BEL	403.00	-5.35	-1.31%	69.95	282	473	14.88%	361	11.57%	-6.70%	2.57%
BHARTIARTL	1786.80	11.60	0.65%	50.21	897	2175	17.83%	1741	2.66%	1.53%	-3.95%
CIPLA	1385.80	8.80	0.64%	6.54	91	1673	17.17%	1166	18.88%	6.20%	-8.93%
COALINDIA	446.00	-5.00	-1.11%	60.35	270	491	9.21%	369	20.98%	-3.97%	10.92%
DRREDDY	1277.70	6.00	0.47%	10.58	135	1380	7.39%	1148	11.26%	-0.17%	-5.43%
EICHERMOT	7182.00	-37.50	-0.52%	4.25	305	8230	12.73%	5220	37.60%	-0.28%	34.19%
ETERNAL	236.00	-3.80	-1.58%	362.65	856	368	35.95%	213	11.01%	-4.01%	-8.20%
GRASIM	3090.00	18.80	0.61%	6.13	190	3198	3.36%	2503	23.48%	3.55%	13.51%
HCLTECH	1113.90	-18.20	-1.61%	34.35	379	1780	37.42%	1090	2.24%	-6.78%	-35.31%
HDFCBANK	745.30	-1.55	-0.21%	326.32	2437	1021	26.97%	727	2.57%	-2.40%	-23.57%
HDFCLIFE	545.00	-4.55	-0.83%	38.61	211	821	33.60%	543	0.37%	-12.48%	-28.68%
HINDALCO	1025.90	-13.40	-1.29%	66.64	686	1176	12.76%	635	61.56%	0.23%	56.58%
HINDUNILVR	2141.00	-28.50	-1.31%	11.79	253	2750	22.15%	2023	5.86%	-7.20%	-9.91%
ICICIBANK	1313.90	20.60	1.59%	359.19	4729	1500	12.41%	1188	10.63%	3.75%	-8.18%
INDIGO	4496.50	-28.40	-0.63%	6.01	271	6233	27.85%	3895	15.44%	4.58%	-20.15%
INFY	1119.50	-25.80	-2.25%	93.72	1047	1728	35.21%	1089	2.80%	-4.89%	-31.37%
ITC	282.65	-1.00	-0.35%	126.03	356	429	34.05%	275	2.76%	-7.59%	-33.67%
JIOFIN	228.20	-1.97	-0.86%	116.65	266	339	32.60%	223	2.19%	-5.05%	-24.60%
JSWSTEEL	1280.00	10.20	0.80%	19.15	245	1328	3.61%	981	30.43%	1.38%	27.10%
KOTAKBANK	392.60	4.50	1.16%	161.35	637	453	13.37%	346	13.63%	3.03%	-8.50%
LT	3871.70	-45.80	-1.17%	22.25	862	4440	12.80%	3288	17.75%	-1.74%	5.07%
M&M	3006.70	54.20	1.84%	31.78	945	3840	21.70%	2896	3.82%	-7.37%	-2.40%
MARUTI	13134.00	61.00	0.47%	3.09	405	17370	24.39%	12176	7.87%	-2.59%	5.48%
MAXHEALTH	1010.80	0.70	0.07%	18.34	186	1314	23.09%	903	11.94%	-2.62%	-14.85%
NESTLEIND	1420.00	-18.30	-1.27%	15.38	220	1498	5.21%	1085	30.91%	-4.18%	17.39%
NTPC	352.00	0.35	0.10%	150.79	530	414	15.06%	316	11.55%	-10.42%	4.11%
ONGC	252.50	0.60	0.24%	135.16	342	308	17.89%	229	10.45%	-10.14%	2.09%
POWERGRID	287.00	-0.20	-0.07%	120.64	348	325	11.68%	250	14.80%	-7.69%	-2.86%
RELIANCE	1264.50	5.70	0.45%	131.17	1660	1612	21.55%	1253	0.90%	-8.91%	-12.73%
SBILIFE	1740.00	11.30	0.65%	9.65	166	2132	18.39%	1704	2.10%	-7.66%	-3.30%
SBIN	1001.10	-2.15	-0.21%	137.74	1382	1235	18.92%	782	28.07%	2.82%	22.83%
SHRIRAMFIN	889.05	-8.30	-0.92%	46.40	412	1108	19.76%	567	56.94%	-8.90%	29.59%
SUNPHARMA	1799.00	12.60	0.71%	18.58	333	1917	6.14%	1548	16.21%	-3.94%	6.41%
TATACONSUM	1108.30	0.30	0.03%	7.38	82	1283	13.60%	1007	10.04%	-12.80%	0.36%
TATASTEEL	198.40	-0.91	-0.46%	382.92	758	224	11.59%	150	32.44%	-6.45%	26.85%
TCS	2136.70	-17.20	-0.80%	30.80	657	3538	39.61%	2110	1.27%	-10.71%	-38.46%
TECHM	1467.00	-11.90	-0.80%	20.89	305	1854	20.87%	1304	12.49%	0.66%	-10.41%
TITAN	4031.00	-11.10	-0.27%	7.68	310	4605	12.46%	3303	22.04%	-4.15%	13.82%
TMPV	376.30	-4.70	-1.23%	65.09	245	744	49.42%	294	27.86%	8.76%	-48.90%
TRENT	2721.00	-33.70	-1.22%	9.81	266	4174	34.81%	2184	24.61%	-2.38%	-29.34%
ULTRACEMCO	10850.00	-16.00	-0.15%	2.36	256	13110	17.24%	10325	5.08%	-8.56%	-5.36%
WIPRO	177.50	-1.43	-0.80%	144.69	256	273	35.01%	176	0.95%	-9.75%	-31.45%

## Disclaimer / Disclosures

### ANALYST CERTIFICATION

I, Mrs. Vaishali Parekh B.com, Research Analyst, author and the name subscribed to this report, hereby certify that all of the views expressed in this research report accurately reflect our views about the subject issuer(s) or securities. We also certify that no part of our compensation was, is, or will be directly or indirectly related to the specific recommendation(s) or view(s) in this report.

Terms & conditions and other disclosures:

Prabhudas Lilladher Pvt. Ltd, Mumbai, India (hereinafter referred to as "PL") is engaged in the business of Stock Broking, Portfolio Manager, Depository Participant and distribution for third party financial products. PL is a subsidiary of Prabhudas Lilladher Advisory Services Pvt Ltd. which has its various subsidiaries engaged in business of commodity broking, investment banking, financial services (margin funding) and distribution of third party financial/other products, details in respect of which are available at [www.plindia.com](http://www.plindia.com)

This document has been prepared by the Research Division of PL and is meant for use by the recipient only as information and is not for circulation. This document is not to be reported or copied or made available to others without prior permission of PL. It should not be considered or taken as an offer to sell or a solicitation to buy or sell any security.

The information contained in this report has been obtained from sources that are considered to be reliable. However, PL has not independently verified the accuracy or completeness of the same. Neither PL nor any of its affiliates, its directors or its employees accepts any responsibility of whatsoever nature for the information, statements and opinion given, made available or expressed herein or for any omission therein.

Recipients of this report should be aware that past performance is not necessarily a guide to future performance and value of investments can go down as well. The suitability or otherwise of any investments will depend upon the recipient's particular circumstances and, in case of doubt, advice should be sought from an independent expert/advisor.

Either PL or its affiliates or its directors or its employees or its representatives or its clients or their relatives may have position(s), make market, act as principal or engage in transactions of securities of companies referred to in this report and they may have used the research material prior to publication.

PL may from time to time solicit or perform investment banking or other services for any company mentioned in this document.

PL is registered as Research Analyst under Securities and Exchange Board of India (Research Analysts) Regulations, 2014 PL submits that no material disciplinary action has been taken on us by any Regulatory Authority impacting Equity Research Analysis activities.

PL or its research analysts or its associates or his relatives do not have any financial interest in the subject company.

PL or its research analysts or its associates or his relatives do not have actual/beneficial ownership of one per cent or more securities of the subject company at the end of the month immediately preceding the date of publication of the research report.

PL or its research analysts or its associates or his relatives do not have any material conflict of interest at the time of publication of the research report.

PL or its associates might have received compensation from the subject company in the past twelve months.

PL or its associates might have managed or co-managed public offering of securities for the subject company in the past twelve months or mandated by the subject company for any other assignment in the past twelve months.

PL or its associates might have received any compensation for investment banking or merchant banking or brokerage services from the subject company in the past twelve months.

PL or its associates might have received any compensation for products or services other than investment banking or merchant banking or brokerage services from the subject company in the past twelve months PL or its associates might have received any compensation or other benefits from the subject company or third party in connection with the research report.

PL encourages independence in research report preparation and strives to minimize conflict in preparation of research report. PL or its analysts did not receive any compensation or other benefits from the subject Company or third party in connection with the preparation of the research report. PL or its Research Analysts do not have any material conflict of interest at the time of publication of this report.

It is confirmed that Mrs. Vaishali Parekh B.com, Research Analyst of this report has not received any compensation from the companies mentioned in the report in the preceding twelve months compensation of our Research Analysts is not based on any specific merchant banking, investment banking or brokerage service transactions.

The Research analysts for this report certifies that all of the views expressed in this report accurately reflect his or her personal views about the subject company or companies and its or their securities, and no part of his or her compensation was, is or will be, directly or indirectly related to specific recommendations or views expressed in this report.

The research analysts for this report has not served as an officer, director or employee of the subject company PL or its research analysts have not engaged in market making activity for the subject company

Our sales people, traders, and other professionals or affiliates may provide oral or written market commentary or trading strategies to our clients that reflect opinions that are contrary to the opinions expressed herein, and our proprietary trading and investing businesses may make investment decisions that are inconsistent with the recommendations expressed herein. In reviewing these materials, you should be aware that any or all of the foregoing, among other things, may give rise to real or potential conflicts of interest.

PL and its associates, their directors and employees may (a) from time to time, have a long or short position in, and buy or sell the securities of the subject company or (b) be engaged in any other transaction involving such securities and earn brokerage or other compensation or act as a market maker in the financial instruments of the subject company or act as an advisor or lender/borrower to the subject company or may have any other potential conflict of interests with respect to any recommendation and other related information and opinions.

**Regd. Office:** 3<sup>rd</sup> Floor, Sadhana House, 570, P. B. Marg, Behind Mahindra Tower, Worli, Mumbai - 400 018, India.