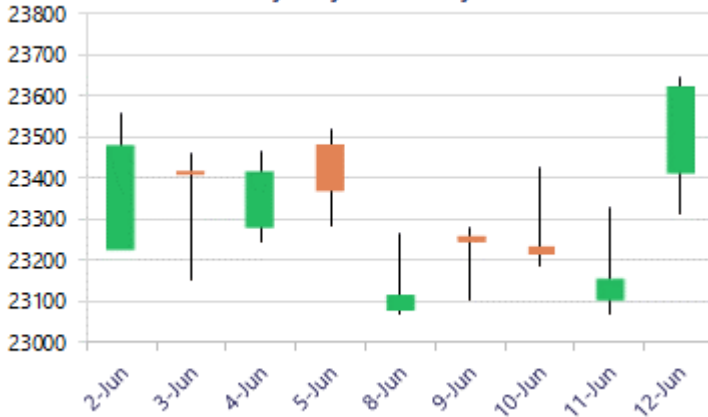


* Sensex 75527.95 + 1695.40

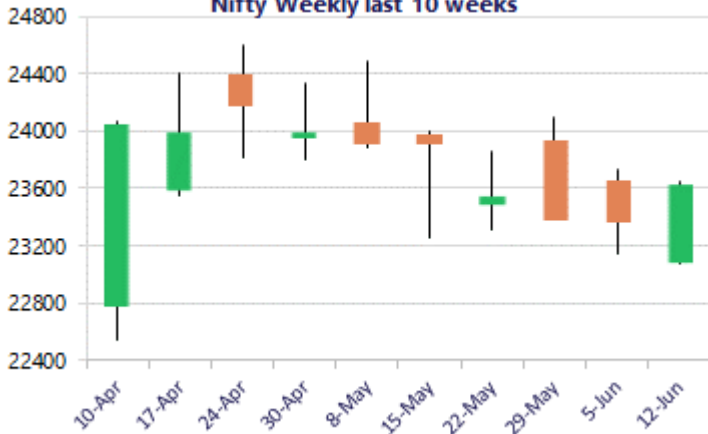
* Nifty 23622.90 + 461.30

* Bank Nifty 56814.80 + 1638.05

Nifty daily last 10 days



Nifty Weekly last 10 weeks



*Blue candle → Close rate > Open rate * Red candle → Close rate < Open rate

Nifty ends above 23600 zone with a robust move

Nifty witnessed a strong session with a robust move to close above the 23600 zone after a long time to maintain an optimistic approach for the coming sessions. BankNifty indicated a strong bullish candle on the daily chart to close on a very positive note to expect for further follow through of the positive move in the coming sessions. The market breadth was strong with the advance decline indicating a ratio of 5:1 at close.

Market Forecast

Nifty daily range 23500 - 23800

Nifty indicated a gap up opening and thereafter, witnessed a robust move during the session to form a strong bullish candle on the daily chart to close above the 23600 zone with the bias and sentiment improving anticipating for further rise in the coming sessions. The index sustaining the important support near the 23000 zone has picked up well and would need a decisive breach above the 50EMA level at 23800 zone, as mentioned earlier to establish conviction and clarity, to expect for further follow through of the positive move.

BankNifty indicated a strong opening above the resistance hurdle of 55600 level and with a bullish candle formation on the daily chart almost to touch the significant 200 period MA at 57000 zone has improved the sentiment expecting for further rise in the coming sessions. The index would have the 55500 zone as the near-term support which needs to be sustained, while the 53000 level shall remain as the important and major support zone. A decisive breach above the previous peak of 57450 zone shall indicate a breakout to trigger for fresh upward move in the coming days.

The support for the day is seen at 23500 levels, while the resistance is seen at 23800 levels. BankNifty would have the daily range of 56000-57500 levels.

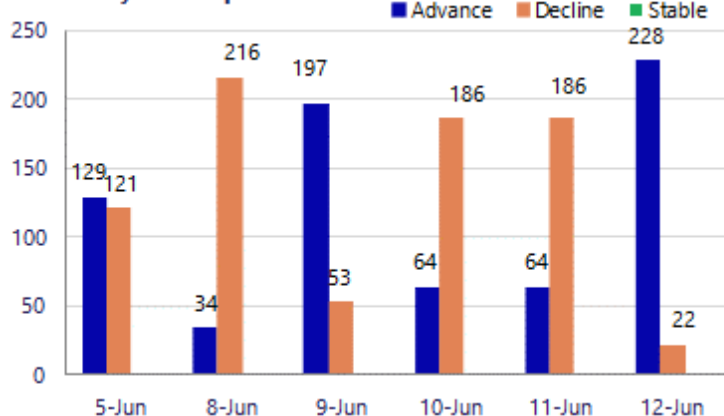
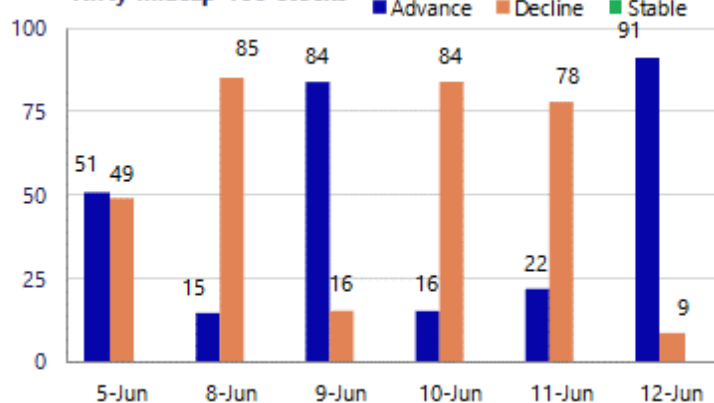
Sensex	Period	Closing	% Chng	Trend	Reversal	2 Sup	1 Sup	Pivot	1 Res	2 Res
Nifty	Daily	23622.90	1.99%	1	23113.25	23196	23409	23527	23741	23859
	Weekly	23622.90	1.10%	1	23593.30	22871	23247	23446	23822	24021
	Monthly	23547.75	-1.87%	-5	25345.55	22545	23046	23764	24266	24984
Bank Nifty	Daily	56814.80	2.97%	4	55351.75	55329	56072	56469	57212	57610
	Weekly	56814.80	4.25%	1	54282.95	52818	54816	55842	57840	58866
	Monthly	54239.20	-1.14%	-3	60590.40	50902	52570	54452	56121	58003
Sensex	Daily	75527.95	2.30%	1	73473.10	74042	74785	75196	75940	76351
	Weekly	75527.95	1.73%	1	74856.70	72529	74029	74818	76318	77107
	Monthly	74775.74	-2.78%	-5	81359.20	71515	73145	75765	77395	80015

Gainers - Losers (Nifty 500 Stocks)
Gainers

Company Name	Last Price	% Gain	Volume
IFCI	84.57	19.99%	240541132
Authum Invest	530.15	15.26%	19070826
Tata Teleservice	46.44	10.18%	55068815
Ashok Leyland	152.45	10.01%	69272916
Netweb	4,587.40	9.45%	4344896
Aegis Vopak	217.85	9.40%	4204329
Tata Motors Com	390.30	8.92%	21118400

Losers

Company Name	Last Price	% Loss	Volume
Cemindia Proj	1,122.40	-4.50%	750195
Nestle	1375.7	-3.29%	2380729
Oil India	417.80	-2.69%	6568325
ONGC	246.20	-2.53%	31112657
Tech Mahindra	1,429.20	-2.45%	2460369
OneSource Spec	1612.5	-2.36%	362871
Premier Energie	1034.6	-2.21%	1125401

Nifty Smallcap-250 stocks

Nifty Midcap-100 stocks


Nifty Daily chart with RSI indicator



BankNifty Daily chart with RSI indicator



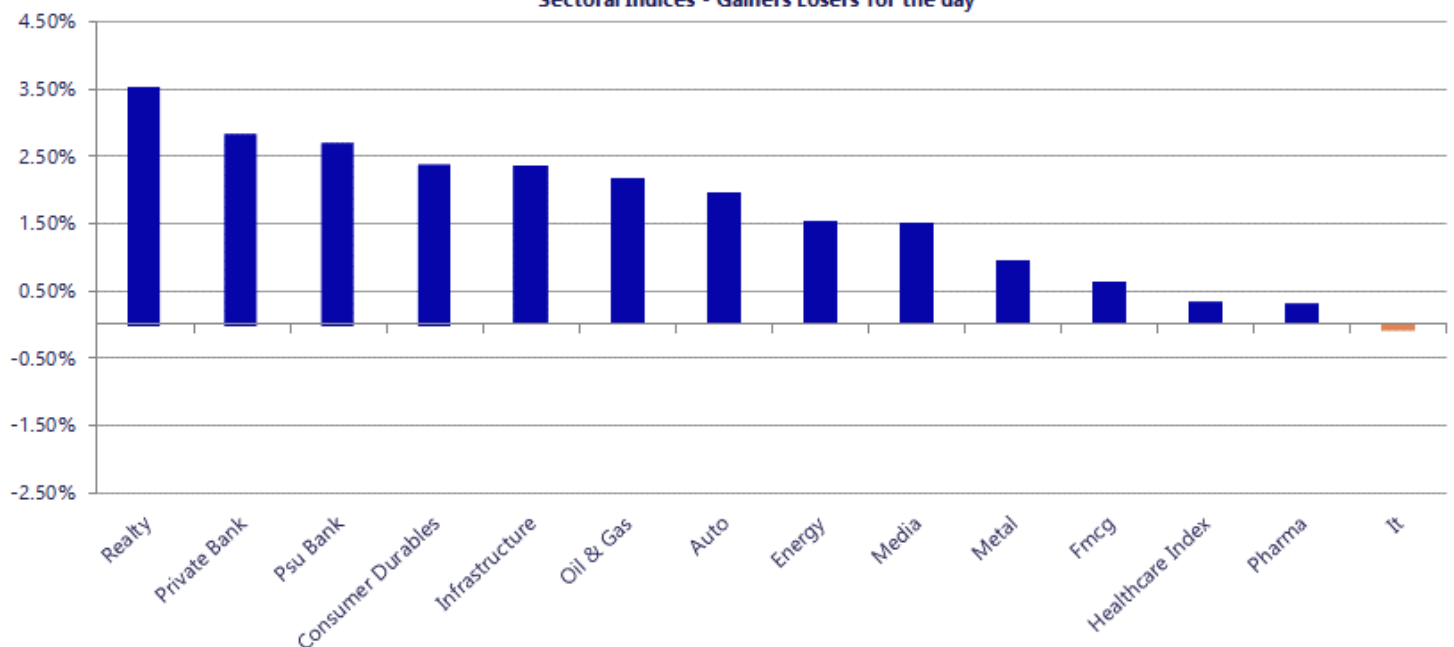
Breakouts - Cross above 200 DMA			
Company Name	LCP	Change %	200 DMA
Beta Drugs	1771.2	16.06	1526.05
Chaman Lal Seti	300.05	12.86	265.85
Manali Petro	65.2	7.40	60.71
MMTC	68.06	7.21	63.48
Avantel	166.53	5.35	158.07
JSW Infra	291	4.36	278.85
Nitco	98.41	4.18	94.46
GNA Axles	371.25	4.17	356.38
Motilal Oswal	888.45	4.10	853.42
Prime Focus	239.27	4.08	229.89
Hariom Pipe	408.2	3.97	392.61
Reliance Chemo	141.29	3.94	135.94
Garden Reach Sh	2648.7	3.81	2551.57
Jamna Auto	121.8	3.76	117.39
Larsen	4049.3	3.73	3903.65
India Glycols	986.65	3.40	954.21
SML Mahindra	3883.8	3.11	3766.67
BF Investment	437.3	3.07	424.29

* Stocks crossing above its Simple Moving Average (200DMA)

Breakdown - Cross below 200 DMA			
Company Name	LCP	Change %	200 DMA
Diensten Tech	130	-7.33	140.29
Salona Cotspin	259.1	-1.66	263.47
GP Eco Solution	428.45	-1.53	435.1
Peria Karamalai	757.95	-1.40	768.75
V L Infracore	29.25	-1.15	29.59
Coffee Day	33.93	-1.02	34.28
Italian Edibles	34.05	-1.02	34.4
GeeCee Ventures	322.05	-0.49	323.64
Power Grid Corp	284.8	-0.36	285.83
Onyx Biotec	39.2	-0.36	39.34
United Polyfab	32.95	-0.33	33.06
Umiya Buildcon	86.43	-0.06	86.48
CPSE ETF	96.82	-0.01	96.83

* Stocks crossing below its Simple Moving Average (200DMA)

Sectoral Indices - Gainers Losers for the day



Nifty 50 Stocks - Summary Details											
Symbol	LTP	Chng	% Chng	Volume (lacs)	Turnover (crs.)	52w High	Diff with 52w H	52w Low	Diff with 52w L	365 days % chng	30 days % chng
NIFTY 50	23622.90	461.30	1.99%	3519.44	29593	26373	10.43%	22183	6.49%	1.04%	-5.08%
ADANIENT	2935.00	27.50	0.95%	23.21	678	3060	4.08%	1753	67.43%	22.03%	18.84%
ADANIPTS	1809.40	29.80	1.67%	23.26	419	1858	2.61%	1291	40.21%	7.18%	25.15%
APOLLOHOSP	8500.00	7.00	0.08%	2.76	235	8624	1.44%	6697	26.93%	5.95%	21.49%
ASIANPAINT	2740.10	49.20	1.83%	10.78	295	2986	8.23%	2115	29.56%	9.36%	23.46%
AXISBANK	1353.00	35.70	2.71%	85.36	1145	1418	4.60%	1043	29.78%	7.37%	11.55%
BAJAJ-AUTO	10074.00	-40.00	-0.40%	3.86	388	10834	7.01%	7859	28.19%	-3.11%	17.59%
BAJAJFINSV	1691.90	46.80	2.84%	14.86	248	2195	22.92%	1597	5.94%	-3.03%	-16.61%
BAJFINANCE	920.00	49.45	5.68%	117.30	1057	1103	16.55%	788	16.77%	1.75%	-1.80%
BEL	407.80	5.50	1.37%	80.86	328	473	13.87%	361	12.90%	-2.09%	5.27%
BHARTIARTL	1825.00	42.40	2.38%	59.11	1072	2175	16.07%	1741	4.85%	3.88%	-1.04%
CIPLA	1386.00	2.70	0.20%	8.06	112	1673	17.15%	1166	18.90%	7.25%	-7.77%
COALINDIA	444.75	-1.45	-0.32%	99.47	441	491	9.47%	369	20.64%	-3.95%	13.25%
DRREDDY	1272.90	-3.10	-0.24%	16.45	210	1380	7.74%	1148	10.84%	0.23%	-6.59%
EICHERMOT	7300.00	120.50	1.68%	3.00	219	8230	11.30%	5220	39.86%	2.44%	37.33%
ETERNAL	244.05	8.85	3.76%	235.02	568	368	33.76%	213	14.79%	1.70%	-2.99%
GRASIM	3102.10	12.60	0.41%	5.37	166	3198	2.98%	2503	23.96%	6.86%	15.36%
HCLTECH	1110.00	-0.20	-0.02%	22.04	244	1780	37.64%	1090	1.88%	-3.12%	-34.75%
HDFCBANK	771.95	27.35	3.67%	360.88	2759	1021	24.36%	727	6.23%	2.86%	-20.56%
HDFCLIFE	557.15	11.90	2.18%	29.67	164	821	32.12%	543	2.61%	-7.42%	-26.16%
HINDALCO	1021.80	-2.50	-0.24%	93.89	962	1176	13.11%	635	60.91%	-1.88%	56.95%
HINDUNILVR	2162.70	22.90	1.07%	11.56	250	2750	21.36%	2023	6.93%	-4.39%	-7.29%
ICICIBANK	1340.00	23.00	1.75%	183.40	2445	1500	10.67%	1188	12.83%	8.04%	-5.98%
INDIGO	4705.00	202.60	4.50%	25.30	1183	6233	24.51%	3895	20.79%	11.98%	-14.09%
INFY	1118.50	3.90	0.35%	80.75	902	1728	35.27%	1089	2.71%	-1.91%	-30.47%
ITC	285.70	3.30	1.17%	128.93	367	428	33.26%	275	3.87%	-4.99%	-32.14%
JIOFIN	236.33	8.31	3.64%	127.45	297	339	30.20%	223	5.84%	2.54%	-20.16%
JSWSTEEL	1299.00	16.70	1.30%	10.92	141	1328	2.18%	981	32.37%	3.73%	30.47%
KOTAKBANK	404.00	10.65	2.71%	172.27	689	453	10.86%	346	16.93%	7.45%	-5.02%
LT	4050.00	188.00	4.87%	30.66	1224	4440	8.78%	3288	23.17%	5.02%	12.38%
M&M	3039.90	39.00	1.30%	35.57	1074	3840	20.83%	2896	4.97%	-4.29%	0.69%
MARUTI	13350.00	252.00	1.92%	5.59	744	17370	23.14%	12176	9.64%	1.35%	7.75%
MAXHEALTH	1014.50	4.90	0.49%	7.60	77	1314	22.81%	903	12.35%	-0.31%	-15.61%
NESTLEIND	1376.50	-46.00	-3.23%	23.81	332	1498	8.12%	1085	26.90%	-6.27%	15.40%
NTPC	354.40	2.55	0.72%	87.40	308	414	14.48%	316	12.31%	-9.75%	6.20%
ONGC	246.95	-5.65	-2.24%	311.13	765	308	19.69%	229	8.02%	-16.15%	-0.38%
POWERGRID	284.95	-1.70	-0.59%	54.78	156	325	12.31%	250	13.98%	-6.97%	-1.40%
RELIANCE	1296.40	33.40	2.64%	119.89	1531	1612	19.57%	1253	3.45%	-4.96%	-10.07%
SBILIFE	1705.20	-13.90	-0.81%	14.38	246	2132	20.02%	1700	0.28%	-7.02%	-3.44%
SBIN	1016.40	15.70	1.57%	110.81	1122	1235	17.68%	782	30.02%	4.29%	26.11%
SHRIRAMFIN	958.00	71.75	8.10%	97.60	909	1108	13.54%	567	69.11%	2.96%	43.40%
SUNPHARMA	1807.00	12.80	0.71%	12.43	225	1917	5.72%	1548	16.73%	-2.10%	7.09%
TATACONSUM	1100.70	-7.90	-0.71%	14.55	160	1283	14.19%	1007	9.28%	-12.15%	1.44%
TATASTEEL	197.83	3.87	2.00%	276.23	545	224	11.84%	150	32.06%	-6.68%	29.39%
TCS	2161.10	25.50	1.19%	21.25	457	3538	38.92%	2110	2.42%	-6.05%	-37.07%
TECHM	1433.10	-32.00	-2.18%	24.60	353	1854	22.70%	1304	9.89%	2.89%	-12.85%
TITAN	4179.00	153.80	3.82%	11.22	463	4605	9.25%	3303	26.52%	3.05%	21.04%
TMPV	391.00	15.10	4.02%	77.88	300	744	47.45%	294	32.86%	16.08%	-45.34%
TRENT	2756.00	49.10	1.81%	5.83	160	4174	33.97%	2184	26.21%	2.06%	-26.54%
ULTRACEMCO	11110.00	280.00	2.59%	1.93	212	13110	15.26%	10325	7.60%	-3.53%	-1.88%
WIPRO	180.23	2.86	1.61%	138.50	248	273	34.01%	176	2.50%	-4.93%	-30.58%

Disclaimer / Disclosures

ANALYST CERTIFICATION

I, Mrs. Vaishali Parekh B.com, Research Analyst, author and the name subscribed to this report, hereby certify that all of the views expressed in this research report accurately reflect our views about the subject issuer(s) or securities. We also certify that no part of our compensation was, is, or will be directly or indirectly related to the specific recommendation(s) or view(s) in this report.

Terms & conditions and other disclosures:

Prabhudas Lilladher Pvt. Ltd, Mumbai, India (hereinafter referred to as "PL") is engaged in the business of Stock Broking, Portfolio Manager, Depository Participant and distribution for third party financial products. PL is a subsidiary of Prabhudas Lilladher Advisory Services Pvt Ltd. which has its various subsidiaries engaged in business of commodity broking, investment banking, financial services (margin funding) and distribution of third party financial/other products, details in respect of which are available at www.plindia.com

This document has been prepared by the Research Division of PL and is meant for use by the recipient only as information and is not for circulation. This document is not to be reported or copied or made available to others without prior permission of PL. It should not be considered or taken as an offer to sell or a solicitation to buy or sell any security.

The information contained in this report has been obtained from sources that are considered to be reliable. However, PL has not independently verified the accuracy or completeness of the same. Neither PL nor any of its affiliates, its directors or its employees accepts any responsibility of whatsoever nature for the information, statements and opinion given, made available or expressed herein or for any omission therein.

Recipients of this report should be aware that past performance is not necessarily a guide to future performance and value of investments can go down as well. The suitability or otherwise of any investments will depend upon the recipient's particular circumstances and, in case of doubt, advice should be sought from an independent expert/advisor.

Either PL or its affiliates or its directors or its employees or its representatives or its clients or their relatives may have position(s), make market, act as principal or engage in transactions of securities of companies referred to in this report and they may have used the research material prior to publication.

PL may from time to time solicit or perform investment banking or other services for any company mentioned in this document.

PL is registered as Research Analyst under Securities and Exchange Board of India (Research Analysts) Regulations, 2014 PL submits that no material disciplinary action has been taken on us by any Regulatory Authority impacting Equity Research Analysis activities.

PL or its research analysts or its associates or his relatives do not have any financial interest in the subject company.

PL or its research analysts or its associates or his relatives do not have actual/beneficial ownership of one per cent or more securities of the subject company at the end of the month immediately preceding the date of publication of the research report.

PL or its research analysts or its associates or his relatives do not have any material conflict of interest at the time of publication of the research report.

PL or its associates might have received compensation from the subject company in the past twelve months.

PL or its associates might have managed or co-managed public offering of securities for the subject company in the past twelve months or mandated by the subject company for any other assignment in the past twelve months.

PL or its associates might have received any compensation for investment banking or merchant banking or brokerage services from the subject company in the past twelve months.

PL or its associates might have received any compensation for products or services other than investment banking or merchant banking or brokerage services from the subject company in the past twelve months PL or its associates might have received any compensation or other benefits from the subject company or third party in connection with the research report.

PL encourages independence in research report preparation and strives to minimize conflict in preparation of research report. PL or its analysts did not receive any compensation or other benefits from the subject Company or third party in connection with the preparation of the research report. PL or its Research Analysts do not have any material conflict of interest at the time of publication of this report.

It is confirmed that Mrs. Vaishali Parekh B.com, Research Analyst of this report has not received any compensation from the companies mentioned in the report in the preceding twelve months compensation of our Research Analysts is not based on any specific merchant banking, investment banking or brokerage service transactions.

The Research analysts for this report certifies that all of the views expressed in this report accurately reflect his or her personal views about the subject company or companies and its or their securities, and no part of his or her compensation was, is or will be, directly or indirectly related to specific recommendations or views expressed in this report.

The research analysts for this report has not served as an officer, director or employee of the subject company PL or its research analysts have not engaged in market making activity for the subject company

Our sales people, traders, and other professionals or affiliates may provide oral or written market commentary or trading strategies to our clients that reflect opinions that are contrary to the opinions expressed herein, and our proprietary trading and investing businesses may make investment decisions that are inconsistent with the recommendations expressed herein. In reviewing these materials, you should be aware that any or all of the foregoing, among other things, may give rise to real or potential conflicts of interest.

PL and its associates, their directors and employees may (a) from time to time, have a long or short position in, and buy or sell the securities of the subject company or (b) be engaged in any other transaction involving such securities and earn brokerage or other compensation or act as a market maker in the financial instruments of the subject company or act as an advisor or lender/borrower to the subject company or may have any other potential conflict of interests with respect to any recommendation and other related information and opinions.

Regd. Office: 3rd Floor, Sadhana House, 570, P. B. Marg, Behind Mahindra Tower, Worli, Mumbai - 400 018, India.