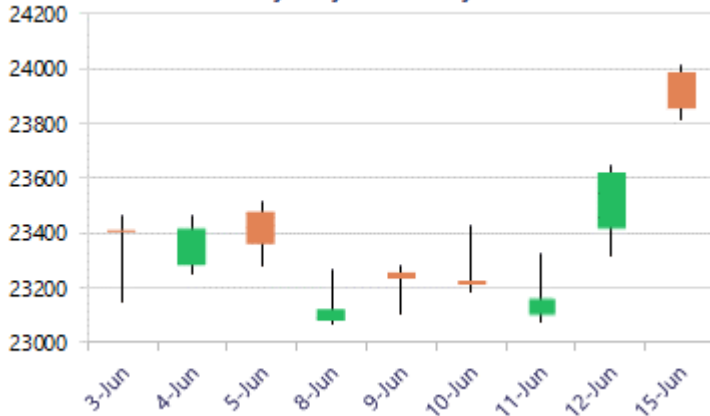


\* Sensex 76264.33 + 736.38

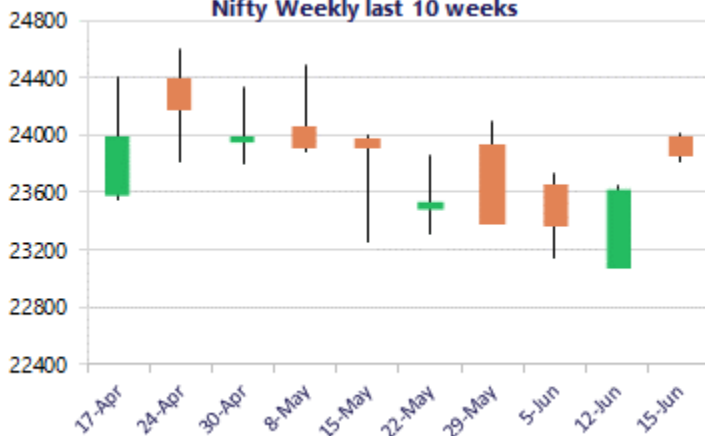
\* Nifty 23853.90 + 231.00

\* Bank Nifty 57198.80 + 384.00

**Nifty daily last 10 days**



**Nifty Weekly last 10 weeks**



\*Blue candle → Close rate > Open rate \* Red candle → Close rate < Open rate

### Nifty touches 24000 zone

Nifty witnessed another gap up opening to scale 24000 level in the morning session with sentiment getting better and closed near the 23850 zone with overall bias improving. BankNifty opened on a strong note near the 57800 zone but fizzled out with profit booking seen and ended the session near 57200 level with further upside move anticipated in the coming sessions. The market breadth was strong with the advance decline indicating a ratio of 3:1 at close.

### Market Forecast

#### Nifty daily range 23700 - 24100

Nifty witnessed another session of huge gap up opening near the 24000 zone with overall bias improving and sentiment easing out significantly with the broader markets participating actively to support the index. The index would need to sustain the important near-term support of the 50EMA level at 23750 zone and the major support at 23500 level to maintain the bias intact. On the upside, the index would need to decisively breach above the resistance hurdle of 24300 zone which shall further bring conviction and clarity.

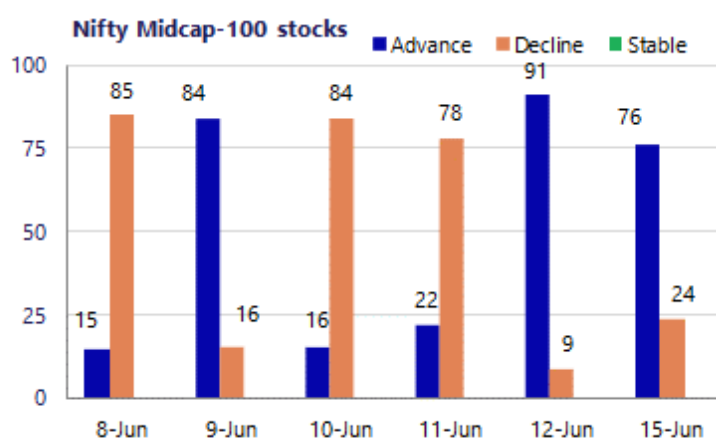
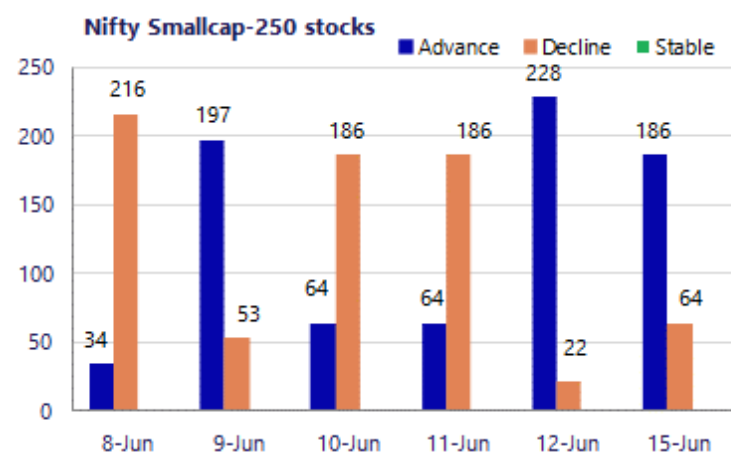
BankNifty gave a strong opening near the 57800 level above the important 200 period MA at 57000 level to further improve the bias and thereafter, with some profit booking witnessed, ended the session near 57200 zone. With the trend improving, the index would need to sustain above the 56400 zone to maintain the bias intact and on the upside, would need to breach above the 58000 zone decisively to further establish clarity and conviction.

The support for the day is seen at 23700 levels, while the resistance is seen at 24100 levels. BankNifty would have the daily range of 56500-58000 levels.

Sensex	Period	Closing	% Chng	Trend	Reversal	2 Sup	1 Sup	Pivot	1 Res	2 Res
Nifty	Daily	23853.90	0.98%	2	23207.75	23701	23777	23894	23971	24088
	Weekly	23622.90	1.10%	1	23593.30	22871	23247	23446	23822	24021
	Monthly	23547.75	-1.87%	-5	25345.55	22545	23046	23764	24266	24984
Bank Nifty	Daily	57198.80	0.68%	5	55923.70	56689	56944	57374	57629	58059
	Weekly	56814.80	4.25%	1	54282.95	52818	54816	55842	57840	58866
	Monthly	54239.20	-1.14%	-3	60590.40	50902	52570	54452	56121	58003
Sensex	Daily	76264.33	0.97%	2	73927.75	75728	75996	76409	76677	77089
	Weekly	75527.95	1.73%	1	74856.70	72529	74029	74818	76318	77107
	Monthly	74775.74	-2.78%	-5	81359.20	71515	73145	75765	77395	80015

**Gainers - Losers ( Nifty 500 Stocks )**

Gainers				Losers			
Company Name	Last Price	% Gain	Volume	Company Name	Last Price	% Loss	Volume
Aarti Ind	498.15	13.06%	448	Aurobindo Pharm	1,408.30	-4.38%	1462.5
Balkrishna Ind	2,192.50	8.91%	2060.7	Aster DM Health	786.7	-3.47%	825
Chennai Petro	1210.6	6.41%	1158	Deepak Fert	1,508.30	-2.98%	1585
Aegis Vopak	231.69	6.35%	225.13	GE Vernova TD	4,805.50	-2.77%	4999.5
Chola Invest.	1,653.60	5.45%	1610	Data Patterns	4,425.50	-2.64%	4591.1
Authum Invest	558.70	5.39%	531	Allied Blenders	627.85	-2.58%	648.95
Apar Ind	15,986.00	5.03%	15600	Ajanta Pharma	3054.4	-2.45%	3176



### Nifty Daily chart with RSI indicator



### BankNifty Daily chart with RSI indicator



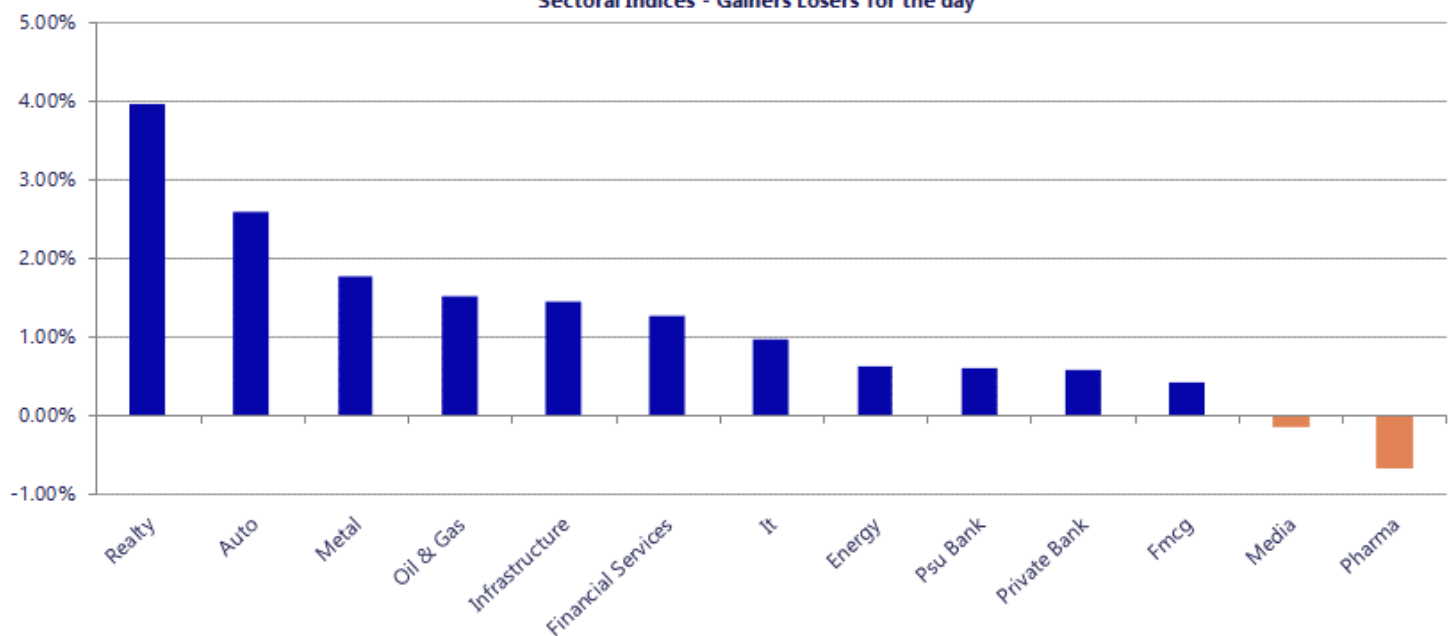
Breakouts - Cross above 200 DMA			
Company Name	LCP	Change %	200 DMA
Gabriel India	1146.3	7.81	1063.26
Remus Pharmaceu	773.75	7.26	721.41
Oriental Hotels	118.94	7.01	111.15
Varvee Global	75.03	6.30	70.58
PPL	257.76	6.28	242.52
L&T Finance	293.25	6.02	276.59
Prakash Ind	151.14	5.81	142.84
Shree Pushkar	385.65	5.63	365.1
Maithan Alloys	1062.9	4.15	1020.54
Sical Logistics	87.66	3.80	84.45
Suyog Tele	733.1	3.78	706.38
Euro India Fres	244.76	3.31	236.92
Rachana Infra	36.3	3.15	35.19
STC India	124.36	2.95	120.8
Godrej Ind	1072.6	2.87	1042.7
Bansal Wire Ind	313.45	2.70	305.22
Petronet LNG	285.9	2.62	278.61
Kronox Lab Scie	142.12	2.55	138.58

\* Stocks crossing above its Simple Moving Average (200DMA)

Breakdown - Cross below 200 DMA			
Company Name	LCP	Change %	200 DMA
Frog Innovation	169.2	-4.55	177.27
S J Logistics	339	-2.23	346.73
Garware Technic	679.5	-1.29	688.38
BF Utilities	613.75	-1.24	621.44
Siddhika	201.8	-1.21	204.27
Entero Health	1122.4	-0.85	1131.97
Sacheerome	311.3	-0.64	313.31
Cartrade	2325	-0.34	2332.95
NR Agarwal	445.7	-0.20	446.59
Sukhjit Starch	170.2	-0.12	170.41
Poddar Pigments	256.65	-0.09	256.89
Biofil Chem	35.87	-0.06	35.89

\* Stocks crossing below its Simple Moving Average (200DMA)

Sectoral Indices - Gainers Losers for the day



Nifty 50 Stocks - Summary Details											
Symbol	LTP	Chng	% Chng	Volume (lacs)	Turnover (crs.)	52w High	Diff with 52w H	52w Low	Diff with 52w L	365 days % chng	30 days % chng
NIFTY 50	23853.90	231.00	0.98%	3988.91	34782	26373	9.55%	22183	7.53%	0.89%	-3.50%
ADANIENT	2938.00	16.40	0.56%	11.74	347	3060	3.98%	1753	67.60%	8.17%	20.66%
ADANIPTS	1809.00	-3.90	-0.22%	14.22	259	1858	2.63%	1291	40.18%	0.77%	28.75%
APOLLOHOSP	8490.00	-8.00	-0.09%	3.58	303	8624	1.55%	6697	26.78%	5.04%	21.38%
ASIANPAINT	2730.00	-17.40	-0.63%	27.52	766	2986	8.56%	2115	29.08%	4.77%	23.30%
AXISBANK	1365.10	8.80	0.65%	75.23	1029	1418	3.75%	1043	30.94%	9.66%	13.21%
BAJAJ-AUTO	9936.00	-127.00	-1.26%	4.00	400	10834	8.29%	7859	26.44%	-4.25%	17.40%
BAJAJFINSV	1749.80	60.70	3.59%	20.03	351	2195	20.28%	1597	9.57%	1.26%	-12.99%
BAJFINANCE	940.95	22.65	2.47%	119.89	1137	1103	14.65%	788	19.43%	3.35%	0.84%
BEL	409.65	3.15	0.77%	114.99	470	473	13.48%	361	13.41%	-3.30%	3.92%
BHARTIARTL	1843.00	20.50	1.12%	53.07	975	2175	15.24%	1741	5.89%	-3.27%	0.14%
CIPLA	1382.10	-7.30	-0.53%	16.88	233	1673	17.39%	1166	18.56%	-3.49%	-8.18%
COALINDIA	447.50	4.00	0.90%	100.57	446	491	8.91%	369	21.39%	-3.18%	14.39%
DRREDDY	1279.00	3.60	0.28%	11.79	151	1380	7.30%	1148	11.37%	-4.32%	-6.13%
EICHERMOT	7639.00	327.00	4.47%	7.84	592	8230	7.18%	5220	46.36%	8.90%	43.62%
ETERNAL	251.35	7.55	3.10%	399.92	1015	368	31.78%	213	18.23%	4.22%	0.91%
GRASIM	3170.00	64.50	2.08%	10.34	326	3198	0.86%	2503	26.67%	8.05%	19.00%
HCLTECH	1122.30	12.70	1.14%	23.61	264	1780	36.95%	1090	3.01%	-0.91%	-33.80%
HDFCBANK	777.45	5.00	0.65%	399.90	3134	1021	23.82%	727	6.99%	1.30%	-18.91%
HDFCLIFE	581.55	26.20	4.72%	23.82	137	821	29.14%	543	7.10%	-4.46%	-22.75%
HINDALCO	1013.40	-8.20	-0.80%	84.74	865	1176	13.83%	635	59.59%	-5.07%	57.90%
HINDUNILVR	2155.90	-12.90	-0.59%	14.39	312	2750	21.60%	2023	6.60%	-5.12%	-7.03%
ICICIBANK	1328.00	-12.80	-0.95%	161.73	2167	1500	11.47%	1188	11.82%	6.71%	-6.22%
INDIGO	4888.90	179.20	3.80%	23.65	1159	6233	21.56%	3895	25.51%	13.30%	-7.09%
INFY	1135.60	19.20	1.72%	78.56	892	1728	34.28%	1089	4.28%	1.48%	-29.11%
ITC	288.15	3.05	1.07%	111.94	322	427	32.55%	275	4.76%	-6.88%	-30.38%
JIOFIN	239.40	3.51	1.49%	181.98	440	339	29.30%	223	7.21%	2.72%	-18.59%
JSWSTEEL	1297.30	-0.30	-0.02%	11.69	153	1328	2.31%	981	32.20%	1.45%	31.41%
KOTAKBANK	404.85	1.55	0.38%	142.70	579	453	10.67%	346	17.18%	4.60%	-3.95%
LT	4171.00	121.70	3.01%	39.78	1663	4440	6.06%	3288	26.85%	6.70%	16.27%
M&M	3136.00	93.10	3.06%	52.87	1657	3840	18.33%	2896	8.29%	0.41%	4.32%
MARUTI	13806.00	440.00	3.29%	6.13	849	17370	20.52%	12176	13.39%	4.42%	11.27%
MAXHEALTH	1030.00	17.55	1.73%	13.12	135	1314	21.63%	903	14.06%	-1.91%	-16.45%
NESTLEIND	1375.40	-0.30	-0.02%	18.86	261	1498	8.19%	1085	26.80%	-3.85%	15.74%
NTPC	348.30	-5.60	-1.58%	171.90	602	414	15.95%	316	10.38%	-11.88%	4.93%
ONGC	243.45	-2.75	-1.12%	252.08	616	308	20.83%	229	6.49%	-18.67%	-3.20%
POWERGRID	285.60	0.80	0.28%	93.19	267	325	12.11%	250	14.24%	-6.62%	0.04%
RELIANCE	1306.50	13.50	1.04%	186.33	2443	1612	18.94%	1253	4.25%	-2.24%	-8.50%
SBILIFE	1765.00	59.00	3.46%	12.58	220	2132	17.21%	1700	3.80%	-5.34%	0.56%
SBIN	1021.00	3.85	0.38%	124.63	1278	1235	17.31%	782	30.61%	6.00%	28.86%
SHRIRAMFIN	998.95	44.00	4.61%	122.51	1228	1108	9.84%	567	76.34%	6.51%	49.73%
SUNPHARMA	1804.10	-3.60	-0.20%	21.89	395	1917	5.87%	1548	16.54%	-3.95%	6.89%
TATACONSUM	1099.20	-1.50	-0.14%	12.65	140	1283	14.31%	1007	9.13%	-10.92%	1.93%
TATASTEEL	197.50	-0.36	-0.18%	270.71	538	224	11.99%	150	31.84%	-8.92%	29.82%
TCS	2162.60	1.20	0.06%	33.37	724	3538	38.88%	2110	2.49%	-4.48%	-37.24%
TECHM	1426.90	-2.30	-0.16%	19.26	276	1854	23.04%	1304	9.42%	4.12%	-13.99%
TITAN	4285.00	101.00	2.41%	10.77	460	4605	6.95%	3303	29.73%	2.78%	25.22%
TMPV	396.50	6.50	1.67%	110.95	445	740	46.40%	294	34.73%	11.20%	-44.32%
TRENT	2901.70	146.40	5.31%	22.30	646	4174	30.48%	2184	32.88%	6.13%	-22.14%
ULTRACEMCO	11468.00	351.00	3.16%	4.04	464	13110	12.52%	10325	11.07%	-0.17%	2.17%
WIPRO	181.12	0.98	0.54%	138.67	252	273	33.68%	176	3.01%	-4.67%	-30.39%

## Disclaimer / Disclosures

### ANALYST CERTIFICATION

I, Mrs. Vaishali Parekh B.com, Research Analyst, author and the name subscribed to this report, hereby certify that all of the views expressed in this research report accurately reflect our views about the subject issuer(s) or securities. We also certify that no part of our compensation was, is, or will be directly or indirectly related to the specific recommendation(s) or view(s) in this report.

Terms & conditions and other disclosures:

Prabhudas Lilladher Pvt. Ltd, Mumbai, India (hereinafter referred to as "PL") is engaged in the business of Stock Broking, Portfolio Manager, Depository Participant and distribution for third party financial products. PL is a subsidiary of Prabhudas Lilladher Advisory Services Pvt Ltd. which has its various subsidiaries engaged in business of commodity broking, investment banking, financial services (margin funding) and distribution of third party financial/other products, details in respect of which are available at [www.plindia.com](http://www.plindia.com)

This document has been prepared by the Research Division of PL and is meant for use by the recipient only as information and is not for circulation. This document is not to be reported or copied or made available to others without prior permission of PL. It should not be considered or taken as an offer to sell or a solicitation to buy or sell any security.

The information contained in this report has been obtained from sources that are considered to be reliable. However, PL has not independently verified the accuracy or completeness of the same. Neither PL nor any of its affiliates, its directors or its employees accepts any responsibility of whatsoever nature for the information, statements and opinion given, made available or expressed herein or for any omission therein.

Recipients of this report should be aware that past performance is not necessarily a guide to future performance and value of investments can go down as well. The suitability or otherwise of any investments will depend upon the recipient's particular circumstances and, in case of doubt, advice should be sought from an independent expert/advisor.

Either PL or its affiliates or its directors or its employees or its representatives or its clients or their relatives may have position(s), make market, act as principal or engage in transactions of securities of companies referred to in this report and they may have used the research material prior to publication.

PL may from time to time solicit or perform investment banking or other services for any company mentioned in this document.

PL is registered as Research Analyst under Securities and Exchange Board of India (Research Analysts) Regulations, 2014 PL submits that no material disciplinary action has been taken on us by any Regulatory Authority impacting Equity Research Analysis activities.

PL or its research analysts or its associates or his relatives do not have any financial interest in the subject company.

PL or its research analysts or its associates or his relatives do not have actual/beneficial ownership of one per cent or more securities of the subject company at the end of the month immediately preceding the date of publication of the research report.

PL or its research analysts or its associates or his relatives do not have any material conflict of interest at the time of publication of the research report.

PL or its associates might have received compensation from the subject company in the past twelve months.

PL or its associates might have managed or co-managed public offering of securities for the subject company in the past twelve months or mandated by the subject company for any other assignment in the past twelve months.

PL or its associates might have received any compensation for investment banking or merchant banking or brokerage services from the subject company in the past twelve months.

PL or its associates might have received any compensation for products or services other than investment banking or merchant banking or brokerage services from the subject company in the past twelve months PL or its associates might have received any compensation or other benefits from the subject company or third party in connection with the research report.

PL encourages independence in research report preparation and strives to minimize conflict in preparation of research report. PL or its analysts did not receive any compensation or other benefits from the subject Company or third party in connection with the preparation of the research report. PL or its Research Analysts do not have any material conflict of interest at the time of publication of this report.

It is confirmed that Mrs. Vaishali Parekh B.com, Research Analyst of this report has not received any compensation from the companies mentioned in the report in the preceding twelve months compensation of our Research Analysts is not based on any specific merchant banking, investment banking or brokerage service transactions.

The Research analysts for this report certifies that all of the views expressed in this report accurately reflect his or her personal views about the subject company or companies and its or their securities, and no part of his or her compensation was, is or will be, directly or indirectly related to specific recommendations or views expressed in this report.

The research analysts for this report has not served as an officer, director or employee of the subject company PL or its research analysts have not engaged in market making activity for the subject company

Our sales people, traders, and other professionals or affiliates may provide oral or written market commentary or trading strategies to our clients that reflect opinions that are contrary to the opinions expressed herein, and our proprietary trading and investing businesses may make investment decisions that are inconsistent with the recommendations expressed herein. In reviewing these materials, you should be aware that any or all of the foregoing, among other things, may give rise to real or potential conflicts of interest.

PL and its associates, their directors and employees may (a) from time to time, have a long or short position in, and buy or sell the securities of the subject company or (b) be engaged in any other transaction involving such securities and earn brokerage or other compensation or act as a market maker in the financial instruments of the subject company or act as an advisor or lender/borrower to the subject company or may have any other potential conflict of interests with respect to any recommendation and other related information and opinions.

**Regd. Office:** 3<sup>rd</sup> Floor, Sadhana House, 570, P. B. Marg, Behind Mahindra Tower, Worli, Mumbai - 400 018, India.