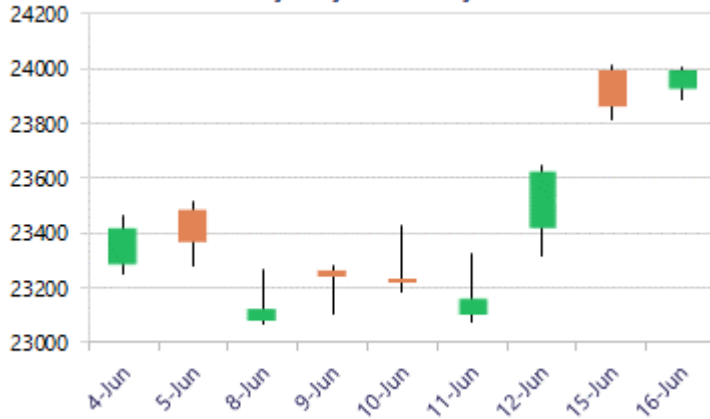


* Sensex 76808.48 + 544.15

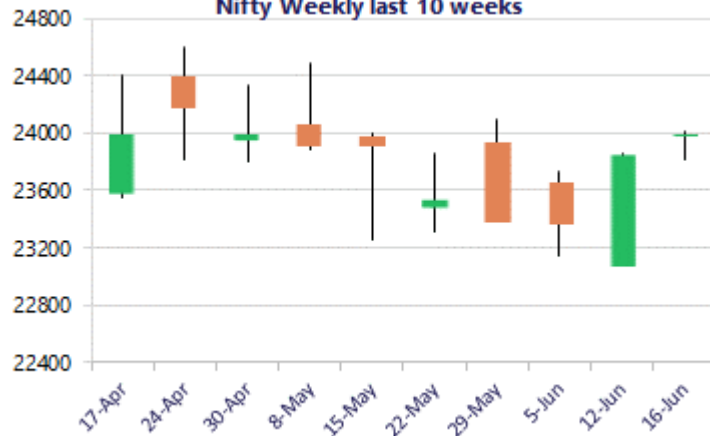
* Nifty 23989.15 + 135.25

* Bank Nifty 57297.15 + 98.35

Nifty daily last 10 days



Nifty Weekly last 10 weeks



*Blue candle → Close rate > Open rate * Red candle → Close rate < Open rate

Nifty sustains near the 24000 zone

Nifty witnessed a gradual rise during the session to sustain near the 24000 zone with bias maintained positive expecting to carry on with the positive move further ahead. BankNifty witnessed consolidation and maintained above the 200 period MA at 57000 with bias and sentiment maintained with a positive approach. The market breadth was slightly on the positive side with the advance decline indicating a ratio of 4:3 at close.

Market Forecast

Nifty daily range 23800 - 24300

Nifty once again opened on a positive note and sustained near the 24000 zone with bias and sentiment better placed anticipating for further rise in the coming days having the important resistance hurdle at 24350 -24400 zone which needs to be breached decisively to establish conviction and further clarity.

The index would need to sustain the important near-term support of the 50EMA level at 23750 zone, as mentioned earlier, and further downside would have the major support positioned near the 23000 zone.

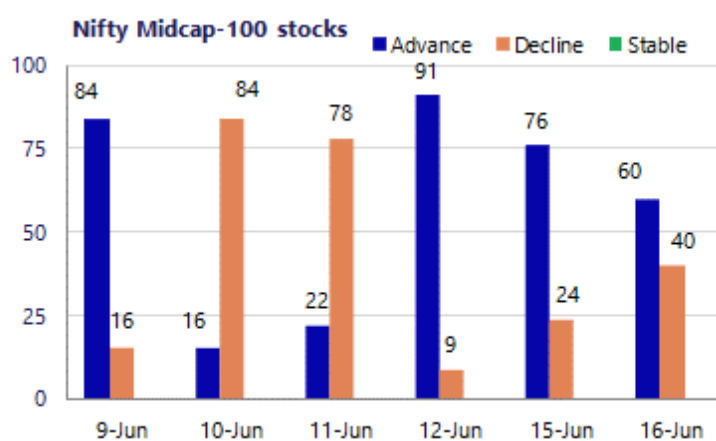
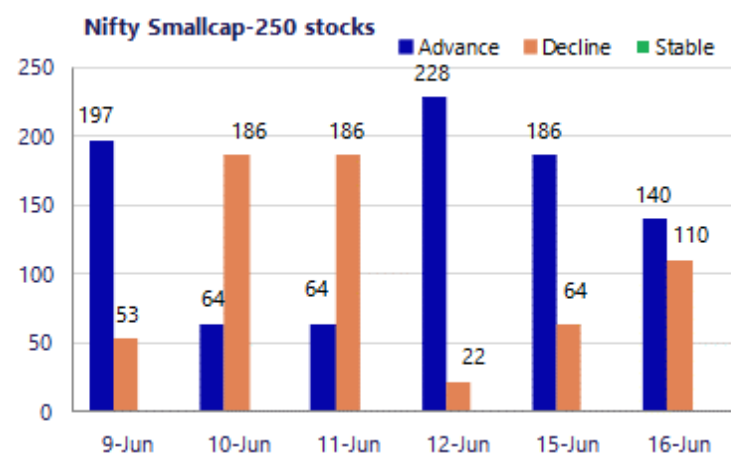
BankNifty overall witnessed a narrow rangebound session hovering near the 57200-zone sustaining above the important 200 period MA at 57000 level and with bias maintained positive can anticipate for further rise in the coming sessions. With the trend improving, the index would need to sustain above the 100 period MA at 56500 zone to maintain the bias intact whereas on the upside, would need to breach above the 58000 zone decisively to fill up the gap to establish conviction and further clarity.

The support for the day is seen at 23800 levels, while the resistance is seen at 24300 levels. BankNifty would have the daily range of 56600-58000 levels.

Sensex	Period	Closing	% Chng	Trend	Reversal	2 Sup	1 Sup	Pivot	1 Res	2 Res
Nifty	Daily	23989.15	0.57%	3	23383.55	23846	23917	23960	24032	24074
	Weekly	23622.90	1.10%	1	23593.30	22871	23247	23446	23822	24021
	Monthly	23547.75	-1.87%	-5	25345.55	22545	23046	23764	24266	24984
Bank Nifty	Daily	57297.15	0.17%	6	56361.00	56934	57116	57258	57439	57581
	Weekly	56814.80	4.25%	1	54282.95	52818	54816	55842	57840	58866
	Monthly	54239.20	-1.14%	-3	60590.40	50902	52570	54452	56121	58003
Sensex	Daily	76808.48	0.71%	3	74619.40	76296	76552	76700	76956	77103
	Weekly	75527.95	1.73%	1	74856.70	72529	74029	74818	76318	77107
	Monthly	74775.74	-2.78%	-5	81359.20	71515	73145	75765	77395	80015

Gainers - Losers (Nifty 500 Stocks)

Gainers				Losers			
Company Name	Last Price	% Gain	Volume	Company Name	Last Price	% Loss	Volume
Fert and Chem	997.8	10.13%	906.75	Acutaas Chem	2,996.50	-3.24%	3106
Aditya Birla Re	1,315.70	6.10%	1245	Ather Energy	998.05	-2.86%	1030.5
Brigade Ent	720.25	5.28%	690.45	ABSL AMC	1,120.60	-2.22%	1156.4
COFORGE	1,464.80	4.44%	1419.9	ACME Solar	339.65	-2.19%	349.7
Coromandel Int	2,059.70	3.70%	1995	Berger Paints	510.50	-1.71%	521
Chambal Fert	490.00	3.35%	478.85	Bayer CropScien	4233.8	-1.34%	4295
AWL Agri	197.27	3.20%	191.99	Authum Invest	551.65	-1.26%	558.05



Nifty Daily chart with RSI indicator



BankNifty Daily chart with RSI indicator

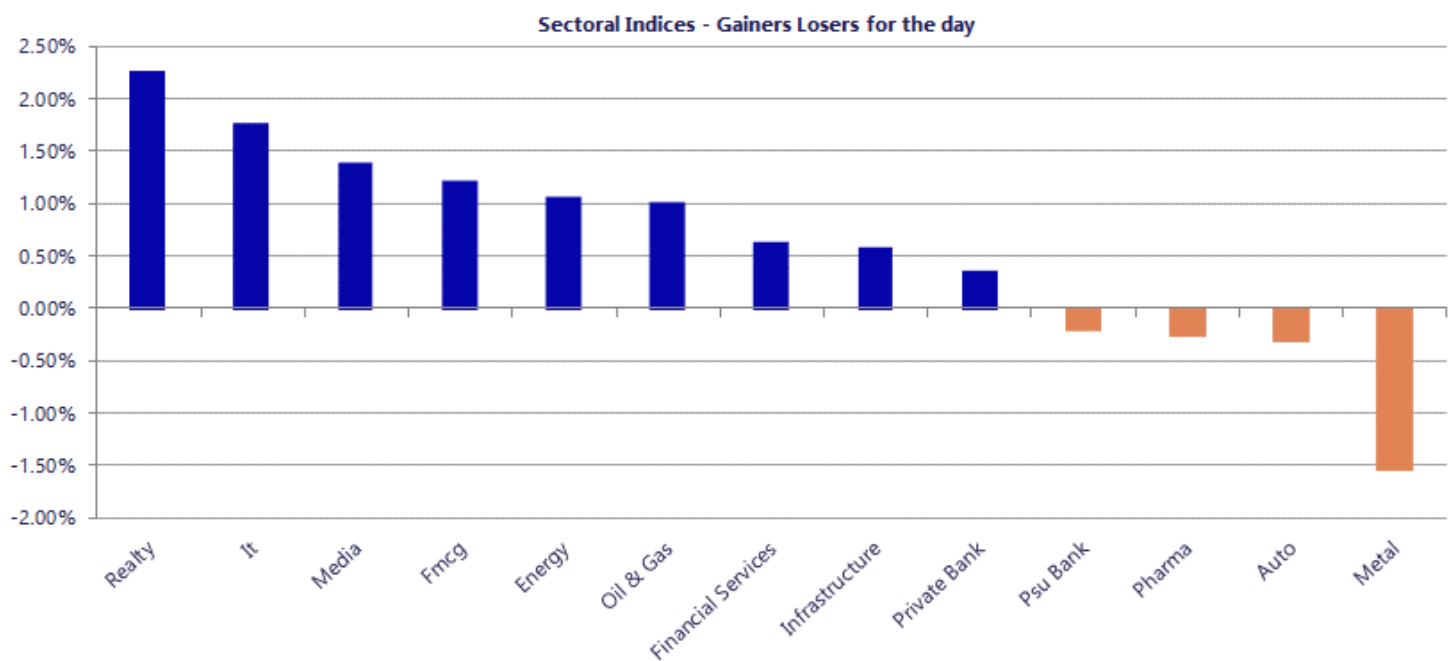


Breakouts - Cross above 200 DMA			
Company Name	LCP	Change %	200 DMA
Quest Lab	112.95	9.17	103.46
Paragon Fine &	50.5	6.54	47.4
Rel Ind Infra	852.2	6.29	801.79
PDS	335.65	3.55	324.13
Navkar Corp	107.05	3.39	103.54
Pansari Develop	293.05	3.04	284.4
Mahanagar Gas	1185.6	2.74	1153.93
NCL Industries	195.83	2.21	191.59
Cartrade	2383.8	2.20	2332.4
Salona Cotspin	269.1	2.11	263.53
Goa Carbon	405	1.98	397.15
SBCVCBSIUC	72.2	1.86	70.88
Mask Investment	155.39	1.67	152.84
Avenue Supermar	4201.3	1.61	4134.87
HEC Infra Proje	129.72	1.49	127.81
GeeCee Ventures	328.2	1.47	323.46
Foseco India	5239.4	1.46	5163.89
Chembond Materi	162.88	1.32	160.76

* Stocks crossing above its Simple Moving Average (200DMA)

Breakdown - Cross below 200 DMA			
Company Name	LCP	Change %	200 DMA
General Insuran	358.4	-5.51	379.29
Holmarc Opto Me	99.95	-3.15	103.2
Lloyds Luxuries	75.55	-3.10	77.97
Fidel Softech	155.15	-2.02	158.35
S D Retail	99	-1.95	100.97
Biofil Chem	35.15	-1.95	35.85
Suryalakshmi Co	57.92	-1.73	58.94
Kataria Industr	100.15	-1.65	101.83
Indoco Remedies	232.97	-1.53	236.59
Gujarat Gas	394.2	-1.31	399.44
IRM Energy	271.5	-1.29	275.04
Vishnusurya Pro	164	-1.16	165.93
Gateway Distri	58.77	-1.14	59.45
Deepak Nitrite	1641.3	-1.12	1659.86
Umiya Buildcon	85.82	-0.79	86.5
Aadhar Housing	485	-0.56	487.71
Roto Pumps	64.3	-0.54	64.65
Asahi Songwon	250.19	-0.52	251.49

* Stocks crossing below its Simple Moving Average (200DMA)



Nifty 50 Stocks - Summary Details											
Symbol	LTP	Chng	% Chng	Volume (lacs)	Turnover (crs.)	52w High	Diff with 52w H	52w Low	Diff with 52w L	365 days % chng	30 days % chng
NIFTY 50	23989.15	135.25	0.57%	3273.07	27953	26373	9.04%	22183	8.14%	1.46%	-3.84%
ADANIENT	2943.80	1.30	0.04%	18.52	549	3060	3.79%	1753	67.93%	8.39%	19.19%
ADANIPTS	1821.00	16.20	0.90%	22.16	402	1858	1.98%	1291	41.11%	1.44%	30.02%
APOLLOHOSP	8400.00	-68.50	-0.81%	2.63	222	8624	2.60%	6697	25.44%	3.93%	18.08%
ASIANPAINT	2750.00	10.70	0.39%	9.63	265	2986	7.89%	2115	30.02%	5.54%	22.51%
AXISBANK	1363.40	-4.90	-0.36%	77.09	1050	1418	3.87%	1043	30.78%	9.53%	12.18%
BAJAJ-AUTO	9945.00	2.00	0.02%	2.04	203	10834	8.21%	7859	26.55%	-4.17%	16.60%
BAJAJFINSV	1787.00	36.80	2.10%	20.43	365	2195	18.59%	1597	11.90%	3.41%	-11.89%
BAJFINANCE	959.50	17.20	1.83%	93.36	895	1103	12.97%	788	21.78%	5.39%	2.29%
BEL	407.85	-1.70	-0.42%	97.02	396	473	13.86%	361	12.92%	-3.73%	0.99%
BHARTIARTL	1857.00	15.80	0.86%	59.58	1101	2175	14.60%	1741	6.69%	-2.54%	-0.23%
CIPLA	1375.20	-6.10	-0.44%	6.14	85	1673	17.80%	1166	17.97%	-3.97%	-9.94%
COALINDIA	451.00	6.95	1.57%	72.63	327	491	8.19%	369	22.34%	-2.42%	14.37%
DRREDDY	1277.50	-2.00	-0.16%	4.31	55	1380	7.41%	1148	11.24%	-4.43%	-5.15%
EICHERMOT	7552.00	-72.50	-0.95%	4.54	344	8230	8.24%	5220	44.69%	7.66%	40.76%
ETERNAL	253.55	1.55	0.62%	194.84	492	368	31.18%	213	19.26%	5.13%	0.56%
GRASIM	3143.90	-20.60	-0.65%	3.08	97	3198	1.68%	2503	25.63%	7.16%	16.23%
HCLTECH	1160.50	41.20	3.68%	83.43	960	1780	34.81%	1090	6.52%	2.46%	-32.65%
HDFCBANK	784.75	7.40	0.95%	278.21	2182	1021	23.10%	727	8.00%	2.25%	-18.91%
HDFCLIFE	575.20	-6.00	-1.03%	20.66	119	821	29.92%	543	5.93%	-5.50%	-25.35%
HINDALCO	984.00	-29.90	-2.95%	112.00	1096	1176	16.33%	635	54.96%	-7.82%	51.48%
HINDUNILVR	2197.00	40.90	1.90%	13.37	293	2750	20.11%	2023	8.63%	-3.31%	-5.60%
ICICIBANK	1335.50	7.90	0.60%	130.69	1740	1500	10.97%	1188	12.45%	7.31%	-6.41%
INDIGO	4840.00	-40.40	-0.83%	8.50	412	6233	22.34%	3895	24.26%	12.17%	-10.08%
INFY	1145.00	10.10	0.89%	104.56	1193	1728	33.74%	1089	5.14%	2.32%	-29.49%
ITC	291.85	3.95	1.37%	144.67	421	428	31.83%	275	6.11%	-5.69%	-30.21%
JIOFIN	241.89	2.37	0.99%	155.06	375	339	28.56%	223	8.33%	3.79%	-17.77%
JSWSTEEL	1275.00	-21.50	-1.66%	11.11	142	1328	3.99%	981	29.92%	-0.30%	27.02%
KOTAKBANK	407.95	2.20	0.54%	90.80	370	453	9.98%	346	18.08%	5.40%	-4.64%
LT	4182.00	12.20	0.29%	26.48	1112	4440	5.81%	3288	27.19%	6.98%	15.25%
M&M	3137.00	2.70	0.09%	35.52	1114	3840	18.31%	2896	8.32%	0.45%	3.75%
MARUTI	13687.00	-118.00	-0.85%	2.81	386	17370	21.20%	12176	12.41%	3.52%	9.23%
MAXHEALTH	1025.40	-3.50	-0.34%	22.15	226	1314	21.98%	903	13.55%	-2.35%	-17.76%
NESTLEIND	1390.00	15.30	1.11%	18.99	265	1498	7.22%	1085	28.15%	-2.83%	16.33%
NTPC	355.90	7.80	2.24%	145.55	514	414	14.12%	316	12.79%	-9.96%	6.65%
ONGC	248.20	4.55	1.87%	174.68	431	308	19.28%	229	8.57%	-17.09%	-3.35%
POWERGRID	285.20	-0.50	-0.18%	81.47	232	325	12.23%	250	14.08%	-6.75%	-1.20%
RELIANCE	1328.60	21.60	1.65%	185.13	2456	1612	17.57%	1253	6.02%	-0.58%	-7.59%
SBILIFE	1766.00	6.50	0.37%	14.24	252	2132	17.17%	1700	3.86%	-5.28%	-1.77%
SBIN	1016.05	-4.80	-0.47%	96.94	983	1235	17.71%	782	29.98%	5.49%	28.21%
SHRIRAMFIN	1006.40	5.75	0.57%	45.45	455	1108	9.17%	567	77.65%	7.30%	48.84%
SUNPHARMA	1805.00	-1.00	-0.06%	13.74	247	1917	5.82%	1548	16.60%	-3.90%	7.10%
TATACONSUM	1130.00	29.60	2.69%	26.02	293	1283	11.90%	1007	12.19%	-8.43%	4.30%
TATASTEEL	196.08	-1.20	-0.61%	292.55	571	224	12.62%	150	30.89%	-9.57%	27.18%
TCS	2197.90	35.90	1.66%	30.80	674	3538	37.88%	2110	4.17%	-2.92%	-37.14%
TECHM	1450.00	24.40	1.71%	19.87	286	1854	21.79%	1304	11.19%	5.80%	-14.40%
TITAN	4335.00	51.50	1.20%	7.80	337	4605	5.86%	3303	31.24%	3.98%	26.09%
TMPV	393.15	-3.25	-0.82%	64.32	253	744	47.16%	294	33.59%	10.27%	-42.74%
TRENT	2898.00	-3.10	-0.11%	8.11	235	4174	30.57%	2184	32.71%	5.99%	-23.46%
ULTRACEMCO	11395.00	-71.00	-0.62%	2.34	267	13110	13.08%	10325	10.36%	-0.80%	-0.87%
WIPRO	182.58	1.20	0.66%	117.06	214	273	33.15%	176	3.84%	-3.91%	-30.55%

Disclaimer / Disclosures

ANALYST CERTIFICATION

I, Mrs. Vaishali Parekh B.com, Research Analyst, author and the name subscribed to this report, hereby certify that all of the views expressed in this research report accurately reflect our views about the subject issuer(s) or securities. We also certify that no part of our compensation was, is, or will be directly or indirectly related to the specific recommendation(s) or view(s) in this report.

Terms & conditions and other disclosures:

Prabhudas Lilladher Pvt. Ltd, Mumbai, India (hereinafter referred to as "PL") is engaged in the business of Stock Broking, Portfolio Manager, Depository Participant and distribution for third party financial products. PL is a subsidiary of Prabhudas Lilladher Advisory Services Pvt Ltd. which has its various subsidiaries engaged in business of commodity broking, investment banking, financial services (margin funding) and distribution of third party financial/other products, details in respect of which are available at www.plindia.com

This document has been prepared by the Research Division of PL and is meant for use by the recipient only as information and is not for circulation. This document is not to be reported or copied or made available to others without prior permission of PL. It should not be considered or taken as an offer to sell or a solicitation to buy or sell any security.

The information contained in this report has been obtained from sources that are considered to be reliable. However, PL has not independently verified the accuracy or completeness of the same. Neither PL nor any of its affiliates, its directors or its employees accepts any responsibility of whatsoever nature for the information, statements and opinion given, made available or expressed herein or for any omission therein.

Recipients of this report should be aware that past performance is not necessarily a guide to future performance and value of investments can go down as well. The suitability or otherwise of any investments will depend upon the recipient's particular circumstances and, in case of doubt, advice should be sought from an independent expert/advisor.

Either PL or its affiliates or its directors or its employees or its representatives or its clients or their relatives may have position(s), make market, act as principal or engage in transactions of securities of companies referred to in this report and they may have used the research material prior to publication.

PL may from time to time solicit or perform investment banking or other services for any company mentioned in this document.

PL is registered as Research Analyst under Securities and Exchange Board of India (Research Analysts) Regulations, 2014 PL submits that no material disciplinary action has been taken on us by any Regulatory Authority impacting Equity Research Analysis activities.

PL or its research analysts or its associates or his relatives do not have any financial interest in the subject company.

PL or its research analysts or its associates or his relatives do not have actual/beneficial ownership of one per cent or more securities of the subject company at the end of the month immediately preceding the date of publication of the research report.

PL or its research analysts or its associates or his relatives do not have any material conflict of interest at the time of publication of the research report.

PL or its associates might have received compensation from the subject company in the past twelve months.

PL or its associates might have managed or co-managed public offering of securities for the subject company in the past twelve months or mandated by the subject company for any other assignment in the past twelve months.

PL or its associates might have received any compensation for investment banking or merchant banking or brokerage services from the subject company in the past twelve months.

PL or its associates might have received any compensation for products or services other than investment banking or merchant banking or brokerage services from the subject company in the past twelve months PL or its associates might have received any compensation or other benefits from the subject company or third party in connection with the research report.

PL encourages independence in research report preparation and strives to minimize conflict in preparation of research report. PL or its analysts did not receive any compensation or other benefits from the subject Company or third party in connection with the preparation of the research report. PL or its Research Analysts do not have any material conflict of interest at the time of publication of this report.

It is confirmed that Mrs. Vaishali Parekh B.com, Research Analyst of this report has not received any compensation from the companies mentioned in the report in the preceding twelve months compensation of our Research Analysts is not based on any specific merchant banking, investment banking or brokerage service transactions.

The Research analysts for this report certifies that all of the views expressed in this report accurately reflect his or her personal views about the subject company or companies and its or their securities, and no part of his or her compensation was, is or will be, directly or indirectly related to specific recommendations or views expressed in this report.

The research analysts for this report has not served as an officer, director or employee of the subject company PL or its research analysts have not engaged in market making activity for the subject company

Our sales people, traders, and other professionals or affiliates may provide oral or written market commentary or trading strategies to our clients that reflect opinions that are contrary to the opinions expressed herein, and our proprietary trading and investing businesses may make investment decisions that are inconsistent with the recommendations expressed herein. In reviewing these materials, you should be aware that any or all of the foregoing, among other things, may give rise to real or potential conflicts of interest.

PL and its associates, their directors and employees may (a) from time to time, have a long or short position in, and buy or sell the securities of the subject company or (b) be engaged in any other transaction involving such securities and earn brokerage or other compensation or act as a market maker in the financial instruments of the subject company or act as an advisor or lender/borrower to the subject company or may have any other potential conflict of interests with respect to any recommendation and other related information and opinions.

Regd. Office: 3rd Floor, Sadhana House, 570, P. B. Marg, Behind Mahindra Tower, Worli, Mumbai - 400 018, India.