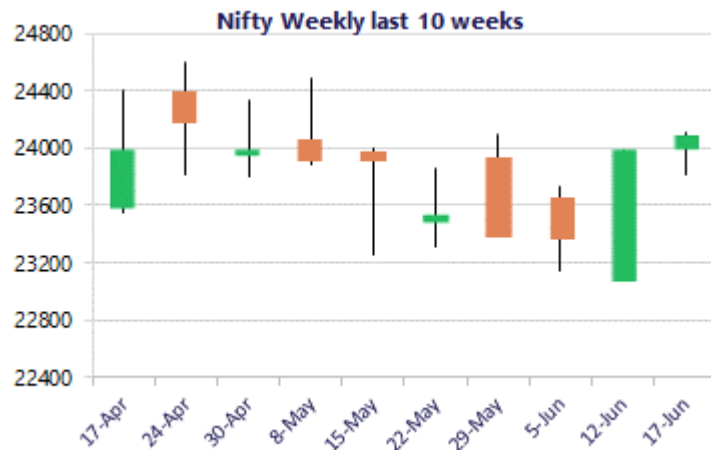
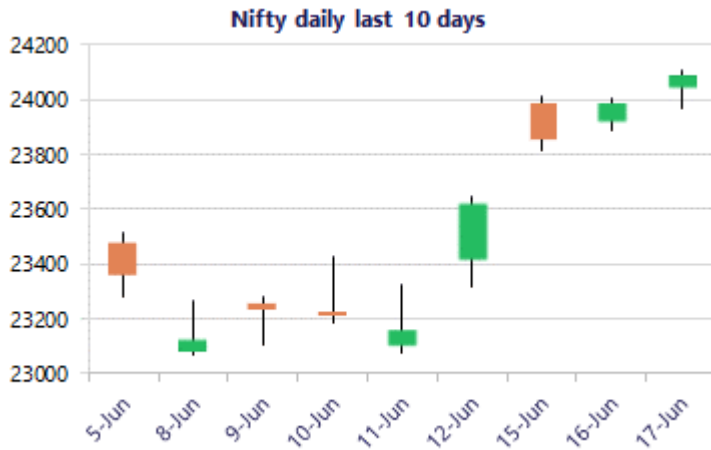


\* Sensex 77155.62 + 347.14

\* Nifty 24085.70 + 96.55

\* Bank Nifty 57585.05 + 287.90



\*Blue candle → Close rate > Open rate \* Red candle → Close rate < Open rate

### Nifty ends above the 24000 zone; bias optimistic

Nifty gained further with bias getting better and closed above the 24000 zone anticipating for further rise in the coming sessions. BankNifty has sustained above the important 200 period MA at 57000 level with bias and sentiment maintained with a positive approach for further upside move. The market breadth was positive with the advance decline indicating a ratio of 4:3 at close.

### Market Forecast

#### Nifty daily range 23900 - 24350

Nifty continued with the positive move to close above the 24000 zone after a long time with optimistic approach maintained and expecting for further rise in the coming sessions. As mentioned in our earlier report, the important resistance hurdle at 24350 -24400 zone needs to be breached decisively to establish conviction and clarity to carry on with the positive move further ahead having targets of 25000 and 25700 levels. The 50EMA at 23800 level would be the near-term important support which needs to be sustained.

BankNifty witnessed a rangebound session and witnessed a marginal gain to end near the 57600-zone sustaining above the important 200 period MA at 57000 level and with bias maintained positive can anticipate for further rise in the coming sessions. With a flag pattern indication on the daily chart, the index can trigger for a fresh upward move in the coming days with the 100 period MA at 56500 zone as the near-term support with upside targets of 59200 and 60500 levels expected.

The support for the day is seen at 23900 levels, while the resistance is seen at 24350 levels. BankNifty would have the daily range of 56800-58500 levels.

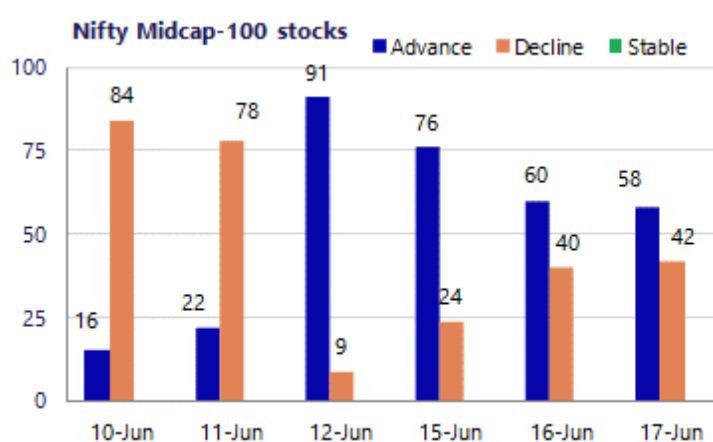
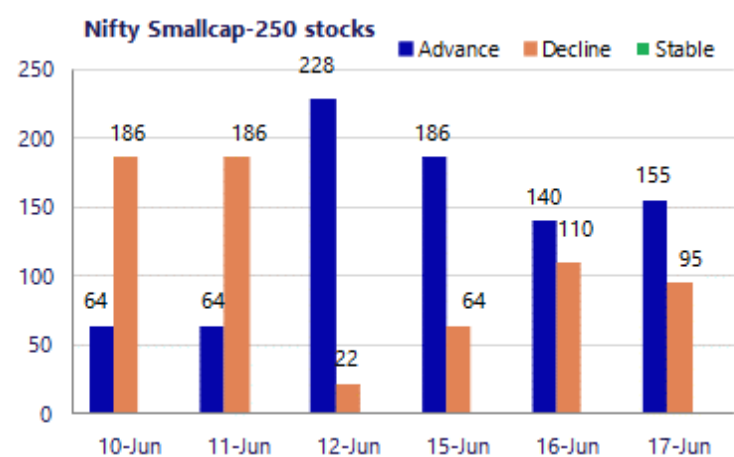
Sensex	Period	Closing	% Chng	Trend	Reversal	2 Sup	1 Sup	Pivot	1 Res	2 Res
Nifty	Daily	24085.70	0.40%	4	23609.75	23916	24001	24055	24139	24193
	Weekly	23622.90	1.10%	1	23593.30	22871	23247	23446	23822	24021
	Monthly	23547.75	-1.87%	-5	25345.55	22545	23046	23764	24266	24984
Bank Nifty	Daily	57585.05	0.50%	7	56897.20	57061	57323	57485	57747	57908
	Weekly	56814.80	4.25%	1	54282.95	52818	54816	55842	57840	58866
	Monthly	54239.20	-1.14%	-3	60590.40	50902	52570	54452	56121	58003
Sensex	Daily	77155.62	0.45%	4	75464.40	76597	76876	77048	77327	77498
	Weekly	75527.95	1.73%	1	74856.70	72529	74029	74818	76318	77107
	Monthly	74775.74	-2.78%	-5	81359.20	71515	73145	75765	77395	80015

**Gainers - Losers ( Nifty 500 Stocks )**
**Gainers**

Company Name	Last Price	% Gain	Volume
Bharat Dynamics	1309.8	5.91%	1236.5
Blue Star	1,695.60	4.58%	1634
AAVAS Financier	1452.4	4.23%	1399.9
Action Const	962.10	3.40%	934.2
Apollo Tyres	429.60	3.16%	424
Bharat Elec	419.85	3.02%	407
Anupam Rasayan	1,294.50	2.62%	1251

**Losers**

Company Name	Last Price	% Loss	Volume
Aarti Ind	479.20	-3.52%	496.7
Afcons Infra	319.1	-2.45%	326
ACME Solar	331.80	-2.31%	341
ABSL AMC	1,097.90	-2.03%	1120.6
Atul	6,455.00	-1.96%	6552
AWL Agri	193.59	-1.87%	198.29
Anant Raj	530.9	-1.81%	541



### Nifty Daily chart with RSI indicator



### BankNifty Daily chart with RSI indicator

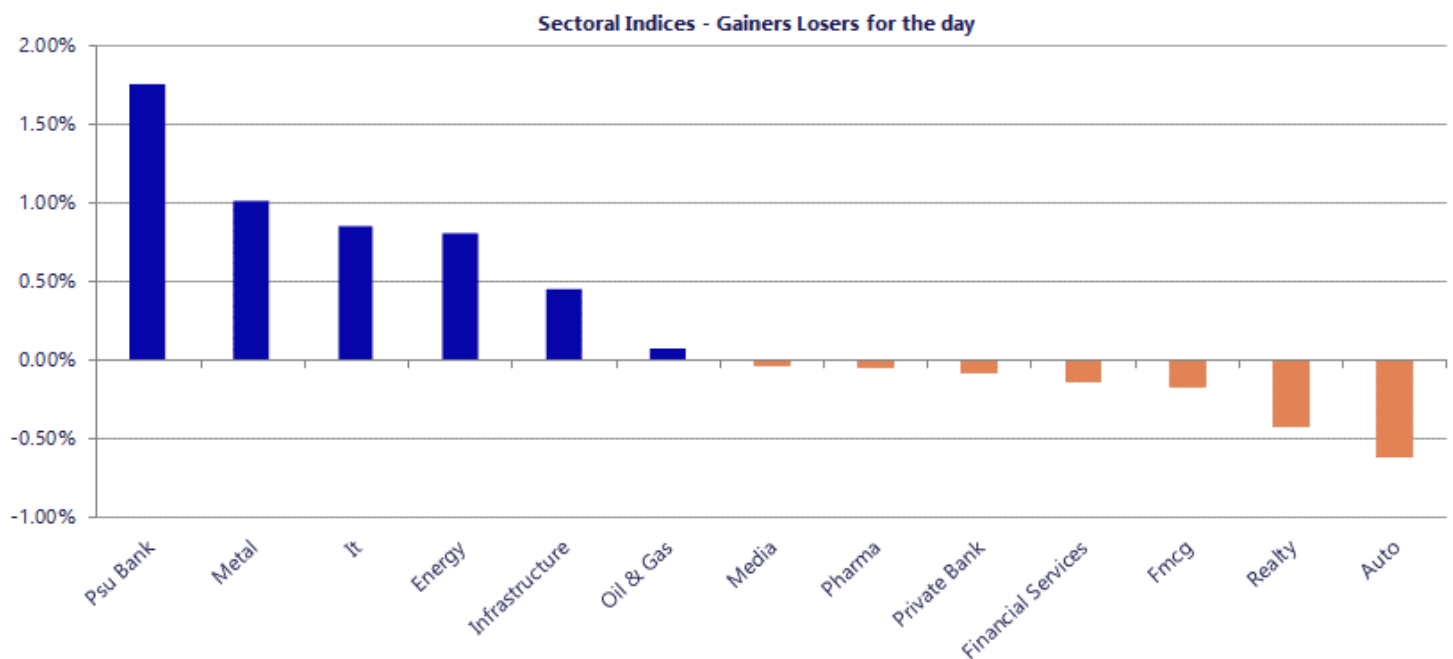


Breakouts - Cross above 200 DMA			
Company Name	LCP	Change %	200 DMA
Kirloskar Ind	3628.7	8.64	3340.24
SSFLPP	131.8	7.66	122.42
GSM Foils	218.7	4.72	208.85
Sejal Glass	761.25	4.46	728.75
Lamosaic India	33.5	3.84	32.26
Innomet Advance	111.9	3.23	108.4
Spandana Sphoor	256.25	3.17	248.38
TVS Electronics	485	3.14	470.22
Jainam Ferro	255.45	3.10	247.77
Anup Eng	2132.4	2.96	2071.17
Krystal Integra	600.3	2.30	586.82
Vishnusurya Pro	169.65	2.25	165.91
CG Consumer	275.9	2.22	269.91
TBO Tek	1455.6	1.94	1427.96
Lloyds Luxuries	79.3	1.93	77.8
Electronics Mar	118.47	1.85	116.32
UFO Moviez	75.78	1.77	74.46
Bank of Baroda	281.85	1.74	277.03

\* Stocks crossing above its Simple Moving Average (200DMA)

Breakdown - Cross below 200 DMA			
Company Name	LCP	Change %	200 DMA
Nitiraj Enginee	190.23	-3.24	196.59
TMPV	360.95	-2.93	371.86
RBZ Jewellers	133.69	-2.39	136.96
Stallion India	188	-2.09	192.01
Kotak Nifty100	20.76	-1.94	21.17
Smartworks Cowo	470.8	-1.12	476.11
SRM Contractors	493.8	-1.03	498.94
Norben Tea	72.38	-1.01	73.12
NTPC Green Ener	96.99	-1.00	97.97
Beardsell	28.55	-0.94	28.82
Omaxe	77.1	-0.90	77.8
SRG Housing Fin	278	-0.84	280.35
Siyaram Silk	615.05	-0.74	619.61
Master Compo.	345	-0.70	347.44
Pricol	569.85	-0.45	572.44
WE WIN	49.61	-0.42	49.82
Kotak Mahindra	404.5	-0.32	405.78
Cosmo First	747.05	-0.31	749.4

\* Stocks crossing below its Simple Moving Average (200DMA)



Nifty 50 Stocks - Summary Details											
Symbol	LTP	Chng	% Chng	Volume (lacs)	Turnover (crs.)	52w High	Diff with 52w H	52w Low	Diff with 52w L	365 days % chng	30 days % chng
NIFTY 50	24085.70	96.55	0.40%	3525.96	26943	26373	8.67%	22183	8.58%	1.87%	-3.09%
ADANIENT	2948.90	5.30	0.18%	12.45	367	3060	3.62%	1753	68.22%	8.58%	22.06%
ADANIPTS	1825.00	3.00	0.16%	26.98	490	1858	1.77%	1291	41.42%	1.67%	31.08%
APOLLOHOSP	8425.00	34.50	0.41%	1.85	156	8624	2.31%	6697	25.81%	4.24%	20.25%
ASIANPAINT	2735.70	-12.40	-0.45%	5.57	153	2986	8.37%	2115	29.35%	4.99%	20.79%
AXISBANK	1351.90	-13.80	-1.01%	47.62	645	1418	4.68%	1043	29.68%	8.60%	11.26%
BAJAJ-AUTO	10024.00	85.00	0.86%	3.02	302	10834	7.48%	7859	27.56%	-3.41%	18.01%
BAJAJFINSV	1765.00	-22.30	-1.25%	9.04	160	2195	19.59%	1597	10.52%	2.14%	-11.90%
BAJFINANCE	958.50	-1.15	-0.12%	56.82	544	1103	13.06%	788	21.65%	5.28%	3.85%
BEL	422.00	14.45	3.55%	245.00	1015	473	10.87%	361	16.83%	-0.39%	5.04%
BHARTIARTL	1874.20	21.20	1.14%	76.53	1426	2175	13.81%	1741	7.68%	-1.64%	1.05%
CIPLA	1350.20	-23.00	-1.67%	20.14	272	1673	19.29%	1166	15.83%	-5.72%	-10.20%
COALINDIA	455.95	5.00	1.11%	90.65	413	491	7.19%	369	23.68%	-1.35%	16.52%
DRREDDY	1269.00	-7.90	-0.62%	6.83	87	1376	7.77%	1148	10.50%	-5.06%	-3.78%
EICHERMOT	7510.00	-50.50	-0.67%	4.04	304	8230	8.75%	5305	41.56%	7.06%	40.61%
ETERNAL	257.85	4.25	1.68%	331.93	861	368	30.02%	213	21.28%	6.91%	4.29%
GRASIM	3160.80	20.50	0.65%	3.95	124	3200	1.22%	2503	26.31%	7.74%	18.32%
HCLTECH	1165.00	6.00	0.52%	22.63	264	1780	34.55%	1090	6.93%	2.86%	-32.64%
HDFCBANK	787.00	2.10	0.27%	324.04	2555	1021	22.88%	727	8.31%	2.54%	-18.43%
HDFCLIFE	582.90	8.50	1.48%	11.07	64	821	28.98%	543	7.35%	-4.24%	-24.69%
HINDALCO	1008.90	26.50	2.70%	108.53	1079	1176	14.21%	635	58.87%	-5.49%	57.22%
HINDUNILVR	2199.30	-0.60	-0.03%	15.11	333	2750	20.03%	2023	8.74%	-3.21%	-5.55%
ICICIBANK	1336.50	2.20	0.16%	80.26	1074	1500	10.90%	1188	12.54%	7.39%	-6.09%
INDIGO	4885.00	45.00	0.93%	8.72	424	6233	21.62%	3895	25.41%	13.21%	-8.01%
INFY	1156.00	12.40	1.08%	59.93	694	1728	33.10%	1089	6.15%	3.31%	-29.51%
ITC	290.90	-0.75	-0.26%	86.05	250	427	31.87%	275	5.76%	-5.99%	-30.31%
JIOFIN	242.86	0.91	0.38%	100.07	243	339	28.28%	223	8.76%	4.20%	-16.20%
JSWSTEEL	1286.80	12.50	0.98%	11.95	153	1328	3.10%	984	30.84%	0.63%	28.73%
KOTAKBANK	404.00	-3.85	-0.94%	116.54	471	453	10.86%	346	16.93%	4.38%	-5.47%
LT	4205.00	18.60	0.44%	13.13	551	4440	5.29%	3288	27.89%	7.57%	16.09%
M&M	3132.00	-5.90	-0.19%	31.87	998	3840	18.44%	2896	8.15%	0.28%	4.15%
MARUTI	13633.00	-58.00	-0.42%	2.42	330	17370	21.51%	12201	11.74%	3.12%	8.24%
MAXHEALTH	1029.40	5.30	0.52%	10.94	112	1314	21.68%	903	14.00%	-1.97%	-16.09%
NESTLEIND	1406.00	14.30	1.03%	18.77	264	1498	6.15%	1085	29.62%	-1.71%	19.05%
NTPC	355.50	-0.05	-0.01%	92.99	329	414	14.21%	316	12.66%	-10.06%	6.06%
ONGC	245.45	-2.75	-1.11%	128.16	314	308	20.18%	229	7.37%	-18.01%	-2.72%
POWERGRID	286.10	0.95	0.33%	60.07	171	325	11.96%	250	14.44%	-6.46%	-0.85%
RELIANCE	1332.10	3.30	0.25%	100.24	1332	1612	17.35%	1253	6.30%	-0.32%	-6.92%
SBILIFE	1801.90	34.30	1.94%	7.31	130	2132	15.48%	1700	5.97%	-3.36%	0.09%
SBIN	1026.50	11.20	1.10%	81.89	836	1235	16.86%	782	31.32%	6.57%	29.56%
SHRIRAMFIN	1005.00	-0.75	-0.07%	43.53	439	1108	9.30%	567	77.41%	7.15%	51.13%
SUNPHARMA	1821.00	20.30	1.13%	17.72	322	1917	4.99%	1548	17.64%	-3.05%	10.35%
TATACONSUM	1123.90	-7.00	-0.62%	9.31	105	1283	12.38%	1007	11.59%	-8.92%	4.88%
TATASTEEL	198.83	2.83	1.44%	224.87	445	224	11.39%	150	32.13%	-8.31%	30.29%
TCS	2221.00	22.00	1.00%	28.65	636	3538	37.22%	2110	5.26%	-1.90%	-36.82%
TECHM	1457.60	10.80	0.75%	21.27	312	1854	21.38%	1304	11.77%	6.36%	-15.19%
TITAN	4386.00	48.00	1.11%	6.24	272	4605	4.76%	3303	32.78%	5.20%	28.78%
TMPV	361.70	-31.90	-8.10%	519.81	1906	740	51.10%	294	22.90%	1.44%	-46.39%
TRENT	3108.00	210.20	7.25%	56.45	1715	4174	25.54%	2184	42.33%	13.67%	-17.14%
ULTRACEMCO	11380.00	-11.00	-0.10%	1.78	202	13110	13.20%	10325	10.22%	-0.93%	-0.03%
WIPRO	184.30	1.63	0.89%	161.24	298	273	32.52%	176	4.82%	-3.00%	-29.90%

## Disclaimer / Disclosures

### ANALYST CERTIFICATION

I, Mrs. Vaishali Parekh B.com, Research Analyst, author and the name subscribed to this report, hereby certify that all of the views expressed in this research report accurately reflect our views about the subject issuer(s) or securities. We also certify that no part of our compensation was, is, or will be directly or indirectly related to the specific recommendation(s) or view(s) in this report.

Terms & conditions and other disclosures:

Prabhudas Lilladher Pvt. Ltd, Mumbai, India (hereinafter referred to as "PL") is engaged in the business of Stock Broking, Portfolio Manager, Depository Participant and distribution for third party financial products. PL is a subsidiary of Prabhudas Lilladher Advisory Services Pvt Ltd. which has its various subsidiaries engaged in business of commodity broking, investment banking, financial services (margin funding) and distribution of third party financial/other products, details in respect of which are available at [www.plindia.com](http://www.plindia.com)

This document has been prepared by the Research Division of PL and is meant for use by the recipient only as information and is not for circulation. This document is not to be reported or copied or made available to others without prior permission of PL. It should not be considered or taken as an offer to sell or a solicitation to buy or sell any security.

The information contained in this report has been obtained from sources that are considered to be reliable. However, PL has not independently verified the accuracy or completeness of the same. Neither PL nor any of its affiliates, its directors or its employees accepts any responsibility of whatsoever nature for the information, statements and opinion given, made available or expressed herein or for any omission therein.

Recipients of this report should be aware that past performance is not necessarily a guide to future performance and value of investments can go down as well. The suitability or otherwise of any investments will depend upon the recipient's particular circumstances and, in case of doubt, advice should be sought from an independent expert/advisor.

Either PL or its affiliates or its directors or its employees or its representatives or its clients or their relatives may have position(s), make market, act as principal or engage in transactions of securities of companies referred to in this report and they may have used the research material prior to publication.

PL may from time to time solicit or perform investment banking or other services for any company mentioned in this document.

PL is registered as Research Analyst under Securities and Exchange Board of India (Research Analysts) Regulations, 2014 PL submits that no material disciplinary action has been taken on us by any Regulatory Authority impacting Equity Research Analysis activities.

PL or its research analysts or its associates or his relatives do not have any financial interest in the subject company.

PL or its research analysts or its associates or his relatives do not have actual/beneficial ownership of one per cent or more securities of the subject company at the end of the month immediately preceding the date of publication of the research report.

PL or its research analysts or its associates or his relatives do not have any material conflict of interest at the time of publication of the research report.

PL or its associates might have received compensation from the subject company in the past twelve months.

PL or its associates might have managed or co-managed public offering of securities for the subject company in the past twelve months or mandated by the subject company for any other assignment in the past twelve months.

PL or its associates might have received any compensation for investment banking or merchant banking or brokerage services from the subject company in the past twelve months.

PL or its associates might have received any compensation for products or services other than investment banking or merchant banking or brokerage services from the subject company in the past twelve months PL or its associates might have received any compensation or other benefits from the subject company or third party in connection with the research report.

PL encourages independence in research report preparation and strives to minimize conflict in preparation of research report. PL or its analysts did not receive any compensation or other benefits from the subject Company or third party in connection with the preparation of the research report. PL or its Research Analysts do not have any material conflict of interest at the time of publication of this report.

It is confirmed that Mrs. Vaishali Parekh B.com, Research Analyst of this report has not received any compensation from the companies mentioned in the report in the preceding twelve months compensation of our Research Analysts is not based on any specific merchant banking, investment banking or brokerage service transactions.

The Research analysts for this report certifies that all of the views expressed in this report accurately reflect his or her personal views about the subject company or companies and its or their securities, and no part of his or her compensation was, is or will be, directly or indirectly related to specific recommendations or views expressed in this report.

The research analysts for this report has not served as an officer, director or employee of the subject company PL or its research analysts have not engaged in market making activity for the subject company

Our sales people, traders, and other professionals or affiliates may provide oral or written market commentary or trading strategies to our clients that reflect opinions that are contrary to the opinions expressed herein, and our proprietary trading and investing businesses may make investment decisions that are inconsistent with the recommendations expressed herein. In reviewing these materials, you should be aware that any or all of the foregoing, among other things, may give rise to real or potential conflicts of interest.

PL and its associates, their directors and employees may (a) from time to time, have a long or short position in, and buy or sell the securities of the subject company or (b) be engaged in any other transaction involving such securities and earn brokerage or other compensation or act as a market maker in the financial instruments of the subject company or act as an advisor or lender/borrower to the subject company or may have any other potential conflict of interests with respect to any recommendation and other related information and opinions.

**Regd. Office:** 3<sup>rd</sup> Floor, Sadhana House, 570, P. B. Marg, Behind Mahindra Tower, Worli, Mumbai - 400 018, India.