

* Sensex 77409.98 + 254.36

* Nifty 24168.00 + 82.30

* Bank Nifty 57963.80 + 378.75

Market Preview

Nifty gains further; targets hurdle of 24400 zone

Nifty surged ahead with bias and sentiment getting better and sustaining above the 24000 zone can anticipate for further rise in the coming days. BankNifty gained momentum reaching the 58000 zone and with bias getting stronger can expect for further upward move in the coming sessions. The market breadth was once again on the positive side with the advance decline indicating a ratio of 4:3 at close.

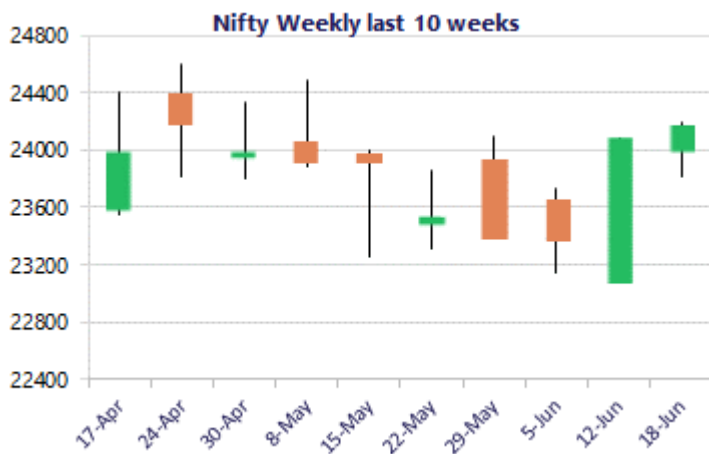
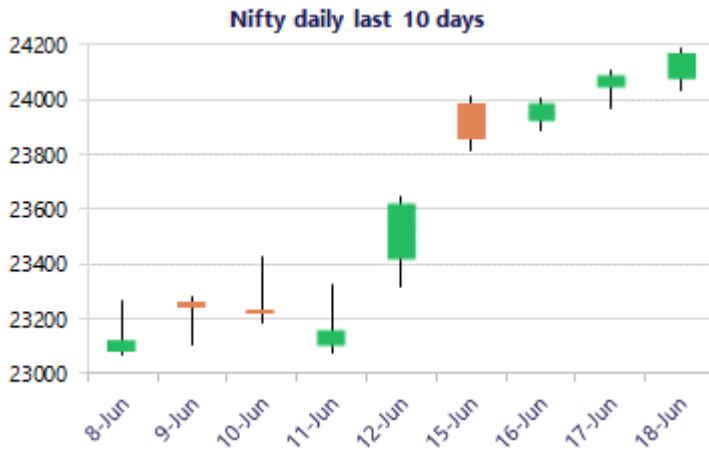
Market Forecast

Nifty daily range 24000 - 24400

Nifty continue to gain strength with steady rise visible on the daily chart and sustaining above the 24000 zone is aiming to conquer the tough resistance hurdle at 24400 zone which shall establish conviction and clarity for further journey of the index. The 50EMA zone at 23800 would be the important support for the index which needs to be sustained whereas on the upside, the 200 period MA at 23900 level would be the target expected and resistance zone for the coming days.

BankNifty witnessed a significant gain during the session and with a flag pattern breakout visible sustaining above the important 200 period MA at 57000 level, the index can anticipate for further targets of 59200 and 60500 levels in the coming days with bias getting better. As mentioned earlier, the index would have the 100 period MA at 56500 zone as the near-term support which needs to be sustained to maintain the overall bias intact.

The support for the day is seen at 24000 levels, while the resistance is seen at 24400 levels. BankNifty would have the daily range of 57000-59200 levels.



*Blue candle → Close rate > Open rate * Red candle → Close rate < Open rate

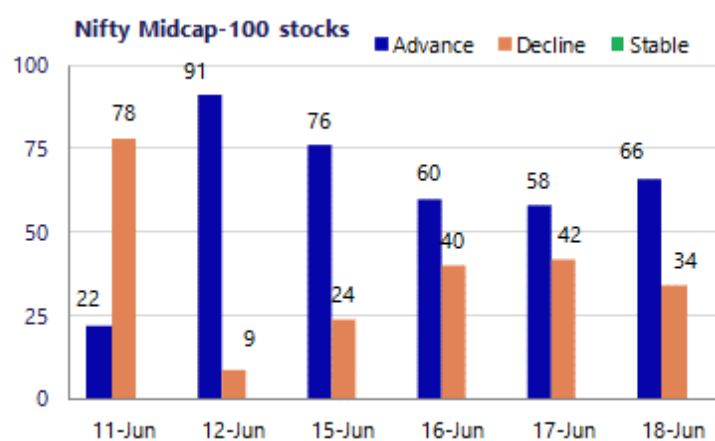
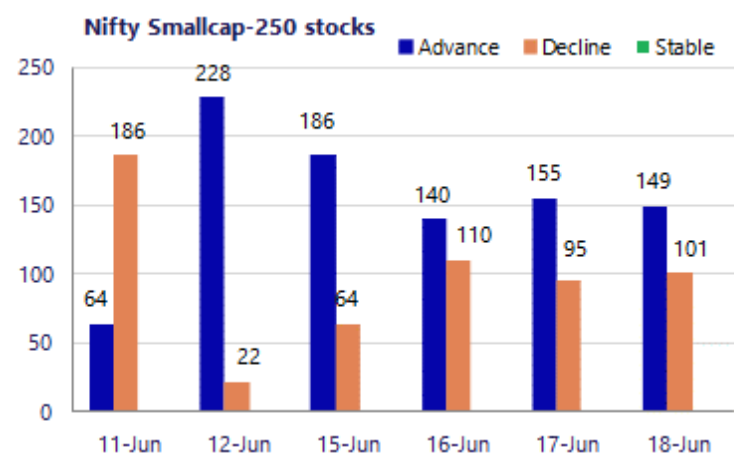
Sensex	Period	Closing	% Chng	Trend	Reversal	2 Sup	1 Sup	Pivot	1 Res	2 Res
Nifty	Daily	24168.00	0.34%	5	23798.90	23979	24074	24131	24226	24284
	Weekly	23622.90	1.10%	1	23593.30	22871	23247	23446	23822	24021
	Monthly	23547.75	-1.87%	-5	25345.55	22545	23046	23764	24266	24984
Bank Nifty	Daily	57963.80	0.66%	8	57344.85	57418	57691	57856	58129	58294
	Weekly	56814.80	4.25%	1	54282.95	52818	54816	55842	57840	58866
	Monthly	54239.20	-1.14%	-3	60590.40	50902	52570	54452	56121	58003
Sensex	Daily	77409.98	0.33%	5	76158.60	76746	77078	77285	77617	77824
	Weekly	75527.95	1.73%	1	74856.70	72529	74029	74818	76318	77107
	Monthly	74775.74	-2.78%	-5	81359.20	71515	73145	75765	77395	80015

Gainers - Losers (Nifty 500 Stocks)
Gainers

Company Name	Last Price	% Gain	Volume
Bata India	789.9	16.42%	683.95
Five-Star Busin	518.85	6.86%	489.95
ABSL AMC	1167.1	6.30%	1098.7
FSN E-Co Nykaa	298.10	6.10%	282.45
Carborundum	1,192.20	5.48%	1138
Aditya Infotech	3,513.70	4.94%	3374
Adani Power	230.57	4.61%	220.4

Losers

Company Name	Last Price	% Loss	Volume
Elecon Eng	535.00	-4.23%	565
Chennai Petro	1119.4	-3.92%	1155
Emmvee Photovol	333.70	-2.78%	343.25
Cohance Life	413.80	-2.67%	428
Asahi India	861.30	-2.56%	885
Central Bank	33.1	-2.27%	33.87
Ather Energy	969.05	-2.14%	995.65



Nifty Daily chart with RSI indicator



BankNifty Daily chart with RSI indicator

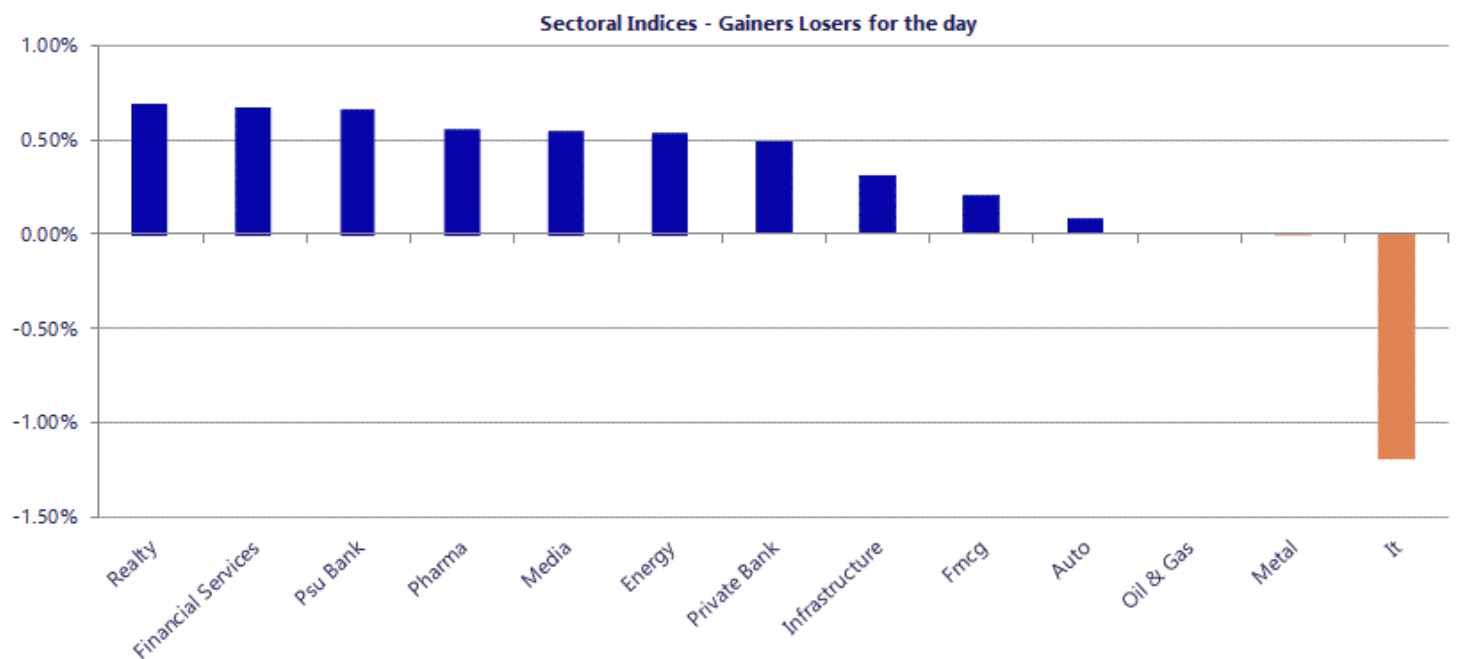


Breakouts - Cross above 200 DMA			
Company Name	LCP	Change %	200 DMA
Paramount Speci	34.55	9.09	31.67
Redington	271.95	7.05	254.05
Gokaldas Export	784.1	6.81	734.14
Dynamic Cables	366.55	6.72	343.46
Five-Star Busin	518.85	3.97	499.04
Den Networks	31.31	3.54	30.24
Kirloskar Ferro	473.7	3.40	458.12
Master Compo.	359	3.34	347.39
Siyaram Silk	638.8	3.10	619.61
Konstelec	51.1	2.94	49.64
PG Electroplast	564.25	2.72	549.32
Max Financial	1688.2	2.63	1644.9
Neptune Petroch	191.5	2.63	186.59
Cosmo First	766.8	2.51	748.04
Responsive Ind	185.72	2.48	181.22
Jindal Worldwid	30.39	2.32	29.7
Max Healthcare	1090.45	2.22	1066.8
MAS Financial S	320.05	2.06	313.59

* Stocks crossing above its Simple Moving Average (200DMA)

Breakdown - Cross below 200 DMA			
Company Name	LCP	Change %	200 DMA
Varvee Global	67.3	-4.24	70.28
PVP Ventures	29.42	-3.79	30.58
HEC Infra Proje	124.35	-2.49	127.53
Regaal Resource	79.04	-2.06	80.7
Hemisphere	138.77	-1.35	140.67
Butterfly	651.85	-1.23	659.98
MRPL	159.07	-0.93	160.57
Dharmaj Crop	264.9	-0.86	267.21
ICE Make Refrig	751.4	-0.76	757.17
UFO Moviez	73.98	-0.64	74.46
M TEK COPPER	58.74	-0.63	59.11
Nagreeka Cap	27.66	-0.61	27.83
AFL	478.1	-0.58	480.88
Automotive Axle	1785.5	-0.52	1794.91
Poddar Pigments	255.65	-0.34	256.52
Ndr Auto Compon	836.95	-0.27	839.2
3i Infotech	17.37	-0.23	17.41
Siddhika	204.35	-0.22	204.81

* Stocks crossing below its Simple Moving Average (200DMA)



Nifty 50 Stocks - Summary Details											
Symbol	LTP	Chng	% Chng	Volume (lacs)	Turnover (crs.)	52w High	Diff with 52w H	52w Low	Diff with 52w L	365 days % chng	30 days % chng
NIFTY 50	24168.00	82.30	0.34%	3399.42	28652	26373	8.36%	22183	8.95%	2.19%	-2.60%
ADANIEN	3032.00	80.10	2.71%	17.74	528	3060	0.91%	1753	72.96%	12.72%	27.00%
ADANIPTS	1845.10	16.50	0.90%	16.44	302	1858	0.68%	1291	42.98%	3.21%	34.42%
APOLLOHOSP	8415.00	-12.50	-0.15%	3.04	256	8624	2.42%	6697	25.66%	4.92%	21.37%
ASIANPAINT	2752.90	14.90	0.54%	6.01	165	2986	7.80%	2115	30.16%	5.31%	20.67%
AXISBANK	1358.50	7.60	0.56%	51.86	704	1418	4.22%	1043	30.31%	9.74%	11.26%
BAJAJ-AUTO	10096.00	54.00	0.54%	2.20	221	10834	6.81%	7859	28.47%	-1.01%	19.23%
BAJAJFINSV	1770.80	6.20	0.35%	10.11	178	2195	19.33%	1597	10.88%	1.01%	-10.63%
BAJFINANCE	958.70	0.30	0.03%	57.50	549	1103	13.04%	788	21.68%	4.08%	4.32%
BEL	428.10	8.25	1.96%	235.90	1005	473	9.58%	361	18.52%	0.35%	6.89%
BHARTIARTL	1874.20	-1.50	-0.08%	42.63	798	2175	13.81%	1741	7.68%	-3.30%	0.44%
CIPLA	1358.50	7.70	0.57%	9.09	123	1673	18.80%	1166	16.54%	-4.75%	-9.32%
COALINDIA	452.30	-3.45	-0.76%	53.64	243	491	7.93%	369	22.69%	-2.12%	15.87%
DRREDDY	1272.00	3.00	0.24%	7.74	98	1376	7.55%	1148	10.76%	-4.45%	-3.14%
EICHERMOT	7593.50	84.50	1.13%	4.86	370	8230	7.73%	5305	43.14%	9.84%	40.80%
ETERNAL	258.90	0.50	0.19%	179.25	462	368	29.73%	213	21.78%	7.25%	4.22%
GRASIM	3142.90	-7.50	-0.24%	6.67	209	3200	1.78%	2503	25.59%	6.76%	17.47%
HCLTECH	1159.60	-7.20	-0.62%	33.68	390	1780	34.86%	1090	6.43%	1.13%	-32.42%
HDFCBANK	800.80	13.70	1.74%	414.90	3308	1021	21.53%	727	10.20%	4.18%	-17.18%
HDFCLIFE	591.20	9.40	1.62%	22.43	132	821	27.97%	543	8.88%	-2.27%	-22.84%
HINDALCO	1012.00	4.10	0.41%	61.85	623	1176	13.95%	635	59.36%	-3.90%	56.81%
HINDUNILVR	2213.50	15.90	0.72%	11.20	248	2750	19.51%	2023	9.44%	-1.81%	-3.65%
ICICIBANK	1341.50	4.70	0.35%	134.67	1806	1500	10.57%	1188	12.96%	7.23%	-5.03%
INDIGO	5014.00	135.60	2.78%	11.29	560	6233	19.55%	3895	28.72%	17.27%	-4.91%
INFY	1127.40	-30.30	-2.62%	167.80	1897	1728	34.76%	1089	3.53%	-1.32%	-30.96%
ITC	290.95	0.20	0.07%	104.04	302	427	31.86%	275	5.78%	-6.19%	-30.04%
JIOFIN	244.65	1.67	0.69%	94.52	230	339	27.75%	223	9.56%	5.17%	-15.10%
JSWSTEEL	1296.00	8.80	0.68%	6.86	89	1328	2.41%	984	31.77%	0.25%	31.39%
KOTAKBANK	403.00	-1.50	-0.37%	93.42	376	453	11.08%	346	16.64%	2.86%	-5.51%
LT	4196.00	-11.70	-0.28%	14.84	623	4440	5.50%	3288	27.61%	7.10%	16.51%
M&M	3116.50	-16.40	-0.52%	24.32	763	3840	18.84%	2896	7.61%	1.06%	2.48%
MARUTI	13505.00	-125.00	-0.92%	3.74	505	17370	22.25%	12201	10.69%	3.76%	5.94%
MAXHEALTH	1092.45	66.30	6.46%	68.71	741	1314	16.88%	903	20.98%	3.20%	-7.55%
NESTLEIND	1400.00	-7.30	-0.52%	10.65	149	1498	6.55%	1085	29.07%	-2.21%	19.62%
NTPC	362.00	6.45	1.81%	122.59	441	414	12.64%	316	14.72%	-6.77%	8.90%
ONGC	245.45	0.45	0.18%	138.14	338	308	20.18%	229	7.37%	-17.41%	-1.96%
POWERGRID	289.20	2.85	1.00%	83.81	240	325	11.00%	250	15.68%	-2.48%	0.66%
RELIANCE	1331.00	-1.70	-0.13%	154.94	2057	1612	17.42%	1253	6.21%	-0.37%	-6.93%
SBILIFE	1807.40	13.80	0.77%	7.84	141	2132	15.23%	1700	6.29%	-2.85%	0.57%
SBIN	1042.50	16.00	1.56%	110.47	1147	1235	15.57%	782	33.36%	10.98%	31.65%
SHRIRAMFIN	1006.50	-1.00	-0.10%	33.64	338	1108	9.16%	567	77.67%	7.80%	52.02%
SUNPHARMA	1826.50	6.10	0.34%	20.55	374	1917	4.70%	1548	17.99%	-4.16%	10.83%
TATACONSUM	1111.00	-13.50	-1.20%	8.72	97	1283	13.39%	1007	10.31%	-9.75%	4.30%
TATASTEEL	200.50	1.49	0.75%	221.10	441	224	10.65%	150	33.24%	-4.39%	31.81%
TCS	2202.50	-20.50	-0.92%	37.35	821	3538	37.75%	2110	4.38%	-3.53%	-36.19%
TECHM	1447.80	-14.60	-1.00%	22.73	329	1854	21.91%	1304	11.02%	1.24%	-15.37%
TITAN	4389.00	8.50	0.19%	5.63	246	4605	4.69%	3303	32.88%	5.26%	26.56%
TMPV	364.55	3.60	1.00%	226.53	822	740	50.72%	294	23.87%	3.23%	-45.61%
TRENT	3182.00	79.20	2.55%	36.95	1169	4174	23.77%	2184	45.72%	18.37%	-16.77%
ULTRACEMCO	11444.00	71.00	0.62%	3.22	366	13110	12.71%	10325	10.84%	-1.01%	0.33%
WIPRO	182.95	-1.52	-0.82%	181.61	332	273	33.01%	176	4.05%	-4.80%	-30.06%

Disclaimer / Disclosures

ANALYST CERTIFICATION

I, Mrs. Vaishali Parekh B.com, Research Analyst, author and the name subscribed to this report, hereby certify that all of the views expressed in this research report accurately reflect our views about the subject issuer(s) or securities. We also certify that no part of our compensation was, is, or will be directly or indirectly related to the specific recommendation(s) or view(s) in this report.

Terms & conditions and other disclosures:

Prabhudas Lilladher Pvt. Ltd, Mumbai, India (hereinafter referred to as "PL") is engaged in the business of Stock Broking, Portfolio Manager, Depository Participant and distribution for third party financial products. PL is a subsidiary of Prabhudas Lilladher Advisory Services Pvt Ltd. which has its various subsidiaries engaged in business of commodity broking, investment banking, financial services (margin funding) and distribution of third party financial/other products, details in respect of which are available at www.plindia.com

This document has been prepared by the Research Division of PL and is meant for use by the recipient only as information and is not for circulation. This document is not to be reported or copied or made available to others without prior permission of PL. It should not be considered or taken as an offer to sell or a solicitation to buy or sell any security.

The information contained in this report has been obtained from sources that are considered to be reliable. However, PL has not independently verified the accuracy or completeness of the same. Neither PL nor any of its affiliates, its directors or its employees accepts any responsibility of whatsoever nature for the information, statements and opinion given, made available or expressed herein or for any omission therein.

Recipients of this report should be aware that past performance is not necessarily a guide to future performance and value of investments can go down as well. The suitability or otherwise of any investments will depend upon the recipient's particular circumstances and, in case of doubt, advice should be sought from an independent expert/advisor.

Either PL or its affiliates or its directors or its employees or its representatives or its clients or their relatives may have position(s), make market, act as principal or engage in transactions of securities of companies referred to in this report and they may have used the research material prior to publication.

PL may from time to time solicit or perform investment banking or other services for any company mentioned in this document.

PL is registered as Research Analyst under Securities and Exchange Board of India (Research Analysts) Regulations, 2014 PL submits that no material disciplinary action has been taken on us by any Regulatory Authority impacting Equity Research Analysis activities.

PL or its research analysts or its associates or his relatives do not have any financial interest in the subject company.

PL or its research analysts or its associates or his relatives do not have actual/beneficial ownership of one per cent or more securities of the subject company at the end of the month immediately preceding the date of publication of the research report.

PL or its research analysts or its associates or his relatives do not have any material conflict of interest at the time of publication of the research report.

PL or its associates might have received compensation from the subject company in the past twelve months.

PL or its associates might have managed or co-managed public offering of securities for the subject company in the past twelve months or mandated by the subject company for any other assignment in the past twelve months.

PL or its associates might have received any compensation for investment banking or merchant banking or brokerage services from the subject company in the past twelve months.

PL or its associates might have received any compensation for products or services other than investment banking or merchant banking or brokerage services from the subject company in the past twelve months PL or its associates might have received any compensation or other benefits from the subject company or third party in connection with the research report.

PL encourages independence in research report preparation and strives to minimize conflict in preparation of research report. PL or its analysts did not receive any compensation or other benefits from the subject Company or third party in connection with the preparation of the research report. PL or its Research Analysts do not have any material conflict of interest at the time of publication of this report.

It is confirmed that Mrs. Vaishali Parekh B.com, Research Analyst of this report has not received any compensation from the companies mentioned in the report in the preceding twelve months compensation of our Research Analysts is not based on any specific merchant banking, investment banking or brokerage service transactions.

The Research analysts for this report certifies that all of the views expressed in this report accurately reflect his or her personal views about the subject company or companies and its or their securities, and no part of his or her compensation was, is or will be, directly or indirectly related to specific recommendations or views expressed in this report.

The research analysts for this report has not served as an officer, director or employee of the subject company PL or its research analysts have not engaged in market making activity for the subject company

Our sales people, traders, and other professionals or affiliates may provide oral or written market commentary or trading strategies to our clients that reflect opinions that are contrary to the opinions expressed herein, and our proprietary trading and investing businesses may make investment decisions that are inconsistent with the recommendations expressed herein. In reviewing these materials, you should be aware that any or all of the foregoing, among other things, may give rise to real or potential conflicts of interest.

PL and its associates, their directors and employees may (a) from time to time, have a long or short position in, and buy or sell the securities of the subject company or (b) be engaged in any other transaction involving such securities and earn brokerage or other compensation or act as a market maker in the financial instruments of the subject company or act as an advisor or lender/borrower to the subject company or may have any other potential conflict of interests with respect to any recommendation and other related information and opinions.

Regd. Office: 3rd Floor, Sadhana House, 570, P. B. Marg, Behind Mahindra Tower, Worli, Mumbai - 400 018, India.