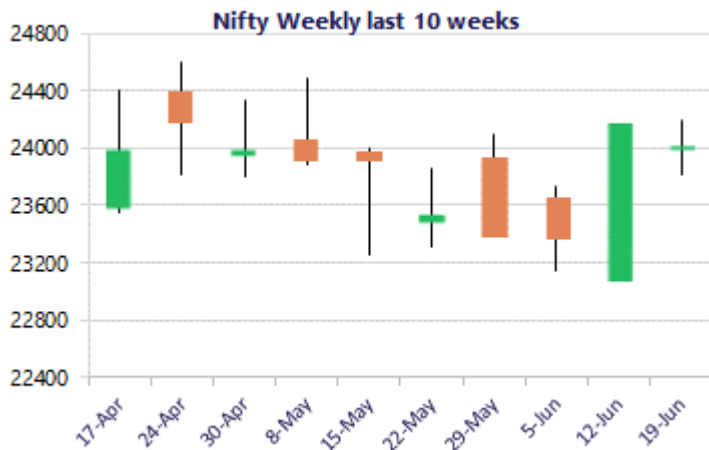
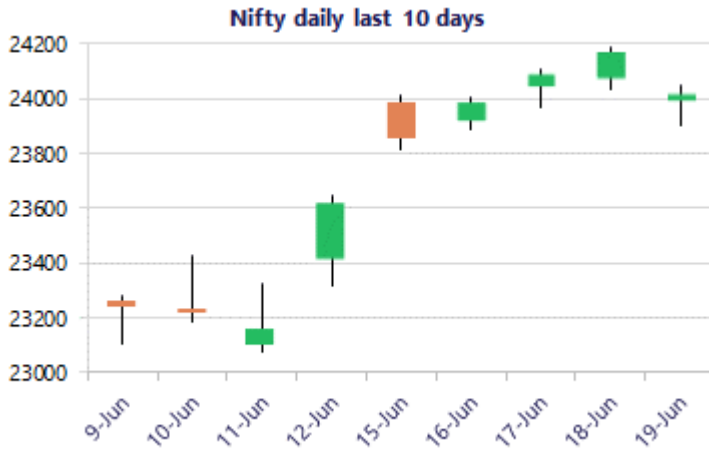


* Sensex 76802.90 - 607.08

* Nifty 24013.10 - 154.90

* Bank Nifty 57685.75 - 278.05



*Blue candle → Close rate > Open rate * Red candle → Close rate < Open rate

Market Preview

Nifty ends near 24000 zone

Nifty after a weak start below the 24000 level witnessed gradual recovery and closed near the 24000 zone with bias still maintained with a cautiously positive approach expecting for further rise. BankNifty witnessed some profit booking and remained rangebound for rest part of the session closing near the 57700 zone. The market breadth was flat with the advance decline indicating a neutral ratio at close.

Market Forecast

Nifty daily range 23800 - 24200

Nifty witnessed a gap down opening below the 24000 zone on the back of weak cues from the IT sector which dragged the index to a weak start and thereafter, with consolidation visible closed the session just above the 24000 zone. With the overall bias still maintained positive, one can expect for further upward move once the support zone near the 50EMA at 23800 level is sustained and with conviction established, can anticipate for further rise in the coming days.

BankNifty indicated a weak start with some profit booking witnessed and having a gradual recovery in the second half closed near the 57700 zone with bias maintained with a cautiously positive approach. The important 200 period MA at 57000 level would be the near-term support which needs to be sustained as of now, and on the upside, can anticipate the index to achieve further targets of 59200 and 60500 levels in the coming days.

The support for the day is seen at 23800 levels, while the resistance is seen at 24200 levels. BankNifty would have the daily range of 57000-58500 levels.

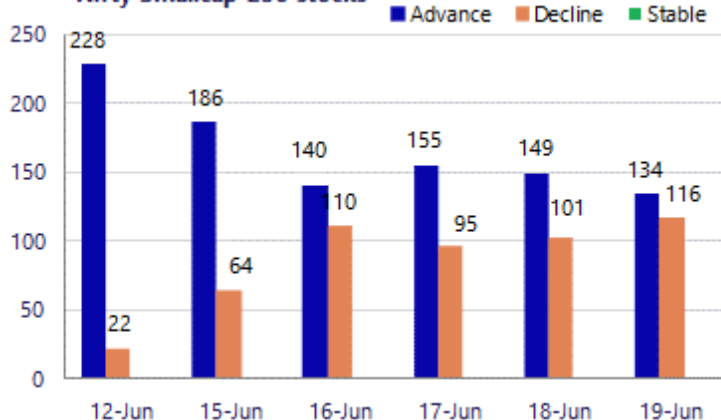
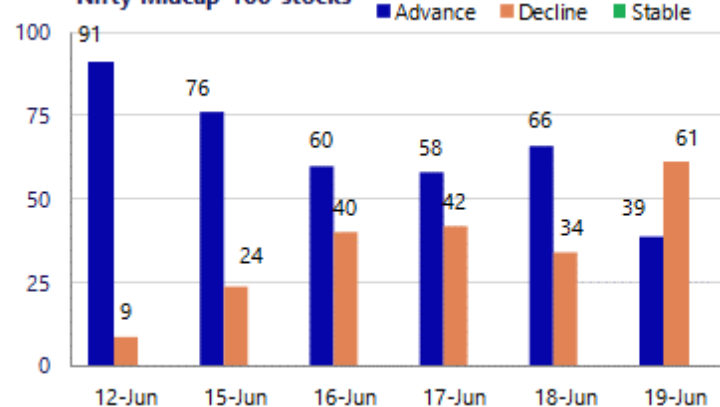
Sensex	Period	Closing	% Chng	Trend	Reversal	2 Sup	1 Sup	Pivot	1 Res	2 Res
Nifty	Daily	24013.10	-0.64%	6	23917.65	23842	23928	23987	24073	24133
	Weekly	24013.10	1.65%	2	23546.40	23635	23824	24007	24196	24378
	Monthly	23547.75	-1.87%	-5	25345.55	22545	23046	23764	24266	24984
Bank Nifty	Daily	57685.75	-0.48%	9	57542.40	57311	57499	57652	57839	57992
	Weekly	57685.75	1.53%	2	54948.70	56649	57168	57594	58113	58539
	Monthly	54239.20	-1.14%	-3	60590.40	50902	52570	54452	56121	58003
Sensex	Daily	76802.90	-0.78%	6	76551.40	76293	76548	76725	76980	77157
	Weekly	76802.90	1.69%	2	74604.65	75460	76131	76812	77483	78164
	Monthly	74775.74	-2.78%	-5	81359.20	71515	73145	75765	77395	80015

Gainers - Losers (Nifty 500 Stocks)
Gainers

Company Name	Last Price	% Gain	Volume
Berger Paints	550.7	9.04%	506
Caplin Labs	2,503.50	6.11%	2346
Aadhar Housing	515.1	5.89%	486.45
Cemindia Proj	1,252.00	5.00%	1190
Bharat Dynamics	1,373.40	4.70%	1309.3
Carborundum	1,241.70	4.15%	1176.3
Bharti Hexacom	1,494.50	3.94%	1439

Losers

Company Name	Last Price	% Loss	Volume
Bata India	747.70	-5.34%	785
AWL Agri	184.31	-4.22%	192.43
Balrampur Chini	531.60	-4.07%	554.5
Aditya Birla Re	1,279.50	-3.04%	1318.3
Bandhan Bank	208.09	-2.89%	214
ABLBL	97.18	-2.14%	98.9
Aegis Vopak	238.35	-1.95%	244

Nifty Smallcap-250 stocks

Nifty Midcap-100 stocks


Nifty Daily chart with RSI indicator



BankNifty Daily chart with RSI indicator

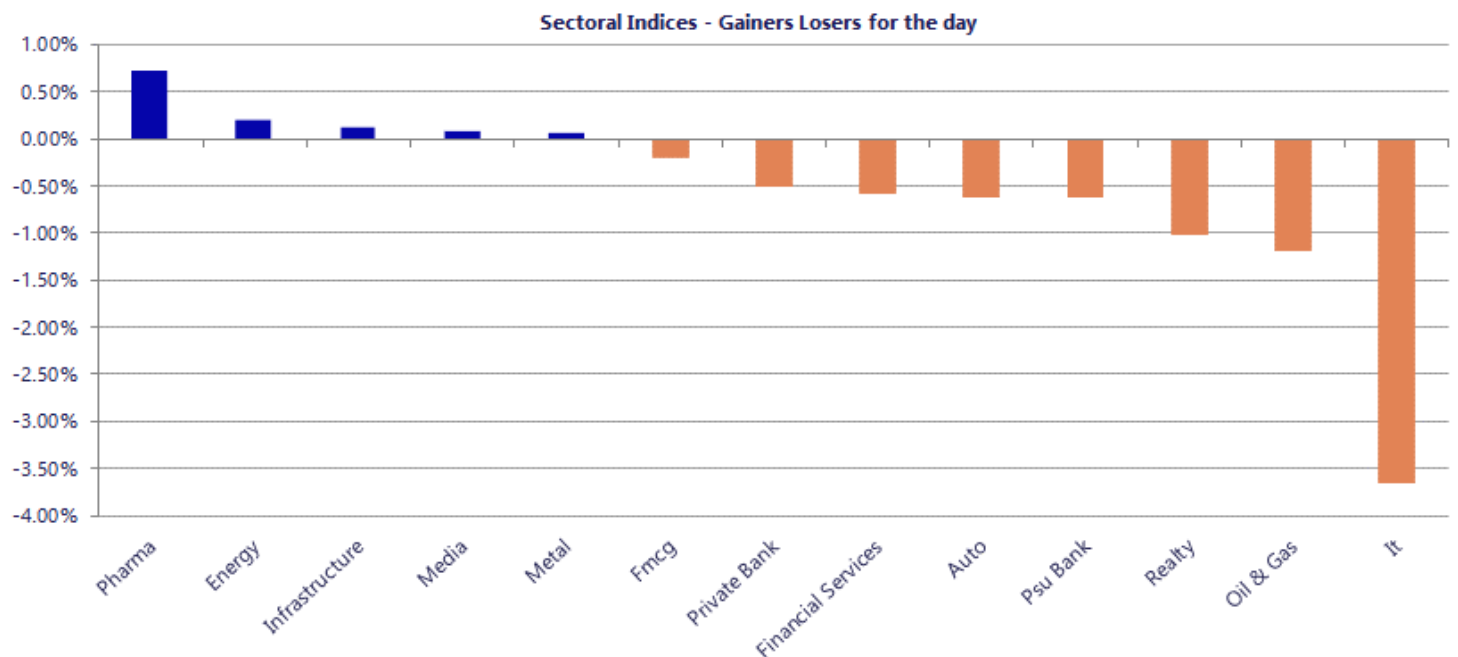


Breakouts - Cross above 200 DMA			
Company Name	LCP	Change %	200 DMA
Ravindra Energy	170.75	15.75	147.52
Nacl Industries	193.8	10.38	175.57
Berger Paints	550.7	8.91	505.67
Bhadora Industr	84.2	8.84	77.36
AksharChem	248.37	8.02	229.92
Aadhar Housing	515.1	5.72	487.22
Transformers	357.55	5.12	340.12
TCPL Packaging	3029.4	3.92	2915.2
SRG Housing Fin	290.8	3.85	280.02
Speciality Rest	118.41	3.54	114.36
NR Agarwal	462.6	3.25	448.06
Sreeleathers	214.96	2.12	210.49
Ndr Auto Compon	855.35	2.03	838.36
DCX Systems	204.32	1.95	200.41
Orient Abrasive	41.06	1.94	40.28
IRM Energy	279.85	1.79	274.92
Shah Alloys	69.22	1.60	68.13
Kataria Industr	103.35	1.49	101.83

Breakdown - Cross below 200 DMA			
Company Name	LCP	Change %	200 DMA
Latteys Industr	21.58	-3.92	22.46
Gujarat Gas	388.45	-2.62	398.9
OneSource Spec	1608.6	-2.37	1647.66
Yash Optics & L	120	-2.34	122.87
United Spirits	1320.5	-2.09	1348.63
Konstelec	48.65	-1.88	49.58
ACE Integrated	20.91	-1.04	21.13
Akash Infracroj	26.4	-0.98	26.66
Par Drugs	94.6	-0.96	95.52
Nitiraj Enginee	194.77	-0.93	196.59
Flysbs Aviation	492.9	-0.89	497.33
Quest Lab	102.8	-0.84	103.67
AB Money	144.4	-0.83	145.61
Deepak Nitrite	1644.4	-0.77	1657.21
Shiva Mills Lim	61.2	-0.76	61.67
K.P. Energy	351.55	-0.75	354.19
HUDCO	208.65	-0.72	210.16
Prestige Estate	1497.3	-0.68	1507.6

* Stocks crossing above its Simple Moving Average (200DMA)

* Stocks crossing below its Simple Moving Average (200DMA)



Nifty 50 Stocks - Summary Details											
Symbol	LTP	Chng	% Chng	Volume (lacs)	Turnover (crs.)	52w High	Diff with 52w H	52w Low	Diff with 52w L	365 days % chng	30 days % chng
NIFTY 50	24013.10	-154.90	-0.64%	4478.15	40188	26373	8.95%	22183	8.25%	1.67%	-3.15%
ADANIEN	3030.00	16.60	0.55%	36.20	1099	3060	0.97%	1753	72.85%	11.19%	28.93%
ADANIPTS	1836.80	-5.30	-0.29%	43.83	805	1858	1.13%	1291	42.33%	4.20%	37.28%
APOLLOHOSP	8486.00	74.50	0.89%	3.34	283	8624	1.60%	6697	26.72%	5.73%	21.06%
ASIANPAINT	2736.00	-19.00	-0.69%	8.39	229	2986	8.36%	2115	29.36%	5.20%	20.63%
AXISBANK	1360.10	-	#VALUE!	46.40	629	1418	4.10%	1043	30.47%	9.84%	11.71%
BAJAJ-AUTO	10080.00	3.00	0.03%	7.39	742	10834	6.96%	7859	28.27%	-1.22%	18.64%
BAJAJFINSV	1768.30	-3.40	-0.19%	8.37	148	2195	19.44%	1597	10.73%	1.06%	-10.13%
BAJFINANCE	965.00	6.15	0.64%	129.42	1246	1103	12.47%	788	22.48%	4.49%	7.16%
BEL	427.00	-1.60	-0.37%	108.28	463	473	9.81%	361	18.22%	0.96%	7.14%
BHARTIARTL	1906.90	32.10	1.71%	159.18	3034	2175	12.31%	1741	9.56%	-0.34%	1.59%
CIPLA	1353.00	-2.50	-0.18%	14.77	200	1673	19.13%	1166	16.07%	-4.03%	-8.83%
COALINDIA	452.05	0.05	0.01%	61.28	276	491	7.98%	369	22.62%	-1.07%	17.64%
DRREDDY	1267.10	-0.40	-0.03%	13.13	167	1380	8.16%	1148	10.34%	-5.10%	-4.45%
EICHERMOT	7649.00	48.00	0.63%	6.83	519	8230	7.06%	5220	46.55%	11.14%	39.24%
ETERNAL	263.85	5.30	2.05%	290.58	760	368	28.39%	213	24.11%	6.73%	5.79%
GRASIM	3158.00	12.90	0.41%	5.34	168	3200	1.31%	2503	26.19%	7.59%	17.26%
HCLTECH	1135.90	-25.90	-2.23%	100.14	1120	1780	36.19%	1090	4.26%	-3.69%	-33.72%
HDFCBANK	781.00	-5.00	-0.64%	337.98	2639	1021	23.47%	727	7.48%	2.43%	-19.29%
HDFCLIFE	593.80	4.60	0.78%	26.78	158	821	27.65%	543	9.36%	-2.72%	-22.06%
HINDALCO	1014.20	5.70	0.57%	60.13	606	1176	13.76%	635	59.72%	-3.25%	58.14%
HINDUNILVR	2202.00	-16.50	-0.74%	15.09	331	2750	19.93%	2023	8.88%	-1.38%	-4.02%
ICICIBANK	1347.80	5.50	0.41%	90.57	1219	1500	10.15%	1188	13.49%	8.62%	-4.50%
INDIGO	5022.00	10.20	0.20%	10.71	535	6233	19.42%	3895	28.93%	18.71%	-4.72%
INFY	1054.20	-73.30	-6.50%	456.64	4766	1728	38.99%	1030	2.35%	-11.92%	-34.86%
ITC	293.90	2.75	0.94%	138.73	404	427	31.20%	275	6.85%	-5.29%	-29.35%
JIOFIN	244.56	0.46	0.19%	221.54	542	339	27.77%	223	9.52%	4.84%	-13.92%
JSWSTEEL	1295.00	1.10	0.09%	11.39	147	1328	2.48%	981	31.96%	0.76%	30.01%
KOTAKBANK	399.50	-3.45	-0.86%	175.04	700	453	11.85%	346	15.63%	4.59%	-6.94%
LT	4210.00	20.00	0.48%	13.98	586	4440	5.18%	3288	28.04%	7.37%	16.26%
M&M	3079.70	-56.80	-1.81%	34.09	1051	3840	19.80%	2896	6.34%	-0.41%	-0.49%
MARUTI	13422.00	-62.00	-0.46%	7.20	965	17370	22.73%	12176	10.23%	3.60%	4.81%
MAXHEALTH	1097.00	6.55	0.60%	20.57	224	1314	16.53%	903	21.48%	2.64%	-5.67%
NESTLEIND	1417.50	17.10	1.22%	18.33	258	1498	5.38%	1085	30.68%	-0.97%	22.26%
NTPC	365.75	3.80	1.05%	174.65	639	414	11.74%	316	15.91%	-6.07%	10.82%
ONGC	246.45	1.15	0.47%	76.08	186	308	19.85%	229	7.80%	-16.88%	-2.03%
POWERGRID	292.60	3.90	1.35%	102.95	300	325	9.96%	250	17.04%	-2.01%	2.15%
RELIANCE	1311.50	-16.60	-1.25%	248.83	3279	1612	18.63%	1253	4.65%	-0.85%	-8.50%
SBILIFE	1804.90	-2.70	-0.15%	3.53	64	2132	15.34%	1700	6.15%	-4.07%	0.87%
SBIN	1036.00	-6.70	-0.64%	90.99	941	1235	16.09%	782	32.53%	9.19%	31.96%
SHRIRAMFIN	1001.00	-1.70	-0.17%	26.12	262	1108	9.66%	567	76.70%	7.94%	53.48%
SUNPHARMA	1840.40	15.60	0.85%	21.27	390	1917	3.98%	1548	18.89%	-2.23%	11.70%
TATACONSUM	1113.00	1.60	0.14%	13.09	145	1283	13.23%	1007	10.50%	-8.08%	2.27%
TATASTEEL	199.28	-1.24	-0.62%	315.71	626	224	11.19%	150	33.03%	-4.78%	31.97%
TCS	2135.90	-67.40	-3.06%	132.82	2775	3538	39.63%	2060	3.69%	-8.22%	-37.62%
TECHM	1414.00	-33.70	-2.33%	58.64	811	1854	23.73%	1304	8.43%	-3.62%	-16.03%
TITAN	4411.00	23.10	0.53%	9.41	415	4605	4.21%	3303	33.54%	7.53%	25.83%
TMPV	359.40	-2.25	-0.62%	119.26	428	740	51.41%	294	22.12%	-0.50%	-46.54%
TRENT	3203.60	23.90	0.75%	24.56	783	4174	23.25%	2184	46.71%	18.08%	-16.04%
ULTRACEMCO	11375.00	-55.00	-0.48%	4.04	459	13110	13.23%	10325	10.17%	0.06%	-0.39%
WIPRO	180.50	-2.34	-1.28%	374.59	667	273	33.91%	175	3.21%	-7.52%	-32.04%

Disclaimer / Disclosures

ANALYST CERTIFICATION

I, Mrs. Vaishali Parekh B.com, Research Analyst, author and the name subscribed to this report, hereby certify that all of the views expressed in this research report accurately reflect our views about the subject issuer(s) or securities. We also certify that no part of our compensation was, is, or will be directly or indirectly related to the specific recommendation(s) or view(s) in this report.

Terms & conditions and other disclosures:

Prabhudas Lilladher Pvt. Ltd, Mumbai, India (hereinafter referred to as "PL") is engaged in the business of Stock Broking, Portfolio Manager, Depository Participant and distribution for third party financial products. PL is a subsidiary of Prabhudas Lilladher Advisory Services Pvt Ltd. which has its various subsidiaries engaged in business of commodity broking, investment banking, financial services (margin funding) and distribution of third party financial/other products, details in respect of which are available at www.plindia.com

This document has been prepared by the Research Division of PL and is meant for use by the recipient only as information and is not for circulation. This document is not to be reported or copied or made available to others without prior permission of PL. It should not be considered or taken as an offer to sell or a solicitation to buy or sell any security.

The information contained in this report has been obtained from sources that are considered to be reliable. However, PL has not independently verified the accuracy or completeness of the same. Neither PL nor any of its affiliates, its directors or its employees accepts any responsibility of whatsoever nature for the information, statements and opinion given, made available or expressed herein or for any omission therein.

Recipients of this report should be aware that past performance is not necessarily a guide to future performance and value of investments can go down as well. The suitability or otherwise of any investments will depend upon the recipient's particular circumstances and, in case of doubt, advice should be sought from an independent expert/advisor.

Either PL or its affiliates or its directors or its employees or its representatives or its clients or their relatives may have position(s), make market, act as principal or engage in transactions of securities of companies referred to in this report and they may have used the research material prior to publication.

PL may from time to time solicit or perform investment banking or other services for any company mentioned in this document.

PL is registered as Research Analyst under Securities and Exchange Board of India (Research Analysts) Regulations, 2014 PL submits that no material disciplinary action has been taken on us by any Regulatory Authority impacting Equity Research Analysis activities.

PL or its research analysts or its associates or his relatives do not have any financial interest in the subject company.

PL or its research analysts or its associates or his relatives do not have actual/beneficial ownership of one per cent or more securities of the subject company at the end of the month immediately preceding the date of publication of the research report.

PL or its research analysts or its associates or his relatives do not have any material conflict of interest at the time of publication of the research report.

PL or its associates might have received compensation from the subject company in the past twelve months.

PL or its associates might have managed or co-managed public offering of securities for the subject company in the past twelve months or mandated by the subject company for any other assignment in the past twelve months.

PL or its associates might have received any compensation for investment banking or merchant banking or brokerage services from the subject company in the past twelve months.

PL or its associates might have received any compensation for products or services other than investment banking or merchant banking or brokerage services from the subject company in the past twelve months PL or its associates might have received any compensation or other benefits from the subject company or third party in connection with the research report.

PL encourages independence in research report preparation and strives to minimize conflict in preparation of research report. PL or its analysts did not receive any compensation or other benefits from the subject Company or third party in connection with the preparation of the research report. PL or its Research Analysts do not have any material conflict of interest at the time of publication of this report.

It is confirmed that Mrs. Vaishali Parekh B.com, Research Analyst of this report has not received any compensation from the companies mentioned in the report in the preceding twelve months compensation of our Research Analysts is not based on any specific merchant banking, investment banking or brokerage service transactions.

The Research analysts for this report certifies that all of the views expressed in this report accurately reflect his or her personal views about the subject company or companies and its or their securities, and no part of his or her compensation was, is or will be, directly or indirectly related to specific recommendations or views expressed in this report.

The research analysts for this report has not served as an officer, director or employee of the subject company PL or its research analysts have not engaged in market making activity for the subject company

Our sales people, traders, and other professionals or affiliates may provide oral or written market commentary or trading strategies to our clients that reflect opinions that are contrary to the opinions expressed herein, and our proprietary trading and investing businesses may make investment decisions that are inconsistent with the recommendations expressed herein. In reviewing these materials, you should be aware that any or all of the foregoing, among other things, may give rise to real or potential conflicts of interest.

PL and its associates, their directors and employees may (a) from time to time, have a long or short position in, and buy or sell the securities of the subject company or (b) be engaged in any other transaction involving such securities and earn brokerage or other compensation or act as a market maker in the financial instruments of the subject company or act as an advisor or lender/borrower to the subject company or may have any other potential conflict of interests with respect to any recommendation and other related information and opinions.

Regd. Office: 3rd Floor, Sadhana House, 570, P. B. Marg, Behind Mahindra Tower, Worli, Mumbai - 400 018, India.