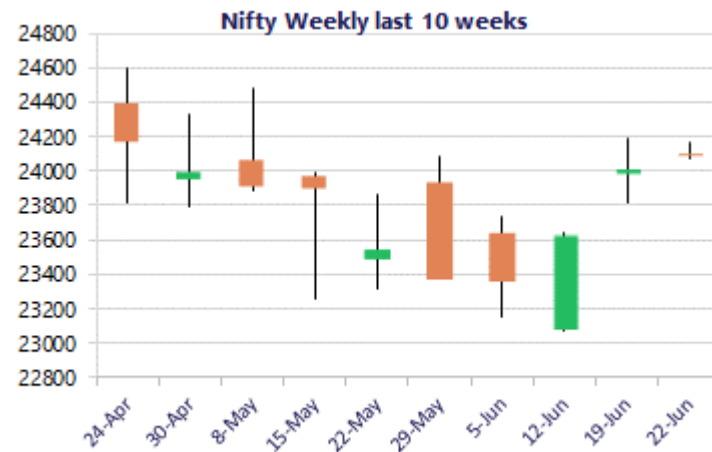
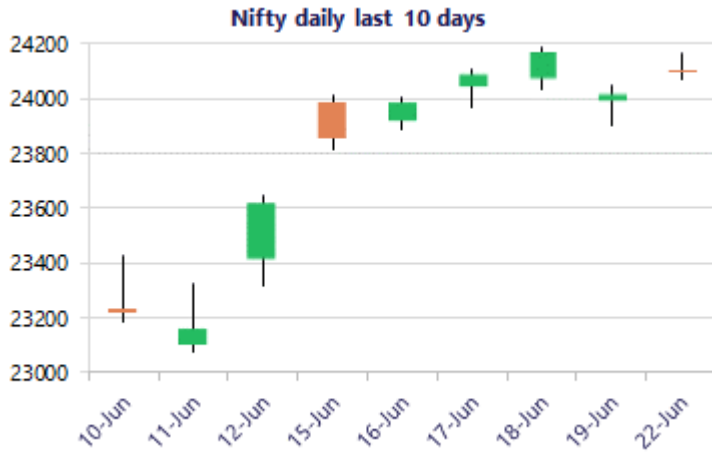


* Sensex 77094.07 + 291.17

* Nifty 24102.90 + 89.80

* Bank Nifty 57935.60 + 249.85



*Blue candle → Close rate > Open rate * Red candle → Close rate < Open rate

Market Preview

Nifty sustains above the 24000 zone

Nifty has sustained the positive bias maintaining above the 24000 zone and would expect for further rise in the coming sessions having the crucial hurdle near the 24350 zone. BankNifty witnessed a narrow rangebound session with a gradual rise closing near the 58000 zone with bias maintained positive and expect for further rise. The market breadth was positive with the advance decline indicating a ratio of 2:1 at close.

Market Forecast

Nifty daily range 23900 - 24300

Nifty opened on a positive note near the 24100 zone and remained rangebound for rest part of the trading session with bias and sentiment maintained with a cautiously positive approach expecting for further rise but having the tough resistance hurdle near the 24300 -24400 zone, as mentioned earlier, which needs to be breached above decisively to establish further conviction and clarity. The support zone would be positioned near the 50EMA at 23800 level which needs to be sustained as of now to maintain the overall bias intact.

BankNifty witnessed a sluggish session overall to close in the green with a marginal gain near the 58000 zone with bias maintained positive and can anticipate for further upward move in the coming days. As said earlier, the important 200 period MA at 57000 level shall remain the near-term support which needs to be sustained and, on the upside, can anticipate the index to achieve further targets of 59200 and 60500 levels in the coming days.

The support for the day is seen at 23900 levels, while the resistance is seen at 24300 levels. BankNifty would have the daily range of 57200-58700 levels.

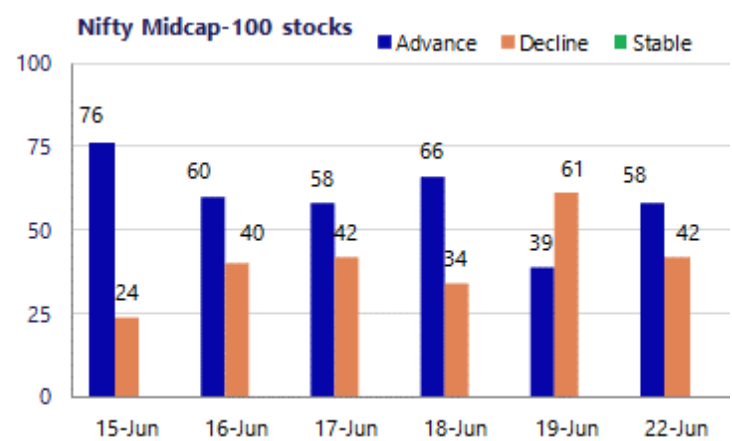
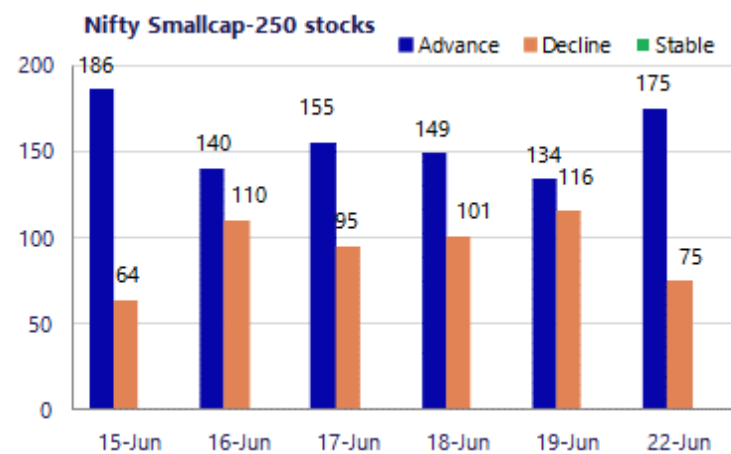
Sensex	Period	Closing	% Chng	Trend	Reversal	2 Sup	1 Sup	Pivot	1 Res	2 Res
Nifty	Daily	24102.90	0.37%	7	24054.55	24020	24061	24115	24156	24210
	Weekly	24013.10	1.65%	2	23546.40	23635	23824	24007	24196	24378
	Monthly	23547.75	-1.87%	-5	25345.55	22545	23046	23764	24266	24984
Bank Nifty	Daily	57935.60	0.43%	10	57854.60	57599	57767	57888	58056	58177
	Weekly	57685.75	1.53%	2	54948.70	56649	57168	57594	58113	58539
	Monthly	54239.20	-1.14%	-3	60590.40	50902	52570	54452	56121	58003
Sensex	Daily	77094.07	0.38%	7	77007.90	76825	76960	77143	77277	77460
	Weekly	76802.90	1.69%	2	74604.65	75460	76131	76812	77483	78164
	Monthly	74775.74	-2.78%	-5	81359.20	71515	73145	75765	77395	80015

Gainers - Losers (Nifty 500 Stocks)
Gainers

Company Name	Last Price	% Gain	Volume
Kirloskar Oil	2389.8	20.00%	1794366
Triveni Turbine	737.30	9.67%	5384171
Poly Medicure	1671.4	6.91%	321765
Aegis Logistics	1,069.70	6.14%	5487989
IDBI Bank	87.65	5.63%	83820771
Urban Company	136.98	5.25%	21074051
Mankind Pharma	2,538.30	5.14%	983998

Losers

Company Name	Last Price	% Loss	Volume
Aadhar Housing	495.30	-3.84%	451980
Anthem Bioscienc	766.15	-3.15%	565407
Piramal Finance	2,085.50	-3.14%	514901
Varun Beverages	512.95	-3.13%	11556735
Five-Star Busin	503.45	-3.08%	1396223
SUMITOMO	438.9	-3.05%	1029271
Tata Capital	355.85	-2.99%	5709147



Nifty Daily chart with RSI indicator



BankNifty Daily chart with RSI indicator

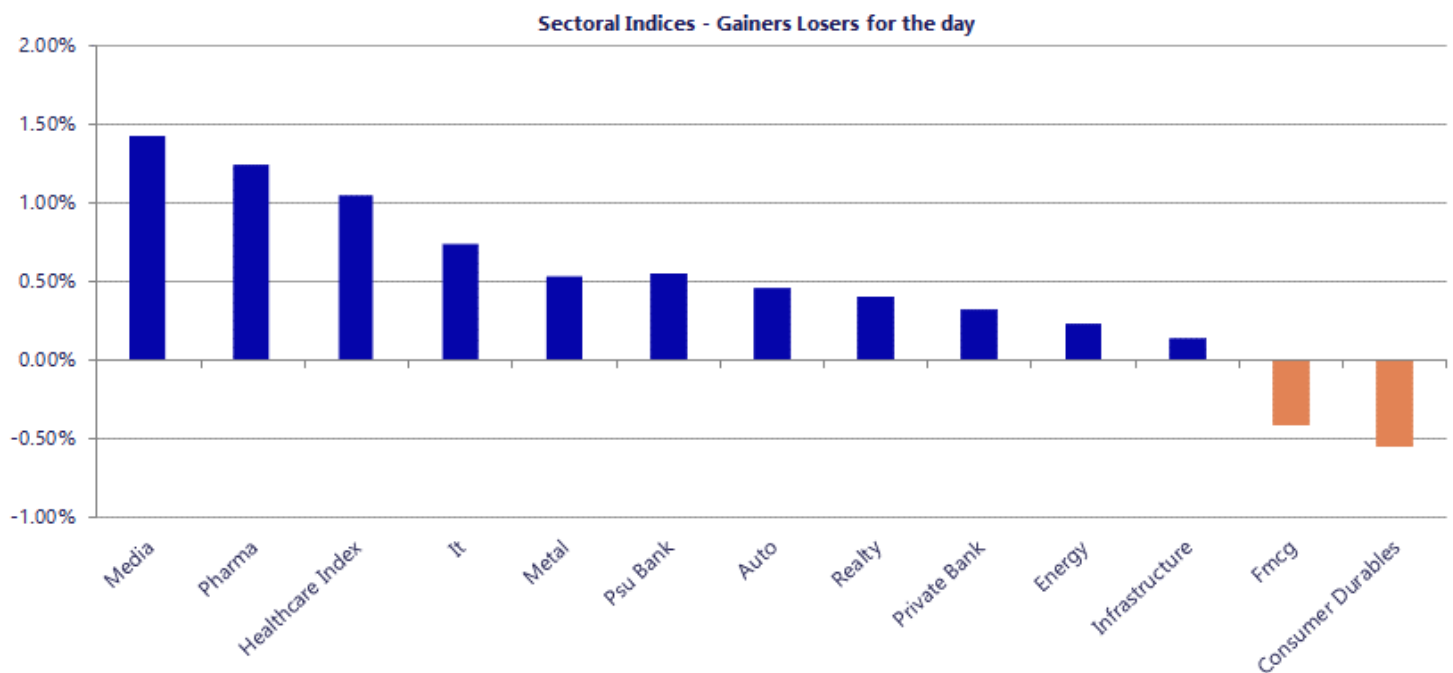


Breakouts - Cross above 200 DMA			
Company Name	LCP	Change %	200 DMA
NOCIL	190.82	16.59	163.67
Igarashi Motors	473.7	13.28	418.15
HEC Infra Proje	139.44	9.69	127.12
TPL Plastech	72.07	6.74	67.52
SSFLPP	129.8	5.81	122.67
Eimco Elecon	1771.8	5.01	1687.33
HPL Electric &	401.95	4.74	383.77
Viviana Power	851.65	4.29	816.63
Shiva Mills Lim	63.8	3.57	61.6
Everest Kanto	126.19	3.53	121.89
REC	369.85	3.50	357.33
Capacite Infra	262.41	3.46	253.64
DIC India	538.9	3.45	520.91
SRM Contractors	516.1	3.34	499.4
5paisa Capita	337.8	3.22	327.26
Felix Industrie	190.05	3.10	184.34
SPML Infra	209.29	3.08	203.04
Jayshree Tea	91.17	2.92	88.58

Breakdown - Cross below 200 DMA			
Company Name	LCP	Change %	200 DMA
InfoBeans Tech	157.91	-5.26	166.67
Wise Travel	123.6	-4.90	129.97
Niraj Cement	32.47	-3.99	33.82
Vishnusurya Pro	161.05	-2.92	165.89
Vaswani Ind	55.77	-2.30	57.08
Poddar Pigments	250.95	-2.11	256.37
Waaree Energies	3061.3	-1.78	3116.73
Biofil Chem	35.33	-0.90	35.65
KM Sugar Mills	26.87	-0.67	27.05
Rossari	550.7	-0.59	553.97
Ameya Precision	103.9	-0.30	104.21
AFL	479	-0.25	480.21
Orient Abrasive	40.24	-0.17	40.31
Kataria Industr	101.85	-0.02	101.87

* Stocks crossing above its Simple Moving Average (200DMA)

* Stocks crossing below its Simple Moving Average (200DMA)



Nifty 50 Stocks - Summary Details											
Symbol	LTP	Chng	% Chng	Volume (lacs)	Turnover (crs.)	52w High	Diff with 52w H	52w Low	Diff with 52w L	365 days % chng	30 days % chng
NIFTY 50	24102.90	89.80	0.37%	2528.21	21764	26373	8.61%	22183	8.66%	1.62%	-4.02%
ADANIEN	3060.00	21.60	0.71%	17.26	524	3065	0.16%	1753	74.56%	12.61%	28.73%
ADANIPTS	1828.00	-7.30	-0.40%	15.24	278	1858	1.60%	1291	41.65%	2.30%	35.48%
APOLLOHOSP	8469.00	-20.50	-0.24%	2.09	177	8624	1.80%	6697	26.47%	1.27%	19.90%
ASIANPAINT	2672.90	-60.00	-2.20%	10.33	278	2986	10.48%	2115	26.38%	1.25%	16.94%
AXISBANK	1357.50	-0.40	-0.03%	31.53	429	1418	4.29%	1043	30.22%	5.61%	11.21%
BAJAJ-AUTO	10214.00	148.00	1.47%	8.34	849	10834	5.72%	7859	29.97%	-3.18%	22.02%
BAJAJFINSV	1783.00	13.60	0.77%	18.28	324	2195	18.77%	1597	11.65%	0.96%	-10.23%
BAJFINANCE	967.60	5.80	0.60%	56.81	549	1103	12.24%	788	22.81%	5.57%	6.92%
BEL	431.05	4.15	0.97%	97.55	419	473	8.96%	361	19.34%	3.48%	5.58%
BHARTIARTL	1916.00	5.20	0.27%	37.98	728	2175	11.89%	1741	10.08%	2.38%	-1.07%
CIPLA	1417.00	65.20	4.82%	33.69	473	1673	15.30%	1166	21.56%	1.27%	-5.51%
COALINDIA	449.00	-2.30	-0.51%	37.39	168	491	8.60%	369	21.80%	-1.65%	15.41%
DRREDDY	1292.00	19.90	1.56%	16.18	209	1380	6.36%	1148	12.50%	-1.16%	-2.51%
EICHERMOT	7630.00	19.00	0.25%	3.76	288	8230	7.29%	5220	46.18%	9.29%	38.10%
ETERNAL	263.00	-1.30	-0.49%	187.98	498	368	28.62%	213	23.71%	8.70%	3.82%
GRASIM	3178.40	28.90	0.92%	3.69	117	3200	0.67%	2503	27.01%	0.73%	17.17%
HCLTECH	1128.70	-3.00	-0.27%	23.12	263	1780	36.59%	1090	3.60%	-3.03%	-35.13%
HDFCBANK	785.60	5.80	0.74%	251.95	1982	1021	23.02%	727	8.11%	2.45%	-20.03%
HDFCLIFE	598.00	6.15	1.04%	29.16	174	821	27.14%	543	10.13%	-3.02%	-23.23%
HINDALCO	1015.90	5.90	0.58%	42.45	429	1176	13.61%	635	59.98%	-8.41%	56.50%
HINDUNILVR	2186.50	-8.10	-0.37%	7.66	168	2750	20.49%	2023	8.11%	-0.78%	-5.19%
ICICIBANK	1351.00	4.50	0.33%	48.15	653	1500	9.93%	1188	13.76%	6.86%	-5.33%
INDIGO	5018.40	-3.10	-0.06%	8.57	431	6233	19.48%	3895	28.84%	13.06%	-6.89%
INFY	1065.00	13.60	1.29%	101.79	1087	1728	38.37%	1030	3.40%	-9.32%	-34.38%
ITC	290.75	-1.75	-0.60%	99.48	290	427	31.94%	275	5.71%	-3.63%	-30.53%
JIOFIN	243.50	-0.95	-0.39%	80.96	198	339	28.09%	223	9.05%	2.23%	-17.25%
JSWSTEEL	1278.60	-9.10	-0.71%	9.61	123	1328	3.72%	981	30.29%	-0.54%	27.15%
KOTAKBANK	401.20	1.95	0.49%	71.59	287	453	11.47%	346	16.12%	4.44%	-7.55%
LT	4198.30	-11.10	-0.26%	11.69	492	4440	5.44%	3288	27.68%	6.92%	14.65%
M&M	3059.00	-15.80	-0.51%	21.87	673	3840	20.34%	2896	5.63%	-0.72%	-3.94%
MARUTI	13410.00	15.00	0.11%	2.55	342	17370	22.80%	12176	10.13%	3.26%	4.84%
MAXHEALTH	1093.00	-1.75	-0.16%	13.86	151	1314	16.84%	903	21.04%	6.82%	-9.95%
NESTLEIND	1400.00	-14.80	-1.05%	14.81	209	1498	6.55%	1085	29.07%	-1.62%	18.62%
NTPC	366.30	0.50	0.14%	119.47	438	414	11.61%	316	16.08%	-5.75%	9.28%
ONGC	245.60	-0.65	-0.26%	73.34	180	308	20.13%	229	7.43%	-15.31%	-2.50%
POWERGRID	290.10	-2.15	-0.74%	116.78	339	325	10.72%	250	16.04%	-1.43%	-1.02%
RELIANCE	1324.70	15.20	1.16%	129.31	1724	1612	17.81%	1253	5.71%	-2.20%	-9.65%
SBILIFE	1802.80	2.60	0.14%	5.50	99	2132	15.44%	1700	6.02%	-3.63%	-0.45%
SBIN	1041.00	5.90	0.57%	62.09	645	1235	15.69%	782	33.17%	9.67%	30.75%
SHRIRAMFIN	992.00	-9.90	-0.99%	42.87	426	1108	10.47%	567	75.11%	5.42%	48.87%
SUNPHARMA	1864.00	25.70	1.40%	15.89	295	1917	2.74%	1548	20.41%	1.05%	11.95%
TATACONSUM	1112.70	1.20	0.11%	8.89	99	1283	13.25%	1007	10.47%	-6.64%	1.14%
TATASTEEL	198.80	-0.16	-0.08%	192.39	384	224	11.41%	150	32.71%	-4.97%	30.82%
TCS	2129.50	4.50	0.21%	45.66	975	3538	39.81%	2060	3.38%	-8.10%	-38.02%
TECHM	1440.00	30.40	2.16%	21.65	310	1854	22.33%	1304	10.42%	1.25%	-15.10%
TITAN	4367.00	-52.90	-1.20%	3.91	171	4605	5.17%	3303	32.21%	7.04%	24.10%
TMPV	361.10	1.60	0.45%	154.48	565	740	51.18%	294	22.70%	-0.62%	-46.60%
TRENT	3176.00	-29.80	-0.93%	12.65	405	4174	23.91%	2184	45.44%	10.88%	-19.22%
ULTRACEMCO	11401.00	34.00	0.30%	2.27	258	13110	13.04%	10325	10.42%	-1.45%	-0.50%
WIPRO	180.18	-0.62	-0.34%	103.68	188	273	34.02%	175	3.02%	-11.29%	-32.40%

Disclaimer / Disclosures

ANALYST CERTIFICATION

I, Mrs. Vaishali Parekh B.com, Research Analyst, author and the name subscribed to this report, hereby certify that all of the views expressed in this research report accurately reflect our views about the subject issuer(s) or securities. We also certify that no part of our compensation was, is, or will be directly or indirectly related to the specific recommendation(s) or view(s) in this report.

Terms & conditions and other disclosures:

Prabhudas Lilladher Pvt. Ltd, Mumbai, India (hereinafter referred to as "PL") is engaged in the business of Stock Broking, Portfolio Manager, Depository Participant and distribution for third party financial products. PL is a subsidiary of Prabhudas Lilladher Advisory Services Pvt Ltd. which has its various subsidiaries engaged in business of commodity broking, investment banking, financial services (margin funding) and distribution of third party financial/other products, details in respect of which are available at www.plindia.com

This document has been prepared by the Research Division of PL and is meant for use by the recipient only as information and is not for circulation. This document is not to be reported or copied or made available to others without prior permission of PL. It should not be considered or taken as an offer to sell or a solicitation to buy or sell any security.

The information contained in this report has been obtained from sources that are considered to be reliable. However, PL has not independently verified the accuracy or completeness of the same. Neither PL nor any of its affiliates, its directors or its employees accepts any responsibility of whatsoever nature for the information, statements and opinion given, made available or expressed herein or for any omission therein.

Recipients of this report should be aware that past performance is not necessarily a guide to future performance and value of investments can go down as well. The suitability or otherwise of any investments will depend upon the recipient's particular circumstances and, in case of doubt, advice should be sought from an independent expert/advisor.

Either PL or its affiliates or its directors or its employees or its representatives or its clients or their relatives may have position(s), make market, act as principal or engage in transactions of securities of companies referred to in this report and they may have used the research material prior to publication.

PL may from time to time solicit or perform investment banking or other services for any company mentioned in this document.

PL is registered as Research Analyst under Securities and Exchange Board of India (Research Analysts) Regulations, 2014 PL submits that no material disciplinary action has been taken on us by any Regulatory Authority impacting Equity Research Analysis activities.

PL or its research analysts or its associates or his relatives do not have any financial interest in the subject company.

PL or its research analysts or its associates or his relatives do not have actual/beneficial ownership of one per cent or more securities of the subject company at the end of the month immediately preceding the date of publication of the research report.

PL or its research analysts or its associates or his relatives do not have any material conflict of interest at the time of publication of the research report.

PL or its associates might have received compensation from the subject company in the past twelve months.

PL or its associates might have managed or co-managed public offering of securities for the subject company in the past twelve months or mandated by the subject company for any other assignment in the past twelve months.

PL or its associates might have received any compensation for investment banking or merchant banking or brokerage services from the subject company in the past twelve months.

PL or its associates might have received any compensation for products or services other than investment banking or merchant banking or brokerage services from the subject company in the past twelve months PL or its associates might have received any compensation or other benefits from the subject company or third party in connection with the research report.

PL encourages independence in research report preparation and strives to minimize conflict in preparation of research report. PL or its analysts did not receive any compensation or other benefits from the subject Company or third party in connection with the preparation of the research report. PL or its Research Analysts do not have any material conflict of interest at the time of publication of this report.

It is confirmed that Mrs. Vaishali Parekh B.com, Research Analyst of this report has not received any compensation from the companies mentioned in the report in the preceding twelve months compensation of our Research Analysts is not based on any specific merchant banking, investment banking or brokerage service transactions.

The Research analysts for this report certifies that all of the views expressed in this report accurately reflect his or her personal views about the subject company or companies and its or their securities, and no part of his or her compensation was, is or will be, directly or indirectly related to specific recommendations or views expressed in this report.

The research analysts for this report has not served as an officer, director or employee of the subject company PL or its research analysts have not engaged in market making activity for the subject company

Our sales people, traders, and other professionals or affiliates may provide oral or written market commentary or trading strategies to our clients that reflect opinions that are contrary to the opinions expressed herein, and our proprietary trading and investing businesses may make investment decisions that are inconsistent with the recommendations expressed herein. In reviewing these materials, you should be aware that any or all of the foregoing, among other things, may give rise to real or potential conflicts of interest.

PL and its associates, their directors and employees may (a) from time to time, have a long or short position in, and buy or sell the securities of the subject company or (b) be engaged in any other transaction involving such securities and earn brokerage or other compensation or act as a market maker in the financial instruments of the subject company or act as an advisor or lender/borrower to the subject company or may have any other potential conflict of interests with respect to any recommendation and other related information and opinions.

Regd. Office: 3rd Floor, Sadhana House, 570, P. B. Marg, Behind Mahindra Tower, Worli, Mumbai - 400 018, India.