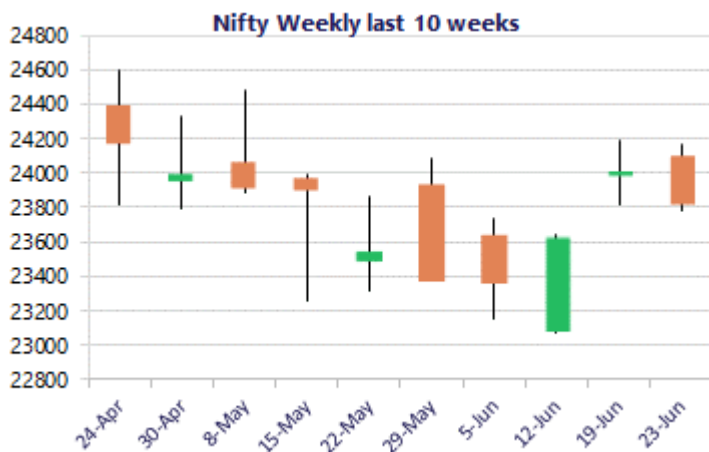
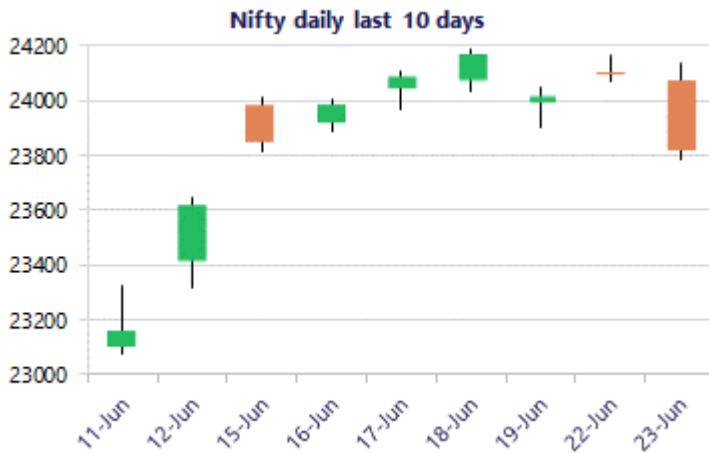


\* Sensex 76200.68 - 893.39

\* Nifty 23824.10 - 278.80

\* Bank Nifty 57183.75 - 751.85



\*Blue candle → Close rate > Open rate \* Red candle → Close rate < Open rate

## Market Preview

### Nifty near crucial 23800 support zone

Nifty tanked heavily from the 24200 zone with profit booking seen and ended near the important 50EMA at 23800 zone with bias weakening. BankNifty after resisting near the 58000 level, shed heavily the gains witnessed in the last few sessions and closed near the important 200 period MA at 57000 zone. The market breadth was weak with the advance decline indicating a ratio of 2:5 at close.

## Market Forecast

### Nifty daily range 23600 - 24000

Nifty finding resistance near the 24150-24200 zone witnessed heavy selling pressure in the second half of the session to close near the important 50EMA zone at 23800 level with a big red candle on the daily chart weakening the bias to some extent. The index would need to sustain the important 23800 zone failing which the downside targets of 23500 and 23200 levels can be anticipated in the coming days whereas on the upside, the tough resistance hurdle near the 24300 zone, it still remains to be conquered.

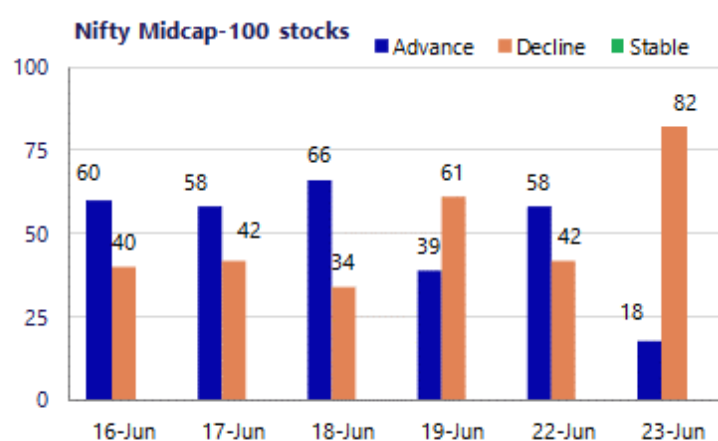
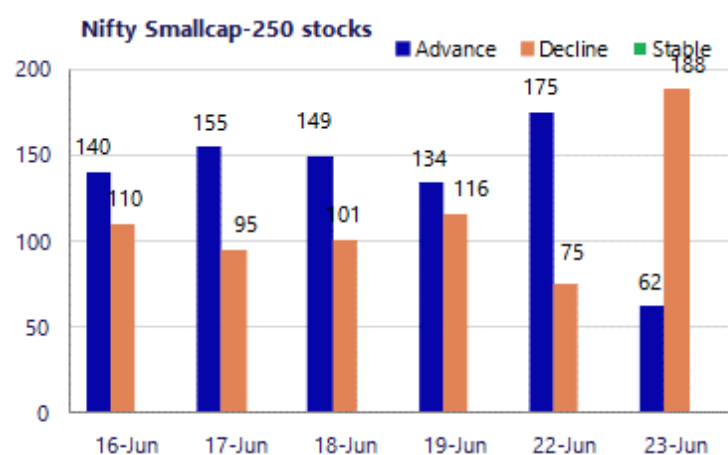
BankNifty after finding resistance near the 58000 zone in the last few sessions, indicated a huge bearish candle with profit booking seen to weaken the bias closing near the important 200 period MA at 57100 level and can anticipate for further slide with the frontline banking stocks shedding their gains expecting for further profit booking in the coming sessions. The index would have the important support positioned near the 50EMA zone at 55700 level which needs to be sustained as of now.

The support for the day is seen at 23600 levels, while the resistance is seen at 24000 levels. BankNifty would have the daily range of 56400-58000 levels.

Sensex	Period	Closing	% Chng	Trend	Reversal	2 Sup	1 Sup	Pivot	1 Res	2 Res
Nifty	Daily	23824.10	-1.16%	-1	24131.15	23564	23694	23915	24045	24265
	Weekly	24013.10	1.65%	2	23546.40	23635	23824	24007	24196	24378
	Monthly	23547.75	-1.87%	-5	25345.55	22545	23046	23764	24266	24984
Bank Nifty	Daily	57183.75	-1.30%	-1	58396.30	56519	56851	57411	57744	58303
	Weekly	57685.75	1.53%	2	54948.70	56649	57168	57594	58113	58539
	Monthly	54239.20	-1.14%	-3	60590.40	50902	52570	54452	56121	58003
Sensex	Daily	76200.68	-1.16%	-1	77309.90	75380	75791	76493	76903	77605
	Weekly	76802.90	1.69%	2	74604.65	75460	76131	76812	77483	78164
	Monthly	74775.74	-2.78%	-5	81359.20	71515	73145	75765	77395	80015

**Gainers - Losers ( Nifty 500 Stocks )**

Gainers				Losers			
Company Name	Last Price	% Gain	Volume	Company Name	Last Price	% Loss	Volume
Cohance Life	457.8	12.97%	405.95	Aegis Vopak	232.76	-5.49%	249.12
Gland	2,298.20	5.10%	2193.3	Ashok Leyland	151.46	-3.65%	157.1
Ather Energy	1006.75	4.80%	960.6	Angel One	342.10	-3.58%	354.8
Apar Ind	16,654.00	2.98%	16380	Adani Enterpris	2,962.90	-3.16%	3072
Aurobindo Pharm	1,534.20	2.84%	1492.2	Ambuja Cements	414.85	-3.07%	428.95
CarTrade Tech	2,636.80	2.55%	2578	Aster DM Health	765.85	-3.04%	792.4
Bharat Forge	2,152.30	2.31%	2115	Adani Energy	1493.7	-2.97%	1547.2



### Nifty Daily chart with RSI indicator



### BankNifty Daily chart with RSI indicator



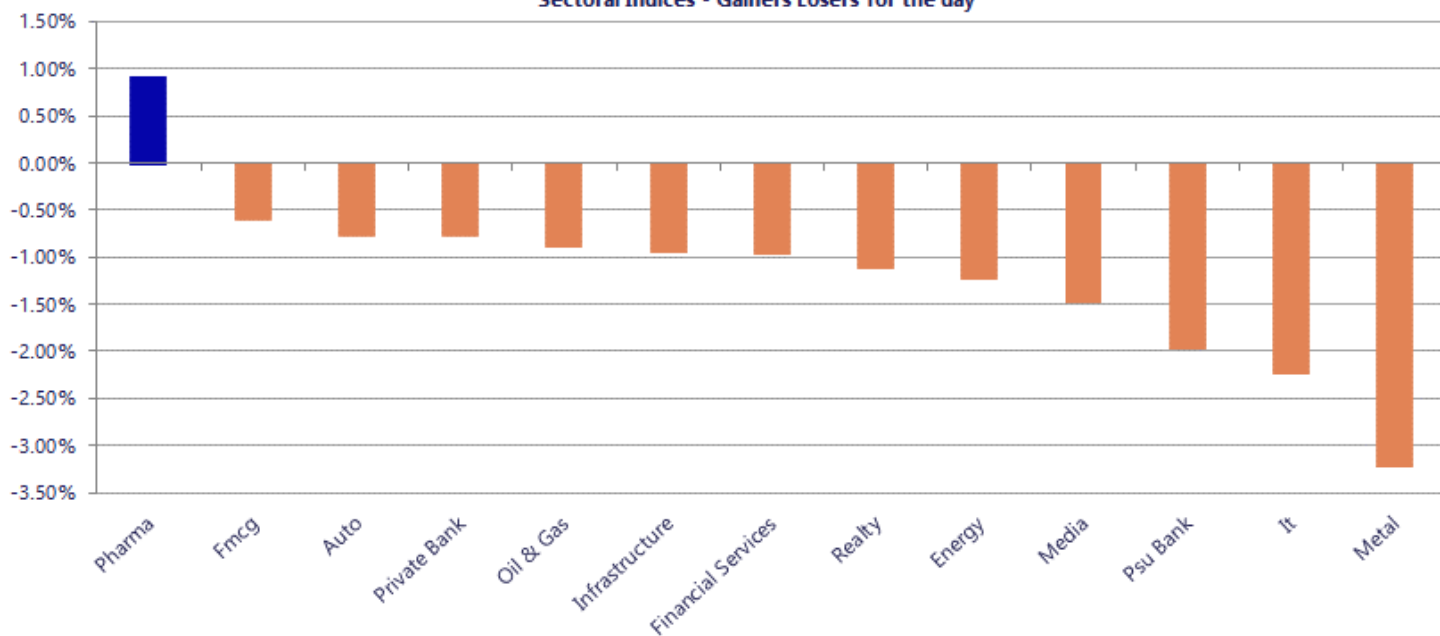
Breakouts - Cross above 200 DMA			
Company Name	LCP	Change %	200 DMA
20 Microns	206.41	8.57	190.12
Sterling Tools	275.09	5.40	260.99
Rupa and Comp	170.56	4.43	163.33
D P Wires	203.73	4.38	195.18
Aakaar Medical	74.3	3.57	71.74
Chemcon Special	204.73	3.56	197.69
Holmarc Opto Me	106	3.42	102.49
Biofil Chem	36.41	2.13	35.65
Garuda Const	190.1	1.71	186.9
Akash Infracproj	27.03	1.39	26.66
JITF Infraclogis	317.35	1.14	313.76
Cipla	1433.1	0.76	1422.29
Wealth First Po	1001.75	0.52	996.57
Zota Health Car	1376.4	0.36	1371.44
Flysbs Aviation	497.1	0.35	495.36
Embassy Office	428.99	0.32	427.63
Avanti Feeds	986.5	0.14	985.09
Pricol	575.55	0.13	574.78

\* Stocks crossing above its Simple Moving Average (200DMA)

Breakdown - Cross below 200 DMA			
Company Name	LCP	Change %	200 DMA
Bazaar Style Re	310.1	-3.40	321.01
Ajax Eng	549.8	-3.12	567.53
Jindal Steel	1082.6	-2.83	1114.09
VLS Finance	241.19	-2.60	247.62
Shree Karni Fab	462.2	-2.46	473.84
Lambodhara Text	113.63	-2.43	116.46
S J Logistics	336.35	-2.36	344.48
INDUS TOWERS	400	-2.15	408.79
Indo Rama Synth	45.12	-2.15	46.11
Linc	109.88	-1.88	111.98
Master Compo.	341	-1.69	346.87
Rashtriya Chem	134.19	-1.67	136.47
Venkys	1426.8	-1.66	1450.88
Hind Zinc	546.8	-1.55	555.4
Home First	1124.3	-1.26	1138.67
Waaree Renewabl	983.25	-1.22	995.36
Ndr Auto Compon	827.3	-1.13	836.75
SGBDE30III	14681.01	-1.10	14844.86

\* Stocks crossing below its Simple Moving Average (200DMA)

Sectoral Indices - Gainers Losers for the day



Nifty 50 Stocks - Summary Details											
Symbol	LTP	Chng	% Chng	Volume (lacs)	Turnover (crs.)	52w High	Diff with 52w H	52w Low	Diff with 52w L	365 days % chng	30 days % chng
NIFTY 50	23824.10	-278.80	-1.16%	3400.29	28990	26373	9.67%	22183	7.40%	0.44%	-4.60%
ADANIENT	2964.60	-95.00	-3.10%	16.21	488	3092	4.11%	1753	69.12%	9.10%	23.53%
ADANIPTS	1786.00	-41.20	-2.25%	33.10	596	1858	3.86%	1291	38.40%	-0.05%	31.83%
APOLLOHOSP	8457.00	-12.00	-0.14%	2.49	212	8624	1.94%	6697	26.29%	1.13%	20.68%
ASIANPAINT	2662.00	11.00	0.41%	11.82	315	2986	10.84%	2115	25.86%	0.84%	17.57%
AXISBANK	1358.00	-0.60	-0.04%	57.05	779	1418	4.25%	1043	30.26%	5.65%	11.85%
BAJAJ-AUTO	9950.00	-241.00	-2.36%	5.51	557	10834	8.16%	7859	26.61%	-5.68%	20.07%
BAJAJFINSV	1761.50	-20.70	-1.16%	8.86	158	2195	19.75%	1597	10.30%	-0.25%	-11.82%
BAJFINANCE	962.10	-6.20	-0.64%	82.02	793	1103	12.73%	788	22.11%	4.97%	5.09%
BEL	420.20	-11.30	-2.62%	155.63	664	473	11.25%	361	16.33%	0.88%	-0.17%
BHARTIARTL	1899.00	-17.60	-0.92%	51.56	985	2175	12.67%	1741	9.11%	1.47%	-1.93%
CIPLA	1435.00	19.30	1.36%	49.58	717	1673	14.23%	1166	23.10%	2.56%	-4.28%
COALINDIA	444.65	-4.35	-0.97%	35.12	157	491	9.49%	369	20.62%	-2.61%	13.29%
DRREDDY	1300.90	10.20	0.79%	28.79	377	1376	5.45%	1148	13.28%	-0.48%	-1.29%
EICHERMOT	7560.00	-79.50	-1.04%	3.66	279	8230	8.14%	5353	41.23%	8.29%	36.15%
ETERNAL	258.90	-4.75	-1.80%	166.44	436	368	29.73%	213	21.78%	7.01%	1.67%
GRASIM	3126.10	-49.10	-1.55%	7.06	222	3200	2.31%	2503	24.92%	-0.93%	14.77%
HCLTECH	1108.00	-22.50	-1.99%	32.35	360	1780	37.76%	1090	1.70%	-4.81%	-34.95%
HDFCBANK	772.60	-13.80	-1.75%	282.88	2212	1021	24.29%	727	6.32%	0.76%	-20.69%
HDFCLIFE	594.30	-2.85	-0.48%	33.01	198	821	27.59%	543	9.45%	-3.62%	-23.23%
HINDALCO	986.50	-27.70	-2.73%	71.91	710	1176	16.11%	640	54.10%	-11.06%	49.15%
HINDUNILVR	2160.00	-2.90	-0.13%	7.10	154	2750	21.45%	2023	6.80%	-1.98%	-5.06%
ICICIBANK	1335.50	-16.90	-1.25%	118.85	1608	1500	10.97%	1188	12.45%	5.63%	-5.96%
INDIGO	4964.30	-56.80	-1.13%	5.84	292	6233	20.35%	3895	27.45%	11.84%	-9.20%
INFY	1029.00	-36.40	-3.42%	193.20	1999	1728	40.45%	1026	0.29%	-12.39%	-35.04%
ITC	290.10	-1.15	-0.39%	94.10	274	427	32.06%	275	5.47%	-3.84%	-29.91%
JIOFIN	237.40	-5.98	-2.46%	111.77	269	339	29.89%	223	6.31%	-0.33%	-19.02%
JSWSTEEL	1242.70	-39.70	-3.10%	21.56	269	1328	6.42%	984	26.35%	-3.33%	24.64%
KOTAKBANK	401.65	-0.50	-0.12%	100.78	405	453	11.37%	346	16.25%	4.56%	-8.05%
LT	4169.80	-31.50	-0.75%	21.98	924	4440	6.09%	3288	26.81%	6.19%	16.35%
M&M	3042.00	-21.40	-0.70%	28.28	864	3840	20.78%	2896	5.04%	-1.28%	-2.97%
MARUTI	13430.00	9.00	0.07%	3.99	533	17370	22.68%	12201	10.07%	3.41%	5.76%
MAXHEALTH	1077.80	-17.25	-1.58%	27.68	302	1314	17.99%	903	19.36%	5.33%	-9.44%
NESTLEIND	1393.90	-8.00	-0.57%	16.46	230	1498	6.96%	1085	28.51%	-2.05%	18.17%
NTPC	363.90	-3.15	-0.86%	116.96	427	414	12.19%	316	15.32%	-6.37%	9.41%
ONGC	244.20	-1.25	-0.51%	74.00	181	308	20.59%	229	6.82%	-15.79%	-2.86%
POWERGRID	292.50	2.75	0.95%	123.28	359	325	9.99%	250	17.00%	-0.61%	0.78%
RELIANCE	1306.00	-20.50	-1.55%	153.99	2030	1612	18.97%	1253	4.21%	-3.58%	-10.35%
SBILIFE	1794.90	-10.60	-0.59%	9.61	172	2132	15.81%	1700	5.56%	-4.05%	-1.30%
SBIN	1023.60	-17.15	-1.65%	104.11	1073	1235	17.10%	787	30.14%	7.84%	29.54%
SHRIRAMFIN	994.50	1.65	0.17%	29.04	290	1108	10.24%	567	75.55%	5.69%	50.31%
SUNPHARMA	1867.00	4.10	0.22%	28.12	529	1917	2.59%	1548	20.61%	1.21%	12.30%
TATACONSUM	1105.00	-7.90	-0.71%	14.16	157	1283	13.85%	1007	9.71%	-7.28%	-0.40%
TATASTEEL	193.10	-5.87	-2.95%	346.33	673	224	13.95%	150	28.32%	-7.69%	26.68%
TCS	2060.00	-67.80	-3.19%	63.92	1325	3490	40.97%	2055	0.24%	-11.10%	-39.30%
TECHM	1416.00	-19.20	-1.34%	24.03	340	1854	23.62%	1304	8.58%	-0.44%	-15.80%
TITAN	4302.00	-70.50	-1.61%	5.87	255	4605	6.58%	3303	30.24%	5.45%	22.71%
TMPV	354.45	-7.05	-1.95%	162.56	578	740	52.08%	294	20.44%	-2.45%	-47.20%
TRENT	3139.00	-41.60	-1.31%	14.91	474	4174	24.80%	2184	43.75%	9.59%	-23.06%
ULTRACEMCO	11325.00	-77.00	-0.68%	3.25	367	13110	13.62%	10325	9.69%	-2.11%	-1.08%
WIPRO	174.39	-5.79	-3.21%	239.49	422	273	36.14%	174	0.22%	-14.14%	-33.75%

## Disclaimer / Disclosures

### ANALYST CERTIFICATION

I, Mrs. Vaishali Parekh B.com, Research Analyst, author and the name subscribed to this report, hereby certify that all of the views expressed in this research report accurately reflect our views about the subject issuer(s) or securities. We also certify that no part of our compensation was, is, or will be directly or indirectly related to the specific recommendation(s) or view(s) in this report.

Terms & conditions and other disclosures:

Prabhudas Lilladher Pvt. Ltd, Mumbai, India (hereinafter referred to as "PL") is engaged in the business of Stock Broking, Portfolio Manager, Depository Participant and distribution for third party financial products. PL is a subsidiary of Prabhudas Lilladher Advisory Services Pvt Ltd. which has its various subsidiaries engaged in business of commodity broking, investment banking, financial services (margin funding) and distribution of third party financial/other products, details in respect of which are available at [www.plindia.com](http://www.plindia.com)

This document has been prepared by the Research Division of PL and is meant for use by the recipient only as information and is not for circulation. This document is not to be reported or copied or made available to others without prior permission of PL. It should not be considered or taken as an offer to sell or a solicitation to buy or sell any security.

The information contained in this report has been obtained from sources that are considered to be reliable. However, PL has not independently verified the accuracy or completeness of the same. Neither PL nor any of its affiliates, its directors or its employees accepts any responsibility of whatsoever nature for the information, statements and opinion given, made available or expressed herein or for any omission therein.

Recipients of this report should be aware that past performance is not necessarily a guide to future performance and value of investments can go down as well. The suitability or otherwise of any investments will depend upon the recipient's particular circumstances and, in case of doubt, advice should be sought from an independent expert/advisor.

Either PL or its affiliates or its directors or its employees or its representatives or its clients or their relatives may have position(s), make market, act as principal or engage in transactions of securities of companies referred to in this report and they may have used the research material prior to publication.

PL may from time to time solicit or perform investment banking or other services for any company mentioned in this document.

PL is registered as Research Analyst under Securities and Exchange Board of India (Research Analysts) Regulations, 2014 PL submits that no material disciplinary action has been taken on us by any Regulatory Authority impacting Equity Research Analysis activities.

PL or its research analysts or its associates or his relatives do not have any financial interest in the subject company.

PL or its research analysts or its associates or his relatives do not have actual/beneficial ownership of one per cent or more securities of the subject company at the end of the month immediately preceding the date of publication of the research report.

PL or its research analysts or its associates or his relatives do not have any material conflict of interest at the time of publication of the research report.

PL or its associates might have received compensation from the subject company in the past twelve months.

PL or its associates might have managed or co-managed public offering of securities for the subject company in the past twelve months or mandated by the subject company for any other assignment in the past twelve months.

PL or its associates might have received any compensation for investment banking or merchant banking or brokerage services from the subject company in the past twelve months.

PL or its associates might have received any compensation for products or services other than investment banking or merchant banking or brokerage services from the subject company in the past twelve months PL or its associates might have received any compensation or other benefits from the subject company or third party in connection with the research report.

PL encourages independence in research report preparation and strives to minimize conflict in preparation of research report. PL or its analysts did not receive any compensation or other benefits from the subject Company or third party in connection with the preparation of the research report. PL or its Research Analysts do not have any material conflict of interest at the time of publication of this report.

It is confirmed that Mrs. Vaishali Parekh B.com, Research Analyst of this report has not received any compensation from the companies mentioned in the report in the preceding twelve months compensation of our Research Analysts is not based on any specific merchant banking, investment banking or brokerage service transactions.

The Research analysts for this report certifies that all of the views expressed in this report accurately reflect his or her personal views about the subject company or companies and its or their securities, and no part of his or her compensation was, is or will be, directly or indirectly related to specific recommendations or views expressed in this report.

The research analysts for this report has not served as an officer, director or employee of the subject company PL or its research analysts have not engaged in market making activity for the subject company

Our sales people, traders, and other professionals or affiliates may provide oral or written market commentary or trading strategies to our clients that reflect opinions that are contrary to the opinions expressed herein, and our proprietary trading and investing businesses may make investment decisions that are inconsistent with the recommendations expressed herein. In reviewing these materials, you should be aware that any or all of the foregoing, among other things, may give rise to real or potential conflicts of interest.

PL and its associates, their directors and employees may (a) from time to time, have a long or short position in, and buy or sell the securities of the subject company or (b) be engaged in any other transaction involving such securities and earn brokerage or other compensation or act as a market maker in the financial instruments of the subject company or act as an advisor or lender/borrower to the subject company or may have any other potential conflict of interests with respect to any recommendation and other related information and opinions.

**Regd. Office:** 3<sup>rd</sup> Floor, Sadhana House, 570, P. B. Marg, Behind Mahindra Tower, Worli, Mumbai - 400 018, India.