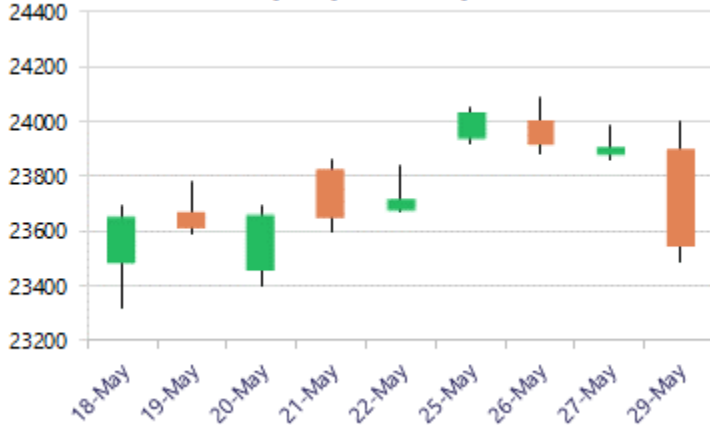


\* Sensex 74775.74 -1092.06

\* Nifty 23547.75 -359.40

\* Bank Nifty 54239.20 -614.65

**Nifty daily last 10 days**



**Nifty tanks: 23500 zone is crucial support.**

Nifty dropped sharply in last hour of the session due to MSCI rebalancing, with a bearish candle formation on the daily chart, closing just near the important support zone of the 23500 level, while the bias remained cautious. Bank Nifty fell further and formed a bearish candle, weakening the overall market sentiment. Market breadth was weak, with an advance-decline ratio of 2:3 at closing.

**Market Forecast**

**Nifty daily range 23300 - 23800**

Nifty witnessed a session of profit booking towards the 23500 zone, with bias and sentiment getting into a nervous situation with the next major and crucial support positioned near the 23350 zone. With anxious movement creeping in, the index is precariously placed with strong support maintained near the 23100-23200 levels, which needs to be sustained as of now, failing which there can be further intensified selling pressure.

BankNifty slipped further during the session, with profit booking seen among the major banking stocks during the session to end near the low at the 54200 level, weakening the bias and sentiment. The index would have the important near-term support at the 53300 zone, which needs to be sustained to maintain the overall bias intact, failing which shall trigger a further slide, having the next major support near the 52750 level.

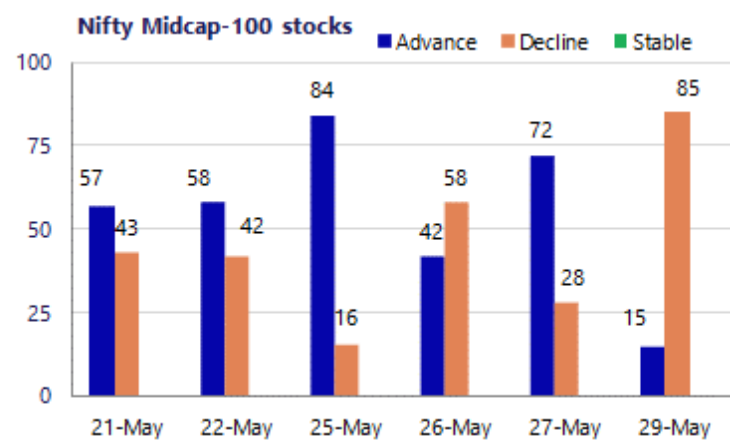
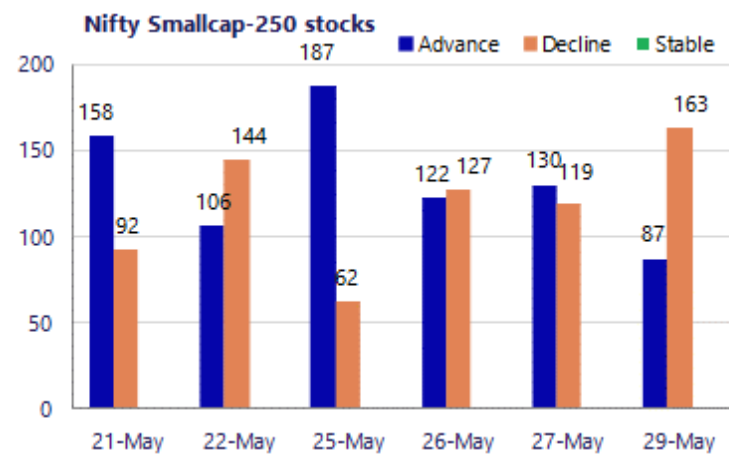
The support for the day is seen at 23300 levels, while the resistance is seen at 23800 levels. BankNifty would have the daily range of 53500-55000 levels.

\*Blue candle → Close rate > Open rate \* Red candle → Close rate < Open rate

Sensex	Period	Closing	% Chng	Trend	Reversal	2 Sup	1 Sup	Pivot	1 Res	2 Res
Nifty	Daily	23547.75	-1.50%	-1	23760.00	23160	23354	23678	23872	24196
	Weekly	23547.75	-0.72%	-1	23765.95	23102	23325	23707	23930	24312
	Monthly	23547.75	-1.87%	-5	25345.55	22545	23046	23764	24266	24984
Bank Nifty	Daily	54239.20	-1.12%	5	54332.15	53445	53842	54513	54910	55582
	Weekly	54239.20	0.34%	-3	54624.70	53210	53725	54631	55145	56051
	Monthly	54239.20	-1.14%	-3	60590.40	50902	52570	54452	56121	58003
Sensex	Daily	74775.74	-1.44%	-1	75380.00	73564	74170	75195	75801	76826
	Weekly	74775.74	-0.85%	-2	75674.50	73293	74034	75331	76072	77369
	Monthly	74775.74	-2.78%	-5	81359.20	71515	73145	75765	77395	80015

### Gainers - Losers ( Nifty 500 Stocks )

Gainers				Losers			
Company Name	Last Price	% Gain	Volume	Company Name	Last Price	% Loss	Volume
Aditya Infotech	2903.5	10.00%	2903.5	Bharat Dynamics	1,204.60	-6.05%	1207
Cemindia Proj	1,071.15	7.88%	1000	BEML	1722.4	-6.01%	1850
Afcons Infra	339.05	6.60%	314.85	Anupam Rasayan	1,293.90	-5.42%	1360.2
Clean Science	797.50	5.41%	757	Aarti Ind	475.00	-5.14%	500.75
Aegis Logistics	748.45	4.82%	720	Ashok Leyland	155.44	-5.00%	165.66
Capri Global	198.36	4.45%	190.15	Berger Paints	500.6	-5.00%	528
Acutaas Chem	3,132.50	4.40%	3009.9	Bank of India	139.91	-4.82%	142.48



### Nifty Daily chart with RSI indicator



### BankNifty Daily chart with RSI indicator



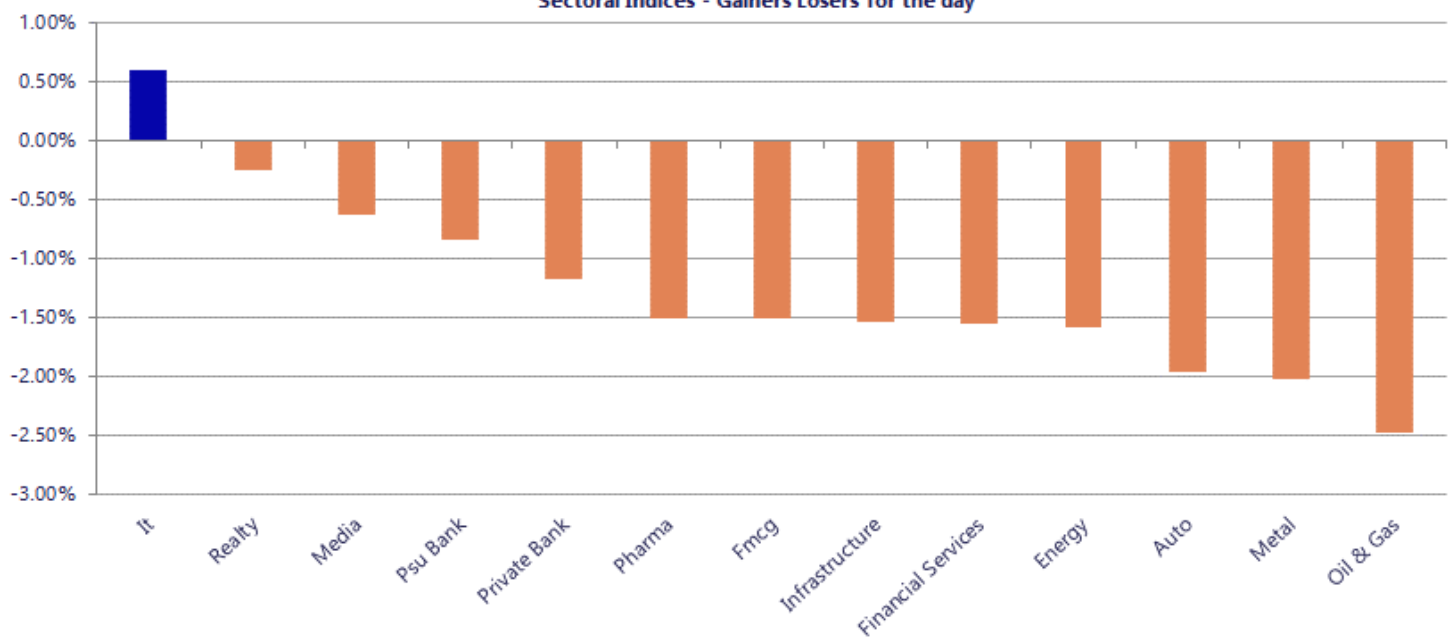
Breakouts - Cross above 200 DMA			
Company Name	LCP	Change %	200 DMA
Bluspring Ent	79.03	14.77	68.86
India Nippon	921.2	10.12	836.54
United Heat	68.25	8.66	62.81
Vinyas Innovati	1197.65	6.73	1122.18
Electrotherm	883.35	5.63	836.26
Aegis Logistics	748.45	4.10	719
Ola Electric	41.49	3.88	39.94
Guj Ind Power	165.17	2.85	160.59
Gufic Bio	333.85	2.35	326.18
Nitco	98.35	2.27	96.17
Soma Textile	106.84	1.89	104.86
Servotech Renew	97.51	1.82	95.77
Arrow Greentech	530.55	1.76	521.36
Polyplex Corp	926.1	1.74	910.29
Coffee Day	34.78	1.52	34.26
GPT Healthcare	142.4	1.43	140.39
Thaai Casting	105.55	1.43	104.06
BF Investment	431.15	1.29	425.66

\* Stocks crossing above its Simple Moving Average (200DMA)

Breakdown - Cross below 200 DMA			
Company Name	LCP	Change %	200 DMA
Hi-Tech Pipes	86.7	-7.03	93.26
Aries Agro	336.5	-6.54	360.04
Ruchira Papers	116.87	-6.42	124.89
Agarwal Toughen	118.2	-4.71	124.04
S Chand and Co	161.72	-4.62	169.56
Ramcoind	293.5	-4.61	307.7
DCX Systems	195.9	-4.60	205.35
Jubilant Ing.	646.2	-4.23	674.72
Ashok Leyland	155.44	-3.86	161.68
Kamdhenu	24.04	-3.76	24.98
Italian Edibles	33.25	-3.51	34.46
HEC Infra Proje	125.51	-3.27	129.75
PTC Industries	16191	-2.90	16673.86
Delta Corp	69.6	-2.77	71.58
Gravita India	1612.9	-2.70	1657.69
Hindustan Aeron	4303.8	-2.45	4411.77
Ishan Dyes	61.36	-2.32	62.82
Guj Raffia Ind	43.9	-2.31	44.94

\* Stocks crossing below its Simple Moving Average (200DMA)

Sectoral Indices - Gainers Losers for the day



Nifty 50 Stocks - Summary Details											
Symbol	LTP	Chng	% Chng	Volume (lacs)	Turnover (crs.)	52w High	Diff with 52w H	52w Low	Diff with 52w L	365 days % chng	30 days % chng
NIFTY 50	23547.75	-359.40	-1.50%	11980.23	1,01,438.37	26373	10.71%	22183	6.15%	-2.61%	-5.18%
ADANIENT	2940.00	-33.10	-1.11%	40.41	1190	3028	2.89%	1753	67.71%	21.19%	19.18%
ADANI PORTS	1809.00	-15.50	-0.85%	35.54	643	1843	1.83%	1291	40.18%	8.90%	25.75%
APOLLOHOSP	8219.50	-53.00	-0.64%	10.42	855	8443	2.65%	6697	22.74%	6.62%	18.73%
ASIANPAINT	2688.00	16.10	0.60%	50.62	1358	2986	9.97%	2115	27.09%	9.84%	17.16%
AXISBANK	1286.50	-17.60	-1.35%	152.16	1963	1418	9.29%	1043	23.41%	-0.76%	7.06%
BAJAJ-AUTO	10479.50	-179.00	-1.68%	4.83	510	10834	3.27%	7859	33.35%	9.81%	18.09%
BAJAJFINSV	1797.80	-11.30	-0.62%	14.46	259	2195	18.10%	1597	12.57%	1.90%	-10.60%
BAJFINANCE	909.30	-21.85	-2.35%	467.52	4258	1103	17.52%	788	15.41%	-2.23%	-1.21%
BEL	412.35	-6.75	-1.61%	265.60	1096	473	12.91%	361	14.16%	-5.76%	6.61%
BHARTIARTL	1827.00	-25.20	-1.36%	528.86	9670	2175	15.98%	1741	4.97%	-3.24%	-1.96%
CIPLA	1400.00	-18.20	-1.28%	95.41	1339	1673	16.32%	1166	20.10%	6.25%	-5.21%
COALINDIA	458.30	-4.75	-1.03%	978.95	4526	491	6.71%	369	24.32%	-4.50%	15.09%
DRREDDY	1320.00	1.00	0.08%	54.24	708	1380	4.33%	1148	14.94%	-0.74%	5.75%
EICHERMOT	7213.00	-206.00	-2.78%	14.65	1058	8230	12.36%	5220	38.19%	0.33%	34.10%
ETERNAL	251.99	-4.52	-1.76%	519.89	1314	368	31.61%	213	18.53%	-0.80%	10.34%
GRASIM	3142.70	-27.30	-0.86%	16.35	513	3198	1.71%	2503	25.58%	12.11%	22.11%
HCLTECH	1182.00	16.80	1.44%	124.47	1474	1780	33.60%	1103	7.12%	-1.52%	-29.00%
HDFCBANK	747.25	-11.40	-1.50%	1012.99	7575	1021	26.78%	727	2.83%	-4.08%	-22.46%
HDFCLIFE	596.50	-13.10	-2.15%	110.95	663	821	27.32%	555	7.46%	0.35%	-23.61%
HINDALCO	1132.20	-17.50	-1.52%	119.87	1360	1176	3.72%	618	83.20%	6.09%	74.18%
HINDUNILVR	2161.00	-37.40	-1.70%	177.02	3816	2750	21.42%	2023	6.85%	-6.63%	-8.69%
ICICIBANK	1260.50	-12.20	-0.96%	310.08	3918	1500	15.97%	1188	6.14%	-1.60%	-13.46%
INDIGO	4420.00	-150.00	-3.28%	13.59	603	6233	29.08%	3895	13.47%	1.72%	-16.95%
INFY	1156.40	-3.50	-0.30%	690.85	8079	1728	33.08%	1089	6.19%	-0.95%	-27.07%
ITC	287.90	-4.05	-1.39%	319.30	921	444	35.19%	286	0.70%	-8.96%	-31.25%
JIOFIN	240.12	-2.77	-1.14%	225.35	541	339	29.08%	223	7.53%	-4.22%	-16.58%
JSWSTEEL	1277.00	-32.30	-2.47%	31.30	402	1328	3.84%	962	32.72%	-0.21%	26.91%
KOTAKBANK	385.65	-3.05	-0.78%	401.10	1546	453	14.91%	346	11.62%	0.96%	-7.37%
LT	4090.00	42.50	1.05%	48.83	1998	4440	7.88%	3288	24.39%	-0.15%	11.89%
M&M	3066.10	-55.50	-1.78%	114.03	3492	3840	20.15%	2896	5.87%	-2.73%	1.90%
MARUTI	13200.00	-164.00	-1.23%	9.63	1270	17370	24.01%	12016	9.85%	-0.43%	6.52%
MAXHEALTH	965.00	-28.45	-2.86%	153.89	1489	1314	26.58%	903	6.87%	-4.13%	-14.99%
NESTLEIND	1443.00	15.50	1.09%	130.63	1858	1498	3.68%	1085	33.03%	-1.54%	18.52%
NTPC	389.50	-8.65	-2.17%	170.03	661	414	6.01%	316	23.44%	-2.94%	14.78%
ONGC	265.80	-8.25	-3.01%	744.03	1982	308	13.56%	229	16.27%	-11.81%	9.36%
POWERGRID	287.80	-12.35	-4.11%	774.07	2255	325	11.43%	250	15.12%	-10.16%	-1.81%
RELIANCE	1321.90	-28.60	-2.12%	426.34	5673	1612	17.99%	1290	2.47%	-7.26%	-6.76%
SBILIFE	1839.00	-25.50	-1.37%	20.95	384	2132	13.74%	1720	6.92%	1.26%	0.77%
SBIN	965.30	-2.50	-0.26%	222.93	2152	1235	21.82%	782	23.49%	-11.19%	21.06%
SHRIRAMFIN	955.00	-8.20	-0.85%	112.49	1068	1108	13.81%	567	68.58%	-0.19%	46.42%
SUNPHARMA	1803.50	-40.80	-2.21%	100.59	1815	1917	5.90%	1548	16.51%	1.39%	6.10%
TATA CONSUM	1173.40	-31.20	-2.59%	98.37	1163	1283	8.52%	1007	16.50%	0.46%	5.73%
TATASTEEL	210.19	-4.51	-2.10%	674.67	1413	224	6.33%	150	40.31%	-2.64%	28.86%
TCS	2256.00	-28.20	-1.23%	163.32	3710	3540	36.27%	2206	2.25%	-8.84%	-35.51%
TECHM	1480.00	24.40	1.68%	39.55	587	1854	20.17%	1304	13.49%	1.38%	-7.50%
TITAN	4112.10	-25.80	-0.62%	20.01	818	4605	10.70%	3303	24.49%	-7.38%	14.60%
TMPV	395.00	-5.95	-1.48%	312.10	1240	744	46.91%	294	34.22%	11.99%	-45.48%
TRENT	4235.00	-13.60	-0.32%	11.85	504	6261	32.36%	3276	29.29%	0.16%	-25.14%
ULTRACEMCO	11501.00	-188.00	-1.61%	17.77	2045	13110	12.27%	10325	11.39%	-2.81%	2.06%
WIPRO	204.10	2.52	1.25%	827.35	1704	273	25.27%	187	9.44%	1.70%	-18.41%

## Disclaimer / Disclosures

### ANALYST CERTIFICATION

I, Mrs. Vaishali Parekh B.com, Research Analyst, author and the name subscribed to this report, hereby certify that all of the views expressed in this research report accurately reflect our views about the subject issuer(s) or securities. We also certify that no part of our compensation was, is, or will be directly or indirectly related to the specific recommendation(s) or view(s) in this report.

Terms & conditions and other disclosures:

Prabhudas Lilladher Pvt. Ltd, Mumbai, India (hereinafter referred to as "PL") is engaged in the business of Stock Broking, Portfolio Manager, Depository Participant and distribution for third party financial products. PL is a subsidiary of Prabhudas Lilladher Advisory Services Pvt Ltd. which has its various subsidiaries engaged in business of commodity broking, investment banking, financial services (margin funding) and distribution of third party financial/other products, details in respect of which are available at [www.plindia.com](http://www.plindia.com)

This document has been prepared by the Research Division of PL and is meant for use by the recipient only as information and is not for circulation. This document is not to be reported or copied or made available to others without prior permission of PL. It should not be considered or taken as an offer to sell or a solicitation to buy or sell any security.

The information contained in this report has been obtained from sources that are considered to be reliable. However, PL has not independently verified the accuracy or completeness of the same. Neither PL nor any of its affiliates, its directors or its employees accepts any responsibility of whatsoever nature for the information, statements and opinion given, made available or expressed herein or for any omission therein.

Recipients of this report should be aware that past performance is not necessarily a guide to future performance and value of investments can go down as well. The suitability or otherwise of any investments will depend upon the recipient's particular circumstances and, in case of doubt, advice should be sought from an independent expert/advisor.

Either PL or its affiliates or its directors or its employees or its representatives or its clients or their relatives may have position(s), make market, act as principal or engage in transactions of securities of companies referred to in this report and they may have used the research material prior to publication.

PL may from time to time solicit or perform investment banking or other services for any company mentioned in this document.

PL is registered as Research Analyst under Securities and Exchange Board of India (Research Analysts) Regulations, 2014 PL submits that no material disciplinary action has been taken on us by any Regulatory Authority impacting Equity Research Analysis activities.

PL or its research analysts or its associates or his relatives do not have any financial interest in the subject company.

PL or its research analysts or its associates or his relatives do not have actual/beneficial ownership of one per cent or more securities of the subject company at the end of the month immediately preceding the date of publication of the research report.

PL or its research analysts or its associates or his relatives do not have any material conflict of interest at the time of publication of the research report.

PL or its associates might have received compensation from the subject company in the past twelve months.

PL or its associates might have managed or co-managed public offering of securities for the subject company in the past twelve months or mandated by the subject company for any other assignment in the past twelve months.

PL or its associates might have received any compensation for investment banking or merchant banking or brokerage services from the subject company in the past twelve months.

PL or its associates might have received any compensation for products or services other than investment banking or merchant banking or brokerage services from the subject company in the past twelve months PL or its associates might have received any compensation or other benefits from the subject company or third party in connection with the research report.

PL encourages independence in research report preparation and strives to minimize conflict in preparation of research report. PL or its analysts did not receive any compensation or other benefits from the subject Company or third party in connection with the preparation of the research report. PL or its Research Analysts do not have any material conflict of interest at the time of publication of this report.

It is confirmed that Mrs. Vaishali Parekh B.com, Research Analyst of this report has not received any compensation from the companies mentioned in the report in the preceding twelve months compensation of our Research Analysts is not based on any specific merchant banking, investment banking or brokerage service transactions.

The Research analysts for this report certifies that all of the views expressed in this report accurately reflect his or her personal views about the subject company or companies and its or their securities, and no part of his or her compensation was, is or will be, directly or indirectly related to specific recommendations or views expressed in this report.

The research analysts for this report has not served as an officer, director or employee of the subject company PL or its research analysts have not engaged in market making activity for the subject company

Our sales people, traders, and other professionals or affiliates may provide oral or written market commentary or trading strategies to our clients that reflect opinions that are contrary to the opinions expressed herein, and our proprietary trading and investing businesses may make investment decisions that are inconsistent with the recommendations expressed herein. In reviewing these materials, you should be aware that any or all of the foregoing, among other things, may give rise to real or potential conflicts of interest.

PL and its associates, their directors and employees may (a) from time to time, have a long or short position in, and buy or sell the securities of the subject company or (b) be engaged in any other transaction involving such securities and earn brokerage or other compensation or act as a market maker in the financial instruments of the subject company or act as an advisor or lender/borrower to the subject company or may have any other potential conflict of interests with respect to any recommendation and other related information and opinions.

**Regd. Office:** 3<sup>rd</sup> Floor, Sadhana House, 570, P. B. Marg, Behind Mahindra Tower, Worli, Mumbai - 400 018, India.