

* Sensex 76922.64 + 443.97

* Nifty 24005.85 + 140.10

* Bank Nifty 58033.05 + 490.15

Market Preview

Nifty in a tight rangebound zone

Nifty witnessed a gradual recovery closing near the 24000 zone with overall rangebound movement visible for quite some time. BankNifty witnessed a positive move during the session to close just above the 58000 zone with bias remaining intact and expecting for further rise. The market breadth was on the positive side with the advance decline indicating a ratio of 4:3 at close.

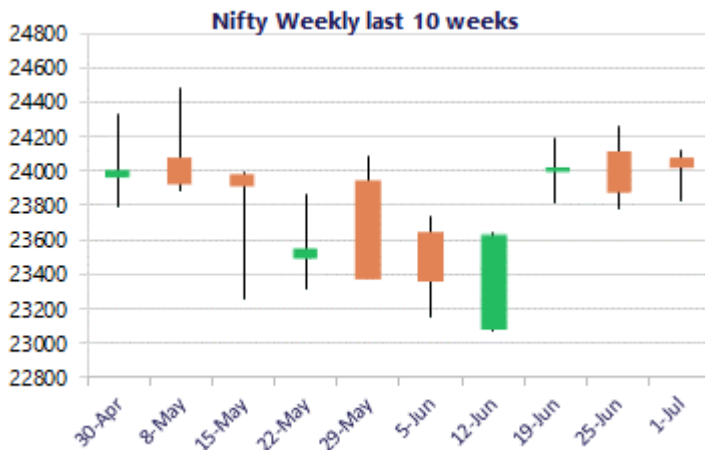
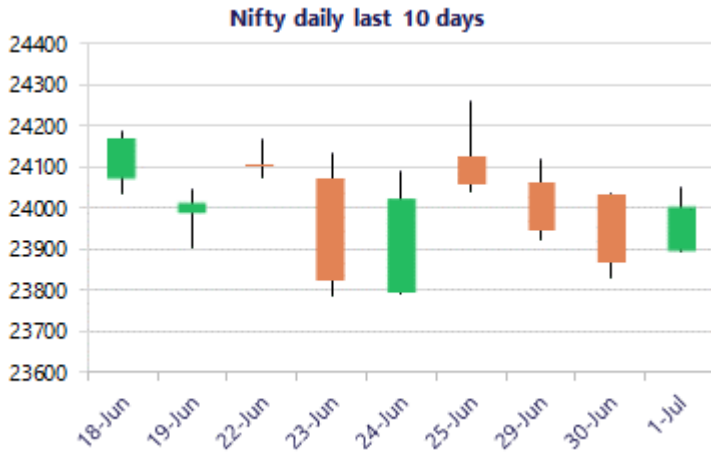
Market Forecast

Nifty daily range 23800 - 24200

Nifty once again picked up sustaining the important support near the 50EMA at 23800 level and has indicated a revival to close near the 24000 zone overall gripped within a tight range of 24200 and 23800 levels for quite some time. With the bias maintained with a cautiously positive approach, the index would need a decisive breach above the tough resistance hurdle near the 24350 zone, as mentioned earlier, whereas on the downside, the crucial near-term support of 23800 zone needs to be sustained to maintain the overall trend intact.

BankNifty witnessed a recovery from the 57500 zone to end near the 58000 zone with bias maintained positive sustaining above the important 200 period MA at 57200 zone maintained as the near-term support and has been overall moving within a narrow range for quite some time. The index with the flag pattern sustained on the daily chart, would need to breach above the 58500 zone to indicate a breakout and trigger for fresh upward move in the coming days.

The support for the day is seen at 23800 levels, while the resistance is seen at 24200 levels. BankNifty would have the daily range of 57500-58600 levels.



*Blue candle → Close rate > Open rate * Red candle → Close rate < Open rate

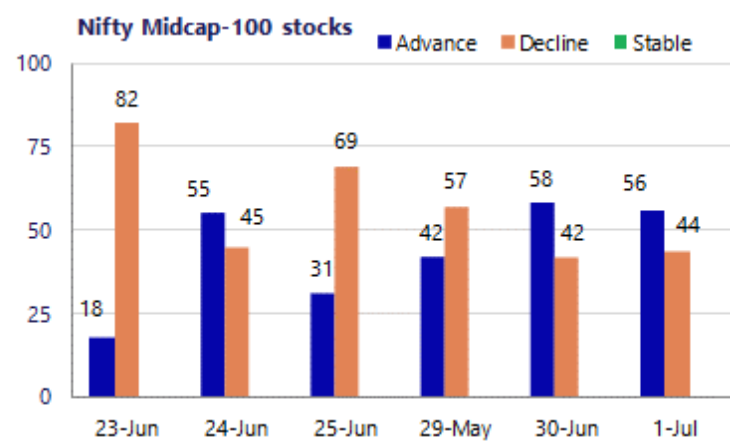
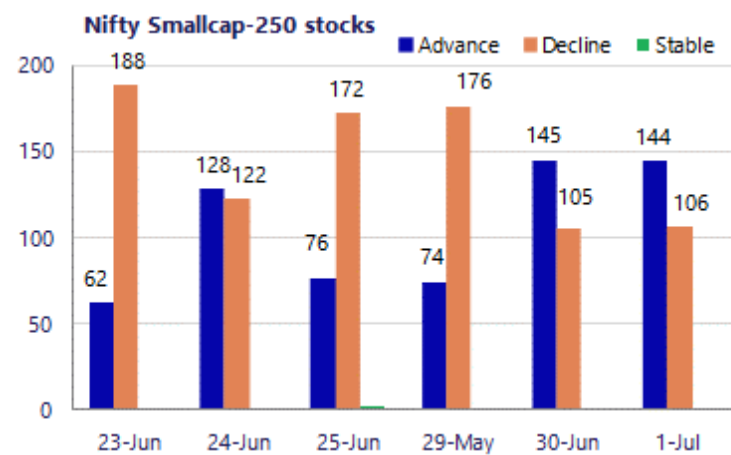
Sensex	Period	Closing	% Chng	Trend	Reversal	2 Sup	1 Sup	Pivot	1 Res	2 Res
Nifty	Daily	24005.85	0.59%	-6	24005.30	23829	23917	23984	24072	24138
	Weekly	24056.00	0.18%	3	23597.45	23558	23807	24034	24283	24511
	Monthly	23865.75	1.35%	-6	24660.55	22541	23203	23733	24395	24924
Bank Nifty	Daily	58033.05	0.85%	-6	58172.75	57239	57636	57885	58282	58531
	Weekly	58177.05	0.85%	3	55666.90	56355	57266	57986	58897	59617
	Monthly	57542.90	6.09%	-4	59050.45	50746	54145	56425	59824	62104
Sensex	Daily	76922.64	0.58%	-6	76921.35	76285	76604	76857	77176	77429
	Weekly	77100.47	0.39%	3	74867.00	75275	76188	76995	77908	78716
	Monthly	76478.67	2.28%	-6	78980.70	71383	73931	75867	78415	80351

Gainers - Losers (Nifty 500 Stocks)
Gainers

Company Name	Last Price	% Gain	Volume
Delhivery	507.7	7.55%	471.95
Aegis Logistics	1,254.70	6.88%	1166
Eternal	279.7	5.71%	266.3
Aditya Birla Re	1,396.00	5.47%	1323.6
Dabur India	444.75	5.34%	422.9
Cemindia Proj	1,363.30	4.97%	1305.7
DLF	648.70	4.62%	620.45

Losers

Company Name	Last Price	% Loss	Volume
Apar Ind	14,598.00	-6.99%	15849
COFORGE	1370.7	-6.48%	1470.3
Himadri Special	645.55	-4.95%	678.7
GE Shipping	1,421.00	-4.19%	1484.6
Birlasoft	275.70	-3.70%	286.2
HCL Tech	1034.2	-3.51%	1070
Endurance Techn	2593.3	-3.00%	2673.6



Nifty Daily chart with RSI indicator



BankNifty Daily chart with RSI indicator



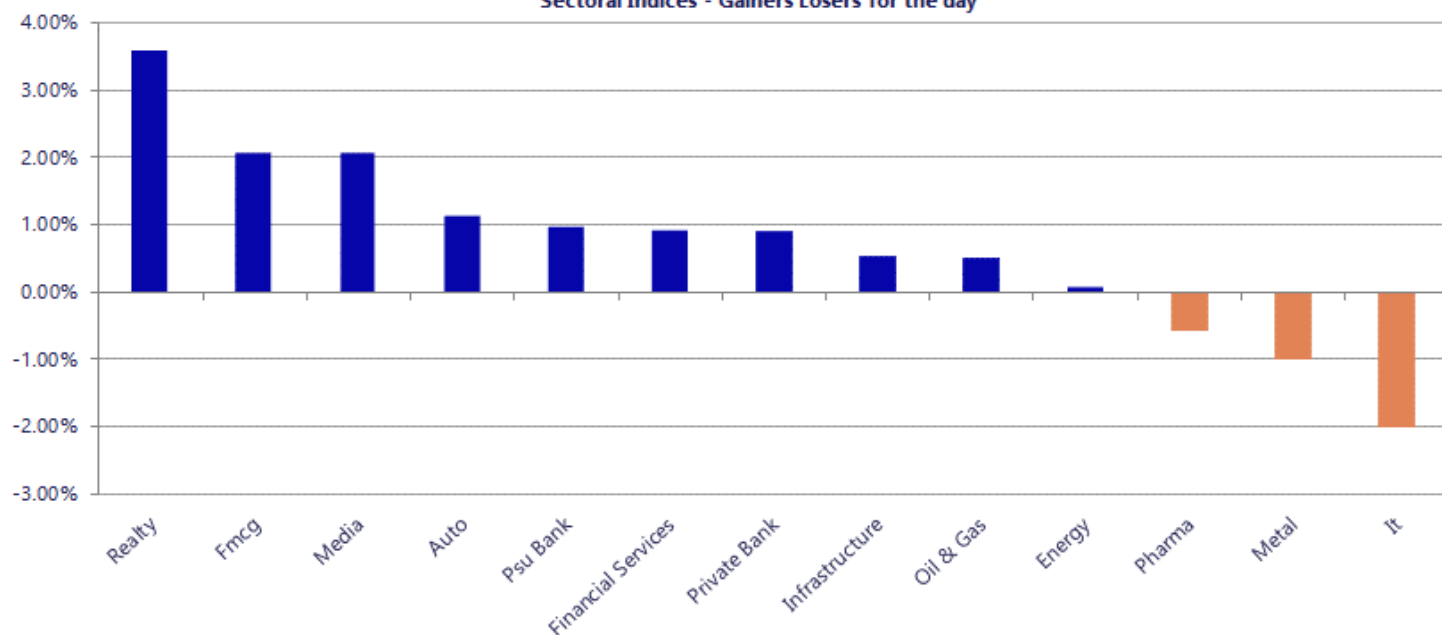
Breakouts - Cross above 200 DMA			
Company Name	LCP	Change %	200 DMA
Hind Composites	465.25	7.21	433.96
JTEKT India	151.98	6.05	143.31
Huhtamaki India	209.4	4.96	199.51
Godrej Prop	1959.6	3.92	1885.68
GMDC	610.65	3.61	589.38
HDFC AMC	2745.8	3.08	2663.66
RITES	233.19	2.95	226.5
MO Nifty Realt	85.6	2.80	83.27
Gem Aromatics	191.18	2.64	186.26
Kanpur Plast	200.11	2.18	195.85
Jayant Agro-Org	209.95	1.86	206.12
Dalmia Sugar	335.6	1.65	330.15
Indian Metals	1322.4	1.44	1303.61
Munjal Showa	130.08	1.42	128.26
One 97 Comm	1203.7	1.37	1187.44
Vaibhav Global	233.14	1.30	230.15
The Hi-Tech Gea	678.05	1.14	670.42
Navneet	148.43	1.08	146.85

Breakdown - Cross below 200 DMA			
Company Name	LCP	Change %	200 DMA
Tera Software	399.65	-3.24	413.02
Shiva Mills Lim	59.42	-3.16	61.36
Emami Realty	82.34	-2.22	84.21
Lovable Lingeri	78.09	-1.63	79.38
Felix Industrie	182.15	-1.36	184.66
Imagicaaworld	47.5	-1.35	48.15
Party	82.15	-1.32	83.25
Updater Service	182.25	-1.27	184.59
Max Estates	423.2	-1.08	427.82
Revathi Equipme	737.85	-1.07	745.82
RBZ Jewellers	135.59	-0.87	136.78
Senco Gold	325.85	-0.69	328.1
Maithan Alloys	1013.2	-0.67	1020.05
Oil Country	58.52	-0.59	58.87
Kirloskar Ferro	456.6	-0.59	459.33
Dr Agarwals	469.05	-0.56	471.67
Endurance Techn	2593.3	-0.52	2606.8
UNIONGOLD	136.3	-0.37	136.81

* Stocks crossing above its Simple Moving Average (200DMA)

* Stocks crossing below its Simple Moving Average (200DMA)

Sectoral Indices - Gainers Losers for the day



Nifty 50 Stocks - Summary Details											
Symbol	LTP	Chng	% Chng	Volume (lacs)	Turnover (crs.)	52w High	Diff with 52w H	52w Low	Diff with 52w L	365 days % chng	30 days % chng
NIFTY 50	24005.85	140.10	0.59%	3521.03	27757	26373	8.98%	22183	8.22%	2.67%	-6.01%
ADANIEN	3143.00	107.00	3.52%	34.14	1063	3150	0.22%	1753	79.29%	8.03%	23.48%
ADANIPTS	1848.20	38.00	2.10%	41.23	764	1882	1.78%	1291	43.22%	3.63%	27.73%
APOLLOHOSP	8620.00	-62.00	-0.71%	1.63	141	8770	1.71%	6697	28.72%	6.31%	14.99%
ASIANPAINT	2715.00	79.30	3.01%	10.97	296	2986	9.07%	2115	28.37%	3.14%	14.58%
AXISBANK	1363.90	18.20	1.35%	31.88	436	1418	3.84%	1043	30.83%	6.90%	16.24%
BAJAJ-AUTO	9845.00	129.00	1.33%	2.00	197	10834	9.13%	7859	25.28%	-5.12%	17.22%
BAJAJFINSV	1799.90	19.70	1.11%	17.69	314	2195	18.00%	1597	12.71%	2.33%	-12.36%
BAJFINANCE	1014.00	9.20	0.92%	68.34	693	1103	8.03%	788	28.70%	14.05%	8.26%
BEL	416.30	4.50	1.09%	88.40	367	473	12.07%	361	15.25%	2.23%	-3.69%
BHARTIARTL	1870.00	18.00	0.97%	43.07	806	2175	14.00%	1741	7.44%	3.28%	-7.40%
CIPLA	1457.00	-8.40	-0.57%	7.53	110	1673	12.91%	1166	24.99%	4.80%	-3.87%
COALINDIA	435.15	-3.90	-0.89%	33.90	148	491	11.42%	369	18.04%	-7.92%	11.65%
DRREDDY	1337.30	-19.80	-1.46%	14.23	191	1415	5.48%	1148	16.45%	3.63%	4.74%
EICHERMOT	7144.00	70.50	1.00%	5.90	420	8230	13.20%	5353	33.46%	0.61%	24.99%
ETERNAL	280.00	15.40	5.82%	668.37	1836	368	24.01%	213	31.70%	12.86%	7.28%
GRASIM	3139.00	39.00	1.26%	4.90	154	3200	1.91%	2503	25.43%	1.17%	10.21%
HCLTECH	1035.40	-36.40	-3.40%	38.19	401	1780	41.83%	1030	0.52%	-13.36%	-39.74%
HDFCBANK	796.00	-1.95	-0.24%	260.94	2082	1021	22.00%	727	9.54%	7.18%	-20.88%
HDFCLIFE	570.65	-5.20	-0.90%	68.40	389	821	30.47%	543	5.09%	-2.71%	-29.54%
HINDALCO	939.40	-17.20	-1.80%	56.37	532	1176	20.12%	658	42.87%	-17.69%	35.30%
HINDUNILVR	2181.50	63.30	2.99%	24.97	542	2750	20.67%	2023	7.86%	4.66%	-4.97%
ICICIBANK	1377.60	2.40	0.17%	119.48	1645	1500	8.16%	1188	16.00%	11.12%	-3.80%
INDIGO	5383.50	15.00	0.28%	6.69	360	6233	13.62%	3895	38.21%	20.89%	-9.75%
INFY	986.00	-14.40	-1.44%	130.37	1296	1728	42.94%	982	0.37%	-18.00%	-38.64%
ITC	290.05	3.10	1.08%	65.49	190	427	32.07%	275	5.45%	3.72%	-30.13%
JIOFIN	239.90	3.46	1.46%	79.57	190	339	29.15%	223	7.43%	2.11%	-27.21%
JSWSTEEL	1224.90	-1.50	-0.12%	16.35	199	1328	7.76%	1008	21.52%	-5.73%	18.97%
KOTAKBANK	399.00	6.75	1.72%	217.23	863	453	11.96%	346	15.48%	5.72%	-8.64%
LT	4092.00	-51.40	-1.24%	14.37	590	4440	7.84%	3288	24.45%	2.02%	11.60%
M&M	3132.00	63.20	2.06%	27.55	865	3840	18.44%	2896	8.15%	5.45%	-1.39%
MARUTI	14340.00	225.00	1.59%	13.98	2004	17370	17.44%	12201	17.53%	10.77%	15.25%
MAXHEALTH	1141.70	12.40	1.10%	13.30	151	1314	13.13%	903	26.43%	21.66%	-10.78%
NESTLEIND	1453.00	47.80	3.40%	26.72	386	1498	3.01%	1085	33.95%	4.40%	20.58%
NTPC	357.40	0.75	0.21%	69.15	248	414	13.75%	316	13.26%	-5.62%	7.46%
ONGC	234.92	0.02	0.01%	118.34	278	308	23.60%	228	3.19%	-11.12%	-3.47%
POWERGRID	287.10	0.80	0.28%	81.47	234	325	11.65%	250	14.84%	0.33%	-3.51%
RELIANCE	1306.50	12.60	0.97%	70.01	915	1612	18.94%	1253	4.25%	-1.02%	-14.52%
SBILIFE	1793.00	27.30	1.55%	6.24	111	2132	15.90%	1700	5.45%	-1.08%	-3.73%
SBIN	1043.50	16.60	1.62%	62.95	655	1235	15.49%	787	32.67%	9.37%	27.21%
SHRIRAMFIN	1045.00	2.80	0.27%	47.23	496	1108	5.69%	567	84.47%	13.70%	50.05%
SUNPHARMA	1867.40	4.90	0.26%	12.30	230	1917	2.57%	1548	20.63%	3.95%	12.01%
TATACONSUM	1090.00	14.40	1.34%	22.02	240	1283	15.02%	1007	8.22%	-4.66%	-0.51%
TATASTEEL	185.00	-3.06	-1.63%	206.07	385	224	17.56%	153	21.30%	-12.14%	15.58%
TCS	1981.80	-49.70	-2.45%	46.58	935	3490	43.21%	1977	0.25%	-13.74%	-42.22%
TECHM	1360.00	-44.70	-3.18%	37.93	518	1854	26.65%	1304	4.29%	-11.87%	-18.62%
TITAN	4395.00	-9.00	-0.20%	11.69	520	4605	4.56%	3303	33.06%	9.20%	18.77%
TMPV	347.95	-4.25	-1.21%	120.58	422	740	52.96%	294	18.23%	-9.60%	-49.12%
TRENT	3288.70	6.10	0.19%	6.83	224	4174	21.21%	2184	50.60%	18.66%	-19.71%
ULTRACEMCO	11460.00	207.00	1.84%	1.19	136	13110	12.59%	10325	10.99%	2.03%	-6.14%
WIPRO	169.85	-0.54	-0.32%	346.30	591	273	37.81%	169	0.35%	-17.71%	-35.80%

Disclaimer / Disclosures

ANALYST CERTIFICATION

I, Mrs. Vaishali Parekh B.com, Research Analyst, author and the name subscribed to this report, hereby certify that all of the views expressed in this research report accurately reflect our views about the subject issuer(s) or securities. We also certify that no part of our compensation was, is, or will be directly or indirectly related to the specific recommendation(s) or view(s) in this report.

Terms & conditions and other disclosures:

Prabhudas Lilladher Pvt. Ltd, Mumbai, India (hereinafter referred to as "PL") is engaged in the business of Stock Broking, Portfolio Manager, Depository Participant and distribution for third party financial products. PL is a subsidiary of Prabhudas Lilladher Advisory Services Pvt Ltd. which has its various subsidiaries engaged in business of commodity broking, investment banking, financial services (margin funding) and distribution of third party financial/other products, details in respect of which are available at www.plindia.com

This document has been prepared by the Research Division of PL and is meant for use by the recipient only as information and is not for circulation. This document is not to be reported or copied or made available to others without prior permission of PL. It should not be considered or taken as an offer to sell or a solicitation to buy or sell any security.

The information contained in this report has been obtained from sources that are considered to be reliable. However, PL has not independently verified the accuracy or completeness of the same. Neither PL nor any of its affiliates, its directors or its employees accepts any responsibility of whatsoever nature for the information, statements and opinion given, made available or expressed herein or for any omission therein.

Recipients of this report should be aware that past performance is not necessarily a guide to future performance and value of investments can go down as well. The suitability or otherwise of any investments will depend upon the recipient's particular circumstances and, in case of doubt, advice should be sought from an independent expert/advisor.

Either PL or its affiliates or its directors or its employees or its representatives or its clients or their relatives may have position(s), make market, act as principal or engage in transactions of securities of companies referred to in this report and they may have used the research material prior to publication.

PL may from time to time solicit or perform investment banking or other services for any company mentioned in this document.

PL is registered as Research Analyst under Securities and Exchange Board of India (Research Analysts) Regulations, 2014 PL submits that no material disciplinary action has been taken on us by any Regulatory Authority impacting Equity Research Analysis activities.

PL or its research analysts or its associates or his relatives do not have any financial interest in the subject company.

PL or its research analysts or its associates or his relatives do not have actual/beneficial ownership of one per cent or more securities of the subject company at the end of the month immediately preceding the date of publication of the research report.

PL or its research analysts or its associates or his relatives do not have any material conflict of interest at the time of publication of the research report.

PL or its associates might have received compensation from the subject company in the past twelve months.

PL or its associates might have managed or co-managed public offering of securities for the subject company in the past twelve months or mandated by the subject company for any other assignment in the past twelve months.

PL or its associates might have received any compensation for investment banking or merchant banking or brokerage services from the subject company in the past twelve months.

PL or its associates might have received any compensation for products or services other than investment banking or merchant banking or brokerage services from the subject company in the past twelve months PL or its associates might have received any compensation or other benefits from the subject company or third party in connection with the research report.

PL encourages independence in research report preparation and strives to minimize conflict in preparation of research report. PL or its analysts did not receive any compensation or other benefits from the subject Company or third party in connection with the preparation of the research report. PL or its Research Analysts do not have any material conflict of interest at the time of publication of this report.

It is confirmed that Mrs. Vaishali Parekh B.com, Research Analyst of this report has not received any compensation from the companies mentioned in the report in the preceding twelve months compensation of our Research Analysts is not based on any specific merchant banking, investment banking or brokerage service transactions.

The Research analysts for this report certifies that all of the views expressed in this report accurately reflect his or her personal views about the subject company or companies and its or their securities, and no part of his or her compensation was, is or will be, directly or indirectly related to specific recommendations or views expressed in this report.

The research analysts for this report has not served as an officer, director or employee of the subject company PL or its research analysts have not engaged in market making activity for the subject company

Our sales people, traders, and other professionals or affiliates may provide oral or written market commentary or trading strategies to our clients that reflect opinions that are contrary to the opinions expressed herein, and our proprietary trading and investing businesses may make investment decisions that are inconsistent with the recommendations expressed herein. In reviewing these materials, you should be aware that any or all of the foregoing, among other things, may give rise to real or potential conflicts of interest.

PL and its associates, their directors and employees may (a) from time to time, have a long or short position in, and buy or sell the securities of the subject company or (b) be engaged in any other transaction involving such securities and earn brokerage or other compensation or act as a market maker in the financial instruments of the subject company or act as an advisor or lender/borrower to the subject company or may have any other potential conflict of interests with respect to any recommendation and other related information and opinions.

Regd. Office: 3rd Floor, Sadhana House, 570, P. B. Marg, Behind Mahindra Tower, Worli, Mumbai - 400 018, India.