

* Sensex 77502.12 + 579.48

* Nifty 24175.70 + 169.85

* Bank Nifty 58031.65 - 1.40

Market Preview

Nifty surges ahead with bias improving

Nifty witnessed a decent pick up gaining for the second consecutive session with IT stocks showing signs of revival from the highly oversold zone expecting for further follow through of the positive move. BankNifty remained lull with narrow rangebound movement to end the session on a flat note near 58000 zone. The market breadth was positive with the advance decline indicating a ratio of 2:1 at close.

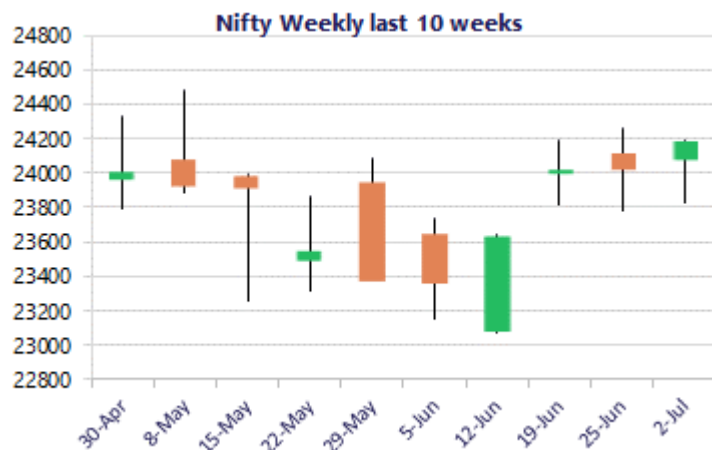
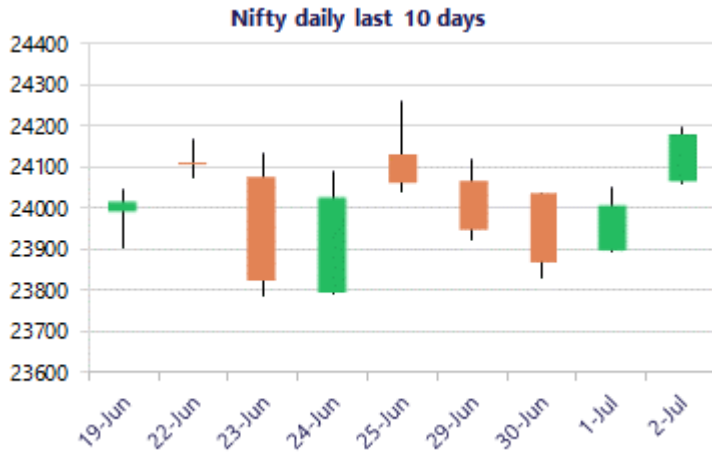
Market Forecast

Nifty daily range 24000 - 24400

Nifty continued with the positive move with good backing from the IT sector gaining from the highly oversold zone helping the index to close near the 24200 zone with bias slightly improving once again and can anticipate for further rise in the coming sessions. As mentioned earlier, the index would need a decisive breach above the tough resistance hurdle near the 24350 zone and thereafter, establish conviction and clarity for fresh upward move. On the downside, the crucial near-term support would be positioned near the 23800 zone which needs to be sustained.

BankNifty witnessed a muted session after a good opening which fizzled out and thereafter, remained flat hovering within a narrow range to close near the 58000 level with bias maintained intact with a positive approach. As mentioned earlier, the index continue to sustain above the important 200 period MA at 57200 zone which is maintained as the near-term support and with a flag pattern visible on the daily chart, it would need to breach above the 58500 zone decisively to indicate a breakout and thereafter, trigger for a fresh upward move in the coming days.

The support for the day is seen at 24000 levels, while the resistance is seen at 24400 levels. BankNifty would have the daily range of 57500-58600 levels.



*Blue candle → Close rate > Open rate * Red candle → Close rate < Open rate

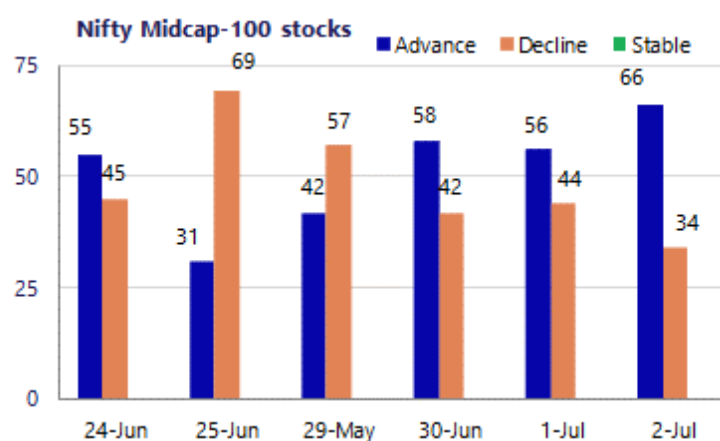
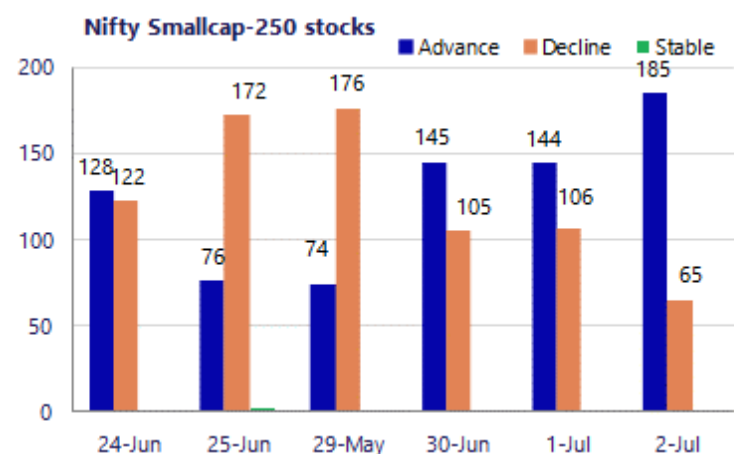
Sensex	Period	Closing	% Chng	Trend	Reversal	2 Sup	1 Sup	Pivot	1 Res	2 Res
Nifty	Daily	24175.70	0.71%	1	24039.90	24007	24091	24143	24227	24279
	Weekly	24056.00	0.18%	3	23597.45	23558	23807	24034	24283	24511
	Monthly	23865.75	1.35%	-6	24660.55	22541	23203	23733	24395	24924
Bank Nifty	Daily	58031.65	0.00%	-7	58037.30	57593	57812	58104	58324	58616
	Weekly	58177.05	0.85%	3	55666.90	56355	57266	57986	58897	59617
	Monthly	57542.90	6.09%	-4	59050.45	50746	54145	56425	59824	62104
Sensex	Daily	77502.12	0.75%	1	77070.95	76867	77184	77382	77699	77897
	Weekly	77100.47	0.39%	3	74867.00	75275	76188	76995	77908	78716
	Monthly	76478.67	2.28%	-6	78980.70	71383	73931	75867	78415	80351

Gainers - Losers (Nifty 500 Stocks)
Gainers

Company Name	Last Price	% Gain	Volume
eClerx Services	1431.2	7.42%	1341.3
C. E. Info Syst	906.00	7.11%	852.6
Exide Ind	414.1	6.08%	392
COFORGE	1,443.10	5.28%	1395
Cemindia Proj	1,419.00	4.09%	1380
Blue Jet	569.55	3.71%	553.1
Ceat	3,767.70	3.66%	3668

Losers

Company Name	Last Price	% Loss	Volume
Bank of Baroda	260.25	-4.20%	273.5
AIA Engineering	4800	-3.92%	5019
Avenue Supermar	4,187.00	-3.27%	4328.6
BHEL	401.95	-2.90%	414.95
BSE Limited	3,834.70	-2.77%	3963.7
Aditya Infotech	3480.3	-2.58%	3582.7
CarTrade Tech	2742	-2.54%	2780



Nifty Daily chart with RSI indicator



BankNifty Daily chart with RSI indicator

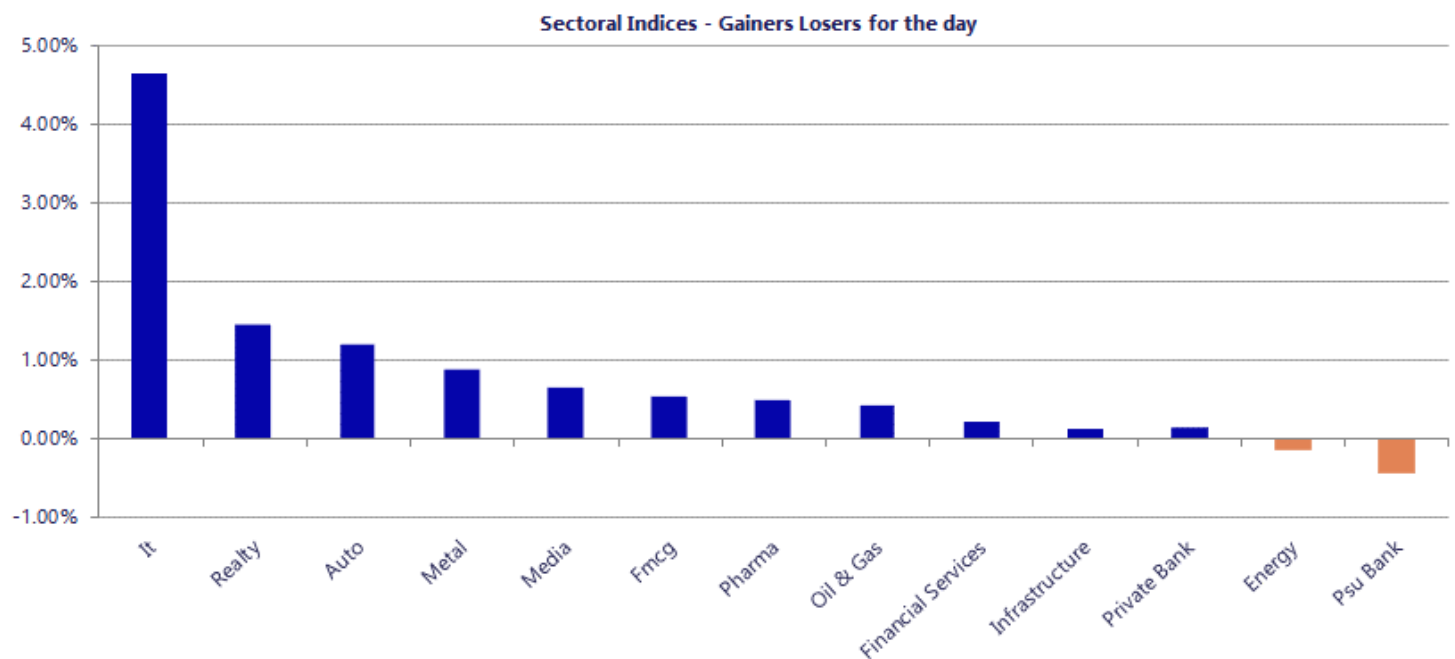


Breakouts - Cross above 200 DMA			
Company Name	LCP	Change %	200 DMA
Sacheerome	354.25	10.42	320.81
RBZ Jewellers	145.9	6.68	136.77
Cantabil Retail	269.36	6.33	253.33
Mahamaya Steel	802.05	4.73	765.82
Indigo Paints	1077.1	4.57	1029.99
IFGL Refractory	208.95	4.40	200.14
Control Print	711.6	4.38	681.76
Regaal Resource	82.29	3.93	79.18
Prime Focus	243.28	3.74	234.51
Piccadily Agro	624.2	3.72	601.79
SGBNOV26	14499	3.13	14058.28
Bhartiya Inter	798.25	2.92	775.61
Updater Service	189.41	2.80	184.25
Poonawalla Fin	456.9	2.48	445.83
Thai Casting	105.4	2.45	102.88
Gravita India	1687.4	2.43	1647.3
Kirloskar Ferro	469.7	2.25	459.38
Endurance Techn	2663	2.23	2604.93

Breakdown - Cross below 200 DMA			
Company Name	LCP	Change %	200 DMA
Chandan Healthc	250	-7.77	271.06
D P Wires	186.37	-3.97	194.08
Lyka Labs	72.33	-2.38	74.09
Electrosteel	78.21	-2.37	80.11
Shigan Quantum	64	-1.37	64.89
GRP	1853.9	-1.37	1879.65
MPS	1872.9	-1.00	1891.87
Ugar Sugar Work	40.34	-0.98	40.74
EPM	85.61	-0.73	86.24
Godavari Bioref	278.6	-0.66	280.44
RITES	224.93	-0.63	226.36
Mahanagar Gas	1143.4	-0.46	1148.65
Alkem Lab	5500.5	-0.43	5524.39
Suryalakshmi Co	58.43	-0.43	58.68
NBCC (India)	103.06	-0.09	103.15
ABSL Nifty 200	31.12	-0.03	31.13

* Stocks crossing above its Simple Moving Average (200DMA)

* Stocks crossing below its Simple Moving Average (200DMA)



Nifty 50 Stocks - Summary Details											
Symbol	LTP	Chng	% Chng	Volume (lacs)	Turnover (crs.)	52w High	Diff with 52w H	52w Low	Diff with 52w L	365 days % chng	30 days % chng
NIFTY 50	24175.70	169.85	0.71%	3729.13	30787	26373	8.33%	22183	8.99%	2.95%	-5.02%
ADANIENT	3165.00	21.40	0.68%	33.99	1080	3230	2.00%	1753	80.55%	6.63%	23.94%
ADANIPTS	1882.90	34.70	1.88%	30.89	578	1888	0.27%	1291	45.90%	3.77%	30.40%
APOLLOHOSP	8724.50	106.00	1.23%	1.53	133	8770	0.52%	6697	30.28%	7.85%	17.25%
ASIANPAINT	2736.00	19.60	0.72%	16.30	447	2986	8.36%	2115	29.36%	2.83%	13.09%
AXISBANK	1359.20	-9.50	-0.69%	40.13	548	1418	4.17%	1043	30.38%	8.64%	15.65%
BAJAJ-AUTO	9837.00	-5.00	-0.05%	4.24	416	10834	9.20%	7859	25.18%	-4.32%	17.72%
BAJAJFINSV	1859.10	61.50	3.42%	17.87	328	2195	15.30%	1597	16.41%	6.76%	-7.41%
BAJFINANCE	1020.00	5.10	0.50%	81.68	829	1103	7.48%	788	29.46%	15.65%	10.51%
BEL	414.80	-1.45	-0.35%	107.36	445	473	12.39%	361	14.84%	1.70%	-2.85%
BHARTIARTL	1872.90	1.90	0.10%	52.82	985	2175	13.87%	1741	7.61%	3.24%	-7.89%
CIPLA	1453.60	-3.10	-0.21%	7.31	107	1673	13.11%	1166	24.70%	5.39%	-2.94%
COALINDIA	438.55	3.80	0.87%	49.40	215	491	10.73%	369	18.96%	-7.12%	13.35%
DRREDDY	1342.20	2.30	0.17%	8.09	109	1415	5.14%	1148	16.88%	5.35%	5.62%
EICHERMOT	7258.00	119.00	1.67%	8.29	597	8230	11.81%	5353	35.59%	1.63%	26.83%
ETERNAL	279.60	-0.10	-0.04%	412.98	1163	368	24.11%	213	31.51%	11.51%	7.64%
GRASIM	3163.00	22.60	0.72%	4.50	142	3200	1.16%	2503	26.39%	2.11%	10.99%
HCLTECH	1081.40	47.20	4.56%	37.27	400	1780	39.25%	1030	4.99%	-13.04%	-37.08%
HDFCBANK	794.95	-1.20	-0.15%	341.43	2725	1021	22.10%	727	9.40%	6.24%	-19.94%
HDFCLIFE	571.20	1.25	0.22%	11.62	66	821	30.41%	543	5.19%	-1.50%	-27.67%
HINDALCO	950.50	10.80	1.15%	35.05	334	1176	19.18%	658	44.56%	-17.08%	36.11%
HINDUNILVR	2209.00	27.00	1.24%	25.85	569	2750	19.67%	2023	9.22%	5.51%	-4.25%
ICICIBANK	1401.00	21.20	1.54%	157.79	2202	1500	6.60%	1188	17.97%	14.22%	-1.88%
INDIGO	5441.50	42.50	0.79%	9.91	538	6233	12.69%	3895	39.70%	21.84%	-8.64%
INFY	1042.60	57.30	5.82%	187.40	1938	1728	39.66%	982	6.13%	-17.96%	-35.26%
ITC	289.75	-0.55	-0.19%	127.22	368	427	32.14%	275	5.34%	2.29%	-29.83%
JIOFIN	239.69	-0.32	-0.13%	58.34	140	339	29.21%	223	7.34%	0.86%	-26.63%
JSWSTEEL	1222.00	5.80	0.48%	13.02	159	1328	7.98%	1008	21.23%	-6.77%	15.29%
KOTAKBANK	398.55	-1.90	-0.47%	129.81	519	453	12.06%	346	15.35%	5.14%	-8.13%
LT	4057.00	-35.60	-0.87%	24.81	1002	4440	8.63%	3288	23.38%	1.40%	12.79%
M&M	3187.00	57.00	1.82%	26.24	826	3840	17.00%	2896	10.05%	6.29%	0.69%
MARUTI	14329.00	-66.00	-0.46%	3.27	470	17370	17.51%	12201	17.44%	10.04%	13.52%
MAXHEALTH	1127.90	-12.00	-1.05%	10.54	119	1314	14.18%	903	24.91%	18.89%	-12.21%
NESTLEIND	1445.70	-8.10	-0.56%	14.34	208	1498	3.50%	1085	33.28%	3.36%	21.08%
NTPC	357.00	-0.90	-0.25%	65.13	233	414	13.85%	316	13.14%	-2.83%	6.97%
ONGC	236.20	1.21	0.51%	140.32	330	308	23.19%	228	3.76%	-10.88%	-2.02%
POWERGRID	288.50	0.95	0.33%	64.57	186	325	11.22%	250	15.40%	2.25%	-2.15%
RELIANCE	1301.90	-6.10	-0.47%	177.94	2320	1612	19.23%	1253	3.89%	-0.97%	-14.28%
SBILIFE	1783.80	-7.10	-0.40%	6.47	115	2132	16.33%	1700	4.90%	-0.99%	-3.93%
SBIN	1049.00	1.60	0.15%	146.82	1544	1235	15.04%	787	33.37%	9.65%	29.04%
SHRIRAMFIN	1066.00	17.90	1.71%	57.36	610	1108	3.79%	567	88.17%	16.92%	57.48%
SUNPHARMA	1870.10	3.90	0.21%	14.85	278	1917	2.43%	1548	20.81%	4.48%	11.48%
TATACONSUM	1108.00	17.10	1.57%	23.16	255	1283	13.62%	1007	10.01%	-4.04%	1.11%
TATASTEEL	188.50	3.33	1.80%	291.36	545	224	16.00%	153	23.60%	-10.49%	13.64%
TCS	2070.90	88.30	4.45%	60.40	1239	3490	40.66%	1977	4.76%	-15.37%	-39.51%
TECHM	1424.40	62.20	4.57%	30.35	427	1854	23.17%	1304	9.22%	-9.35%	-15.07%
TITAN	4479.00	80.40	1.83%	8.21	365	4605	2.74%	3303	35.60%	9.83%	20.79%
TMPV	346.35	-1.45	-0.42%	104.20	361	740	53.18%	294	17.69%	-11.24%	-49.70%
TRENT	3315.00	24.70	0.75%	10.92	362	4174	20.58%	2184	51.81%	18.10%	-20.09%
ULTRACEMCO	11550.00	94.00	0.82%	1.38	159	13110	11.90%	10325	11.86%	3.45%	-7.12%
WIPRO	174.00	3.87	2.27%	434.44	753	273	36.29%	169	2.96%	-17.08%	-34.83%

Disclaimer / Disclosures

ANALYST CERTIFICATION

I, Mrs. Vaishali Parekh B.com, Research Analyst, author and the name subscribed to this report, hereby certify that all of the views expressed in this research report accurately reflect our views about the subject issuer(s) or securities. We also certify that no part of our compensation was, is, or will be directly or indirectly related to the specific recommendation(s) or view(s) in this report.

Terms & conditions and other disclosures:

Prabhudas Lilladher Pvt. Ltd, Mumbai, India (hereinafter referred to as "PL") is engaged in the business of Stock Broking, Portfolio Manager, Depository Participant and distribution for third party financial products. PL is a subsidiary of Prabhudas Lilladher Advisory Services Pvt Ltd. which has its various subsidiaries engaged in business of commodity broking, investment banking, financial services (margin funding) and distribution of third party financial/other products, details in respect of which are available at www.plindia.com

This document has been prepared by the Research Division of PL and is meant for use by the recipient only as information and is not for circulation. This document is not to be reported or copied or made available to others without prior permission of PL. It should not be considered or taken as an offer to sell or a solicitation to buy or sell any security.

The information contained in this report has been obtained from sources that are considered to be reliable. However, PL has not independently verified the accuracy or completeness of the same. Neither PL nor any of its affiliates, its directors or its employees accepts any responsibility of whatsoever nature for the information, statements and opinion given, made available or expressed herein or for any omission therein.

Recipients of this report should be aware that past performance is not necessarily a guide to future performance and value of investments can go down as well. The suitability or otherwise of any investments will depend upon the recipient's particular circumstances and, in case of doubt, advice should be sought from an independent expert/advisor.

Either PL or its affiliates or its directors or its employees or its representatives or its clients or their relatives may have position(s), make market, act as principal or engage in transactions of securities of companies referred to in this report and they may have used the research material prior to publication.

PL may from time to time solicit or perform investment banking or other services for any company mentioned in this document.

PL is registered as Research Analyst under Securities and Exchange Board of India (Research Analysts) Regulations, 2014 PL submits that no material disciplinary action has been taken on us by any Regulatory Authority impacting Equity Research Analysis activities.

PL or its research analysts or its associates or his relatives do not have any financial interest in the subject company.

PL or its research analysts or its associates or his relatives do not have actual/beneficial ownership of one per cent or more securities of the subject company at the end of the month immediately preceding the date of publication of the research report.

PL or its research analysts or its associates or his relatives do not have any material conflict of interest at the time of publication of the research report.

PL or its associates might have received compensation from the subject company in the past twelve months.

PL or its associates might have managed or co-managed public offering of securities for the subject company in the past twelve months or mandated by the subject company for any other assignment in the past twelve months.

PL or its associates might have received any compensation for investment banking or merchant banking or brokerage services from the subject company in the past twelve months.

PL or its associates might have received any compensation for products or services other than investment banking or merchant banking or brokerage services from the subject company in the past twelve months PL or its associates might have received any compensation or other benefits from the subject company or third party in connection with the research report.

PL encourages independence in research report preparation and strives to minimize conflict in preparation of research report. PL or its analysts did not receive any compensation or other benefits from the subject Company or third party in connection with the preparation of the research report. PL or its Research Analysts do not have any material conflict of interest at the time of publication of this report.

It is confirmed that Mrs. Vaishali Parekh B.com, Research Analyst of this report has not received any compensation from the companies mentioned in the report in the preceding twelve months compensation of our Research Analysts is not based on any specific merchant banking, investment banking or brokerage service transactions.

The Research analysts for this report certifies that all of the views expressed in this report accurately reflect his or her personal views about the subject company or companies and its or their securities, and no part of his or her compensation was, is or will be, directly or indirectly related to specific recommendations or views expressed in this report.

The research analysts for this report has not served as an officer, director or employee of the subject company PL or its research analysts have not engaged in market making activity for the subject company

Our sales people, traders, and other professionals or affiliates may provide oral or written market commentary or trading strategies to our clients that reflect opinions that are contrary to the opinions expressed herein, and our proprietary trading and investing businesses may make investment decisions that are inconsistent with the recommendations expressed herein. In reviewing these materials, you should be aware that any or all of the foregoing, among other things, may give rise to real or potential conflicts of interest.

PL and its associates, their directors and employees may (a) from time to time, have a long or short position in, and buy or sell the securities of the subject company or (b) be engaged in any other transaction involving such securities and earn brokerage or other compensation or act as a market maker in the financial instruments of the subject company or act as an advisor or lender/borrower to the subject company or may have any other potential conflict of interests with respect to any recommendation and other related information and opinions.

Regd. Office: 3rd Floor, Sadhana House, 570, P. B. Marg, Behind Mahindra Tower, Worli, Mumbai - 400 018, India.