

\* Sensex 77763.91 + 261.79

\* Nifty 24270.85 + 95.15

\* Bank Nifty 57938.50 - 93.15

## Market Preview

### Nifty resists near the tough hurdle at 24350 zone

Nifty after opening on a positive note near the 24350 level fizzled out finding resistance once again and closed near the 24270 zone with bias maintained intact. BankNifty resisted near the 58400 level after the strong opening but gave in with profit booking seen to end near the 58000 zone. The market breadth was overall flat with the advance decline indicating a neutral ratio at close.

## Market Forecast

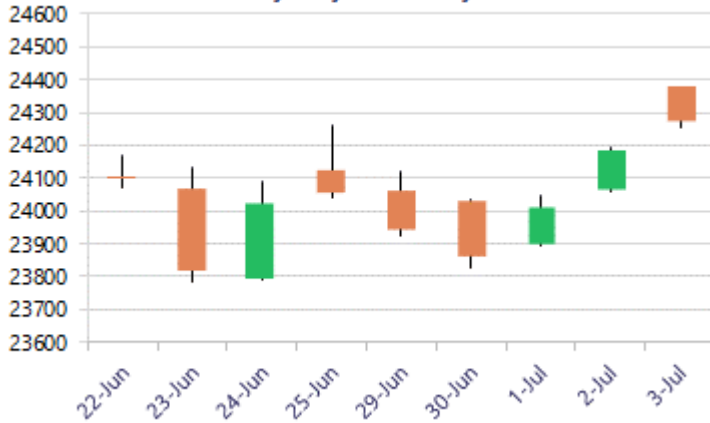
### Nifty daily range 24100 - 24400

Nifty opened with a gap up near the 24350-zone finding resistance once again and slipped down in the second half to end near the 24250 zone with bias and sentiment maintained with a cautiously positive approach. The hurdle near the 24350 zone continues to be the crucial resistance barrier which needs to be breached decisively as mentioned earlier. On the downside, the crucial near-term support would be positioned near the 23800 zone which needs to be sustained.

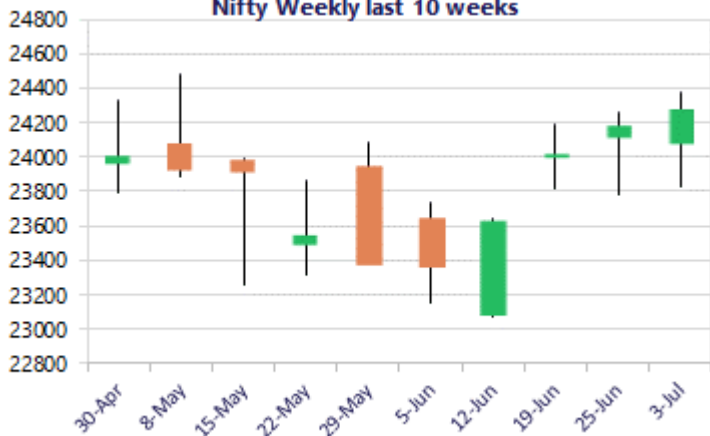
BankNifty continue to hover near the 58000 zone with rangebound session witnessed having tough resistance near the 58400 zone which needs to be breached on the upside to trigger for fresh upside move in the coming days. As mentioned earlier, the index would have the important near-term support at the significant 200 period MA at 57200 zone which needs to be sustained to maintain the overall bias intact.

The support for the day is seen at 24100 levels, while the resistance is seen at 24400 levels. BankNifty would have the daily range of 57500-58600 levels.

Nifty daily last 10 days



Nifty Weekly last 10 weeks

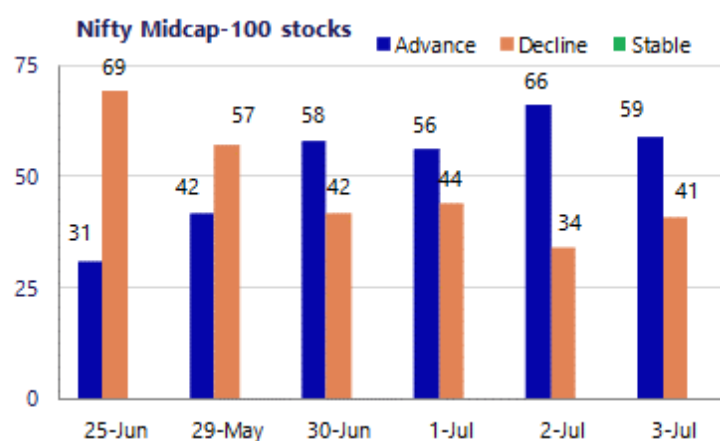
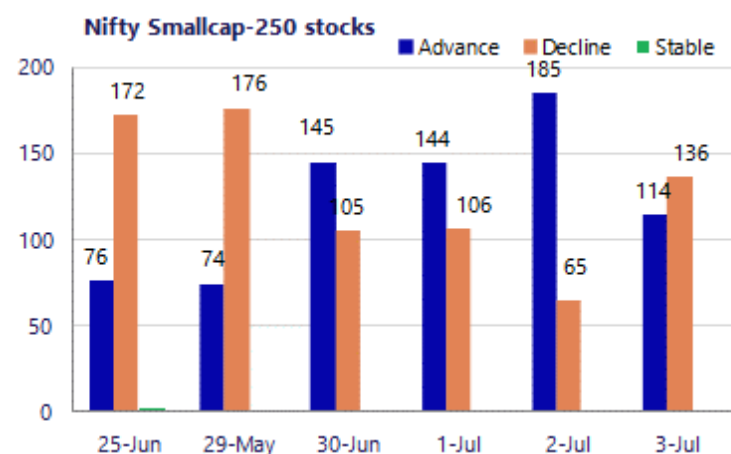


\*Blue candle → Close rate > Open rate \* Red candle → Close rate < Open rate

Sensex	Period	Closing	% Chng	Trend	Reversal	2 Sup	1 Sup	Pivot	1 Res	2 Res
Nifty	Daily	24270.85	0.39%	2	24118.45	24175	24223	24300	24349	24426
	Weekly	24270.85	0.89%	3	23597.45	23612	23941	24159	24488	24705
	Monthly	23865.75	1.35%	-6	24660.55	22541	23203	23733	24395	24924
Bank Nifty	Daily	57938.50	-0.16%	-8	58115.95	57483	57711	58027	58255	58571
	Weekly	57938.50	-0.41%	3	55666.90	57026	57482	57913	58369	58799
	Monthly	57542.90	6.09%	-4	59050.45	50746	54145	56425	59824	62104
Sensex	Daily	77763.91	0.34%	2	77320.90	77430	77597	77877	78044	78325
	Weekly	77763.91	0.86%	3	74867.00	75975	76869	77224	78119	78474
	Monthly	76478.67	2.28%	-6	78980.70	71383	73931	75867	78415	80351

**Gainers - Losers ( Nifty 500 Stocks )**

Gainers				Losers			
Company Name	Last Price	% Gain	Volume	Company Name	Last Price	% Loss	Volume
Aegis Vopak	257.43	9.67%	237	GE Vernova TD	4,401.50	-8.74%	4581.6
AWL Agri	191.11	3.89%	188.8	CG Power	892.55	-6.97%	911.4
Aurobindo Pharm	1620.5	3.81%	1568	Apar Ind	14,174.00	-6.14%	15170
3M India	35,235.00	3.75%	34105	Avenue Supermar	3,994.40	-4.60%	4090
Aadhar Housing	555.60	3.71%	539.9	BHEL	383.60	-4.57%	402
360 ONE WAM	1,109.50	3.69%	1319174	Data Patterns	4507	-3.21%	4676
Anand Rathi	2,061.70	3.62%	2011.7	Belrise Ind	230.74	-3.13%	239.79



### Nifty Daily chart with RSI indicator



### BankNifty Daily chart with RSI indicator

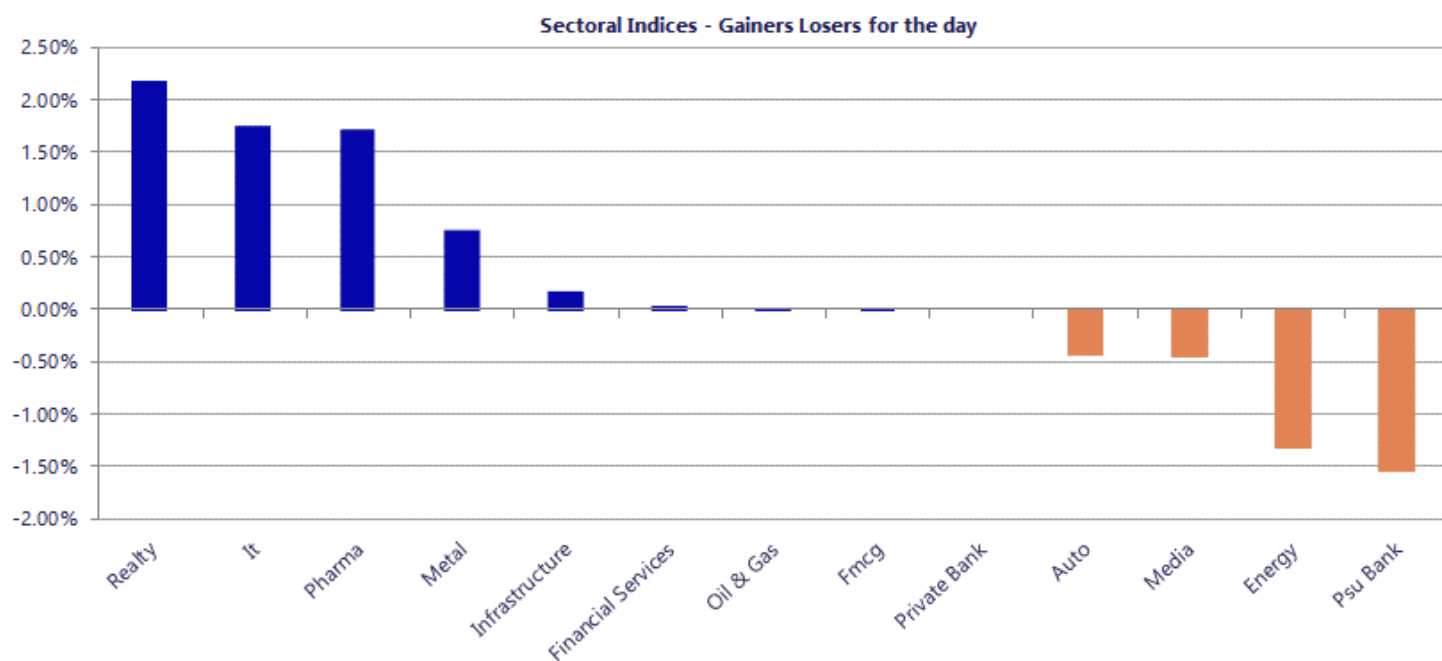


Breakouts - Cross above 200 DMA			
Company Name	LCP	Change %	200 DMA
Indo Rama Synth	50.38	9.83	45.87
SUMITOMO	502.3	9.72	457.82
Elgi Rubber	55.29	9.64	50.43
Butterfly	712.7	8.58	656.37
Ganesh Ecosph	1027.75	7.40	956.97
Moschip Tech	223.55	6.01	210.87
Jubilant Agri	2186.7	5.24	2077.92
ROX Hi-Tech	41.25	4.94	39.31
Yash Optics & L	128.8	4.83	122.86
Lovable Lingeri	82.89	4.65	79.21
Barak Vally Cem	45.98	4.19	44.13
Lodha Developer	1057	4.06	1015.75
Asian Hotels	320.65	3.28	310.47
Synoptics Techn	72	3.24	69.74
ANB Metal Cast	374.35	2.76	364.3
Kataria Industr	104.7	2.72	101.93
HUDCO	215.56	2.65	209.99
Kothari Petro	131.95	2.58	128.63

\* Stocks crossing above its Simple Moving Average (200DMA)

Breakdown - Cross below 200 DMA			
Company Name	LCP	Change %	200 DMA
PB Fintech	1591.2	-4.78	1671.05
Transtee Seati	130.3	-3.98	135.7
Aakaar Medical	69	-3.32	71.37
A G Universal	57.75	-3.12	59.61
Shiva Mills Lim	59.42	-3.00	61.26
Avenue Supermar	3994.4	-2.80	4109.33
Lambodhara Text	113.26	-2.39	116.03
Bharat Bijlee	2718.2	-2.07	2775.6
Ashapura Mine	645.6	-2.03	658.98
Torrent Power	1366.5	-1.95	1393.62
Emkay Global	259.15	-1.74	263.75
Capacite Infra	248.95	-1.38	252.43
S J Logistics	337.75	-1.36	342.39
IRM Energy	271.65	-1.20	274.95
Superhouse	152.75	-1.05	154.37
Peria Karamalai	763.85	-1.01	771.68
Mamata Machiner	409	-0.92	412.8
Reliance Chemo	133.06	-0.85	134.2

\* Stocks crossing below its Simple Moving Average (200DMA)



Nifty 50 Stocks - Summary Details											
Symbol	LTP	Chng	% Chng	Volume (lacs)	Turnover (crs.)	52w High	Diff with 52w H	52w Low	Diff with 52w L	365 days % chng	30 days % chng
NIFTY 50	24270.85	95.15	0.39%	3265.36	25950	26373	7.97%	22183	9.41%	3.70%	-4.47%
ADANIEN	3209.90	32.40	1.02%	28.47	904	3230	0.61%	1753	83.11%	9.72%	26.62%
ADANIPTS	1869.40	-13.80	-0.73%	16.45	309	1891	1.15%	1291	44.86%	3.64%	30.63%
APOLLOHOSP	8854.00	158.00	1.82%	3.77	334	8921	0.75%	6697	32.22%	6.80%	17.04%
ASIANPAINT	2738.10	-6.40	-0.23%	4.72	130	2986	8.29%	2115	29.46%	2.84%	12.64%
AXISBANK	1342.00	-20.60	-1.51%	35.00	474	1418	5.38%	1043	28.73%	6.92%	14.59%
BAJAJ-AUTO	9784.00	-73.00	-0.74%	1.45	143	10834	9.69%	7859	24.50%	-4.63%	16.72%
BAJAJFINSV	1890.00	34.30	1.85%	20.37	386	2195	13.90%	1597	18.35%	8.97%	-4.58%
BAJFINANCE	1031.40	13.00	1.28%	93.98	970	1103	6.45%	788	30.90%	17.63%	13.32%
BEL	418.00	2.95	0.71%	120.78	508	473	11.71%	361	15.73%	2.80%	-1.94%
BHARTIARTL	1909.00	34.00	1.81%	50.87	968	2175	12.21%	1741	9.68%	4.65%	-5.46%
CIPLA	1457.90	1.90	0.13%	12.61	184	1673	12.86%	1166	25.07%	6.01%	-3.37%
COALINDIA	439.15	0.25	0.06%	42.82	189	491	10.61%	369	19.12%	-7.02%	13.64%
DRREDDY	1370.90	25.20	1.87%	12.96	178	1415	3.11%	1148	19.37%	8.52%	6.16%
EICHERMOT	7329.00	79.00	1.09%	3.18	233	8230	10.95%	5353	36.91%	2.79%	28.22%
ETERNAL	281.40	1.70	0.61%	368.72	1046	368	23.63%	213	32.36%	13.93%	7.88%
GRASIM	3193.00	23.80	0.75%	4.26	136	3219	0.82%	2503	27.59%	2.95%	13.32%
HCLTECH	1140.00	61.90	5.74%	127.67	1451	1780	35.96%	1030	10.68%	-3.31%	-33.41%
HDFCBANK	801.50	5.60	0.70%	258.67	2077	1021	21.46%	727	10.30%	6.35%	-19.33%
HDFCLIFE	568.00	-3.35	-0.59%	31.64	180	821	30.80%	543	4.60%	-1.11%	-27.72%
HINDALCO	953.50	4.30	0.45%	33.52	323	1176	18.92%	658	45.02%	-16.28%	37.62%
HINDUNILVR	2202.00	-8.60	-0.39%	15.36	339	2750	19.93%	2023	8.88%	5.33%	-4.82%
ICICIBANK	1412.70	12.70	0.91%	129.00	1822	1500	5.82%	1188	18.95%	13.74%	-0.93%
INDIGO	5421.50	-22.50	-0.41%	5.05	274	6233	13.01%	3895	39.18%	20.15%	-5.97%
INFY	1047.10	6.20	0.60%	116.51	1225	1728	39.40%	982	6.59%	-14.35%	-35.31%
ITC	290.10	0.20	0.07%	65.15	189	427	32.06%	275	5.47%	4.73%	-29.82%
JIOFIN	239.20	-0.53	-0.22%	88.43	212	339	29.36%	223	7.12%	1.77%	-26.41%
JSWSTEEL	1231.00	7.20	0.59%	11.53	142	1328	7.30%	1008	22.12%	-6.24%	17.68%
KOTAKBANK	396.95	-2.35	-0.59%	147.44	586	453	12.41%	346	14.89%	4.19%	-6.67%
LT	4027.70	-31.70	-0.78%	15.05	609	4440	9.29%	3288	22.49%	1.88%	12.41%
M&M	3137.60	-4.80	-0.15%	24.15	760	3840	18.29%	2896	8.34%	4.20%	-1.16%
MARUTI	14343.00	-5.00	-0.03%	3.84	554	17370	17.43%	12201	17.56%	9.96%	12.48%
MAXHEALTH	1150.10	24.70	2.19%	14.56	167	1314	12.49%	903	27.36%	19.11%	-11.63%
NESTLEIND	1455.00	8.80	0.61%	18.63	271	1498	2.88%	1085	34.14%	4.56%	21.84%
NTPC	356.20	-2.05	-0.57%	65.86	236	414	14.04%	316	12.88%	-2.89%	6.46%
ONGC	237.90	1.94	0.82%	110.82	264	308	22.63%	228	4.50%	-11.15%	-2.52%
POWERGRID	288.00	-0.20	-0.07%	102.59	297	325	11.37%	250	15.20%	1.03%	-1.94%
RELIANCE	1305.00	1.50	0.12%	78.37	1023	1612	19.03%	1253	4.13%	-0.62%	-14.02%
SBILIFE	1790.00	5.60	0.31%	6.31	113	2132	16.04%	1700	5.27%	0.33%	-1.12%
SBIN	1041.00	-10.60	-1.01%	104.39	1089	1235	15.69%	787	32.35%	7.27%	28.98%
SHRIRAMFIN	1061.80	1.10	0.10%	36.03	386	1108	4.17%	567	87.43%	16.30%	57.21%
SUNPHARMA	1907.00	36.00	1.92%	21.68	414	1925	0.94%	1548	23.19%	6.63%	13.53%
TATACONSUM	1111.20	4.00	0.36%	15.47	172	1283	13.37%	1007	10.33%	-2.87%	2.00%
TATASTEEL	190.10	2.43	1.29%	284.69	544	224	15.29%	153	24.65%	-10.28%	14.58%
TCS	2088.00	19.90	0.96%	40.27	846	3490	40.17%	1977	5.63%	-6.86%	-38.60%
TECHM	1407.10	21.80	1.57%	28.49	406	1854	24.10%	1304	7.90%	-4.43%	-15.84%
TITAN	4468.90	-12.20	-0.27%	5.42	243	4605	2.96%	3303	35.29%	9.30%	21.48%
TMPV	344.60	-1.35	-0.39%	126.50	435	740	53.41%	294	17.09%	-13.45%	-50.09%
TRENT	3333.00	15.20	0.46%	15.05	505	4174	20.15%	2184	52.63%	17.43%	-19.25%
ULTRACEMCO	11730.00	194.00	1.68%	1.58	185	13110	10.53%	10325	13.61%	5.67%	-5.39%
WIPRO	175.79	1.79	1.03%	295.22	522	273	35.63%	169	4.02%	-13.87%	-34.17%

## Disclaimer / Disclosures

### ANALYST CERTIFICATION

I, Mrs. Vaishali Parekh B.com, Research Analyst, author and the name subscribed to this report, hereby certify that all of the views expressed in this research report accurately reflect our views about the subject issuer(s) or securities. We also certify that no part of our compensation was, is, or will be directly or indirectly related to the specific recommendation(s) or view(s) in this report.

Terms & conditions and other disclosures:

Prabhudas Lilladher Pvt. Ltd, Mumbai, India (hereinafter referred to as "PL") is engaged in the business of Stock Broking, Portfolio Manager, Depository Participant and distribution for third party financial products. PL is a subsidiary of Prabhudas Lilladher Advisory Services Pvt Ltd. which has its various subsidiaries engaged in business of commodity broking, investment banking, financial services (margin funding) and distribution of third party financial/other products, details in respect of which are available at [www.plindia.com](http://www.plindia.com)

This document has been prepared by the Research Division of PL and is meant for use by the recipient only as information and is not for circulation. This document is not to be reported or copied or made available to others without prior permission of PL. It should not be considered or taken as an offer to sell or a solicitation to buy or sell any security.

The information contained in this report has been obtained from sources that are considered to be reliable. However, PL has not independently verified the accuracy or completeness of the same. Neither PL nor any of its affiliates, its directors or its employees accepts any responsibility of whatsoever nature for the information, statements and opinion given, made available or expressed herein or for any omission therein.

Recipients of this report should be aware that past performance is not necessarily a guide to future performance and value of investments can go down as well. The suitability or otherwise of any investments will depend upon the recipient's particular circumstances and, in case of doubt, advice should be sought from an independent expert/advisor.

Either PL or its affiliates or its directors or its employees or its representatives or its clients or their relatives may have position(s), make market, act as principal or engage in transactions of securities of companies referred to in this report and they may have used the research material prior to publication.

PL may from time to time solicit or perform investment banking or other services for any company mentioned in this document.

PL is registered as Research Analyst under Securities and Exchange Board of India (Research Analysts) Regulations, 2014 PL submits that no material disciplinary action has been taken on us by any Regulatory Authority impacting Equity Research Analysis activities.

PL or its research analysts or its associates or his relatives do not have any financial interest in the subject company.

PL or its research analysts or its associates or his relatives do not have actual/beneficial ownership of one per cent or more securities of the subject company at the end of the month immediately preceding the date of publication of the research report.

PL or its research analysts or its associates or his relatives do not have any material conflict of interest at the time of publication of the research report.

PL or its associates might have received compensation from the subject company in the past twelve months.

PL or its associates might have managed or co-managed public offering of securities for the subject company in the past twelve months or mandated by the subject company for any other assignment in the past twelve months.

PL or its associates might have received any compensation for investment banking or merchant banking or brokerage services from the subject company in the past twelve months.

PL or its associates might have received any compensation for products or services other than investment banking or merchant banking or brokerage services from the subject company in the past twelve months PL or its associates might have received any compensation or other benefits from the subject company or third party in connection with the research report.

PL encourages independence in research report preparation and strives to minimize conflict in preparation of research report. PL or its analysts did not receive any compensation or other benefits from the subject Company or third party in connection with the preparation of the research report. PL or its Research Analysts do not have any material conflict of interest at the time of publication of this report.

It is confirmed that Mrs. Vaishali Parekh B.com, Research Analyst of this report has not received any compensation from the companies mentioned in the report in the preceding twelve months compensation of our Research Analysts is not based on any specific merchant banking, investment banking or brokerage service transactions.

The Research analysts for this report certifies that all of the views expressed in this report accurately reflect his or her personal views about the subject company or companies and its or their securities, and no part of his or her compensation was, is or will be, directly or indirectly related to specific recommendations or views expressed in this report.

The research analysts for this report has not served as an officer, director or employee of the subject company PL or its research analysts have not engaged in market making activity for the subject company

Our sales people, traders, and other professionals or affiliates may provide oral or written market commentary or trading strategies to our clients that reflect opinions that are contrary to the opinions expressed herein, and our proprietary trading and investing businesses may make investment decisions that are inconsistent with the recommendations expressed herein. In reviewing these materials, you should be aware that any or all of the foregoing, among other things, may give rise to real or potential conflicts of interest.

PL and its associates, their directors and employees may (a) from time to time, have a long or short position in, and buy or sell the securities of the subject company or (b) be engaged in any other transaction involving such securities and earn brokerage or other compensation or act as a market maker in the financial instruments of the subject company or act as an advisor or lender/borrower to the subject company or may have any other potential conflict of interests with respect to any recommendation and other related information and opinions.

**Regd. Office:** 3<sup>rd</sup> Floor, Sadhana House, 570, P. B. Marg, Behind Mahindra Tower, Worli, Mumbai - 400 018, India.