

* Sensex 78180.72 - 104.35

* Nifty 24398.70 - 31.65

* Bank Nifty 58200.70 - 90.80

Market Preview

Nifty consolidates near the 24400 zone

Nifty sustaining the positive bias hovered near the 24400 level with bias maintained with a cautiously positive approach expecting for further rise in the coming sessions. BankNifty continue to remain rangebound and with consolidation visible has sustained the positive bias anticipating for further upward move. The market breadth was slightly weak with the advance decline indicating a ratio of 2:3 at close.

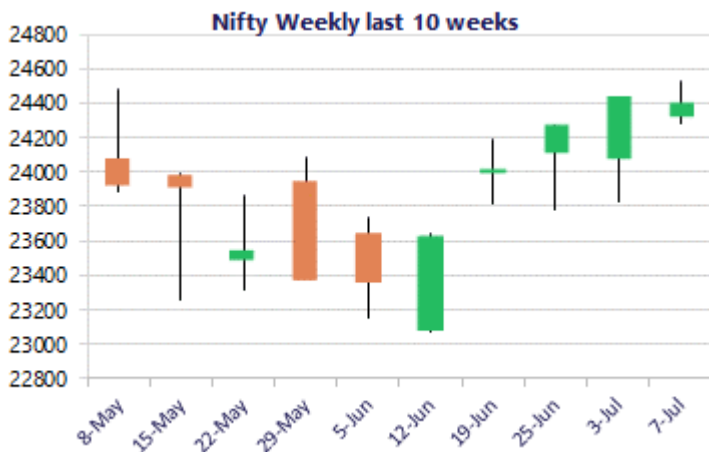
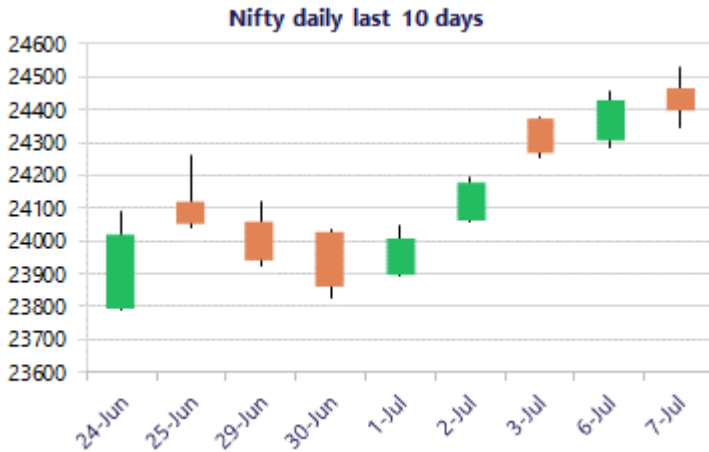
Market Forecast

Nifty daily range 24300 - 24600

Nifty sustained above the 24400 zone for most part of the session with some profit booking witnessed in the final hours to end just below the 24400 level with bias maintained with a cautiously positive approach and would need to sustain the near-term support of 24300 zone to maintain the overall bias intact. On the upside, once the 24350 zone is sustained and stability is confirmed, then one can expect for fresh upside targets of 24800 and 25400 levels in the coming days.

BankNifty once again witnessed a strong resistance near the 58500 zone and witnessed some profit booking to end near the 58200 level with overall consolidation visible for index for quite some time. As mentioned earlier, the index would need a decisive breakout above the 58500 level to trigger for fresh upward move in the coming days with bias maintained positive, while on the downside, it would have the important support near the 200-period MA at 57200 level which needs to be sustained as of now.

The support for the day is seen at 24300 levels, while the resistance is seen at 24600 levels. BankNifty would have the daily range of 57700-59000 levels.



*Blue candle → Close rate > Open rate * Red candle → Close rate < Open rate

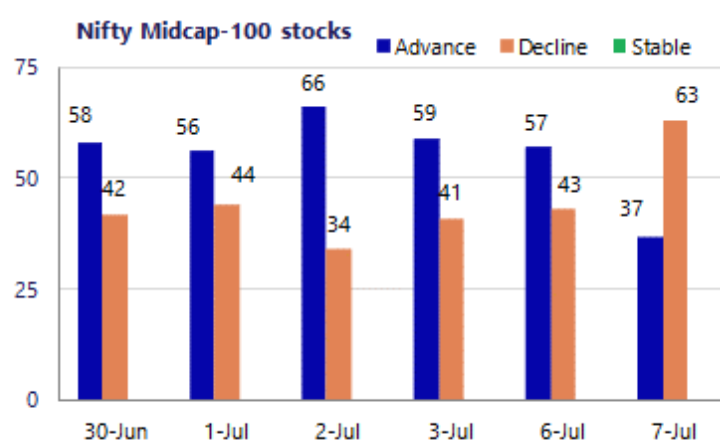
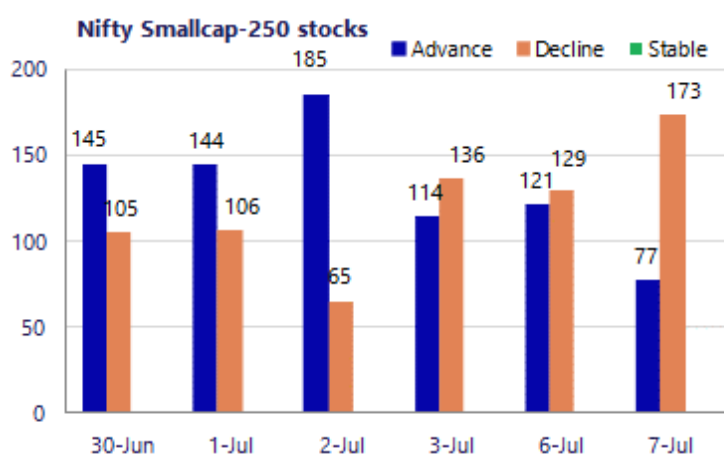
Sensex	Period	Closing	% Chng	Trend	Reversal	2 Sup	1 Sup	Pivot	1 Res	2 Res
Nifty	Daily	24398.70	-0.13%	4	24255.80	24244	24321	24426	24503	24608
	Weekly	24270.85	0.89%	3	23597.45	23612	23941	24159	24488	24705
	Monthly	23865.75	1.35%	-6	24660.55	22541	23203	23733	24395	24924
Bank Nifty	Daily	58200.70	-0.16%	2	58137.20	57826	58014	58297	58485	58768
	Weekly	57938.50	-0.41%	3	55666.90	57026	57482	57913	58369	58799
	Monthly	57542.90	6.09%	-4	59050.45	50746	54145	56425	59824	62104
Sensex	Daily	78180.72	-0.13%	4	77751.00	77658	77920	78292	78553	78926
	Weekly	77763.91	0.86%	3	74867.00	75975	76869	77224	78119	78474
	Monthly	76478.67	2.28%	-6	78980.70	71383	73931	75867	78415	80351

Gainers - Losers (Nifty 500 Stocks)
Gainers

Company Name	Last Price	% Gain	Volume
Aegis Vopak	294.32	5.13%	275
Havells India	1,225.00	3.68%	1182
Gland	2550	3.52%	2484.3
Belrise Ind	229.97	3.45%	223
Blue Jet	579.15	3.06%	576.9
HCL Tech	1,168.20	3.00%	1135
Ceat	3,915.00	2.92%	3810

Losers

Company Name	Last Price	% Loss	Volume
Aditya Birla F	59.63	-4.49%	62.55
ACME Solar	367.15	-4.31%	384
Biocon	406.90	-4.10%	425
Bank of Mah	83.19	-3.84%	86.89
Billionbrains G	193.08	-3.54%	200.3
Acutaas Chem	3391	-3.52%	3515
Adani Enterpris	3107.2	-3.10%	3209.9



Nifty Daily chart with RSI indicator



BankNifty Daily chart with RSI indicator



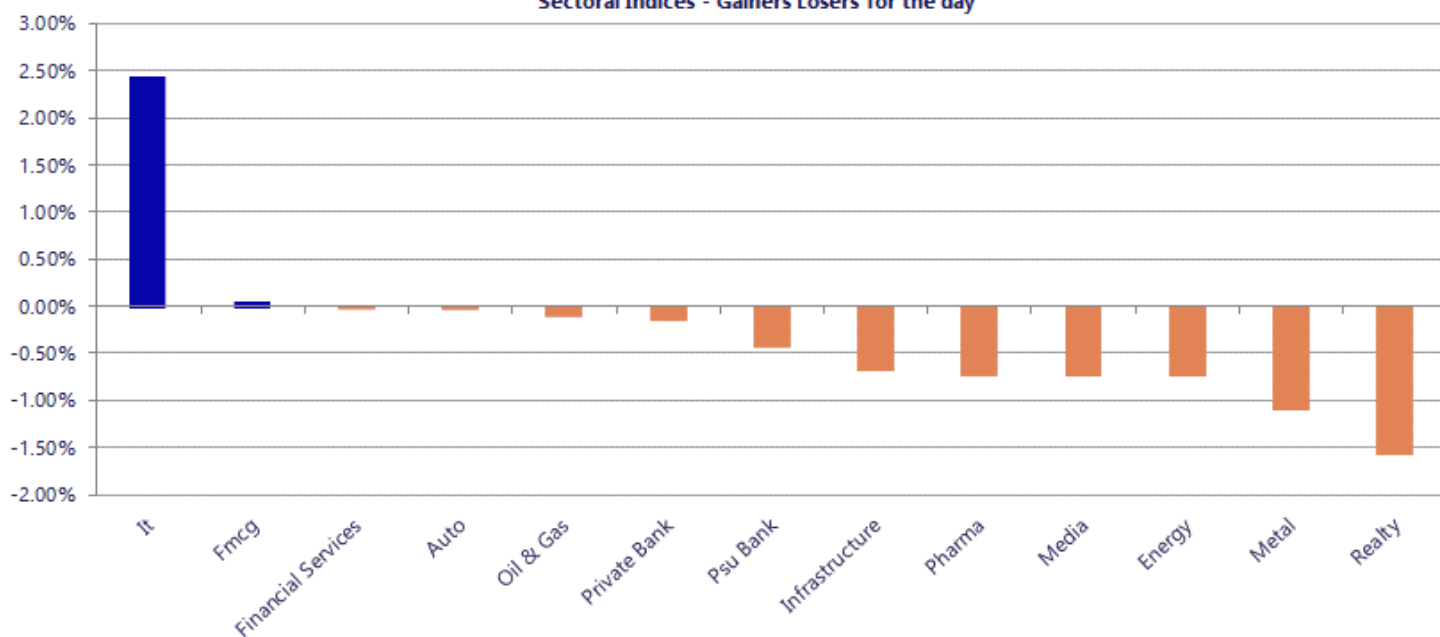
Breakouts - Cross above 200 DMA			
Company Name	LCP	Change %	200 DMA
Share India	164.91	10.47	149.28
RITES	235.43	4.33	225.65
EPM	88.62	3.06	85.99
Service Care	53.5	2.27	52.31
Bal Pharma	79.17	2.18	77.48
Borana Weaves	314.8	2.05	308.47
Lancor Holdings	25.12	1.74	24.69
Indbank Merchan	35.78	1.73	35.17
Diamines Chem	269.47	1.65	265.1
MA Nifty Intern	13.29	1.14	13.14
Sree Rayalaseem	510.85	1.11	505.22
ITC Hotels	186.79	0.92	185.09
Reliance Chemo	134.83	0.66	133.94
HDFC Nifty Low	20.77	0.39	20.69
Torrent Power	1399.7	0.36	1394.7
Soma Textile	107.02	0.29	106.71
Neptune Petroch	189.8	0.29	189.26
Ipru Nifty 100	22.24	0.14	22.21

* Stocks crossing above its Simple Moving Average (200DMA)

Breakdown - Cross below 200 DMA			
Company Name	LCP	Change %	200 DMA
V-Marc	289.85	-63.93	803.62
Digitide Soluti	108.5	-8.98	119.2
Laxmi India Fin	113.63	-4.64	119.16
Imagicaaworld	46.55	-2.98	47.98
Platinum Indust	237.28	-2.66	243.77
Indian Hume	346.8	-2.63	356.16
Vishnusurya Pro	161.3	-2.57	165.55
Sandur Manganes	204.24	-2.26	208.97
Emmbi Ind	91.31	-2.14	93.31
Subros	826.6	-1.98	843.27
Axiscades Tech	1539	-1.98	1570.02
Jayant Agro-Org	202.11	-1.64	205.49
Mukand	131.24	-1.22	132.86
Mazagon	2523.2	-1.13	2551.92
Tatva Chintan	1240.3	-1.09	1253.92
Hemisphere	138.24	-1.06	139.72
JSW Dulux	3107.2	-1.00	3138.44
Federal-Mogul	452.75	-0.86	456.68

* Stocks crossing below its Simple Moving Average (200DMA)

Sectoral Indices - Gainers Losers for the day



Nifty 50 Stocks - Summary Details											
Symbol	LTP	Chng	% Chng	Volume (lacs)	Turnover (crs.)	52w High	Diff with 52w H	52w Low	Diff with 52w L	365 days % chng	30 days % chng
NIFTY 50	24398.70	-31.65	-0.13%	4125.98	36435	26373	7.49%	22183	9.99%	4.42%	-4.17%
ADANIENT	3109.90	-96.70	-3.02%	20.93	659	3245	4.16%	1753	77.40%	2.02%	24.34%
ADANIPTS	1831.00	-33.40	-1.79%	18.18	338	1891	3.18%	1291	41.88%	0.37%	27.54%
APOLLOHOSP	8830.00	-58.50	-0.66%	1.89	168	8950	1.34%	6697	31.86%	6.33%	15.94%
ASIANPAINT	2730.20	-24.70	-0.90%	4.89	134	2986	8.56%	2115	29.09%	1.62%	11.77%
AXISBANK	1336.20	-3.40	-0.25%	61.99	834	1418	5.79%	1043	28.17%	5.02%	13.71%
BAJAJ-AUTO	10105.00	68.50	0.68%	1.73	175	10834	6.73%	7859	28.59%	-2.29%	19.40%
BAJAJFINSV	1885.90	15.20	0.81%	8.78	166	2195	14.08%	1597	18.09%	10.73%	-6.01%
BAJFINANCE	1039.40	10.30	1.00%	91.01	946	1103	5.72%	788	31.92%	16.87%	12.41%
BEL	417.40	-8.15	-1.92%	78.22	329	473	11.84%	361	15.56%	2.25%	0.07%
BHARTIARTL	1922.70	-3.00	-0.16%	57.67	1116	2175	11.58%	1741	10.47%	6.92%	-5.47%
CIPLA	1451.20	-21.10	-1.43%	11.65	171	1673	13.26%	1166	24.49%	3.56%	-3.93%
COALINDIA	427.55	-4.80	-1.11%	53.15	228	491	12.97%	369	15.98%	-9.47%	11.27%
DRREDDY	1354.40	-13.50	-0.99%	10.44	142	1415	4.28%	1148	17.94%	5.96%	3.35%
EICHERMOT	7533.50	62.00	0.83%	5.92	448	8230	8.46%	5353	40.73%	6.56%	32.57%
ETERNAL	289.30	5.90	2.08%	453.04	1307	368	21.48%	213	36.08%	12.79%	11.89%
GRASIM	3174.00	-39.00	-1.21%	5.72	183	3222	1.49%	2503	26.83%	2.79%	14.21%
HCLTECH	1170.00	35.80	3.16%	51.79	602	1780	34.27%	1030	13.59%	1.33%	-31.59%
HDFCBANK	827.50	-2.35	-0.28%	576.10	4805	1021	18.91%	727	13.88%	10.77%	-16.73%
HDFCLIFE	572.75	8.55	1.52%	25.85	147	821	30.22%	543	5.48%	-0.44%	-27.45%
HINDALCO	967.20	-13.20	-1.35%	44.12	428	1176	17.76%	658	47.10%	-11.48%	39.75%
HINDUNILVR	2203.10	1.10	0.05%	25.52	563	2750	19.89%	2023	8.93%	3.85%	-8.60%
ICICIBANK	1412.00	-14.90	-1.04%	156.64	2226	1500	5.87%	1188	18.90%	11.88%	-1.65%
INDIGO	5398.00	-10.50	-0.19%	5.11	275	6233	13.39%	3895	38.58%	20.46%	-6.09%
INFY	1071.90	29.70	2.85%	188.65	2028	1728	37.97%	982	9.11%	-10.49%	-34.12%
ITC	288.00	-0.25	-0.09%	184.90	534	427	32.55%	275	4.71%	2.60%	-30.79%
JIOFIN	243.00	3.00	1.25%	230.65	561	339	28.23%	223	8.82%	2.58%	-25.93%
JSWSTEEL	1237.40	1.30	0.11%	25.49	317	1328	6.82%	1008	22.76%	-3.63%	18.68%
KOTAKBANK	382.15	0.85	0.22%	232.17	885	453	15.68%	346	10.61%	1.25%	-11.12%
LT	3987.00	-54.00	-1.34%	24.42	976	4440	10.20%	3288	21.26%	0.86%	11.33%
M&M	3182.50	-18.70	-0.58%	24.27	776	3840	17.12%	2896	9.89%	4.67%	0.71%
MARUTI	14528.00	72.00	0.50%	5.25	762	17370	16.36%	12201	19.07%	11.33%	16.04%
MAXHEALTH	1115.30	-17.20	-1.52%	20.61	233	1314	15.14%	903	23.51%	14.13%	-14.18%
NESTLEIND	1466.90	-6.80	-0.46%	18.12	266	1498	2.08%	1085	35.24%	5.82%	21.13%
NTPC	352.90	-3.35	-0.94%	81.49	289	414	14.84%	316	11.84%	-2.42%	4.58%
ONGC	243.47	-0.43	-0.18%	152.87	373	308	20.82%	228	6.95%	-8.04%	0.81%
POWERGRID	283.65	-1.75	-0.61%	72.51	207	325	12.71%	250	13.46%	-0.70%	-4.14%
RELIANCE	1305.00	-16.30	-1.23%	143.35	1884	1612	19.03%	1253	4.13%	1.08%	-15.34%
SBILIFE	1835.00	47.30	2.65%	17.02	312	2132	13.93%	1700	7.92%	2.93%	1.48%
SBIN	1036.20	-1.50	-0.14%	110.53	1152	1235	16.08%	787	31.74%	5.98%	28.43%
SHRIRAMFIN	1062.90	0.60	0.06%	83.57	898	1108	4.07%	567	87.63%	15.12%	58.33%
SUNPHARMA	1902.70	-5.10	-0.27%	20.61	394	1925	1.16%	1548	22.91%	6.76%	13.26%
TATACONSUM	1121.10	3.20	0.29%	14.24	159	1283	12.60%	1007	11.31%	-0.87%	1.74%
TATASTEEL	189.60	-1.27	-0.67%	228.01	433	224	15.51%	153	24.32%	-8.30%	16.75%
TCS	2095.90	38.30	1.86%	47.69	1001	3490	39.94%	1977	6.02%	-4.68%	-38.57%
TECHM	1447.00	40.50	2.88%	40.67	588	1854	21.95%	1304	10.96%	-2.46%	-10.89%
TITAN	4591.20	106.80	2.38%	33.86	1556	4656	1.39%	3303	39.00%	7.77%	25.23%
TMPV	341.95	-5.10	-1.47%	74.26	255	740	53.77%	294	16.19%	-14.04%	-50.36%
TRENT	2921.00	-422.80	-12.64%	90.58	2704	4174	30.02%	2184	33.77%	5.29%	-20.32%
ULTRACEMCO	11620.00	-41.00	-0.35%	1.52	178	13110	11.37%	10325	12.54%	6.49%	-5.87%
WIPRO	173.00	-1.32	-0.76%	188.34	328	273	36.65%	169	2.37%	-12.79%	-35.39%

Disclaimer / Disclosures

ANALYST CERTIFICATION

I, Mrs. Vaishali Parekh B.com, Research Analyst, author and the name subscribed to this report, hereby certify that all of the views expressed in this research report accurately reflect our views about the subject issuer(s) or securities. We also certify that no part of our compensation was, is, or will be directly or indirectly related to the specific recommendation(s) or view(s) in this report.

Terms & conditions and other disclosures:

Prabhudas Lilladher Pvt. Ltd, Mumbai, India (hereinafter referred to as "PL") is engaged in the business of Stock Broking, Portfolio Manager, Depository Participant and distribution for third party financial products. PL is a subsidiary of Prabhudas Lilladher Advisory Services Pvt Ltd. which has its various subsidiaries engaged in business of commodity broking, investment banking, financial services (margin funding) and distribution of third party financial/other products, details in respect of which are available at www.plindia.com

This document has been prepared by the Research Division of PL and is meant for use by the recipient only as information and is not for circulation. This document is not to be reported or copied or made available to others without prior permission of PL. It should not be considered or taken as an offer to sell or a solicitation to buy or sell any security.

The information contained in this report has been obtained from sources that are considered to be reliable. However, PL has not independently verified the accuracy or completeness of the same. Neither PL nor any of its affiliates, its directors or its employees accepts any responsibility of whatsoever nature for the information, statements and opinion given, made available or expressed herein or for any omission therein.

Recipients of this report should be aware that past performance is not necessarily a guide to future performance and value of investments can go down as well. The suitability or otherwise of any investments will depend upon the recipient's particular circumstances and, in case of doubt, advice should be sought from an independent expert/advisor.

Either PL or its affiliates or its directors or its employees or its representatives or its clients or their relatives may have position(s), make market, act as principal or engage in transactions of securities of companies referred to in this report and they may have used the research material prior to publication.

PL may from time to time solicit or perform investment banking or other services for any company mentioned in this document.

PL is registered as Research Analyst under Securities and Exchange Board of India (Research Analysts) Regulations, 2014 PL submits that no material disciplinary action has been taken on us by any Regulatory Authority impacting Equity Research Analysis activities.

PL or its research analysts or its associates or his relatives do not have any financial interest in the subject company.

PL or its research analysts or its associates or his relatives do not have actual/beneficial ownership of one per cent or more securities of the subject company at the end of the month immediately preceding the date of publication of the research report.

PL or its research analysts or its associates or his relatives do not have any material conflict of interest at the time of publication of the research report.

PL or its associates might have received compensation from the subject company in the past twelve months.

PL or its associates might have managed or co-managed public offering of securities for the subject company in the past twelve months or mandated by the subject company for any other assignment in the past twelve months.

PL or its associates might have received any compensation for investment banking or merchant banking or brokerage services from the subject company in the past twelve months.

PL or its associates might have received any compensation for products or services other than investment banking or merchant banking or brokerage services from the subject company in the past twelve months PL or its associates might have received any compensation or other benefits from the subject company or third party in connection with the research report.

PL encourages independence in research report preparation and strives to minimize conflict in preparation of research report. PL or its analysts did not receive any compensation or other benefits from the subject Company or third party in connection with the preparation of the research report. PL or its Research Analysts do not have any material conflict of interest at the time of publication of this report.

It is confirmed that Mrs. Vaishali Parekh B.com, Research Analyst of this report has not received any compensation from the companies mentioned in the report in the preceding twelve months compensation of our Research Analysts is not based on any specific merchant banking, investment banking or brokerage service transactions.

The Research analysts for this report certifies that all of the views expressed in this report accurately reflect his or her personal views about the subject company or companies and its or their securities, and no part of his or her compensation was, is or will be, directly or indirectly related to specific recommendations or views expressed in this report.

The research analysts for this report has not served as an officer, director or employee of the subject company PL or its research analysts have not engaged in market making activity for the subject company

Our sales people, traders, and other professionals or affiliates may provide oral or written market commentary or trading strategies to our clients that reflect opinions that are contrary to the opinions expressed herein, and our proprietary trading and investing businesses may make investment decisions that are inconsistent with the recommendations expressed herein. In reviewing these materials, you should be aware that any or all of the foregoing, among other things, may give rise to real or potential conflicts of interest.

PL and its associates, their directors and employees may (a) from time to time, have a long or short position in, and buy or sell the securities of the subject company or (b) be engaged in any other transaction involving such securities and earn brokerage or other compensation or act as a market maker in the financial instruments of the subject company or act as an advisor or lender/borrower to the subject company or may have any other potential conflict of interests with respect to any recommendation and other related information and opinions.

Regd. Office: 3rd Floor, Sadhana House, 570, P. B. Marg, Behind Mahindra Tower, Worli, Mumbai - 400 018, India.