

* Sensex 76503.60 - 1677.12

* Nifty 23882.05 - 516.65

* Bank Nifty 56742.60 - 1458.10

Market Preview

Nifty crashes below the 24000 zone

Nifty witnessed heavy profit booking and tanked heavily moving below the 24000 zone with the geo-political tensions once again triggered and sentiment getting into tense mode. BankNifty crashed below the 200 period MA at 57200 level and with bias getting weaker closed near the 56700 zone expecting for further slide in the coming sessions. The market breadth was very weak with the advance decline indicating a ratio of 1:5 at close.

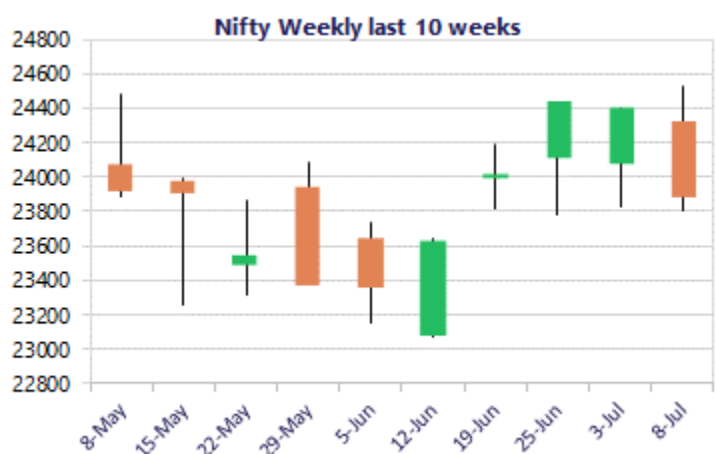
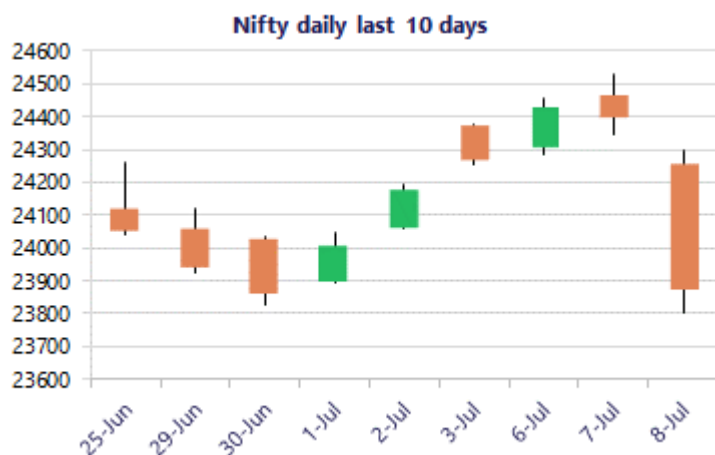
Market Forecast

Nifty daily range 23700 - 24200

Nifty after a weak gap down opening, further crashed heavily post the lunch session breaching below the 24000 zone and closed near the 23900 level with bias and sentiment once again turning into a very cautious mode with the geo-political tensions once again triggered amid the middle east. The index would have the important near-term support at 23800 zone failing which there can be intensified selling pressure with pessimism creeping in and having the next major support positioned near the 23000 zone.

BankNifty after finding resistance near the 58500 zone, tanked heavily with a huge bearish candle visible on the daily chart moving below the important 200 period MA at 57200 zone with bias weakening and sentiment once again precariously. The index would have the near-term support at 56400 level which needs to be sustained, failing which the trend would turn slightly weak and can expect for further slide having the major and crucial support near 53500 level for the coming days.

The support for the day is seen at 23700 levels, while the resistance is seen at 24200 levels. BankNifty would have the daily range of 55500-57400 levels.



*Blue candle → Close rate > Open rate * Red candle → Close rate < Open rate

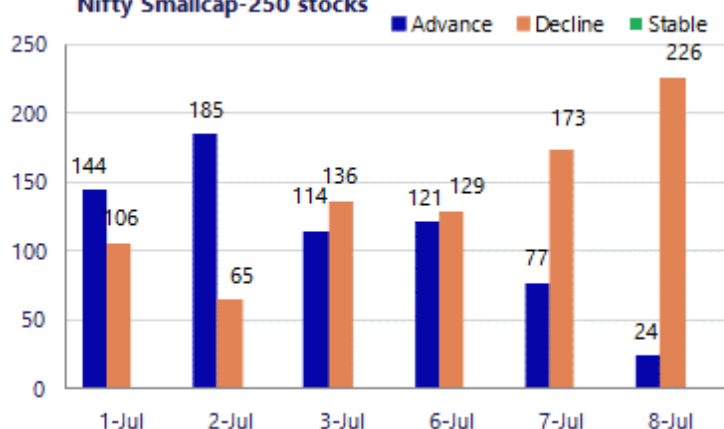
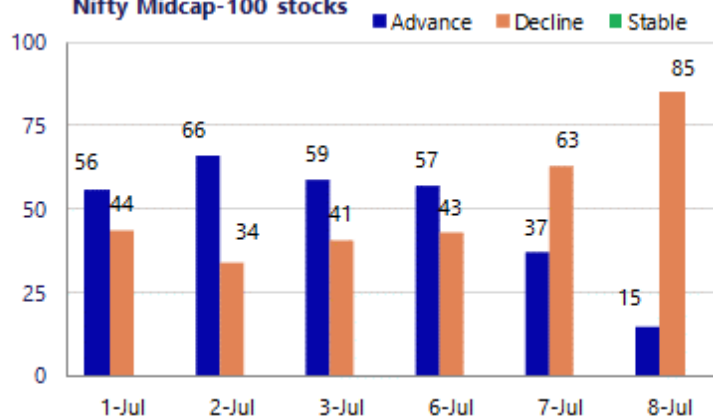
Sensex	Period	Closing	% Chng	Trend	Reversal	2 Sup	1 Sup	Pivot	1 Res	2 Res
Nifty	Daily	23882.05	-2.12%	-1	24324.05	23501	23692	23996	24186	24491
	Weekly	24270.85	0.89%	3	23597.45	23612	23941	24159	24488	24705
	Monthly	23865.75	1.35%	-6	24660.55	22541	23203	23733	24395	24924
Bank Nifty	Daily	56742.60	-2.51%	-1	58541.40	55596	56169	57123	57696	58649
	Weekly	57938.50	-0.41%	3	55666.90	57026	57482	57913	58369	58799
	Monthly	57542.90	6.09%	-4	59050.45	50746	54145	56425	59824	62104
Sensex	Daily	76503.60	-2.15%	-1	78025.90	75279	75891	76871	77484	78463
	Weekly	77763.91	0.86%	3	74867.00	75975	76869	77224	78119	78474
	Monthly	76478.67	2.28%	-6	78980.70	71383	73931	75867	78415	80351

Gainers - Losers (Nifty 500 Stocks)
Gainers

Company Name	Last Price	% Gain	Volume
Ather Energy	1200	5.21%	1140.5
Chennai Petro	1,109.90	2.19%	1086.1
Acutaas Chem	3454.5	1.87%	503455
Exide Ind	421.35	1.65%	412.35
BSE Limited	3,739.10	1.51%	3640
Bharti Hexacom	1,519.90	1.31%	1494
Anant Raj	544.75	1.24%	532

Losers

Company Name	Last Price	% Loss	Volume
Aegis Logistics	1,245.40	-9.99%	1364.8
Aegis Vopak	276.61	-6.02%	288.4
Bank of India	135.12	-5.12%	141.73
360 ONE WAM	1,091.70	-5.08%	2679512
Apar Ind	13,443.00	-5.02%	14101
Force Motors	17864	-4.87%	18590
AB Capital	385.75	-4.85%	401.4

Nifty Smallcap-250 stocks

Nifty Midcap-100 stocks


Nifty Daily chart with RSI indicator



BankNifty Daily chart with RSI indicator

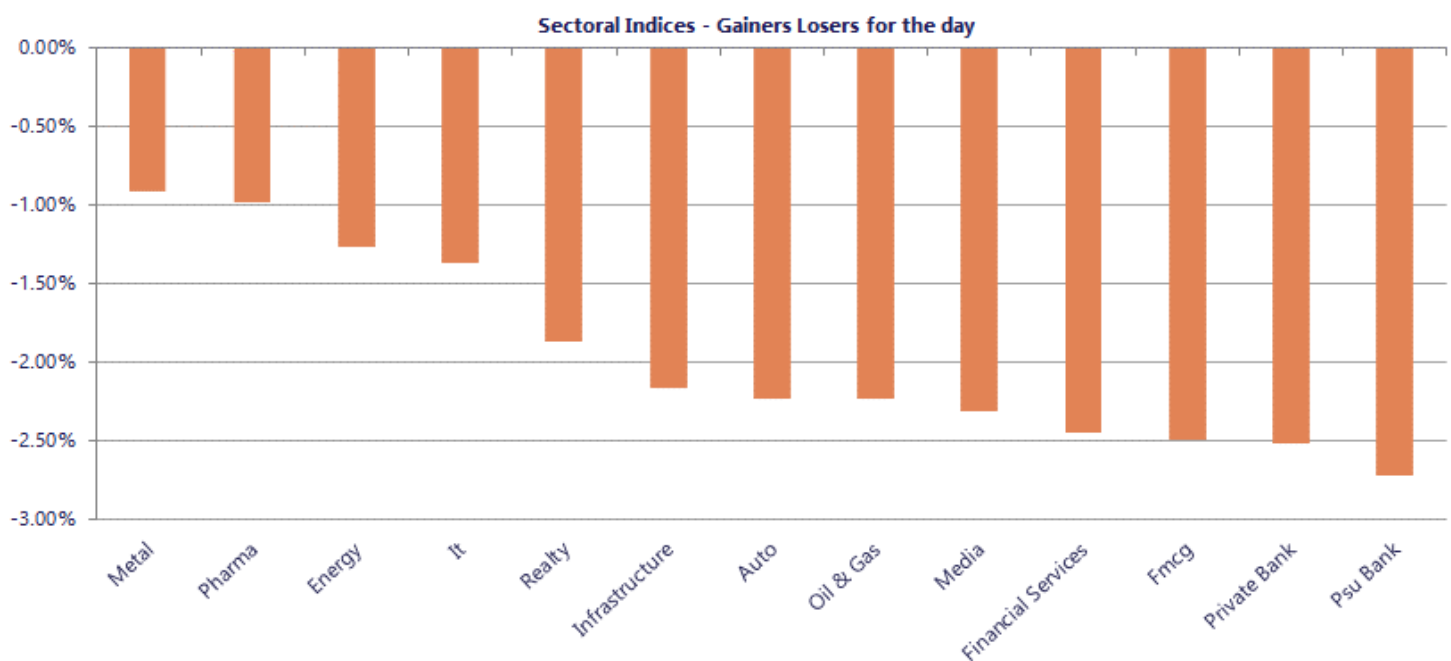


Breakouts - Cross above 200 DMA			
Company Name	LCP	Change %	200 DMA
Jindal Drilling	601.05	9.68	548
Indian Card	240.9	5.65	228.01
Konstelec	50.8	4.61	48.56
Orient Abrasive	41.52	2.72	40.42
TCI Finance	16.3	2.52	15.9
GRP	1898.2	1.27	1874.43
Dr Agarwals	477.85	1.05	472.9
Frog Innovation	172	0.52	171.11
Info Edge	1179	0.38	1174.55
Jayant Agro-Org	205.93	0.31	205.29
Deep Ind	449.6	0.24	448.52
TSF Investments	466.65	0.20	465.71

Breakdown - Cross below 200 DMA			
Company Name	LCP	Change %	200 DMA
Texmaco Rail	111.52	-6.09	118.75
Barak Vally Cem	41.42	-5.58	43.87
Sejal Glass	709.3	-4.58	743.34
Beardsell	27.54	-4.54	28.85
Motisons Jewell	14.09	-4.28	14.72
PCBL Chemical	297	-4.20	310.02
Indbank Merchan	33.77	-4.04	35.19
Soma Textile	102.55	-4.01	106.83
ITC Hotels	177.63	-3.87	184.79
Kanpur Plast	187.84	-3.69	195.04
Wealth First Po	954.5	-3.21	986.15
Borana Weaves	299.15	-3.17	308.95
SMC Global Secu	68.8	-3.13	71.02
Scoda Tubes	144.24	-3.13	148.9
Marvel Decor Lt	71.35	-3.08	73.62
Tamilnadu Petro	94.56	-3.00	97.48
BEML	1776.2	-2.97	1830.52
SRF	2709.5	-2.95	2791.93

* Stocks crossing above its Simple Moving Average (200DMA)

* Stocks crossing below its Simple Moving Average (200DMA)



Nifty 50 Stocks - Summary Details											
Symbol	LTP	Chng	% Chng	Volume (lacs)	Turnover (crs.)	52w High	Diff with 52w H	52w Low	Diff with 52w L	365 days % chng	30 days % chng
NIFTY 50	23882.05	-516.65	-2.12%	4204.57	32936	26373	9.45%	22183	7.66%	3.28%	-6.43%
ADANIENT	3055.00	-52.20	-1.68%	23.21	715	3245	5.86%	1753	74.27%	2.86%	21.43%
ADANIPTS	1800.90	-33.00	-1.80%	14.14	256	1891	4.77%	1291	39.55%	-0.23%	24.33%
APOLLOHOSP	8750.00	-87.00	-0.98%	2.76	242	8950	2.23%	6697	30.67%	4.68%	15.66%
ASIANPAINT	2667.00	-64.40	-2.36%	14.82	397	2986	10.67%	2115	26.10%	0.29%	7.34%
AXISBANK	1311.50	-29.50	-2.20%	69.17	915	1418	7.53%	1043	25.80%	3.42%	12.54%
BAJAJ-AUTO	10175.00	65.50	0.65%	2.49	253	10834	6.08%	7859	29.48%	-0.55%	22.01%
BAJAJFINSV	1854.00	-31.30	-1.66%	14.40	268	2195	15.54%	1597	16.09%	10.71%	-8.14%
BAJFINANCE	1011.20	-31.30	-3.00%	83.14	848	1103	8.28%	788	28.34%	16.08%	9.01%
BEL	408.20	-10.95	-2.61%	128.38	528	473	13.78%	361	13.01%	-1.15%	-3.27%
BHARTIARTL	1885.50	-40.30	-2.09%	61.89	1175	2175	13.29%	1741	8.33%	3.98%	-7.12%
CIPLA	1431.00	-20.80	-1.43%	11.64	169	1673	14.47%	1166	22.76%	3.11%	-3.85%
COALINDIA	430.65	1.70	0.40%	36.86	158	491	12.34%	369	16.82%	-7.37%	12.49%
DRREDDY	1351.10	-3.50	-0.26%	15.62	212	1415	4.51%	1148	17.65%	5.92%	5.24%
EICHERMOT	7437.50	-98.50	-1.31%	9.05	673	8230	9.63%	5353	38.94%	5.50%	30.95%
ETERNAL	287.30	-2.10	-0.73%	585.53	1699	368	22.02%	213	35.14%	15.71%	9.03%
GRASIM	3149.50	-41.40	-1.30%	4.78	150	3222	2.25%	2503	25.85%	3.26%	11.65%
HCLTECH	1143.30	-24.90	-2.13%	30.91	358	1780	35.77%	1030	11.00%	-0.69%	-33.07%
HDFCBANK	809.30	-20.00	-2.41%	387.51	3185	1021	20.70%	727	11.37%	9.56%	-19.13%
HDFCLIFE	556.50	-15.95	-2.79%	32.50	184	821	32.20%	543	2.49%	-1.43%	-29.93%
HINDALCO	973.55	4.05	0.42%	65.47	637	1176	17.22%	658	48.07%	-8.36%	42.00%
HINDUNILVR	2134.60	-74.20	-3.36%	13.27	286	2750	22.38%	2023	5.54%	1.16%	-10.79%
ICICIBANK	1383.10	-31.60	-2.23%	105.73	1477	1500	7.79%	1188	16.46%	10.63%	-4.08%
INDIGO	5120.00	-275.00	-5.10%	20.44	1063	6233	17.85%	3895	31.44%	17.44%	-11.75%
INFY	1069.00	-2.80	-0.26%	130.21	1394	1728	38.14%	982	8.82%	-9.99%	-34.77%
ITC	280.85	-7.90	-2.74%	215.93	611	427	34.23%	275	2.11%	0.50%	-32.68%
JIOFIN	230.86	-12.21	-5.02%	372.77	869	339	31.82%	223	3.39%	0.87%	-29.80%
JSWSTEEL	1223.10	-23.30	-1.87%	10.39	128	1328	7.90%	1008	21.34%	-2.98%	17.04%
KOTAKBANK	370.45	-11.25	-2.95%	225.17	841	453	18.26%	346	7.22%	-1.76%	-16.73%
LT	3900.10	-91.80	-2.30%	22.52	885	4440	12.16%	3288	18.61%	0.63%	8.14%
M&M	3103.50	-92.90	-2.91%	29.34	923	3840	19.18%	2896	7.17%	4.64%	-1.72%
MARUTI	13974.00	-564.00	-3.88%	4.81	682	17370	19.55%	12201	14.53%	8.22%	12.57%
MAXHEALTH	1084.40	-34.00	-3.04%	19.71	216	1314	17.49%	903	20.09%	7.64%	-16.31%
NESTLEIND	1445.60	-26.20	-1.78%	18.56	271	1498	3.50%	1085	33.27%	3.34%	19.57%
NTPC	348.75	-5.45	-1.54%	95.72	335	414	15.84%	316	10.52%	-3.77%	1.62%
ONGC	247.00	2.82	1.15%	247.28	607	308	19.67%	228	8.50%	-6.67%	1.55%
POWERGRID	279.70	-4.65	-1.64%	73.06	206	325	13.93%	250	11.88%	-3.65%	-6.06%
RELIANCE	1274.90	-33.50	-2.56%	199.59	2563	1612	20.90%	1253	1.73%	0.92%	-17.09%
SBILIFE	1785.40	-46.90	-2.56%	13.65	248	2132	16.26%	1700	5.00%	1.19%	-1.73%
SBIN	1019.80	-18.30	-1.76%	141.41	1451	1235	17.41%	787	29.65%	3.85%	25.49%
SHRIRAMFIN	1015.00	-51.80	-4.86%	65.36	673	1108	8.39%	567	79.17%	13.20%	51.73%
SUNPHARMA	1888.00	-15.40	-0.81%	27.86	530	1930	2.15%	1548	21.96%	5.55%	12.88%
TATACONSUM	1090.00	-35.00	-3.11%	15.18	167	1283	15.02%	1007	8.22%	-1.54%	-0.90%
TATASTEEL	188.47	-1.32	-0.70%	178.17	336	224	16.01%	153	23.58%	-7.03%	16.36%
TCS	2059.60	-36.50	-1.74%	36.66	762	3490	40.98%	1977	4.19%	-4.27%	-39.53%
TECHM	1426.00	-21.50	-1.49%	14.89	214	1854	23.09%	1304	9.35%	-5.15%	-12.80%
TITAN	4580.00	-24.20	-0.53%	10.46	480	4656	1.63%	3303	38.66%	9.25%	33.09%
TMPV	332.35	-9.95	-2.91%	107.89	363	740	55.07%	294	12.93%	-14.56%	-52.06%
TRENT	2922.00	-5.80	-0.20%	27.38	803	4174	30.00%	2184	33.81%	7.26%	-19.43%
ULTRACEMCO	11380.00	-269.00	-2.31%	2.14	244	13110	13.20%	10325	10.22%	5.42%	-8.56%
WIPRO	172.94	-0.06	-0.03%	164.81	287	273	36.68%	169	2.33%	-4.85%	-35.87%

Disclaimer / Disclosures

ANALYST CERTIFICATION

I, Mrs. Vaishali Parekh B.com, Research Analyst, author and the name subscribed to this report, hereby certify that all of the views expressed in this research report accurately reflect our views about the subject issuer(s) or securities. We also certify that no part of our compensation was, is, or will be directly or indirectly related to the specific recommendation(s) or view(s) in this report.

Terms & conditions and other disclosures:

Prabhudas Lilladher Pvt. Ltd, Mumbai, India (hereinafter referred to as "PL") is engaged in the business of Stock Broking, Portfolio Manager, Depository Participant and distribution for third party financial products. PL is a subsidiary of Prabhudas Lilladher Advisory Services Pvt Ltd. which has its various subsidiaries engaged in business of commodity broking, investment banking, financial services (margin funding) and distribution of third party financial/other products, details in respect of which are available at www.plindia.com

This document has been prepared by the Research Division of PL and is meant for use by the recipient only as information and is not for circulation. This document is not to be reported or copied or made available to others without prior permission of PL. It should not be considered or taken as an offer to sell or a solicitation to buy or sell any security.

The information contained in this report has been obtained from sources that are considered to be reliable. However, PL has not independently verified the accuracy or completeness of the same. Neither PL nor any of its affiliates, its directors or its employees accepts any responsibility of whatsoever nature for the information, statements and opinion given, made available or expressed herein or for any omission therein.

Recipients of this report should be aware that past performance is not necessarily a guide to future performance and value of investments can go down as well. The suitability or otherwise of any investments will depend upon the recipient's particular circumstances and, in case of doubt, advice should be sought from an independent expert/advisor.

Either PL or its affiliates or its directors or its employees or its representatives or its clients or their relatives may have position(s), make market, act as principal or engage in transactions of securities of companies referred to in this report and they may have used the research material prior to publication.

PL may from time to time solicit or perform investment banking or other services for any company mentioned in this document.

PL is registered as Research Analyst under Securities and Exchange Board of India (Research Analysts) Regulations, 2014 PL submits that no material disciplinary action has been taken on us by any Regulatory Authority impacting Equity Research Analysis activities.

PL or its research analysts or its associates or his relatives do not have any financial interest in the subject company.

PL or its research analysts or its associates or his relatives do not have actual/beneficial ownership of one per cent or more securities of the subject company at the end of the month immediately preceding the date of publication of the research report.

PL or its research analysts or its associates or his relatives do not have any material conflict of interest at the time of publication of the research report.

PL or its associates might have received compensation from the subject company in the past twelve months.

PL or its associates might have managed or co-managed public offering of securities for the subject company in the past twelve months or mandated by the subject company for any other assignment in the past twelve months.

PL or its associates might have received any compensation for investment banking or merchant banking or brokerage services from the subject company in the past twelve months.

PL or its associates might have received any compensation for products or services other than investment banking or merchant banking or brokerage services from the subject company in the past twelve months PL or its associates might have received any compensation or other benefits from the subject company or third party in connection with the research report.

PL encourages independence in research report preparation and strives to minimize conflict in preparation of research report. PL or its analysts did not receive any compensation or other benefits from the subject Company or third party in connection with the preparation of the research report. PL or its Research Analysts do not have any material conflict of interest at the time of publication of this report.

It is confirmed that Mrs. Vaishali Parekh B.com, Research Analyst of this report has not received any compensation from the companies mentioned in the report in the preceding twelve months compensation of our Research Analysts is not based on any specific merchant banking, investment banking or brokerage service transactions.

The Research analysts for this report certifies that all of the views expressed in this report accurately reflect his or her personal views about the subject company or companies and its or their securities, and no part of his or her compensation was, is or will be, directly or indirectly related to specific recommendations or views expressed in this report.

The research analysts for this report has not served as an officer, director or employee of the subject company PL or its research analysts have not engaged in market making activity for the subject company

Our sales people, traders, and other professionals or affiliates may provide oral or written market commentary or trading strategies to our clients that reflect opinions that are contrary to the opinions expressed herein, and our proprietary trading and investing businesses may make investment decisions that are inconsistent with the recommendations expressed herein. In reviewing these materials, you should be aware that any or all of the foregoing, among other things, may give rise to real or potential conflicts of interest.

PL and its associates, their directors and employees may (a) from time to time, have a long or short position in, and buy or sell the securities of the subject company or (b) be engaged in any other transaction involving such securities and earn brokerage or other compensation or act as a market maker in the financial instruments of the subject company or act as an advisor or lender/borrower to the subject company or may have any other potential conflict of interests with respect to any recommendation and other related information and opinions.

Regd. Office: 3rd Floor, Sadhana House, 570, P. B. Marg, Behind Mahindra Tower, Worli, Mumbai - 400 018, India.