

* Sensex 76741.82 +238.22

* Nifty 23962.80 +80.75

* Bank Nifty 57252.45 +509.85

Market Preview

Nifty consolidates near the 24000 zone

Nifty witnessed some revival to consolidate near the 24000 zone during the session and closed near the 23950 level with the sentiment maintained with a cautious approach. BankNifty made some recovery and hovered near the 200 period MA at 57200 level with bias precariously placed till further clarity is established. The market breadth was positive with the advance decline indicating a ratio of 3:1 at close.

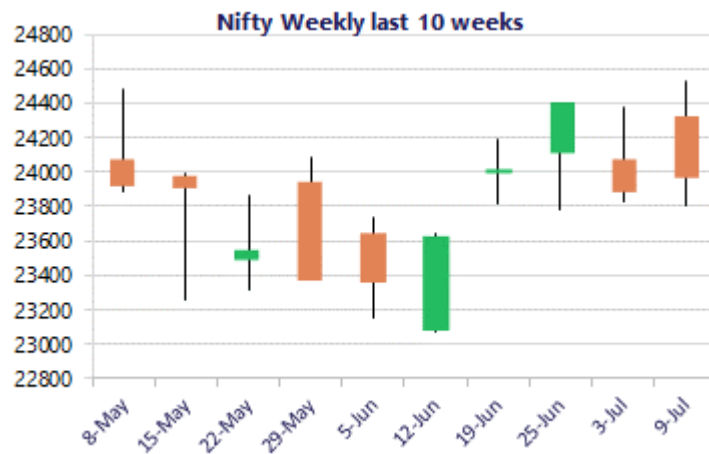
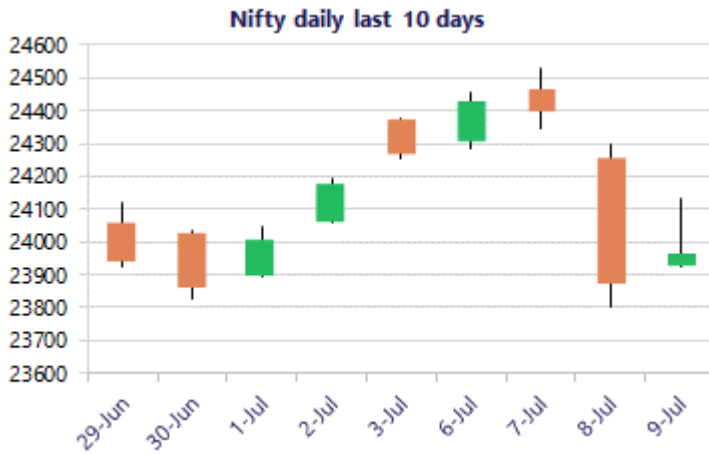
Market Forecast

Nifty daily range 23800 - 24200

Nifty after witnessing a weak session, consolidated near the 24000 zone for most part of the session and closed near the 23950 zone with bias and sentiment precariously placed as of now till clarity is established from the geo-political tensions amid the middle east. As mentioned earlier, the index would have the important near-term support at 23800 zone failing which there can be intensified selling pressure whereas on the upside, a decisive move above the 24200 is necessary to improve the bias.

BankNifty after opening on a positive note near the 57200-zone remained rangebound for rest part of the session to end near the 200-period MA level near 57250 level with bias maintained with a cautiously positive approach as of now. The index would have the near-term support at the 50EMA zone at 56400 level which needs to be sustained, failing which the trend would turn weak and can expect for further slide whereas on the upside, a decisive breach above the 58500 zone is necessary to indicate a breakout.

The support for the day is seen at 23800 levels, while the resistance is seen at 24200 levels. BankNifty would have the daily range of 56500-58000 levels.



*Blue candle → Close rate > Open rate * Red candle → Close rate < Open rate

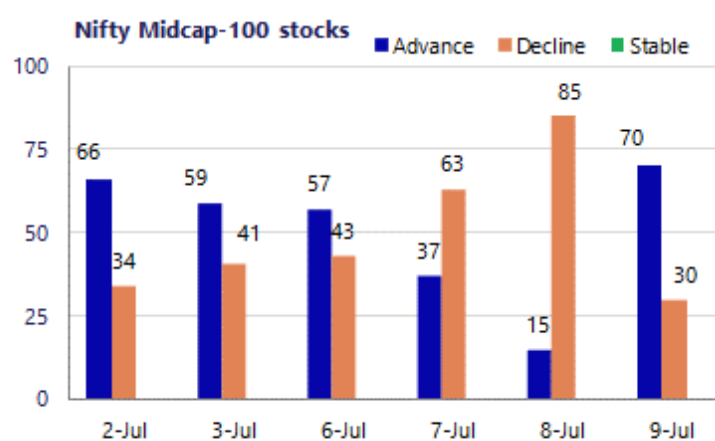
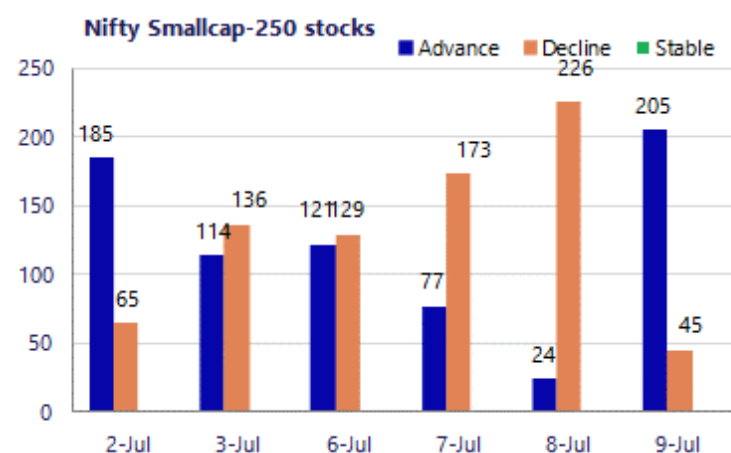
Sensex	Period	Closing	% Chng	Trend	Reversal	2 Sup	1 Sup	Pivot	1 Res	2 Res
Nifty	Daily	23962.80	0.34%	-2	24288.30	23799	23881	24008	24090	24217
	Weekly	24270.85	0.89%	3	23597.45	23612	23941	24159	24488	24705
	Monthly	23865.75	1.35%	-6	24660.55	22541	23203	23733	24395	24924
Bank Nifty	Daily	57252.45	0.90%	-2	58267.00	56598	56925	57195	57522	57792
	Weekly	57938.50	-0.41%	3	55666.90	57026	57482	57913	58369	58799
	Monthly	57542.90	6.09%	-4	59050.45	50746	54145	56425	59824	62104
Sensex	Daily	76741.82	0.31%	-2	77874.30	76131	76436	76882	77187	77632
	Weekly	77763.91	0.86%	3	74867.00	75975	76869	77224	78119	78474
	Monthly	76478.67	2.28%	-6	78980.70	71383	73931	75867	78415	80351

Gainers - Losers (Nifty 500 Stocks)
Gainers

Company Name	Last Price	% Gain	Volume
C. E. Info Syst	1069.2	14.79%	930
Choice Internat	830.45	7.98%	791
Capri Global	252.64	6.57%	239.4
Brigade Ent	534.00	6.22%	502.75
CRISIL	4,054.70	4.72%	3915
Apar Ind	14,070.00	4.66%	13470
Anant Raj	569.45	4.53%	548.1

Losers

Company Name	Last Price	% Loss	Volume
Dr Reddys Labs	1,269.50	-5.89%	1340
BLS Internation	234.6	-3.34%	244
Adani Energy	1,618.50	-2.23%	2379215
Atul	6,183.00	-1.96%	6309.5
Brainbees Solu	203.44	-1.55%	207.9
CarTrade Tech	2735.2	-1.47%	2775.9
Astral Ltd	1317.1	-1.41%	1336



Nifty Daily chart with RSI indicator



BankNifty Daily chart with RSI indicator

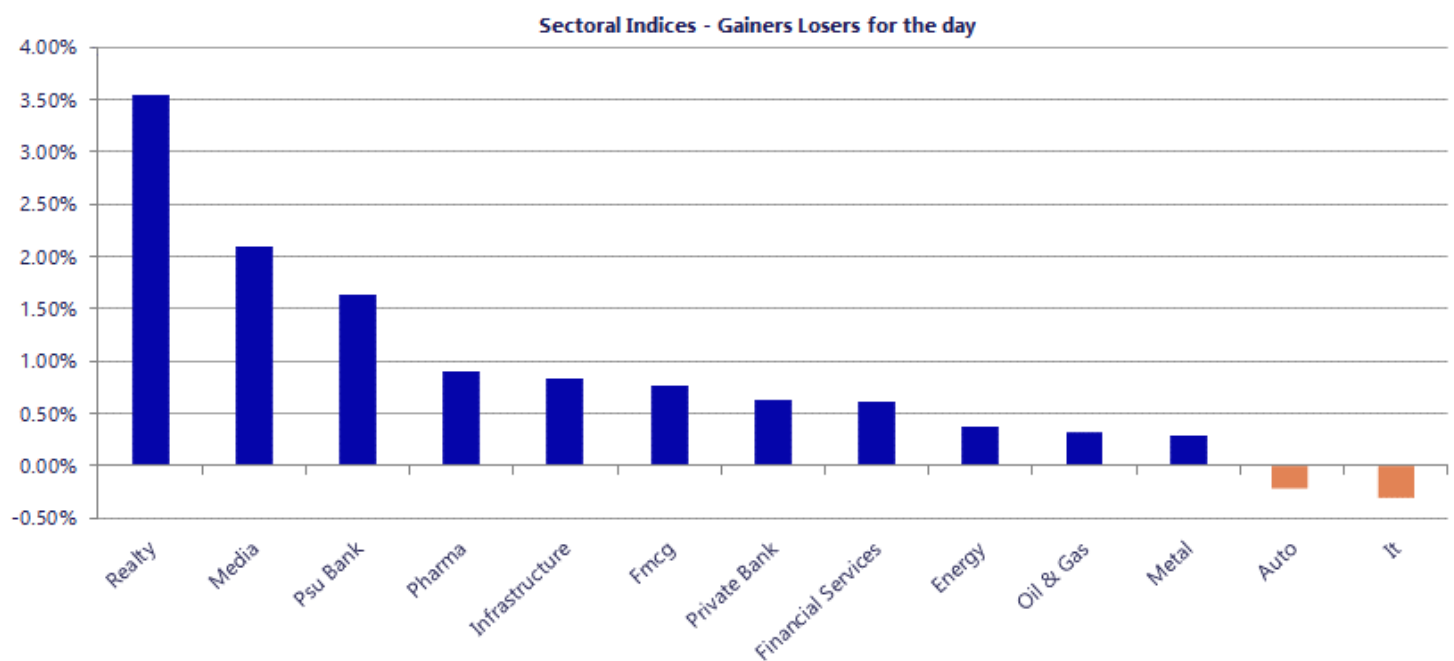


Breakouts - Cross above 200 DMA			
Company Name	LCP	Change %	200 DMA
Rubfila Intl	77.44	5.29	73.55
Siddhika	216.55	4.28	207.66
HLE Glascoat	418.6	3.87	402.99
Soma Textile	111.08	3.87	106.94
Prime Focus	244.47	3.69	235.76
Renaissance	120.53	3.63	116.31
Anant Raj	569.45	3.18	551.9
De Neers	177.65	3.10	172.31
HDFC AMC	2737.1	2.88	2660.42
Aartech Solonic	49.66	2.77	48.32
Siyaram Silk	635	2.63	618.74
Thomas Scott	324.9	2.57	316.77
ISGEC Heavy Eng	923.85	2.42	902.04
Kalyan Jeweller	443	2.31	432.98
Axiscades Tech	1605.9	2.29	1569.89
Everest Ind	481.35	2.21	470.92
Healthcare Glob	652.7	2.09	639.31
Lumax Inds	5366	1.80	5271.06

Breakdown - Cross below 200 DMA			
Company Name	LCP	Change %	200 DMA
Onyx Biotec	36.8	-4.37	38.48
Eurotex	14.56	-2.74	14.97
Atul	6183	-1.84	6298.84
Inox Green Ener	192.7	-0.24	193.17
HOEC	153.81	-0.23	154.17
Vardhman Hold	3525.9	-0.19	3532.55
Windlas	825.9	-0.11	826.81

* Stocks crossing above its Simple Moving Average (200DMA)

* Stocks crossing below its Simple Moving Average (200DMA)



Nifty 50 Stocks - Summary Details											
Symbol	LTP	Chng	% Chng	Volume (lacs)	Turnover (crs.)	52w High	Diff with 52w H	52w Low	Diff with 52w L	365 days % chng	30 days % chng
NIFTY 50	23962.80	80.75	0.34%	3847.79	33798	26373	9.14%	22183	8.03%	3.10%	-5.94%
ADANIENT	3077.80	30.90	1.01%	26.09	801	3245	5.15%	1753	75.57%	3.29%	22.73%
ADANIPTS	1802.20	10.50	0.59%	11.07	200	1891	4.70%	1291	39.65%	-1.33%	24.89%
APOLLOHOSP	8830.00	76.50	0.87%	5.72	507	8950	1.34%	6697	31.86%	3.59%	18.22%
ASIANPAINT	2677.20	11.30	0.42%	9.19	247	2986	10.33%	2115	26.58%	-1.14%	7.14%
AXISBANK	1301.90	-7.60	-0.58%	56.10	732	1418	8.21%	1043	24.88%	0.74%	11.78%
BAJAJ-AUTO	10174.50	10.50	0.10%	1.91	195	10834	6.09%	7859	29.47%	-0.09%	21.69%
BAJAJFINSV	1899.00	44.10	2.38%	20.50	386	2195	13.49%	1597	18.91%	12.16%	-6.29%
BAJFINANCE	1002.90	-7.50	-0.74%	117.12	1176	1103	9.03%	788	27.29%	13.08%	6.62%
BEL	407.05	-0.55	-0.13%	108.94	444	473	14.02%	361	12.69%	-1.21%	-2.54%
BHARTIARTL	1935.10	47.00	2.49%	111.45	2161	2175	11.01%	1741	11.18%	7.57%	-4.19%
CIPLA	1443.60	11.80	0.82%	9.47	137	1673	13.71%	1166	23.84%	4.87%	-3.22%
COALINDIA	429.95	0.90	0.21%	28.54	123	491	12.48%	369	16.63%	-7.91%	10.97%
DRREDDY	1271.20	-77.80	-5.77%	84.11	1089	1415	10.16%	1148	10.69%	0.21%	0.14%
EICHERMOT	7345.50	-73.00	-0.98%	6.26	462	8230	10.75%	5353	37.22%	1.98%	28.98%
ETERNAL	292.45	5.75	2.01%	498.61	1468	368	20.63%	213	37.56%	19.05%	10.55%
GRASIM	3196.00	61.20	1.95%	9.37	299	3222	0.81%	2503	27.71%	3.25%	14.23%
HCLTECH	1151.00	5.40	0.47%	20.33	233	1780	35.34%	1030	11.75%	0.41%	-31.24%
HDFCBANK	817.00	6.70	0.83%	398.92	3266	1021	19.94%	727	12.43%	10.65%	-18.75%
HDFCLIFE	552.40	-3.30	-0.59%	85.90	476	815	32.22%	543	1.73%	-1.46%	-29.75%
HINDALCO	961.60	-10.05	-1.03%	60.44	581	1176	18.23%	658	46.25%	-10.69%	42.68%
HINDUNILVR	2143.00	7.20	0.34%	22.01	474	2750	22.07%	2023	5.96%	0.48%	-11.57%
ICICIBANK	1384.00	3.40	0.25%	139.49	1935	1500	7.73%	1188	16.54%	8.55%	-3.35%
INDIGO	5230.50	106.50	2.08%	11.77	610	6233	16.08%	3895	34.28%	15.27%	-10.62%
INFY	1055.30	-14.00	-1.31%	90.03	948	1728	38.93%	982	7.42%	-10.59%	-35.40%
ITC	281.85	1.20	0.43%	125.12	354	427	33.99%	275	2.47%	0.66%	-32.80%
JIOFIN	233.72	3.73	1.62%	115.84	270	339	30.97%	223	4.67%	-0.21%	-29.14%
JSWSTEEL	1226.00	6.50	0.53%	11.51	141	1328	7.68%	1017	20.50%	-2.83%	17.84%
KOTAKBANK	377.30	7.20	1.95%	307.20	1147	453	16.75%	346	9.20%	-1.15%	-15.38%
LT	3883.00	-9.10	-0.23%	51.17	2004	4440	12.55%	3288	18.09%	-0.45%	8.47%
M&M	3088.00	-14.50	-0.47%	29.23	907	3840	19.58%	2896	6.63%	3.27%	-2.78%
MARUTI	13709.00	-242.00	-1.73%	5.76	798	17370	21.08%	12201	12.36%	4.49%	9.94%
MAXHEALTH	1100.00	15.20	1.40%	25.25	279	1311	16.08%	903	21.82%	9.66%	-11.82%
NESTLEIND	1464.20	13.70	0.94%	13.47	198	1498	2.26%	1085	34.99%	3.81%	20.62%
NTPC	344.45	-4.25	-1.22%	178.21	616	414	16.88%	316	9.16%	-3.15%	0.13%
ONGC	243.49	-3.51	-1.42%	140.63	344	308	20.82%	228	6.96%	-5.99%	0.06%
POWERGRID	281.20	1.50	0.54%	68.00	192	325	13.46%	250	12.48%	-1.58%	-6.16%
RELIANCE	1280.90	5.00	0.39%	146.52	1885	1612	20.53%	1253	2.21%	0.92%	-15.67%
SBILIFE	1823.00	34.00	1.90%	8.68	158	2132	14.49%	1700	7.21%	3.05%	0.45%
SBIN	1022.50	5.60	0.55%	76.62	785	1235	17.19%	787	30.00%	1.97%	26.09%
SHRIRAMFIN	1033.90	19.50	1.92%	39.84	410	1108	6.69%	567	82.51%	13.40%	51.81%
SUNPHARMA	1940.70	52.50	2.78%	44.46	860	1952	0.58%	1548	25.37%	9.09%	16.25%
TATACONSUM	1104.00	14.20	1.30%	10.18	113	1283	13.93%	1007	9.61%	-0.23%	0.56%
TATASTEEL	187.81	-0.39	-0.21%	212.04	398	224	16.31%	153	23.15%	-7.56%	18.12%
TCS	2059.00	1.50	0.07%	37.91	775	3425	39.88%	1977	4.16%	-4.28%	-39.15%
TECHM	1432.30	3.50	0.24%	13.80	197	1854	22.75%	1304	9.83%	-3.47%	-11.30%
TITAN	4550.00	-21.40	-0.47%	17.77	819	4680	2.77%	3303	37.75%	10.84%	32.57%
TMPV	332.00	-0.05	-0.02%	115.47	384	740	55.12%	294	12.81%	-14.39%	-52.08%
TRENT	2904.00	-20.00	-0.68%	15.47	452	3783	23.23%	2184	32.99%	4.79%	-19.45%
ULTRACEMCO	11563.00	210.00	1.85%	1.62	186	13110	11.80%	10325	11.99%	5.98%	-7.95%
WIPRO	172.94	0.22	0.13%	102.70	178	273	36.68%	169	2.33%	-4.81%	-35.42%

Disclaimer / Disclosures

ANALYST CERTIFICATION

I, Mrs. Vaishali Parekh B.com, Research Analyst, author and the name subscribed to this report, hereby certify that all of the views expressed in this research report accurately reflect our views about the subject issuer(s) or securities. We also certify that no part of our compensation was, is, or will be directly or indirectly related to the specific recommendation(s) or view(s) in this report.

Terms & conditions and other disclosures:

Prabhudas Lilladher Pvt. Ltd, Mumbai, India (hereinafter referred to as "PL") is engaged in the business of Stock Broking, Portfolio Manager, Depository Participant and distribution for third party financial products. PL is a subsidiary of Prabhudas Lilladher Advisory Services Pvt Ltd. which has its various subsidiaries engaged in business of commodity broking, investment banking, financial services (margin funding) and distribution of third party financial/other products, details in respect of which are available at www.plindia.com

This document has been prepared by the Research Division of PL and is meant for use by the recipient only as information and is not for circulation. This document is not to be reported or copied or made available to others without prior permission of PL. It should not be considered or taken as an offer to sell or a solicitation to buy or sell any security.

The information contained in this report has been obtained from sources that are considered to be reliable. However, PL has not independently verified the accuracy or completeness of the same. Neither PL nor any of its affiliates, its directors or its employees accepts any responsibility of whatsoever nature for the information, statements and opinion given, made available or expressed herein or for any omission therein.

Recipients of this report should be aware that past performance is not necessarily a guide to future performance and value of investments can go down as well. The suitability or otherwise of any investments will depend upon the recipient's particular circumstances and, in case of doubt, advice should be sought from an independent expert/advisor.

Either PL or its affiliates or its directors or its employees or its representatives or its clients or their relatives may have position(s), make market, act as principal or engage in transactions of securities of companies referred to in this report and they may have used the research material prior to publication.

PL may from time to time solicit or perform investment banking or other services for any company mentioned in this document.

PL is registered as Research Analyst under Securities and Exchange Board of India (Research Analysts) Regulations, 2014 PL submits that no material disciplinary action has been taken on us by any Regulatory Authority impacting Equity Research Analysis activities.

PL or its research analysts or its associates or his relatives do not have any financial interest in the subject company.

PL or its research analysts or its associates or his relatives do not have actual/beneficial ownership of one per cent or more securities of the subject company at the end of the month immediately preceding the date of publication of the research report.

PL or its research analysts or its associates or his relatives do not have any material conflict of interest at the time of publication of the research report.

PL or its associates might have received compensation from the subject company in the past twelve months.

PL or its associates might have managed or co-managed public offering of securities for the subject company in the past twelve months or mandated by the subject company for any other assignment in the past twelve months.

PL or its associates might have received any compensation for investment banking or merchant banking or brokerage services from the subject company in the past twelve months.

PL or its associates might have received any compensation for products or services other than investment banking or merchant banking or brokerage services from the subject company in the past twelve months PL or its associates might have received any compensation or other benefits from the subject company or third party in connection with the research report.

PL encourages independence in research report preparation and strives to minimize conflict in preparation of research report. PL or its analysts did not receive any compensation or other benefits from the subject Company or third party in connection with the preparation of the research report. PL or its Research Analysts do not have any material conflict of interest at the time of publication of this report.

It is confirmed that Mrs. Vaishali Parekh B.com, Research Analyst of this report has not received any compensation from the companies mentioned in the report in the preceding twelve months compensation of our Research Analysts is not based on any specific merchant banking, investment banking or brokerage service transactions.

The Research analysts for this report certifies that all of the views expressed in this report accurately reflect his or her personal views about the subject company or companies and its or their securities, and no part of his or her compensation was, is or will be, directly or indirectly related to specific recommendations or views expressed in this report.

The research analysts for this report has not served as an officer, director or employee of the subject company PL or its research analysts have not engaged in market making activity for the subject company

Our sales people, traders, and other professionals or affiliates may provide oral or written market commentary or trading strategies to our clients that reflect opinions that are contrary to the opinions expressed herein, and our proprietary trading and investing businesses may make investment decisions that are inconsistent with the recommendations expressed herein. In reviewing these materials, you should be aware that any or all of the foregoing, among other things, may give rise to real or potential conflicts of interest.

PL and its associates, their directors and employees may (a) from time to time, have a long or short position in, and buy or sell the securities of the subject company or (b) be engaged in any other transaction involving such securities and earn brokerage or other compensation or act as a market maker in the financial instruments of the subject company or act as an advisor or lender/borrower to the subject company or may have any other potential conflict of interests with respect to any recommendation and other related information and opinions.

Regd. Office: 3rd Floor, Sadhana House, 570, P. B. Marg, Behind Mahindra Tower, Worli, Mumbai - 400 018, India.