

* Sensex 77100.47 + 109.25

* Nifty 24056.00 + 34.35

* Bank Nifty 58177.05 + 26.70

Market Preview

Nifty ends near 24000 zone amid volatility

Nifty fizzled out the gains witnessed in the morning session finding resistance near the 24250 zone and closed near the 24050 level with bias still maintained with a cautiously positive approach. BankNifty failed to sustain above the 58700 zone during the intraday session and with profit booking seen ended the session near 58200 level with bias overall maintained positive. The market breadth turned weak with the advance decline indicating a ratio of 1:2 at close.

Market Forecast

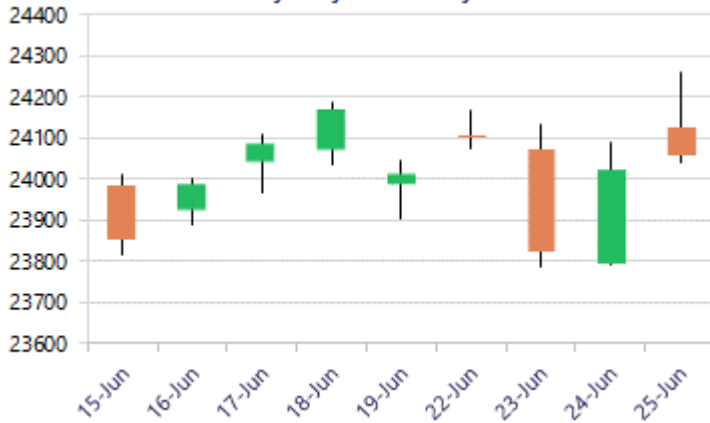
Nifty daily range 23800 - 24300

Nifty indicated a positive start and achieved the 24250 zone in the first half of the trading session with profit booking seen post lunch to fizzle out the gains and ended near the 24050 level with bias maintained with a cautiously positive approach as of now. As mentioned earlier, the index would have the important support positioned near the 23800 zone which needs to be sustained, whereas on the upside, the crucial tough resistance hurdle near the 24350 zone needs to be breached decisively to establish conviction and clarity for further upside positive move.

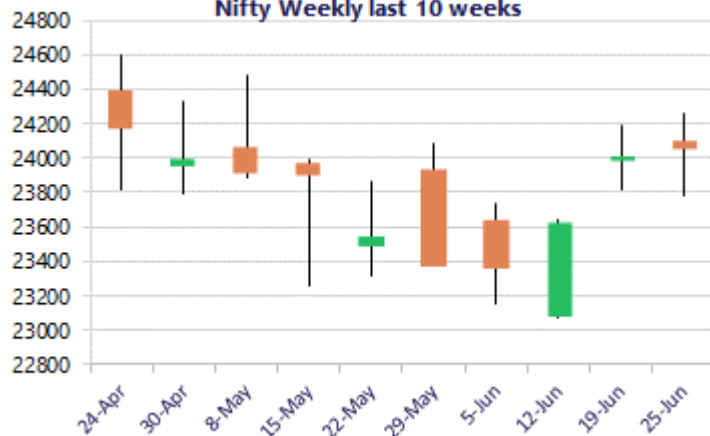
BankNifty opened with a gap up near the 58500 zone and surged ahead to touch the 58700 level but with heavy profit booking seen eroded the gain and closed near the 58200 level with bias and sentiment maintained with a positive approach. The index would continue to have the support maintained near the important 100 period MA at 56400 zone which needs to be sustained and, on the upside, can expect for targets of 59300 and 60500 levels in the coming days.

The support for the day is seen at 23800 levels, while the resistance is seen at 24300 levels. BankNifty would have the daily range of 57200-59000 levels.

Nifty daily last 10 days



Nifty Weekly last 10 weeks

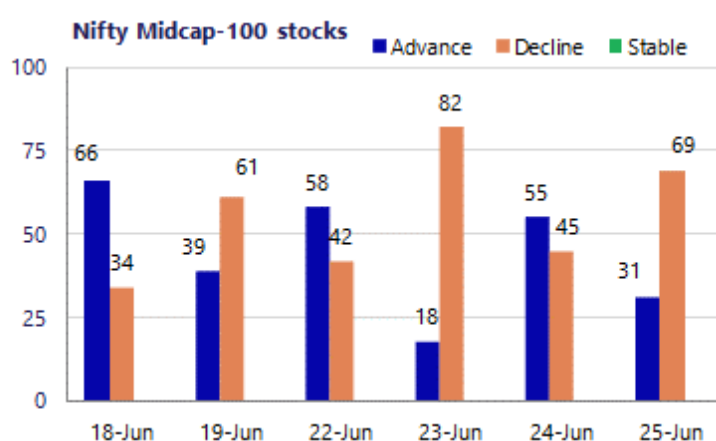
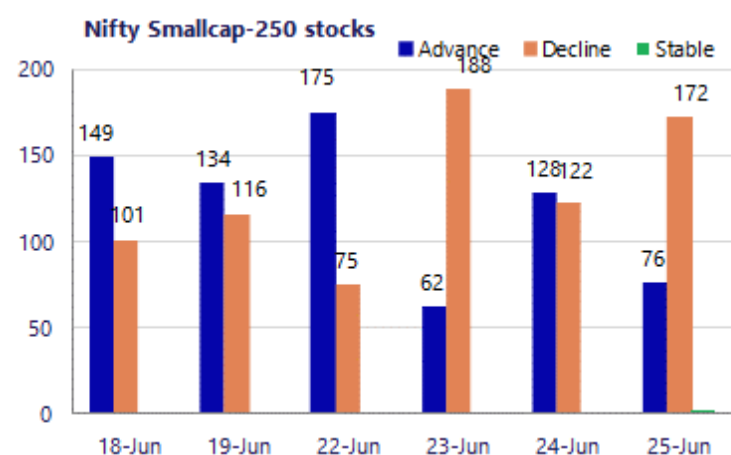


*Blue candle → Close rate > Open rate * Red candle → Close rate < Open rate

Sensex	Period	Closing	% Chng	Trend	Reversal	2 Sup	1 Sup	Pivot	1 Res	2 Res
Nifty	Daily	24056.00	0.14%	-3	24104.30	23896	23976	24119	24199	24341
	Weekly	24056.00	0.18%	3	23597.45	23558	23807	24034	24283	24511
	Monthly	23547.75	-1.87%	-5	25345.55	22545	23046	23764	24266	24984
Bank Nifty	Daily	58177.05	0.05%	-3	58312.45	57735	57956	58331	58552	58927
	Weekly	58177.05	0.85%	3	55666.90	56360	57268	57987	58896	59615
	Monthly	54239.20	-1.14%	-3	60590.40	50902	52570	54452	56121	58003
Sensex	Daily	77100.47	0.14%	-3	77226.30	76489	76795	77299	77605	78109
	Weekly	77100.47	0.39%	3	74867.00	75275	76188	76995	77908	78716
	Monthly	74775.74	-2.78%	-5	81359.20	71515	73145	75765	77395	80015

Gainers - Losers (Nifty 500 Stocks)

Gainers				Losers			
Company Name	Last Price	% Gain	Volume	Company Name	Last Price	% Loss	Volume
Aegis Logistics	1140.65	7.31%	1073.9	Bandhan Bank	201.76	-4.72%	212.65
Asahi India	898.90	4.82%	858.95	ABSL AMC	1141.2	-4.52%	1199.7
Ashok Leyland	160.68	3.72%	156.6	Hind Zinc	518.05	-4.41%	528
CarTrade Tech	2,694.40	3.48%	2613.1	Apar Ind	16,022.00	-3.86%	16735
Aditya Birla Re	1,346.70	3.16%	1319.3	IFCI	77.00	-3.44%	80.4
Aadhar Housing	518.50	2.41%	2800720	Brigade Ent	525.2	-3.38%	544
Apollo Tyres	430.65	2.10%	426	Delhivery	464.8	-3.38%	481.05



Nifty Daily chart with RSI indicator



BankNifty Daily chart with RSI indicator

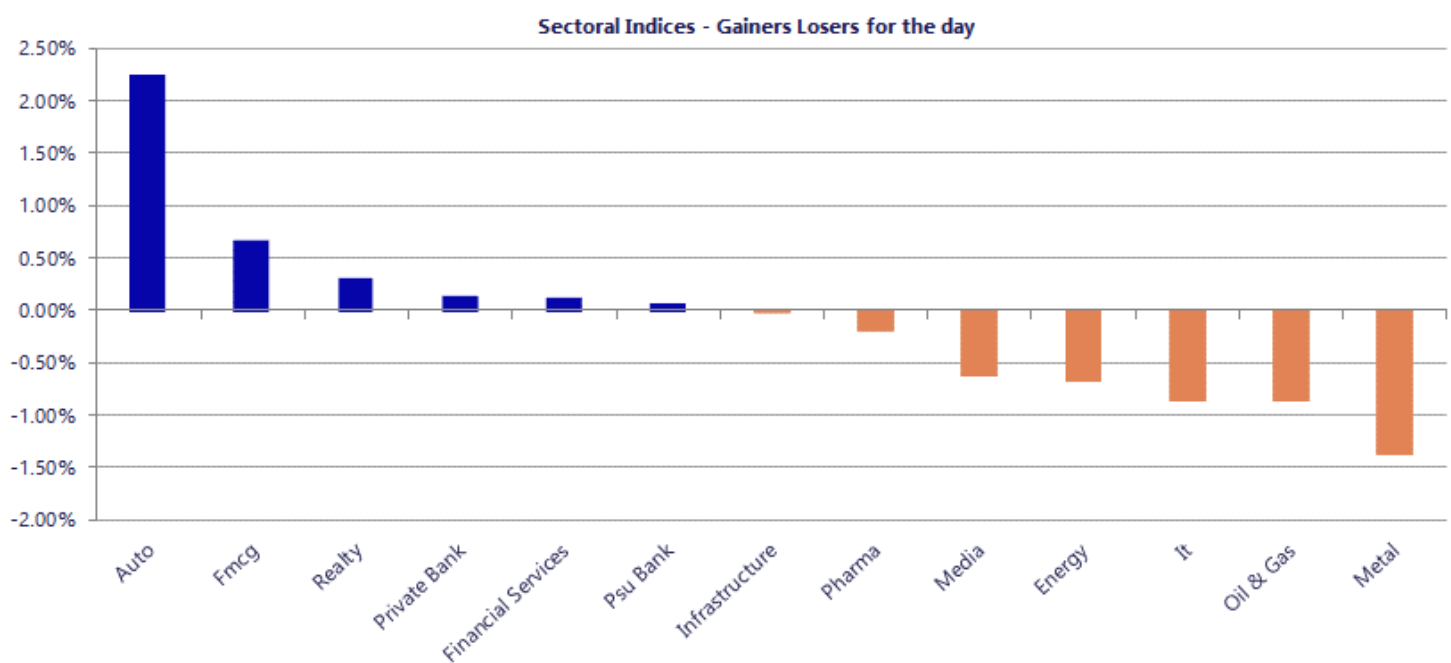


Breakouts - Cross above 200 DMA			
Company Name	LCP	Change %	200 DMA
Ramcoind	342.75	11.47	307.49
Relaxo Footwear	413.55	10.56	374.06
Swaraj Suiting	266.8	8.24	246.5
Repc Home	420	6.94	392.76
AION-TECH	51.88	6.03	48.93
VLS Finance	262.27	5.81	247.86
DUGLOBAL	38.1	4.56	36.44
Waaree Renewabl	1020.65	2.59	994.88
Jayant Agro-Org	210.85	2.03	206.65
Sundram	929	2.03	910.56
Marvel Decor Lt	75.65	2.01	74.16
OnMobile Global	57.08	1.93	56
Lumax Inds	5291.5	1.37	5220.1
Onward Tech	284.7	1.25	281.19
M&M Financial	328.55	1.07	325.06
Mirza Intl	35.49	1.05	35.12
SSFLPP	124	1.00	122.77
Shiva Mills Lim	62	0.81	61.5

* Stocks crossing above its Simple Moving Average (200DMA)

Breakdown - Cross below 200 DMA			
Company Name	LCP	Change %	200 DMA
TCI Express	533.35	-7.70	577.83
Onyx Biotec	37.05	-4.76	38.9
Chemcon Special	189.1	-4.32	197.64
Hi-Tech Pipes	89.85	-3.79	93.39
Sterling Tools	250.94	-3.70	260.59
KCP	170.57	-3.02	175.88
Finolex Ind	176.25	-2.80	181.33
BOMDYEING	131.37	-2.59	134.86
DDEVPLASTIK	272.43	-2.40	279.14
Max Financial	1611.4	-2.12	1646.31
DIC India	509.65	-2.04	520.28
Zodiac Clothing	83.28	-1.84	84.84
United Nilgiri	477.85	-1.80	486.63
SGBJU29III	14059.86	-1.71	14304.13
Coffee Day	33.29	-1.68	33.86
SGBDC27VII	14013.45	-1.67	14251.86
SPML Infra	199.07	-1.65	202.42
GIC Housing Fin	159.7	-1.63	162.34

* Stocks crossing below its Simple Moving Average (200DMA)



Nifty 50 Stocks - Summary Details											
Symbol	LTP	Chng	% Chng	Volume (lacs)	Turnover (crs.)	52w High	Diff with 52w H	52w Low	Diff with 52w L	365 days % chng	30 days % chng
NIFTY 50	24056.00	34.35	0.14%	4486.92	40012	26373	8.79%	22183	8.45%	0.10%	-4.71%
ADANIENT	3040.30	-29.40	-0.96%	17.20	527	3105	2.08%	1753	73.43%	6.69%	23.91%
ADANIPTS	1795.00	-18.30	-1.01%	18.50	335	1858	3.38%	1291	39.09%	-0.44%	28.85%
APOLLOHOSP	8585.00	11.50	0.13%	3.78	326	8694	1.25%	6697	28.20%	2.15%	21.91%
ASIANPAINT	2640.00	-27.50	-1.03%	20.51	546	2986	11.58%	2115	24.82%	-0.67%	15.79%
AXISBANK	1377.20	-7.30	-0.53%	79.95	1108	1418	2.90%	1043	32.11%	5.03%	13.51%
BAJAJ-AUTO	9850.00	100.00	1.03%	3.53	348	10834	9.08%	7859	25.34%	-6.11%	17.41%
BAJAJFINSV	1766.90	-13.60	-0.76%	11.08	197	2195	19.50%	1597	10.64%	-2.24%	-12.17%
BAJFINANCE	981.40	-9.55	-0.96%	128.07	1270	1103	10.98%	788	24.56%	4.19%	5.75%
BEL	408.50	-5.05	-1.22%	219.91	902	473	13.72%	361	13.10%	-3.16%	0.60%
BHARTIARTL	1849.90	-27.40	-1.46%	85.21	1586	2175	14.93%	1741	6.29%	-1.33%	-5.89%
CIPLA	1439.20	1.30	0.09%	12.18	176	1673	13.97%	1166	23.46%	1.79%	-4.69%
COALINDIA	435.65	-6.10	-1.38%	70.46	306	491	11.32%	369	18.17%	-4.88%	11.21%
DRREDDY	1349.50	21.10	1.59%	17.00	230	1376	1.92%	1148	17.51%	1.36%	0.59%
EICHERMOT	7600.00	28.00	0.37%	6.74	517	8230	7.65%	5353	41.98%	2.51%	36.30%
ETERNAL	255.00	-1.35	-0.53%	209.71	536	368	30.79%	213	19.94%	2.96%	-1.49%
GRASIM	3129.90	2.00	0.06%	7.86	246	3200	2.19%	2503	25.07%	-1.31%	10.53%
HCLTECH	1100.50	-13.40	-1.20%	58.77	654	1780	38.18%	1090	1.01%	-5.59%	-35.91%
HDFCBANK	796.00	2.80	0.35%	467.06	3733	1021	22.00%	727	9.54%	1.16%	-19.60%
HDFCLIFE	584.80	-6.95	-1.17%	15.37	91	821	28.75%	543	7.70%	-5.68%	-25.51%
HINDALCO	952.00	-24.60	-2.52%	121.55	1166	1176	19.05%	640	48.72%	-13.42%	41.53%
HINDUNILVR	2177.00	19.20	0.89%	18.98	414	2750	20.84%	2023	7.64%	-0.89%	-4.46%
ICICIBANK	1387.00	13.40	0.98%	171.73	2388	1500	7.53%	1188	16.79%	7.37%	-2.72%
INDIGO	5462.00	254.80	4.89%	51.45	2786	6233	12.36%	3895	40.22%	21.33%	-3.14%
INFY	1042.90	-13.70	-1.30%	158.66	1663	1728	39.65%	1026	1.65%	-10.75%	-35.42%
ITC	290.00	-0.35	-0.12%	112.29	326	427	32.08%	275	5.44%	-4.59%	-30.35%
JIOFIN	239.00	0.13	0.05%	86.62	208	339	29.42%	223	7.03%	-1.13%	-21.20%
JSWSTEEL	1231.30	0.10	0.01%	17.06	210	1328	7.28%	984	25.20%	-4.51%	20.19%
KOTAKBANK	409.75	3.80	0.94%	165.87	680	453	9.59%	346	18.60%	4.30%	-6.80%
LT	4202.10	20.40	0.49%	31.04	1314	4440	5.36%	3288	27.80%	4.18%	16.09%
M&M	3185.30	120.80	3.94%	53.47	1697	3840	17.05%	2896	9.99%	1.47%	-0.94%
MARUTI	13753.00	505.00	3.81%	9.81	1349	17370	20.82%	12201	12.72%	4.43%	7.72%
MAXHEALTH	1122.90	41.20	3.81%	51.56	579	1314	14.56%	903	24.35%	12.19%	-9.37%
NESTLEIND	1409.80	27.20	1.97%	19.68	276	1498	5.89%	1085	29.97%	-0.27%	17.27%
NTPC	352.50	-4.55	-1.27%	197.65	702	414	14.94%	316	11.71%	-9.63%	6.54%
ONGC	233.15	-6.85	-2.85%	360.73	849	308	24.18%	229	1.99%	-18.18%	-3.62%
POWERGRID	284.50	-6.40	-2.20%	163.06	466	325	12.45%	250	13.80%	-3.67%	-2.05%
RELIANCE	1316.50	2.90	0.22%	126.93	1677	1612	18.32%	1253	5.05%	-3.69%	-10.28%
SBILIFE	1742.00	-25.70	-1.45%	9.33	163	2132	18.29%	1700	2.45%	-8.41%	-5.46%
SBIN	1045.20	10.60	1.02%	160.01	1678	1235	15.35%	787	32.88%	7.80%	30.64%
SHRIRAMFIN	1030.80	11.80	1.16%	89.25	927	1108	6.97%	567	81.96%	7.16%	52.69%
SUNPHARMA	1861.50	-12.90	-0.69%	18.16	340	1917	2.87%	1548	20.25%	1.14%	11.49%
TATACONSUM	1131.50	33.40	3.04%	29.59	332	1283	11.79%	1007	12.34%	-4.69%	0.44%
TATASTEEL	188.60	-1.56	-0.82%	341.49	645	224	15.95%	150	25.33%	-10.28%	20.60%
TCS	2095.90	-13.10	-0.62%	47.36	1003	3490	39.94%	2055	1.99%	-9.20%	-39.16%
TECHM	1439.70	-21.90	-1.50%	25.54	369	1854	22.35%	1304	10.40%	0.29%	-15.56%
TITAN	4290.00	-33.80	-0.78%	7.54	322	4605	6.84%	3303	29.88%	3.14%	17.46%
TMPV	352.60	2.90	0.83%	154.22	548	740	52.33%	294	19.81%	-5.53%	-47.72%
TRENT	3214.40	-32.60	-1.00%	14.14	461	4174	22.99%	2184	47.20%	12.13%	-21.27%
ULTRACEMCO	11455.00	25.00	0.22%	4.02	465	13110	12.62%	10325	10.94%	-2.31%	-2.37%
WIPRO	175.09	0.61	0.35%	215.24	376	273	35.89%	171	2.10%	-15.35%	-35.01%

Disclaimer / Disclosures

ANALYST CERTIFICATION

I, Mrs. Vaishali Parekh B.com, Research Analyst, author and the name subscribed to this report, hereby certify that all of the views expressed in this research report accurately reflect our views about the subject issuer(s) or securities. We also certify that no part of our compensation was, is, or will be directly or indirectly related to the specific recommendation(s) or view(s) in this report.

Terms & conditions and other disclosures:

Prabhudas Lilladher Pvt. Ltd, Mumbai, India (hereinafter referred to as "PL") is engaged in the business of Stock Broking, Portfolio Manager, Depository Participant and distribution for third party financial products. PL is a subsidiary of Prabhudas Lilladher Advisory Services Pvt Ltd. which has its various subsidiaries engaged in business of commodity broking, investment banking, financial services (margin funding) and distribution of third party financial/other products, details in respect of which are available at www.plindia.com

This document has been prepared by the Research Division of PL and is meant for use by the recipient only as information and is not for circulation. This document is not to be reported or copied or made available to others without prior permission of PL. It should not be considered or taken as an offer to sell or a solicitation to buy or sell any security.

The information contained in this report has been obtained from sources that are considered to be reliable. However, PL has not independently verified the accuracy or completeness of the same. Neither PL nor any of its affiliates, its directors or its employees accepts any responsibility of whatsoever nature for the information, statements and opinion given, made available or expressed herein or for any omission therein.

Recipients of this report should be aware that past performance is not necessarily a guide to future performance and value of investments can go down as well. The suitability or otherwise of any investments will depend upon the recipient's particular circumstances and, in case of doubt, advice should be sought from an independent expert/advisor.

Either PL or its affiliates or its directors or its employees or its representatives or its clients or their relatives may have position(s), make market, act as principal or engage in transactions of securities of companies referred to in this report and they may have used the research material prior to publication.

PL may from time to time solicit or perform investment banking or other services for any company mentioned in this document.

PL is registered as Research Analyst under Securities and Exchange Board of India (Research Analysts) Regulations, 2014 PL submits that no material disciplinary action has been taken on us by any Regulatory Authority impacting Equity Research Analysis activities.

PL or its research analysts or its associates or his relatives do not have any financial interest in the subject company.

PL or its research analysts or its associates or his relatives do not have actual/beneficial ownership of one per cent or more securities of the subject company at the end of the month immediately preceding the date of publication of the research report.

PL or its research analysts or its associates or his relatives do not have any material conflict of interest at the time of publication of the research report.

PL or its associates might have received compensation from the subject company in the past twelve months.

PL or its associates might have managed or co-managed public offering of securities for the subject company in the past twelve months or mandated by the subject company for any other assignment in the past twelve months.

PL or its associates might have received any compensation for investment banking or merchant banking or brokerage services from the subject company in the past twelve months.

PL or its associates might have received any compensation for products or services other than investment banking or merchant banking or brokerage services from the subject company in the past twelve months PL or its associates might have received any compensation or other benefits from the subject company or third party in connection with the research report.

PL encourages independence in research report preparation and strives to minimize conflict in preparation of research report. PL or its analysts did not receive any compensation or other benefits from the subject Company or third party in connection with the preparation of the research report. PL or its Research Analysts do not have any material conflict of interest at the time of publication of this report.

It is confirmed that Mrs. Vaishali Parekh B.com, Research Analyst of this report has not received any compensation from the companies mentioned in the report in the preceding twelve months compensation of our Research Analysts is not based on any specific merchant banking, investment banking or brokerage service transactions.

The Research analysts for this report certifies that all of the views expressed in this report accurately reflect his or her personal views about the subject company or companies and its or their securities, and no part of his or her compensation was, is or will be, directly or indirectly related to specific recommendations or views expressed in this report.

The research analysts for this report has not served as an officer, director or employee of the subject company PL or its research analysts have not engaged in market making activity for the subject company

Our sales people, traders, and other professionals or affiliates may provide oral or written market commentary or trading strategies to our clients that reflect opinions that are contrary to the opinions expressed herein, and our proprietary trading and investing businesses may make investment decisions that are inconsistent with the recommendations expressed herein. In reviewing these materials, you should be aware that any or all of the foregoing, among other things, may give rise to real or potential conflicts of interest.

PL and its associates, their directors and employees may (a) from time to time, have a long or short position in, and buy or sell the securities of the subject company or (b) be engaged in any other transaction involving such securities and earn brokerage or other compensation or act as a market maker in the financial instruments of the subject company or act as an advisor or lender/borrower to the subject company or may have any other potential conflict of interests with respect to any recommendation and other related information and opinions.

Regd. Office: 3rd Floor, Sadhana House, 570, P. B. Marg, Behind Mahindra Tower, Worli, Mumbai - 400 018, India.