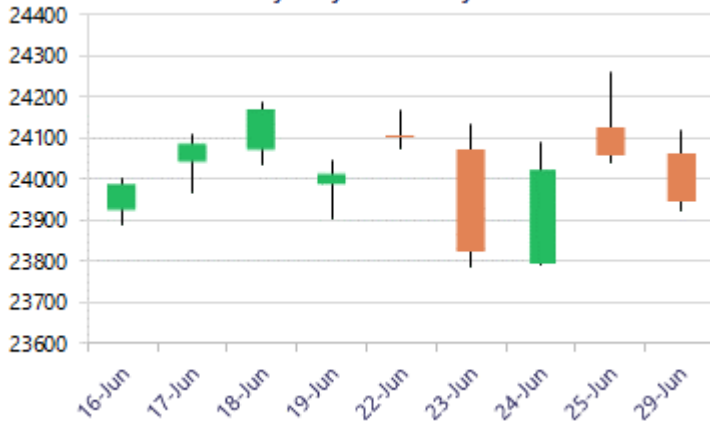


* Sensex 76728.37 - 372.10

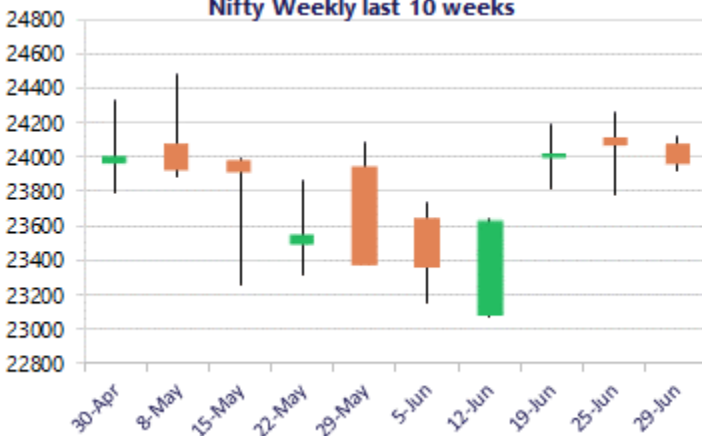
* Nifty 23946.25 - 109.75

* Bank Nifty 57727.35 - 449.70

Nifty daily last 10 days



Nifty Weekly last 10 weeks



*Blue candle → Close rate > Open rate * Red candle → Close rate < Open rate

Market Preview

Nifty slips below the 24000 zone

Nifty witnessed a flat positive opening session but faced resistance near the 24120 level, erasing gains due to profit booking, while the overall bias remained cautiously positive. Bank Nifty improved significantly, but the intraday session saw some profit booking that halted the upward move, closing near the 57700 level. Overall market breadth was weak, with the advance-decline ratio indicating 1:2 at close.

Market Forecast

Nifty daily range 23800 - 24100

Nifty has been in consolidation, hovering between the range of the 200-period MA of the 23850 level and the 24250 zone since the last couple of sessions, with bias overall maintained with a cautiously positive approach. A decisive breach above the 24250 zone shall establish conviction and trigger a further rise to the initial target of the 24400 - 24600 levels. On the downside, the major and crucial support would be maintained near the 200 DMA level of the 23850 zone, which needs to be sustained to maintain the overall trend intact.

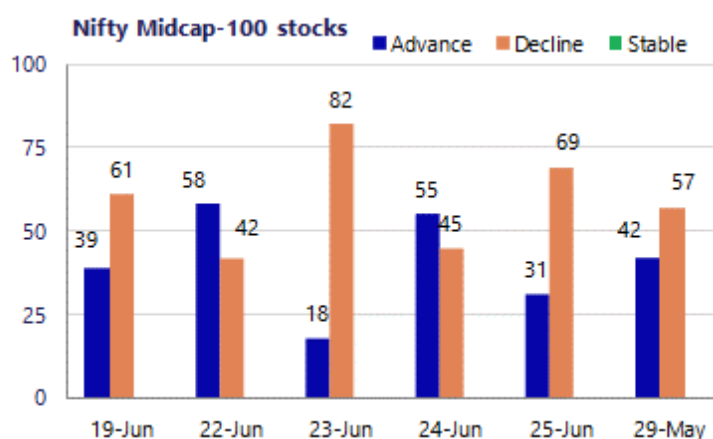
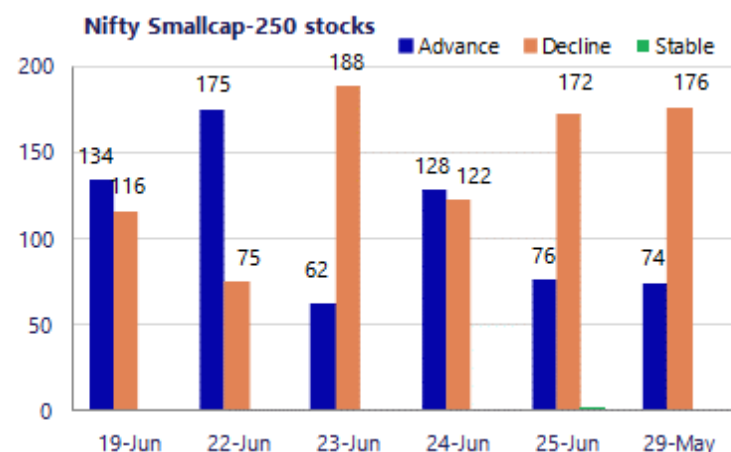
BankNifty continues to consolidate, hovering above the 200 DMA level of the 57150 zone, with consolidation visible with the frontline banking stocks maintaining their bias and needing a decisive directional move to decide the further movement of the index. On the upside, the index would need a decisive move past the near-term resistance of the 58700 level to trigger a fresh rise, whereas, on the downside, it would have the important near-term support positioned near the 200DMA at the 57150 level, which needs to be sustained as of now.

The support for the day is seen at 23800 levels, while the resistance is seen at 24100 levels. BankNifty would have the daily range of 57000-58500 levels.

Sensex	Period	Closing	% Chng	Trend	Reversal	2 Sup	1 Sup	Pivot	1 Res	2 Res
Nifty	Daily	23946.25	-0.46%	-4	24083.70	23801	23874	23997	24069	24192
	Weekly	24056.00	0.18%	3	23597.45	23558	23807	24034	24283	24511
	Monthly	23547.75	-1.87%	-5	25345.55	22545	23046	23764	24266	24984
Bank Nifty	Daily	57727.35	-0.77%	-4	58501.35	57213	57470	57894	58151	58575
	Weekly	58177.05	0.85%	3	55666.90	56360	57268	57987	58896	59615
	Monthly	54239.20	-1.14%	-3	60590.40	50902	52570	54452	56121	58003
Sensex	Daily	76728.37	-0.48%	-4	77170.25	76237	76482	76868	77114	77499
	Weekly	77100.47	0.39%	3	74867.00	75275	76188	76995	77908	78716
	Monthly	74775.74	-2.78%	-5	81359.20	71515	73145	75765	77395	80015

Gainers - Losers (Nifty 500 Stocks)

Gainers				Losers			
Company Name	Last Price	% Gain	Volume	Company Name	Last Price	% Loss	Volume
Ather Energy	1083.75	8.51%	990	Astral Ltd	1,368.00	-8.00%	1417
Acutaas Chem	3,568.20	8.13%	3315	Asahi India	838.8	-6.69%	908.85
Ajanta Pharma	3384.2	6.41%	3180.4	Brigade Ent	501.90	-4.44%	526
ACME Solar	379.25	6.17%	357.05	Berger Paints	518.30	-3.78%	536
Allied Blenders	659.50	5.98%	624.05	AFFLE 3I	1,399.50	-3.46%	1449.5
Bank of Mah	93.85	5.79%	88.25	Amber Enterpris	7413	-3.21%	7684
Chennai Petro	1,153.80	4.68%	1105	Balkrishna Ind	2167.6	-2.95%	2221



Nifty Daily chart with RSI indicator



BankNifty Daily chart with RSI indicator



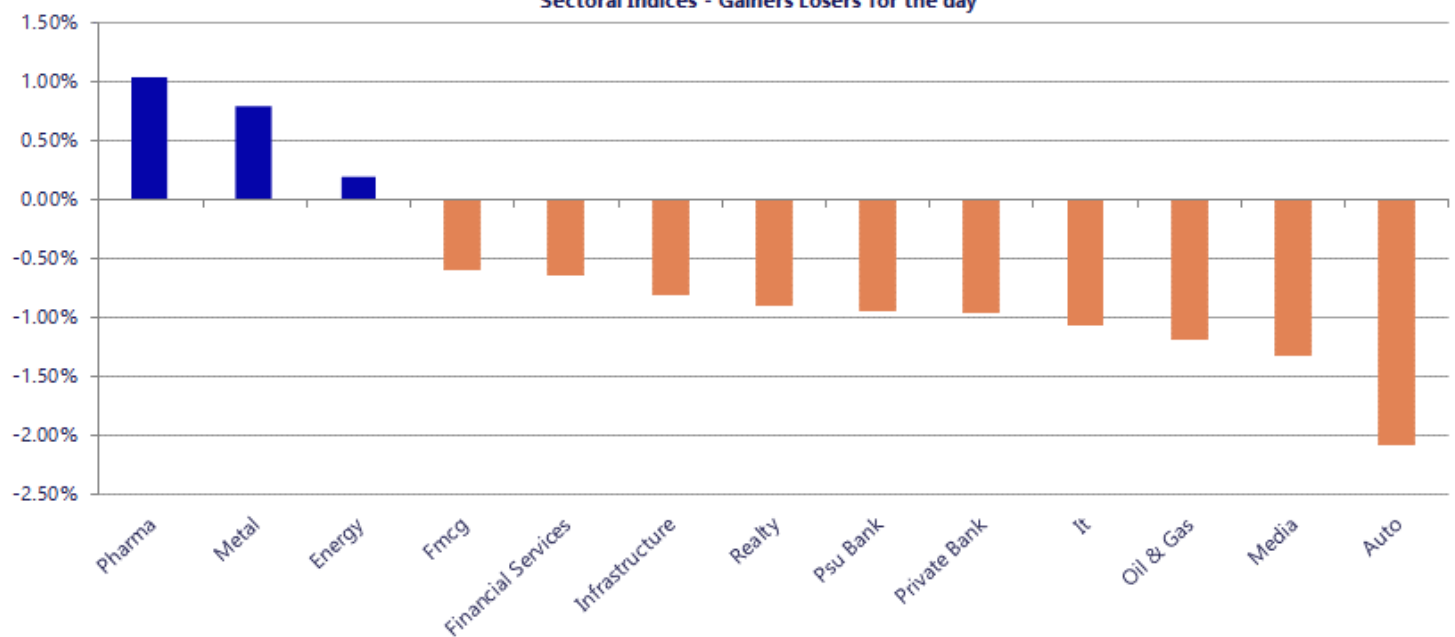
Breakouts - Cross above 200 DMA			
Company Name	LCP	Change %	200 DMA
Cinevista	18.31	12.75	16.24
Saksoft	183.77	8.02	170.13
Gem Aromatics	193.43	3.38	187.11
AvenuesAI	16.79	3.26	16.26
Wendt	7886	2.73	7676.16
NHPC	81.57	2.62	79.49
TTK Prestige	595.75	2.45	581.48
Surana Telecom	19.97	2.15	19.55
India Glycols	980.4	2.13	959.95
IRB Infra	21.63	1.98	21.21
LIC India	431.25	1.83	423.51
GP Eco Solution	434.35	1.44	428.19
SBI Gold ETF	120.42	1.21	118.98
Zerodha Gold	22.14	0.96	21.93
Borana Weaves	308.65	0.96	305.7
UTI Gold ETF	118.4	0.95	117.29
Nipp Gold Bees	116.43	0.93	115.36
HDFC SIL ETF	208.3	0.88	206.49

* Stocks crossing above its Simple Moving Average (200DMA)

Breakdown - Cross below 200 DMA			
Company Name	LCP	Change %	200 DMA
CCCL	16.89	-7.60	18.28
Shree Karni Fab	445.4	-5.88	473.25
Krebs Biochem	60.28	-5.61	63.86
IIFL Finance	489.3	-3.78	508.51
NR Agarwal	433.25	-3.62	449.54
Medplus Health	801.55	-3.33	829.17
Imagicaaworld	46.64	-3.32	48.24
M&M Financial	315.4	-3.07	325.4
Shiva Mills Lim	59.61	-3.01	61.46
Cyber Media	16	-2.91	16.48
HBL Eng	792.8	-2.90	816.46
Can Fin Homes	837.3	-2.71	860.61
Kotak Mahindra	395.5	-2.62	406.16
Den Networks	29.34	-2.62	30.13
Holmarc Opto Me	99.75	-2.41	102.21
Mukka Proteins	23.55	-2.24	24.09
Bank of Baroda	272.8	-2.09	278.61
MOLOWVOL	36.87	-1.97	37.61

* Stocks crossing below its Simple Moving Average (200DMA)

Sectoral Indices - Gainers Losers for the day



Nifty 50 Stocks - Summary Details											
Symbol	LTP	Chng	% Chng	Volume (lacs)	Turnover (crs.)	52w High	Diff with 52w H	52w Low	Diff with 52w L	365 days % chng	30 days % chng
NIFTY 50	23946.25	-109.75	-0.46%	5884.85	47360	26373	9.20%	22183	7.95%	1.69%	-6.60%
ADANIENT	2970.00	-68.00	-2.24%	16.93	503	3105	4.35%	1753	69.42%	1.11%	15.60%
ADANIPTS	1782.30	-13.70	-0.76%	16.93	302	1858	4.06%	1291	38.11%	-1.24%	23.75%
APOLLOHOSP	8664.50	72.50	0.84%	3.64	315	8734	0.80%	6697	29.39%	5.97%	18.55%
ASIANPAINT	2655.00	9.80	0.37%	47.53	1262	2986	11.08%	2115	25.53%	-0.62%	12.56%
AXISBANK	1368.00	-9.20	-0.67%	126.02	1730	1418	3.55%	1043	31.22%	6.33%	11.66%
BAJAJ-AUTO	9664.00	-179.00	-1.82%	5.16	499	10834	10.80%	7859	22.98%	-7.61%	14.56%
BAJAJFINSV	1767.00	2.40	0.14%	15.65	276	2195	19.50%	1597	10.64%	-0.93%	-13.55%
BAJFINANCE	987.95	7.55	0.77%	198.76	1955	1103	10.39%	788	25.39%	8.78%	4.32%
BEL	413.50	6.30	1.55%	266.70	1092	473	12.66%	361	14.48%	0.67%	-0.24%
BHARTIARTL	1846.00	-4.70	-0.25%	109.40	2014	2175	15.11%	1741	6.06%	0.93%	-8.93%
CIPLA	1450.00	9.90	0.69%	41.63	611	1673	13.33%	1166	24.39%	3.50%	-3.49%
COALINDIA	442.90	7.50	1.72%	214.00	949	491	9.84%	369	20.14%	-3.28%	12.37%
DRREDDY	1381.00	30.50	2.26%	88.57	1233	1415	2.40%	1148	20.25%	5.95%	6.15%
EICHERMOT	7510.00	-88.00	-1.16%	23.26	1730	8230	8.75%	5353	40.30%	4.64%	32.69%
ETERNAL	259.15	4.00	1.57%	345.69	896	368	29.66%	213	21.90%	3.42%	-1.03%
GRASIM	3110.00	-16.60	-0.53%	12.86	398	3200	2.81%	2503	24.28%	-0.40%	8.70%
HCLTECH	1103.60	2.90	0.26%	51.87	569	1780	38.00%	1086	1.62%	-6.77%	-35.96%
HDFCBANK	797.05	0.75	0.09%	466.96	3732	1021	21.90%	727	9.69%	7.05%	-20.88%
HDFCLIFE	583.70	-1.75	-0.30%	48.08	280	821	28.88%	543	7.50%	-1.87%	-27.67%
HINDALCO	963.00	9.80	1.03%	94.99	917	1176	18.11%	658	46.46%	-14.53%	38.09%
HINDUNILVR	2145.20	-29.00	-1.33%	14.23	308	2750	21.99%	2023	6.07%	-0.39%	-7.01%
ICICIBANK	1388.00	0.50	0.04%	132.49	1841	1500	7.47%	1188	16.87%	10.47%	-5.07%
INDIGO	5337.30	-112.70	-2.07%	28.60	1526	6233	14.36%	3895	37.02%	21.16%	-8.23%
INFY	1034.00	-7.20	-0.69%	150.81	1561	1728	40.16%	1026	0.78%	-10.93%	-35.70%
ITC	291.00	1.00	0.34%	101.10	294	427	31.85%	275	5.80%	1.43%	-30.49%
JIOFIN	236.50	-2.93	-1.22%	92.29	219	339	30.15%	223	5.91%	-1.03%	-26.88%
JSWSTEEL	1231.40	0.40	0.03%	20.91	259	1328	7.27%	1008	22.16%	-3.65%	19.68%
KOTAKBANK	397.00	-12.00	-2.93%	372.10	1482	453	12.40%	346	14.91%	3.33%	-10.10%
LT	4167.90	-48.50	-1.15%	27.07	1137	4440	6.13%	3288	26.76%	2.24%	13.28%
M&M	3105.00	-77.20	-2.43%	37.01	1153	3840	19.14%	2896	7.22%	1.95%	-3.07%
MARUTI	13472.00	-273.00	-1.99%	13.59	1829	17370	22.44%	12201	10.42%	2.63%	6.57%
MAXHEALTH	1150.00	26.65	2.37%	41.06	471	1314	12.50%	903	27.35%	19.16%	-10.11%
NESTLEIND	1390.40	-12.20	-0.87%	34.13	478	1498	7.19%	1085	28.18%	-2.19%	13.10%
NTPC	355.00	2.95	0.84%	498.95	1776	414	14.33%	316	12.50%	-8.25%	4.94%
ONGC	234.10	1.00	0.43%	382.20	895	308	23.87%	229	2.40%	-11.79%	-3.60%
POWERGRID	287.00	3.10	1.09%	169.57	486	325	11.68%	250	14.80%	-1.22%	-4.09%
RELIANCE	1302.30	-15.80	-1.20%	137.58	1793	1612	19.20%	1253	3.92%	-1.43%	-14.06%
SBILIFE	1763.90	19.00	1.09%	39.11	685	2132	17.27%	1700	3.73%	-3.62%	-4.68%
SBIN	1038.95	-6.45	-0.62%	168.18	1745	1235	15.85%	787	32.09%	7.73%	29.00%
SHRIRAMFIN	1034.70	2.90	0.28%	113.69	1185	1108	6.62%	567	82.65%	9.24%	47.82%
SUNPHARMA	1873.00	10.20	0.55%	16.56	312	1917	2.27%	1548	20.99%	4.10%	10.99%
TATACONSUM	1114.00	-17.30	-1.53%	16.32	183	1283	13.15%	1007	10.60%	-5.47%	-0.92%
TATASTEEL	189.90	1.19	0.63%	625.48	1187	224	15.37%	153	24.52%	-8.71%	17.62%
TCS	2094.00	-0.70	-0.03%	34.12	713	3490	40.00%	2055	1.90%	-7.30%	-39.15%
TECHM	1438.90	1.80	0.13%	24.67	355	1854	22.39%	1304	10.34%	-3.03%	-14.06%
TITAN	4300.00	8.70	0.20%	5.69	244	4605	6.62%	3303	30.18%	5.52%	17.29%
TMPV	345.80	-7.40	-2.10%	118.80	413	740	53.25%	294	17.50%	-12.21%	-49.66%
TRENT	3265.50	49.30	1.53%	26.77	877	4174	21.77%	2184	49.54%	15.96%	-18.63%
ULTRACEMCO	11344.00	-145.00	-1.26%	2.31	263	13110	13.47%	10325	9.87%	-1.20%	-7.12%
WIPRO	175.60	0.60	0.34%	244.83	430	273	35.70%	171	2.40%	-14.03%	-33.75%

Disclaimer / Disclosures

ANALYST CERTIFICATION

I, Mrs. Vaishali Parekh B.com, Research Analyst, author and the name subscribed to this report, hereby certify that all of the views expressed in this research report accurately reflect our views about the subject issuer(s) or securities. We also certify that no part of our compensation was, is, or will be directly or indirectly related to the specific recommendation(s) or view(s) in this report.

Terms & conditions and other disclosures:

Prabhudas Lilladher Pvt. Ltd, Mumbai, India (hereinafter referred to as "PL") is engaged in the business of Stock Broking, Portfolio Manager, Depository Participant and distribution for third party financial products. PL is a subsidiary of Prabhudas Lilladher Advisory Services Pvt Ltd. which has its various subsidiaries engaged in business of commodity broking, investment banking, financial services (margin funding) and distribution of third party financial/other products, details in respect of which are available at www.plindia.com

This document has been prepared by the Research Division of PL and is meant for use by the recipient only as information and is not for circulation. This document is not to be reported or copied or made available to others without prior permission of PL. It should not be considered or taken as an offer to sell or a solicitation to buy or sell any security.

The information contained in this report has been obtained from sources that are considered to be reliable. However, PL has not independently verified the accuracy or completeness of the same. Neither PL nor any of its affiliates, its directors or its employees accepts any responsibility of whatsoever nature for the information, statements and opinion given, made available or expressed herein or for any omission therein.

Recipients of this report should be aware that past performance is not necessarily a guide to future performance and value of investments can go down as well. The suitability or otherwise of any investments will depend upon the recipient's particular circumstances and, in case of doubt, advice should be sought from an independent expert/advisor.

Either PL or its affiliates or its directors or its employees or its representatives or its clients or their relatives may have position(s), make market, act as principal or engage in transactions of securities of companies referred to in this report and they may have used the research material prior to publication.

PL may from time to time solicit or perform investment banking or other services for any company mentioned in this document.

PL is registered as Research Analyst under Securities and Exchange Board of India (Research Analysts) Regulations, 2014 PL submits that no material disciplinary action has been taken on us by any Regulatory Authority impacting Equity Research Analysis activities.

PL or its research analysts or its associates or his relatives do not have any financial interest in the subject company.

PL or its research analysts or its associates or his relatives do not have actual/beneficial ownership of one per cent or more securities of the subject company at the end of the month immediately preceding the date of publication of the research report.

PL or its research analysts or its associates or his relatives do not have any material conflict of interest at the time of publication of the research report.

PL or its associates might have received compensation from the subject company in the past twelve months.

PL or its associates might have managed or co-managed public offering of securities for the subject company in the past twelve months or mandated by the subject company for any other assignment in the past twelve months.

PL or its associates might have received any compensation for investment banking or merchant banking or brokerage services from the subject company in the past twelve months.

PL or its associates might have received any compensation for products or services other than investment banking or merchant banking or brokerage services from the subject company in the past twelve months PL or its associates might have received any compensation or other benefits from the subject company or third party in connection with the research report.

PL encourages independence in research report preparation and strives to minimize conflict in preparation of research report. PL or its analysts did not receive any compensation or other benefits from the subject Company or third party in connection with the preparation of the research report. PL or its Research Analysts do not have any material conflict of interest at the time of publication of this report.

It is confirmed that Mrs. Vaishali Parekh B.com, Research Analyst of this report has not received any compensation from the companies mentioned in the report in the preceding twelve months compensation of our Research Analysts is not based on any specific merchant banking, investment banking or brokerage service transactions.

The Research analysts for this report certifies that all of the views expressed in this report accurately reflect his or her personal views about the subject company or companies and its or their securities, and no part of his or her compensation was, is or will be, directly or indirectly related to specific recommendations or views expressed in this report.

The research analysts for this report has not served as an officer, director or employee of the subject company PL or its research analysts have not engaged in market making activity for the subject company

Our sales people, traders, and other professionals or affiliates may provide oral or written market commentary or trading strategies to our clients that reflect opinions that are contrary to the opinions expressed herein, and our proprietary trading and investing businesses may make investment decisions that are inconsistent with the recommendations expressed herein. In reviewing these materials, you should be aware that any or all of the foregoing, among other things, may give rise to real or potential conflicts of interest.

PL and its associates, their directors and employees may (a) from time to time, have a long or short position in, and buy or sell the securities of the subject company or (b) be engaged in any other transaction involving such securities and earn brokerage or other compensation or act as a market maker in the financial instruments of the subject company or act as an advisor or lender/borrower to the subject company or may have any other potential conflict of interests with respect to any recommendation and other related information and opinions.

Regd. Office: 3rd Floor, Sadhana House, 570, P. B. Marg, Behind Mahindra Tower, Worli, Mumbai - 400 018, India.