

* Sensex 76478.67 -249.70

* Nifty 23865.75 -80.50

* Bank Nifty 57542.90 -184.45

Market Preview

Nifty slips further; near crucial 23800 support zone

Nifty continue to witness a gradual slide since the last 3 sessions and has arrived near the important support zone at 23800 level which is near the 50EMA which needs to be sustained. BankNifty slipped further with profit booking seen and would have the important 200 period MA at 57100 zone as the near-term support level which needs to be sustained. The market breadth was slightly on the positive side with the advance decline indicating a ratio of 6:5 at close.

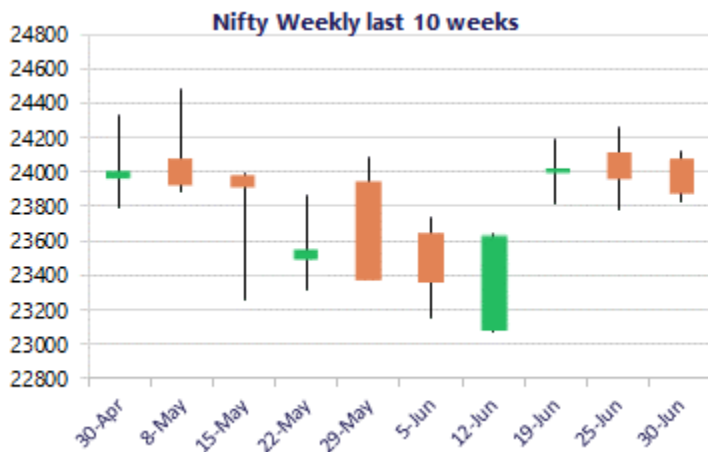
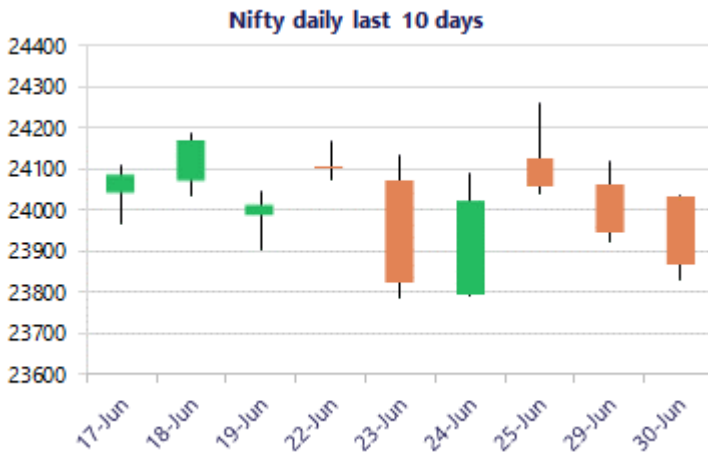
Market Forecast

Nifty daily range 23700 - 24000

Nifty witnessed a slightly volatile session swinging between the 24000 and 23850 zone on the final day of the month with bias maintained with a cautious approach having the important 23800 zone as the crucial near-term support level which needs to be sustained to maintain the overall trend intact. As mentioned earlier, the index would have the crucial tough resistance hurdle near the 24350 zone, which needs to be breached decisively to establish conviction and clarity for further upside positive move.

BankNifty continue to slip down with profit booking seen after finding resistance near the 58700 level and with a flag pattern maintained on the daily chart, it would need a decisive breach above the 58500 zone to confirm for a breakout and expect for fresh upward move in the coming days. On the downside, the index would continue to have the near-term support maintained near the important 200 period MA at 57100 zone which needs to be sustained to maintain the overall bias intact.

The support for the day is seen at 23700 levels, while the resistance is seen at 24000 levels. BankNifty would have the daily range of 57000-58200 levels.

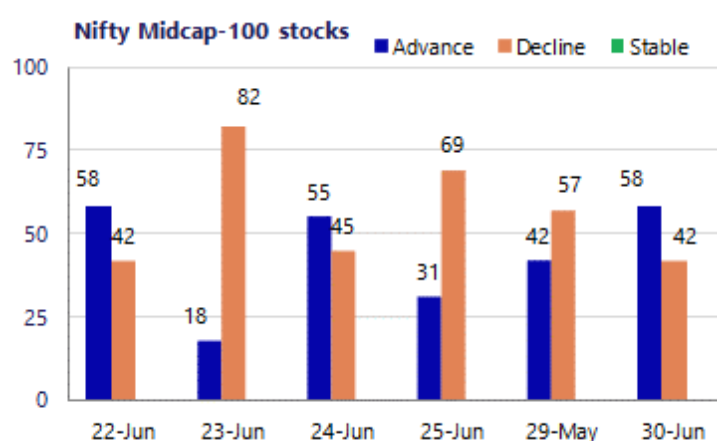
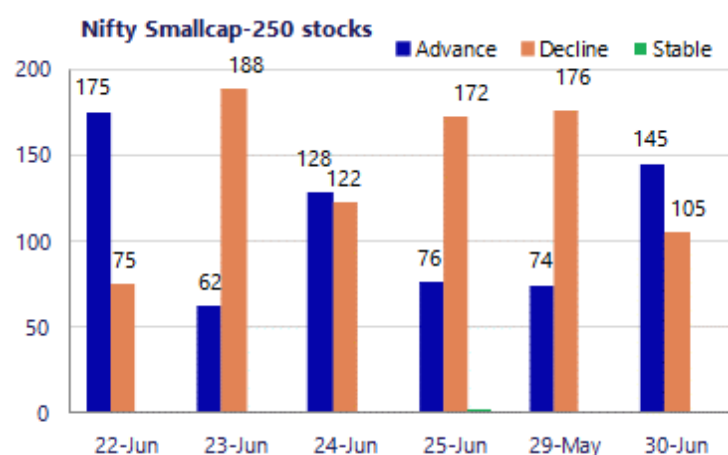


*Blue candle → Close rate > Open rate * Red candle → Close rate < Open rate

Sensex	Period	Closing	% Chng	Trend	Reversal	2 Sup	1 Sup	Pivot	1 Res	2 Res
	Daily	23865.75	-0.34%	-5	24021.65	23704	23785	23910	23991	24117
Nifty	Weekly	24056.00	0.18%	3	23597.45	23558	23807	24034	24283	24511
	Monthly	23865.75	1.35%	-6	24660.55	22541	23203	23733	24395	24924
	Daily	57542.90	-0.32%	-5	58300.60	57115	57329	57671	57884	58226
Bank Nifty	Weekly	58177.05	0.85%	3	55666.90	56355	57266	57986	58897	59617
	Monthly	57542.90	6.09%	-4	59050.45	50746	54145	56425	59824	62104
	Daily	76478.67	-0.33%	-5	76967.00	75907	76193	76615	76901	77323
Sensex	Weekly	77100.47	0.39%	3	74867.00	75275	76188	76995	77908	78716
	Monthly	76478.67	2.28%	-6	78980.70	71383	73931	75867	78415	80351

Gainers - Losers (Nifty 500 Stocks)

Gainers				Losers			
Company Name	Last Price	% Gain	Volume	Company Name	Last Price	% Loss	Volume
Cochin Shipyard	1507.9	5.62%	1434	Eicher Motors	7,073.50	-4.75%	7392
Balrampur Chini	554.95	5.28%	527.5	Birlasoft	286.3	-4.28%	299.35
Ather Energy	1140.55	5.24%	1092.95	Central Bank	32.53	-3.24%	32.92
Capri Global	227.66	5.10%	217.11	Firstsource Sol	228.45	-2.93%	235.6
Coromandel Int	2,005.00	4.76%	1919.9	Gabriel India	1,239.30	-2.82%	1276
APTUS VALUE	278.85	4.38%	269.1	HCL Tech	1071.8	-2.78%	1102.5
CreditAccess Gr	1,489.50	4.04%	1438.8	GE Shipping	1483.1	-2.63%	1524.8



Nifty Daily chart with RSI indicator



BankNifty Daily chart with RSI indicator

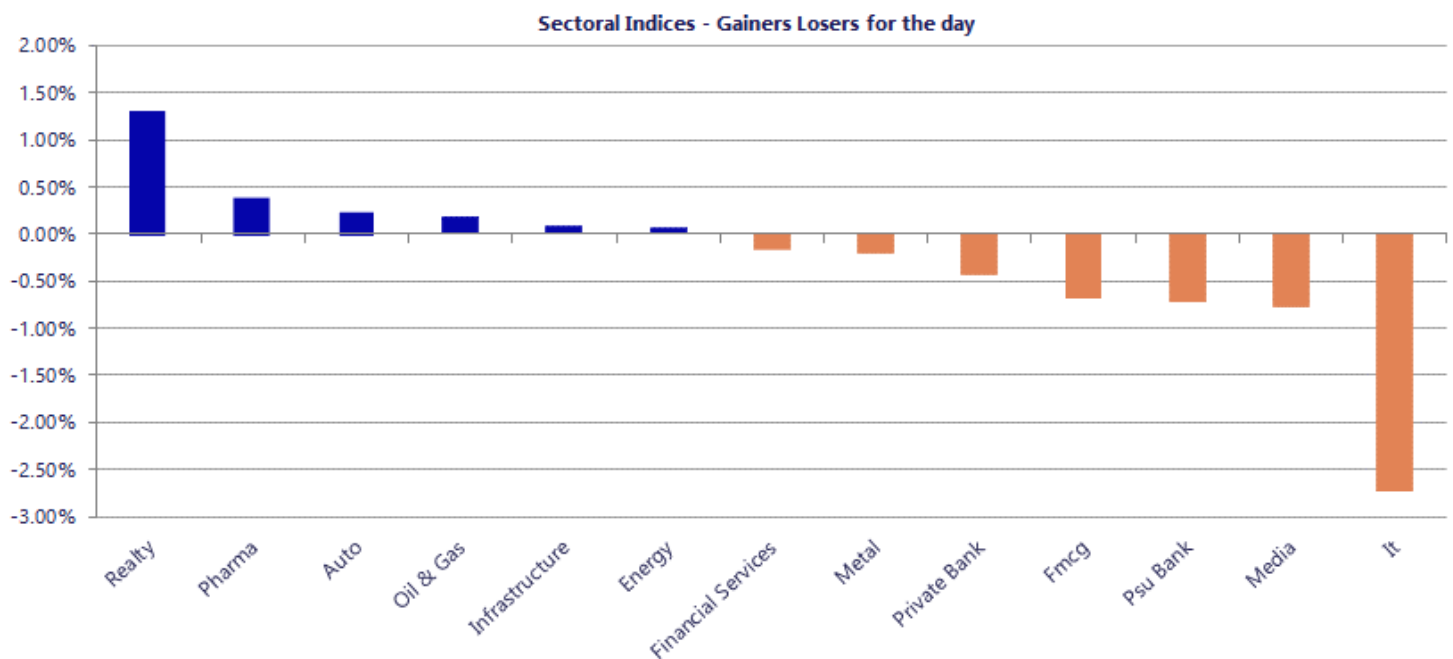


Breakouts - Cross above 200 DMA			
Company Name	LCP	Change %	200 DMA
Everest Ind	512.85	7.52	477
Transformers	351.35	4.73	335.49
Eimco Elecon	1753.2	4.42	1678.93
Emmbi Ind	97.55	4.31	93.52
Milton Industri	39.9	4.07	38.34
Chandan Healthc	278.65	2.97	270.6
Sejal Glass	758.5	2.83	737.61
Fairchem Org.	670.25	2.78	652.1
Godavari Bioref	287.9	2.69	280.37
Mahanagar Gas	1174.1	2.11	1149.82
Indoco Remedies	239.22	1.93	234.7
Revathi Equipme	759.35	1.76	746.22
Shiva Mills Lim	62.44	1.69	61.4
Five-Star Busin	505.1	1.55	497.38
Pansari Develop	289.85	1.47	285.66
Datamatics Glob	808.1	1.45	796.53
Tamil Newsprint	147.1	1.32	145.18
Maithan Alloys	1032.5	1.20	1020.29

Breakdown - Cross below 200 DMA			
Company Name	LCP	Change %	200 DMA
Dilip Buildcon	448.5	-2.77	461.27
Indian Metals	1266	-2.75	1301.8
Sandur Manganes	202.85	-2.30	207.62
Sundaram-Clayto	1357.4	-1.72	1381.11
Gem Aromatics	183.53	-1.70	186.7
Borana Weaves	301	-1.69	306.17
JITF Infralogis	309.75	-1.54	314.58
Valiant Organic	274.1	-1.50	278.27
Eicher Motors	7073.5	-1.31	7167.17
Gravita India	1630.2	-1.07	1647.77
Libas Consumer	11.28	-0.88	11.38
Reliance Chemo	133.42	-0.86	134.58
Sreeleathers	208.71	-0.58	209.93
Tata Steel	188.06	-0.58	189.15
Samhi Hotels	174.76	-0.48	175.6
Ipru Nifty Alp	27.13	-0.33	27.22
Lancor Holdings	24.61	-0.28	24.68
EQUAL50	326.41	-0.14	326.86

* Stocks crossing above its Simple Moving Average (200DMA)

* Stocks crossing below its Simple Moving Average (200DMA)



Nifty 50 Stocks - Summary Details											
Symbol	LTP	Chng	% Chng	Volume (lacs)	Turnover (crs.)	52w High	Diff with 52w H	52w Low	Diff with 52w L	365 days % chng	30 days % chng
NIFTY 50	23865.75	-80.50	-0.34%	4489.92	39504	26373	9.51%	22183	7.59%	1.35%	-6.47%
ADANIENT	3040.00	77.50	2.62%	20.99	633	3105	2.09%	1753	73.42%	3.49%	19.54%
ADANIPTS	1810.10	34.00	1.91%	22.30	401	1858	2.57%	1291	40.26%	0.30%	24.82%
APOLLOHOSP	8668.50	13.50	0.16%	4.91	427	8770	1.16%	6697	29.45%	6.02%	19.70%
ASIANPAINT	2640.00	-16.90	-0.64%	18.21	483	2986	11.58%	2115	24.82%	-1.18%	12.77%
AXISBANK	1351.50	-5.30	-0.39%	77.81	1054	1418	4.71%	1043	29.64%	5.04%	12.70%
BAJAJ-AUTO	9692.00	62.00	0.64%	4.31	416	10834	10.54%	7859	23.33%	-7.34%	15.71%
BAJAJFINSV	1770.00	12.20	0.69%	12.33	219	2195	19.36%	1597	10.83%	-0.76%	-13.91%
BAJFINANCE	1007.00	30.95	3.17%	124.45	1244	1103	8.66%	788	27.81%	10.87%	7.53%
BEL	412.60	1.00	0.24%	146.11	602	473	12.85%	361	14.23%	0.45%	-2.11%
BHARTIARTL	1855.00	13.90	0.75%	72.34	1345	2175	14.69%	1741	6.58%	1.42%	-7.69%
CIPLA	1468.00	13.90	0.96%	28.18	413	1673	12.25%	1166	25.93%	4.78%	-2.52%
COALINDIA	439.95	-4.90	-1.10%	43.63	192	491	10.44%	369	19.34%	-3.92%	12.25%
DRREDDY	1361.00	-14.70	-1.07%	24.46	333	1415	3.81%	1148	18.51%	4.41%	6.05%
EICHERMOT	7101.00	-325.00	-4.38%	24.75	1756	8230	13.72%	5353	32.65%	-1.06%	25.54%
ETERNAL	265.20	5.80	2.24%	329.41	865	368	28.02%	213	24.74%	5.83%	0.40%
GRASIM	3104.00	23.80	0.77%	8.69	270	3200	3.00%	2503	24.04%	-0.59%	9.12%
HCLTECH	1072.00	-30.40	-2.76%	37.93	409	1780	39.78%	1069	0.32%	-9.44%	-37.98%
HDFCBANK	800.45	1.55	0.19%	457.78	3656	1021	21.56%	727	10.16%	7.51%	-20.01%
HDFCLIFE	574.85	-8.40	-1.44%	37.15	214	821	29.96%	543	5.87%	-3.35%	-29.41%
HINDALCO	959.00	-4.80	-0.50%	85.15	815	1176	18.45%	658	45.86%	-14.88%	38.41%
HINDUNILVR	2123.30	-28.00	-1.30%	23.64	502	2750	22.79%	2023	4.98%	-1.40%	-7.47%
ICICIBANK	1379.90	-7.70	-0.55%	183.98	2535	1500	8.01%	1188	16.19%	9.83%	-4.56%
INDIGO	5341.50	26.30	0.49%	10.65	571	6233	14.30%	3895	37.13%	21.26%	-10.62%
INFY	1006.00	-30.70	-2.96%	241.28	2430	1728	41.78%	996	1.00%	-13.34%	-37.20%
ITC	287.30	-3.40	-1.17%	181.80	523	427	32.72%	275	4.45%	0.14%	-31.01%
JIOFIN	236.81	0.10	0.04%	99.50	236	339	30.06%	223	6.05%	-0.90%	-27.53%
JSWSTEEL	1229.30	-3.10	-0.25%	12.43	153	1328	7.43%	1008	21.95%	-3.81%	20.46%
KOTAKBANK	396.00	0.50	0.13%	248.21	975	453	12.62%	346	14.62%	3.07%	-8.48%
LT	4143.80	-21.40	-0.51%	15.39	640	4440	6.67%	3288	26.02%	1.65%	12.92%
M&M	3076.20	-16.80	-0.54%	38.81	1198	3840	19.89%	2896	6.22%	1.00%	-3.36%
MARUTI	14152.00	740.00	5.52%	15.11	2114	17370	18.53%	12201	15.99%	7.81%	14.13%
MAXHEALTH	1129.00	-20.90	-1.82%	24.57	280	1314	14.10%	903	25.03%	16.98%	-11.52%
NESTLEIND	1413.80	26.50	1.91%	31.78	447	1498	5.63%	1085	30.34%	-0.54%	14.70%
NTPC	357.75	1.65	0.46%	102.91	366	414	13.67%	316	13.37%	-7.53%	6.82%
ONGC	235.25	1.20	0.51%	241.34	563	308	23.50%	228	3.34%	-11.36%	-3.67%
POWERGRID	286.40	0.15	0.05%	119.85	343	325	11.86%	250	14.56%	-1.43%	-4.50%
RELIANCE	1294.50	-6.50	-0.50%	156.95	2033	1612	19.69%	1253	3.30%	-2.02%	-13.73%
SBILIFE	1777.00	21.60	1.23%	14.57	257	2132	16.65%	1700	4.50%	-2.90%	-3.33%
SBIN	1029.90	-6.20	-0.60%	111.61	1154	1235	16.59%	787	30.94%	6.79%	25.54%
SHRIRAMFIN	1046.00	13.35	1.29%	52.19	544	1108	5.60%	567	84.64%	10.44%	47.98%
SUNPHARMA	1867.80	-7.00	-0.37%	23.53	440	1917	2.55%	1548	20.66%	3.81%	11.46%
TATACONSUM	1073.00	-39.80	-3.58%	54.31	586	1283	16.35%	1007	6.53%	-8.94%	-2.36%
TATASTEEL	188.73	-0.84	-0.44%	336.83	634	224	15.90%	153	23.75%	-9.27%	18.13%
TCS	2033.00	-64.90	-3.09%	68.48	1398	3490	41.75%	2019	0.70%	-10.00%	-41.28%
TECHM	1405.50	-28.30	-1.97%	24.20	341	1854	24.19%	1304	7.78%	-5.28%	-16.69%
TITAN	4423.10	145.90	3.41%	12.43	545	4605	3.95%	3303	33.91%	8.54%	19.86%
TMPV	351.50	6.45	1.87%	176.09	619	740	52.48%	294	19.44%	-10.76%	-48.91%
TRENT	3273.00	14.70	0.45%	15.13	496	4174	21.59%	2184	49.89%	16.23%	-21.04%
ULTRACEMCO	11281.00	-55.00	-0.49%	3.32	374	13110	13.95%	10325	9.26%	-1.75%	-6.71%
WIPRO	170.35	-5.13	-2.92%	268.15	460	273	37.62%	170	0.18%	-16.60%	-35.95%

Disclaimer / Disclosures

ANALYST CERTIFICATION

I, Mrs. Vaishali Parekh B.com, Research Analyst, author and the name subscribed to this report, hereby certify that all of the views expressed in this research report accurately reflect our views about the subject issuer(s) or securities. We also certify that no part of our compensation was, is, or will be directly or indirectly related to the specific recommendation(s) or view(s) in this report.

Terms & conditions and other disclosures:

Prabhudas Lilladher Pvt. Ltd, Mumbai, India (hereinafter referred to as "PL") is engaged in the business of Stock Broking, Portfolio Manager, Depository Participant and distribution for third party financial products. PL is a subsidiary of Prabhudas Lilladher Advisory Services Pvt Ltd. which has its various subsidiaries engaged in business of commodity broking, investment banking, financial services (margin funding) and distribution of third party financial/other products, details in respect of which are available at www.plindia.com

This document has been prepared by the Research Division of PL and is meant for use by the recipient only as information and is not for circulation. This document is not to be reported or copied or made available to others without prior permission of PL. It should not be considered or taken as an offer to sell or a solicitation to buy or sell any security.

The information contained in this report has been obtained from sources that are considered to be reliable. However, PL has not independently verified the accuracy or completeness of the same. Neither PL nor any of its affiliates, its directors or its employees accepts any responsibility of whatsoever nature for the information, statements and opinion given, made available or expressed herein or for any omission therein.

Recipients of this report should be aware that past performance is not necessarily a guide to future performance and value of investments can go down as well. The suitability or otherwise of any investments will depend upon the recipient's particular circumstances and, in case of doubt, advice should be sought from an independent expert/advisor.

Either PL or its affiliates or its directors or its employees or its representatives or its clients or their relatives may have position(s), make market, act as principal or engage in transactions of securities of companies referred to in this report and they may have used the research material prior to publication.

PL may from time to time solicit or perform investment banking or other services for any company mentioned in this document.

PL is registered as Research Analyst under Securities and Exchange Board of India (Research Analysts) Regulations, 2014 PL submits that no material disciplinary action has been taken on us by any Regulatory Authority impacting Equity Research Analysis activities.

PL or its research analysts or its associates or his relatives do not have any financial interest in the subject company.

PL or its research analysts or its associates or his relatives do not have actual/beneficial ownership of one per cent or more securities of the subject company at the end of the month immediately preceding the date of publication of the research report.

PL or its research analysts or its associates or his relatives do not have any material conflict of interest at the time of publication of the research report.

PL or its associates might have received compensation from the subject company in the past twelve months.

PL or its associates might have managed or co-managed public offering of securities for the subject company in the past twelve months or mandated by the subject company for any other assignment in the past twelve months.

PL or its associates might have received any compensation for investment banking or merchant banking or brokerage services from the subject company in the past twelve months.

PL or its associates might have received any compensation for products or services other than investment banking or merchant banking or brokerage services from the subject company in the past twelve months PL or its associates might have received any compensation or other benefits from the subject company or third party in connection with the research report.

PL encourages independence in research report preparation and strives to minimize conflict in preparation of research report. PL or its analysts did not receive any compensation or other benefits from the subject Company or third party in connection with the preparation of the research report. PL or its Research Analysts do not have any material conflict of interest at the time of publication of this report.

It is confirmed that Mrs. Vaishali Parekh B.com, Research Analyst of this report has not received any compensation from the companies mentioned in the report in the preceding twelve months compensation of our Research Analysts is not based on any specific merchant banking, investment banking or brokerage service transactions.

The Research analysts for this report certifies that all of the views expressed in this report accurately reflect his or her personal views about the subject company or companies and its or their securities, and no part of his or her compensation was, is or will be, directly or indirectly related to specific recommendations or views expressed in this report.

The research analysts for this report has not served as an officer, director or employee of the subject company PL or its research analysts have not engaged in market making activity for the subject company

Our sales people, traders, and other professionals or affiliates may provide oral or written market commentary or trading strategies to our clients that reflect opinions that are contrary to the opinions expressed herein, and our proprietary trading and investing businesses may make investment decisions that are inconsistent with the recommendations expressed herein. In reviewing these materials, you should be aware that any or all of the foregoing, among other things, may give rise to real or potential conflicts of interest.

PL and its associates, their directors and employees may (a) from time to time, have a long or short position in, and buy or sell the securities of the subject company or (b) be engaged in any other transaction involving such securities and earn brokerage or other compensation or act as a market maker in the financial instruments of the subject company or act as an advisor or lender/borrower to the subject company or may have any other potential conflict of interests with respect to any recommendation and other related information and opinions.

Regd. Office: 3rd Floor, Sadhana House, 570, P. B. Marg, Behind Mahindra Tower, Worli, Mumbai - 400 018, India.